

APRIL  
2021



There's a phrase I love in the Eucharistic Prayer:

***'keep us firm in the hope you have set before us, so we and all your people shall be free.'***

We all need a little, or maybe more than a little, bit of hope at present. It has been a truly awful year. We haven't all experienced it in the same way. It is as though we have all been on the same sea, but in different boats. Our commonality is rather that each one of us has been all at sea, disorientated, and left with a sense of longing, or hope, that we will reach shore and that life can return to normal; whatever that means.

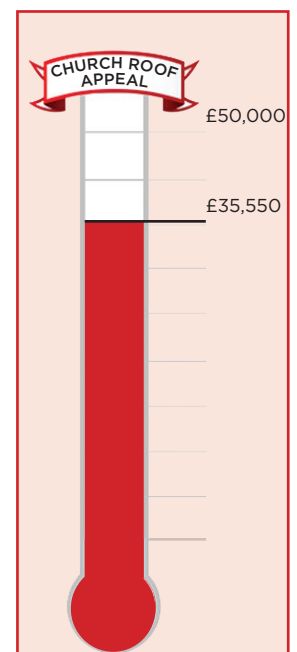
Easter is the church's great season of hope. At Easter we reflect on and take confidence from the fact that God's story is bigger than ours; that through the cross and the resurrection we have hope; hope that things can be and will be better, both in the here and now and for all time. It is through the events of the resurrection that we obtain our most valuable freedoms.

The church will be open for Holy Week, public worship will be resuming.

As we gather, we will do so ***'firm in the hope'*** that better times are ahead and that through the life-giving sacrifice of Jesus Christ our freedom has already been won. Please do come and join us.

In Christ, Andrew

Rev'd Andrew Lightbown,  
Rector, Winslow Benefice



Advertising and copy deadline for next issue : 15<sup>th</sup> April 2021.  
To advertise or submit articles email: [editor@ghfocus.com](mailto:editor@ghfocus.com)

### Light up the tower of St James

If you wish to sponsor the tower lights for that special occasion, please help us by using this form for your request.

I would like to sponsor the lights on the following date(s):

Date: \_\_\_\_\_

Commemorating \_\_\_\_\_

\_\_\_\_\_

Date: \_\_\_\_\_

Commemorating \_\_\_\_\_

\_\_\_\_\_

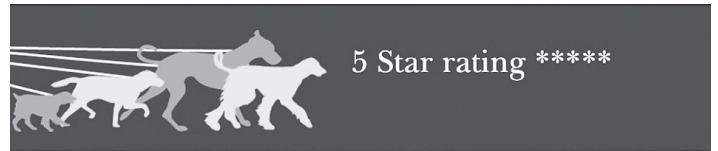
The cost is £5 per night.

Cheques payable to: Great Horwood PCC.

Please send to Ian Lamberton

3 The Green, Great Horwood MK17 0RH.

Tel: 01296 715968



## Greenway Dog Walking

DAYCARE AND BOARDING WITHIN THE FAMILY HOME  
GROUP OR INDIVIDUAL WALKS, POP-INS  
QUALIFIED CANINE 1ST AID AND EMERGENCY CARE  
CPD CANINE BODY LANGUAGE  
FULLY INSURED AND LICENSED LC-201905 37236  
BUCKS CC

FIND US ON FACEBOOK  
PLEASE CALL LOUISE FOR ANY ENQUIRIES  
07889658215  
BASED IN GREAT HORWOOD



# ExemplaCare

Exceptional carers & nurses at home

We offer the very best personalised care and support in the comfort of your own home.

We serve Buckingham, Winslow, Brackley & the surrounding villages.

Personal Care

Home Help

Nursing Care

Complex Care

01280 821860

contact@exemplacare.co.uk

www.exemplacare.co.uk

Serving our local community & employing local staff.

# Church Times

Rev Andrew Lightbown  
e-mail [alightbown@hotmail.co.uk](mailto:alightbown@hotmail.co.uk) phone 01296 712564  
[www.winslowbenefice.org.uk](http://www.winslowbenefice.org.uk)

We are happy to confirm we have been able to re-open the Church for Sunday Services again from Palm Sunday 28th March at 11am. All are welcome to join us on **Easter Sunday 4th April at 11am.**

We will be complying with government guidelines on social distancing, hand sanitizing, maintaining records of attendance and wearing face masks during the service.

All our services are at 11.00 on Sundays and all are welcome.

*David Brazier & June Margerrison, Churchwardens*

## GREAT HORWOOD VILLAGE HALL

We will be setting out a post Covid opening programme for the Village Hall in next month's Focus once all the Government guidelines are agreed.

Now is the time for everyone in the village, particularly all our newcomers, to start thinking about how they would like to use the Village Hall in the future.

Some activities that have taken place include Tea Parties, Coffee mornings, Arts and Craft groups, Whist drives, Puppy training classes, Quiz nights, Badminton, Play groups and of course we have a stage for anyone wishing to re-establish a Drama group or for demonstrations!

*Ian Lamberton*

01296 715968

## THANK YOU GREAT HORWOOD PARISH COUNCIL

The Parish Council have donated £500.00 to FOCUS towards colour printing costs. This enables the Parish to keep receiving local news and notices.

A massive **THANK YOU** to the PC from the Focus Team.

## GREAT HORWOOD SCOUT GROUP

### GOOD NEWS!

All Scout sections are now back to face to face meetings; socially distanced

For both indoors and outdoor meetings each week

Beaver Scouts meet Tuesdays 5:30 – 6:30pm

Cub Scouts meet Wednesdays 6:15 – 7:45pm

Scouts meet Friday 7:30 – 9:00pm

We have vacancies in all 3 sections

So why not come and join us

The Scouts Troop is looking to recruit new Leaders

If you would like to be part of a great Community group; then please volunteer

For more information please contact

*Yvonne Taylor MInstLM*

*Group Scout Leader*

07931 585926,

[adcbandc@uwclub.net](mailto:adcbandc@uwclub.net)

### FOR SALE

**CHICCO Happy Snack High Chair**

Excellent condition.

A small donation to Church Roof Fund please

Contact Margaret on Tel: 01296 713281

## GREAT HORWOOD FOOTBALL CLUB

The past 2 seasons have been heavily interrupted by Covid, but we still have 2 senior teams with both the 1st and Res team coming back to football from the 29th March. Both teams are preparing to complete a shortened season with chances of the 1st team winning the North Bucks Premier division. The Vets team are waiting on the MK Veterans league decision to continue but it is hoped the Vets team will also be able to play again after 29th March.

We are always looking to encourage new players to join, especially from within the village. The only criteria is to have a love for football and be over 17 for the senior teams and over 35 for the veterans. As a Village Club we would love to hear from anybody willing to help with the running of the club from ground maintenance to kit washer, running the line to managing a team.

Our Junior Section has 3 teams (U16s, U14s and U13s) who are always on the look-out for players who live in or around Great Horwood.

These teams play in the Milton Keynes & District Development League. The league has over 100 clubs and over 500 teams competing within it. Leagues start at under 7's although for under 7's, under 8's, under 9's, under 10's, and under 11's the games are classed as non-competitive. So whilst scores are recorded no league tables are produced until teams play at under 12's level. This is to allow children to develop without the added pressure of competition.

We would love to start new teams (boys and girls are both welcome) from U6s (Year 1) upwards.

The emphasis is for the kids to play football in a safe and friendly environment with a smile on their faces.

All of our coaches have been through a FA Level 1 coaching course and all of them give up their time to ensure that the children have a team to play in. Our coaches enjoy their football and enjoy their team. All new coaches are given the full support of the club.

If you are interested in joining the club please contact either:

*Darren Sirett*

*Club Secretary*

*Mob 07798 653170. Email [darren\\_sirett@hotmail.com](mailto:darren_sirett@hotmail.com)*

*Martin Waggott*

*Junior Secretary*

*Mob 07768 127214. Email [martinwaggott@hotmail.com](mailto:martinwaggott@hotmail.com)*

## CHURCH LIGHTING

The Church was lit on 19th March to remember Allan Sirett's death.

*Ian Lamberton*

Don't wait till you are ready; **START NOW**



Online and In Person, evening and weekend classes in Winslow

[www.jazzercisebbh.com](http://www.jazzercisebbh.com)

To book your spot, contact Keri  
07900 987230 or [jazzercise1@hotmail.co.uk](mailto:jazzercise1@hotmail.co.uk)



**Do more.  
Learn more.  
Be more.**

Put your skills to use, learn new ones, and contribute to an amazing life-experience for you and your local community.

Volunteering is easier than you think. With full support and training, you can volunteer on a flexible basis.

Put your skills to use, learn new ones, and contribute to an amazing life-experience for you and your local community.

Volunteering is easier than you think. With full support and training, you can volunteer on a flexible basis.

[scouts.org.uk/join](http://scouts.org.uk/join)

**#SkillsForLife**

Copyright 2018 The Scout Association Registered Charity numbers 306101/SC038437



**Scouts**

1st Great Horwood Scout Group

# Local Musical Theatre Classes

for ages **4 - 11**

*Be a star on stage and in life*

BOOK A TRIAL CLASS TODAY AT

**PWACADEMY.COM**

07568 447 131 | 01296 733 258 | [admin@pwacademy.com](mailto:admin@pwacademy.com)



**Peplow Williams Academy** of Theatre and Performing Arts

# EASTER RECIPES *from Sara Walsh*

English asparagus is soon in season. A mid week supper recipe to try with some local produce.

## Asparagus and prawn risotto

Serves 2

### Ingredients

200gms asparagus spears trimmed and cut into thirds  
 30gms butter  
 2 shallots finely chopped  
 1 garlic clove crushed  
 200gms Arborio rice  
 60ml white wine  
 500ml hot vegetable stock  
 20gms butter for prawns.  
 200gms raw prawns (grey uncooked ones)  
 Finely grated rind of a lemon.  
 2tbsp chopped chives  
 50ml double cream  
 Sea salt & pepper  
 50gms Parmesan cheese grated

### Method

- To start, boil and briefly blanch the asparagus. Drain the asparagus and refresh in cold water, set to one side.

- Melt the butter in a large pan, add shallots and garlic, gently soften for 5 minutes.
- Add the rice and allow to cook stirring for a minute or two, then pour in the wine and allow to bubble.
- Add a ladleful of hot stock and stir until absorbed, keep going until all the stock is incorporated.
- When the risotto is almost ready add the asparagus and the cream, give it a stir. Put the lid on, turn off the heat and let it rest.
- Heat the butter in a frying pan, when foaming put the prawns in the pan for a couple of minutes, cook until they turn nicely pink all over.
- Meanwhile add the zest, chopped chives, and seasoning to the risotto.
- Serve the risotto in wide bowls with prawns on top, sprinkled with the Parmesan.

sarajwalsh@hotmail.co.uk

A sweet treat for Easter Lunch

## White chocolate & raspberry cheesecake

Makes 8 slices

### Ingredients

FOR THE FILLING:

200 grams white cooking chocolate (roughly chopped)  
 300 grams full-fat cream cheese (at room temperature, drained of any liquid)  
 300 millilitres double cream  
 1 teaspoon fresh lemon juice  
 1 teaspoon vanilla extract

FOR THE BASE:

175 grams ginger nut or Lotus biscuits  
 50 grams soft unsalted butter

FOR THE TOP:

1 Small punnet raspberries  
 5 small sprigs of mint  
 2 tsp icing sugar.

### Method

You will need 1 x 20cm/8-inch springform cake tin.

- Put the pieces of white chocolate into a heatproof bowl that will sit on top of a saucepan. Fill the pan with a small amount of water, just enough to come up about 3–4cm / 1½ inches up the sides, and bring to the boil. Sit the bowl of chocolate on top, making sure the base of the bowl doesn't touch the water. Turn the heat down and let the white chocolate melt very gently, every now and then giving it a careful stir with a silicone spatula. Once there are only a few small lumps of unmelted chocolate left, give

it another stir then remove the bowl and sit it somewhere for about 10 minutes, until the chocolate remains liquid but is cooled to room temperature.

- For the base, break the biscuits into a food processor and blitz until you have almost all crumbs. Add the butter and process again until the mixture starts to clump and cleave to the blade. If doing this by hand, put the biscuits into a bag, crush to crumbs, then melt the butter and stir into the biscuit crumbs until well mixed.
- Press the biscuit mixture into the springform cake tin, letting some come a little way up the sides. The back of a dessert or serving spoon is the easiest tool for the already easy job here. Chill the tin in the fridge while you get on with the cheesecake filling.
- Beat the cream cheese in a bowl that will take all the ingredients later – a wooden spoon is fine here – until it is soft. Gently fold in the slightly cooled, melted white chocolate.
- Softly whip the cream so it is thickened but the peaks don't hold their shape, then fold it into the white chocolate mixture in two batches. Add the lemon juice and vanilla extract and fold these in, then pour and scrape the pale, almost-moussy mixture into the biscuit-lined tin. (You can at this point fold in a few raspberries if you wish, to add texture.) Smooth the top, cover the tin with cling film and refrigerate overnight before serving.
- When you're ready to eat it, make sure it's been out of the fridge for 10 minutes before unclipping from the tin. On the top arrange a handful of raspberries, the sprigs of fresh mint and finish with a dusting of icing sugar.

# Claydon Auctioneers

Auctioneers of:

Antiques, Collectables, Silver,  
Jewellery, Watches, Paintings & Prints,  
Furniture, Clocks, Militaria,  
Sporting Goods & Memorabilia,  
General Goods & Chattels, etc.

Free auction valuations available,  
Partial & total house clearance service,  
Insurance, probate & family  
division valuations

Auctioneer: Louise Gostelow

Contact:

01296 714434

info@claydonauctioneers.com

www.claydonauctioneers.com

Claydon Auctioneers Ltd.  
The Claydon Saleroom,  
Calvert Road, Middle Claydon,  
Buckinghamshire, MK18 2EZ



**MIND  
AND  
BODY**

## Zoom Clinical Pilates Classes

### Mixed Ability

Mon & Wed @ 9.30am

### Older Adult

Mon & Wed @ 11.15am

### Chair Based

Tues & Thurs @ 10.30am

### Also Available

Private 1:1, Small Group, Reformer, Combo  
Chair, Specialised Exercise for Older Adults  
& Neurological Conditions

**Ruth Reid** APPI

**07736 438443**

**info@rlr-therapy.com**

**www.rlr-therapy.com**

**FB or LinkedIn**

# What's my house worth in Great Horwood?

If you want to know, get in touch with Ella Homes and Alexander & Co for your free, no obligation valuation.

We're working in partnership to cover more of your local area.

Aylesbury: 01296 710200

Buckingham: 01280 817400

Bicester: 01869 324711

Winslow: 01296 715386

**ella**

in partnership with

[www.ella.co.uk](http://www.ella.co.uk)



ALEXANDER & CO

[www.alexanderandco.co.uk](http://www.alexanderandco.co.uk)

## GREAT HORWOOD CRICKET CLUB

The year 2020 started with great optimism for the club, with the 1st XI having secured promotion back to Division 1 of the Four Counties Cricket League, whilst the 2nd XI managed to maintain their position in Division 5 and we were all looking forward to another warm summer of cricket.

The only blot on the landscape at that point, was the infestation of rabbits around our ground that were causing massive damage to the outfield. After a lot of work and expense we were finally getting on top of this issue by early March, however our optimism and hopes for the future were tragically dashed. The sudden loss of Alan Sirett, our Chairman, Groundsman, Umpire, Scorer, Barman et al, rocked the club to its core. Only the day before, I spoke to Alan on the phone, where he was hoping that the cricket season would not be ruined by the COVID 19 outbreak that was in its early stages.

Alan was Mr Great Horwood Cricket Club, and he proudly carried the name of the club around the world, as he and Lynda followed the English team on their various tours. We can never replace Alan, nor will we ever forget his cheery face and demeanour around the club.

In the event, the pandemic put paid to any league cricket, with just a few friendly games being played late in the season as lockdowns permitted. As Summer turned to Autumn and then Winter, with Spring almost here we have now started making plans to get the cricket club going again. Gary Lee and Jack Trundell have both worked hard at keeping the field in good shape through 2020 and with lockdowns now allowing the start of recreational cricket, there is a lot to be done to enable it all to start again in earnest on 1st May.

A Sub-committee has developed an action plan of

### Why join Us?

- We are a village cricket club based between Milton Keynes (Bletchley) and Buckingham.
- We currently run 2 sides in the Four Counties Cricket League (FCCL).
- **We have some excellent facilities:**
  - o Excellent 10-strip cricket wicket and well maintained outfield in a picturesque setting;
  - o Large changing rooms with showers;
  - o Fully licensed bar;
  - o The field is large and enclosed which means plenty of space for the kids to run around safely;
  - o There is an artificial cricket wicket with net cages available for practice sessions.
- We have 2 teams, 1st XI playing in Division 1 of FCCL and 2nd XI in Division 5, which means opportunities for players of all abilities. We actively encourage and develop youth players through our 2ndXI.
- The FCCL requires only a limited amount of travelling to matches, with matches lasting 40 overs per side. Flexible approach to starting times, means that time away from home is minimised.
- We are a family friendly club with a very strong social aspect.
- We keep our signing-on and match fees as low as possible. We are possibly the lowest in the area, whilst still providing excellent facilities and cricket.

things needed and with support from members, we are confident that everything will be in place for the start of the season. There will be a home game every Saturday from the first Saturday in May through to the last Saturday in September.

The club has been successful in gaining a very generous sponsorship deal with local company Marine & Cargo. This financial support has helped the club's finances enormously and we are very grateful for this and will proudly wear their name on our club shirts.

Another great boon to the club has been the support of GHPC in both giving the club grants, rent rebates and general good guidance on keeping the club afloat with no income flow.

Having a complete season with no competitive cricket leaves us with a potential loss of players, as people either retire or find other things to do on a Saturday. To this end, we are advertising for new playing members to join us and to ensure we can put out 2 full sides each weekend. Anybody who wishes to join the club will be very welcome, irrespective of their capabilities as a cricketer. We are a true village club with a strong social focus, that provides good quality cricket opportunities.

Even if you do not have playing aspirations, you are also welcome to join the club as a Social Member, using the club's bar facilities whilst watching cricket on a warm summer's day.

As well as seeking new players, we are also needing a regular umpire for all the 1st XI league fixtures. We are offering a very competitive fee (plus a free tea) for anyone willing and able to take on this role.

If you are interested in playing for the club or to be our umpire please contact John Goodger in the first instance. Email address is johngoodger@hotmail.com

### We are looking for new players for the 2021 Season

#### All we ask of you is:

- A reasonable level of commitment (but we don't expect you to play every week!)
- Share a love of cricket
- To stay for a drink after a game if possible
- To enjoy yourself!

If you are interested in playing cricket with us, please contact the Club Secretary at:

Greathorwoodcricketclub@gmail.com

### We are looking for an Umpire for the 2021 Season

#### What is involved in being an Umpire:

- An excellent understanding of the rules of cricket and the additional rules operating within the FCCL (these can be learnt prior to the season).
- A reasonable level of commitment.
- Share a love of cricket

#### What we will give you in return for your services:

- A weekly fee that can be negotiated; this would incorporate any travelling expenses.
- Social membership of the club.
- Training in the rules of cricket (if needed).

If you are interested in taking on the position of Umpire for us, please contact the Club Secretary at Greathorwoodcricketclub@gmail.com

## W.I.NEWS

At our March meeting our guest speaker Jenny Gibbs dressed in colourful traditional costume and gave a fascinating talk on her experiences in Turkey where, like Shirley Valentine, she found love and stayed much longer than intended. After discovering how much she adored Turkey while on holiday in 1993, Jenny returned later, found work in a guest house, and was then invited by the resident chef to visit Narhisar, a small remote village where his family lived. Jenny fell in love with the village and the chef and they bought a very old farmhouse and spent years restoring it. They have been together for twenty seven years and spend half the year here and half in Turkey. Jenny has also written a book called Turkish Jenny and Telegraph Tales.

We are now looking forward to our normal meetings in the village hall resuming again. In the meantime we have Zoom speakers planned for the next few months. At our next meeting on Tuesday April 13th at 7pm we have the charity Medi-SOS giving us a talk. They are a charity working in Bucks giving away grab bags. They help the emergency services quickly and efficiently finding the information that they need when someone falls ill.

Our regular Monday morning walks of six will be able to restart next month too. We all enjoy catching up with each other's news and offering any support where needed. When we can share cars again, and have more of us together, we will be able to arrange walks in the surrounding countryside.

Our meetings are enjoyable and fun and new members would be very welcome. If you are interested in coming to a meeting, with no obligation, please contact Angela Mayne on 715400 or [angela.mayne@googlemail.com](mailto:angela.mayne@googlemail.com).

Sally Ahern

## MEN IN SHEDS

The vaccination programme continues apace and, with continued caution on our part, we can remain optimistic that the 'roadmap' is working and that we will meet the key dates it sets out. That being the case, the milestone for us will be 17th May when groups of up to 6 can once again meet indoors.

Our first session will therefore be on Tuesday 18th May from 10:00 – 1:00 followed by an afternoon session from 1:00 – 4:00. This will set the pattern for Tuesday and Thursday meetings until June 21st. We don't know how much freedom will be possible by then or how confident members will be feeling but we do hope that Shedding, as we used to know it, will start to resume.

May 18th will need to be a cautious beginning so pre-booking, distancing and masks will be essential and the communal kettle will have to remain in retirement for a few more weeks. To book your slot, call Tim on 07746 194163 or Dave on the number below. If you're already on the Shed WhatsApp group then that's ideal but, if not, we can soon join you up – a phone call is all that's needed.

The Shed committee have been keeping an eye on things over the winter so no burst pipes to worry about and we've even secured some funding to help us hit the ground running. When we do reopen, PPE will be in good supply and we'll even have a new dishwasher in the kitchen – so a nice clean mug to enjoy your brew when we re-commission the kettle!

Unit 4, Station Road Ind. Estate.  
[www.MenInShedsWinslow.org.uk](http://www.MenInShedsWinslow.org.uk)

Or for more info call Dave Saunders; 01296 714164



**Come and join us ..... You are very welcome!**

Our meetings are enjoyable and fun! We don't expect you to make jam or cake, just come along, see what we are about and meet up for a friendly chat, cup of coffee or glass of wine. You could try your hand at new activities and learn new skills, listen to interesting speakers and get involved in important issues of today. We also have an active walking group open to anyone who might like some company!

Until we are able to resume our normal meetings, we are holding our meetings via Zoom. As well as our normal chats (and virtual coffee) our forthcoming meetings will feature some entertaining and inspiring speakers.....

*Inside World of a Film & TV extra... Peter Hague, Downton Abbey & Killing Eve*  
*Medi SOS – Supporting Our NHS*  
*Say Cheese! ... Supreme Cheesemaker, John Pearson*

Please contact Angela Mayne on 715400 or [angela.mayne@googlemail.com](mailto:angela.mayne@googlemail.com)



Great Horwood  
Parish Council

## GREAT HORWOOD PARISH COUNCIL

### Useful contact details

#### Members of the Parish Council :

Please note that councillors now have a dedicated Parish Council email address. This is in order to comply with new Data Protection Regulations that came into force in 2018. It is good policy to keep council emails separate from private emails.

<b>John Gilbey</b> Chairman	01296 711915
<a href="mailto:johnwgilbeypc@gmail.com">johnwgilbeypc@gmail.com</a>	
<b>Caroline Cousin</b> Vice Chairman	01296 713548
<a href="mailto:carolinecousinghpc@gmail.com">carolinecousinghpc@gmail.com</a>	
<b>Robert Davies</b>	01296 712763
<a href="mailto:robert7_daviesghpc@yahoo.com">robert7_daviesghpc@yahoo.com</a>	07967 868881
<b>Dave Taylor</b>	07980 546484
<a href="mailto:daveghpc@btinternet.com">daveghpc@btinternet.com</a>	
<b>Angela Mayne</b>	01296 715400
<a href="mailto:angelamayneghpc@outlook.com">angelamayneghpc@outlook.com</a>	
<b>Jackie Goss</b>	01296 713135
<a href="mailto:jackiegossghpc@gmail.com">jackiegossghpc@gmail.com</a>	
<b>Julia Day</b>	01296 713752
<a href="mailto:julia.day49@gmail.com">julia.day49@gmail.com</a>	

#### Clerk to the Council

**Mrs Sue Brazier** 01296 714712  
[clerk@greathorwoodpc.org.uk](mailto:clerk@greathorwoodpc.org.uk)

<b>Parish Council Website</b>	<a href="http://www.e-voice.org.uk/ghpc/">www.e-voice.org.uk/ghpc/</a>
<b>Great Horwood Village Hall Bookings</b>	01296 715968
<b>Doctors Car Service</b>	07704 140110
<b>Winslow and District Community Bus</b>	01296 715786
<b>Aylesbury Vale Dial-a-Ride</b>	01296 330088
<b>Community Police Officers</b>	
<b>PCSO Andy Piotrowski</b>	Tel: 101
<a href="mailto:WinslowandDistrictNHPT@thamesvalley.pnn.police.uk">WinslowandDistrictNHPT@thamesvalley.pnn.police.uk</a>	



## PARISH PUMP



Great Horwood Parish Council

### LOCAL ELECTIONS



You will no doubt be aware that Local Elections are

taking place on 6th May. As usual, the Polling Station for Great Horwood will be the Village Hall. Every effort will be made to ensure this is a safe environment during these uncertain times. Please make sure you wear your mask and bring your own pen/pencil. If however, you would like to apply for a postal vote, you should call 01296 585701 for an application form or alternatively, log onto <https://www.aylesburyvaldc.gov.uk/voting-and-elections> and follow the link. The deadline for applications is 5.00pm on 20th April for postal votes or 5.00pm on 27th April for proxy votes.

### EXTENSION OF 30MPH SPEED LIMIT



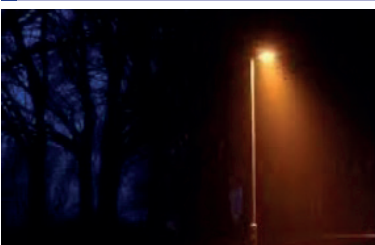
You may have noticed the 30mph speed limit has been extended beyond the Croudace development. I'm sure you will agree it's hard to miss and we hope it has the necessary impact concerning speeding in the village. The MVAS device will also be established near Townsend Cottages once it is moved again from its current site in Winslow Road.

### PROPER COFFEE COMES TO GREAT HORWOOD

We hope you have been enjoying coffee and home-made cakes from the Proper Coffee pop-up van on The Green. The Land Rover's first visit coincided with the first stage of the easing of lockdown and many villagers were able to take the opportunity to enjoy the sunshine and have a socially distanced catch-up with a friend. At the time of going to press it is intended that the proprietor will visit on Tuesday's. Please check the Facebook village page for an update on timings each week.



### REPORTING A STREET LIGHT FAULT



There has been a number of faulty street lights in the village recently. If you notice a street light that isn't working, could you please let me know so I can report it to E.on, our

electricity supplier, who will replace the bulb as soon as possible. There is no need to report it on FixMyStreet as Buckinghamshire Council are not involved in this process.

### ANNUAL PARISH MEETING, 19TH APRIL AT 7.30PM, VIA ZOOM

The Annual Parish Meeting will take place on Monday 19th April at 7.30pm via Zoom. The Chairman will be reporting on the last year's work of the Parish Council and future plans. Representatives of village organisations will be invited to attend and report on the past year and their plans going forward as lockdown is eased. If you would like to attend the meeting to celebrate all the hard work of village organisations, please see joining instructions below.

### WELCOME TO GREAT HORWOOD

A big welcome to our new residents! There have been many people moving in and out recently. We hope you are settling in and enjoying our lovely village community. Would you like to receive a Welcome Pack? This has recently been updated and includes information on village organisations, the School, Pub, Church and the local area. Please contact John Gilbey by email on [johnwgilbeypc@gmail.com](mailto:johnwgilbeypc@gmail.com)



The date of the next meeting is Monday 12th April at 7.30pm. Minutes of meetings can be found on the noticeboard and the Parish Council website [e-voice.org.uk/ghpc/](http://e-voice.org.uk/ghpc/) Meetings will continue to be held remotely via Zoom as Government guidelines encourage this at the present time. If anyone wishes to attend the PC meetings, please email a formal request to me together with any points you may wish to raise. You will then be sent a link to join the meeting via Zoom.

Sue Brazier, Parish Clerk Great Horwood  
[clerk@greathorwoodpc.org.uk](mailto:clerk@greathorwoodpc.org.uk)

### APRIL 2021 DIARY

Wed	7	Bins: <b>Green</b> and food bins
Mon	12	Council meeting (by Zoom)
Tues	13	Bins: <b>Blue, Brown</b> and food bins
Mon	19	Parish meeting (by Zoom)
Tues	20	Bins: <b>Green</b> and food bins
Tues	27	Bins: <b>Blue, Brown</b> and food bins



Established 1990

**Your Local  
Window and Conservatory  
Specialists  
Products made to suit in  
UPVC**

*From Design thru' to completion ...*

**01296 712151**

Email: [NandGwindows@aol.com](mailto:NandGwindows@aol.com)

*FENSA Registered*

# Piano Lessons

PIANO TEACHER

Why not expand your mind and interest in music with a fully qualified teacher of over 30 years experience teaching youngsters and adults for fun and exams.

Call: Geraldine 07890 268387  
email: [gerryrb@btinternet.com](mailto:gerryrb@btinternet.com)



**Trevor Evans  
'Your Personal IT Man'**

PC Support, Secure Wireless Broadband and Home Networks,  
Anti-Virus and Anti-Spyware Support

I can help you solve your IT problems and requirements

A Friendly and Professional Service

Call or Email me for a No-obligation Chat

☎ 01296-714413

✉ [trevor@trevorevans.me.uk](mailto:trevor@trevorevans.me.uk)

**OPENING HOURS**  
Please check our website for up to date opening hours



**TWIGS NURSERIES**  
Windy Ridge, Thornborough, Buckingham,  
MK18 2DZ  
[twignurseries@gmail.com](mailto:twignurseries@gmail.com)

## INDOOR PLANTS AND POTS



**OUR ONLINE  
SHOP  
IS NOW OPEN**

**FAIR TRADE GIFTS &  
ORNAMENTS  
PERENNIALS  
SUCCULENTS  
SHRUBS & TREES  
POTS  
COMPOST  
BEDDING PLANTS  
METAL WORK  
TOOLS  
ROSES**

[www.twignurseries.com](http://www.twignurseries.com)  
order online now with free local delivery

# THE PLUMBER

Apprenticeship Served 1972 - 78

City and Guild Qualified

**ON CALL EVERYDAY**

Domestic and Commercial Installations,  
Maintenance and Repair Service.

- 💧 Burst/Leaking Pipes
- 💧 Blocked Sinks/Toilets
- 💧 Hot Water Tanks
- 💧 Overflows
- 💧 Showers
- 💧 Radiators and Pumps
- 💧 Garden Taps/Water Butts
- 💧 Fault Finding
- 💧 FREE WRITTEN QUOTE

Call The Plumber Anytime

**07970 317843**

theplumber@email.com

*1<sup>st</sup> aid for your plumbing*



## HomeGym Equipment available for hire



- Treadmills
- Cross Trainers
- Bikes
- Rowing Machines
- and much more



Refer a friend  
for a weeks  
**FREE HIRE**

**Call 0800 043 2148**

enquiries@homegymuk.com

www.homegymuk.com



## THE CUTTING CORNER

Est 1998

Traditional Barber Shops



### NEW LARGER SHOP NOW OPEN

#### WINSLOW

Opening times:  
Tues, Weds & Fri 9am-6pm  
Thurs 9am-7pm  
Sat 8.30am-5pm

2a High Street  
Winslow  
Buckinghamshire  
Tel: 01296 715240

#### BLETCHLEY

Look online for opening hours.

140 Buckingham Rd  
Bletchley, Milton Keynes  
Tel: 01908 375987

Appointments available  
Thursdays and Fridays at  
74 High Street, Winslow.  
Book online via our  
website



www.cutting-corner.co.uk

FREE PARKING! Find us on Facebook



## RK Plumbing and Heating

- Bathroom Installation
- Central Heating Systems
- All Plumbing Work Undertaken
- Landlord Gas Safety Certificate
- Breakdown and Repairs

FOR A JOB WELL DONE

To get a free quote  
Call Rick on 07720 265645

or

email: [rick@rkplumbing.net](mailto:rick@rkplumbing.net)  
[www.rkplumbing.net](http://www.rkplumbing.net)

**GAS**  
**safe**<sup>®</sup>  
REGISTER  
Reg. No. 191568

## Shaun Guard TV & WIFI SERVICES



- Aerials - repaired & supplied and poor reception solved
- Satellite - Sky Q dish upgrades, discreet dish installation
- Internet - blackspots cured, data cables to your TVs
- TVs - hung on your wall or set up and tuned
- CCTV & Door Entry - domestic installations

OXFORD AERIALS  
[www.oxfordaerials.co.uk](http://www.oxfordaerials.co.uk)  
Call Bicester  
01869 879111

To advertise or submit articles

email:  
[editor@ghfocus.com](mailto:editor@ghfocus.com)



### Buckingham Wills & Probate

Part of Bicester Wills Ltd

- Standard Single Will - **£199**
- Standard Mirror Wills - **£299**
- Lasting Power of Attorney  
Property & Financial or  
Health & Welfare - **£325 each**  
Both types for one person - **£500**  
Both types for a couple - **£950**
- Probate Assistance from - **£1,200**
- Prepaid Funerals Plans - from **£1,700**

Home visits  
no extra  
charge!!

Gail and Lesley offer a friendly  
estate planning service



Come in and see us  
The Garage, Castle Street,  
Buckingham, MK18 1BS  
or phone 01280 811201



[lesley@buckinghamwillsandprobate.co.uk](mailto:lesley@buckinghamwillsandprobate.co.uk) 01280 811201

[www.buckinghamwillsandprobate.co.uk](http://www.buckinghamwillsandprobate.co.uk)



## Quality Decorators

Over 15 years experience

- ∞ Interior and Exterior
- ∞ Hand Painted Kitchens
- ∞ Airless Spray System
- ∞ Free Quotations and Friendly Advice

### Contact

01280 816699

07941 054 831

[www.callinghams.com](http://www.callinghams.com)



**Dulux**  
TRADE  
Trade & Trusted

# MICK WOOD

## Heating Services Ltd

**SERVICE, REPAIR & INSTALL**  
**OIL FIRED BOILERS**

We are Grant G1 & Worcester AI approved boiler installers who are able to offer longer warranties at no extra cost to you.

All installations are to Oftecregulations.

**OIL FIRED COOKERS**  
(Service & breakdown only)

\* Prompt personal attention

\* Oil tank gauges fitted

\* Power flushes



Registered  
Technician

**Tel: 01296 730 670**

**Mobile: 07979 645 472**

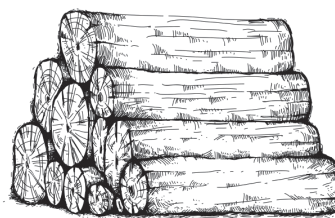
# Jason's Logs

Good quality logs delivered  
in full and half loads.

Garden clearance,  
Tree management  
Pruning services

Based at Edgecott

**Tel 07961 538035**



## Chartered Accountants and Business Advisers

For all your accountancy needs

Bookkeeping services	Accounts preparation
Corporation Tax	VAT Returns & services
PAYE Returns & services	Company formation
Company secretarial work	Tax planning advice
Self-Assessment	Tax Return preparation

**The Barn, 11a Queen Catherine Road,  
Steeple Claydon, Bucks MK18 2PZ**

Contact us for a free consultation

Tel: 01296 738668    01296 826177

Mob: 07812 026346

Email: [office@ajrandco.co.uk](mailto:office@ajrandco.co.uk)



Chartered  
Accountant  
& Business  
Adviser

**AJR  
&Co**

## Window Cleaning

AND GUTTER CLEARING

WINDOWS CLEANED REGULARLY,  
ONCE EVERY 2 MONTHS,  
INCLUDING ALL FRAMES AND DOORS  
FOR NO EXTRA COST.

**CONTACT CARL ON**

**07979 395 101**

or

[countryhousecleaning100@gmail.com](mailto:countryhousecleaning100@gmail.com)

FOR A FREE QUOTE.

also PRESSURE WASHING  
OF PATIOS AND DRIVEWAYS

# **D. Johnston**

## **Heating & Plumbing Solutions**

**Boiler installations / servicing / repairs**

**Oftec registered oil boiler specialist**

**Gas safe registered**

**Landlord Safety Certificate**

**Full Central heating Installations**

**Under Floor Heating**

**General Plumbing**

**Power flushing**

**Pressurised hot water systems**

**Bathroom installations**



[www.d.johnstonhps.co.uk](http://www.d.johnstonhps.co.uk)

Email: [djohnstonhps@outlook.com](mailto:djohnstonhps@outlook.com)

Tel: 01296 655169 / Mob: 07702 036217

# Precise PVC-u Building Supplies Ltd

Suppliers of Building Plastics

Precise PVC-u Building Supplies Ltd is a family run company based in Bletchley, Milton Keynes. We are established since 2003 and pride ourselves on our friendly and informed customer service.

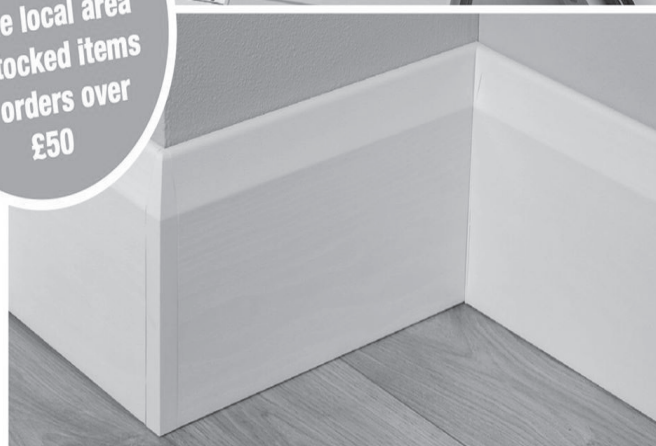
Our experience in the trade ensures that we supply the best quality PVC products to all our customers. We guarantee next day delivery on all of our stocked items. We are a supplier of a wide range of plastic building products. Many of our customers use our services like a manufacturers and suppliers as we can order any product that is currently not in stock.

We are suppliers for window fitters, builders, plumbers and DIY enthusiasts. Whether you're an individual who likes home improvements or a professional window fitter we are able to supply you with all the necessary materials. Come down to the industrial estate and see how we can save you and your company money on all your PVC supplies.

## Some of our specialist PVC-u products include:

- Fascias, soffits and guttering fixtures and fittings
- Window sills
- Skirting boards
- Draining pipes
- Door panels and accessories including cat flaps and letter boxes
- Lead Roofing
- Polycarbonate for lean two's and conservatories
- Underground drainage
- Trims, pins, nails, tools bagged sand and cement
- Silicone, solvents and adhesives

**FREE**  
next day delivery  
to the local area  
on stocked items  
on orders over  
£50



**MK ONE Business Centre**

**Unit B, 12a Romar Court, Bletchley, MILTON KEYNES MK1 1RH**

**t: 01908 270 994 e: sales@preciseupvc.co.uk**

Editor: David Brazier editor@ghfocus.com  
 Typing & Layout: David Brazier, Andy Gibbs.  
 Printing: Harlequin Press Ltd.  
 Copy deadline: 15th of month before publication.

Distribution: June Margerrison, Ann Biggins, Edwina Daymond, Louise Edwards, John Gilbey, Valerie Hancock, Duncan Hogston, Cathy Holland, Ian Lamberton, Gary Lee, Angela Mayne, Gill Wood, Kathy Thompson, Sylvia Whitehall.

Available online at: [www.e-voice.org.uk/ghpc](http://www.e-voice.org.uk/ghpc)

## Winslow Community Bus

www.winslowbus.com  
 wdcbenquiries@btconnect.com  
 Tel: 01296 715786



### Scheduled Service Update

We are now running our Wednesday Winslow Market Service.

Due to government restrictions, and the need to keep yourselves and our drivers safe, we have put in place strict guidelines for our drivers and passengers.

To comply with current 1 metre + social distancing, we have removed some seats as we are only able to transport 6 passengers at any one time. It will also be impossible to use the tail lift while maintaining a socially safe distance, so you will need to be able to board the bus unaided using the main door. The bus has been professionally cleaned ahead of resuming our service and we will ensure that the bus will be cleaned by our drivers between each scheduled journey, using alcohol-based cleaning products.

**We are providing this limited service on the strict understanding that passengers travel entirely at their own risk. While we have made every effort to make the bus as safe as possible to travel in, we ask that all passengers follow the below guidelines:**

- Your place on the journey must be pre-booked by calling the WDCB Coordinator on 07483 336440
- We will not accept cash on the bus, so any payment must be organised prior to the journey with the WDCB Coordinator
- You must complete a Contact Form prior to the journey and give it to the driver (you will only need to do this for your first journey). This will only be used as part of the track and trace process.
- Face coverings must be worn whilst boarding and travelling on the bus
- Hand sanitiser must be used before boarding the bus and when leaving your seat to exit the bus (sanitiser supplied on the bus)
- You must take the rear-most available seat when boarding the bus
- You must exit the bus one at a time, with the front seats exiting first

**Passengers are not to travel on the bus if they or any member of their household are displaying any signs of the COVID-19 virus.**

**Should you develop COVID-19 symptoms in the days following your journey on the bus, you must let the WDCB Coordinator know.**

**Our aim is to restart all of our scheduled routes over the coming months.**

**Excursions and hires remain suspended for the foreseeable future.**

Lynne King WDCB Co-ordinator

NB: Harrys of Winslow is due to reopen 1st April Co-op is due to reopen on 16th April.

Sadly, the TSB Bank is due to close on April 21st.

### Every Wednesday morning – Winslow Market Service

Pick up St James Church, Great Horwood 10.10. Return 11.51.

FREE with a bus pass, otherwise only £3.00 return. Call for more information on times, or visit our website.

### HOLLAND ENGINEERING SERVICES



**MOT TEST STATION**  
**Motorcycle servicing & repairs**  
**Quads & Lawnmowers**  
**Parts and tyres**  
**Mig/Tig Welding**

Salden Crabtree Farm  
 Whaddon Road MURSLEY Milton Keynes MK17 0PR  
 Tel: 01296 728693  
 Mobile: 07879 427205



### THE IRON LADY IRONING SERVICE

01908 504080

(Mobiles: 07733 120741 & 07713 215362)

**Do you REALLY DISLIKE LAUNDRY & IRONING?**  
*If so, we have a service to suit you.*

A weeks washing? just a few shirts? or is it the entire package; washing, drying and ironing? You're not alone... At The Iron Lady we offer a service thats daily, weekly, fortnightly, monthly or even just when it gets too much!

*Make your life simpler & call us. Fast, friendly and reliable.*

Washing and/or Drying Service  
 Ironing Service

Drop off's  
 Welcome

Pick up or delivered to your door

Mon-Thurs 8am-1pm

e: [tandldec@aol.com](mailto:tandldec@aol.com)



Unit 2 • Bacon House Farm • Warren Road • Little Horwood • Milton Keynes • MK17 0PS