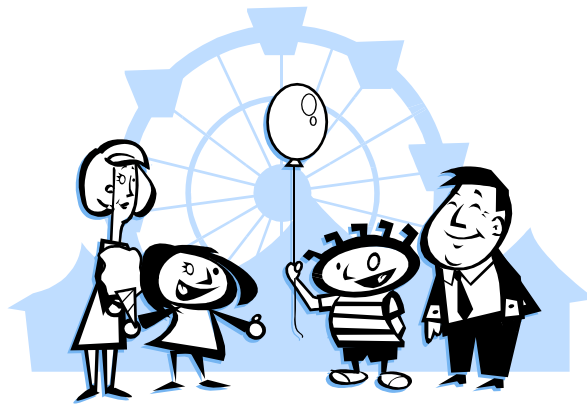


# FOCUS

Great Horwood Village Fete  
Sat 2nd July  
1 pm  
on The Green

BBQ

Silver Band



Bouncy Castle

School Dancers

*Cakes, Plants, Teas, Children's Games  
and Much More!*



# BUCKINGHAM LITERARY FESTIVAL

1ST - 3RD JULY 2016

The inaugural Buckingham Literary Festival on the University of Buckingham Campus

Featuring: **Louis de Bernieres**, author of *Captain Corelli's Mandolin*;  
BBC Arts Editor, **Will Gompertz**;  
TV pundit and author, **Oliver James**;  
**Rebecca Fraser**; **Benet Brandreth**; **Sinclair McKay**; **Sharon Bolton**; **Judith Flanders**; **Judith Allnatt**; **Saul David**; **Victor Sebastyen**  
and featuring in "**Sunday Crimes**" many of the latest crime authors.  
**The Wimpy Kid** will also provide something to keep the children amused.

All in the comfortable Radcliffe Centre at the University of Buckingham  
For more information go to [www.bucklitfest.org](http://www.bucklitfest.org) or contact [christopher@bucklitfest.org](mailto:christopher@bucklitfest.org)

OPENING HOURS  
Tuesday to Saturday: 9am-5pm  
Sunday: 10am-4pm  
Bank Holidays: 10am - 4pm  
Check website for any changes



TWIGS NURSERIES  
Windy Ridge, Thornborough,  
Buckingham, MK18 2DZ  
[www.twignurseries.com](http://www.twignurseries.com)  
01280 816 855

## SPRING/SUMMER BEDDING

MANY DIFFERENT VARIETIES  
IN POTS & SIXPACKS  
AS WELL AS MANY OTHER SPRING/SUMMER PLANTS

ORDER YOUR HANGING BASKETS NOW

HANGING BASKETS ROSES TREES SHRUBS HERBACEOUS PLANTS  
ALPINES HERBS BEDDING PLANTS SUCCULENTS VEGETABLES  
WILD BIRD FOOD GARDEN SUPPLIES AND ACCESSORIES

ALSO SERVING SPECIALTY COFFEE, TEA AND  
OTHER TREATS

## St James' Services for June

5th June	11.00am	Holy Communion
12th June	11.00am	Come and Praise
19th June	11.00am	Holy Communion
26th June	8.00am	Holy Communion (1662)
26th June	11.00am	Service of the Word

## Sidesmen

S Barfoot
R Hemphill
I Lamberton
-
J Margerrison

## Reader

J Brigden
T Brazier
C Finnemore
-
J Margerrison

## Intercessor

D Brazier
S Brazier
I Lamberton
-
Clergy

**Church Key March:** Rita Essam - tel 714424

## Celebrating the Queen's Official Birthday on Sunday 12th June



St James' will be celebrating the Queen's birthday with a special Come and Praise service on Sunday 12th June. A special celebration cake and prosecco will be served after the service. All welcome.

## Pimms and Hymns



Come and join us for a drink or two, canapés and musical accompaniment as we sing well known popular hymns on The Green on Sunday 19th June at 5pm. All welcome

## Lighting of the Church Tower



The Church was lit on the 29th April to remember the passing of Elsie Hampson.  
*Ian Lamberton*

## London Marathon - THANK YOU



I ran the London Marathon on 24th of April. It involved 6 months of training and some of you would have seen me plodding up and down Pilch Lane. My goal was to finish in under 5 hours and I achieved that, completing the run in 4 hours 37 minutes, half an hour faster than my 2013 time. And I ran all the way - didn't walk one step and didn't stop even to go to the loo.

Last year my brother was diagnosed with Prostate Cancer so I thought I'd raise money for the **PROSTATE CANCER UK** charity.

A lot of people in the village, some village organisations and businesses very kindly sponsored me. I didn't know some of the people who donated and I was touched that they were prepared to give so generously, along with people who do know me. **As a result, I have raised a total of over £2,700. Thank you again to all of you who sponsored me.**

It really kept me going particularly towards the end of the race when I was running out of steam and starting to conk out.

*Dean White*



## Great Horwood Scout and Guide Group

### New Beaver Colony

We are hoping to restart the Beaver group from **September 2016**. Beavers is aimed at children aged 6-8, and is the youngest section in the Scout group.

**There will be a meeting for all interested parents and children on Tuesday 28th June at 6pm in the Scout Hut located at Great Horwood School.**

Please contact Clare Lewis-Evans for further information or to register interest by email at:

[Clare@lewis-evans.co.uk](mailto:Clare@lewis-evans.co.uk)

## Village Hall



Apart from our usual lettings we have had two unusual requests this year. Firstly, I was contacted by a member of English Heritage to see if we could accommodate members of the re-enactment society who were filming at the Devil's Horsemen for the BBC; they were filming a programme about the Battle of Hastings. Next, I was asked by a cycle club if the hall could be used as a food station for a charity cycle race they were organising. Both events caused us no problems and made a good contribution to the village hall funds.

There is a calendar on the hall notice board to help you check if the hall is available.

## Art and Craft Club

Our members have just discovered the pleasure of Encaustic Wax painting. In layman's terms it is painting with a 'travel iron' and beeswax on china clay covered card. You don't have to be artistic to create a mini masterpiece and we had a fantastic morning, so much so that it encouraged some of our members to buy their own sets. If anyone would like to have a try, or has a dry travel iron they would like to get rid please contact Gill on 01296 712165.

## Whist Group

We had a few gaps in our calendar to accommodate other groups but we hope to be meeting on a regular basis again. June dates: 9th, 23rd. July dates: 7th, 21st.

*Gill Wood*



**Starting  
your  
own business?**

**Or need help  
with your existing  
business?**

**Do you need an  
accountant/tax  
adviser?**

*Clear, down to earth financial advice for all  
personal and corporate accountancy  
requirements.*

**Call for a free half hour consultation**

T: 01296 738668

M: 07812 026346

[www.ajrandco.co.uk](http://www.ajrandco.co.uk)



**Chartered  
Accountant  
& Business  
Advisor**



4Beauty is a multi award winning salon based in Whitchurch, Buckinghamshire. Our aim is to treat each and every client as an individual and to meet their expectations every time they visit our salon.

Our Therapists are trained to the highest of standards and professionalism along with technical expertise required for some of our ultimate and advanced facial procedures.

We offer premium brand products and provide quality treatments that undoubtedly make us one, if not the best beauty salon in Buckinghamshire. These include:

- Declor & Guinot Facials
- Declor Body Treatments
- CND Spa Manicures & Pedicures
- CND Shellac Manicures & Pedicures
- CND Minx Pedicures
- Bio Sculpture Natural Nail Enhancements
- OPI Gel Colour Manicures
- Brazilian Waxing with Lycon Wax
- PhD Waxing
- Lash Perfect Individual EyeLash Extensions
- LVL Lift Volume and Length Eyelash Treatment
- Special Occasion Makeup with New CID Cosmetics
- Wedding Packages
- Mother to be Packages

Monday	11:00am - 6:00pm
Tuesday	9:00am - 8:00pm
Wednesday	9:00am - 6:00pm
Thursday	9:00am - 8:00pm
Friday	9:00am - 6:00pm
Saturday	9:00am - 6:00pm
Sunday	CLOSED

**4beauty**

4Beauty LTD, 56 High Street,  
Whitchurch, Buckinghamshire,  
HP22 4JS  
T. 01296 640644  
[www.4-beauty.com](http://www.4-beauty.com)



**Sunday 5th June – Charity Quiz ,  
Free Buffet. Teams must be registered in advance.**

**Saturday 6th August – Summer Party with Red Bullets  
live and visit from Howe's Fish and Chips.  
Tickets £5 from pub**

1 Winslow Rd, Great Horwod, Milton Keynes  
Buckinghamshire MK17 0QN

☎ **01296 712556**

✉ [info@swaninngreathorwood.co.uk](mailto:info@swaninngreathorwood.co.uk)

📘 The Swan Inn Great Horwood

🌐 [www@swaninngreathorwood.co.uk](http://www@swaninngreathorwood.co.uk)

## Horwode Pece

Val Porritt is stepping down from the committee after nearly six years; we thank her for all her help over this time.



We are organising the topping up of the woodchip in the play areas to hopefully take place at the beginning of June and in time for the **Picnic on the Pece. This takes place on Sunday 19th June from noon onwards.** Giocosos have kindly agreed to play for us and there should be a few organised games on the day courtesy of the Youth club, so pack your picnics and come along for a relaxing afternoon. See ad on back page.

*Cathy Holland. Committee member*



Berkshire  
Buckinghamshire  
Oxfordshire



## Pilch Field summer Work Parties

Please come along to a work party at our local Berkshire, Buckinghamshire, Oxfordshire Wildlife Trust (BBOWT) reserve, at the end of Pilch Lane (on the corner just before you get to the chicken farm).

- Saturday 18th June
- Sunday 17th July
- Sunday 21st August

All work parties are 2-4pm. All tools provided and instruction given. Plenty of opportunity to appreciate the flora of these lovely fields. Please bring sunscreen/hat and suitable shoes. The main task is to dig up hawthorn scrub.

Please contact Ann Biggins for more information on 0796 1960802 or 01296 714052 or email [annieqq@hotmail.co.uk](mailto:annieqq@hotmail.co.uk)

## Great Horwood Silver Band



The band is now developing a new web site which is already online. We would like to discover more about the band between the two world wars, as information at the moment is very sketchy. We would be very grateful for any photographs or press cuttings concerning the band particularly during that period. If anyone could provide information or photographs we would take great care of them and scan them for our records and possibly for the website. We may also be running a competition for the best photos of the band at a later date: watch the website for further information. [www.greathorwoodband.com](http://www.greathorwoodband.com)

Our next engagements are **Adstock Open Gardens Sunday 5th June 3pm, Courteenhall House Northants on Saturday 11th June 2pm and Thornton College Fete on Sunday 19th June**, time to be advised.

100 Club winners for April were:

- Keith Mould £12
- Ian Hart £8

*Beryl Lack*

Web page [www.greathorwoodband.com](http://www.greathorwoodband.com)

<b>J Clarke Roofing</b> 07870 795964	Tiling
	Slating
	Leadwork
	Repairs
	Old & New Roofs
The Old School House • Water Stratford Road • Finmere • MK18 4AT	



## GREAT HORWOOD FOOTBALL CLUB 50th ANNIVERSARY CELEBRATIONS 1966 - 2016

Great Horwood Football Club will be celebrating its 50th Anniversary this summer and would like to invite all past and present players plus families to join the club in marking this achievement on **Saturday 2nd July 2016**.

The Timetable for the Day's Events is as follows:

- 1.00pm - In conjunction with the village Fete, the afternoon kicks off with a display of past and present trophies, awards, photographs and statistics outlining the club's history and achievements since its affiliation with the Berks & Bucks FA.
- 3.00pm - *'Returning Heroes'*, Ex Senior players are invited to join together and take part in a match at Castle Fields with the game being structured to suit numbers etc.
- 5.00pm - The end of season Junior presentation will take place on the Green.
- 7.00pm - Following the Junior Presentation there will be a chance for everyone, past and present, to catch up and reminisce.

During the Junior presentations and evening there will be a bar, food and entertainment available.

To register your interest in taking part in the 'Heroes' match or to find out more details about the day please contact the club secretary, Darren Sirett. ( e-mail: [darren\\_sirett@hotmail.com](mailto:darren_sirett@hotmail.com) ).

# Lannails



Professional Nails & Beauty by Leanne

Acrylic Nails & Gel Nail Polish  
Manicures & Pedicures  
Foil Nail Wraps  
Waxing & Tinting  
Gift Vouchers

Leanne Hammond  
Whaddon Road, Little Horwood

tel: 07825777497

e-mail: [lannails@btinternet.com](mailto:lannails@btinternet.com)

web site: [www.lannails.co.uk](http://www.lannails.co.uk)



# DON'T THINK YOU HAVE MOVES?

So, you're not a dancer.  
We only have one thing to  
say to that -

**WHO CARES!**

Just come to class and  
move!

**JAZZERCISE**

DANCE MIXX • INTERVAL • STRIKE • FUSION • STRENGTH • CORE

**Winslow CofE School**  
Monday & Wednesday 7.30pm

**St Laurence Room, Winslow**  
Friday 9.30am

**Mursley Village Hall**  
Saturday 9.30am

Plus other classes in Leighton Buzzard, Aylesbury & Tring

Keri Donnellan - 07900 987230, [jazzercise1@hotmail.co.uk](mailto:jazzercise1@hotmail.co.uk)  
[www.facebook.com/JazzerciseBucksBedsHerts](http://www.facebook.com/JazzerciseBucksBedsHerts)

## Concerned about Security? Have you thought about CCTV?

We can install from 1 to several cameras to view on your Tablet, Smart Phone, Computer, TV or any combination of these devices. Just think, you could be on holiday and still be able to see who is at your front door, breaking into your shed or at the back of your shop.

All installations conform to Data Protection Laws.

Call us on

**01296 712113**

For a no obligation estimate

**City & Guilds** qualified  
3456-1

**connectedhome**

**cai**  
Trade Association for  
Content Delivery  
CAI Plus Membership No. C0718

TV and Satellite Ltd  
43 Spring Lane  
Great Horwood  
MK17 0QP  
[www.tvandsatellite.co.uk](http://www.tvandsatellite.co.uk)  
[info@tvandsatellite.co.uk](mailto:info@tvandsatellite.co.uk)



**Don't forget we also do Aerials and Satellite TV**



Great Horwood  
Parish Council

## Car Parking in Great Horwood

### - A REQUEST

We'd like to thank everyone who helped 'Clean for the Queen' on the 17th of April.

The weather was kind to us. Friends, neighbours, Rainbows, Brownies and Great Horwood School Deputy Head Mr Watts all turned out and did a great job.

### **We're now going to ask you all to go one step further...**

In this day and age with many homes having multiple vehicles, parking is becoming increasingly tricky.

It may seem a good idea to park partially on the path or off the road altogether, but this has become a problem in some areas of the village.

One of the Parish Council's priorities is the village environment, and this includes safeguarding parents walking children and the disabled. This means the paths must be clear for pushchairs, parents holding children's hands, mobility scooters and residents with impaired vision who need aids such as sticks for the blind.

So please help us to achieve this by:

1. Where the path is narrow **do not park partially or fully on the path**, ie Little Horwood Rd or Willow Rd.
2. Where the path is wide, ie The High St, **do not park off road**, if partially parking on the path, leave plenty of room for residents to pass. And be aware not to park next to another obstruction like a bin, lamp post or railings.
3. Where parking is extremely difficult in the more built areas, please be a considerate neighbour when parking and keep your hedges and trees trimmed back so they don't obstruct the path, this will free up path space.

And last but not least, especially at weekends when there are more of us walking about the village, if at all possible could you squeeze another car on your drive even if you have to shuffle around knowing who leaves first in the morning.

This is a problem that is likely to get worse not better so any little changes that help will be very much appreciated.

*Parish Council*

## NOTICE BOARD

### For sale

Large 14 foot (4.3 metre) diameter  
Trampoline: £50

In good condition. Cost £400 new.

Includes (unused) weatherproof cover

Phone Dean on 01296 713828



## Brookside Engineering

Individually hand crafted wrought ironwork and metalwork.

Side Gates  
Drive Gates  
Iron Railings  
Security Grilles  
Weather Vanes  
Fire Hoods  
Fire Baskets

Restoration and Repair  
Please visit my website

[www.brookside-engineering.com](http://www.brookside-engineering.com)

01296 715059 / 07976 983444

Dave Spooner, Brookside Farm, Gt Horwood Rd Winslow, Bucks MK18 3LY

# MICK WOOD

## Heating Services Ltd

For service repair & installation  
of

**OIL FIRED BOILERS  
OIL FIRED COOKERS  
OIL TANKS**

- \* Prompt personal attention
- \* New boiler installations
- \* Oil tanks supplied & fitted
- \* Oil tank gauges fitted



Registered  
Technician

Tel: 01296 730 670

Mobile: 07979 645 472



Once again the PTA has been working hard organising and running some fun events!

Alan at **Claydon Racing** in Winslow ran the Tote at our recent Race Night (and sponsored 2 races!). Thanks to him the night was a great success and we made over £400 for the school. Thanks also to **ACC FM Ltd, Marble Arts Ltd, Winwood Construction Ltd** and **The Bell at Beachampton** who also sponsored races.

As we go to print we are still counting the takings from our **Table Top Sale**. I hope you got a good bargain and enjoyed our BBQ.

As we reach the end of the school year, we wanted to say a massive thank you to everyone who has supported the school this year by helping out at PTA events, coming along and spending your money and sponsoring our events. We still have a couple of events to go, but so far this year we have made a profit of over £6k for the school, which has enabled the school to buy a whole list of things that the school budget just can't stretch to including:

- 6 iPads (and covers)
- 6 Globes
- Library books subscription (without this annual funding, our books would quickly become damaged and out of date)

- Sing up annual subscription (this provides access to hundreds of specially arranged songs, teaching tools and supporting resources)
- Easter Eggs & Christmas Crackers
- Microphones & PA system
- Maths puzzles and games
- School trip transport subsidy
- Funding towards the Year 6 leavers' event

One item that we are still looking at funding has been the building of some raised vegetable beds for the reception class to use. We were hoping to be able to put in a couple of small beds so that the children can plant their own veggies to support their learning about 'how things grow'. **Could anyone in the village help out with some time and/or materials to build a couple of small beds?** If so could you drop an email to [greathorwoodpta@gmail.com](mailto:greathorwoodpta@gmail.com), or give me a call on 01296 292411.

On a personal note, this is my first year on the PTA and I have been amazed by how hard the PTA works to support the school, but also by how brilliantly **this village** supports its school, so on behalf of the PTA, the school, and most importantly the children, **THANK YOU ALL.**

*Debbie Huskinson*

*Great Horwood School PTA. Registered Charity No 1047149*



## **The Queen's 90<sup>th</sup> Birthday Celebration** (sssh !! and the Landlords birthday)

**THE CROWN Great Horwood**

**Saturday 11<sup>th</sup> June 4pm-late**

**“LIVE BAND” The Cantells**

**Hog Roast (6-8pm)**

**Join us for birthday fun & games**

**No tickets needed but.....**

**Drop in to collect your wrist band prior to the day then you won't miss out on birthday treats**





## Queen's 90th Birthday Celebrations



The Village celebrated Her Majesty the Queen's 90th birthday on the 21st of April in very British Style with overcast skies and chilly temperatures. This did not, however, prevent a super turnout with some exuberant play on The Green by our younger residents.

Music was provided by the Great Horwood Silver Band. With "Happy Birthday", "Congratulations" and a super mix of tunes, the band set the tone and atmosphere for the evening. The WI generously supplied Buck's Fizz, juice for the children and laid on a lovely spread of cakes all of which soon vanished.



John Scholtens fulfilled his final duty as chairman of the Parish Council by proposing a birthday toast. Thankfully, the Beacon lit without mishap in the experienced hands of Andrew Fuggle. The extra warmth was most welcome as was the proximity of the Crown where revellers, particularly the boys, could find additional liquid refreshment.

The Parish Council would like to send a big thank to all those who helped to make the evening a success and everyone for turning out in such numbers on a nippy evening.

*Mandy Cliffe (Parish Clerk)*

**theWI**  
INSPIRING WOMEN

April was a very busy month for our group: we seemed to be constantly catering!

We had an entertaining theatre trip to see The Rocky Horror Show. Some of our members were unrecognisable in their outfits, and there were some interesting sights in the audience too!

The Queen's birthday celebrations on the green were a great success. Thank you to all of our members who kindly donated cakes and helped. The array of cakes (see photo) was extremely impressive and our Bucks Fizz seemed to go down well.

The Great Ormond Street evening was a huge success and we donated £615 to the charity. It was very well attended and again our thanks to everyone who donated cakes and biscuits and helped on the evening. £219 of the total amount was from the raffle, so thank you very much to everyone who donated raffle prizes. We would like to thank Graeme at The Swan Inn Great Horwood, Waitrose, Aldi, Fox Hollow Alpaca Farm, Marble Arts, The Bell at Beachampton and Moores Landscape Services for their generous donations.

We had a fascinating May meeting with a portrait demo from Zoe Day. She used some very interesting



techniques and produced a lovely portrait of one of our members using graphite powder.

Our next meeting on **14th June** is with Fiona Abel-Smith telling us about using polymer clay and we will have the opportunity to make a pendant.

Guests are always welcome. For more information please contact Karen Wilkinson on 712933 or Angela Mayne on 715400

*Angela Mayne*

## HOLLAND ENGINEERING SERVICES



**MOT TEST STATION**  
**Motorcycle servicing & repairs**  
**Quads & Lawnmowers**  
**Parts and tyres**  
**Mig/Tig Welding**

Salden Crabtree Farm  
 Whaddon Road MURSLEY Milton Keynes MK17 0PR  
**Tel: 01296 728693**  
**Mobile: 07879 427205**

## GREAT HORWOOD PARISH COUNCIL Useful Contact Details



Great Horwood  
 Parish Council

### Members of the Parish Council

Mary Saunders <i>Chairman</i>	01296 713610
marysaundersghpc@outlook.com	
John Gilbey <i>Vice-Chairman</i>	01296 711915
john@gilbey98.freemove.co.uk	
Angela Mayne	01296 715400
angela.mayne@googlemail.com	
Jane Holland	01296 715704
jane.holland.313@btinternet.com	
John Huskinson	07984 524622
john.huskinson@yahoo.com	
John Gunn	01296 293157
john.gunn@aflglobal.com	

### Clerk to the Council

Mrs Amanda Cliffe  
 clerk@greathorwoodpc.org.uk 01296 715829

### Parish Council Website

[www.bucksinfo.net/greathorwoodpc](http://www.bucksinfo.net/greathorwoodpc)

Great Horwood Village Hall Bookings	01296 712165
Doctors Car Service	07704 140110
Winslow and District Community Bus	01296 715786
Aylesbury Vale Dial-a-Ride	01296 330088

### Community Police Officer

PCSO Wendy Taylor  
 Winslowanddistrictnhpt@thamesvalley.pnn.police.uk  
 Tel: 101



## ELECTRICAL CONTRACTORS



Full or Part Rewires/ Extensions  
 Replacement of old fuse boxes  
 Additional sockets or lighting points  
 New Supplies to :- Sheds, Garages, Ponds etc.  
 Storage Heater Replacements  
 General Troubleshooting/ Fault-Finding  
 Landlords' Insurance Inspections (EICR's)  
 Thatched Properties Insurance Testing  
**Free estimates**  
 Part P approved electrician



Contact Dean  
**Tel: 01296 712776**  
**Mobile: 07794 510980**  
 dean4832@aol.com



# THE CUTTING CORNER

Traditional Barber Shop



Opening times:  
 Tues-Fri 9am-6pm  
 Sat 8.30am-5pm  
 (Closed lunchtime 1pm-2pm)

74 High Street  
 Winslow  
 Buckinghamshire  
**Tel: 01296 714429**

- Free Parking
- No Appointment Needed

[www.cutting-corner.co.uk](http://www.cutting-corner.co.uk)

# The Trusty Spade

## Gardening Services

for all your gardening needs

- Lawn mowing*
- Hedge trimming*
- Digging and weeding borders*
- Winter tidy-up*
- Driveway or patio cleaning*
- Shed / fence painting*
- Shrub pruning & cutting back*

**Locally based dependable gardeners  
 committed to delivering a reliable  
 service.**

Please call today for a free and no obligation  
 quote for either regular maintenance or a  
 one-off visit.

**Adrian Plowman - 07934 343512**  
**Colin Wakeman - 07921 020781**



## Chairman's Monthly Report : Last Meeting - Monday 9 May 2016

Great Horwood Parish Council

This is to let you know that, to my great surprise, I am the new Chairman of Great Horwood Parish Council. I am taking over from John Scholtens who has resigned as Chairman and stood down from the Council.

John worked tirelessly in his year as Chairman and before that he served as Councillor for several years. He was the first Chairman of the Neighbourhood Planning Team and was deeply committed to the development of the Neighbourhood Plan. Both the community and the Parish Council owe him a great debt of gratitude for all that he has contributed.

I am looking forward to working with my fellow Councillors in the coming year in serving the local community in Great Horwood and Singleborough.

At the May meeting of the Parish Council there were a number of administrative matters to deal with. Firstly, the election of the Chairman and Vice-Chairman. I am delighted to say that John Gilbey has agreed to continue as Vice-Chairman so that the Parish Council, and particularly me, can benefit from his knowledge and experience. Representatives were elected to parish committees and outside bodies which councillors attend. It is helpful to learn from and share experiences with other parishes and organisations and to know that we are not alone in the issues that we face at this time of potential great change in North Buckinghamshire. The Parish Council also resolved to put in hand the procedure for the appointment of a new Councillor to fill the vacancy caused by John Scholtens' resignation.

Mick Wood, who co-ordinates the operation of the Moveable Vehicle Activated Signs (MVAS), reported on the recent SpeedWatch Campaign. Several motorists, who have been recorded driving at high speeds through the village, have been reported to the Police. It is hoped to have the necessary equipment in the village again shortly and to undertake more monitoring. The Council also noted residents' concerns about cars parked on pavements. Although village roads are quite narrow in places, parking on pavements is potentially hazardous for pedestrians, people with buggies, wheelchair and mobility scooter users. (See article on page 7).

The Council noted the report of the Horwode Pece Management Committee. This Committee and its volunteers achieve wonders in keeping our recreation ground in such good order and so well-equipped. We are very grateful for all that they do.

The Council thanked all those who were involved in The Queen's Birthday celebration. It involved a lot of hard work by everyone concerned and it was good to see so many from the community despite it being such a cold evening.

We will be working this year on the update of the Parish Plan but it is difficult to determine the appropriate course until the result of the outstanding planning applications is known as priorities will be different if the village grows substantially in size. This work will make a significant contribution when the Neighbourhood Plan is revisited in due course.

So far as Weston Road is concerned, the Planning Inspector has submitted his report to the Secretary of State and we await his decision. This will be on or before the 3rd of August so there is still a while to wait until the outcome is known. Another piece of the jigsaw will be the Vale of Ayelsbury Local Plan which is being prepared by Aylesbury Vale District Council. The formal consultation on the draft Plan will take place between July and early September.

**Finally, look out for a letter from AVDC about the changes in bin collection days which will come into effect on 7 June.**

For a more comprehensive report of the Parish Council meeting please read the minutes published on the website <http://www.bucksvoice.net/greathorwoodpc/>. This website also has updates of items on its latest news page.

If you have any items that you would like to bring to the Council's attention at any time please contact either the Clerk or any Councillor. We are always pleased to welcome residents to our monthly meeting during which there is always a public participation period. The next meeting is to be held at **7.30 pm on Monday 13 June 2016 in the Village Hall.**

*Mary Saunders*  
Chairman, Great Horwood Parish Council

### Vacancy for a Parish Councillor



Great Horwood Parish Council

Formally called a Casual Vacancy (source of the title of the JK Rowling novel), Great Horwood Parish Council would very much like to receive expressions of interest from any resident willing to become a co-opted member of the Council (should no election be called).

If you care about the Community, like meeting people, have time, patience and a bit of energy, you are the person we need to fulfil this very important role.

It isn't always easy to be a Councillor but it is absolutely essential to the running of the Parish.

Interested parties should contact the Clerk on [clerk@greathorwoodpc.org.uk](mailto:clerk@greathorwoodpc.org.uk) or **telephone 01296 715829 no later than 9th June**. An informal chat with a councillor can then be arranged so that interested parties can find out what is involved (prior to co-option at the PC Meeting on 13th June).

*Mandy Cliffe (Parish Clerk)*

# DIGGER DAVE



**ALL TYPES OF WORK Inc.**

**FOOTINGS, DRIVEWAYS, TREE STUMPS,  
DITCHING, TRENCHES, GARDEN CLEARANCE ETC.**

07976 983444

## FUN WAY DOG TRAINING at Little Horwood

Bespoke puppy training in your own home  
for puppies going through vaccinations.  
Classes for puppies, classes for adult dogs.  
Follow-on classes always available.

Contact Evelyn on 01908 502272.

Please visit the web-site  
or telephone me for further details

[www.funwaydogtraining.co.uk](http://www.funwaydogtraining.co.uk)



THE IRON LADY  
IRONING SERVICE  
01908 504080

(Mobiles: 07733 120741 & 07713 215362)

Do you REALLY DISLIKE LAUNDRY & IRONING?  
*If so, we have a service to suit you.*

A weeks washing? just a few shirts? or is it the entire package; washing, drying and ironing? You're not alone... At The Iron Lady we offer a service thats daily, weekly, fortnightly, monthly or even just when it gets too much!

*Make your life simpler & call us. Fast, friendly and reliable.*

Washing and /or Drying Service

Ironing Service Clothes Repair

Pick up or delivered to your door

[www.theironladyonline.co.uk](http://www.theironladyonline.co.uk) e: [theironladyunit2@aol.com](mailto:theironladyunit2@aol.com)

Drop off's  
Welcome

Mon-Thurs, from 9am  
[theironladyunit2@aol.com](mailto:theironladyunit2@aol.com)



Unit 2 • Bacon House Farm • Warren Road • Little Horwood • Milton Keynes • MK17 0PS



Established 1990

**Your Local  
Window and Conservatory  
Specialists  
Products made to suit in  
UPVC**

*From Design thru' to completion ...*

**01296 712151**

Email: [NandGwindows@aol.com](mailto:NandGwindows@aol.com)

*FENSA Registered*

# DICKINS

AUCTIONEERS LTD

## ANTIQUE & FINE ART AUCTIONEERS

### Monthly Auctions of Antiques & Fine Art

### Quarterly Picture Auctions Sporting & Country Pursuits Auctions

### General Auctions

### Partial & Total House Clearances

### Insurance, Probate and Family Division Valuations

The Claydon Saleroom, Calvert Rd.  
Middle Claydon, Buckingham.  
MK18 2EZ

Tel: 01296 714434 Fax: 01296 714492  
[info@dickinsauctioneers.com](mailto:info@dickinsauctioneers.com)

**C.T.MOWERS**

## Lawn Mower and Garden Machinery Service & Repairs

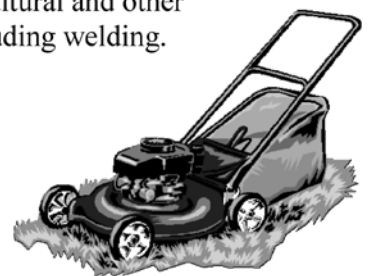
All makes and models of garden  
machinery undertaken.

(Please note, we do not carry out electrical repairs)

- Lawnmowers (including ride-ons)
- Strimmers, chainsaws,
- Garden Rotovators etc

Please enquire for agricultural and other  
machinery repairs - including welding.

Contact Chris at  
C.T.Mowers on:  
07976 980388



[www.ctmowers.co.uk](http://www.ctmowers.co.uk)

# Winslow Community Bus

www.winslowbus.com

wdcbenquiries@btconnect.com Tel: 01296 715786



Everyone is eligible to come on the bus, we pick up near to your house, please ring Sue for more information. \*Denotes bus pass accepted.

- Thursday 2nd June - Lunch at The Navigation Inn Stoke Bruerne, with time for 30-minute boat trip bookable on the day. £5 travel.
- Tuesday 7th June - Buckingham Bus\* 1 hour in town 1 hour in Tesco. Door to door!
- Thursday 9th June - Westcroft Bus\*
- Monday 13th June - Asda in Bletchley Shopping. M&S, H&M £4
- Tuesday 14th June - Visit Market Harborough - Historic Market Harborough is known for its beauty, wealth of good quality independent shops, indoor market and more than its fair share of nice places to eat and drink.
- Sunday 19th June - Seaside trip to Swanage. £20
- Thursday 23rd June - Westcroft Bus\*
- Tuesday 28th June - Local lunch at The Bell, Woburn. Great value meals. £5.00 travel.
- Thursday 30th June - Westminster to Greenwich boat trip, with time to explore Greenwich. £25
- Tuesday 5th July - Buckingham Bus\* 1 hour in town 1 hour in Tesco. Door to door!
- Thursday 14th July - Westcroft Bus\*
- Sunday 17th July - Trip to Eastbourne. Summer is here! £20
- Tuesday 19th July - Visit Chatsworth House. 2½ hour journey. £40 includes entrance.
- Tuesday 26th July - Visit Gaydon Motor Museum. The world's largest collection of historic British cars. £20.00 includes entrance.
- Thursday 28th July - Westcroft Bus\*
- Sunday 31st July - Day out in Brighton! £20

## Milton Keynes Theatre - please book as soon as possible to avoid disappointment.

All prices are for tickets in Band A price range (Circle or stalls) and travel.

Performances start 2.30pm unless otherwise stated. Door to door service!

Wed 29th June - Joseph & Amazing ...Coat. A sparkling family musical £22.50

Wed 28th September - Sister Act. A 'divine' musical comedy. £23.00

Wed 2nd November - The Commitments. The musical we've all been waiting for, over 20 soul classics. £30.00

## REGULAR COMMUNITY BUS SERVICES FROM GREAT HORWOOD

**EVERY WEDNESDAY - Winslow Market Day.** Full fare: £3.00 return.

The bus picks up opposite St James' Church at 10.10am and arrives in Winslow at 10.16.

The Return journey leaves Vicarage Road, Winslow at 11.45 and arrives back in Gt. Horwood at 11.51.

**2nd and 4th THURSDAYS in the month - Westcroft Shopping Centre.** Full fare: £3.00 return.

- The bus picks up from St James' Church at 09.50am and arrives at Westcroft at 10.10.

Return journey leaves Westcroft at 11.45 arriving back in Great Horwood at 12.02.

**EVERY FRIDAY and SATURDAY - Aylesbury Market Day.** Full fare: £4.00 return, £2.80 single.

- The bus picks up from St James' Church at 09.30am and arrives in Aylesbury at 10.10.

Return journey leaves Aylesbury bus station at 12.15 and arrives back in Great Horwood at 13.00.

All these services are **FREE with a BUS PASS.**

Please note that our drivers can drop you off or pick you up anywhere on route if you have difficulties in getting to a bus stop. If you require any further information, or have special requirements, please telephone

Sue on: 01296 715786.

**Trevor Evans**

'Your Personal IT Man'

PC Support, Secure Wireless Broadband and Home  
Networks,  
Anti-Virus and Anti-Spyware Support

I can help you solve your IT problems and requirements

A Friendly and Professional Service

Call or Email me for a No-obligation Chat

☎ 01296-714413

✉ trevor@trevorevans.me.uk

## HORWOOD HOUNDS

*Pet Nanny Services*

Away for the day, off to work or  
going on holiday?

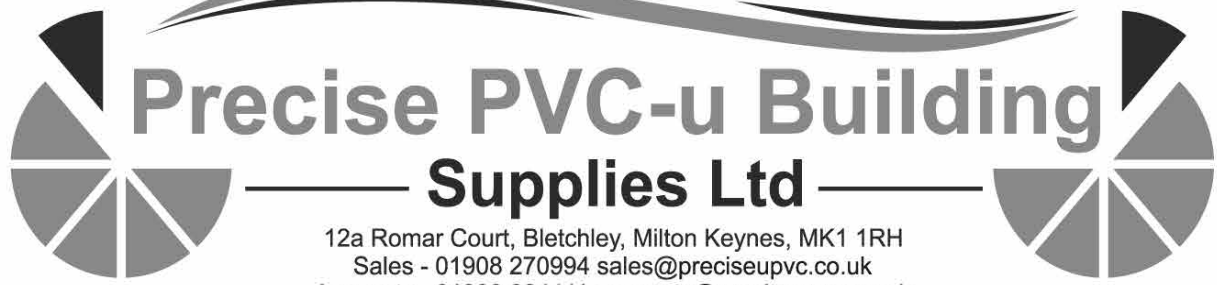
No one to look after your dog?

Horwood Hounds provides a doggie day care and boarding  
service within a home environment

Locations in Great Horwood & Singleborough  
Licensed with AVDC and fully insured  
Gundog training available

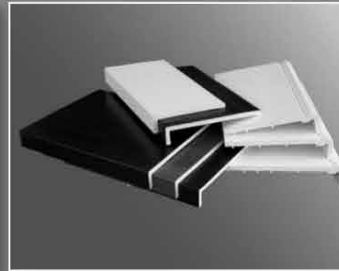
Call Edwina or Emma on 0845 634 2155 for further information





# Precise PVC-u Building Supplies Ltd

12a Romar Court, Bletchley, Milton Keynes, MK1 1RH  
Sales - 01908 270994 sales@preciseupvc.co.uk  
Accounts - 01908 824411 accounts@preciseupvc.co.uk  
www.precisebuildingplastics.com



## Building Plastics

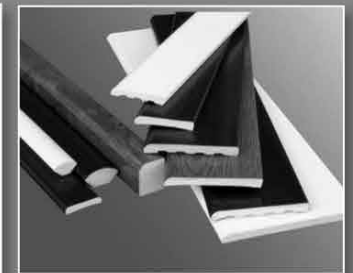
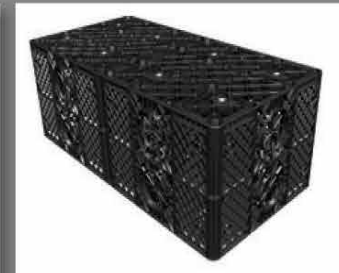
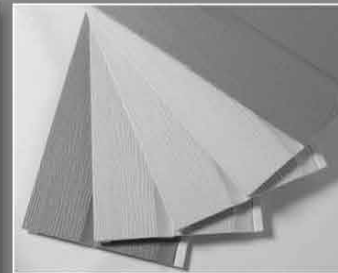
We supply the highest quality building plastics for window fitters, building contractors and the general public. We supply a wide range of building plastics to cater for all aspects of the building trade

## Roofline Products

We supply a wide range of roofline products from all the leading manufacturers. We offer all our roofline products to tradesmen and individuals at highly competitive prices

## Underground Drainage

We supply all the underground drainage products that you may require. We pride ourselves on providing the best quality underground soil and waste PVC-u products at low rates



**Guaranteed next day delivery on stock items to our local area for orders over £50**

**For SALES call  
Tony or Pete**

**Trade Counter 01908 270 994  
sales@preciseupvc.co.uk  
www.precisebuildingplastics.com**





**MARBLE ARTS**  
Natural Stone Specialists

established 1994

**Granite and Quartz  
Kitchen Worktops**

Template and installation  
in under 3 days

Tel Nigel : 01296 689301

E-mail : [info@marbleartsltd.co.uk](mailto:info@marbleartsltd.co.uk)



**JOHN COLLINS  
ELECTRICAL**

ELECTRICAL INSTALLATIONS  
ELECTRICAL APPLIANCE REPAIRS

ELECTRICAL INSTALLATIONS  
TO DOMESTIC, COMMERCIAL AND  
INDUSTRIAL PROPERTIES, ALL WORK  
CARRIED OUT TO PART P REGULATIONS

**REPAIRS TO:**

**WASHING MACHINES, ELECTRIC  
COOKERS, DISHWASHERS, TUMBLE  
DRIERS, ELECTRIC SHOWERS,  
STORAGE HEATERS AND ELECTRIC  
HEATING SYSTEMS**

**Tel: 01280 814909**

**Fax: 01280 823179**



email: [john@johncollinselectrical.co.uk](mailto:john@johncollinselectrical.co.uk)

*Have a Computer?  
NEED  
HELP?*

Help!!  
I've got  
a virus!

How  
do I do  
that?



I think  
I need  
some  
training

Why  
won't it  
work?

Contact Marius  
01296 712 561

[marius.stuart@btopenworld.com](mailto:marius.stuart@btopenworld.com)

*for advice, support and training*



**K.J. WINDOWS  
& DOORS**

UPVC WINDOWS & DOORS  
CONSERVATORIES  
FASCIA & SOFFITS  
BI-FOLDING DOORS

ALL REPAIRS, INCLUDING  
MISTED & BROKEN UNITS

ALL WORK GUARANTEED

**CALL KEITH 07539 367 200**

**Editor:** Dean White, 713828 editor@ghfocus.com

**Typing & Layout:** Dean White, Andy Gibbs.

**Printing:** Harlequin Press Ltd.

**Copy deadline:** 15th of month before publication.

**Distribution:** June Margerrison, Debbie Armitage, Ann Biggins, Judy Blundell, Di Cook, Valerie Hancock, Edwina Daymond, Duncan Hogston, Cathy Holland, Ian Lamberton, Gary Lee, Lyn Mayger, Gill Wood, Sandra Sanderson.

*Available online at: [www.bucksinfo.net/greathorwoodpc/](http://www.bucksinfo.net/greathorwoodpc/)*



## PICNIC ON THE PECE



**Sunday 19th June**

**Noon onwards**

**Bring a picnic along to the  
Recreation Ground and enjoy  
Giocoso Band**