

GREAT HORWOOD VILLAGE

SUMMER FETE & DOG SHOW

SATURDAY JULY 1ST

1PM - 4PM

GREAT HORWOOD VILLAGE GREEN, MK17 0RH

SOMETHING FUN FOR EVERYONE

**RAFFLE - TOMBOLAS - GAMES - FACE PAINTING - FOOD -
ICE CREAM TRUCK - LICENSED BAR - SWEET TREATS -
MARKET STALLS - TEAS AND COFFEES - CAKE - AND
MUCH MORE!**

**£2.50 ENTRY FOR EACH DOG IN THE DOG SHOW.
CLASSES: BEST IN SHOW, CUTEST PUPPY, GOLDEN
OLDIE AND MANY MORE TO ENTER!**

ALL PROCEEDS GO TO ST JAMES CHURCH

MICK WOOD

Heating Services Ltd

SERVICE, REPAIR & INSTALL
OIL FIRED BOILERS

We are Grant G1 & Worcester AI approved boiler installers who are able to offer longer warranties at no extra cost to you.

All installations are to Oftec regulations.

OIL FIRED COOKERS
(Service & breakdown only)

- * Prompt personal attention
- * Oil tank gauges fitted
- * Power flushes



Registered
Technician

Tel: 01296 730 670
Mobile: 07979 645 472

WINDOW CLEANING

Contact Carl:

07979395101

countryhousecleaning100
@gmail.com



Greenway Dog Walking

DAYCARE AND BOARDING WITHIN THE FAMILY HOME
GROUP OR INDIVIDUAL WALKS, POP-INS
QUALIFIED CANINE 1ST AID AND EMERGENCY CARE
CPD CANINE BODY LANGUAGE
FULLY INSURED AND LICENSED LC-201905 37236
BUCKS CC

FIND US ON FACEBOOK
PLEASE CALL LOUISE FOR ANY ENQUIRIES
07889658215
BASED IN GREAT HORWOOD



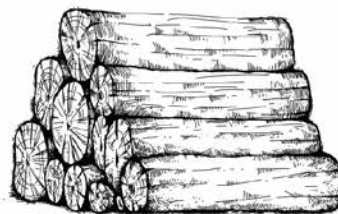
Jason's Logs

**Good quality logs delivered
in full and half loads.**

**Garden clearance,
Tree management
Pruning services**

Based at Edgecott

Tel 07961 538035



Church Times

Dr Stephen O'Connor
 rector@winslowbenefice.org.uk
 www.winslowbenefice.org.uk

Church Wardens:
 June Margerrison 714554
 Carolyn Bayliss 715814

St James' Services for July

		Sidesmen	Readers	Intercessions
2nd	11.00am Holy Communion	C Bayliss	I Lamberton	I Lamberton
9th	11.00am Come & Praise	P Moyles	S Bayliss	Clergy
16th	11.00am Creative Communion	I Lamberton	I Lamberton	J Brigden
23rd	11.00am Holy Communion	C Bayliss	S Bayliss	Clergy
30th	11.00am Come & Share	R Margerrison	R Margerrison	J Margerrison

St James' Services for August

		Sidesmen	Readers	Intercessions
6th	11.00am Holy Communion	R Margerrison	R Margerrison	J Margerrison
13th	11.00am Come & Praise	P Moyles	S Bayliss	Clergy
20th	11.00am Creative Communion	I Lamberton	I Lamberton	J Brigden
27th	11.00am Holy Communion	R Margerrison	R Margerrison	J Margerrison

Church Key: July Rita Essam - 714424

August: David Moore - 713281

FOCUS BANK ACCOUNT & DONATIONS

The Focus Bank account uses an old C&G passbook and is not online banking friendly. We have therefore been transitioning to use the PCCs Bank Account and will close the old Focus one this summer. If you wish to donate to Focus, please contact Russell Margerrison for the new Bank Account Details on 714554

WILDLIFE SITE ON THE GREEN

In a bid to provide an area for wildlife near the road over the last 3 years I've cleared deep roots and large stones as well as rubbish from the small site opposite the old Crown pub. For the first time this year I've left it to its own devices and at the end of July I will cut it back opening up the ground to receive seeds of wild flowers.

I know it looks untidy at this time of year but it provides a much needed corridor for insects.

I am now asking for help as I'm leaving the village for pastures new, please collect wildflower seeds from your gardens and walks then scatter them on the site from August 1st, I also tend the village planters so the Parish Council will need volunteers, it does make the village look like we care.

Love Where You Live

Thank you. *Jane Holland*

THANK YOU

We would like to say very big thank you to everyone who contributed and came to our plant sale on Bank Holiday. It was amazing to see so many enjoying themselves on quite a chilly day. We are pleased to say the event made £1750 towards St James Church.

Lindsay and Margaret

VILLAGE HALL

We have now received planning permission for the refurbishment of the Village Hall which is good news. We have made one grant application and are currently working on a second one both of which we will need to be confirmed before we can commence work. Hopefully we will be able to update on this in the September issue of Focus. In the meantime we are still available for bookings please feel free to contact me for the latest position on the planned building works.

Ian Lamberton, Chairman

GREAT HORWOOD CRICKET CLUB

With the cricket season under way, it's a busy time at the cricket club in Nash Road with a home game and an away game being played every Saturday by our 1st and 2nd teams we always welcome new players, visitors and families to the clubhouse to enjoy a drink on the new Patio. Darren and team open every Friday from 5.30 and Saturdays from 1.30 pm. If you are interested in playing Stuart Parker is club captain can be contacted via the clubhouse.

HomeGym Equipment available for hire



- Treadmills
- Cross Trainers
- Bikes
- Rowing Machines
- and much more



Refer a friend for a weeks **FREE HIRE**

Call 0800 043 2148

enquiries@homegymuk.com

www.homegymuk.com



Established 1990

Your Local Window and Conservatory Specialists
Products made to suit in UPVC

From Design thru' to completion ...

01296 712151

Email: NandGwindows@aol.com

FENSA Registered



THE CUTTING CORNER

Est 1998

Traditional Barber Shops

NEW LARGER SHOP NOW OPEN

WINSLOW

Opening times:
Tues, Weds & Fri 9am-6pm
Thurs 9am-7pm
Sat 8.30am-5pm

2a High Street
Winslow
Buckinghamshire
Tel: 01296 715240

BLETCHLEY

Look online for opening hours.
140 Buckingham Rd
Bletchley, Milton Keynes
Tel: 01908 375987

Appointments available
Thursdays, Fridays and Saturdays at
74 High Street, Winslow.
Book online via our website



www.cutting-corner.co.uk

FREE PARKING! Find us on Facebook



GREAT HORWOOD & SINGLEBOROUGH WI

Bees in Great Horwood

Great Horwood & Singleborough WI enjoyed a fascinating talk about the life of bees, their hierarchy, and how honey is made, by local expert bee-keeper Mike Hotard who has been managing hives since he was 16 years old. Forty years later Mike has built an enviable depth of knowledge and has been selling his lovely honey from Spring Lane for many successful years. Mike's knowledge about bees was impressive. Who knew that honeybees forage no more than a mile from their hive and

the first flower type they visit when foraging is the only type of flower they will visit while continuing to forage. It's what makes them the perfect pollinator!

Mike also spoke about what it takes to set up a hive, both from a financial perspective and the time needed to care for them and extract the honey.

The weekly WI walks have continued throughout the year and have fortunately dodged the worst of the weather we experienced. We have two, a five-mile ramble on a Monday morning and a shorter, two-mile amble on a Wednesday morning. They are very popular events and a great way to meet and chat with local, likeminded people in the village which usually culminate with a coffee at the end of the walk.

Our guest speaker in July will be giving a presentation about the Poppy Appeal and the work involved that begins by volunteers long before Remembrance Day. As well as monthly meetings, the WI in Great Horwood & Singleborough organise day trips and events throughout the year and in July we have arranged a boat trip on the River

Thames near Windsor with a cream tea. A theatre trip has been organised for later in the year and other events are planned before that. One of the joys is that transport for all events starts and ends at Great Horwood, so you don't have to worry about getting to places by yourself.

If you'd like to join our friendly group, please contact Ann Biggins annieqqmk@gmail.com / 07961 960802.

PS Come and see us at the Great Horwood fete on Saturday, July 1, where we will be running our popular tombola. Every ticket wins a prize.



Mike Hotard gave a fascinating presentation about bee-keeping.

GREAT HORWOOD SILVER BAND

It has been a while since my last Focus entry and we have been busy since then.

Our Annual Concert in March moved venue from the Buckingham Community Centre to Furze Down School in Winslow and this proved to be a great success. Thank you for everyone who attended, to Furze Down School for the use of their facilities and we are hopefully planning more events at the school, so please look out on our website for dates We followed this concert with another successful concert in another new venue Mursley Church.

Then we had a break for a few weeks until the Bank Holiday weekend for the Coronation of King Charles III. On the Sunday we played in Soulbury as part of their celebrations and were due to play for the Great Horwood celebrations on the Monday, but unfortunately the weather couldn't make up its mind what it was going to do, so the event didn't go ahead.

On the 3rd of June we had the great pleasure to be a part of the Bucks Country Show. The weather behaved itself, large crowds came to the show, and we entertained people whilst they ate their food of choice. We also planned the return of our Concert on the Green evenings, with the first one taking place on the 14th of June, with the addition of our Training Band for the very first time! The weather was warm, the Training Band were amazing, and we hope those who came enjoyed the music. Next Concert on the Green is on the 12th.

July, with the Training Band playing first and then the Main Band.

As always, we would welcome anyone interested in playing in the Band to contact us or come along on a Wednesday evening. We would love to see you no matter what your age or ability.

Future events:

1st July - Great Horwood Village Fete - Great Horwood Village Green

8th July - Mentmore Village Fete

12th July - Concert on The Green - Great Horwood Village Green - starting at 6.45pm until 8.45pm

15th July - Tingewick Summer Fete

Sometime in the autumn, we are planning to hold an event in the Village Hall in Great Horwood celebrating the history of Great Horwood Silver Band. There is a lot of hard work going on behind the scenes to gather documents, photographs and other memorabilia to put the history of the Band on display and we are asking that if anyone in the Village has any photographs or any other item that they feel could help us with this, especially from before the 1950's. If you have anything, please, could you get in contact through the details below. Thank you.

Contact details:

Email: ghsbsecretary@gmail.com

Facebook: Great Horwood Silver Band

Website: www.greathorwoodband.com



MOORESPARKS
ELECTRICAL



07708 531 227 / 01296 708 683



mooresparks@hotmail.com



www.facebook.com/mooresparkselectrical



@mooresparkselectrical

- FREE QUOTATIONS
- DOMESTIC & COMMERCIAL
- LIGHTING & POWER
- FAULT FINDING
- REWIRES
- CONSUMER UNITS
- TESTING, INSPECTION & CERTIFICATION



CALLINGHAM'S
PAINTER & DECORATORS

Quality Decorators

Over 15 years experience

- ↻ Interior and Exterior
- ↻ Hand Painted Kitchens
- ↻ Airless Spray System
- ↻ Free Quotations and Friendly Advice

Contact

01280 816699

07941 054 831

www.callinghams.com



**Dulux
TRADE**
Trade & Trusted



RB EQUESTRIAN

AWARD WINNING STORE - SINCE 1989
FOR THE HORSE & RIDER
FOR THE DOG & OWNER
FOR COUNTRY FOOTWEAR & CLOTHING



UNIT 7 LOWER RECTORY FARM, GT BRICKHILL, MK17 9FX | 01908 365335 | WWW.RBEQUESTRIAN.CO.UK

IN STORE | ONLINE | CLICK & COLLECT | TELEPHONE

THE INTELLIGENCE ZONE

The many sites of the Whaddon Web

3 of 7; The spies – Middle Weald, Nash and Calverton
In the early part of the Second World War, the British army did not (to put it charitably) fare terribly well in its head-to-head confrontations with the German army.

That concentrated Churchill's resolve to wage war, where possible, by using intelligence (in both senses of the word). The gathering of military, economic and political intelligence - spying - was very much to his taste and, indeed, very much in the British tradition. The country had been sending spies abroad for at least 500 years. By 1940, this had become the job of MI6. The information that their spies uncovered came back through the gleaming antennae of the Whaddon Web. From there it was fed into Bletchley Park; where it was added to other intelligence, much of it gleaned from cracking enemy codes. Then the resulting information was passed on – as I've described in my last excerpt – to Churchill and generals in the field.

Given the size of the landmass controlled by its enemy – most of Europe – Whaddon Hall had set up several transmitting and receiving sites for talking to their spies in the field. Each station dealt with a different area of occupied Europe. The English sites were at Middle Weald (with aerials at Calverton, operated by American engineers) and Nash. These were round-the-clock, three shift stations. Weald had eight radio operators on each shift, Nash had five. From this, it is obvious that they had quite a few customers.

MI6 only employed the best; highly talented Morse Code operators who worked at exceptional speed and accuracy. They had to. As soon as a broadcast began in occupied Europe, German monitors knew of it and began tracking it. Tracker vans raced to the broadcasting source, quickly homing in on it until they found the radio. Then they would break in and kill – or preferably capture – the man or woman sending the message. Then, for them, hell would begin; usually ending in death.

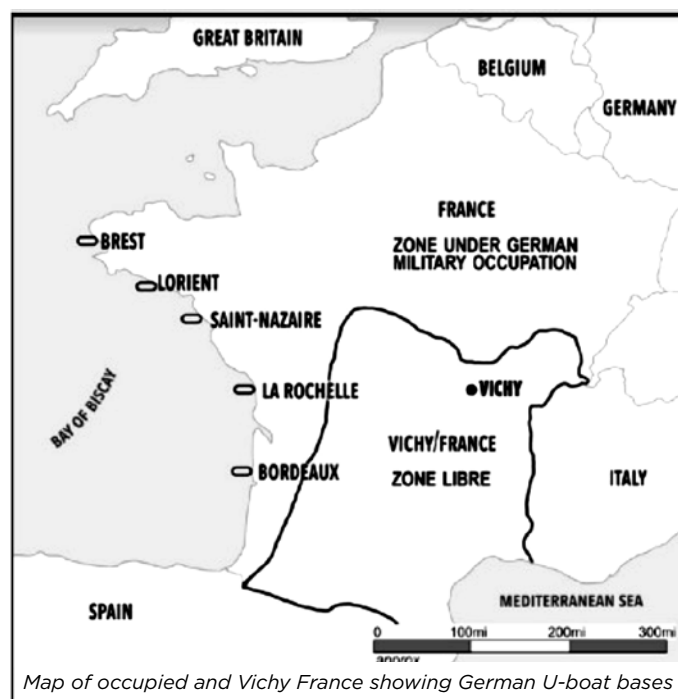
Operators (trained in England) were advised never to broadcast from the same place twice; to do so greatly increased their danger. But moving from place to place was in itself dangerous; for spot searches were routine in occupied Europe. While the sets (made in Little Horwood) were as small as MI6 could make them, they were still bulky. The lifespan of the average resistance radio operator was in months; so if the operators at Nash and Middle Weald (or the northern site in Scotland) asked for repeats, they were quite likely to be signing the death warrants of their friends behind enemy lines.

MI6's main problem, at first, was that they had too few spies, especially in France. After the sudden defeat of France and her surrender in 1940, few there thought that resistance was possible. As Britain's

fortunes changed, the resistance movements would grow to tens of thousands; but let me describe one of the very first – a lady by the name of Marie Madeleine Fourcade. I will call her Marie from now on.

When the German armies broke the Allied armies in France in 1940 (leading to the evacuation from Dunkirk), most of the population of Paris fled before them. Marie was one of them; caught in the endless columns which trekked south, sometimes machine-gunned from the sky.

After the French surrender, the Germans placed northern France and all of the French Atlantic coast under their own direct military control. Partly this was to protect that coast from British landings. Also – and more importantly at this stage – the French Atlantic coast was where the Nazis would build their submarine (U-boat) bases. From these, Germany would wage war at sea against the Royal Navy and British convoys. The rest of France was not occupied, but allowed a limited independence under a collaborationist government. This 'free' area was controlled from the town of Vichy and was therefore known as Vichy France.



Vichy was where Marie headed – there to join her boss, whose code name was 'Navarre'. Their objective was to spy on the French collaborationist government in Vichy and, if possible, raise the remaining French armies against the German invaders. To do so, the two formed the very first French resistance group – Alliance. Bear in mind that they formed *Alliance* in the first days after the French defeat – when the chances of beating the Nazis were very slim indeed; and the dangers of trying to do so were almost suicidal. The Nazis and Vichy worked hand-in-glove from the start to crush any resistance to the 'New Order'.

After her boss ('Navarre'), was captured in Rheims cathedral by the Nazis and taken to a concentration camp, Marie became the leader of *Alliance* – the most important French spy network of them all. I have

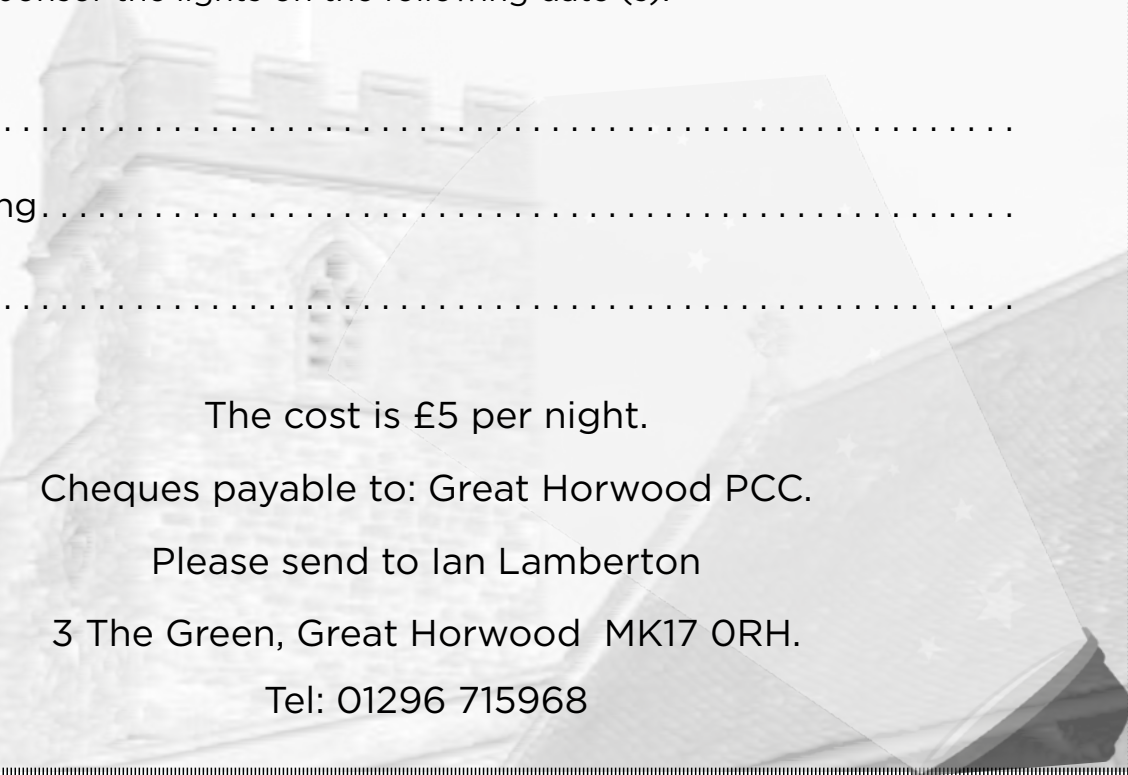
LIGHT UP THE TOWER OF ST JAMES

If you wish to sponsor the tower lights for that special occasion, please help us by using this form for your request.

I would like to sponsor the lights on the following date (s):

Date:

Commemorating.....



The cost is £5 per night.

Cheques payable to: Great Horwood PCC.

Please send to Ian Lamberton

3 The Green, Great Horwood MK17 0RH.

Tel: 01296 715968

HORWOOD CHERRIES



We are excited to announce that we will be opening for

Pick Your Own cherries again this year. Pre booking is essential as entry will only be admitted by ticket. Please visit

www.horwoodcherries.co.uk for more details and to book.



We would very much like you to bring your own punnet, bowl, pot (whatever you wish) to pick in to but we will also have punnets for sale.

We look forward to welcoming you to Horwood Cherries from late June to the end of July (dates will be confirmed on our website).

little space to tell her inspirational story here; if you want to know more about this extraordinary heroine, please read my book, *The Intelligence Zone*.

Marie considered that the 'real war' started for her when she got her first radio – from Whaddon. She and her group – like all the other spy groups – were supplied from England by MI6 and trained by them too. They were provisioned by light Lysander aircraft from RAF airfields in Northamptonshire and Suffolk.

Thesenight-time flights were extraordinary operations, carried out by crack RAF pilots, who flew their small aircraft on moonlit nights across occupied Europe to improvised landing places, where they were guided in by torches (hopefully not German torches). They delivered arms, money, radios, cigarettes, food and radio operators; and they took agents out for training (at the great sabotage schools in Hertfordshire and Scotland) and debriefing. Many pilots lost their lives.



The Westland Lysander

These operations, arranged from Whaddon, were often announced – in code of course – by the BBC. One of the code names used for an *Alliance* supply landing was 'Nash'. It was named, of course, after the radio room which was used to communicate with Marie's (and many other) resistance groups.

The information supplied by *Alliance* was of the highest order. From Marie's network, for example, came much of the information about the V1 and V2 launching sites used in the rocket attacks against London; the world's first ballistic war.

During the war, Marie was given by MI6 a 'licence to kill' (which she used). *Alliance* lost many operators, but Marie herself survived. She lived on her nerves; and it was only those thin, jangly, spiking nerves – her reactions, her intelligence – that kept her alive at all. This is drama of the highest order and unparalleled courage. Marie was one of France's greatest daughters. She stands almost in a class of her own. Her power came from an iron-hard, unbreakable decency; and a courage that would rather face almost certain torture and death than submit to evil. She was truly the flower of France.

Later in the war, Marie would be flown to England as a break from the mentally crippling work of running *Alliance*. The average time that an agent lasted was 6 months – when she was flown out she had been running *Alliance* for three and a half years. By this time she was chain-smoking sixty cigarettes a day. She was feted by SIS in London, being chauffeured in

one of Pop Gambier-Parry's sleek limousines. Marie, ever observant, commented on the:

'...long black Packards, driven by the slim blonde nymphs of the British secret services, moulded into their fetching uniforms.'

She was taken to Whaddon by Lord Sandhurst, who was in charge of SIS's agent radio operations. From there, she was taken to the Nash radio room – the other end of the communications from her agents. She described the transmitting room as:

'A tower of Babel where messages in many languages were taken by men and women operators who then passed them to the War Office. Lord Sandhurst appeared to me to be a chap one would have imagined more used to pig-sticking than managing secret transmissions ...my illusions about the English were confounded.'



*Navarre' after liberation
from a concentration
camp. Aged 33*



*Marie Madeleine
Fourcade*

Here I wish to break some of my own secret news! In my exalted role as footpath monitor for the parish of Great Horwood, I can add something that has never before being noted, to my knowledge. The Nash transmission hut was **not in Nash at all** – but in the parish of Great Horwood – opposite College Wood. It's on private land and not accessible; but it's still there. This place, where Marie Fourcarde, The Flower of France, spoke for the first time face-to-face to those British friends who had done so much for the liberation of her country, still exists. It is, as many another part of the Whaddon Web, unremarked these days. There are no blue plaques, no drums or trumpets, another site which should be celebrated is forgotten.

In my next article, I will talk about how Gambier Parry's merry men set up more sites – for black propaganda and, the most desperate of all, for those heroes with short predicted-lifespans who were tasked to fight behind the lines if the Germans had managed to invade.

My book *The Intelligence Zone* is available from Amazon, for more about it, please visit my website at www.theintelligencezone.com

Alan Biggins

PARISH PUMP



Great Horwood Parish Council

Open Space Land Little Horwood Road

The Parish Council is delighted to announce that this plot of land is now open to the public. It has long been in the planning as it was part of our Neighbourhood Plan which was made in March 2015. The developers, High Street Homes, will remain responsible for its maintenance for the next year and then the land will be transferred to the Parish Council and we can once again start to plan for the installation of the play equipment. In the meantime we plan to install two benches, two litter bins and a dog bin as soon as possible.



BELIEVE IT OR NOT



we have been told by Buckinghamshire Council that the High Street/ Winslow Road are to be resurfaced in July.

This will mean that the High Street will be closed from 10pm to 6am from 17th to 21st July and the adjacent section of Winslow Road will be closed from 10pm to 6am from 24th to 28th July.



NEXT MEETING OF THE PARISH COUNCIL

The next meeting will be held on Monday 10th July at 7.30pm in the Village Hall. There is always a public participation period when members of the public can have their say. The Notice of the meeting is advertised on the Great Horwood Facebook page, the Parish Council website and the noticeboard in the High Street. Minutes of meetings can be found on the noticeboard and the Parish Council website

e-voice.org.uk/ghpc/
Parish Clerk Great Horwood
clerk@greathorwoodpc.org.uk

FOCUS ONLINE

Did you know that there is an online edition of Focus with every copy from February 2012?

So, if you have mislaid your copy and can't find the information you need, just log onto

<https://e-voice.org.uk/ghpc/focus-magazine/>

LOCAL CONTRIBUTOR EARNS COUNTY RECOGNITION



I'm delighted to announce that our one and only, Darren (Sid) Sirett, has been short-listed by the Berks & Bucks Football Association, for Grassroots Volunteer of the Year.

This is a huge award that covers the whole of Buckinghamshire and Berkshire, hundreds of football clubs, hundreds of nominations and in Sid's case, is very much deserved.

Recognised by the U.K. Football Association, Sid is down to the last 3 and I will give an update once the result has been announced. Fingers crossed. But even if Sid doesn't win the big one, it's another point of recognition that Great Horwood FC, is a great club and continues to 'punch above it's weight', both on (more silverware this year) and off the pitch....and it's individuals like Sid, who drive it forward.

This is fantastic recognition of the work that Sid has done, over many many years, both on and off the pitch....from playing for many years, coaching, linesman, starting up new teams, groundsman (hours of grass cutting), club secretary and supporting the social side of the club in a big way.

Big respect to Darren (Sid) and a huge thank you, for all that you do, from all of us in the village and local football community.

NOOK PARK

Our fears about flooding have been realised!

We wrote recently regarding the culvert and ditch problem on Nook Park.

As you may remember Monday 12th June, we had a pretty nasty thunderstorm together with very heavy rain. Our fears were realised when there was a lot of standing water on the roads and the new bases.

But it doesn't end there with the amount of rain we experienced the culvert was unable to cope. The field owned by Patrick O'Brien was also flooded. The sheep were still walking in the flood water the following morning.

There has also been a blockage in the main sewer, so we had raw sewage from Willow Road coming out of the manhole cover with a fair force. All of this was going into the first part of the ditch system at the entrance to the park. It was a blocked drain according to Anglian Water. All this of course was ending up as stagnant water but not high enough to go into the culvert.

So, these are the consequences of not having a ditch where all of this would have flowed quite freely through the ditch and eventually downstream.

All on Nook Park hope you all have a wonderful summer.

Liz Phillips



Winslow Community Bus

July 2023

Aylesbury Market Bus

runs every Friday and Saturday morning.

from Winslow, through Gt Horwood, Little Horwood, Mursley and Swanbourne, arriving in Aylesbury just after 10am.

Drop off at the new Sainsbury's at Gateway and Broadfields on request.

Departing Aylesbury Bus station at 12.15pm. FREE with a bus pass, otherwise only £4.00 return.

Winslow Market Service

54abc - runs every Wednesday morning

This service picks up in the surrounding villages and then into Winslow, (Swanbourne, Mursley, Great Horwood, Whaddon, Nash and The Claydons). Pick up times vary according to village. Bus passes accepted, otherwise £3.00 return.

Buckingham Bus Service

Tuesday 4th July

Picking up in Winslow and surrounding villages. 1 hour in town then 1 hour in Tesco, or 2 hours in Tesco. Door to door service. Bus passes accepted, otherwise £4.50 return.

Westcroft Shopping

Thursday 13th and 27th July

Picking up in surrounding villages. Morrisons, Boots, Aldi, etc. Bus passes accepted, otherwise £4.50 return. Ring to book.

Asda

Monday 24th July

Bus passes are not accepted on this trip and will cost £5.00 Picking up in Winslow and surrounding villages Asda Shopping with the option to drop at Stadium MK1 for M&S, Primark, Next and more. Drop off at Matalan and Tesco on request.

Lunch at the Navigation, Stoke Bruerne
Tuesday 18th July

The pub is located in the charming old village of Stoke Bruerne, which lies on the Grand Union Canal. Afterwards a stop in the Stony Stratford Travel £5

Visit Stratford-upon-Avon
Tuesday 25th July

Do your own thing - laze by the river, shop or visit some of Shakespeare's residences. £10 travel. Please contact the WDCB Coordinator for more details.

Please contact the WDCB Coordinator for more details of any trips.

Timetables can be found online www.winslowbus.com

On notice boards outside the Town Council offices, Winslow Library or calling the WDCB coordinator

Passengers are not to travel on the bus if they or any member of their household are displaying any signs of the COVID-19 virus.

www.winslowbus.com

NEW EMAIL ADDRESS:

wdcbenquiries@btinternet.com

Tel: 07483 336440

HOLLAND ENGINEERING SERVICES



MOT TEST STATION
Motorcycle servicing & repairs
Quads & Lawnmowers
Parts and tyres
Mig/Tig Welding

Salden Crabtree Farm
Whaddon Road MURSLEY Milton Keynes MK17 0PR
Tel: 01296 728693
Mobile: 07879 427205



HARLEQUIN
P R E S S L T D

Lithographic and Digital Printing

Booklets
Brochures
Business Cards
Compliment Slips
Delivery Notes
Directories
Draw Tickets
Event Tickets
Invitations
Invoice Sets
Labels
Leaflets
Letterheads
Magazines
Note pads
Order of Service
Personal Stationary
Postcards
Posters
Programmes
and

Friendly Service, Free Advice

Tel: 01908 506722





**Shaun Guard
TV & WIFI
SERVICES**

- **Aerials** - repaired & supplied and poor reception solved
- **Satellite** - Sky Q dish upgrades, discreet dish installation
- **Internet** - blackspots cured, data cables to your TVs
- **TVs** - hung on your wall or set up and tuned
- **CCTV & Door Entry** - domestic installations

OXFORD AERIALS
www.oxfordaerials.co.uk
**Call Bicester
01869 879111**



Great Horwood
Parish Council

GREAT HORWOOD PARISH COUNCIL

Useful contact details

Members of the Parish Council:

Please note that councillors now have a dedicated Parish Council email address. This is in order to comply with new Data Protection Regulations that came into force in 2018. It is good policy to keep council emails separate from private emails.

John Gilbey Chairman 01296 711915
johnwgilbeypc@gmail.com

Caroline Cousin Vice Chairman 01296 713548
carolinecousinghpc@gmail.com

Andy Waller 07899 961315
andywallerpc@outlook.com

Jackie Goss 01296 713135
jackiegossghpc@gmail.com

Jonathan Evans 07470 298324
jjevans.ghpc@gmail.com

Clerk to the Council clerk@greathorwoodpc.org.uk

Parish Council Website www.e-voice.org.uk/ghpc/

Great Horwood Village Hall Bookings 01296 715968

Winslow and District Community Bus 07483 336440

Community Police Officers

PCSO Andy Piotrowski Tel: 101
Andrew.Piotrowski@thamesvalley.pnn.police.uk

MEN IN SHEDS

I often wonder how our feathered friends used to manage before we started making nest boxes for them? A couple of weeks ago, we completed our largest order yet with 40 numbered boxes being collected by our friends at the Greening Padbury group. The boxes will soon be installed in their Millenium Wood and will become part of their plan to increase biodiversity in the village.

We have also just delivered perhaps our strangest order to date - a set of fully functioning 'village stocks'! Before anyone gets the wrong idea, these are for the Friends of Mursley, Swanbourne and Drayton Parslow Schools to use at their summer fete. They are due for collection any day now but, in the meantime, they are proving quite an effective deterrent to any Shedder tempted to leave without sweeping-up, or who forgets to put the kettle on if they're first to arrive in the morning!

If you're concerned that the birds nesting in your neighbourhood are having to manage with trees and hedges (heaven forbid!) then we might be able to help but you will probably have to wait until the next breeding season. July is holiday time so fewer Sheddors will be around to do the 'ammering and sawing but the order book remains open and we will be here throughout the Summer - hope to see you soon.

**The Shed is open every Tuesday and Thursday
from 10:00 - 4:00. Unit 4, Station Road Ind. Estate.
www.MenInShedsWinslow.org.uk
Or for more info call Dave Saunders; 01296 714164**

WINSLOW AND DISTRICT ART SOCIETY

Meetings are held in Winslow every Thursday morning and in Padbury every Tuesday morning. Anyone over the age of 16 with an interest in visual arts is eligible to become a member subject to a small subscription. We are a friendly, helpful group and anyone interested in becoming a member can find more details on our website www.winslowart.org.uk

Demonstrations in a range of media are normally held at the Winslow Bowls Club on the last Thursday of each month. Entry is from 7.00 for a 7.30 start. These are enjoyable and informative evenings and last about two hours with a break for coffee and biscuits. Non members are welcome to attend at a cost of £5.00

Details of recent and future demonstrations are as follows:

30 March *Heather Miller. Acrylics and mixed media. Lake in a landscape*

27 April *Pauline Hazelwood. Line and wash with pencil sketching. Cartooning*

25 May *Aurora Spain. Brusho. Natural world*

29 June. *Karen Thomas. Graphite. Animals and birds*

28 September. Peter Keegan. Oil

Our next exhibition will be held at Winslow Bowls Club over 13/14 May.

For more about us please look at our website or contact Chair: Maureen Barnes 01280 815691

Secretary: John Beckerleg 01280 816932

Treasurer: Jackie Chambers 01296 713607

JAZZERCISE
 WHERE FITNESS AND FUN
Come to party



THE MORE YOU
enjoy your workout.
 THE MORE LIKELY YOU ARE TO
stick with it.



Special Offers Available to New Customers




✉ jazzercise1@hotmail.co.uk
 ☎ Call Keri on 07900 987230
 📱 @JazzerciseBucksBedsHerts


THE PLUMBER

Apprenticeship Served 1972 - 78
 City and Guild Qualified
ON CALL EVERYDAY
 Domestic and Commercial Installations,
 Maintenance and Repair Service.

- 💧 Burst/Leaking Pipes
- 💧 Blocked Sinks/Toilets
- 💧 Hot Water Tanks
- 💧 Overflows
- 💧 Showers
- 💧 Radiators and Pumps
- 💧 Garden Taps/Water Butts
- 💧 Fault Finding
- 💧 FREE WRITTEN QUOTE

Call The Plumber Anytime
07970 317843
 theplumber@email.com

1st aid for your plumbing



What's my house worth in Great Horwood?

If you want to know, get in touch with Ella Homes and Alexander & Co for your free, no obligation valuation.

We're working in partnership to cover more of your local area.

Aylesbury: 01296 710200 Bicester: 01869 324711
 Buckingham: 01280 817400 Winslow: 01296 715386

ella **A&C**
 in partnership with ALEXANDER & CO

www.ella.co.uk www.alexanderandco.co.uk

OPENING HOURS
Please check our website for up to
date opening hours
www.twignurseries.com



TWIGS NURSERIES
Windy Ridge, Thornborough, Buckingham,
MK18 2DZ
twignurseries@gmail.com

**HOT
CHOCOLATE
& SPECIALTY
COFFEE**

**LANDSCAPING
& GARDENING
SERVICES NOW
AVAILABLE**

**SUMMER
BEDDING
PLANTS**



**HOUSE PLANTS
& EXOTICS**

**PERENNIAL PLANTS
& HERBS**

POTS & ORNAMENTS

**SPECIALTY COFFEE,
TEA, ICE CREAM, HOT
CHOCOLATE, CAKE**

**FAIRTRADE GIFTS
AND ORNAMENTS**

**SHRUBS, ROSES
& TREES**



Ad hoc Drivers and set up/break down staff required!
**Are you over 25, able to drive a small
van, energetic and hard working?**

PAY from - calculated as a daily rate based on £15 per hour.

Requirements:

- * 2 x references
- * Work or education history
- * 3 types of ID
- * Clean license and 2 years driving experience necessary
- * DBS check will be required but not needed for application

Nipperbout is committed to safeguarding and promoting of welfare of children and has a culture of ongoing awareness and vigilance throughout the company.

Contact: events@nipperbout.com

RK Plumbing and Heating

- Bathroom Installation
- Central Heating Systems
- All Plumbing Work Undertaken
- Landlord Gas Safety Certificate
- Breakdown and Repairs

FOR A JOB WELL DONE

To get a free quote
Call Rick on 07720 265645
 or
 email: rick@rkplumbing.net
www.rkplumbing.net



Claydon Auctioneers

Auctioneers of:

Antiques, Collectables, Silver,
 Jewellery, Watches, Paintings & Prints,
 Furniture, Clocks, Militaria,
 Sporting Goods & Memorabilia,
 General Goods & Chattels, etc.

Free auction valuations available,
 Partial & total house clearance service,
 Insurance, probate & family
 division valuations

Auctioneers: Louise Gostelow
 Robin Ealey Jamieson

Contact: 01296 714434
info@claydonauctioneers.com
www.claydonauctioneers.com
 Claydon Auctioneers Ltd.
 The Claydon Saleroom,
 Calvert Road, Middle Claydon,
 Buckinghamshire, MK18 2EZ

Local Musical Theatre Classes

for ages
4 - 11

Be a star on stage and in life

BOOK A TRIAL CLASS TODAY AT
PWACADEMY.COM

07568 447 131 | 01296 733 258 | admin@pwacademy.com

Peplow Williams Academy
 of Theatre and Performing Arts





Buckingham Wills & Probate
Part of Bicester Wills Ltd

- Standard Single Will - **£199**
- Standard Mirror Wills - **£299**
- Lasting Power of Attorney
Property & Financial or
Health & Welfare - **£325 each**
Both types for one person - **£500**
Both types for a couple - **£950**
- Probate Assistance from - **£1,200**
- Prepaid Funerals Plans - from **£1,700**

*Home visits
no extra
charge!!*

**Gail and Lesley offer a friendly
estate planning service**



Come in and see us
The Garage, Castle Street,
Buckingham, MK18 1BS
or phone 01280 811201



lesley@buckinghamwillsandprobate.co.uk 01280 811201
www.buckinghamwillsandprobate.co.uk

Chartered Accountants and Business Advisers

AJR & Co Ltd specialises in small to medium sized businesses and, in particular, in start-ups with an excellent package to assist the new business.

AJR & Co Ltd offers a complete accountancy service:

Bookkeeping services	Accounts preparation
Corporation Tax	VAT Returns & services
PAYE Returns & services	Company formation
Company secretarial work	Tax planning advice
Self-Assessment	Tax Return preparation

**The Barn, 11a Queen Catherine Road,
Steeple Claydon, Bucks MK18 2PZ**

Please call in to see us or call for a free consultation

Tel: 01296 738668

Email: office@ajrandco.co.uk



ExemplaCare

Exceptional carers & nurses at home

We offer the very best personalised care and support in the comfort
of your own home.

We serve Buckingham, Winslow, Brackley & the surrounding villages.

■ Personal Care

■ Nursing Care

■ Home Help

■ Complex Care

☎ 01280 821860

✉ contact@exemplacare.co.uk

🌐 www.exemplacare.co.uk

Serving our local community & employing local staff.

D. Johnston

Heating & Plumbing Solutions

Boiler installations / servicing / repairs

Oftec registered oil boiler specialist

Gas safe registered

Landlord Safety Certificate

Full Central heating Installations

Under Floor Heating

General Plumbing

Power flushing

Pressurised hot water systems



www.d.johnstonhps.co.uk

Email: djohnstonhps@outlook.com

Tel: 01296 655169 / Mob: 07702 036217

Precise PVC-u Building Supplies Ltd

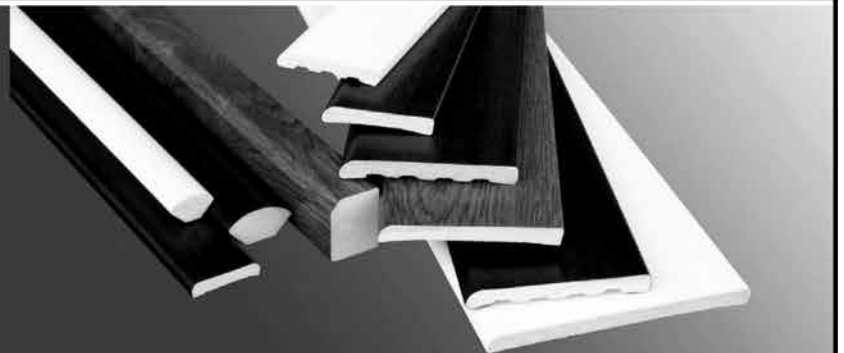
Suppliers of Building Plastics

Precise PVC-u Building Supplies Ltd is a family run company based in Bletchley, Milton Keynes. We are established since 2003 and pride ourselves on our friendly and informed customer service.



Our experience in the trade ensures that we supply the best quality PVC products to all our customers. We guarantee next day delivery on all of our stocked items. We are a supplier of a wide range of plastic building products. Many of our customers use our services like a manufacturers and suppliers as we can order any product that is currently not in stock.

We are suppliers for window fitters, builders, plumbers and DIY enthusiasts. Whether you're an individual who likes home improvements or a professional window fitter we are able to supply you with all the necessary materials. Come down to the industrial estate and see how we can save you and your company money on all your PVC supplies.



www.precisebuildingplastics.com

T: 01908 270 994 E: sales@preciseupvc.co.uk



Editor:	Russell Margerrison	editor@ghfocus.com	Distribution:	June Margerrison, Ann Biggins, Edwina Daymond, Louise Edwards, John Gilbey, Valerie Hancock, Duncan Hogston, Cathy Holland, Helen Jackman, Ian Lamberton, Gary Lee, Kathy Thompson, Sylvia Whitehall, Gill Wood.
Typing & Layout:	Russell Margerrison, Andy Gibbs.			
Printing:	Harlequin Press Ltd.			
Copy deadline:	15th of month before publication.			

Available online at: www.e-voice.org.uk/ghpc

College Wood



College Wood is a remnant of the mediæval forest which once covered a large part of north Buckinghamshire. It is now managed by the Woodland Trust, and is open to the public. There is a waymarked route around the wood, together with broad rides and other, narrower, paths. A visit in the spring will allow you to see the bluebells!

If you wish to drive College Wood you should go north from the Village to the A421, turn right at the roundabout, and then take the first left (part of a staggered crossroad). There is a small car park at the entrance to the wood.

It is possible to walk from the Village to College Wood. One option is to walk along minor roads, crossing the A421 at the staggered crossroad. Another is to take a footpath walk along the North Bucks Way (starting part way up Nash Road) until you are almost at Nash, and then to turn right along the minor roads to reach the wood from the opposite direction.

