

JULY  
2021



## School Fundraising

### Are you having a clear out ?

### Help the school raise money for Project 'Seeds of Hope'-Garden of Tranquility

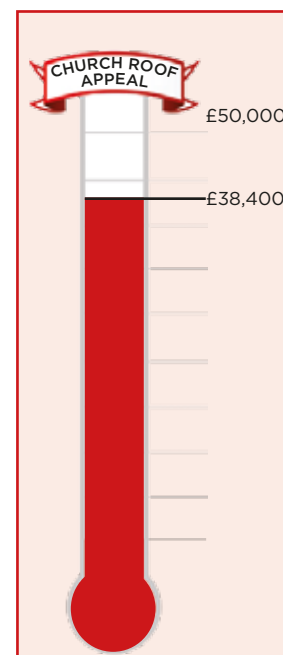
Working with a local company, Great Horwood School is collecting unwanted, good quality items. The items are weighed and a donation is made to the school based on weight.

Your unwanted clothing and textile items will not only raise money for the school but will be re-used saving on landfill waste. We collect all types of clothing, footwear and accessories along with household textiles.



- \* Curtains
- \* Towels
- \* Bed linen
- \* Curtains
- \* Soft Toys (donated to orphanages abroad)
- \* Bras for Bra Bank
- \* Clothing
- \* Handbags & Belts
- \* Skirts
- \* Footwear

Drop off at the school anytime between 7.30am - 4.00pm - Term time  
If you have any questions or would like to drop off clothing donations.  
Please contact Deborah in the school office on 01296-712622 or email:  
[office@greathorwoodschool.org](mailto:office@greathorwoodschool.org)



Advertising and copy deadline for next issue : 15<sup>th</sup> July 2021.  
To advertise or submit articles email: [editor@ghfocus.com](mailto:editor@ghfocus.com)

# HomeGym Equipment available for hire



- Treadmills
- Cross Trainers
- Bikes
- Rowing Machines
- and much more



Refer a friend for a weeks **FREE HIRE**

## Call 0800 043 2148

[enquiries@homegymuk.com](mailto:enquiries@homegymuk.com)

[www.homegymuk.com](http://www.homegymuk.com)



5 Star rating \*\*\*\*\*

## Greenway Dog Walking

DAYCARE AND BOARDING WITHIN THE FAMILY HOME  
 GROUP OR INDIVIDUAL WALKS, POP-INS  
 QUALIFIED CANINE 1ST AID AND EMERGENCY CARE  
 CPD CANINE BODY LANGUAGE  
 FULLY INSURED AND LICENSED LC-201905 37236  
 BUCKS CC

FIND US ON FACEBOOK  
 PLEASE CALL LOUISE FOR ANY ENQUIRIES  
 07889658215  
 BASED IN GREAT HORWOOD



# ExemplaCare

Exceptional carers & nurses at home



We offer the very best personalised care and support in the comfort of your own home.

We serve Buckingham, Winslow, Brackley & the surrounding villages.

- Personal Care
- Nursing Care

- Home Help
- Complex Care

📞 01280 821860

✉ [contact@exemplacare.co.uk](mailto:contact@exemplacare.co.uk)

🌐 [www.exemplacare.co.uk](http://www.exemplacare.co.uk)

Serving our local community & employing local staff.

# Church Times

Rev Andrew Lightbown  
e-mail [alightbown@hotmail.co.uk](mailto:alightbown@hotmail.co.uk) phone 01296 712564  
[www.winslowbenefice.org.uk](http://www.winslowbenefice.org.uk)

All our services are at 11.00 on Sundays. We will be complying with government guidelines on social distancing, hand sanitizing, maintaining records of attendance and wearing face masks during the service but we have included singing a hymn socially distanced outside at the end of the service subject to the weather conditions. All are Welcome.  
*David Brazier & June Margerrison, Churchwardens*

## PLANT SALE

We would like to say a very BIG thank you to everyone who supported the plant sale and everyone who came and purchased the plants. We were very pleased to have made £1786.00 for the Church Roof Appeal.

Could we also please ask that if anyone has flower pots they are throwing away could they please come our way. We are always grateful to receive small to medium pots. Just leave them at 8 High Street.

Thank you all once again!

*Margaret and Lindsay*

## GREAT HORWOOD VILLAGE HALL

Following the recent government announcement, we are now not able to fully open the Hall until July 19th although of course we are still able to take bookings for socially distanced groups.

The Post Office is still visiting every Wednesday from 9.30 until 11.00

*Ian Lamberton*

01296 715968

## GREAT HORWOOD AND SINGLEBOROUGH WI

At our June meeting John Pearson gave a talk entitled "Blessed are the Cheese makers"

It was a very entertaining and informing talk. He has had a long career in the food industry primarily working for M&S. We learnt that the Brits are the largest consumers of fresh milk in Europe and we have a wider range of cheese than the French! He had some very amusing anecdotes.

At last we are planning to hold some meetings as they used to be!

For our meeting in July on Tuesday 13th we are holding a social event from 5pm until 7pm on Horwode Pece, Spring Lane. It will be a drop-in session and anyone is welcome to come along. Just bring a picnic and a chair. Weather permitting of course!

We even have a day out planned at Waddesdon Manor on 6th July to celebrate the Bucks Federation 100+1 centenary.

It will be lovely to get members together again. Zoom has been a great tool but there is nothing like meeting together. We are planning to have our first meeting in the village hall in September - fingers crossed!

If you would like to come along to any of our meetings please contact Angela Mayne.

[angela.mayne@googlemail.com](mailto:angela.mayne@googlemail.com) or 715400

## CHURCH LIGHTING

The Church was lit on the 4th May to remember Dennis Hopkins and on the 25th and 26th June to remember Christine Bolton who passed away 10 years ago.

*Ian Lamberton*

## 'A PLEA TO PIZZA LOVERS AT THE REC'

It is great to see the Rec being so well used during these glorious days. May I make the request that all those who are enjoying the sun with a slice or two of pizza, to PLEASE take your used boxes and empty Litre bottles of fizz home with you. (Parents of teenagers would you please mention this to your kids too). I am currently going down daily and picking up, on average, 3 boxes each day, my wheelie bin is overflowing with them ~ the bin men must think I am extremely gluttonous! The pizza box that had been filled with our new rubber chippings and then wedged hard into the bin was not the best use of one either. Not only did I have to waste my time prising it out of the bin, the rubber chippings are expensive and have been a long hard process to get in place, so a very disappointing sight to be faced with.

Long may the sun shine.

*Cathy Holland*

*Rec Committee*

## WINSLOW AND DISTRICT ART SOCIETY

As Lockdown continues to ease members of Winslow and District Art Society have now been able to restart our usual weekly face to face painting groups. These are held in Winslow every Thursday morning and Padbury every Tuesday morning. Anyone over age 16 with an interest in visual arts is eligible to become a member subject to a small subscription. We are a friendly and helpful group and anyone who is interested in becoming a member can find more details on our website [www.winslowart.org.uk](http://www.winslowart.org.uk)

Our final monthly Zoom demonstration will be held on Thursday 24 June and will involve Chris Forsey using Acrylic. It is intended that future demonstrations will restart in the Winslow Bowls Club from Thursday 30 September and details will be provided nearer the time. These are enjoyable and informative evenings and last about two hours with a break for tea and biscuits. Non members are welcome to attend subject to a small entry fee.

Bucks Art Week starts from 12 June and is on until 27 June and details can be found on [www.bucksartweek.org.uk](http://www.bucksartweek.org.uk). Paintings by WADAS member Cheryl Wilyman can be viewed at Unit 5, Manor Farm, Whitchurch, HP22 4RB.

Plans continue for our November exhibition which will be staged in our local Public Hall. This is held over a weekend and gives the opportunity for the public to look at and purchase work done by our members. Admission is free.

If you are interested in more information please look at our website [www.winslowart.org.uk](http://www.winslowart.org.uk) or contact:

Chair: Maureen Barnes 01280 815691

Secretary: John Beckerleg 01280 816932

Treasurer: Jackie Chambers 01296 713607

**To advertise or submit articles email:  
[editor@ghfocus.com](mailto:editor@ghfocus.com) BY 15th MONTH**



WHERE FITNESS AND FUN

*Come to Party!*



**In Person Classes**

**Botolph Claydon**

Online classes also available

Full Schedule and Information

[www.jazzercisebbh.com](http://www.jazzercisebbh.com)

To book your spot, contact Keri

07900 987230 [iazzercise1@hotmail.co.uk](mailto:iazzercise1@hotmail.co.uk)



**Do more.  
Learn more.  
Be more.**

Put your skills to use, learn new ones, and contribute to an amazing life-experience for you and your local community.

Volunteering is easier than you think. With full support and training, you can volunteer on a flexible basis.

Put your skills to use, learn new ones, and contribute to an amazing life-experience for you and your local community.

Volunteering is easier than you think. With full support and training, you can volunteer on a flexible basis.

[scouts.org.uk/join](http://scouts.org.uk/join)

**#SkillsForLife**

Copyright: 2018 The Scout Association Registered Charity numbers 306101/SC038437



**Scouts**

1st Great Horwood Scout Group

*Local*  
**Musical Theatre**  
*Classes*

for ages  
**4 - 11**



*Be a star on stage and in life*

BOOK A TRIAL CLASS TODAY AT

**PWACADEMY.COM**

07568 447 131 | 01296 733 258 | [admin@pwacademy.com](mailto:admin@pwacademy.com)

**Peplow Williams Academy**  
of Theatre and Performing Arts

## GARDENING TIMES

At this time of year, the country is gripped by a fever. Even the most sedentary of us inevitably ends up thinking about the postcode SW19 and Wimbledon and tennis. This period usually ends in some sort of heartbreak to us Brits, but there is another attraction during the Wimbledon fortnight, Strawberries.

Strawbs are seen as the most English of fruits, seasonal, fresh, growing them is something that we can do well, we are world class at it. It is one of life's pleasures to eat one, freshly picked, warmed by the sun and as sweet as sweet can be but appearances can be deceptive. They are also incredibly good for you, lowering cholesterol, high in fibre.....What's not to love?

They are not however, as English as they would seem. Although we do have native wild strawberries in this country the punnets that we see regularly in the shops have their origins from further afield. Commercial strawberries are a hybrid of 2 different species that originate in North America but we shouldn't let that stop us. You can make them your very own and are the easiest plants to grow in your garden or in a pot or planter.

The ground they are in does need to be well prepared, dig out all the weeds, especially those that are perennial such as dandelions and docks. There needs to be as much organic matter added to the soil as possible, the more you can add, the better the quality and quantity from the plants. Don't put them in in too deep, the crown has to be sitting on the surface, to prevent them rotting, but you don't want them sitting proud either. They need to be planted 45cm (18 inches) apart, don't worry their runners will fill in the gaps in no time.

Strawberries that are looked after well just keep on giving and giving, repaying their investment many times over, and if the abundance of fruit gets too much you won't have any problem finding any takers if you offer them out to others, they'll go quicker than one of Andy Murray's serves.

Tradition has it that they are supposed to be at their tastiest around St John the Baptist Day, (24th June), their gorgeous colour a reminder of Christ's Blood with their 3 lobed leaf seen as a sign of the Holy Trinity. Packed with flavour and good for you. Go on. Tuck in

### Jobs to do in the garden in June

- Dote on your Dahlias – Make sure that your plants are well watered and supported, they will thank you for it by flowering on and on.
- Deadhead your old flowers before they go to seed. This encourages an abundance of bloom going into the late summer.
- Try taking cuttings of your favourite perennials. Remove and flowers or flower buds from the cutting, some will grow in something as simple as a glass of water (hydrangeas are particularly good at this).
- Prune back spring and early summer bushes such as *Ribes* (Flowering currant), *Syringa* (Lilac), *Philadelphus* (Mock Orange), *Deutzia*. If you do this now, they can produce enough growth to flower on next year, don't leave it too late though.

- Remove excess fruit from any apples, pears or plum trees. If they are overloaded, remove some of the excess. That way the fruit that you do get will be big and juicy, it will also help with supplying next year's crop.

Rev'd Mark

## GREAT HORWOOD CRICKET CLUB UPDATE

After a huge amount of pre-season work on and around the ground, the playing season got underway in the first week of May. We were delighted to welcome a number of new players to the club in Tom North, Tom Davies, Mudassar Ansari, James Henderson, Maharuj Islam and Nick Hedges.

The ground looked immaculate as the 1st XI got their season underway with a home fixture with fellow promotes Soulbury Village. Excellent batting by Sam Willett

(70) and Glyn Davies (44no) saw us reach 225 for 4 off our 40 overs. In reply, Soulbury were never really in the hunt as Robby Taylor, Tom North, Olly Prendergast and Simon Ridgway took 2 wickets apiece to dismiss the visitors for 155, leaving Horwood victors by 70 runs.

The 2nd XI lost their first game at Lidlington by 32 runs; chasing 176 they were all out for 144. Tom Amies excelled with the ball for Horwood (5 for 43), whilst Terry Cronin top scored with 27.

The following week was a complete washout, with both games cancelled.

The following weekend saw the 1st XI continue their winning ways with a comfortable victory against Westcroft. Having restricted Westcroft to 119, thanks to good bowling from Dale Armitage and Tom North, Stuart Parker (39) and Glyn Davies (21) eased us to a 6 wicket win.

Sadly, the 2nd team fixture was cancelled, as the wet weather continued to dominate.

This poor weather also caused the following weekends matches to both be cancelled, but the last weekend of the month saw the 1st XI defeat last season's champions, Elstow, by 49 runs. Horwood made a sticky start but recovered due to fine innings from Mudassar Ansari (65), Glyn Davies (35) and Simon Ridgway (24 no), to set a challenging total of 189 for 8. Ridgway was in no mood to let his hard work go to waste as he bowled an excellent spell (4 for 21) as Elstow were restricted to 140 ao. A result that saw the 1sts soar to second place in the table, just 1 point behind Olney Town.

The seconds lost to a strong St Andrews side by 101 runs; the highlights for Horwood were Tom Davis taking 4 for 39 and Deran Taylor hitting 42 runs.

Looking forward, as well as having a full list of League fixtures up to the end of August, we are already making plans for the Annual Memorial match versus Thornborough, where we honour and remember and honour 2 local cricket legends, Bob Ridgway and Mick Moore. The game will take place at Great Horwood this year on Sunday 11th July, and all are welcome to come along.

We are also in the process of arranging a 6-a-side competition to take place at Great Horwood on

# Claydon Auctioneers

Auctioneers of:

Antiques, Collectables, Silver, Jewellery, Watches, Paintings & Prints, Furniture, Clocks, Militaria, Sporting Goods & Memorabilia, General Goods & Chattels, etc.

Free auction valuations available, Partial & total house clearance service, Insurance, probate & family division valuations

Auctioneer: Louise Gostelow

Contact:

01296 714434

[info@claydonauctioneers.com](mailto:info@claydonauctioneers.com)

[www.claydonauctioneers.com](http://www.claydonauctioneers.com)

Claydon Auctioneers Ltd.  
The Claydon Saleroom,  
Calvert Road, Middle Claydon,  
Buckinghamshire, MK18 2EZ



small tree work & hedge trimming services

**07342 181713**

[arthursgardenservices@gmail.com](mailto:arthursgardenservices@gmail.com)

Qualified arborist  
Public Liability Insured

# What's my house worth in Great Horwood?

If you want to know, get in touch with Ella Homes and Alexander & Co for your free, no obligation valuation.

We're working in partnership to cover more of your local area.

Aylesbury: 01296 710200

Bicester: 01869 324711

Buckingham: 01280 817400

Winslow: 01296 715386

**ella**

in partnership with

[www.ella.co.uk](http://www.ella.co.uk)



ALEXANDER & CO

[www.alexanderandco.co.uk](http://www.alexanderandco.co.uk)

Sunday 8th August. Six local sides are being invited to take part in what promises to be an exciting day.

With the COVID restrictions being eased, we are pleased to announce that the club bar is open again on matchdays. The required restrictions are all in place and members and guests are welcome to come along and enjoy some excellent cricket, whilst also enjoying a relaxing drink.

The club has also ventured into a Milton Keynes based midweek league. Called the Simbah Cup, this limited over competition promises some exciting matches, all of which are played within MK. Each side is provided with coloured kit (we play in green) and uses a white ball. First game took place on 3rd June, where we narrowly lost to a team from Luton.

We will post fixtures on Facebook to let you know when and where these matches are taking place. Remember, there is a cricket match on the ground every Saturday and we always offer a warm welcome to everybody who wants to come along and watch some good quality cricket.

**Winslow & District Community Bus  
need Volunteer Drivers!**

If you are aged between 30 and 70 years of age, have a D1 on your licence, and have some spare time, please consider becoming a driver for your local Community Bus

We offer certificated training to MIDAS standard, and pay out-of-pocket expenses.

Please call or email for more info, 01296 715786 or wdcbenquiries@btconnect.com

**The Lavender Workout: for mind and body.**

Stretch, strengthen, tone and relax with exercises derived from Fitness Yoga, Tai Chi and Pilates.

Returning and new exercisers  
of all ages and fitness levels welcome.

Great Horwood Village Hall  
Thursdays 10.00 am - 11.00 am

Re-starting 5/8/21  
4 weeks through August £34

Pre booking essential. Limited spaces.  
Following all current Covid-19 guidelines.  
Please contact Sandra Pratt AFAA, AFOGB, Fitpro.

07775 428594  
Email: sandrapratt45@yahoo.co.uk



**Winslow Community Bus**

www.winslowbus.com  
wdcbenquiries@btconnect.com  
Tel: 01296 715786

**Scheduled Service Update**

We are now running our Wednesday Winslow Market Service, and Friday & Saturday Aylesbury Market Service.

Due to government restrictions, and the need to keep yourselves and our drivers safe, we have put in place strict guidelines for our drivers and passengers.

To comply with current 1 metre + social distancing, we have removed some seats as we are only able to transport 6 passengers at any one time. It will also be impossible to use the tail lift while maintaining a socially safe distance, so you will need to be able to board the bus unaided using the main door.

Please contact our Coordinator for more details.

**SCHEDULED WEEKLY SHOPPING ROUTES:**

**Every Friday & Saturday morning - Aylesbury Market Bus**

|                                |         |        |
|--------------------------------|---------|--------|
| Stops at:                      | Outward | return |
| *Spring Lane, Great Horwood    | 09.25   | 13.05  |
| St James Church, Great Horwood | 09.30   | 13.00  |

\*Stops on request

**Every Wednesday morning - Winslow Market Service**

|                                |         |        |
|--------------------------------|---------|--------|
| Stops at:                      | Outward | return |
| St James Church, Great Horwood | 10.10   | 11.51  |

Call for more information on times, or visit our website!  
www.winslowbus.com

**Is your Bus Pass still valid?**

For information on how to apply and renew visit  
<https://www.buckscc.gov.uk/services/transport-and-roads/buses-and-trains/apply-for-or-renew-an-older-persons-bus-pass>  
or call the automated telephone service on 01296 873 011.

**HOLLAND ENGINEERING  
SERVICES**



**MOT TEST STATION**  
Motorcycle servicing & repairs  
Quads & Lawnmowers  
Parts and tyres  
Mig/Tig Welding

Salden Crabtree Farm  
Whaddon Road MURSLEY Milton Keynes MK17 0PR  
Tel: 01296 728693  
Mobile: 07879 427205

# RECIPE TIME *from Sara Walsh*

The recipe below has been recommended by Vikki from Horwood cherries, via her friend "Alice through the looking glass" supper club, based in Thornborough.

## Bruschetta with Goats Cheese and Thyme Roasted Cherries

This is a really quick and simple recipe for a snack or starter. You could also use these savoury cherries as a delicious accompaniment to pork or chicken.

- 150 g stoned cherries halved
- ½ tbs balsamic vinegar
- 1 tsp thyme leaves
- ½ tbs oil (olive/rice bran/vegetable oil or similar light tasting)
- salt and pepper
- Baguette
- Soft goats cheese
- Balsamic glaze (optional)
- Heat oven to 200°C (fan)

### Method

Put the cherries, vinegar, thyme and oil in a bowl and mix together.

Line a small baking dish with a baking sheet or grease proof paper and pour cherry mix onto it.

Slice baguette into rounds roughly 1 cm thick, place on a rack, put in the oven and then put cherries in above them.

Bake for 8 minutes, remove bread when it is golden. The cherries may need a few more minutes.

Spread goats cheese onto the bruschetta and top with some of the cherries, drizzle over the balsamic glaze if using and a sprinkling of Maldon sea salt flakes.

And here is another suggestion:

### Cherry ice cream

- cherries 500g
- golden caster sugar 150g
- fresh vanilla custard 500g
- double cream 300g, softly whipped
- vanilla extract 1tsp

### Method

#### • STEP 1

Pour the cream and custard mix into an ice-cream maker and churn (or freeze in a plastic container with a lid ) until softly frozen – you'll need to be able to stir the cherries through.

#### • STEP 2

Warm the cherries with the sugar until it just dissolves. Spoon the ice-cream into a large container and stir through the cherries to make a ripple effect. Freeze until needed.

Delicious with a warm chocolate brownie.

Sara



Within our Early Years Provision, here at Great Horwood School, we aim to spark curiosity, enthusiasm, and independence where children can play, learn and grow together in an open-ended environment that promotes awe and wonder, enabling them to flourish.

We have recently adapted our Early Years provision, and have begun to embed 'The Curiosity Approach' to enable a calm, nurturing environment focused around natural materials and loose parts. This approach will ensure curiosity and enthusiasm is sparked to support imaginative, curious play with open-ended resources.



Spaces now available for children aged 3-5 every day from 8.45am until 3.15pm and wrap around care from 7:40-8:35 and 3:15-6:00. We accept funding for those eligible for both 15 and 30 hours.

Please contact the office if you would like a tour of our setting or to speak to one of the EYFS team.

office@greathorwoodschool.org





## GREAT HORWOOD PARISH COUNCIL

### Useful contact details

**Members of the Parish Council :**

Please note that councillors now have a dedicated Parish Council email address. This is in order to comply with new Data Protection Regulations that came into force in 2018. It is good policy to keep council emails separate from private emails.

|                                      |              |
|--------------------------------------|--------------|
| <b>John Gilbey</b> Chairman          | 01296 711915 |
| johnwgilbey@gmail.com                |              |
| <b>Caroline Cousin</b> Vice Chairman | 01296 713548 |
| carolinecousinghpc@gmail.com         |              |
| <b>Robert Davies</b>                 | 01296 712763 |
| robert7_daviesghpc@yahoo.com         | 07967 868881 |
| <b>Dave Taylor</b>                   | 07980 546484 |
| daveghpc@btinternet.com              |              |
| <b>Angela Mayne</b>                  | 01296 715400 |
| angelamayneghpc@outlook.com          |              |
| <b>Jackie Goss</b>                   | 01296 713135 |
| jackiegossghpc@gmail.com             |              |
| <b>Gavin Laird</b>                   | 01296 712798 |
| Gavinlaird78ghpc@gmail.com           |              |

**Clerk to the Council**

Mrs Sue Brazier  
01296 714712 clerk@greathorwoodpc.org.uk

**Parish Council Website** www.e-voice.org.uk/ghpc/  
**Great Horwood Village Hall Bookings** 01296 715968  
**Doctors Car Service** 07704 140110  
**Winslow and District Community Bus** 01296 715786  
**Aylesbury Vale Dial-a-Ride** 01296 330088  
**Community Police Officers**  
 PCSO Andy Piotrowski Tel: 101  
 WinslowandDistrictNHPT@thamesvalley.pnn.police.uk





Great Horwood  
Parish Council



The Queen's Green Canopy is a unique tree planting initiative created to mark Her Majesty's Platinum Jubilee in 2022 which invites people from across the United Kingdom to 'Plant a tree for the Jubilee'. Everyone from individuals, Scouts and Girlguiding groups, villages, schools and other organisations will be encouraged to play their part to enhance our environment by planting trees from October, when the tree planting season begins, through to the end of the Jubilee year in 2022.

For more details and to get involved please log onto [www.queensgreencanopy.org](http://www.queensgreencanopy.org) to create a legacy in honour of the Queen's leadership of the Nation, which will benefit future generations.

### INFORMATION SHARING GROUP



This is a good way of communicating useful information to villagers. If you would like to receive information first hand, such as PC Agendas, Minutes, Thames Valley Police info, roadworks updates and other ad hoc information, please contact me with your email address and I will add you to my list.

### SPEED INDICATOR DEVICE



We are all aware of speeding traffic entering our village. The Parish Council do have a handheld device that will record speeding cars but it does need a team of volunteers to man it. Due to Government guidelines over the past year, we were not permitted to use it, so now is the perfect time to be trained up and be a visible presence. A short training session will be required, but nothing onerous. Please contact me if you would be interested in getting involved.

### SOLAR FARM

Planning application No. 20/02582/APP Construction of a solar farm together with all associated works, equipment and necessary infrastructure on land to the east of Fox Covert, Great Horwood was approved on 1st June. Installation is not expected to start this year.

### POT HOLES



We are all aware of the numerous pot holes in the village that can be a major hazard, as many are unavoidable. The Parish Council are continually bringing the state

of the roads in the Parish to the attention of our Buckinghamshire Councillors and to our Bucks Local Area Technician. Please continue to report any issues to [www.fixmystreet.com](http://www.fixmystreet.com) and if you leave your name,

## PARISH PUMP

### PLANT A TREE FOR THE JUBILEE

you should receive a response.

### FUNDS FOR LOCAL CAUSES

As in previous years, Great Horwood Parish Council will once again be donating up to £3000 to local causes. If you would like your group to be considered, you need to start thinking about your bid. Forms can be obtained from the Parish Clerk, contact details below. Applicants must be from organisations associated with the village. Winning bids will be announced at the December Parish Council meeting. The closing date for applications is 31st October 2021.



### WELCOME TO GREAT HORWOOD

A big welcome to our new residents! There have been many people moving in and out recently. We hope you are settling in and enjoying our lovely village community. Would you like to receive a Welcome Pack? This has recently been updated and includes information on village organisations, the School, Pub, Church and the local area. Please contact John Gilbey by email on [johnwgilbeypc@gmail.com](mailto:johnwgilbeypc@gmail.com)



The date of the next meeting is **Monday 12th July at 7.30pm** in the Village Hall. Due to the easing of restrictions, Parish Council meetings are once again being held in the Village Hall. If you would like to attend meetings, please could you let me know in advance as space is limited. Minutes of meetings can be found on the noticeboard and the Parish Council website [e-voice.org.uk/ghpc/](http://e-voice.org.uk/ghpc/)

Sue Brazier, Parish Clerk Great Horwood  
[clerk@greathorwoodpc.org.uk](mailto:clerk@greathorwoodpc.org.uk)

### YOUR LOCAL SCOUTING & GUIDING NEED YOU

Are you looking to add to your CV?  
Want to be part of village life?  
Help Young People develop Skills for Life?

Then why not look at volunteering with either the Scouting or Guiding Groups in Great Horwood.

Both are in need of Adults (18+) to help in all sections:

As numbers of Young People have increased

If you would like to find out more information, then contact

Yvonne Taylor MInstLM - Group Scout Leader  
1st Great Horwood Scout Group  
[adcbandc@uwclub.net](mailto:adcbandc@uwclub.net) or 07931 585926



Established 1990

Your Local Window and Conservatory Specialists Products made to suit in UPVC

From Design thru' to completion ...

01296 712151

Email: NandGwindows@aol.com

FENSA Registered



MOORESPARKS ELECTRICAL



07708 531 227 / 01296 708 683



mooresparks@hotmail.com



www.facebook.com/mooresparkselectrical



@mooresparkselectrical

- FREE QUOTATIONS
• DOMESTIC & COMMERCIAL
• LIGHTING & POWER
• FAULT FINDING
• REWIRES
• CONSUMER UNITS
• TESTING, INSPECTION & CERTIFICATION



OPENING HOURS Please check our website for up to date opening hours



TWIGS NURSERIES Windy Ridge, Thornborough, Buckingham, MK18 2DZ twignurseries@gmail.com

INDOOR PLANTS AND POTS



OUR ONLINE SHOP IS NOW OPEN

- FAIR TRADE GIFTS & ORNAMENTS
PERENNIALS
SUCCULENTS
SHRUBS & TREES
POTS
COMPOST
BEDDING PLANTS
METAL WORK
TOOLS
ROSES

www.twignurseries.com order online now with free local delivery

# THE PLUMBER

Apprenticeship Served 1972 - 78

City and Guild Qualified

**ON CALL EVERYDAY**

Domestic and Commercial Installations,  
Maintenance and Repair Service.

- 💧 Burst/Leaking Pipes
- 💧 Blocked Sinks/Toilets
- 💧 Hot Water Tanks
- 💧 Overflows
- 💧 Showers
- 💧 Radiators and Pumps
- 💧 Garden Taps/Water Butts
- 💧 Fault Finding
- 💧 FREE WRITTEN QUOTE

Call The Plumber Anytime

**07970 317843**

theplumber@email.com

*1<sup>st</sup> aid for your plumbing*



**MIND  
AND  
BODY**

## Zoom Clinical Pilates Classes

**Mixed Ability**

Mon & Wed @ 9.30am

**Older Adult**

Mon & Wed @ 11.15am

**Chair Based**

Tues & Thurs @ 10.30am

### Also Available

Private 1:1, Small Group, Reformer, Combo  
Chair, Specialised Exercise for Older Adults  
& Neurological Conditions

**Ruth Reid** APPI

**07736 438443**

**info@rlr-therapy.com**

**www.rlr-therapy.com**

**FB or LinkedIn**



# THE CUTTING CORNER

Est 1998

Traditional Barber Shops



## NEW LARGER SHOP NOW OPEN

### WINSLOW

Opening times:  
Tues, Weds & Fri 9am-6pm  
Thurs 9am-7pm  
Sat 8.30am-5pm

2a High Street  
Winslow  
Buckinghamshire  
Tel: 01296 715240

### BLETCHLEY

Look online for opening hours.  
140 Buckingham Rd  
Bletchley, Milton Keynes  
Tel: 01908 375987

Appointments available  
Thursdays, Fridays and Saturdays at  
74 High Street, Winslow.  
Book online via our  
website



[www.cutting-corner.co.uk](http://www.cutting-corner.co.uk)

**FREE PARKING!** Find us on Facebook



# RK Plumbing and Heating

- Bathroom Installation
- Central Heating Systems
- All Plumbing Work Undertaken
- Landlord Gas Safety Certificate
- Breakdown and Repairs

FOR A JOB WELL DONE

To get a free quote  
Call Rick on 07720 265645

or

email: rick@rkplumbing.net

www.rkplumbing.net



Reg. No. 191568

**Shaun Guard TV & WIFI SERVICES**

- Aerials - repaired & supplied and poor reception solved
- Satellite - Sky Q dish upgrades, discreet dish installation
- Internet - blackspots cured, data cables to your TVs
- TVs - hung on your wall or set up and tuned
- CCTV & Door Entry - domestic installations

**OXFORD AERIALS**  
www.oxfordaerials.co.uk  
**Call Bicester 01869 879111**



## THE IRON LADY IRONING SERVICE

**01908 504080**

(Mobiles: 07733 120741 & 07713 215362)

Do you REALLY DISLIKE LAUNDRY & IRONING?

*If so, we have a service to suit you.*

A weeks washing? just a few shirts? or is it the entire package; washing, drying and ironing? You're not alone... At The Iron Lady we offer a service thats daily, weekly, fortnightly, monthly or even just when it gets too much!

*Make your life simpler & call us. Fast, friendly and reliable.*

Washing and/or Drying Service

Ironing Service

Pick up or delivered to your door

Drop off's Welcome

Mon-Thurs 8am-1pm

e: tandldec@aol.com

Unit 2 • Bacon House Farm • Warren Road • Little Horwood • Milton Keynes • MK17 0PS



## Buckingham Wills & Probate

Part of Bicester Wills Ltd

- Standard Single Will - **£199**
- Standard Mirror Wills - **£299**
- Lasting Power of Attorney Property & Financial or Health & Welfare - **£325 each**  
Both types for one person - **£500**  
Both types for a couple - **£950**
- Probate Assistance from - **£1,200**
- Prepaid Funerals Plans - from **£1,700**

Home visits  
no extra  
charge!!

Gail and Lesley offer a friendly estate planning service



Come in and see us  
The Garage, Castle Street,  
Buckingham, MK18 1BS  
or phone 01280 811201



lesley@buckinghamwillsandprobate.co.uk

01280 811201

www.buckinghamwillsandprobate.co.uk



## Quality Decorators

Over 15 years experience

- ∞ Interior and Exterior
- ∞ Hand Painted Kitchens
- ∞ Airless Spray System
- ∞ Free Quotations and Friendly Advice

### Contact

01280 816699

07941 054 831

www.callinghams.com



# MICK WOOD

## Heating Services Ltd

**SERVICE, REPAIR & INSTALL**  
**OIL FIRED BOILERS**

We are Grant G1 & Worcester AI approved boiler installers who are able to offer longer warranties at no extra cost to you.

All installations are to Oftecregulations.

**OIL FIRED COOKERS**  
(Service & breakdown only)

- \* Prompt personal attention
- \* Oil tank gauges fitted
- \* Power flushes



Registered  
Technician

**Tel: 01296 730 670**  
**Mobile: 07979 645 472**

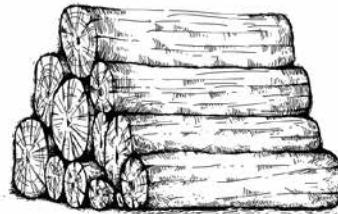
# Jason's Logs

Good quality logs delivered  
in full and half loads.

Garden clearance,  
Tree management  
Pruning services

Based at Edgecott

**Tel 07961 538035**



## Chartered Accountants and Business Advisers

For all your accountancy needs

|                          |                        |
|--------------------------|------------------------|
| Bookkeeping services     | Accounts preparation   |
| Corporation Tax          | VAT Returns & services |
| PAYE Returns & services  | Company formation      |
| Company secretarial work | Tax planning advice    |
| Self-Assessment          | Tax Return preparation |

**The Barn, 11a Queen Catherine Road,  
Steeple Claydon, Bucks MK18 2PZ**

Contact us for a free consultation

Tel: 01296 738668    01296 826177  
Mob: 07812 026346  
Email: office@ajrandco.co.uk



Chartered  
Accountant  
& Business  
Adviser

**AJR  
&Co**

## Window Cleaning

AND GUTTER CLEARING

WINDOWS CLEANED REGULARLY,  
ONCE EVERY 2 MONTHS,  
INCLUDING ALL FRAMES AND DOORS  
FOR NO EXTRA COST.

**CONTACT CARL ON**

**07979 395 101**

or

[countryhousecleaning100@gmail.com](mailto:countryhousecleaning100@gmail.com)

FOR A FREE QUOTE.  
also PRESSURE WASHING  
OF PATIOS AND DRIVEWAYS

# **D. Johnston**

## **Heating & Plumbing Solutions**

**Boiler installations / servicing / repairs**

**Oftec registered oil boiler specialist**

**Gas safe registered**

**Landlord Safety Certificate**

**Full Central heating Installations**

**Under Floor Heating**

**General Plumbing**

**Power flushing**

**Pressurised hot water systems**

**Bathroom installations**



[www.d.johnstonhps.co.uk](http://www.d.johnstonhps.co.uk)

Email: [djohnstonhps@outlook.com](mailto:djohnstonhps@outlook.com)

Tel: 01296 655169 / Mob: 07702 036217

# Precise PVC-u Building Supplies Ltd

Suppliers of Building Plastics

Precise PVC-u Building Supplies Ltd is a family run company based in Bletchley, Milton Keynes. We are established since 2003 and pride ourselves on our friendly and informed customer service.

Our experience in the trade ensures that we supply the best quality PVC products to all our customers. We guarantee next day delivery on all of our stocked items. We are a supplier of a wide range of plastic building products. Many of our customers use our services like a manufacturers and suppliers as we can order any product that is currently not in stock.

We are suppliers for window fitters, builders, plumbers and DIY enthusiasts. Whether you're an individual who likes home improvements or a professional window fitter we are able to supply you with all the necessary materials. Come down to the industrial estate and see how we can save you and your company money on all your PVC supplies.

## Some of our specialist PVC-u products include:

- Fascias, soffits and guttering fixtures and fittings
- Window sills
- Skirting boards
- Draining pipes
- Door panels and accessories including cat flaps and letter boxes
- Lead Roofing
- Polycarbonate for lean two's and conservatories
- Underground drainage
- Trims, pins, nails, tools bagged sand and cement
- Silicone, solvents and adhesives



**FREE**  
next day delivery  
to the local area  
on stocked items  
on orders over  
£50



MK ONE Business Centre

Unit B, 12a Romar Court, Bletchley, MILTON KEYNES MK1 1RH

t: 01908 270 994 e: sales@preciseupvc.co.uk

Editor: David Brazier editor@ghfocus.com  
 Typing & Layout: David Brazier, Andy Gibbs.  
 Printing: Harlequin Press Ltd.  
 Copy deadline: 15th of month before publication.

Distribution: June Margerrison, Ann Biggins,  
 Edwina Daymond, Louise Edwards,  
 John Gilbey, Valerie Hancock,  
 Duncan Hogston, Cathy Holland,  
 Ian Lamberton, Gary Lee, Angela Mayne,  
 Gill Wood, Kathy Thompson, Sylvia Whitehall.

Available online at: [www.e-voice.org.uk/ghpc](http://www.e-voice.org.uk/ghpc)

## WE'RE HOLDING A SOCIAL EVENING ON GREAT HORWOOD RECREATION GROUND

Drop in and join us on the Rec  
 between 5pm - 7pm  
 on  
**Tuesday 13th July**

Please bring your own picnic and a chair  
 Come for a chat, we'd love to meet you!  
 (children also welcome)

Who we are - we're the WI -  
 but not as you know it!

Contact :  
 Angela 01296 715400  
[angela.mayne@googlemail.com](mailto:angela.mayne@googlemail.com)

Monica 01296 711915  
[monicagilbey@gmail.com](mailto:monicagilbey@gmail.com)

**BRING THE WHOLE  
 FAMILY TO:**

GREAT HORWOOD'S  
**Summer  
 FETE**

**SATURDAY 3 JULY**  
**1PM - 4PM**  
**GREAT HORWOOD VILLAGE GREEN**

.....  
**DOG SHOW**  
**BBQ**  
**CRAFT STALLS**  
**ICE CREAM VAN**  
**SILVER BAND**  
**REFRESHMENTS**  
**and much more!**

## Piano Lessons

### PIANO TEACHER

Why not expand your mind and interest in music  
 with a fully qualified teacher of over 30 years experience  
 teaching youngsters and adults for fun and exams.

Call: Geraldine 07890 268387  
[email:gerryrb@btinternet.com](mailto:email:gerryrb@btinternet.com)



### Trevor Evans

#### 'Your Personal IT Man'

PC Support, Secure Wireless Broadband and Home  
 Networks,  
 Anti-Virus and Anti-Spyware Support

I can help you solve your IT problems and requirements

A Friendly and Professional Service

Call or Email me for a No-obligation Chat

☎ 01296-714413

✉ [trevor@trevorevans.me.uk](mailto:trevor@trevorevans.me.uk)