

FEBRUARY  
2022



# Great Horwood Scout Group

We have all now returned to our regular meetings and boy are they interesting. All credit to the young people and adults for putting together exciting programmes for this term including residential planned for all 3 sections this year and in tents!!

Each section loves taking part in Village activities and this year will hopefully see us again taking part in litter picking, Village Fete and Remembrance Parade and any other village events going.

As a Group we are now operating a waiting list for Beavers and Cubs; so, don't delay if you want to join. Please contact me and get your name on the list at [adcbandc@uwclub.net](mailto:adcbandc@uwclub.net)

With each section comes the need for more adult help; volunteering with the Group is very flexible; be it just doing the refreshments to helping behind the scenes or being an Appointed Leader.

Currently we have the following vacancies:

## Assistant Beaver Leader, Assistant Cub Scout Leader

With whatever role you take on at the Group there is an element of training to be done and this is done via e-learning or as a face-to-face course covering a few modules at a time over a couple of weekends. You will be always supported by myself and the Chairperson.

Why not take up our 4-week challenge to see how you get on

**Week 1** - Come and see what we do      **Week 2** - Help Out      **Week 3** - Get a little more involved      **Week 4** - Deciding if Volunteering with Scouts is for you

Each section is open to Young Leaders (14-18 years) so if you are doing your Duke of Edinburgh Award or would like to get experience working with Young People then please contact me: [adcbandc@uwclub.net](mailto:adcbandc@uwclub.net)

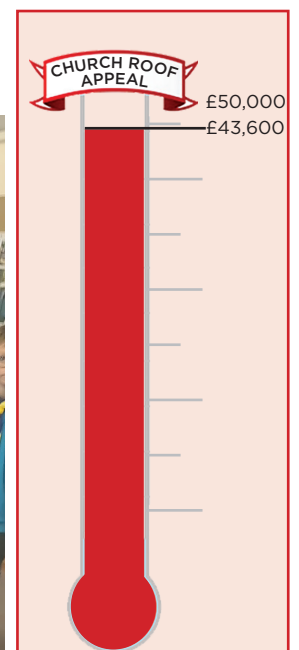
A full training programme is available and looks awesome on your CV for college / University; not forgetting applying for jobs!

*Yvonne Taylor MInstLM*

*Acting Group Scout Leader - 1st Great Horwood Scout Group*

*Assistant District Commissioner Beavers and Cub Scouts - Buckingham, Winslow and District*

*County Training Adviser - Buckinghamshire*



Advertising and copy deadline for next issue : 15<sup>th</sup> February 2022.  
To advertise or submit articles email: [editor@ghfocus.com](mailto:editor@ghfocus.com)

### Light up the tower of St James

If you wish to sponsor the tower lights for that special occasion, please help us by using this form for your request.

I would like to sponsor the lights on the following date(s):

Date:

Commemorating

**The cost is just £5 per night.**

Cheques payable to: Great Horwood PCC.

Please send to Ian Lamberton

3 The Green, Great Horwood MK17 0RH.

Tel: 01296 715968



WHERE FITNESS AND FUN

*Come to Party!*



In Person and Online Classes

Full Schedule and Information

[www.jazzercisebbh.com](http://www.jazzercisebbh.com)

To book your spot, contact Keri

07900 987230 [jazzercise1@hotmail.co.uk](mailto:jazzercise1@hotmail.co.uk)

## HomeGym Equipment available for hire



- Treadmills
- Cross Trainers
- Bikes
- Rowing Machines
- and much more



Refer a friend for a weeks **FREE HIRE**

**Call 0800 043 2148**

[enquiries@homegymuk.com](mailto:enquiries@homegymuk.com)

[www.homegymuk.com](http://www.homegymuk.com)

## MICK WOOD



Heating Services Ltd

**SERVICE, REPAIR & INSTALL**

**OIL FIRED BOILERS**

We are Grant G1 & Worcester AI approved boiler installers who are able to offer longer warranties at no extra cost to you.

All installations are to Oftecregulations.

**OIL FIRED COOKERS**

(Service & breakdown only)

\* Prompt personal attention

\* Oil tank gauges fitted

\* Power flushes



Registered Technician

Tel: 01296 730 670

Mobile: 07979 645 472



# Church Times

Church Wardens:

David Brazier 714712 and June Margerrison 714554

[www.winslowbenefice.org.uk](http://www.winslowbenefice.org.uk)

## St James' Services for February

6th Feb	11.00am	Holy Communion
13th Feb	11.00am	Come and Praise
20th Feb	11.00am	Holy Communion
27th Feb	11.00am	Come and Share
6th Mar	11.00am	Holy Communion

## Sidesmen

I Lamberton
J Margerrison
D Brazier
P Moyles
I Lamberton

## Readers

I Lamberton
R Margerrison
S Brazier
S Bayliss
I Lamberton

## Intercessions

J Brigden
J Margerrison
D Brazier
Clergy
J Brigden

Church Key - February - Denise & Robert Davies - Tel 712763

## CHURCH LIGHTING

The tower was lit on the 14th of December for Innis Grant's Birthday and on the 16th of December for the 90th Birthday of Mary Elmes.

The tower was lit on the 15th of December for the funeral of Philip Kilkenny.

Eve Blane was also remembered on the 11th of January.

## FOCUS DISTRIBUTOR REQUIRED

We would like to thank Angela Mayne for her years of delivering Focus and wish her and her husband David good luck in the future.

We do now need a new distributor for Focus for the Nash Road - we produce 10 editions a year and they will be delivered to your house to be distributed at your leisure by the start of the month. Please contact June Margerrison on 714554 if you are interested.

## GREAT HORWOOD VILLAGE HALL

Linda is doing a grand job with the reopening of the coffee service during the Post Office on Wednesday mornings. from 9.30 to 11.00

Jeet regrets that he was unable to open on a couple of occasions and we always communicate on the village Facebook page if we know in advance..

With Covid restrictions easing we hope that the Hall maybe used more by our local community.

*Ian Lamberton 01296 715968*

*ianlamberton@aol.com*

## MEN IN SHEDS WINSLOW

Figuring out how many extra layers you can wear while still being able to move has provided an extra challenge in the Shed this year- boy has it been cold in our 'warehouse' space! Among our hardier regulars is Stefan who is clearly made of tougher stuff than the rest of us - it must be young blood or his appetite for upcycling that

keeps him going when most of us are heading to the cosier inside bench area or looking for a mug of something hot.

Winslow Shed is a community resource, and our priority is to provide a welcoming social space for men with time on their hands. If we can fix or make something to help an individual or community group while we're at it then so much the better. It follows that the job needs to be done here at the Shed and a recent fix we helped with certainly fitted that bill. A wheelchair needed a simple repair and some adjustment to suit its new owner but knowing who to talk to, what work was needed and what it might cost had proved to be an understandable but unnecessary stumbling block to getting things sorted. In the event it cost the price of one new bolt (we've got loads) and an hour or so tinkering in the warm comfort of our social area. If there's something you think we can help with then do drop in for a chat or get in touch.

The first of three playground projects for Winslow School - a 'playshop' is now taking shape and it's good to see Dick indulging his new found passion for woodworking. Having honed his skills on countless projects to support the community food cupboard, Dick is now delighting his family with the wooden treasures they never had and probably never thought Dad would be making for them. Dick - we salute you!

The Shed is open every Tuesday and Thursday from 10:00-4 :00 at Unit 4, Station Road Ind. Estate. [www.MenInShedsWinslow.org.uk](http://www.MenInShedsWinslow.org.uk) Or for more infor call Dave Saunders; 01296 714164.

To advertise or submit articles email:  
[editor@ghfocus.com](mailto:editor@ghfocus.com)

BY 15th MONTH



**Do more.  
Learn more.  
Be more.**

Put your skills to use, learn new ones, and contribute to an amazing life-experience for you and your local community.

Volunteering is easier than you think. With full support and training, you can volunteer on a flexible basis.

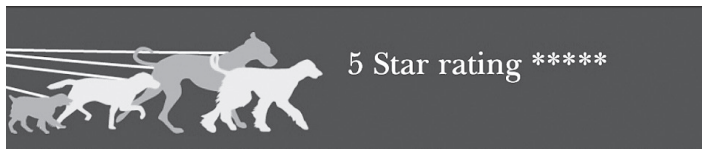
Put your skills to use, learn new ones, and contribute to an amazing life-experience for you and your local community.

Volunteering is easier than you think. With full support and training, you can volunteer on a flexible basis.

[scouts.org.uk/join](http://scouts.org.uk/join)

**#SkillsForLife**

Copyright 2018 The Scout Association Registered Charity numbers 306101/SC038437



5 Star rating \*\*\*\*\*

## Greenway Dog Walking

DAYCARE AND BOARDING WITHIN THE FAMILY HOME  
GROUP OR INDIVIDUAL WALKS, POP-INS  
QUALIFIED CANINE 1ST AID AND EMERGENCY CARE  
CPD CANINE BODY LANGUAGE  
FULLY INSURED AND LICENSED LC-201905 37236  
BUCKS CC

FIND US ON FACEBOOK  
PLEASE CALL LOUISE FOR ANY ENQUIRIES  
07889658215  
BASED IN GREAT HORWOOD



## HOLLAND ENGINEERING SERVICES



**MOT TEST STATION**  
**Motorcycle servicing & repairs**  
**Quads & Lawnmowers**  
**Parts and tyres**  
**Mig/Tig Welding**

Salden Crabtree Farm

## Piano Lessons

PIANO TEACHER

Why not expand your mind and interest in music with a fully qualified teacher of over 30 years experience teaching youngsters and adults for fun and exams.

Call: Geraldine 07890 268387

email: [gerryrb@btinternet.com](mailto:gerryrb@btinternet.com)



Established 1990

**Your Local  
Window and Conservatory  
Specialists**  
**Products made to suit in  
UPVC**

*From Design thru' to completion ...*

**01296 712151**

Email: [NandGwindows@aol.com](mailto:NandGwindows@aol.com)

*FENSA Registered*



## GARDENING TIMES

We are now in February, and it may seem that there is nothing going on. The garden is asleep, aside from breaking the ice on the bird bath and making sure that all of your fat balls are out for the wildlife you would be forgiven for thinking that there was precious little to do. There are some plants that really appreciate a long growing season. Chillies, peppers, tomatoes and aubergines could all do with being sown on a sunny, warm windowsill at the moment. The abundance of produce will be the reward for biting the bullet and getting them in earlier.

There are more plants than you might imagine that will appreciate getting a head start now alongside these sun lovers, plants that are more suited to our cooler climes. These leafy greens don't like being too hot (it causes them to go straight to seed) and relish the cool.

Prime amongst this pack is Parsley. Germination rates can be quite variable, so you don't want to scrimp on the seed. Legend has it that only fair maidens should sow the seed as once in the soil it works its way down to the Devil. If the seed has been planted by someone who is virtuous (as all maidens are obviously), then Satan spits it out, it works its way back up to the surface and grows into a wonderful culinary herb. If it has been planted by a man, with all of his unvirtuous thoughts, deeds and general vileness, when the seed gets to the devil, he gobbles it up and it is irretrievably lost for ever. However, the cause of Parsley's intermittent germination is quite common in its family (Apiaceae, the same family as Carrot, fennel, celery, parsnip) so I wouldn't worry too much about the state of your soul... although it is never too late to turn over a new leaf.

## WINSLOW AND DISTRICT ART SOCIETY

Our weekly meetings continue to be held in Winslow every Thursday morning and Padbury every Tuesday morning. Anyone over age 16 with an interest in visual arts is eligible to become a member subject to a small subscription. We are a friendly and helpful group and anyone who is interested in becoming a member can find more details on our website [www.winslowart.org.uk](http://www.winslowart.org.uk)

Demonstrations in a range of media are normally held at Winslow Bowls Club on the last Thursday of each month. Entry is from 7.00 pm for a 7.30 start. Details are:

**24 February** - Keith Hornblower - Watercolour, Venetian or Thames scene

**31 March** - Heather Miller - Acrylics

**28 April** - Tony Jackson - Pastels, still life

If you sow parsley seed now (preferably undercover), then they will be ready to flower their beautiful lime green flowers in mid-spring, attracting all of these wonderful pollinators such as hoverflies and bees into your garden. It is a win-win situation. Flat leafed Parsley has the superior flavour, go for "Giant Italian" or the evocatively named "Plain leaved 2". They are big plants and a 10-litre pot (or planted 30cm apart) is the minimum that you want them in.

Spring is just around the corner, and it is good to know that there are things that you can be getting on with.

### Jobs to do this month

- If you have a Buddleia or Elder in your garden that is far too big now is the time to do it, cut them back as hard as you can, don't worry, it'll take more than that to kill them.
- Once snowdrops have finished flowering, this is the time to lift and divide them and spreading them around your garden. Even better you can give some to friends.
- Chit any early potatoes that you are going to grow this year, (this just means putting them in a warmer place to allow them to develop their buds.
- If your hedge is in need of a prune, do it now, before any birds start nesting in there. Similarly now is the time to clean out birdboxes before you get lodgers (but check that it is empty first!)
- Tidy and turn any compost heaps that you may have, this gives room for all of the additions that will come later in the year

**26 May** - Melissa Wishart - Oil, seascapes

**30 June** - Stanley Hurr - Watercolour, flowers

These are enjoyable and informative evenings and last about two hours with a break for tea and biscuits. Non-members are welcome to attend, and entry will cost £5.00

Our new Facebook facility is now up and running so please visit us to see what's going on.

If you are interested in more information please look at our website [www.winslowart.org.uk](http://www.winslowart.org.uk) or contact:

*Chair: Maureen Barnes 01280 815691*

*Secretary: John Beckerleg 01280 816932*

*Treasurer: Jackie Chambers 01296 713607*



MOORESPARKS  
ELECTRICAL



07708 531 227 / 01296 708 683



mooresparks@hotmail.com



www.facebook.com/mooresparkselectrical



@mooresparkselectrical

- FREE QUOTATIONS
- DOMESTIC & COMMERCIAL
- LIGHTING & POWER
- FAULT FINDING
- REWIRES
- CONSUMER UNITS
- TESTING, INSPECTION & CERTIFICATION



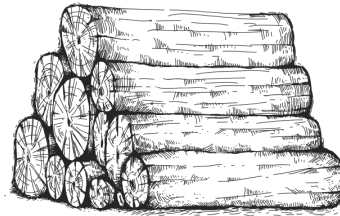
# Jason's Logs

Good quality logs delivered  
in full and half loads.

Garden clearance,  
Tree management  
Pruning services

Based at Edgecott

Tel 07961 538035



OPENING HOURS  
Please check our website for up to  
date opening hours



TWIGS NURSERIES  
Windy Ridge, Thornborough, Buckingham,  
MK18 2DZ  
twignurseries@gmail.com



SPECIALTY COFFEE,  
PIZZA, HOT CHOCOLATE,  
TEA, CAKE

PERENNIAL PLANTS

FAIRTRADE GIFTS  
AND ORNAMENTS

BEDDING  
PLANTS

SHRUBS & ROSES

INDOOR PLANTS  
AND POTS







### Finance manager needed (part time)

Nipperbout is a national mobile childcare provider, registered with Ofsted, servicing exhibitions, conferences, festivals, fun days and events throughout the UK and Europe.

We are seeking a **part time finance manager** to join our friendly team based in **Singleborough**

**PAY - £20 per hr for 12 - 18 hrs a week**

**DBS check will be required but not needed for application.**

Skills Required:

- AT, CIMA, ACCA or QBE qualified
- Bookkeeping
- Very experienced with Payroll (ad hock zero hour contractors)
- Producing management accounts
- Budgeting and cashflow forecasting

Full job description available on request

Nipperbout is committed to safeguarding and promoting of welfare of children and has a culture of ongoing awareness and vigilance throughout the company.

Contact: Janthea Brigden 07976 430598 or email [events@nipperbout.com](mailto:events@nipperbout.com) for an application form and full job description.



You take care of the big event... we'll take care of the little ones!

## RK Plumbing and Heating

- Bathroom Installation
- Central Heating Systems
- All Plumbing Work Undertaken
- Landlord Gas Safety Certificate
- Breakdown and Repairs

**FOR A JOB WELL DONE**

To get a free quote  
**Call Rick on 07720 265645**

or

email: [rick@rkplumbing.net](mailto:rick@rkplumbing.net)  
[www.rkplumbing.net](http://www.rkplumbing.net)



## GREAT HORWOOD PARISH COUNCIL

### Useful contact details

Great Horwood Parish Council

### Members of the Parish Council :

Please note that councillors now have a dedicated Parish Council email address. This is in order to comply with new Data Protection Regulations that came into force in 2018. It is good policy to keep council emails separate from private emails.

**John Gilbey** Chairman 01296 711915  
[johnwgilbeypc@gmail.com](mailto:johnwgilbeypc@gmail.com)

**Caroline Cousin** Vice Chairman 01296 713548  
[carolinecousinghpc@gmail.com](mailto:carolinecousinghpc@gmail.com)

**Robert Davies** 01296 712763  
[robert7\\_daviesghpc@yahoo.com](mailto:robert7_daviesghpc@yahoo.com) 07967 868881

**Dave Taylor** 07980 546484  
[daveghpc@btinternet.com](mailto:daveghpc@btinternet.com)

**Jackie Goss** 01296 713135  
[jackiegossghpc@gmail.com](mailto:jackiegossghpc@gmail.com)

**Gavin Laird** 01296 712798  
[Gavinlaird78ghpc@gmail.com](mailto:Gavinlaird78ghpc@gmail.com)

### Clerk to the Council

Mrs Sue Brazier 01296 714712  
[clerk@greathorwoodpc.org.uk](mailto:clerk@greathorwoodpc.org.uk)

**Parish Council Website** [www.e-voice.org.uk/ghpc/](http://www.e-voice.org.uk/ghpc/)

**Great Horwood Village Hall Bookings** 01296 715968

**Doctors Car Service** 07704 140110

**Winslow and District Community Bus** 01296 715786

**Aylesbury Vale Dial-a-Ride** 01296 330088

**Community Police Officers**

PCSO Andy Piotrowski Tel: 101  
[WinslowandDistrictNHPT@thamesvalley.pnn.police.uk](mailto:WinslowandDistrictNHPT@thamesvalley.pnn.police.uk)

## theWI GREAT HORWOOD AND SINGLEBOROUGH WI

INSPIRING WOMEN

The WI Christmas Party in December, held in the village hall, was a great success with members joining in games and enjoying some festive party food and wine.

Covid prevention measures were observed to ensure that guests were safe and the committee decorated their masks with tinsel and Christmas themes.

With the rise of the highly infectious Omicron variant in early January, it was decided that the Celebrity Quiz for our first meeting in 2022 be held on Zoom. A decision on the February meeting will be taken nearer the time but with infection numbers waning and the majority of symptoms mild, we are hopeful that we will have face to face meetings from next month onwards. Our guest speaker for February will be Ken Brazier talking about the adventure of an old man climbing Kilimanjaro.

Our Walking Group is now 10years old! Karen Wilkinson who started it in January 2012, says it was "partly for the exercise and social side of it and partly to try and encourage WI membership which was on the low side at that time". The group has since gone from strength to strength, moving from fortnightly to weekly walks. "Since being 'allowed out' of lockdown at the end of March 2021 to just before Christmas, we walked a total of 147 miles and enjoyed numerous cups of coffee," says Karen. "If anyone would like to join our rambles, please do get in touch.

We walk on average 3.5 - 5 miles on a Monday morning." Phone Karen for more details on 712933.

If you've recently moved to Great Horwood, the local WI is a great place to meet people and get to know hidden gems in Buckinghamshire. As



A photo of Buckingham during one of our January rambles.

well as monthly meetings with a guest speaker every month, we also enjoy trips to places of interest (not all open to the general public), workshops, lunches and afternoon teas.

Some of our most loyal members were initially reluctant to join the WI but having experienced it are now the strongest advocates. As one new member commented, "Since joining my impression of the WI has radically changed. I would highly recommend the WI for the friendship and interesting people we get to meet. And not a jar of jam in sight."

If you would like to attend our February 8th meeting to see if the WI is for you, please contact Ann Biggins annieqqmk@gmail.com 07961 960802. More details can be found on the noticeboard outside the Village Hall.

### NEW 60A BUS SERVICE

I am pleased to say that the new 60A bus service for the village which provides 2 trips to Buckingham and 2 trips to Aylesbury from Monday to Friday started to run as promised on 4th January.

You can get the first service to Buckingham at 10.24am and this will get you to Tesco Buckingham at 10.33am. If you just want to get a few items of shopping in Tesco or Lidl or a Big Mac from the new McDonald's you have time and can then take the return bus at 10.50am arriving back in Great Horwood at 10.59am.

Alternatively, you can continue to the High Street in Buckingham and spend a couple of hours browsing the shops and catch the 12.45 bus back to the village.

If you need to go to Aylesbury for a visit to your bank the first bus from the village leaves at 10.59am and will get you to Aylesbury Bus Station at 11.38am. You will have plenty of time to do your banking and have a leisurely lunch before catching the 1.45pm bus back to arrive in the village at 2.24pm.

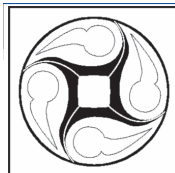
Also, if you are a senior citizen like me the journeys are completely free of charge using your Buckinghamshire Council bus pass.

A copy of the timetable is on the notice board in the High Street.

Cllr. John Gilbey







Great Horwood  
Parish Council

## PARISH PUMP

### PARISH COUNCILLOR VACANCY

Great Horwood Parish Council has a vacancy due to the resignation of Cllr. Mayne and we would very much like to hear from any resident willing to become a co-opted member of the Council. If you care about our community, like meeting people and have some time and energy, you might be the person we need to fulfill this very important role.

Councillors represent the interests of the whole community and can contribute towards a wide variety of topics. Over the years, the Parish Council has devised a Neighbourhood Plan, commented on many planning applications, contributed to the management of Horwode Pece and the Village Hall and overseen the recent housing developments in the village.

Parish Council meetings are held in the Village Hall at 7.30pm on the 2nd Monday of every month except for January and August.

If you are interested, please contact the Clerk on the details below. An informal chat can be arranged with a Councillor to find out more.

### THANK YOU, ANGELA

The Parish Council would like to thank Cllr Angela Mayne for her service to the village during the past 10 years. We send our good wishes to you as you look forward to a more relaxing time when you leave the village.

### THE QUEEN'S PLATINUM JUBILEE 2022

As you will all know, the Queen is celebrating her Platinum Jubilee this year and we have a four-day weekend to look forward to from Thursday 2nd June to Sunday 5th June. It would be very fitting if Great Horwood could make an occasion of this – after all, it's not going to happen again!

So far, we have planned the following:

**Thursday 2nd June** - The Great Horwood Silver Band will be playing on The Green in the evening. This will lead up to a bugler playing a specially written piece, the unique Bugle Call 'Majesty' at 9.40pm followed by the beacon lighting at

9.45pm. So far, there are 1500 beacons that have been registered and will be lit throughout the United Kingdom, Channel Islands, Isle of Man, and UK Overseas Territories.

There are many ways that have been launched to celebrate this historic occasion. Have a look at <https://www.royal.uk/platinum-jubilee-central-weekend> to find out more.

Another long-standing tradition, as well as beacon lighting is street parties and tea parties, large and small. Many of you may remember the Picnic on the Pece that has been held during past summers.

**The Big Jubilee Lunch** has been launched for the Sunday, which could take place at Horwode Pece if there was enough interest.

There will also be **The Platinum Jubilee Pageant** taking place in London which is a festival of creativity including artistic performers, dancers and musicians to name but a few. We all know there are many talented individuals in the village who I'm sure would make a great job of entertaining us if they would like to.

If you would like to express an interest in organising or helping with either of the above, or have any other ideas, please let me know as soon as possible so we can look into other events being organised if there is enough interest.

### FOCUS ONLINE

Did you know that there is an online edition of Focus with every copy from February 2012?

So, if you have mislaid your copy and can't find the information you need, just log onto

<https://e-voice.org.uk/ghpc/focus-magazine/>

The date of the next meeting is **Monday 14th February at 7.30pm** in the Village Hall. Minutes of meetings can be found on the noticeboard and the Parish Council website [e-voice.org.uk/ghpc/](https://e-voice.org.uk/ghpc/)

*Sue Brazier, Parish Clerk Great Horwood  
clerk@greathorwoodpc.org.uk*

**Let the village now what is happening  
in your club or association.**

**Is your family celebrating or commemorating  
a special occasion? Share it with the village.**

**Send pictures and details to  
editor@ghfocus.com**

**Deadline day is 15th of month prior to publication.**



# Claydon Auctioneers

Auctioneers of:

Antiques, Collectables, Silver, Jewellery, Watches, Paintings & Prints, Furniture, Clocks, Militaria, Sporting Goods & Memorabilia, General Goods & Chattels, etc.

Free auction valuations available, Partial & total house clearance service, Insurance, probate & family division valuations

Auctioneer: Louise Gostelow

Contact: 01296 714434  
 info@claydonauctioneers.com  
 www.claydonauctioneers.com  
 Claydon Auctioneers Ltd.  
 The Claydon Saleroom,  
 Calvert Road, Middle Claydon,  
 Buckinghamshire, MK18 2EZ



## Buckingham Wills & Probate

Part of Bicester Wills Ltd



- Standard Single Will - **£199**
- Standard Mirror Wills - **£299**
- Lasting Power of Attorney Property & Financial or Health & Welfare - **£325 each**  
 Both types for one person - **£500**  
 Both types for a couple - **£950**
- Probate Assistance from - **£1,200**
- Prepaid Funerals Plans - from **£1,700**

Gail and Lesley offer a friendly estate planning service



Come in and see us  
 The Garage, Castle Street,  
 Buckingham, MK18 1BS  
 or phone 01280 811201



lesley@buckinghamwillsandprobate.co.uk 01280 811201  
 www.buckinghamwillsandprobate.co.uk



# THE CUTTING CORNER

Est 1998

Traditional Barber Shops

NEW LARGER SHOP NOW OPEN

## WINSLOW

Opening times:  
 Tues, Weds & Fri 9am-6pm  
 Thurs 9am-7pm  
 Sat 8.30am-5pm

2a High Street  
 Winslow  
 Buckinghamshire  
 Tel: 01296 715240

## BLETCHLEY

Look online for opening hours.  
 140 Buckingham Rd  
 Bletchley, Milton Keynes  
 Tel: 01908 375987

Appointments available  
 Thursdays, Fridays and Saturdays at  
 74 High Street, Winslow.  
 Book online via our website



[www.cutting-corner.co.uk](http://www.cutting-corner.co.uk)

FREE PARKING! Find us on Facebook







# THE PLUMBER

Apprenticeship Served 1972 - 78  
City and Guild Qualified  
**ON CALL EVERYDAY**  
Domestic and Commercial Installations,  
Maintenance and Repair Service.

- 💧 Burst/Leaking Pipes
- 💧 Blocked Sinks/Toilets
- 💧 Hot Water Tanks
- 💧 Overflows
- 💧 Showers
- 💧 Radiators and Pumps
- 💧 Garden Taps/Water Butts
- 💧 Fault Finding
- 💧 FREE WRITTEN QUOTE

**Call The Plumber Anytime**  
**07970 317843**  
**theplumber@email.com**

*1<sup>st</sup> aid for your plumbing*



**Trevor Evans**  
**'Your Personal IT Man'**

PC Support, Secure Wireless Broadband and Home Networks,  
Anti-Virus and Anti-Spyware Support

I can help you solve your IT problems and requirements

A Friendly and Professional Service

Call or Email me for a No-obligation Chat

☎ 01296-714413  
✉ trevor@trevorevans.me.uk

## Shaun Guard TV & WIFI SERVICES



- Aerials - repaired & supplied and poor reception solved
- Satellite - Sky Q dish upgrades, discreet dish installation
- Internet - blackspots cured, data cables to your TVs
- TVs - hung on your wall or set up and tuned
- CCTV & Door Entry - domestic installations

**OXFORD AERIALS**  
[www.oxfordaerials.co.uk](http://www.oxfordaerials.co.uk)  
**Call Bicester 01869 879111**

# ExemplaCare

Exceptional carers & nurses at home

We offer the very best personalised care and support in the comfort of your own home.

We serve Buckingham, Winslow, Brackley & the surrounding villages.

- Personal Care
- Nursing Care
- Home Help
- Complex Care

☎ 01280 821860  
✉ [contact@exemplacare.co.uk](mailto:contact@exemplacare.co.uk)  
🌐 [www.exemplacare.co.uk](http://www.exemplacare.co.uk)

Serving our local community & employing local staff.

## Chartered Accountants and Business Advisers

For all your accountancy needs

Bookkeeping services	Accounts preparation
Corporation Tax	VAT Returns & services
PAYE Returns & services	Company formation
Company secretarial work	Tax planning advice
Self-Assessment	Tax Return preparation

**The Barn, 11a Queen Catherine Road,  
Steeple Claydon, Bucks MK18 2PZ**

Contact us for a free consultation

Tel: 01296 738668    01296 826177

Mob: 07812 026346

Email: [office@ajrandco.co.uk](mailto:office@ajrandco.co.uk)



Chartered  
Accountant  
& Business  
Adviser

**AJR  
&Co**



## Quality Decorators

Over 15 years experience

- ∞ Interior and Exterior
- ∞ Hand Painted Kitchens
- ∞ Airless Spray System
- ∞ Free Quotations and Friendly Advice

### Contact

01280 816699

07941 054 831

[www.callinghams.com](http://www.callinghams.com)



**Dulux  
TRADE**  
Trade & Trusted

# What's my house worth in Great Horwood?

If you want to know, get in touch with Ella Homes and Alexander & Co for your free, no obligation valuation.

We're working in partnership to cover more of your local area.

Aylesbury: 01296 710200

Bicester: 01869 324711

Buckingham: 01280 817400

Winslow: 01296 715386

**ella**

in partnership with

[www.ella.co.uk](http://www.ella.co.uk)

**A  
&**

ALEXANDER & CO

[www.alexanderandco.co.uk](http://www.alexanderandco.co.uk)



# Window Cleaning

## AND GUTTER CLEARING

**WINDOWS CLEANED REGULARLY,  
ONCE EVERY 2 MONTHS,  
INCLUDING ALL FRAMES AND DOORS  
FOR NO EXTRA COST.**

**CONTACT CARL ON**

**07979 395 101**

**or**

**countryhousecleaning100@gmail.com**

**FOR A FREE QUOTE.**

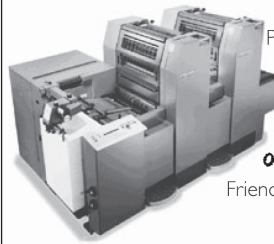
**also PRESSURE WASHING  
OF PATIOS AND DRIVEWAYS**



**HARLEQUIN**  
P R E S S L T D

Lithographic and Digital Printing

- Booklets
- Brochures
- Business Cards
- Compliment Slips
- Delivery Notes
- Directories
- Draw Tickets
- Event Tickets
- Invitations
- Invoice Sets
- Labels
- Leaflets
- Letterheads
- Magazines
- Note pads
- Order of Service
- Personal Stationary
- Postcards
- Posters
- Programmes



**and Focus**

Friendly Service, Free Advice

**Tel: 01908 506722**

12 Bacon House Farm • Little Horwood • Milton Keynes • MK17 0PS  
T: 01908 506722 • E: office@harlequin-press.co.uk • W: www.harlequin-press.co.uk

# Local Musical Theatre Classes

for ages  
**4 - 11**



*Be a star on stage and in life*

BOOK A TRIAL CLASS TODAY AT

**PWACADEMY.COM**

07568 447 131 | 01296 733 258 | admin@pwacademy.com

**Peplow Williams Academy**  
of Theatre and Performing Arts

# **D. Johnston**

## **Heating & Plumbing Solutions**

**Boiler installations / servicing / repairs**

**Oftec registered oil boiler specialist**

**Gas safe registered**

**Landlord Safety Certificate**

**Full Central heating Installations**

**Under Floor Heating**

**General Plumbing**

**Power flushing**

**Pressurised hot water systems**

**Bathroom installations**



[www.d.johnstonhps.co.uk](http://www.d.johnstonhps.co.uk)

Email: [djohnstonhps@outlook.com](mailto:djohnstonhps@outlook.com)

Tel: 01296 655169 / Mob: 07702 036217



# Precise PVC-u Building Supplies Ltd

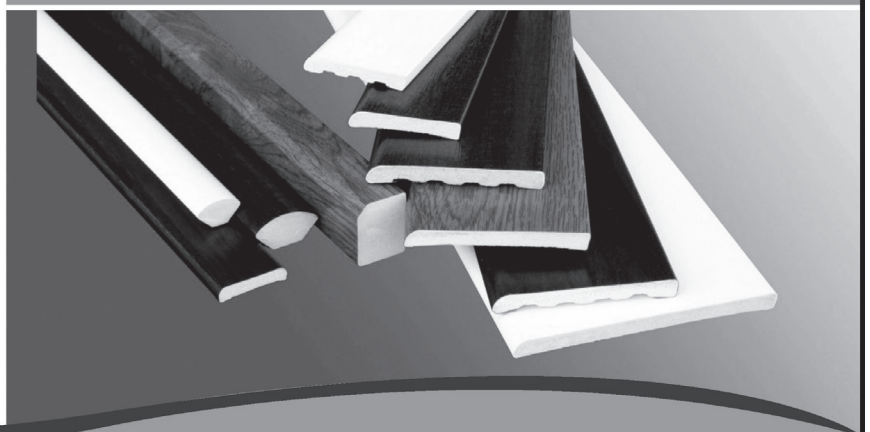
Suppliers of Building Plastics

Precise PVC-u Building Supplies Ltd is a family run company based in Bletchley, Milton Keynes. We are established since 2003 and pride ourselves on our friendly and informed customer service.



Our experience in the trade ensures that we supply the best quality PVC products to all our customers. We guarantee next day delivery on all of our stocked items. We are a supplier of a wide range of plastic building products. Many of our customers use our services like a manufacturers and suppliers as we can order any product that is currently not in stock.

We are suppliers for window fitters, builders, plumbers and DIY enthusiasts. Whether you're an individual who likes home improvements or a professional window fitter we are able to supply you with all the necessary materials. Come down to the industrial estate and see how we can save you and your company money on all your PVC supplies.



[www.precisebuildingplastics.com](http://www.precisebuildingplastics.com)

T: 01908 270 994 E: [sales@preciseupvc.co.uk](mailto:sales@preciseupvc.co.uk)



MK ONE Business Centre, Unit B, 12a Romar Court, Bletchley, MILTON KEYNES, Buckinghamshire, MK1 1RH

**Editor:** David Brazier editor@ghfocus.com  
**Typing & Layout:** David Brazier, Andy Gibbs.  
**Printing:** Harlequin Press Ltd.  
**Copy deadline:** 15th of month before publication.

**Distribution:** June Margerrison, Ann Biggins, Edwina Daymond, Louise Edwards, John Gilbey, Valerie Hancock, Duncan Hogston, Cathy Holland, Ian Lamberton, Gary Lee, Angela Mayne, Gill Wood, Kathy Thompson, Sylvia Whitehall.

Available online at: [www.e-voice.org.uk/ghpc](http://www.e-voice.org.uk/ghpc)

## Winslow Community Bus

[www.winslowbus.com](http://www.winslowbus.com)  
[wdcbenquiries@btconnect.com](mailto:wdcbenquiries@btconnect.com)  
 Tel: 07483 336440



### Winslow & District Community Bus Needs Volunteer Drivers

The Winslow & District Community Bus relies on volunteer drivers to run its services, excursions and hires. We are always in need of volunteer drivers, especially at the moment! So, if you have a D1 on your licence, and have some spare time, please consider becoming a driver for your local Community Bus. You can do as much or as little as you like, from our shorter local runs to some of our longer day trips. We visit all kinds of places, including garden centres, stately homes, shopping centres, countryside drives as well as our regular scheduled bus services, and the people who use the bus are a very friendly crowd! We offer certificated training to MIDAS standard and pay out-of-pocket expenses. Please call or visit our website for more information.

#### We are now running the following services:

**Aylesbury Market Bus - runs every Friday and Saturday morning** -- from Winslow, through Gt Horwood, Little Horwood, Mursley and Swanbourne, arriving in Aylesbury just after 10am and departing at 12.15pm. Bus passes accepted, otherwise £4.50 return.

**Winslow Market Service 54abc - runs every Wednesday morning** This service picks up in the surrounding villages and then into Winslow, (Swanbourne, Mursley, Great Horwood, Whaddon, Nash and The Claydons). Pick up times vary according to village. Bus passes accepted, otherwise £3.00 return

**Buckingham Bus Service - runs on the first Tuesday of the month** Picking up in Winslow and surrounding villages. 1 hour in town then 1 hour in Tesco, or 2 hours in Tesco. Door to door service. Bus passes accepted, otherwise £4.50 return

**Westcroft Shopping - runs every 2nd and 4th Thursday of the month** Picking up in surrounding villages. Morrisons, Boots, Aldi, etc., bus passes accepted, otherwise £4.50 return. Ring to book.

**Despite the government lifting restrictions, we still have the following guidelines in place to help keep yourselves and our drivers safe:**

- Please call and reserve your seat in advance. All 16 seats are back on board but the double seats are still for single occupancy only unless agreed in advance with the coordinator.
- We ask that all passengers wear a face covering while travelling on the bus.
- We also ask that all passengers use the hand sanitiser provided on the bus.

Please contact the WDCB Coordinator for more details.

**Passengers are not to travel on the bus if they or any member of their household are displaying any signs of the COVID-19 virus.**

**Tel: 07483 336440**