

# FOCUS

Great Horwood WI, St James' Church and The Puzzle  
centre

Invite you to an evening with

## Miss Dorothy Wright

(also known as Neil Gurney)

for flower arranging with a unique  
mix of fun & laughter!



**Monday 3rd April**

**at 8.00pm**

**Great Horwood  
Village Hall**

**Flower raffle**

**Tickets £10 (includes glass of wine & refreshments)**

**Contact : Valerie 01296 712997 or Angela 01296 715400**

**[Valerieporritt@gmail.com](mailto:Valerieporritt@gmail.com),**

**[angela.maine@googlemail.com](mailto:angela.maine@googlemail.com)**

**All proceeds to: St James' Church & The Puzzle Centre**

Puzzle Centre registered charity number 1141868

# THE CUTTING CORNER

Traditional Barber Shop



Opening times:  
Tues, Weds & Fri 9am-6pm  
Thurs 9am-7pm  
Sat 8.30am-5pm  
(Closed lunchtime 1pm-2pm)

74 High Street  
Winslow  
Buckinghamshire  
Tel: 01296 714429

No Appointment Needed  
Free Parking

[www.cutting-corner.co.uk](http://www.cutting-corner.co.uk)



Find us on Facebook

Now open until  
7pm on  
Thursdays

# Lannails



Professional Nails & Beauty by Leanne

Acrylic Nails & Gel Nail Polish  
Manicures & Pedicures  
Foil Nail Wraps  
Waxing & Tinting  
Gift Vouchers

Leanne Hammond  
Whaddon Road, Little Horwood

tel: 07825777497

e-mail: [lannails@btinternet.com](mailto:lannails@btinternet.com)

web site: [www.lannails.co.uk](http://www.lannails.co.uk)



Phone: 01296 714534

Web: [www.thecrowngh.co.uk](http://www.thecrowngh.co.uk)



@CrownGHorwood

*Real Ales and Locally Sourced Food on a  
Buckinghamshire Village Green*

## Opening Hours

	BAR	FOOD SERVED
Mon:	5.00 - 11.00pm	Closed for food
Tues:	5.00 - 10.00pm	Closed for food
Weds:	5.00 - 11.00pm	6.30 - 9.00pm
Thurs:	12 noon - 3.00pm 5.00 - 11.00pm	12 noon - 2.00pm 6.30 - 9.00pm
Fri:	12 noon - 3.00pm 5.00 - 11.00pm	12 noon - 2.00pm 6.30 - 9.00pm
Sat:	12 noon - 11.00pm	12 noon - 2.00pm 6.30 - 9.00pm
Sun:	12 noon - 10.30pm	12 noon - 2.30pm

Please call us on 01296 714534 to book a table

## St James' Services for February

5th Feb	11.00am	Holy Communion
12th Feb	11.00am	Come and Praise
19th Feb	11.00am	Holy Communion
26th Feb	8.00am	Holy Communion (1662)
26th Feb	11.00am	Service of the Word
1st Mar	8.00pm	Ash Wednesday Service
5th Mar	11.00am	Holy Communion

## Sidesmen

N Weir
R Hemphill
J Margerrison
-
S Barfoot
I Lamberton

## Reader

I Lamberton
J Hemphill
D Brazier
-
J Brigden
C Finnemore

## Intercessor

D Brazier
S Brazier
J Margerrison
-
Clergy
I Lamberton

**Church Key Rota:** - David Moore - 713281

## Ash Wednesday Service

The Ash Wednesday Service will take place this year on Wednesday 1st March at 8pm. This is a service to mark the start of our time of Lent, as we look forward to the joy of Easter. During the service the imposition of ashes may be received. Everyone is welcome.

## W.I. News

We had a fantastic, varied programme of events at our WI group last year and hope to 2017 will be even better.

We meet every **2nd Tuesday** of the month at **7.30pm**

At our last meeting our speaker was Ken Harris, he told us about John Newton who is known most famously for penning the hymn 'Amazing Grace', whilst he was living in the beautiful town of Olney.

Next month we are lucky enough to have the High Sheriff of Buckinghamshire Milly Soames coming to talk to us about the various duties she undertakes in the role.

If you would like to come along, we always welcome visitors.

**Please contact Jane on 07491 652646 if you are interested.**

*Angela Mayne*

## Great Horwood Mad March Hare 5k Fun Run - Sunday 5th March



How time flies! It is that time of year when keen runners in the village start their training on Pilch Lane for the School's annual fundraiser - The Mad March Hare Run.

For those who haven't taken part before it is a fun event for all ages and abilities (although there are some very keen athletes in the Village and the competition is fierce!).

If you don't fancy running, you are welcome to come and walk the course too! There are medals for all finishers and trophies for different age categories.

Once again we have been sponsored by Marble Arts and PS Properties. The School and PTA are extremely grateful for this as they have been supporting this event for quite a number of years now - thank you to them!

We do need raffle prizes for the event so if you have anything at all you think might be suitable, please give me a call.

Also, we will need Marshalls on the day. If you think is something you can help with, call me on the number below. We look forward to seeing many of you on the day. For any more information call Sheila Landymore 711627.

## Lighting of the Church Tower



The tower was lit on the 30th November to remember Sue Braziers Father

We are very grateful to Marc and Jo Bennett-Coles for sponsoring the lighting of the tower throughout the whole December.

We would also like to thank the Football Club who had the Tower lit in remembrance of Henry Burke for a week December.

It was also lit on the 8th December to remember Mr Blane and on the 11th January for Mrs Blane.

On the 5th January the Tower was lit in memory of Toby Terkelsons 18th Birthday.

*Ian Lamberton*

## Village Hall



Thank you to everyone who supported the hall in 2016.

To newcomers to the village we have a Toddlers group, youth club, whist group, art and craft club, two Tai Chi classes, WI, Silver band, Wednesday coffee morning where you can use our book and jigsaw library and a new club starting this year is a karate class if you are interested in any of these activities please contact me on 01296 712165 and I will pass your details on to the organisers.

We plan to carry on tidying up the hall and our new floor in the meeting room will soon be finished.

We are still waiting for an update on the outreach post office, we understand that the post office are interviewing applicants for the job.

Our hall is great for parties and meetings and we also hire out our tables and chairs.

*Gill Wood, booking clerk*

## Donation to FOCUS

Thank you to Great Horwood Parish Council for your very generous donation to Focus.

*Dean White*

*Have a Computer?*  
**NEED  
HELP?**

Help!!  
I've got  
a virus!

How  
do I do  
that?



I think  
I need  
some  
training

Why  
won't it  
work?

Contact Marius  
**01296 712 561**

**marius.stuart@btopenworld.com**

*for advice, support and training*



Established 1990

**Your Local  
Window and Conservatory  
Specialists  
Products made to suit in  
UPVC**

*From Design thru' to completion ...*

**01296 712151**

Email: [NandGwindows@aol.com](mailto:NandGwindows@aol.com)

*FENSA Registered*



now taking bookings for

**Valentines and Mothers Day**

1 Winslow Rd, Great Horwod, Milton Keynes  
Buckinghamshire MK17 0QN

☎ **01296 712556**

✉ [info@swaninngreathorwood.co.uk](mailto:info@swaninngreathorwood.co.uk)

📘 The Swan Inn Great Horwood

🌐 [www@swaninngreathorwood.co.uk](http://www@swaninngreathorwood.co.uk)



## **Great Horwood Silver Band**

The Band had a very busy Christmas as usual starting with the annual Carol Concert in the Village hall where we raised £200 for the Great Horwood and Singleborough Guides Group. We welcomed Band President Len Goodwin his wife Linda and Vice President Michael Brocklehurst to the Concert.

The Concert was followed by two full days and one evening at Tesco Buckingham.

The band played for Carols around the Christmas tree in Adstock which was well attended by Villagers. Verity Nicholson sang the first Carol with the band, a collection was made for Verity's Charity. In addition some small groups attended other functions. The band played for their usual tour around Great Horwood on Christmas Eve and Christmas morning. We thank everyone who contributed to our collections.

We have 14 engagements already booked for 2017.

The Band are delighted to announce that in 2016 we raised the magnificent sum of £1326 for local and National Charities. These included The North Bucks Downs Syndrome Group. Great Horwood and Singleborough Church Youth Club. The British Heart Foundation. Prostate Cancer UK. Diabetes UK. Great Horwood Village Hall. Great Horwood Guides Group and Great Horwood and Singleborough Focus Magazine.

The next band engagement will be the Youth Club Almost Valentines Day on **Saturday February 4th** in the **Great Horwood Village Hall** 3pm to 5pm Doors open at 2.30pm Tickets cost £7 from Monica Gilby 01296 711915. Proceeds will be divided equally between The Youth Club and Cancer Research UK. The band will be joined by members of the Youth Club, singing and other entertainment.

It is with great pleasure we welcome Mr Clive Keech as our new Musical Director. Clive began playing with New Bradwell Silver Band and has had many years experience of brass bands. Clive took up his duties on the 4th of January and we look forward to working with him.

The Bands annual Concert will be on **Saturday March 4th** in the Buckingham Community Centre 7.30pm. Tickets available on the door £7 and £5 concessions. There will be a raffle and refreshments.

100 Club winners for November

Emma Mainwaring £12

Pat Mould £8

Winners for December

Vicky Cook £50

Sharon Taylor £12

Linda Goodwin £8

If you would like to join the 100 Club at 10p each week please contact any band member

If you would like to keep up with what the band are doing please log onto our website for photos and news.

To book the band for your special occasion please contact Beryl on 01908 510809

*Beryl Lack*

**Web page** [www.greathorwoodband.com](http://www.greathorwoodband.com)



## **Local charity Medical Detection Dogs are looking for your help**

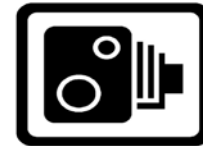
The Great Horwood based charity Medical Detection Dogs is looking for

socialisers for puppies, young and more mature dogs. Medical Detection Dogs places puppies or young dogs in family homes throughout their training, replacing the need for kennels.

It takes commitment and patience to nurture a healthy, happy, well trained dog and to provide the life skills required for its future working life, but providing a young dog with all the experiences it needs to become a Medical Alert Assistance Dog can be an enjoyable and rewarding experience for individuals and all the family.

Volunteer socialisers are a vital part of the Medical Detection Dogs team and help to give the puppies the very best start on their journey to become a "life saving" friend.

If you would like to find out more about this opportunity visit <https://www.medicaldetectiondogs.org.uk/volunteer-work/volunteer/> or phone Helen Bliss on 01296 655888.



### **DOES SPEEDING TRAFFIC THROUGH THE VILLAGE WORRY YOU?**

AS YET WE'VE BEEN UNABLE TO EMPLOY  
A CROSSING PATROL OFFICER TO KEEP  
OUR CHILDREN SAFE AT SCHOOL TIME

WE HAVE A MOVEABLE VEHICLE ACTIVATED SIGN  
THAT RECORDS DATA SO THAT WE KNOW  
WITHOUT DOUBT THERE IS A PROBLEM.

THE POLICE HAVE OUR DATA BUT FEEL IT'S TOO  
TRICKY TO CLOCK AND STOP OFFENDERS  
SAFELY IN THE VILLAGE.

DO YOU CONSIDER THIS AN IMPORTANT ISSUE  
THAT THE PARISH COUNCIL NEEDS TO ADDRESS?

### **THEN PLEASE HELP**

WE NEED VOLUNTEERS TO JOIN THE  
NEIGHBOURHOOD SPEED WATCH SCHEME

TRAINING IS AVAILABLE, ITS EASY TO DO,  
THE CAMERA IS SET UP THEN YOU CAN SIT  
COMFORTABLY IN YOUR VEHICLE AND READ YOUR  
BOOK, TWO PEOPLE AT A TIME ARE NEEDED.

PLEASE CONTACT

JANE HOLLAND 07484803910 OR 715704  
[Jane.holland.313@btinternet.com](mailto:Jane.holland.313@btinternet.com)

arts *Stowe*

Stowe  
Buckingham MK18 5EH  
Tickets: 01280 825710  
www.artsatstowe.co.uk

Saturday 11 February  
Michael Morpurgo's KING ARTHUR



COMING  
SOON



Thursday 2 March  
THE ROAD TO  
HUNTSVILLE



Wednesday 22 March  
HOLMES AND WATSON:  
THE FAREWELL TOUR

**C.T.MOWERS**

## Lawn Mower and Garden Machinery Service & Repairs

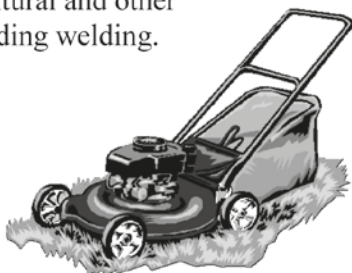
All makes and models of garden  
machinery undertaken.

(Please note, we do not carry out electrical repairs)

- Lawnmowers (including ride-ons)
- Strimmers, chainsaws,
- Garden Rotovators etc

Please enquire for agricultural and other  
machinery repairs - including welding.

Contact Chris at  
C.T.Mowers on:  
07976 980388



www.ctmowers.co.uk



Starting  
your  
own business?

Or need help  
with your existing  
business?

Do you need an  
accountant/tax  
adviser?

*Clear, down to earth financial advice for all  
personal and corporate accountancy  
requirements.*

Call for a free half hour consultation

T: 01296 738668

M: 07812 026346

[www.ajrandco.co.uk](http://www.ajrandco.co.uk)



Chartered  
Accountant  
& Business  
Advisor

**AJR  
& Co**



**JOHN COLLINS  
ELECTRICAL**

ELECTRICAL INSTALLATIONS  
ELECTRICAL APPLIANCE REPAIRS

ELECTRICAL INSTALLATIONS  
TO DOMESTIC, COMMERCIAL AND  
INDUSTRIAL PROPERTIES, ALL WORK  
CARRIED OUT TO PART P REGULATIONS

### REPAIRS TO:

**WASHING MACHINES, ELECTRIC  
COOKERS, DISHWASHERS, TUMBLE  
DRIERS, ELECTRIC SHOWERS,  
STORAGE HEATERS AND ELECTRIC  
HEATING SYSTEMS**

Tel: 01280 814909

Fax: 01280 823179



email: [john@johncollinselectrical.co.uk](mailto:john@johncollinselectrical.co.uk)

## Message from PCSO Wendy Taylor



### Get Safe Online

Using computers and similar devices to go online has made everyday activities such as shopping, banking, paying bills and keeping in touch fast and easy ... anytime, anywhere.

There are, however, a number of risks associated with going online – some general and some specific to the respective activities that you carry out.

There are a number of sensible and simple measures which you need to take in order to protect yourself against these risks, which include identity theft, criminals stealing your personal and financial data to defraud you or empty your bank account. The precautions are as simple as choosing safe passwords and ensuring you have adequate antivirus/antispyware installed, to learning how to distinguish between genuine and fraudulent websites and emails.

In researching this item I found so much information on the Thames Valley website so visit the crime prevention page and click on 'Cyber Crime' and then 'Protecting Yourself'. To reproduce all the information here would take pages of typing and Thames Valley Police has conveniently itemised each type of risk and the action to take to protect yourself. There is also a lot of advice on ID fraud in the same crime prevention section.

### Keeping passports safe

The UK passport is a valuable document, and if a lost passport ends up in the hands of a criminal, they may attempt to use it in a number of illegal activities, including money laundering, identity theft and gaining wrongful entry through border checks.

If you do find a passport either hand it into a police office or post it immediately, with a short note explaining where you found it, to: FREEPOST HM PASSPORT OFFICE.

Passports remain the property of the Crown at all times and, if found, should not be kept or destroyed. Please do not therefore attempt to return a found UK passport to its holder.

When a passport is reported as lost or stolen it is cancelled and is no longer a valid travel document. Cancelling the passport also helps to prevent it being used for fraudulent purposes while not in the possession of the passport holder.

If anyone mentions to you that they have lost their passport, please ensure they report the fact immediately at gov.uk

### Lloyds Bank customers should be on the lookout for a new sophisticated fraud that involves fraudsters sending fake bank letters.

The convincing letters being sent are a replica template from Lloyds Bank and include their logo, address and signature from a customer service representative.

The letter tells recipients that there have been some "unusual transactions" on their personal account and asks them to call a number highlighted in bold to confirm they are genuine. When victims call the number, an automated welcome message is played and the caller is asked to enter their card number, account number and sort code followed by their date of birth. Victims are then instructed to enter the first and last digit of their security number.

The fraud was spotted by the Daily Telegraph who was alerted to it by a reader who had three identical letters sent to an office address. On separate occasions the Daily Telegraph ran some tests using fake details and were passed to fraudsters who claimed to be from a Lloyds Bank contact centre. The bank has confirmed that the phone number and letters are fake. The letters are essentially a sophisticated phishing attempt and serves as a warning to consumers to question written correspondence from their banks.

If you are ever suspicious about correspondence from your bank you should call the customer serviced number on the back of their card. To report a fraud and cyber crime, call us on 0300 123 2040 or visit [http://www.actionfraud.police.uk/report\\_fraud](http://www.actionfraud.police.uk/report_fraud)

Wendy Taylor

4Beauty is a multi award winning salon based in Whitchurch, Buckinghamshire. Our aim is to treat each and every client as an individual and to meet their expectations every time they visit our salon.

Our Therapists are trained to the highest of standards and professionalism along with technical expertise required for some of our ultimate and advanced facial procedures.

We offer premium brand products and provide quality treatments that undoubtedly make us one, if not the best beauty salon in Buckinghamshire. These include:

- Decler & Guinot Facials
- Decler Body Treatments
- CND Spa Manicures & Pedicures
- CND Shellac Manicures & Pedicures
- CND Minx Pedicures
- Bio Sculpture Natural Nail Enhancements
- OPI Gel Colour Manicures
- Brazilian Waxing with Lycon Wax
- PhD Waxing
- Lash Perfect Individual EyeLash Extensions
- LVL Lift Volume and Length EyeLash Treatment
- Special Occasion Makeup with New CID Cosmetics
- Wedding Packages
- Mother to be Packages

Monday	11:00am - 6:00pm
Tuesday	9:00am - 8:00pm
Wednesday	9:00am - 6:00pm
Thursday	9:00am - 8:00pm
Friday	9:00am - 6:00pm
Saturday	9:00am - 6:00pm
Sunday	CLOSED

**4beauty**  
4Beauty LTD, 56 High Street,  
Whitchurch, Buckinghamshire,  
HP22 4JS  
T. 01296 640644  
[www.4-beauty.com](http://www.4-beauty.com)



# GREAT HORWOOD AND SINGLEBOROUGH CHURCH YOUTH CLUB



## “ALMOST VALENTINE’S AFTERNOON”

ON Saturday 4th February GHAS Youth Club and the Great Horwood Silver Band will be:-

PLAYING MUSIC  
SINGING AND  
SERVING A DELICIOUS TEA.  
FOR YOUR ENJOYMENT.

Please come and join us on 4th February at the Village Hall  
3pm - 5pm (doors open at 2.30) Tickets only £7 each.

All proceeds taken will be shared equally between  
the Youth Club and Cancer Research U.K

To book your place please ring  
Monica on 01296 711915 [mgilbey@fsmail.net](mailto:mgilbey@fsmail.net)

**Dick**  **Whittington**  
A fun-filled family pantomime  
by  
Derry French 



Thursday 2<sup>nd</sup> 7.30pm, £6.00  
Friday 3<sup>rd</sup> 7.30pm £8.00  
Saturday 4<sup>th</sup> 2.30pm £6.00 &  
7.30pm £8.00  
February 2017

Tickets from Divine Diva  
Ticket hotline: 07745 223365



[www.winslowplayers.co.uk](http://www.winslowplayers.co.uk)





## SPRING LITTER PICK Sunday 19th February

Meeting  
on the Green  
at 11am

Hot drinks and  
bickies as a thank  
you!



# JUMBLE SALE

Saturday 18th February 2017  
Great Horwood Village Hall

Bring your jumble from 09.30am until 12.30pm  
Sale starts at 1.30pm and finishes at 4pm

Real bargains,  
refreshments  
and a raffle!

All proceeds to Horwode Pece Management  
Committee Charitable Trust

All enquiries to Sarah Samways - 07756 645426

## GREAT HORWOOD PARISH COUNCIL VACANCY

Known as a Casual Vacancy (source of the title of the JK Rowling novel) Great Horwood Parish Council would very much like to hear from any resident willing to become a co-opted member of the Council.

If you care about the Community, like meeting people, have time, patience and a bit of energy, you are the person we need to fulfil this very important role. It isn't always easy to be a Councillor but it is absolutely essential to the running of the Parish.

Interested parties should contact the Clerk on clerk@greathorwoodpc.org.uk or telephone 01296 715829. An informal chat with a councillor can then be arranged so that interested parties can find out what is involved (ideally prior to co-optation at the PC Meeting in March).

**CAN YOU  
HELP?**

## PARISH PUMP

As Clerk to Great Horwood Parish Council, I have been asked to mention a few items that have been noted by residents.

- Poo in the Parish is not the nicest thing to talk about; however, to give plaudits where they are definitely due, dog walkers have been doing a **great job** keeping the village pavements clear. THANK YOU. Can we politely request that dog owners extend their good work to Pilch Lane and Little Horwood Road, beyond the village boundaries? (Sincere thanks to those who are already doing this). More and more residents, especially families, are using these roads for recreation. Inevitably, they have to use the grass verges to allow traffic to pass and, in doing so, run the gauntlet of standing (or falling) in poo - highly unpleasant for all concerned. Poo bins are available on both roads on re-entry to the village, so **please** take your dog's poo to the nearest bin). Dog poo sacks can be expensive but bio degradable nappy sacks costing approx. 1p each are available at supermarkets



- Under Devolution of Services, the Parish Council now has responsibility for not only for grass cutting in the village but for making sure that pavements are, as far as possible, not obstructed by greenery. Could we please ask residents with hedges adjacent to pavements to keep them trimmed to allow pedestrians to use them safely, especially the disabled and parents with buggies? Most residents are doing a great job but there are one or two hedges that are beginning to migrate to the middle of the pavement. It is amazing how seemingly innocuous growth can cause a very painful scratch, especially when it is on the eyeball.



- A lollipop lady or gentleman is urgently needed for the village. Can you help or do you know of someone who might? We would love to get our school crossing patrol operational. Everything else is ready to go. It is a paid position and training will be given. Please contact the Parish Clerk.



- The Parish Council would like to thank all those residents who are parking considerately throughout the village. We ask everyone to think of others when they park especially when parking adjacent to a pavement. Please do so in a way that allows pedestrians, prams and mobility scooters to pass in comfort. We add the usual request to leave the white lines free on the corner of Spring Lane for the safety of all residents. THANK YOU.

- At the time of writing, a plot on the Church Lane allotments has become available. If you are interested in renting the plot, please contact the Parish Clerk.

Mandy Cliffe, Parish Clerk  
clerk@greathorwoodpc.org  
01296 715829



# Horwood Hounds

Doggy Day Care & Boarding Services since 2005

## Edwina Daymond

Pet Nanny & Assured Breeder of Miniature Smooth Haired Dachshunds

2 High Street  
Great Horwood  
Bucks MK17 0QL

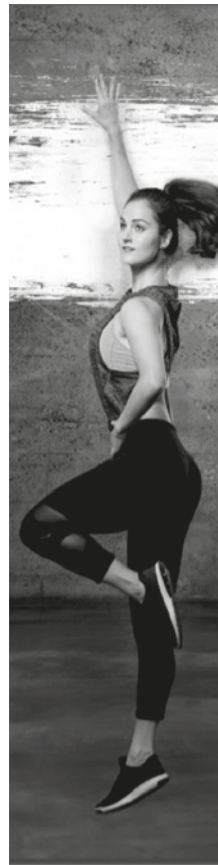
• 07881 558872  
• [www.horwoodhounds.co.uk](http://www.horwoodhounds.co.uk)  
• [horwoodhounds@btinternet.com](mailto:horwoodhounds@btinternet.com)

## J Clarke Roofing

07870 795964

- Tiling
- Slating
- Leadwork
- Repairs
- Old & New Roofs

The Old School House • Water Stratford Road • Finmere • MK18 4AT



WE RAISE THE BAR

## YOU RISE TO THE CHALLENGE

Furze Down School

Monday 7.30pm

Wednesday 7.30pm

St Laurence Room

Winslow

Friday 9.30am

Keri Donnellan - 07900 987230

[www.jazzercise.net/](http://www.jazzercise.net/)

[uk-aylesbury/winslow/](http://uk-aylesbury/winslow/)



## Helping Hands

The Home Care Specialists

Est. 1989

## Do you need a Helping Hand?

RECRUITING CARERS NOW!

If you are looking for an **alternative to residential care** or extra support for those everyday tasks that are becoming difficult for you or a loved one – **then we're here to help - from 30 minutes per week to Live-in Care.**

Our **Milton Keynes care team** has been providing award winning quality homecare since 1989 and can help with: personal care, house-keeping, help getting around or even to provide a break to an existing family member or care-giver.

To find out how we can help you, call: **01908 828 593** or visit: **[www.helpinghands.co.uk](http://www.helpinghands.co.uk)**







Great Horwood  
Parish Council

## Chairman's Monthly Report : Last Meeting – Monday 12 December 2016

Although there was no Parish Council meeting in January, the Council has continued to consider planning applications and to struggle with Transport for Bucks and Thames Valley Police over speeding and traffic issues.

The last Parish Council meeting was on 12 December. The main business was the approval of the 2017/2018 Budget. This included setting the precept for the coming year. The parish council precept is a tax charged on each property in the parish to fund the parish council. It is collected as a small part of the Council Tax. AVDC then make a payment to the parish council to fund the activities which the parish council undertakes for the benefit of the community. The Budget covers administrative overheads, maintenance (eg grass cutting and dog bins), Horwode Pece, road and street safety (eg street lighting, speed equipment), support for local groups and good causes (such as the Winslow & District Community Bus) and support for the Parish Plan development and contingencies. The Parish Council also needs to maintain a reasonable level of general reserve for unforeseen events as well as earmarked reserves to support specific aims within the developing Parish Plan.

To match the overall increase in expenditure that the Parish Council feels is appropriate, the precept income will have to increase. It was agreed to set the total precept at £28,590. The average Band D precept to support this budget would increase to under £65, a 12% increase.

This is still average for a parish of our size, and we need to be aware that in future there might be a cap on further increases. For the parish to thrive, there needs to be adequate investment through the Parish Precept and the Budget.

The Parish Council has agreed to make grants to local groups this year - to the School for benches and tables; to the Scouts for renovations at the Scout Hut; to the Football Club as a contribution towards increased security; and to the Winslow & District Community Bus. Formal presentations will be made at the February meeting of the Parish Council.

Looking ahead - a long way ahead - the Parish Council has agreed to participate in the 'Battle's Over' commemoration in November 2018 to mark the centenary of the signing of the Armistice in 1918. We shall be developing plans in the forthcoming months and hope that this can be something to involve everyone in the community. So watch this space as plans are developed.

Finally, on behalf of the Parish Council, I would like to take this opportunity to thank Patricia Rudkin for acting as village correspondent to the Buckingham Advertiser for many years. She has recently retired from this. We are grateful that she has ensured that news about Great Horwood and Singleborough has appeared regularly in the newspaper.

For a more comprehensive report of the Parish Council meeting please read the minutes published on the website <http://www.bucksvoice.net/greathorwoodpc/>. This website also has updates of items on its latest news page.

If you have any items that you would like to bring to the Council's attention at any time please contact the Clerk or any Councillor. We are always pleased to welcome residents to our monthly meeting during which there is always a public participation period. The next meeting is to be held at 7.30 pm on Monday 13 February 2017 in the Village Hall.

Mary Saunders  
Chairman, Great Horwood Parish Council  
[marysaundersghpc@outlook.com](mailto:marysaundersghpc@outlook.com)

### GREAT HORWOOD PARISH COUNCIL Useful Contact Details



Great Horwood  
Parish Council

#### Members of the Parish Council

Mary Saunders <i>Chairman</i> <a href="mailto:marysaundersghpc@outlook.com">marysaundersghpc@outlook.com</a>	01296 713610
John Gilbey <i>Vice-Chairman</i> <a href="mailto:john@gilbey98.freemove.co.uk">john@gilbey98.freemove.co.uk</a>	01296 711915
Angela Mayne <a href="mailto:angela.mayne@googlemail.com">angela.mayne@googlemail.com</a>	01296 715400
Jane Holland <a href="mailto:jane.holland.313@btinternet.com">jane.holland.313@btinternet.com</a>	01296 715704
John Huskinson <a href="mailto:john.huskinson@yahoo.com">john.huskinson@yahoo.com</a>	07984 524622
Nigel Heywood <a href="mailto:nheywood2@gmail.com">nheywood2@gmail.com</a>	01296 711558

#### Clerk to the Council

Mrs Amanda Cliffe  
[clerk@greathorwoodpc.org.uk](mailto:clerk@greathorwoodpc.org.uk)

Parish Council Website  
[www.bucksinfo.net/greathorwoodpc](http://www.bucksinfo.net/greathorwoodpc)

Great Horwood Village Hall 01296 712165  
Bookings Doctors Car Service 07704 140110

Winslow and District Community Bus 01296 715786  
Aylesbury Vale Dial-a-Ride 01296 330088

Community Police Officer  
PCSO Wendy Taylor Tel: 101  
[Winslowanddistrictnht@thamesvalley.pnn.police.uk](mailto:Winslowanddistrictnht@thamesvalley.pnn.police.uk)



### THE IRON LADY IRONING SERVICE 01908 504080

(Mobiles: 07733 120741 & 07713 215362)

#### Do you REALLY DISLIKE LAUNDRY & IRONING?

*If so, we have a service to suit you.*

A weeks washing? just a few shirts? or is it the entire package; washing, drying and ironing? You're not alone... At The Iron Lady we offer a service that's daily, weekly, fortnightly, monthly or even just when it gets too much!

*Make your life simpler & call us. Fast, friendly and reliable.*

Washing and /or Drying Service

Ironing Service Clothes Repair

Pick up or delivered to your door

[www.theironladyonline.co.uk](http://www.theironladyonline.co.uk) e: [theironladyunitz@aol.com](mailto:theironladyunitz@aol.com)

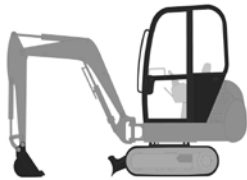
Drop off's  
Welcome



Unit 2 • Bacon House Farm • Warren Road • Little Horwood • Milton Keynes • MK17 0PS



# DIGGER DAVE



**ALL TYPES OF WORK Inc.**

**FOOTINGS, DRIVEWAYS, TREE STUMPS,  
DITCHING, TRENCHES, GARDEN CLEARANCE ETC.**

**07976 983444**

## Brookside Engineering

Individually hand crafted wrought ironwork and metalwork.

Side Gates  
Drive Gates  
Iron Railings  
Security Grilles  
Weather Vanes  
Fire Hoods  
Fire Baskets

Restoration and Repair

Please visit my website

[www.brookside-engineering.com](http://www.brookside-engineering.com)

01296 715059 / 07976 983444

Dave Spooner, Brookside Farm, Gt Horwood Rd Winslow, Bucks MK18 3LY

# DICKINS

AUCTIONEERS LTD

## ANTIQUE & FINE ART AUCTIONEERS

Monthly Auctions of Antiques &  
Fine Art

Quarterly Picture Auctions  
Sporting & Country Pursuits  
Auctions

General Auctions

Partial & Total House Clearances

Insurance, Probate and Family  
Division Valuations

The Claydon Saleroom, Calvert Rd.  
Middle Claydon, Buckingham.  
MK18 2EZ

Tel: 01296 714434 Fax: 01296 714492

[info@dickinsauctioneers.com](mailto:info@dickinsauctioneers.com)



**MARBLE ARTS**  
Natural Stone Specialists

established 1994

**Granite and Quartz  
Kitchen Worktops**

Template and installation  
in under 3 days

Tel Nigel : 01296 689301

E-mail : [info@marbleartsltd.co.uk](mailto:info@marbleartsltd.co.uk)



## K.J. WINDOWS & DOORS

UPVC WINDOWS & DOORS

CONSERVATORIES

FASCIA & SOFFITS

BI-FOLDING DOORS

ALL REPAIRS, INCLUDING  
MISTED & BROKEN UNITS

ALL WORK GUARANTEED

**CALL KEITH 07539 367 200**

# Winslow Community Bus

www.winslowbus.com

wdcbenquiries@btconnect.com Tel: 01296 715786



Everyone is eligible to come on the bus, we pick up near to your house, please ring Sue for more information.  
\*Denotes bus pass accepted.

**EVERY Friday & Saturday** - Aylesbury Bus - Winslow, Horwoods, Mursley, Swanbourne. £4.00 return, free with bus pass. Ring for details.

**EVERY Wednesday** - Villages into Winslow for Market Day - Claydons, Horwoods, Swanbourne, Mursley, Nash, Whaddon £3.00 return, free with bus pass. Ring for details.

- Thursday 2nd February - Visit Welford Park, my favourite snowdrop place!! Magnificent! £14.00 incl entrance.  
Tuesday 7th February - Buckingham Bus\* Town and Tesco or just Tesco! Ring to book.  
Thursday 9th February - Westcroft Bus\* Morrison's Aldi Boots B&M etc  
Tuesday 14th February - Local lunch at The Bell Inn Beachampton. £3.50 travel.  
Thursday 23rd February - Westcroft Bus\* Morrison's Aldi Boots B&M etc  
Monday 27th February - Asda Bletchley, M&S, New Look, Next, Primark £4.00  
Thursday 2nd March - Enjoy a carvery for only £4.69 at The Peartree Bridge Inn MK, set by the canal/ £4.00 travel.  
Tuesday 7th March - Buckingham Bus\* - an hour in town- an hour at Tesco. Ring to book. Door to door.  
Thursday 9th March - Westcroft Bus\* Morrison's Aldi Boots B&M etc.  
Picks up Winslow, Horwoods, Nash, Whaddon. Ring to book.  
Thursday 16th March - Join us for lunch at The Red Lion Wendlebury. 2 courses £11.95, 3 courses £14.95. Travel £5.00.  
Tuesday 21st March - Frosts Garden Centre - Spring is coming! Travel £5.00  
Thursday 23rd March - Westcroft Bus\* As above!  
Monday 27th March - Asda Bletchley, M&S, New Look, Next, Primark £4.00

## **NEW Milton Keynes THEATRE PROGRAMME OUT - Book now!**

All prices are for tickets in Band A price range (Circle or stalls) and travel.

Performances start 2.30pm unless otherwise stated. Door to door service!

- Wed 1st Feb - Not Dead Enough -thrilling new stage play - Circle A&B £22.00  
Thursday 16th Feb - The Red Shoes - Matthew Bourne's magical new adaptation. Upper Circle B&D £23.00  
Wed 22nd Feb - La Strada -a new musical adaptation of 1957 film. Circle Row C £22.00 **BOOK BY 16/1**  
Wed 1st March - Funny Girl - 'exhilarating' 'phenomenal' musical -Circle F&G £33.50 **BOOK BY 23/1**  
Wed 15th March - The Play that Goes Wrong - smash hit comedy - Circle D/E £23.50 **BOOK BY 6/2**  
Wed 22nd March - 7.15pm La Boheme - Stalls Row P - £50.50. **BOOK BY 13/2**  
Wed 29th March - Shirley Valentine - Willy Russell's heart-warming masterpiece £22.50 **BOOK BY 20/2**  
Sunday 9th April - 2.30pm Lord of the Dance - Dangerous Games. Directed by Michael Flatley.  
Stalls Row N - £46.00 **BOOK BY 20/2**  
Thursday 20th April - Casanova -Northern Ballet Circle J £21.50 **BOOK BY 20/3**  
Wed 10th May - Mamma Mia! Abba-solutely fantastic! Circle Row A&B. £49.00. **BOOK BY 20/3**  
Wed 24th May - Evita - A classic is reborn - stunning musical. Stalls P/Q £37.00 **BOOK BY 17/4**  
Thursday 8th June - Billy Elliot -the musical -funny, uplifting, spectacular. Circle M&N £34.00 **BOOK BY 27/3**  
Thursday 15th June - Billy Elliot -the musical -funny, uplifting, spectacular.Circle Row C £48.00  
Wed 12th July 2pm - Jane Eyre - 'theatre at its most imaginative' a collaboration between National Theatre & Bristol Old Vic. Stalls Row G £24.50 **BOOK BY 27/2**  
Wed 19th July - Wonderland - enchanting musical adaptation of Alice - Circle C/D £34.50 **BOOK BY 22/5**  
Wed 26th July - Judgement in Stone - Roy Marsden, Sophie Ward, Shirley Ann Field, - a new thriller from Ruth Rendell Circle KK £24.50 **BOOK BY 5/6**  
Wed 9th August - La Cage aux Folles - new production of award winning musical  
Stalls JJ/KK/MM £37.00 **BOOK BY 12/7**

## **Winslow and District Community Bus Volunteer Drivers required!**

Do you enjoy driving and meeting people? Are you aged between 25 And 70? Have you a few hours to spare on an occasional or regular basis? Then please consider joining our friendly team of volunteer drivers. We can give you full training and out of pocket expenses. Trips can vary from short local runs to longer excursions; we also run regular bus routes.

To find out more, please ring Sue on  
01296 715786 or  
e-mail wdcbenquiries@btconnect.com

## **HOLLAND ENGINEERING SERVICES**



**MOT TEST STATION**  
Motorcycle servicing & repairs  
Quads & Lawnmowers  
Parts and tyres  
Mig/Tig Welding

Salden Crabtree Farm  
Whaddon Road MURSLEY Milton Keynes MK17 0PR  
Tel: 01296 728693  
Mobile: 07879 427205

**Trevor Evans**  
**'Your Personal IT Man'**

PC Support, Secure Wireless Broadband and Home  
Networks,  
Anti-Virus and Anti-Spyware Support

I can help you solve your IT problems and requirements

A Friendly and Professional Service

Call or Email me for a No-obligation Chat

☎ 01296-714413

✉ [trevor@trevorevans.me.uk](mailto:trevor@trevorevans.me.uk)

## **FUN WAY DOG TRAINING** **at Little Horwood**

Bespoke puppy training in your own home  
for puppies going through vaccinations.

Classes for puppies, classes for adult dogs.

Follow-on classes always available.

Contact Evelyn on 01908 502272.

Please visit the web-site  
or telephone me for further details

[www.funwaydogtraining.co.uk](http://www.funwaydogtraining.co.uk)

# **MICK WOOD**



## Heating Services Ltd

For service repair & installation  
of

**OIL FIRED BOILERS**

**OIL FIRED COOKERS**

**OIL TANKS**

\* Prompt personal attention

\*New boiler installations

\*Oil tanks supplied & fitted

\*Oil tank gauges fitted



Registered  
Technician

Tel: 01296 730 670

Mobile: 07979 645 472

## **Concerned about Security?** **Have you thought about CCTV?**



We can install from 1 to several cameras to view on your Tablet, Smart Phone, Computer, TV or any combination of these devices. Just think, you could be on holiday and still be able to see who is at your front door, breaking into your shed or at the back of your shop.

All installations conform to Data Protection Laws.

Call us on

**01296 712113**

For a no obligation estimate

**cai**  
Trade Association for  
Content Delivery  
CAI Plus Membership No. C0718

**City & Guilds** qualified  
3456-1

**cai**  
TVconnectedhome

TV and Satellite Ltd  
43 Spring Lane  
Great Horwood  
MK17 0QP  
[www.tvandsatellite.co.uk](http://www.tvandsatellite.co.uk)  
[info@tvandsatellite.co.uk](mailto:info@tvandsatellite.co.uk)



**Don't forget we also do Aerials and Satellite TV**



# Precise PVC-u Building Supplies Ltd

12a Romar Court, Bletchley, Milton Keynes, MK1 1RH  
 Sales - 01908 270994 sales@preciseupvc.co.uk  
 Accounts - 01908 824411 accounts@preciseupvc.co.uk  
[www.precisebuildingplastics.com](http://www.precisebuildingplastics.com)



## Building Plastics

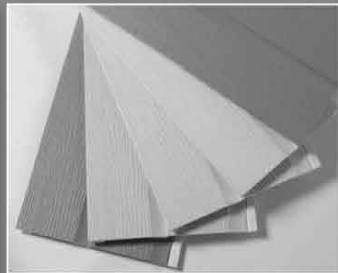
We supply the highest quality building plastics for window fitters, building contractors and the general public. We supply a wide range of building plastics to cater for all aspects of the building trade

## Roofline Products

We supply a wide range of roofline products from all the leading manufacturers. We offer all our roofline products to tradesmen and individuals at highly competitive prices

## Underground Drainage

We supply all the underground drainage products that you may require. We pride ourselves on providing the best quality underground soil and waste PVC-u products at low rates



**Guaranteed next day delivery on stock items to our local area for orders over £50**

**For SALES call  
Tony or Pete**

**Trade Counter 01908 270 994  
[sales@preciseupvc.co.uk](mailto:sales@preciseupvc.co.uk)  
[www.precisebuildingplastics.com](http://www.precisebuildingplastics.com)**



**Editor:** Helen Grimditch, David Brazier editor@ghfocus.com  
**Typing & Layout:** David Brazier, Andy Gibbs.  
**Printing:** Harlequin Press Ltd.  
**Copy deadline:** 15th of month before publication.

**Distribution:** June Margerrison, Debbie Armitage, Ann Biggins, Judy Blundell, Di Cook, Valerie Hancock, Edwina Daymond, Duncan Hogston, Cathy Holland, Ian Lamberton, Gary Lee, Lyn Mayger, Gill Wood, Sandra Sanderson.

Available online at: [www.bucksinfo.net/greathorwoodpc/](http://www.bucksinfo.net/greathorwoodpc/)

# MAD MARCH HARE RUN

**SUNDAY 5th MARCH 2017 AT 12.00 noon  
5K ROAD RUN**

**An undulating road course closed for the duration of the event  
MEDAL TO ALL FINISHERS**

**Prizes:**

1st Male & Female  
1st age 16 and under M&F  
1st age 12 and under M&F  
1st age 9 and under M&F  
Fastest Villager!!!!

**Venue:**

Registration at Great Horwood School from 10.45am

**Numbers:**

Issued on the day



**SPONSORED BY:**

&



**HOT & COLD FOOD AND DRINKS AVAILABLE**

**Entry Fees (in advance):**

£6.00 Adults  
£3.00 Age 16 and under

**Entry on the day:**

£7.50 Adults  
£3.50 Age 16 and under  
Under 4's free

**Closing date: 1st March 2017**

<b>Surname</b>	<input type="text"/>	<input type="text"/>	<input type="text"/>	<b>M</b>
<b>Forename</b>	<input type="text"/>	<input type="text"/>	<input type="text"/>	<b>F</b>
<b>Address</b>	<input type="text"/>			<b>age on</b>
<b>Post code</b>	<b>Telephone</b>	<b>Email</b>		<b>the day</b>
<input type="text"/>	<input type="text"/>	<input type="text"/>		

I declare that I enter this event entirely at my own risk. The organisers shall not be held responsible for any injury, loss or damage as a consequence of my participation. I understand that my entry is subject to the organisers discretion and that after acceptance and in the event of cancellation, the entry fee is not refundable

Entrants Signature : \_\_\_\_\_

**Return with fee to :** Sheila Landymore, 5 Townsend Cottages, Great Horwood, Bucks, MK17 0QF  
(tel: 01296 711627)

**Cheques payable to:** Great Horwood School PTA **Closing Date :** 1.3.2017