



*We wish all our readers a Merry Christmas and a healthy, Happy New Year*

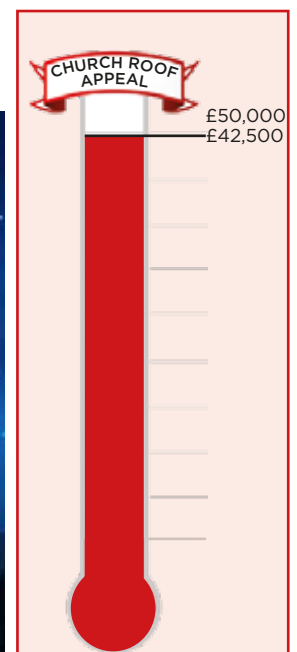
I think last Christmas was in some ways my personal low point of the pandemic. Yes, it was good that I was able to go to church and celebrate the birth of Our Saviour but coming home and sitting down at the kitchen table to steak and chips, just the two of us, felt pretty awful. However much I tried to reflect on the Christmas story, on the fact that Mary gave birth to Jesus far from home, it just didn't feel right. It didn't feel right because in some senses it wasn't right. Just as it wasn't right - let's not over romanticise the Christmas story - that Mary gave birth far from home and far from family, it wasn't right that we, all of us, celebrated Christmas in lockdown or isolation. Just to be clear when I say 'right' I am not making a political point nor am I critiquing the government but using the word emotively, perhaps even spiritually.

So, here's the point. The Gospels are the story of how Jesus came into the world to right wrongs and the Christmas story is the opening chapter. It is through the birth of Jesus that God relates to humanity, incorporating our stories into His story. God, however we feel can you imagine anything more tyrannical and unloving than a God whose reality is contingent on our Feelings, is in reality present to us at all times. Jesus is God's Christmas present.

This year it seems as though we will be able to spend Christmas with our loved ones. A wrong in some ways has been made right. For this we should give thanks and praise, and one of the ways we can do this is by coming to church, hearing, and participating in the Christmas story as if for the first time.

I hope you have a wonderful and very happy Christmas.

*Rev'd Andrew Lightbown*



### Light up the tower of St James

If you wish to sponsor the tower lights for that special occasion, please help us by using this form for your request.

I would like to sponsor the lights on the following date(s):

Date:

Commemorating

**The cost is just £5 per night.**

Cheques payable to: Great Horwood PCC.

Please send to Ian Lamberton

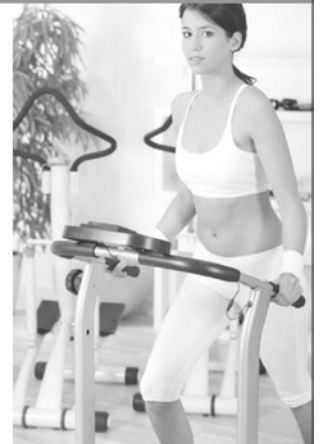
3 The Green, Great Horwood MK17 ORH.

Tel: 01296 715968

## HomeGym Equipment available for hire



- Treadmills
- Cross Trainers
- Bikes
- Rowing Machines
- and much more



Refer a friend for a weeks **FREE HIRE**

**Call 0800 043 2148**

[enquiries@homegymuk.com](mailto:enquiries@homegymuk.com)

[www.homegymuk.com](http://www.homegymuk.com)

**Trevor Evans**

**'Your Personal IT Man'**

PC Support, Secure Wireless Broadband and Home Networks,  
Anti-Virus and Anti-Spyware Support

I can help you solve your IT problems and requirements

A Friendly and Professional Service

Call or Email me for a No-obligation Chat

☎ 01296-714413

✉ [trevor@trevorevans.me.uk](mailto:trevor@trevorevans.me.uk)

Great Horwood  
Church of England School PTFA

## Christmas Fete

Friday 3<sup>rd</sup> December 2021.  
2.30pm - 4.30pm  
Great Horwood School

Everyone Welcome. Free entry.  
External stalls. Handmade gifts. Christmas crafts. Games.  
Tombola. Face painting. Bake sale. Refreshments... and more.

**Parentkind**  
Member Association

## Shaun Guard TV & WIFI SERVICES

- Aerials - repaired & supplied and poor reception solved
- Satellite - Sky Q dish upgrades, discreet dish installation
- Internet - blackspots cured, data cables to your TVs
- TVs - hung on your wall or set up and tuned
- CCTV & Door Entry - domestic installations

**OXFORD AERIALS**  
[www.oxfordaerials.co.uk](http://www.oxfordaerials.co.uk)  
**Call Bicester 01869 879111**

# Church Times

Rev Andrew Lightbown  
e-mail [alightbown@hotmail.co.uk](mailto:alightbown@hotmail.co.uk) phone 01296 712564  
[www.winslowbenefice.org.uk](http://www.winslowbenefice.org.uk)

St James' Services for December			Sidesmen	Readers	Intercessions
5th Dec	11.00am	Holy Communion	J Margerrison	R Margerrison	J Margerrison
12th Dec	11.00am	Come and Praise	P Moyles	S Bayliss	J Brigden
19th Dec	6.00pm	Nine Lessons & Carols	S Brazier	-	-
24th Dec	4.00pm	Christingle	D Brazier	-	-
24th Dec	11.30pm	Midnight Mass	I Lamberton	R Margerrison	J Margerrison
25th Dec	10.30am	Family Communion	D Brazier	S Brazier	D Brazier
26th Dec	9.30am	Benefice Service, St Laurence, Winslow			
2nd Jan	9.30am	Benefice Service, St Laurence, Winslow			
9th Jan	11.00am	Come and Praise	P Moyles	S Bayliss	J Brigden
16th Jan	11.00am	Holy Communion	D Brazier	S Brazier	D Brazier
23rd Jan	11.00am	Come and Share	J Margerrison	R Margerrison	J Margerrison
30th Jan	11.00am	Holy Communion	I Lamberton	I Lamberton	S Brazier

**Church Key** - December - David Moore - 713281

Please note there will be Benefice services on 26th December and 2nd January taking place at St Laurence Church, Winslow at 9.30am. All welcome. Our first service at St James' in January will take place on Sunday 9th January at the usual time of 11.00am.

## ANDREW LIGHTBROWN

Andrew has served the benefice since the end of June 2015, but the time has now come for Andrew to move on to a very different role.

The Bishop of Monmouth, the Right Rev'd Cherry Vann, has invited Andrew to become Canon Residentiary at St. Woolos Cathedral in Newport and Andrew has accepted. Andrew's

new ministry will therefore be in the Church in Wales. Andrew's last Sunday in the benefice will be the 30th January 2022.

Andrew and Sallyanne would like to stress just how much they have enjoyed living in the benefice and thank you for your support, friendship, and prayers.

## CHRISTMAS EVENTS AT ST JAMES'

Saturday 4th December, 10am - 1pm

Please see the back page of Focus. All welcome.

## CHURCH LIGHTING

The Church was lit on October 22nd for the Birthday of Eve Blane and will also be lit on December 8th for Lewis Blane.

We are very grateful to Mr & Mrs Bennet Coles for sponsoring the lighting of the Tower for the month of December.

## THE REC

May I politely remind a few select dog owners/walkers, to dispose of their dogs' poo in the designated dog poo bin at the entrance of the Rec. We have had several people contact us to say there is an increase in poo being left on the ground. Whilst the Play equipment may not be being used as much at this time of year, the Rec itself is a very well used Open Space, so please, no excuses, the poo belongs in the bin.

*Cathy Holland, Rec Committee*

## NOTICES

It saddens us to think that there are still some people that think it is ok for their dogs to foul the graveyards. Please respect the dead, keep your dogs on a lead and if you walk through, and if they foul, pick it up and take it home or use one of the many dog bins provided around the village.

*Liz & Phil Whitehall*

## COFFEE MORNING IS BACK

Every Wednesday from December. Come and have a coffee, biscuit and a chat. 9.30am till 11am, while getting your postal items.

Anybody that can help out on a rota basis please contact me on 01296 713387.

*Lynda Sirett*

To advertise or submit articles email:  
[editor@ghfocus.com](mailto:editor@ghfocus.com)

BY 15th MONTH



**RLR THERAPY**

**CLINICAL PILATES CLASSES**  
**Padbury Village hall**  
**MATWORK**  
 Wed @ 9.30am  
**OLDER ADULT**  
 Wed @ 10.45am  
 Thurs @ 9.30am  
**CHAIR BASED**  
 Thurs @ 10.45am

**Ruth Reid APPI**  
**07736 438443**  
**info@rlr-therapy.com**  
**www.rlr-therapy.com**  
**FaceBook RLR Therapy @rlrtherapy**

**HOLLAND ENGINEERING SERVICES**



**MOT TEST STATION**  
**Motorcycle servicing & repairs**  
**Quads & Lawnmowers**  
**Parts and tyres**  
**Mig/Tig Welding**

Salden Crabtree Farm  
 Whaddon Road MURSLEY Milton Keynes MK17 0PR  
**Tel: 01296 728693**  
**Mobile: 07879 427205**

**Piano Lessons**

PIANO TEACHER  
 Why not expand your mind and interest in music with a fully qualified teacher of over 30 years experience teaching youngsters and adults for fun and exams.

Call: Geraldine 07890 268387  
 email:gerryrb@btinternet.com




5 Star rating \*\*\*\*\*

**Greenway Dog Walking**

DAYCARE AND BOARDING WITHIN THE FAMILY HOME  
 GROUP OR INDIVIDUAL WALKS, POP-INS  
 QUALIFIED CANINE 1ST AID AND EMERGENCY CARE  
 CPD CANINE BODY LANGUAGE  
 FULLY INSURED AND LICENSED LC-201905 37236  
 BUCKS CC

FIND US ON FACEBOOK  
 PLEASE CALL LOUISE FOR ANY ENQUIRIES  
 07889658215  
 BASED IN GREAT HORWOOD



**MICK WOOD** 

Heating Services Ltd

**SERVICE, REPAIR & INSTALL**  
**OIL FIRED BOILERS**

We are Grant G1 & Worcester AI approved boiler installers who are able to offer longer warranties at no extra cost to you.

All installations are to Oftecregulations.

**OIL FIRED COOKERS**  
 (Service & breakdown only)

- \* Prompt personal attention
- \* Oil tank gauges fitted
- \* Power flushes



Registered Technician

**Tel: 01296 730 670**  
**Mobile: 07979 645 472**

## GREAT HORWOOD VILLAGE HALL

I am pleased to say that the Hall has been used for a craft fair and childrens party with further bookings in the pipeline for the New Year.

We are pleased to welcome Mr John Hammond as our new caretaker and I am sure he will continue to maintain the high standard set by Claire and Kathy.

For general enquiries, hall availability and bookings please contact Ian Lamberton by phone on 01296 715968 or email [ianlamberton@aol.com](mailto:ianlamberton@aol.com)

## ART & CRAFT GROUP

We are up and running every Friday, in the Village Hall, 9.30am to noon, painting, sewing, knitting, paper-crafting and more. We bring our own materials, coffee etc., wears masks when not seated and social distance.

Please come along and meet our informal group. Your first morning is FREE.

*Liz Nicholls (tel: 715331)*

## SOUNDS IN THE 60S (AND 50S) SUNDAY SERVICE RINGING

The Buckingham Advertiser and North Bucks Free Press announced, on Saturday 22nd July 1950, 'Bells Silence Broken' following the re-dedication of the new bell installation by the then bishop of Buckingham Rt. Rev R.M.Hay. The work had been carried out by Mears and Stainbank at the Whitechapel Bell Foundry, London. Great Horwood's bells were in action again.

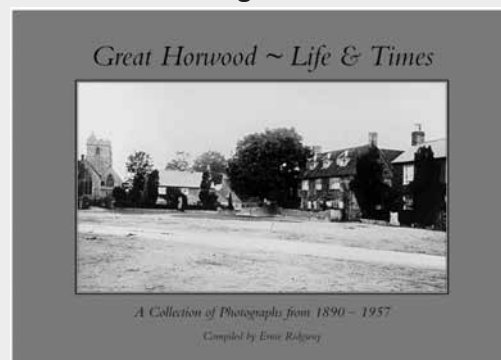
There were Morning and Evening prayer services weekly so two sessions of ringing on Sundays. Typically the ringers assembled just after 10am for an 11am service. Ralph Sirett, George and Richard Edmans, Ken and Mollie Moore, Maurice Jameison and Eric Barrs all lived along Little Horwood road, Trevor Emery, from the Post office and Cannon C.E. (Charlie) Last the rector at that time were among the ringers in the late 50s early 60s. Charlie wore his black cassock in readiness to take the services, being first down the stairs. Entry to the Church was via the West door, the ringers had a key. In those times there was no kitchen or wooden screen, in place of the screen was a pair of heavy curtains, there was a wicker-work 'invalid' three wheel bath chair stored here and the 'Charities' details hung on the north wall.

Up the thirty two steps they went, the first duty was to wind the clock using a two handed crank. To access the winding bobbins it was necessary

## GREAT HORWOOD- LIFE & TIMES

A limited number of copies are available of this wonderful booklet by Ernie Ridgeway, which was reprinted in 2020 with updates from Richard Edmunds. Great Horwood Life & Times is a pictorial history of life in our village from 1890-1957. At just £7.50 this is a fascinating look back at life in Great Horwood for newcomers or anyone who has misplaced their original copy.

Contact Russell Margerrison 01296-714554.



to stand on a purpose made set of steps. There were two weights one for the going and one for the hour chimes, it was heavy work to raise these, a weekly task. The bells were then 'rung up' in peal and general method ringing took place till about 10:50. If there was evening ringing the bells were left 'up' and the ringers went down stairs while one of them stayed behind to ring the 'Sermon' bell for a couple of minutes. In the event of no Evensong the bells were pealed down. Down stairs the small Sunctus bell was chimed and invariable Annie Elms would be seen coming in to play the organ. Those staying to service disappeared through the curtains, those not, went out via the door and closed it quietly behind them.

Evening ringing began at around 5:15 for a 6pm service. The bells were already 'up', sometimes ringing would continue without a break till 5:50 when the bells were rung down.

Fast forward sixty or so years and the bells are still there and serviceable although the fittings are showing their age. The art of full circle ringing is unique to this country and needs to be preserved for the future. We are always looking for ringers to join us, so if you have already learned or have an interest in what goes on please come along on Monday evening at 7:30 or give me a ring (no pun intended) on 713281. *David Moore*



# Arthur's

small tree work & hedge  
trimming services

**07342 181713**

arthursgardenservices@gmail.com

Qualified arborist  
Public Liability Insured

## The Lavender Workout: for mind and body.

Stretch, strengthen, tone and relax with exercises derived  
from Fitness Yoga, Tai Chi and Pilates.

Returning and new exercisers  
of all ages and fitness levels welcome.

Great Horwood Village Hall  
Thursdays 10.00 am - 11.00 am

Re-starting 5/8/21  
4 weeks through August £34

Pre booking essential. Limited spaces.  
Following all current Covid-19 guidelines.

Please contact Sandra Pratt AFAA, AFOGB, Fitpro.

07775 428594

Email: sandrapratt45@yahoo.co.uk



Established 1990

Your Local  
Window and Conservatory  
Specialists  
Products made to suit in  
UPVC

*From Design thru' to completion ...*

**01296 712151**

Email: NandGwindows@aol.com

*FENSA Registered*



MOORESPARKS  
ELECTRICAL



07708 531 227 / 01296 708 683



mooresparks@hotmail.com



www.facebook.com/mooresparkselectrical



@mooresparkselectrical

- FREE QUOTATIONS
- DOMESTIC & COMMERCIAL
- LIGHTING & POWER
- FAULT FINDING
- REWIRES
- CONSUMER UNITS
- TESTING, INSPECTION & CERTIFICATION



## GREAT HORWOOD SILVER BAND

### BREAKING NEWS!

The annual Great Horwood Silver Band Christmas Concert, which is on Sunday 12th December at 3.00pm will this year be held in St James Church, Great Horwood.

The decision has been made to hold the concert in the Church this year due to the continuing COVID guidelines the Band has to follow with regards to distancing etc.

We would ask that those attending the concert wear masks when moving around the Church, but these can be removed when seated and to also bear in mind people's choices regarding distancing whilst seated as we will not be restricting the number of people who can attend the concert.

There will be a raffle and a collection will be made, but no refreshments will be available.

There are toilet facilities within the Church.

Following a busy November where we took part in four Remembrance services at Preston Bissett, Whitchurch, Winslow and Great Horwood, Vicki Cook representing the Band at the Great Horwood Service, we are now in the Christmas period which we are excited about after not being able to do anything in 2020.

We are looking forward to taking part in a Christmas concert at Great Horwood School involving the talented children from the school that have been learning to play brass and other instruments since September.

We are intending to revive the tradition of playing around the village on Christmas Eve following our enforced break last year and are

looking for volunteers to come forward to help with the door-to-door collection we carry out. Please contact us on the details below or speak to any Band member if you are interested and available. We would be very grateful for your time and help.

Dates for your diary:

**Sunday 5th December** - Christmas Concert with Great Horwood School - Great Horwood School 2.00pm

**Sunday 12th December** - Christmas Concert - St James Church, Great Horwood - 3.00pm

**Tuesday 14th December** - Carols around the Christmas Tree - Adstock

**Friday 17th December** - Carols on the Green - Little Horwood - 7.00pm

**Tuesday 21st December** - Carols outside Tesco's - Buckingham

**Friday 24th December** - Carols around the village - Great Horwood

**Saturday 25th December** - Christmas morning wake up - Great Horwood

We look forward to seeing many familiar faces and hopefully some new ones at our events over the coming months.

We are still open to new players of any age or experience to come along and see if brass banding is something you would like to be involved in, so please contact us if you would like to come along to meet us and have a go.

Contact details:

*Email: [ghsbsecretary@gmail.com](mailto:ghsbsecretary@gmail.com)*

*Website: [www.greathorwoodand.com](http://www.greathorwoodand.com)*

*Or please visit our Facebook page*

## WINSLOW AND DISTRICT ART SOCIETY

Our weekly meetings continue to be held in Winslow every Thursday morning and Padbury every Tuesday morning. Anyone over age 16 with an interest in visual arts is eligible to become a member subject to a small subscription. We are a friendly and helpful group and anyone who is interested in becoming a member can find more details on our website [www.winslowart.org.uk](http://www.winslowart.org.uk)

Demonstrations in a range of media are normally held at Winslow Bowls Club on the last Thursday of each month. Entry is from 7.00 pm for a 7.30 start. Details are:

**27 January** - Elizabeth Baldin - Watercolour and acrylics inks. Farmyard animals

**24 February** - Keith Hornblower - Watercolour, Venetian or Thames scene

**31 March** - Heather Miller - Acrylics

**28 April** - Tony Jackson - Pastels, still life

**26 May** - Melissa Wishart - Oil, seascapes

**30 June** - Stanley Hurr - Watercolour, flowers

These are enjoyable and informative evenings and last about two hours with a break for tea and biscuits. Non members are welcome to attend and entry will cost £5.00

In early November we held our first public exhibition for two years. It was a great success with over 150 pictures on show along with craft stalls and live demonstrations. Thank you to everyone who visited, our next exhibition will be in May 2022.

Our new Facebook facility is now up and running so please visit us to see what's going on.

If you are interested in more information please look at our website [www.winslowart.org.uk](http://www.winslowart.org.uk) or contact:

Chair: Maureen Barnes 01280 815691

Secretary: John Beckerleg 01280 816932

Treasurer: Jackie Chambers 01296 713607



WHERE FITNESS AND FUN

*Come to Party!*



In Person and Online Classes

Full Schedule and Information

[www.jazzercisebbh.com](http://www.jazzercisebbh.com)

To book your spot, contact Keri

07900 987230 [jazzercise1@hotmail.co.uk](mailto:jazzercise1@hotmail.co.uk)



Do more.  
Learn more.  
Be more.

Put your skills to use, learn new ones, and contribute to an amazing life-experience for you and your local community.

Volunteering is easier than you think. With full support and training, you can volunteer on a flexible basis.

Put your skills to use, learn new ones, and contribute to an amazing life-experience for you and your local community.

Volunteering is easier than you think. With full support and training, you can volunteer on a flexible basis.

[scouts.org.uk/join](http://scouts.org.uk/join)

#SkillsForLife

Copyright 2018 The Scout Association Registered Charity numbers 306101/SC038437



**Scouts**

1st Great Horwood Scout Group

**OPENING HOURS**  
Please check our website for up to date opening hours



**TWIGS NURSERIES**  
Windy Ridge, Thornborough, Buckingham, MK18 2DZ  
[twignurseries@gmail.com](mailto:twignurseries@gmail.com)



**PREMIUM CHRISTMAS TREES AVAILABLE THROUGHOUT DECEMBER**

**HAND MADE HOLLY WREATHS**

**GIFTS AND DECORATIONS FROM LOCAL MAKERS**

**COFFEE, TEA, HOT CHOCOLATE AND CAKES**

**POT GROWN CHRISTMAS TREES**

**INDOOR PLANTS AND POTS**

**FAIRTRADE GIFTS AND ORNAMENTS**





## GREAT HORWOOD FIELD PATHS

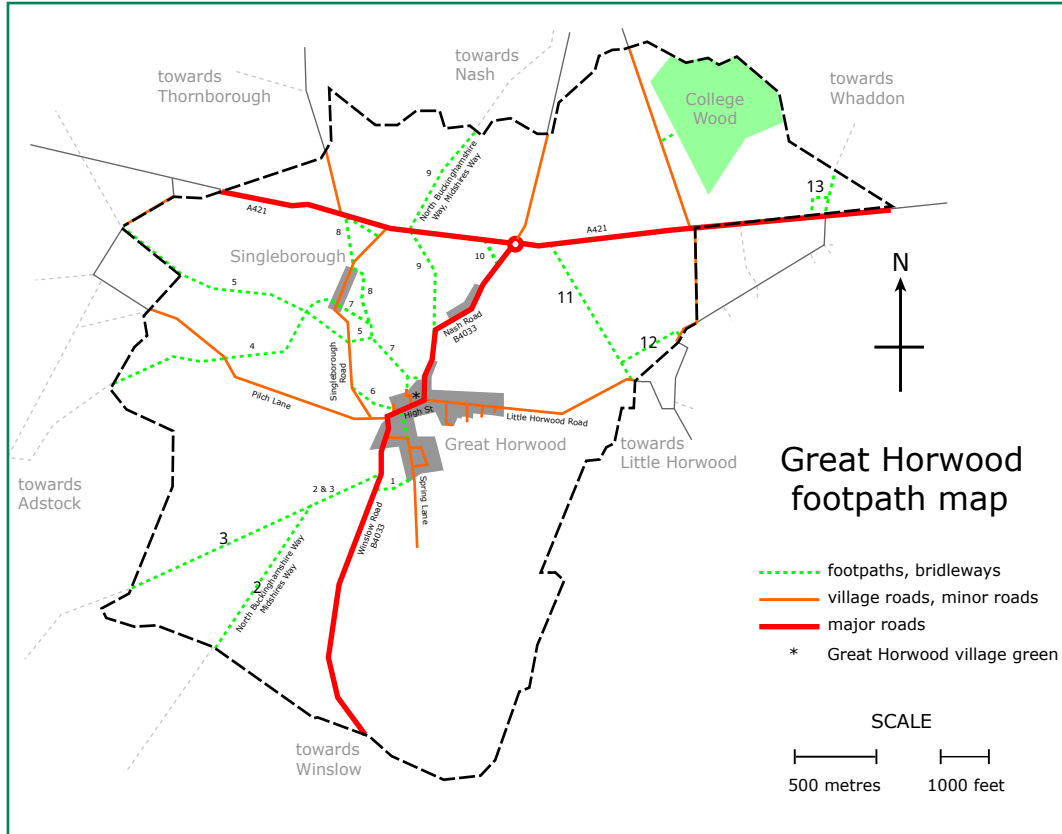
Untill recently, Rob Deuchar, of Singleborough, has been looking after the footpaths in the parish of Great Horwood and Singleborough. Rob has done sterling work these last few years, improving paths and having many stiles replaced with kissing gates. Rob has sadly died. He is missed.

I have taken over Rob's work; and have now risen to the giddy heights of 'Footpath Monitor'. The footpaths I look after would better, perhaps, be called field paths - as all of them, except the alley, are that. Here is a map of them. It can also be found by going into Google and entering 'Great Horwood footpaths'.

We in the parish are very lucky in that the landowners through whose land the field paths run are responsible and wise people, which makes my work easier. I would like to thank them - and will talk with them if and when a need arises.

If you, dear reader, see something about a path that needs rectifying please initially contact me. [alanabiggins@gmail.com](mailto:alanabiggins@gmail.com) Typically this is likely to be mud at a kissing gate making it difficult to pass. It could also be a broken stile. I will do my best to remedy it. If you have any questions - please ask.

Alan



## GREAT HORWOOD SCOUT GROUP

### MERRY CHRISTMAS TO GREAT HORWOOD



#### From 1st Great Horwood Scout group

The Group Is flourishing and growing both with Young People and Adults, so thank you for supporting us.

But we can always do with more Adult help  
So why not sign up to our 4 week challenge

#### Take the four week challenge

Volunteer for just four weeks and be amazed at the difference you'll make.

**Week 1** See what we get up to

**Week 2** Start to help out

**Week 3** Get a little more involved

**Week 4** You'll know if Scouting is for you.

We have a wide range of flexible roles either supporting young people or behind the scenes. Any help is truly amazing.

Interested?

Contact Yvonne Taylor on 07931 585926 or email [adcbandc@uwclub.net](mailto:adcbandc@uwclub.net)



## GREAT HORWOOD AND SINGLEBOROUGH WI

### Poetry in Motion

Members of WI in Great Horwood and Singleborough were entertained by 'Performance Poet' Mark Niel at the November meeting held in Great Horwood Village Hall. Mark is the official Milton Keynes Poet Laureate - an accolade he was awarded by a former Mayor in recognition of his contribution in raising

the profile of local poets and the city of Milton Keynes in a positive way.

Mark told his story of how he moved from a safe 20-year career in financial services to an uncertain, but more creative profession as a poet, writer, performer and workshop facilitator. Mark has appeared on several BBC radio programmes and major poetry festivals, and believes that poetry can be entertainment as well as art. His engaging style and humour combined to prove that point at our WI meeting - a very enjoyable evening was had by all. Attendees were able to buy Mark's book 'Somewhere South of Normal' which is a collection of some of his poetry and Mark signed copies for WI members. Mark kindly stayed on to judge our competition. Congratulations to Monica Gilbey for her Haiku (Japanese 3 line poem) and Karalyn Sparkes for her poem - both judged to be joint winners. One of Mark's poems, aptly with a Christmas theme is published, with his permission, at the end of this article. (see Page 10)

After tea and coffee it was then down to business for our Annual General Meeting and voting for the incoming new committee members. After five years as President Angela Mayne is stepping down as she and her husband are moving to Sussex. Angela will be greatly missed and has been a very dedicated, popular President, supported by the committee in making sure that events run smoothly.

Thankfully, Angela will still be with us for a little while and able to assist in the handover to the incoming President. It was unanimously agreed at our AGM that Ann Biggins will be our new President with Kathy Thompson appointed as Vice President. We wish them both the best of luck in their new roles.

The walking group has taken to walking the redways of Milton Keynes for the past few weeks due to the weather although we did



manage Botolph Claydon Woods and more recently Stowe (*picture below*). We've walked the Emerson Valley to Furzton Lake and along the Grand Union canal from Campbell Park to Woolstone and Willen Lake. The amount of green space in MK always surprises and we are fortunate to have such easy access to these places.

Plans are now well underway for our Christmas Party on Tuesday, 14th December at 7.30pm.

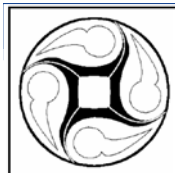
If you would like to join us, please contact Ann Biggins -  
annieqqmk@gmail.com 07961960802.

### Letter to Santa

Dear Santa, I don't want an Xbox,  
Kinect or PS2  
DVDs or MP3s  
Are not what I want from you  
Tell your elves to take a break.  
Their list is one name short  
But I'll still leave Rudolph a carrot  
And you a glass of port  
I promise I have been good this year  
Don't think this my confession  
It's just the commercialisation of Christmas  
Seems perverse in times of recession  
And I'm really not bothered about presents  
That's not what Christmas means  
So keep your Ben Sherman and Ralph Lauren  
And even True Religion jeans  
Give your gifts to the more deserving  
The poor and homeless and needy  
I'm blessed with most things a man might want  
And any more would just be greedy  
Instead please send me patience  
And love and understanding  
Help me be a better person  
In days that are so demanding  
Give me time to spend with family  
Goodwill to share with friends  
Peace and compassion for the human race  
And charity that never ends  
You see, presents in the absence of love  
Bring only short-lived cheer  
So help us all take the spirit of Christmas  
And make it last all year

*Mark Niel, MK Poet Laureate, speaking at Great Horwood and Singleborough WI.*

## PARISH PUMP



Great Horwood  
Parish Council

### A VERY BIG THANK YOU!

Last month, Great Horwood suffered a storm and due to high winds, this caused many fallen trees to block all roads out of the village. In true Great Horwood style, all those with skill, equipment and determination cleared the roads of damaged branches and within a few hours we were 'open' again. Thank you to all those who gave their time and expertise. It was very much appreciated.

### LOCAL CAUSES BENEFIT FROM PARISH COUNCIL GRANTS



Great Horwood Parish Council received 5 applications from local groups for grants this year. The following organisations were successful:

Football Club received £500 to purchase new kits, footballs and goal posts for new football teams.

Great Horwood School received £1000: £500 to pay for an Ecology Report so work can be planned on their woodland area and £500 to enhance their music and arts curriculum.

WI received £250 to book some interesting speakers for the forthcoming year.

Nook Park Residents Association received £400 to purchase a park bench and planters.

The Winslow and District Community Bus received £600 to pay for a monthly deep clean by an external cleaning company.

The awards will be presented at the next Parish Council meeting on Monday 13th December and we hope that representatives of all the award winners will attend. Congratulations to all!

### OUTSTANDING BUCKS COUNCIL MATTERS



The Parish Council are aware that there are a number of matters that still need to be addressed by Buckinghamshire Council. We will continue to chase these and other issues until a satisfactory conclusion is reached.

Please continue to report any potholes to [www.fixmystreet.com](http://www.fixmystreet.com) and if you leave your name, you should receive a response.

### WELCOME TO GREAT HORWOOD

A big welcome to our new residents! There have been many people moving in and out recently.



We hope you are settling in and enjoying our lovely village community. Would you like to receive a Welcome Pack? This has

recently been updated and includes information on village organisations, the School, Pub, Church and the local area. Please contact John Gilbey by email on [johnwgilbeypc@gmail.com](mailto:johnwgilbeypc@gmail.com)

The date of the next meeting is **Monday 13th December at 7.30pm** in the Village Hall. Minutes of meetings can be found on the noticeboard and the Parish Council website [e-voice.org.uk/ghpc/](http://e-voice.org.uk/ghpc/)

*Sue Brazier, Parish Clerk Great Horwood*  
[clerk@greathorwoodpc.org.uk](mailto:clerk@greathorwoodpc.org.uk)

### NEW BUS SERVICE FOR THE VILLAGE STARTING IN JANUARY



The new 60A bus service that I publicised in the October edition of Focus is going to start, as promised, on 4th January 2022.

This new service will operate from Monday to Friday (except bank Holidays).

It will provide a service from Great Horwood (High Street) **towards Buckingham** leaving at 10.24 and arriving in Buckingham (Tesco) at 10.33 and Buckingham (High Street) at 10.38.

The return journey leaves Buckingham (High Street) at 12.45 and Buckingham (Tesco) at 12.50, arriving back at Great Horwood (High Street) at 12.59

The service **towards Aylesbury** leaves Great Horwood (High Street) at 10.59, arriving in Aylesbury at 11.38, with the return journey leaving Aylesbury Bus Station at 13.45, arriving back at Great Horwood at 14.24.

All other bus service for the village will continue to operate as previously including all those services provide by the Winslow and District Community Bus.

**Please find the loose leaf bus timetable included in this edition of Focus and keep it for future reference.**

*Cllr. John Gilbey*

*Chairman Great Horwood Parish Council*

## GARDEN NEWS

When I worked as a Gardener on country estates I would get asked lots of questions. Sometimes it would be to find out the answer, sometimes it would be to give the person an opportunity to let you know what they know, but every now and again I would get the classic, "What do you actually do in the Winter?" It is a bit like when people ask me if I only work on a Sunday morning now, there is always more than meets the eye and in the garden, just like the church, a lot that goes on during the quiet months of our Winter hibernation.

If you are looking to grow things next year, now is the time to get our affairs in order. Looking at catalogues at the vast array of things that you can grow is all part of the fun but much more rewarding than this is getting all those things that you have been hankering after for so long finally into the ground.

Now is the ideal time to be planting any shrubs that you want to have next year, if you plant them in December they will be dormant but have the rest of the winter to settle their roots into the ground and get properly established. This is especially important if they are going to give you fruit. Raspberries, gooseberries, Blueberries, apples, pears and plums, pretty much anything will all relish this time to sink themselves into some fresh soil (as long as the ground isn't frozen, I'm writing this in November so don't know what the weather will be like). Part of the beauty of fruiting shrubs is that once established, you have very little to do whilst they get on with doing their own thing, a bit of pruning and lots of harvesting and that is it. It's a win-win.

I'm sure that some of you will have big old clumps of rhubarb taking up a corner of the garden or allotment. Now is the ideal time to lift it if it looks to be over congested. Dig it up, separate it, (a good way of doing this is to insert 2 garden forks back-to-back and prise them apart). Each individual crown can then be re-planted, making sure that you empty out your compost bin to give the depleted soil a fabulous feed. You will also increase your yield if you do this. Any that you don't have room you can put them in as big a pot as possible and give them as a present to say, any assistant curate who is mad keen on gardening that you might know.

There is a ton of stuff that needs doing in winter, especially in the run up to Christmas, the more that you do now, the greater the reward later. It is a little bit like what I believe as a Christian.

And while I am at it, I hope that you and yours have a wonderful, blessed Christmas.

Mark

### Jobs to do in the garden for December

- Choose a Christmas tree, not one of those plastic ones, a REAL one, locally grown.
- Prune apples and pears, get them into some sort of shape. Also prune maples and birches now, if you do it in December you will avoid bleeding and losing any sap.
- Reduce the watering of houseplants, they get less sun, so they don't lose as much water. Don't leave them to swim around in a sodden pot!
- Take hardwood cuttings, they are the easiest. A cutting should ideally be the length and thickness of a pencil, bundle them all together and stick them in a pot, or the ground. Make sure that the exposed ends are in good contact with the soil and hopefully you'll have lots of babies in the spring.



Great Horwood  
Parish Council

## GREAT HORWOOD PARISH COUNCIL

### Useful contact details

#### Members of the Parish Council :

Please note that councillors now have a dedicated Parish Council email address. This is in order to comply with new Data Protection Regulations that came into force in 2018. It is good policy to keep council emails separate from private emails.

**John Gilbey** Chairman 01296 711915  
johnwgilbeypc@gmail.com

**Caroline Cousin** Vice Chairman 01296 713548  
carolinecousinghpc@gmail.com

**Robert Davies** 01296 712763  
robert7\_daviesghpc@yahoo.com 07967 868881

**Dave Taylor** 07980 546484  
daveghpc@btinternet.com

**Angela Mayne** 01296 715400  
angelamayneghpc@outlook.com

**Jackie Goss** 01296 713135  
jackiegossghpc@gmail.com

**Gavin Laird** 01296 712798  
Gavinlaird78ghpc@gmail.com

#### Clerk to the Council

Mrs Sue Brazier 01296 714712  
clerk@greathorwoodpc.org.uk

**Parish Council Website** www.e-voice.org.uk/ghpc/  
**Great Horwood Village Hall Bookings** 01296 715968

**Doctors Car Service** 07704 140110

**Winslow and District Community Bus** 01296 715786

**Aylesbury Vale Dial-a-Ride** 01296 330088

#### Community Police Officers

PCSO Andy Piotrowski Tel: 101  
WinslowandDistrictNHPT@thamesvalley.pnn.police.uk

**NO FOCUS IN JANUARY**  
**Next issue February**  
**editor@ghfocus.com**

## Winslow Community Bus

www.winslowbus.com  
 wdcbenquiries@btconnect.com  
 Tel: 01296 715786



### Winslow & District Community Bus Needs Volunteer Drivers

The Winslow & District Community Bus relies on volunteer drivers to run its services, excursions and hires.

We are always in need of volunteer drivers, especially at the moment! So, if you have a D1 on your licence, and have some spare time, please consider becoming a driver for your local Community Bus.

You can do as much or as little as you like, from our shorter local runs to some of our longer day trips. We visit all kinds of places, including garden centres, stately homes, shopping centres, countryside drives as well as our regular scheduled bus services, and the people who use the bus are a very friendly crowd!

We offer certificated training to MIDAS standard, and pay out-of-pocket expenses.

Please call or visit our website for more information.

#### We are now running the following services:

**Aylesbury Market Bus (See left)- runs every Friday and Saturday morning** -- from Winslow, through Gt Horwood, Little Horwood, Mursley and Swanbourne, arriving in Aylesbury just after 10am and departing at 12.15pm. Bus passes accepted, otherwise £4.50 return.

**Winslow Market Service 54abc - runs every Wednesday morning**

This service picks up in the surrounding villages and then into Winslow, (Swanbourne, Mursley, Great Horwood, Whaddon, Nash and The Claydons). Pick up times vary according to village. Bus passes accepted, otherwise £3.00 return

**Buckingham Bus Service - runs on the first Tuesday of the month**

Picking up in Winslow and surrounding villages. 1 hour in town then 1 hour in Tesco, or 2 hours in Tesco. Door to door service. Bus passes accepted, otherwise £4.50 return

**Westcroft Shopping - runs every 2nd and 4th Thursday of the month**

Picking up in surrounding villages. Morrisons, Boots, Aldi, etc., bus passes accepted, otherwise £4.50 return. Ring to book.

**Despite the government lifting restrictions, we still have the following guidelines in place to help keep yourselves and our drivers safe:**

- Please call and reserve your seat in advance. All 16 seats are back on board but the double seats are still for single occupancy only unless agreed in advance with the coordinator.
- We ask that all passengers wear a face covering while travelling on the bus.
- We also ask that all passengers use the hand sanitiser provided on the bus.

Please contact the WDCB Coordinator for more details.

**Passengers are not to travel on the bus if they or any member of their household are displaying any signs of the COVID-19 virus.**

**Tel: 01296 715786**

# THE PLUMBER

Apprenticeship Served 1972 - 78

City and Guild Qualified

**ON CALL EVERYDAY**

Domestic and Commercial Installations,  
Maintenance and Repair Service.

- 💧 Burst/Leaking Pipes
- 💧 Blocked Sinks/Toilets
- 💧 Hot Water Tanks
- 💧 Overflows
- 💧 Showers
- 💧 Radiators and Pumps
- 💧 Garden Taps/Water Butts
- 💧 Fault Finding
- 💧 FREE WRITTEN QUOTE

**Call The Plumber Anytime**

**07970 317843**

**theplumber@email.com**

*1<sup>st</sup> aid for your plumbing*



# Claydon Auctioneers

**Auctioneers of:**

Antiques, Collectables, Silver,  
Jewellery, Watches, Paintings & Prints,  
Furniture, Clocks, Militaria,  
Sporting Goods & Memorabilia,  
General Goods & Chattels, etc.

Free auction valuations available,  
Partial & total house clearance service,  
Insurance, probate & family  
division valuations

Auctioneer: Louise Gostelow

Contact:

01296 714434

info@claydonauctioneers.com

www.claydonauctioneers.com

Claydon Auctioneers Ltd.  
The Claydon Saleroom,  
Calvert Road, Middle Claydon,  
Buckinghamshire, MK18 2EZ



# THE CUTTING CORNER

Est 1998

Traditional Barber Shops



**NEW LARGER SHOP NOW OPEN**

## WINSLOW

Opening times:  
Tues, Weds & Fri 9am-6pm  
Thurs 9am-7pm  
Sat 8.30am-5pm

2a High Street  
Winslow  
Buckinghamshire  
Tel: 01296 715240

## BLETCHLEY

Look online for opening hours.  
140 Buckingham Rd  
Bletchley, Milton Keynes  
Tel: 01908 375987

Appointments available  
Thursdays, Fridays and Saturdays at  
74 High Street, Winslow.  
Book online via our  
website



[www.cutting-corner.co.uk](http://www.cutting-corner.co.uk)

**FREE PARKING!** Find us on Facebook



## RK Plumbing and Heating

- Bathroom Installation
- Central Heating Systems
- All Plumbing Work Undertaken
- Landlord Gas Safety Certificate
- Breakdown and Repairs

FOR A JOB WELL DONE

To get a free quote  
Call Rick on 07720 265645

or

email: rick@rkplumbing.net  
www.rkplumbing.net



### Quality Decorators

Over 15 years experience

- ∞ Interior and Exterior
- ∞ Hand Painted Kitchens
- ∞ Airless Spray System
- ∞ Free Quotations and Friendly Advice

#### Contact

01280 816699

07941 054 831

www.callingham.com



# ExemplaCare

Exceptional carers & nurses at home

We offer the very best personalised care and support in the comfort of your own home.

We serve Buckingham, Winslow, Brackley & the surrounding villages.

■ Personal Care

■ Nursing Care

■ Home Help

■ Complex Care

☎ 01280 821860

✉ contact@exemplacare.co.uk

🌐 www.exemplacare.co.uk

Serving our local community & employing local staff.

## Chartered Accountants and Business Advisers

For all your accountancy needs

Bookkeeping services	Accounts preparation
Corporation Tax	VAT Returns & services
PAYE Returns & services	Company formation
Company secretarial work	Tax planning advice
Self-Assessment	Tax Return preparation

**The Barn, 11a Queen Catherine Road,  
Steeple Claydon, Bucks MK18 2PZ**

Contact us for a free consultation

Tel: 01296 738668    01296 826177

Mob: 07812 026346

Email: [office@ajrandco.co.uk](mailto:office@ajrandco.co.uk)



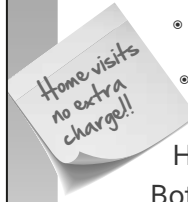
Chartered  
Accountant  
& Business  
Adviser

**AJR  
&Co**



### Buckingham Wills & Probate

Part of Bicester Wills Ltd



- Standard Single Will - **£199**
- Standard Mirror Wills - **£299**
- Lasting Power of Attorney Property & Financial or Health & Welfare - **£325 each**  
Both types for one person - **£500**  
Both types for a couple - **£950**
- Probate Assistance from - **£1,200**
- Prepaid Funerals Plans - from **£1,700**

Gail and Lesley offer a friendly estate planning service



Come in and see us  
The Garage, Castle Street,  
Buckingham, MK18 1BS  
or phone 01280 811201



[lesley@buckinghamwillsandprobate.co.uk](mailto:lesley@buckinghamwillsandprobate.co.uk)

01280 811201

[www.buckinghamwillsandprobate.co.uk](http://www.buckinghamwillsandprobate.co.uk)

# What's my house worth in Great Horwood?

If you want to know, get in touch with Ella Homes and Alexander & Co for your free, no obligation valuation.

We're working in partnership to cover more of your local area.

Aylesbury: 01296 710200  
Buckingham: 01280 817400

Bicester: 01869 324711  
Winslow: 01296 715386

**ella**

in partnership with

[www.ella.co.uk](http://www.ella.co.uk)

**A  
&C**

ALEXANDER & CO

[www.alexanderandco.co.uk](http://www.alexanderandco.co.uk)



# Window Cleaning

AND GUTTER CLEARING

WINDOWS CLEANED REGULARLY,  
ONCE EVERY 2 MONTHS,  
INCLUDING ALL FRAMES AND DOORS  
FOR NO EXTRA COST.

CONTACT CARL ON

07979 395 101

or

countryhousecleaning100@gmail.com

FOR A FREE QUOTE.

also PRESSURE WASHING  
OF PATIOS AND DRIVEWAYS

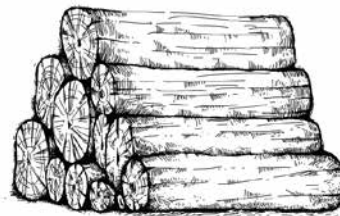
# Jason's Logs

Good quality logs delivered  
in full and half loads.

Garden clearance,  
Tree management  
Pruning services

Based at Edgecott

Tel 07961 538035



# Local Musical Theatre Classes

for ages  
**4 - 11**



*Be a star on stage and in life*

BOOK A TRIAL CLASS TODAY AT

**PWACADEMY.COM**

07568 447 131 | 01296 733 258 | admin@pwacademy.com

**Peplow  
Williams  
Academy**  
of Theatre and  
Performing Arts

# **D. Johnston**

## **Heating & Plumbing Solutions**

**Boiler installations / servicing / repairs**

**Oftec registered oil boiler specialist**

**Gas safe registered**

**Landlord Safety Certificate**

**Full Central heating Installations**

**Under Floor Heating**

**General Plumbing**

**Power flushing**

**Pressurised hot water systems**

**Bathroom installations**



[www.d.johnstonhps.co.uk](http://www.d.johnstonhps.co.uk)

Email: [djohnstonhps@outlook.com](mailto:djohnstonhps@outlook.com)

Tel: 01296 655169 / Mob: 07702 036217

# Precise PVC-u Building Supplies Ltd

Suppliers of Building Plastics

Precise PVC-u Building Supplies Ltd is a family run company based in Bletchley, Milton Keynes. We are established since 2003 and pride ourselves on our friendly and informed customer service.

Our experience in the trade ensures that we supply the best quality PVC products to all our customers. We guarantee next day delivery on all of our stocked items. We are a supplier of a wide range of plastic building products. Many of our customers use our services like a manufacturers and suppliers as we can order any product that is currently not in stock.

We are suppliers for window fitters, builders, plumbers and DIY enthusiasts. Whether you're an individual who likes home improvements or a professional window fitter we are able to supply you with all the necessary materials. Come down to the industrial estate and see how we can save you and your company money on all your PVC supplies.

## Some of our specialist PVC-u products include:

- Fascias, soffits and guttering fixtures and fittings
- Window sills
- Skirting boards
- Draining pipes
- Door panels and accessories including cat flaps and letter boxes
- Lead Roofing
- Polycarbonate for lean two's and conservatories
- Underground drainage
- Trims, pins, nails, tools bagged sand and cement
- Silicone, solvents and adhesives



**FREE**  
next day delivery  
to the local area  
on stocked items  
on orders over  
£50



**MK ONE Business Centre**  
Unit B, 12a Romar Court, Bletchley, MILTON KEYNES MK1 1RH  
t: 01908 270 994 e: sales@preciseupvc.co.uk

**Editor:** David Brazier editor@ghfocus.com  
**Typing & Layout:** David Brazier, Andy Gibbs.  
**Printing:** Harlequin Press Ltd.  
**Copy deadline:** 15th of month before publication.

**Distribution:** June Margerrison, Ann Biggins, Edwina Daymond, Louise Edwards, John Gilbey, Valerie Hancock, Duncan Hogston, Cathy Holland, Ian Lamberton, Gary Lee, Angela Mayne, Gill Wood, Kathy Thompson, Sylvia Whitehall.

Available online at: [www.e-voice.org.uk/ghpc](http://www.e-voice.org.uk/ghpc)

## St James' Church

### Christmas Events on Saturday 4th December

#### 10am – 1pm



### Wreath Making

with our wonderful Curate Rev Mark Nelson

Come and have a go at making your very own reasonably priced wreath.  
All materials provided.

### Christmas Tree Festival

Village organisations are invited to decorate their own tree  
to be left in Church for Christmas

### Christmas Carols

to be sung on the hour with coffee and mince pies

### Cake Stall

with extra Christmas goodies. All donations to go to the Roof Appeal

merry christmas!



**Come along and join in the fun**  
For more details contact Sue Brazier on 714712