

APRIL
2022



EASTER 2022

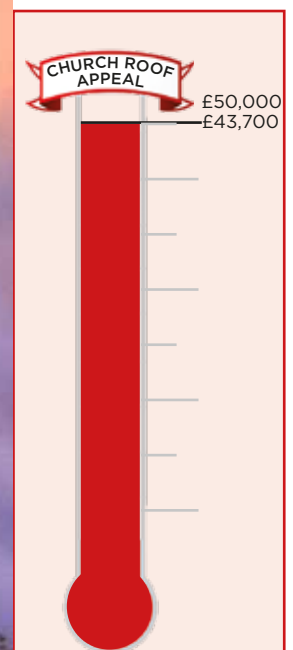
When it comes to symbols of Christianity, there is one that stands out above all others. Yes, we have the fish, the dove, even the Alpha and the Omega, they all have their place, but one symbol is recognised by all and that is the cross. We find it everywhere (especially if you are a Christian). It is in our homes, in our churches, sometimes we wear it on our bodies with jewellery, there are all manner of ways that it appears in our lives. It gets to the point that we become so used to seeing it, that we no longer really see it, it just becomes like any other wallpaper, shrinking away into the background. The Cross has become such a ubiquitous Christian symbol that many of us would be hard pushed to think of another, I even make the sign of it on myself when praying, it's everywhere!

And yet, the Crucifixion is only a small part of that miraculous story, the wonderful story that changed the world forever. We spend so much time and energy looking at the cross that we forget the glorious picture that is behind it, the resurrection. THAT is the game changer, that is where all the rules were re-written, that is where hope was re-established, that is where the focus of our attention should be, especially this Easter. Yes, you can't have an Easter without a Good Friday, but Good Friday isn't the grand sum of Easter!

Easter is the sum of all of our hopes, it is the event that breaks us out of the slump that we can sometimes find ourselves in. With everything that we have been through in the last couple of years. Maybe, just maybe, (and forgive me for saying this), we need to spend a little less time focussing on the cross and a little more time on the wonderful sunrise that broke 3 days later.

Amen

Rev Mark Nelson



Advertising and copy deadline for next issue : 15th April 2022.
To advertise or submit articles email: editor@ghfocus.com

MICK WOOD

Heating Services Ltd

SERVICE, REPAIR & INSTALL
OIL FIRED BOILERS

We are Grant G1 & Worcester AI approved boiler installers who are able to offer longer warranties at no extra cost to you.

All installations are to Oftecregulations.

OIL FIRED COOKERS
(Service & breakdown only)

- * Prompt personal attention
- * Oil tank gauges fitted
- * Power flushes



Tel: 01296 730 670
Mobile: 07979 645 472

THE SWAN INN

GREAT HORWOOD

A traditional village pub with bottled ales & Cask Marque, wines and lots of interesting gins.


Also we have

PAOLO'S Homemade Pizza's
Friday Evening and all day Saturday.

SPECIALS BOARD
Mon, Wed, Thurs & Sundays

NORMAL MENU
Mon, Wed Thurs & Sundays

Call 01296714404



5 Star rating *****

Greenway Dog Walking

DAYCARE AND BOARDING WITHIN THE FAMILY HOME
GROUP OR INDIVIDUAL WALKS, POP-INS
QUALIFIED CANINE 1ST AID AND EMERGENCY CARE
CPD CANINE BODY LANGUAGE
FULLY INSURED AND LICENSED LC-201905 37236
BUCKS CC

FIND US ON FACEBOOK
PLEASE CALL LOUISE FOR ANY ENQUIRIES
07889658215
BASED IN GREAT HORWOOD



HomeGym Equipment available for hire



- Treadmills
- Cross Trainers
- Bikes
- Rowing Machines
- and much more




Refer a friend for a weeks
FREE HIRE

Call 0800 043 2148
enquiries@homegymuk.com
www.homegymuk.com

Church Times

Church Wardens:

David Brazier 714712 and June Margerrison 714554
www.winslowbenefice.org.uk

St James' Services for April

3rd April	11.00am	Holy Communion
10th April	11.00am	Palm Sunday Service
11th April	8.00pm	Station of the Cross
14th April	8.00pm	Maundy Thursday Service
17th April	11.00am	Easter Day Communion
24th April	11.00am	Come and Share
1st May	11.00am	Holy Communion

Sidesmen

I Lamberton
D Brazier
-
-
J Margerrison
P Moyles
I Lamberton

Readers

I Lamberton
S Brazier
-
-
R Margerrison
S Bayliss
I Lamberton

Intercessions

J Brigden
D Brazier
-
-
J Margerrison
Clergy
J Brigden

Church Key: April - David Moore - 713281

May - Ian Lamberton - 715968

PLANT SALE ADVANCE NOTICE

As there is not a Bank holiday at the end of May our annual Plant Sale will be on Saturday 28th May 10am to noon and 1pm to 3pm. Refreshments and Raffle. 8 High Street, Great Horwood.

All proceeds in aid of Church Roof Appeal.

PALM SUNDAY SERVICE

Our Palm Sunday service will start with a Procession of Palms around the village. We will

meet at the bottom of Willow Road at 10.15am. You are welcome to join us at any point along the way, or at St James' for the start of the service at 11.00am where palm crosses will be distributed.

LENT LUNCHES

Lent lunches will continue to be served on Wednesdays up to 13th April. Come and join us in the Village Hall for delicious home-made soup and bread with cake and tea or coffee to follow. Lunches are served from 12 noon. All welcome.

MOTHERING SUNDAY SERVICE

Please join us for our Mothering Sunday Come and Share Service on Sunday 27th March starting at 11.00am. Flowers will be given to all Mothers. Coffee and simnel cake will be served after the service. All welcome.

EASTER LILIES

As many of you will know, St James' is decorated at Eastertime with lilies which can be purchased in memory of a loved one. The cost this year will be £3 per lily or £7.50 for three lilies. If you would like to purchase the lilies, please complete the memory list at the back of the Church and give any monies to June Margerrison at 5 Wigwell Gardens or Sue Brazier at 17 The Close by Friday 8th of April. Thank you.

STATIONS OF THE CROSS

A Benefice Stations of the Cross service will be held on the Monday of Holy Week, 11th April at 8.00pm. It is a short reflective service of readings and prayer. All welcome.

MAUNDY THURSDAY SERVICE

Our Maundy Thursday Service is a special service when we strip the altar of its cloths to reveal the bare wood underneath. The altar will remain like this until Easter. Please join us at 8.00pm as we look forward to Easter. All welcome.

CHURCH LIGHTING

The Tower was lit on the 21st of February to remember Allan Sirret's Birthday and for 4 nights from the 10th of February in memory of Bernard Sellars.

VILLAGE HALL

We are continuing to receive enquiries and bookings from different groups of people.

Please contact me for details of fees and availability in the future.

At present Lent Lunches are being served every Wednesday morning at 12.00 when homemade soup, bread and cakes are served when everyone is welcome. This continues until the 13th of April

Ian Lamberton 01296 715968

ianlamberton@aol.com

WINSLOW SPRING FAYRE

To celebrate their centenary Winslow WI has organised a Spring Fayre on Saturday 2nd April, 10am-2pm in Winslow Public Hall. Free admission. Refreshments available.


Variety of stalls including, tombola, craft, cake, woodwork, cards, children's lucky dip, glassware, raffle, body shop and lots more.

Do come and join us.

We appreciate the continued support of our advertisers that enable us to deliver Focus free of charge to every home in Great Horwood and Singleborough free of charge 10 times a year.

Acceptance and publication of and advert does not imply endorsement or approval by Focus of the company, products and services advertised.

Deadline day is 15th of month prior to publication.



CAN YOU HELP?



Great Horwood School PTFEA are looking for historical and geographic resources and artefacts to help improve the learning experience for the children. For example, maps, coins, medals, fossils or other historical or geographical items.

Any donations would be gratefully received.

Please take donations to Great Horwood School or email greathorwoodpta@gmail.com to arrange collection .



MOORESPARKS
ELECTRICAL

 07708 531 227 / 01296 708 683

 mooresparks@hotmail.com

 www.facebook.com/mooresparkselectrical

 @mooresparkselectrical

- FREE QUOTATIONS
- DOMESTIC & COMMERCIAL
- LIGHTING & POWER
- FAULT FINDING
- REWIRES
- CONSUMER UNITS
- TESTING, INSPECTION & CERTIFICATION




Winslow Community Bus

www.winslowbus.com
wdcbenquiries@btconnect.com
 Tel: 07483 336440



We are now running the following services:

Aylesbury Market Bus - runs every Friday and Saturday morning -- from Winslow, through Gt Horwood, Little Horwood, Mursley and Swanbourne, arriving in Aylesbury just after 10am and departing at 12.15pm. Bus passes accepted, otherwise £4.50 return.

Winslow Market Service 54abc - runs every Wednesday morning This service picks up in the surrounding villages and then into Winslow, (Swanbourne, Mursley, Great Horwood, Whaddon, Nash and The Claydons). Pick up times vary according to village. Bus passes accepted, otherwise £3.00 return

Buckingham Bus Service - runs on the first Tuesday of the month Picking up in Winslow and surrounding villages. 1 hour in town then 1 hour in Tesco, or 2 hours in Tesco. Door to door service. Bus passes accepted, otherwise £4.50 return

Westcroft Shopping - runs every 2nd and 4th Thursday of the month Picking up in surrounding villages. Morrisons, Boots, Aldi, etc., bus passes accepted, otherwise £4.50 return. Ring to book.

Asda - Monday 25th April

Bus passes are not accepted on this trip and will cost £5.00

Picking up in Winslow and surrounding villages

Asda Shopping with the option to drop at Stadium MK1 for M&S, Primark, Next and more.

Bluebell run and Lunch at The Greyhound in Aldbury - Tuesday 26th April - £7.00 travel only

Our annual trip to view the Bluebells around Ashridge followed by lunch at the Greyhound in Aldbury

Please contact the WDCB Coordinator for more details.

Timetables can be found online wdcbenquiries@btconnect.com

Outside the Town Council offices, Winslow Library or calling the WDCB coordinator

We ask that all passengers wear a face covering while travelling on the bus.

Passengers are not to travel on the bus if they or any member of their household are displaying any signs of the COVID-19 virus.

Tel: 07483 336440

GARDENING TIMES

I have this theory about native plants. It is that the more useful (or problematic) a plant is, the more common names it will have managed to accrue, after all why name a plant that they barely notice?

And so, this month, I am talking about ramsons, wild cowleek, cowlic, buckrams, broad-leaved garlic, wood garlic, stink bombs, Londoner's lillies, bear leek or bear's garlic. They are the plant that gives us such names as the surname Ramsay, Ramsbottom in Lancashire, Ramsdell in Hampshire, Ramsholt in Suffolk and Ramshorn in Staffordshire. It is of course the Wild Garlic, *Allium ursinum*. They are a sight common in our woodlands at this time of year, springing up out of the winter gloom, doing their thing and dying back before the trees have managed to get out of their slumber. Their white flowers shining out against the dark green leaves. They just seem so..... pure.

When I worked for the National Trust, the garden that I worked in had a huge problem with a leaf miner that nibbled the leaves of our Horse Chestnuts, the only trees that were relatively unaffected by this pest were the ones that had Wild Garlic growing profusely under them. The pungent smell seemed to be keeping the critters at bay, year upon year when the other trees had all their leaves withering and autumnal in July, these 6 Horse Chestnuts would still be in glorious full leaf, it was an astonishing contrast.

I am not usually too keen on people going foraging, it can be easy if you're not confident, to eat the wrong thing. Hemlock (the plant that killed Socrates, the ancient Greek philosopher) is closely related to, and looks a bit like, parsley. Deadly Nightshade is in the same family as tomatoes, potatoes and peppers. But the good thing about garlic, whether it is wild or cultivated has one sure fire way to be able to identify it.

The secret to working out if it is garlic in your hand is that if it is Wild garlic, it absolutely stinks of Garlic,

there is no mistaking it for anything else. Pinching the leaf brings the aroma to the fore and then you know that you are on the right track. During the Second World War onions were rarer than gold and so some children, evacuated from Liverpool to Ayrshire, would post back wild garlic to their families. "There were no polythene bags in those days, so his sack reeked permanently of the stuff until we returned three years later".

They can be a bit pushy if planted in our gardens (assuming that they like the conditions) and so are best left to the sensory overload of seeing them out in the wild. A woodland that is carpeted with them is an ancient woodland, they are seen as an indicator of age, somethings can't be hurried. Keep an eye out for the flowers in the verges and woodland, they cheer the heart!

Jobs to do in the garden in April

- Now is the time to be sowing seeds, even if you have some that are hopelessly out of date, it's worth a try. They are no use to anyone in that old seed packet - Give it a go! (although preferably indoors as the soil will still be cold), wait until you see the weeds growing if you want to sow outside.
- If you have any newly planted fruit trees, remove the blossom for the first 3 years of growth, this will make sure that all of the energy goes to producing healthy roots and stems. A short-term loss for long term gain.
- If your pot levels are going down, make sure you top them up again, adding fresh, nutritious compost.
- Now is the time to take basal cuttings of things such as Delphiniums, lupins, oxeye daisies, Heleniums and Campanulas. If they take, plant some in your garden and give some away.
- Prune back fig trees and Hydrangeas going back to a leaf node, they don't like the frost getting into the cut so make sure that it is later in the month.

MEN IN SHEDS

Not so much a Shed newsletter this time, more a noticeboard for what promises to be a busy month! The training sessions and BBQ are open to everyone so no need to be a Shed member although we are always happy to sign-up new recruits! You could call it 'try before you buy' so it's just our normal £2 session fee to help cover refreshments and overheads. The demonstrations could be simply to satisfy curiosity or they could provide the first step towards developing confidence and competence for safe, independent use of machines in Winslow Shed.

Training Sessions Spring 2022

All sessions are Thursday from 11:00 - 12:00

7th April	Planer and Planer thicknesser
14th April	Woodturning Lathe - spindle work
21st April	Woodturning lathe - face plate and bowl work
28th April	Bandsaws
5th May	Router and Router table
12th May	Introduction to metalwork lathe

19th May Tool sharpening, setting and using grinders.

26th May Introduction to welding. (Gas, MMA and MIG).

AGM 11.00 Tuesday 5th April 2022

Everyone welcome.

The Annual General Meeting provides us a welcome chance to meet and thank supporters, to review where we are and to look forward to the coming year. Formalities will be brief leaving plenty of time for refreshments and our slightly out-of-season but much anticipated.....

Christmas BBQ!

Everyone welcome.

Hot dogs available from 12:30, please sign-up in the Shed or get in touch to let us know so that we can cater accordingly.

**The Shed is open every Tuesday and Thursday
10:00 - 4:00 at Unit 4, Station Road Ind. Estate.**

www.MenInShedsWinslow.org.uk

Or for more info call Dave Saunders; 01296 714164



Buckingham Wills & Probate

Part of Bicester Wills Ltd

- Standard Single Will - **£199**
- Standard Mirror Wills - **£299**
- Lasting Power of Attorney Property & Financial or Health & Welfare - **£325 each**
Both types for one person - **£500**
Both types for a couple - **£950**
- Probate Assistance from - **£1,200**
- Prepaid Funerals Plans - from **£1,700**

Home visits
no extra
charge!!

Gail and Lesley offer a friendly estate planning service



Come in and see us
The Garage, Castle Street,
Buckingham, MK18 1BS
or phone 01280 811201



lesley@buckinghamwillsandprobate.co.uk 01280 811201
www.buckinghamwillsandprobate.co.uk

RK Plumbing and Heating

- Bathroom Installation
- Central Heating Systems
- All Plumbing Work Undertaken
- Landlord Gas Safety Certificate
- Breakdown and Repairs

FOR A JOB WELL DONE

To get a free quote
Call Rick on **07720 265645**
or
email: rick@rkplumbing.net
www.rkplumbing.net



Reg. No. 191568

OPENING HOURS
Please check our website for up to
date opening hours



TWIGS NURSERIES
Windy Ridge, Thornborough, Buckingham,
MK18 2DZ
twignurseries@gmail.com



SPRING IS
COMING...

SPECIALTY COFFEE,
PIZZA, HOT CHOCOLATE,
TEA, CAKE

PERENNIAL PLANTS

FAIRTRADE GIFTS
AND ORNAMENTS

BEDDING
PLANTS

SHRUBS & ROSES

INDOOR PLANTS
AND POTS



WINSLOW AND DISTRICT ART SOCIETY

Our weekly meetings are in Winslow every Thursday morning and Padbury every Tuesday morning. Anyone over age 16 with an interest in visual arts is eligible to become a member subject to a small subscription. We are a friendly and helpful group and anyone who is interested in becoming a member can find more details on our website www.winslowart.org.uk

Demonstrations in a range of media are normally held at Winslow Bowls Club on the last Thursday of each month. Entry is from 7.00 pm for a 7.30 start. Details are:

31 March - Heather Miller - Acrylics

28 April - Tony Jackson - Pastels, still life

26 May - Melissa Wishart - Oil, seascapes

30 June - Stanley Hurr - Watercolour, flowers

OFSTED CONFIRMS GREAT HORWOOD CHURCH OF ENGLAND SCHOOL IS GOOD!

Great Horwood CE School is absolutely thrilled to be able to share with the village community the Ofsted report from our recent inspection on 26th January 2022 which confirms that 'Great Horwood Church of England School continues to be a good school' and 'we are a welcoming and nurturing school where pupils feel safe'.

We were all absolutely delighted with the outcome. We would like to take this opportunity to thank everyone in Great Horwood, Singleborough, surrounding villages, St James Church and the Parish Council for all for the support you have given to the school, the staff and its children.

It was a privilege to hear from the lead inspector some of the lovely comments the parents made about the school. We were all extremely proud of the children, they are a real credit to the school and village community. The inspectors thought our children were mature, insightful, superbly behaved and clearly loved being at Great Horwood School. In fact, if they had been allowed the children would have spent all day talking to the inspectors! Some of the comments made by the children made us all feel very

These are enjoyable and informative evenings and last about two hours with a break for tea and biscuits. Non-members are welcome to attend, and entry will cost £5.00

Arrangements are now being made for our next exhibition which will be held over the weekend of 21 and 22 May. This is held in the local public hall and will feature work done by our members. Admission is free.

Our new Facebook facility is now available so please visit us to see what is going on.

For more information about us please contact our website www.winslowart.org.uk or contact:

Chair: Maureen Barnes 01280 815691

Secretary: John Beckerleg 01280 816932

Treasurer: Jackie Chambers 01296 713607

emotional and I wanted to share a few with you.

The children at Great Horwood School told the inspectors:

'Our values of love, perseverance and respect guide us in knowing what we can do to help others'.

'What matters to us is that people are happy with their choices and that they are happy, we value the diversity in our school'.

This is a place for everyone to relax, appreciate nature, and be grateful for our blessings'.

The inspectors found that we have developed an ambitious, interesting and well organised curriculum. The curriculum is well sequenced so that pupils' learning builds on what they have learned previously. Classrooms are hubs of lively discussions and in lessons pupils are keen to do their very best. The full ofsted report can now be found on our website <https://www.greathorwood.bucks.sch.uk/>.

I am very grateful to a dedicated staff team who worked hard to prepare for the inspection. They kept the school running as smoothly as possible so that everyone survived a long and intense day. It is an absolute honour to work with them all.

Mrs Paula Shaw

Headteacher

HOLLAND ENGINEERING SERVICES



MOT TEST STATION
Motorcycle servicing & repairs
Quads & Lawnmowers
Parts and tyres
Mig/Tig Welding

Salden Crabtree Farm
 Whaddon Road MURSLEY Milton Keynes MK17 0PR
 Tel: 01296 728693
 Mobile: 07879 427205

Shaun Guard TV & WIFI SERVICES

- Aerials - repaired & supplied and poor reception solved
- Satellite - Sky Q dish upgrades, discreet dish installation
- Internet - blackspots cured, data cables to your TVs
- TVs - hung on your wall or set up and tuned

OXFORD AERIALS

www.oxfordaerials.co.uk
shaun@oxfordaerials.co.uk

Call Bicester 01869 879111



Great Horwood and Singleborough WI enjoyed another get-together in the village hall with guest speaker, Dave Sivers, a best-selling crime writer whose stories are set in Aylesbury Vale. Members heard about his fascinating journey to get his first novel, *Scarves Beneath Soul*, published after his departure from a relatively safe career in the civil service and he researches the story lines. Dave has always enjoyed writing, spent a brief time as a journalist on *The Bucks Herald* and credits his mother for his love of words.

Dave also writes plays for amateur theatre and is a founder of the annual BeaconLit festival of books and writing. His latest thriller - *In Ink* - is set in Tring and is typical of him writing gritty fiction set in genteel areas. To date Dave has published nine novels and a small collection of short stories. After taking questions from the audience, Dave stayed on to sign books and judge the WI's Strange Objects competition. His books are available in paperback and Kindle on Amazon.co.uk.

Next month we will be gathering together at a local bistro for our annual meal and will also be hosting The Chase meeting which comprises several local WI groups. We will also be attending the Winslow Spring Fayre.

The walking group has continued to enjoy circular



Crime writer Dave Sivers speaking at the March WI meeting in Great Horwood

walks around rural farmland and scenic villages each Monday morning.

If you've recently moved to Great Horwood, the local WI is a great place to meet people and get to know Buckinghamshire. As well as meetings every second Tuesday of the month with a guest speaker, we also enjoy trips to places of interest, workshops, lunches and afternoon teas.

If you would like to attend our May 10th meeting to see if the WI is for you, please contact Ann Biggins annieqqmk@gmail.com / 07961 960802.

1ST GREAT HORWOOD SCOUT GROUP

Young People go over and above for Charity



The Beavers and Cubs have raised an awesome £500 for the Thames Valley Air ambulance.

This was as part of the Thames Valley Air Ambulance Challenge Badge that they were working towards.

Various activities had to be completed under the themes of flight, Fundraising, Medical and Accident Prevention.



The beavers were sponsored for doing chores around the house, while the Cubs ran a Family Bingo evening. WELL DONE BEAVERS AND CUBS

LEADERS RECOGNISED WITH AWARDS

Our Cub Leader Emma Laird was awarded her Wood Beads from the District Commissioner Steve Elliot. Emma has worked hard to earn her wood beads by completing 19 modules and mandatory training in Safety, Safeguarding and First Aid.

Emma achieved all this while being a full time teacher, mum and wife! Well done Emma.

Steven Cordes one of our Scout Leaders was awarded his 5 year service award although he has been in Scouting for longer if you add in his time as a Young Person.

Claire Lewis-Evans otherwise known as Otter to the Beavers has been awarded her 5 year service award.

WELL DONE EMMA, STEVEN AND CLAIRE

The dedication and enthusiasm that all the Leaders give to the group is exceptional; Planning programmes that are well Balanced with a mixture of outdoor and indoor activities. Arranging residentials and visits and much more.

They do all this while holding down full time jobs and running a Family

And none of us get paid a penny!

If you would like to be a part of our AWESOME group then why not come and join us; we have a variety of roles to suit you on a flexible basis.

Just email adcbandc@uwclub.net for information

VILLAGE INVOLVEMENT; this plays an important part of the Groups activities so please keep us posted so we can get involved. We will be at Nash Village Fete in the Summer.

HEADQUARTERS NEWS

Currently we are drawing up plans to have the HQ adapted to accommodate persons in wheelchairs or with special needs with access to a disabled toilet.

The tree behind the HQ has now been crowned and new paving and bark has been laid to make it a safe fire escape route.



PARISH PUMP



UPDATE ON PLANS TO CELEBRATE THE QUEEN'S PLATINUM JUBILEE 2022

Great Horwood Parish Council
Thursday 2nd June - The Green, evening



The Great Horwood Silver Band will be playing on The Green in the evening. This will lead up to a bugler playing a specially written piece, the unique Bugle Call 'Majesty' at 9.40pm followed by the beacon lighting at 9.45pm.

Sunday 5th June - Horwode Pece, lunchtime and afternoon

The Great Horwood Silver Band and the Giocosso Band will be sharing the entertainment during lunchtime and the afternoon. Many of you will remember the Picnic on the Pece that has been held during past summers. This year, The Big Jubilee Lunch has been launched for Jubilee Sunday and it is hoped that many of you will bring your picnic lunches down to the Rec and enjoy the music and hopefully the weather!

More specific details of when the music for both these events will start will be published next month.

LITTER PICK - a date for your diary SUNDAY 8th MAY, STARTING AT 10am ON THE GREEN



Please come along to help tidy the village. Litter pickers and rubbish sacks will be provided. We will also be providing hi viz jackets but if you

have your own, that would be even better. Please could you bring your own gloves; gardening gloves would be good as thorns and sharp objects tend to tear plastic gloves.

PARKING ON THE PAVEMENT



It has come to our attention that there are a considerable amount of cars parking on the pavement.

Whilst the Parish Council understands that many homes do not have driveways and often families own several cars, we would ask that car owners think carefully when they park their vehicles. If you absolutely must park on part of the pavement for the safety of your vehicle and other road users, please leave enough room for access for a pram/pushchair or wheelchair. Thank you

WELCOME TO GREAT HORWOOD



A big welcome to our new residents! There have been many people moving in and out recently. We hope you are settling in and enjoying our lovely village community. Would you like to receive a Welcome Pack? This

has recently been updated and includes information on village organisations, the School, Pub, Church and the local area. Please contact

John Gilbey by email on johnwgilbeypc@gmail.com

FOCUS ONLINE

Did you know that there is an online edition of Focus

with every copy from February 2012?

So, if you have mislaid your copy and can't find the information you need, just log onto

<https://e-voice.org.uk/ghpc/focus-magazine/>

The date of the next Parish Council meeting is **Monday 11th April at 7.30pm** in the Village Hall. The Annual Parish Meeting this year will take place on **Monday 25th April at 7.30pm** in the Village Hall. Come along to hear village organisations talk about their year so far. Minutes of meetings can be found on the noticeboard and the Parish Council website e-voice.org.uk/ghpc/
Sue Brazier, Parish Clerk Great Horwood
clerk@greathorwoodpc.org.uk



Great Horwood
Parish Council

GREAT HORWOOD PARISH COUNCIL

Useful contact details

Members of the Parish Council :

Please note that councillors now have a dedicated Parish Council email address. This is in order to comply with new Data Protection Regulations that came into force in 2018. It is good policy to keep council emails separate from private emails.

John Gilbey Chairman 01296 711915
johnwgilbeypc@gmail.com

Caroline Cousin Vice Chairman 01296 713548
carolinecousinghpc@gmail.com

Robert Davies 01296 712763
robert7_daviesghpc@yahoo.com 07967 868881

Dave Taylor 07980 546484
daveghpc@btinternet.com

Jackie Goss 01296 713135
jackiegossghpc@gmail.com

Gavin Laird 01296 712798
Gavinlaird78ghpc@gmail.com

Clerk to the Council

Mrs Sue Brazier
 01296 714712 clerk@greathorwoodpc.org.uk

Parish Council Website www.e-voice.org.uk/ghpc/

Great Horwood Village Hall Bookings 01296 715968

Doctors Car Service 07704 140110

Winslow and District Community Bus 01296 715786

Aylesbury Vale Dial-a-Ride 01296 330088

Community Police Officers

PCSO Andy Piotrowski

Tel: 101

WinslowandDistrictNHPT@thamesvalley.pnn.police.uk

Trevor Evans

'Your Personal IT Man'

PC Support, Secure Wireless Broadband and Home Networks,
 Anti-Virus and Anti-Spyware Support

I can help you solve your IT problems and requirements

A Friendly and Professional Service

Call or Email me for a No-obligation Chat

☎ 01296-714413

✉ trevor@trevorevans.me.uk

Claydon Auctioneers

Auctioneers of:

Antiques, Collectables, Silver, Jewellery, Watches, Paintings & Prints, Furniture, Clocks, Militaria, Sporting Goods & Memorabilia, General Goods & Chattels, etc.

Free auction valuations available, Partial & total house clearance service, Insurance, probate & family division valuations

Auctioneer: Louise Gostelow

Contact:

01296 714434

info@claydonauctioneers.com

www.claydonauctioneers.com

Claydon Auctioneers Ltd.
The Claydon Saleroom,
Calvert Road, Middle Claydon,
Buckinghamshire, MK18 2EZ

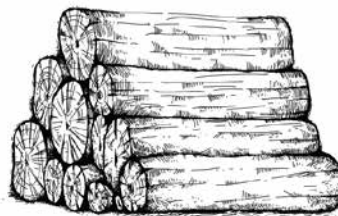
Jason's Logs

Good quality logs delivered in full and half loads.

Garden clearance,
Tree management
Pruning services

Based at Edgecott

Tel 07961 538035



THE CUTTING CORNER

Est 1998

Traditional Barber Shops



NEW LARGER SHOP NOW OPEN

WINSLOW

Opening times:
Tues, Weds & Fri 9am-6pm
Thurs 9am-7pm
Sat 8.30am-5pm

2a High Street
Winslow
Buckinghamshire
Tel: 01296 715240

BLETCHLEY

Look online for opening hours.
140 Buckingham Rd
Bletchley, Milton Keynes
Tel: 01908 375987

Appointments available
Thursdays, Fridays and Saturdays at
74 High Street, Winslow.
Book online via our website



www.cutting-corner.co.uk

FREE PARKING! Find us on Facebook



Chartered Accountants and Business Advisers

For all your accountancy needs

Bookkeeping services	Accounts preparation
Corporation Tax	VAT Returns & services
PAYE Returns & services	Company formation
Company secretarial work	Tax planning advice
Self-Assessment	Tax Return preparation

**The Barn, 11a Queen Catherine Road,
Steeple Claydon, Bucks MK18 2PZ**

Contact us for a free consultation

Tel: 01296 738668 01296 826177
 Mob: 07812 026346
 Email: office@ajrandco.co.uk



Chartered Accountant & Business Adviser



THE PLUMBER

Apprenticeship Served 1972 - 78
City and Guild Qualified

ON CALL EVERYDAY

Domestic and Commercial Installations,
Maintenance and Repair Service.

- 💧 Burst/Leaking Pipes
- 💧 Blocked Sinks/Toilets
- 💧 Hot Water Tanks
- 💧 Overflows
- 💧 Showers
- 💧 Radiators and Pumps
- 💧 Garden Taps/Water Butts
- 💧 Fault Finding
- 💧 FREE WRITTEN QUOTE

Call The Plumber Anytime
07970 317843
theplumber@email.com

1st aid for your plumbing



ExemplaCare

Exceptional carers & nurses at home 

We offer the very best personalised care and support in the comfort of your own home.

We serve Buckingham, Winslow, Brackley & the surrounding villages.

- Personal Care
- Nursing Care

- Home Help
- Complex Care

📞 01280 821860

✉ contact@exemplacare.co.uk

🌐 www.exemplacare.co.uk

Serving our local community & employing local staff.

Window Cleaning

AND GUTTER CLEARING

WINDOWS CLEANED REGULARLY,
ONCE EVERY 2 MONTHS,
INCLUDING ALL FRAMES AND DOORS
FOR NO EXTRA COST.

CONTACT CARL ON

07979 395 101

or

countryhousecleaning100@gmail.com

FOR A FREE QUOTE.

also PRESSURE WASHING
OF PATIOS AND DRIVEWAYS



Quality Decorators

Over 15 years experience

- ∞ Interior and Exterior
- ∞ Hand Painted Kitchens
- ∞ Airless Spray System
- ∞ Free Quotations and Friendly Advice

Contact

01280 816699

07941 054 831

www.callinghams.com



Dulux
TRADE
Trade & Trusted

What's my house worth in Great Horwood?

If you want to know, get in touch with Ella Homes and Alexander & Co for your free, no obligation valuation.

We're working in partnership to cover more of your local area.

Aylesbury: 01296 710200

Bicester: 01869 324711

Buckingham: 01280 817400

Winslow: 01296 715386

ella

in partnership with

A
&

ALEXANDER & CO

www.ella.co.uk

www.alexanderandco.co.uk



WHERE FITNESS AND FUN

Come to Party!



In Person and Online Classes

Full Schedule and Information

www.jazzercisebbh.com

To book your spot, contact Keri
07900 987230 jazzercise1@hotmail.co.uk



Established 1990

Your Local
Window and Conservatory
Specialists
Products made to suit in
UPVC

From Design thru' to completion ...

01296 712151

Email: NandGwindows@aol.com

FENSA Registered

Local
**Musical
Theatre**
Classes

for ages
4 - 11



Be a star on stage and in life

BOOK A TRIAL CLASS TODAY AT

PWACADEMY.COM

07568 447 131 | 01296 733 258 | admin@pwacademy.com

**Peplow
Williams
Academy** of Theatre and
Performing Arts

D. Johnston

Heating & Plumbing Solutions

Boiler installations / servicing / repairs

Oftec registered oil boiler specialist

Gas safe registered

Landlord Safety Certificate

Full Central heating Installations

Under Floor Heating

General Plumbing

Power flushing

Pressurised hot water systems

Bathroom installations



www.d.johnstonhps.co.uk

Email: djohnstonhps@outlook.com

Tel: 01296 655169 / Mob: 07702 036217

Precise PVC-u Building Supplies Ltd

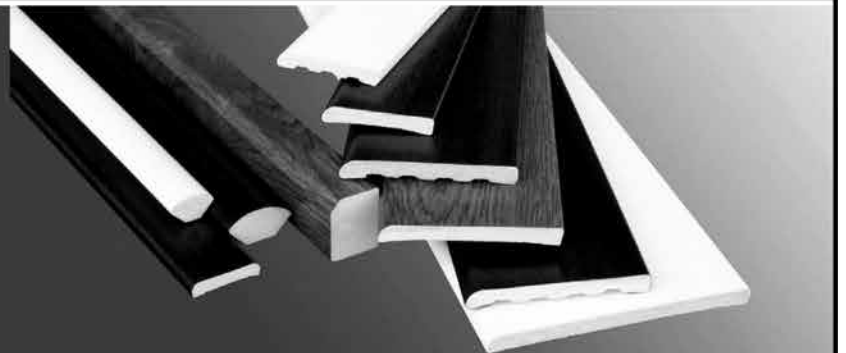
Suppliers of Building Plastics

Precise PVC-u Building Supplies Ltd is a family run company based in Bletchley, Milton Keynes. We are established since 2003 and pride ourselves on our friendly and informed customer service.



Our experience in the trade ensures that we supply the best quality PVC products to all our customers. We guarantee next day delivery on all of our stocked items. We are a supplier of a wide range of plastic building products. Many of our customers use our services like a manufacturers and suppliers as we can order any product that is currently not in stock.

We are suppliers for window fitters, builders, plumbers and DIY enthusiasts. Whether you're an individual who likes home improvements or a professional window fitter we are able to supply you with all the necessary materials. Come down to the industrial estate and see how we can save you and your company money on all your PVC supplies.



www.precisebuildingplastics.com

T: 01908 270 994 E: sales@preciseupvc.co.uk



Editor: David Brazier editor@ghfocus.com
Typing & Layout: David Brazier, Andy Gibbs.
Printing: Harlequin Press Ltd.
Copy deadline: 15th of month before publication.

Distribution: June Margerrison, Ann Biggins, Edwina Daymond, Louise Edwards, John Gilbey, Valerie Hancock, Duncan Hogston, Cathy Holland, Helen Jackman, Ian Lamberton, Gary Lee, Kathy Thompson, Sylvia Whitehall, Gill Wood.

Available online at: www.e-voice.org.uk/ghpc

IT'S BACK!

Plant Sale

SATURDAY 28TH MAY

10am – 12 noon & 1pm – 3pm

8 HIGH STREET, GREAT HORWOOD
(opposite St James' Church lych gate)

 Refreshments & Raffle 

ALL FUNDS IN AID OF ST JAMES' ROOF APPEAL






Join Us!




JOIN US!

Where do you want to go on Mondays?
 Don't you?
 We are an amazing group and we would love you to join us!
 We are a fun loving group and we would love you to join us!
GUIDES **RANGERS**

For more information, please contact Clare Martin on 01296 712034, 07501 636037 or claremartin71@btinternet.com or register online. Under 18s: <https://www.girlguiding.org.uk/information-for-parents/register-your-daughter/> Adult volunteers: <https://www.girlguiding.org.uk/get-involved/become-a-volunteer/>

join us for our

EASTER FETE

8th April 2022
1:30 PM - 15:15 PM
Great Horwood School

All welcome

External stalls | Games | Crafts | Tombola | Face painting | Cake sale | Refreshments



If you would like to have a stall please email greathorwoodpta@gmail.com

PARISH COUNCILLOR VACANCY

Great Horwood Parish Council has a vacancy and we would very much like to hear from any resident willing to become a co-opted member of the Council. If you care about our community, like meeting people and have some time and energy, you might be the person we need to fulfil this very important role.

Councillors represent the interests of the whole community and can contribute towards a wide variety of topics. Over the years, the Parish Council has devised a Neighbourhood Plan, commented on many planning applications, contributed to the management of Horwode Pece and the Village Hall and overseen the recent housing developments in the village.

As long as you are at least 18 years old, and either a British, Commonwealth or EU citizen, you can apply providing you are on the Electoral Register as a local government elector for Great Horwood and Singleborough, or have lived or worked in the Parish or within 3 miles of it for the whole of the 12 months prior to nomination.

Parish Council meetings are held in the Village Hall at 7.30pm on the 2nd Monday of every month except for January and August.

If you are interested, please contact the Clerk on the details below. An informal chat can be arranged with a Councillor to find out more.

Sue Brazier, Clerk to Great Horwood Parish Council
clerk@greathorwoodpc.org.uk