

Candleholders
Osterley Park
see article on page 16
Photo: John Stacey

Useful contacts
Chairman /
Membership Secretary
John Harris
020 8232 5663

**Treasurer / 100 club /
Coach trip bookings**
Doug as Craik
020 8977 0443
1-3 Fairfax Road
Teddington TW11 9AS
drcraik@netmail.co.uk

**Newsletter Editor /
London Visits**
(Mrs) Wier Hel Kipling
020 8640 5839
28 Alresale Road
London W5 4SD
whkipling@talktalk.net

Printed by:
Colomina (West Ealing)
020 8566 1155

The Friends of Osterley Park



in support of **National
Trust**

NEWSLETTER

Issue 93 SUMMER 2014 £1 (free to members)





The Friends of Osterley Park

National Trust

AUTUMN RECEPTION

SPEAKER: NIC DURSTON

NT ASSISTANT DIRECTOR (OPERATIONS)
LONDON AND SOUTH EAST REGION

LONDON PROPERTIES



Wednesday 1 October 2014



Doors open 7pm

Meeting starts 7.45pm

100 club
draw

Old Brewhouse, Osterley Park

Jersey Road, Isleworth TW7 4RB

Car Parking in the Stable-Yard Please come early
Park Gates closed from 7.30pm until after the Meeting



from the Chairman John James

Chairman's Report to AGM 2014

In reporting on 2013 I would first like to thank all of you for your continued support as members of the Friends.

As a charity our main purpose is to support the work of the National Trust and its programme of conservation and improvement at Osterley Park and House. We have continued to con-



tribute regularly. In particular there has been a donation of £2,700 to assist interpretation projects for the Jersey Collection. The return of the paintings and furniture, including family portraits, to Osterley Park as a ten year loan by the Earlom of Jersey Trust has attracted great interest.

At the first committee meeting of the Trustees after the [2013] AGM, I was elected Chair and Membership Secretary, Douglas Craik Vice-Chair and Treasurer and Patricia James Honorary Secretary (responsible for minutes).

Our activities have been well supported. Our trips, carrying on the legacy of Jim Tickle, are now organised by a Trips Group led by Douglas Craik, with Patricia Barrett, Peter Bush, Margaret Friday, Pat Herod, James Law, Angela Lynskey, John Stacey and Barry Pyle. There have been visits to interesting places such as Ightham Mote, Anglesey Abbey, Claydon, Lacock Abbey, Mapledurham, Uppark and Basildon Park. We are so lucky to be within reach of such outstanding properties. London visits, organised by Wei Hei Kipling, have been to the Royal College of Music, Sir John Soane Muscum, 575 Wands-

(Continued on page 4)

Chairman

(Continued from page 3)

worth Road, Bank of England Museum, Thames Police Museum, the Geffrye Almshouses (see below) and gardens, National Gallery for the exhibition "Vermeer and Music", Ragged School Museum, Fulham Palace and the Museum of Brands.

Photo: Wei-Hai Kiang



Our visit to the Old Farmhouse, courtesy of Patrick and Christine Howard, was in June and the gardens were splendid.

Our coffee mornings, held in the Brewhouse, have proved popular. Each coffee morning has a speaker. Judith Evans gave a talk on 26 February on her work "Real to Reel"; on 9 April Jeremy Dalton, Head Warden, spoke on "Threats to London Trees"; on 11 June John Stacey with his presentation entitled "Osterley through my Lens"; 30 July was my talk on my Olympic 2012 journey; on 10 September Megan Tanner on Commercial Services, which was summarised in our winter newsletter; and on 22 October Neil Cole gave us an update on activities and news

(Continued on page 6)



The Friends of Osterley Park

COFFEE MORNING

WEDNESDAY 10.30 FOR 11 AM

Old Brewhouse, Osterley Park

Jersey Road,
Isleworth TW7 4RB



3 Sept	Sheena Dickson Sports Development Officer at Osterley
22 Oct	Ellie Jones newly appointed House and Collections Manager
19 Nov	Kelly Wood, Events Manager all things Christmas at Osterley

Tickets at the door
Friends: £3
Non-members £4

Tea / Coffee
and biscuits





of projects at Osterley Park. On 26 November Elizabeth Kaye, Property Administrator, talked about her early life in theatre administration, then as part of the London Organising Committee of the Olympic Games in the cultural department and then her present role at Osterley Park.

Our Autumn Reception on 2 October was well attended and we had a talk given by Miranda Poliakoff, Curator of the Museum of Fulham Palace *(see photos from gardens of Fulham Palace: tree sculpture left and cat from sculpture below).*

The Friends had stalls at St. Mary's Church Osterley Summer Fair, Osterley Park and House weekend and Jersey Gardens Summer Fair in September.

A very successful Teddy Bears parachute jump was held on 4 August, organised by Douglas, assisted by Kelly Wood and a group of volunteers.

The newsletter, published four times a year is an important means of communication with our members. I wish to thank Wei Hei Kipling, our editor, for her excellent work. I would also like to thank John Stacey for his exceptional photographs and Margaret Friday for her fascinating articles.

We keep a close link with the National Trust as a supporter group. Douglas and I attended the South East group conference at Basildon Park in October and Patricia and I attended the National Trust AGM, also in October, in Cardiff which was the first meeting for Dame Helen Ghosh, the new Director General.

I recently had a message from Vivien Tobbitt who is the Supporter Groups Business Support Contact for the National Trust. She said "Please pass on our sincere thanks to your members at the



AGM for their continuing support. We know donations are the result of a lot of hard work on the part of your committee and the generosity of your members. Please give our very best wishes to your members and my warmest thanks for everything achieved."

The Hounslow Community Network has about 100 members, runs free training courses for people in the voluntary sector and organisations can turn to it for advice. Michael Doran is our representative on the Network. Mike was in a Network working group, setting up a list of priorities for the year ahead. His list won the competition and he won £50 in Marks and Spencer vouchers. He donated the vouchers which have been used for wine and soft drinks for this evening. Many thanks to Mike.



Finally, I would like to thank my fellow Trustees for their support: Douglas as Vice-Chairman, Treasurer, organiser of the 100 Club and leader of the Trips Group, Wei Hei as our newsletter editor and London Visits organiser, John Stacey our photographer, Margaret Friday our article writer, Michael Doran our link to the Hounslow Community Network Group, Joan Mound for her support in manning our event stalls and Patricia as our secretary. My thanks also to Neil for his continuing support, his attendance at our committee meetings and congratulations to him on his promotion to General Manager. Last but not least, my thanks to Ian Conacher as our President.

(Continued on page 8)

Report on the AGM held on 14 May 2014

The minutes of the AGM held on 15 May 2013 were agreed as a true and accurate record of the meeting.

The Chairman's report was presented [see pages 3,4, 6 and 7]. The certified accounts for year ending 31 December 2013 were adopted.

The following were elected as Trustees: Douglas Craik, Michael Doran, Margaret Friday, John James, Patricia James, Wei Hei Kipling, Joan Mound and John Stacey.

Patricia Barrett was appointed as Independent Examiner of the Accounts.

The membership subscription will remain as £10 for one person and £16 for two people at the same address.

A report was given on the 100 Club and the 1st draw of the 2014/15 season was made.

**Elections**

In accordance with the Constitution, at their first meeting after the AGM held on 27 May, the Trustees elected the following:

Chair – John James

Vice-Chair – Douglas Craik

Treasurer – Douglas Craik

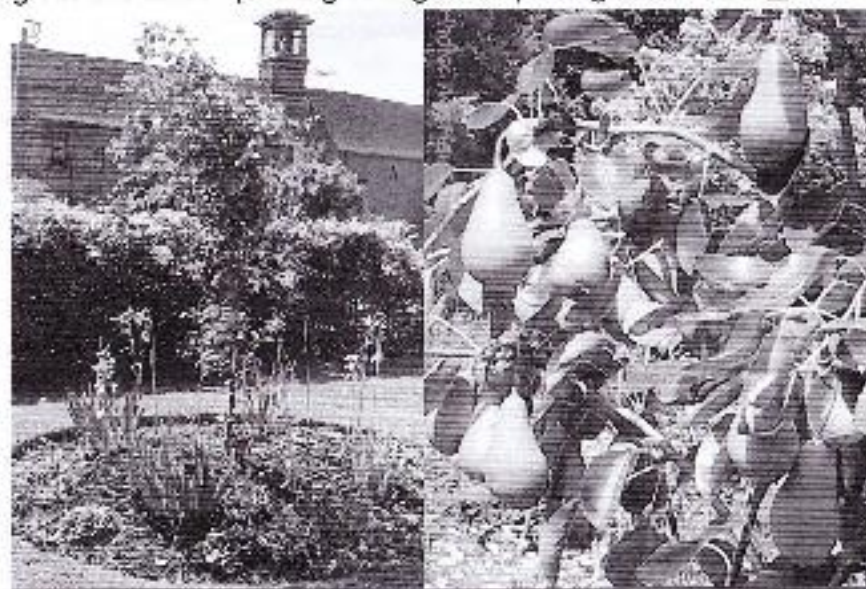
Hon. Secretary – Patricia James

Membership Secretary – John James 🍷

Jim Tickle's legacy

Friends at the AGM were the first to hear the announcement of Jim Tickle's legacy from Neil Cole, General Manager. Jim has left an amount of the order of £200,000 to the National Trust at Osterley Park and House. In view of the size of the legacy, the Property is considering a number of different options. Preliminary suggestions have already been mentioned to the Friends Committee and proposals will be taken forward in consultation.

Meanwhile, the pear tree (see below) planted in his memory only last April has been growing very well and already has a good number of pears growing and ripening in the sun. 🍷





Coach Trips

Douglas Craik

As we have had 2 trips fully booked so far this year, I feel you would like to know what I do in this case.

Once fully booked I set up a waiting list and as cancellations come in I add-in by order of booking, sometimes I need to wait until there are 2 cancellations if the first on the list is a couple. Also as it is quite common for a few people not to turn up on the day I do offer those on the waiting list the option of just turning up at the car park and if a vacancy occurs then paying the trip leader. This latter option is only realistic for those who live close to Osterley and so don't mind a potential wasted trip. However it does occasionally work and so someone gets on a trip that they could have missed.

We still have plenty of seats on the August trip. Information about the August coach trip was provided in the Spring 2014 issue of the newsletter. For more details about the destinations, please contact the organisers below. Booking for the October visit opens with this newsletter (information on page 13).

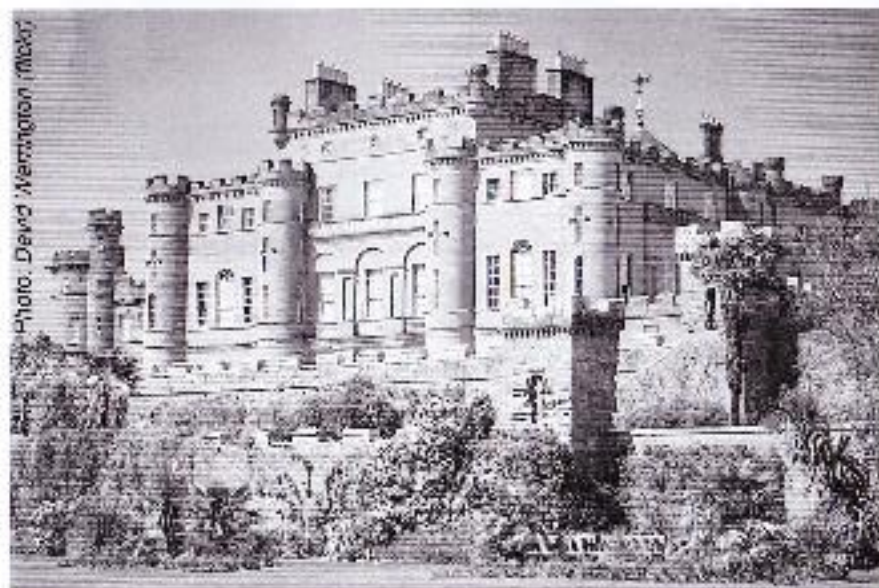


Photo: David Warrington (Mick)

2014 Holiday

This year's 5 day tour is still very under-booked but will go ahead. The **balance of the booking (£285 or £250 if sharing) was due on 1 July.**

Contact details

Ticket availability Douglas Craik 020 8977 6449

12 Aug Living Rain Forest / Grey's Court

Angela Lynskey 01784 886280

10 to 14 Sep Birmingham Barrie Pyle 020 8840 2088

7 Oct Canons Ashby Peter Bush 020 8560 9296

We have already started on the 2015 programme.

2015 Holiday

We have two options for a holiday to Scotland 6 day/5 night (passports not be needed no matter what the coming vote is).

1. Early September using the National Trust's recommended company (Just Go) to run a Friends of Osterley Park holiday. This will involve a coach run from Osterley to Cumbernauld (between Glasgow and Edinburgh) and a half board stay in a 4 star hotel. Roughly estimated cost would be about £650 single based on 30 people. This is not possible with less than 30.
2. Mid-August (to miss Bank Holiday), using my services to organise, this would involve a coach trip from Osterley to Euston Station, train to Glasgow, coach to Glasgow student residence (single ensuite). **Very** approximate cost £500 single based on 30 people. NB we might be eating in a different Glasgow restaurant each night which would involve taxis or a little walking but cost includes £25/night for meal. This could go ahead with any number but lower than 30 increases cost a bit and vice versa .

In either case the **draft** programme is

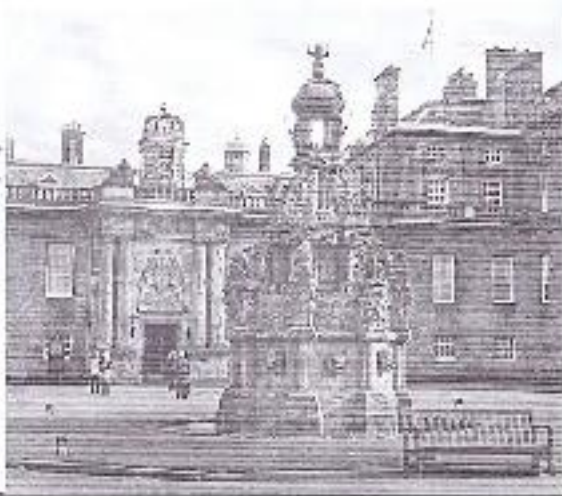
Day 1 –travel to Scotland

(Continued on page 12)

Day 2 – Ayrshire; Culzean (pronounced Kulzayn, see page 10) Castle; Rabbe Burns Birthplace exhibition
 Day 3 Glasgow; Pollock House (country mansion); Burrell Collection (world famous eclectic collection of one very rich man); Tenement House (Victorian flat furnished as 1920's), drive round city centre;
 Day 4- Stirlingshire: Falkirk wheel, a short trip on a canal boat that (along with 200 tons of water) is raised 115 feet from one canal to another (see page 27); Bannockburn battle exhibition.
 Day 5- Edinburgh: Georgian House, a Robert Adams city mansion; Gladstone's Land a 17th Century town house on the Royal Mile close to the castle. Drive down the Royal Mile past the Scottish Parliament and the Palace of Holyrood House (below).
 Day 6- travel home to Osterley

The additional cost of entry to the 7 National Trust for Scotland (NTS) properties is £46 (£60 if under 60). National Trust members get free entry (volunteer cards do not). It will definitely be worthwhile joining the National Trust or National Trust for Scotland. Annual membership of the NT is £58, for NTS is £38 (£52 if under 60) reduced to £29 (£39) for first year if paid by direct debit.

I really **need an early indication** (phone/email/post) from anyone interested please indicating whether option 1 or 2, in order to decide whether to go ahead with this. Contact details on back cover. If this does go ahead there will be booking details in the Winter Newsletter.



The Friends of Osterley Park NEWSLETTER

Canons Ashby

Peter Bush



Our final visit of the year, on 7 October, will be to Canons Ashby which is in Northamptonshire, 82 miles from Osterley. From 1551 it was the home of the Dryden family for four centuries, being developed from an L shaped farmhouse by many additions notably in the 1590s and in 1708 and 1717 becoming the house which is there today. In 1717 Edward Dryden inserted the family motto "Antient as the Druids" on the drawing room overmantel. Outstanding features include 17th century Flemish tapestries and Jacobean plasterwork contrasting with the domestic detail of the servants' quarters. The house is set in 18th century formal gardens lovingly recreated by the National Trust. St Mary's Church built in 1250 is the sole remaining remnant of the Augustinian Priory that gives the area its name.

The stables tea-room provides snacks and light lunches. The second hand bookshop is outstanding.

We leave at 9.30 with a comfort stop at Oxford Services.

Coach cost: Friends / Volunteers £17; Guests £18

Canons Ashby entry fee: NT members free, non-NT £7

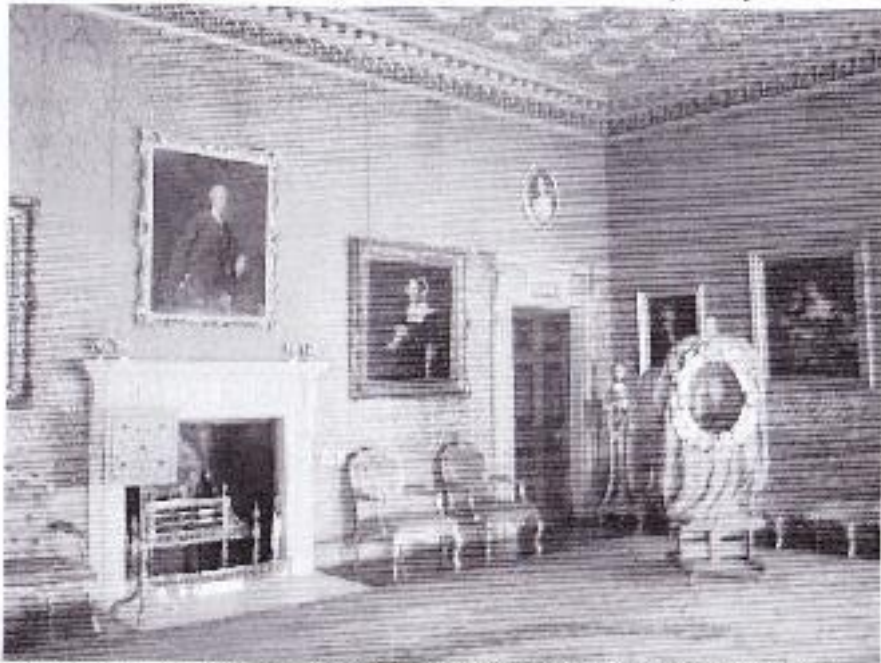


Bluciohr and Candle holder on Drawing Room Mantelpiece, Osney Park, London Photo John Stacey See article on page 16

Matthew Boulton and Bluejohn

(see photos on cover and centre spread) Margaret Friday

The beautiful photos featured in this issue showing the exquisite candle vases and ormolu jars made of bluejohn were taken by John Stacey. They have recently been returned to Osterley by the 10th Earl of Jersey and have an interesting story.



Drawing Room July 2014 with items from the Jersey collection including the candle vases and ormolu jars on the mantelpiece. Photo: Vrei Hui Kipling

The name *bluejohn* comes from the French name for coloured flourspar: *bleu jaune* or blue yellow, the main shades of this material. The English simply transliterated the name as *bluejohn*. Having studied the French use of *bleu jeune*, Matthew Boulton attempted to lease all of the bluejohn mines in Derbyshire in 1768 from a fellow member of the Lunar Society, John Whitehurst. He was unsuccessful but did manage to purchase 14 3/4 tons or 14,263 kilograms of fine bluejohn. He also commissioned agents to purchase any "very large, very good or very

beautiful pieces which might be found" says Nicholas Goodison in *Ormolu Ornaments*.



Wikimedia
Artist: Carl Fredrik von Breda

Matthew Boulton (see left) was looking for a material to use in making candle vases, candle holders and perfume burners for his wealthy patrons. He studied Josiah Wedgewood's processes for making ceramics and was so impressed he thought of taking up the making of pottery himself. Wedgewood wrote "it doubles my courage to have the first manufacturer in England to encounter with".

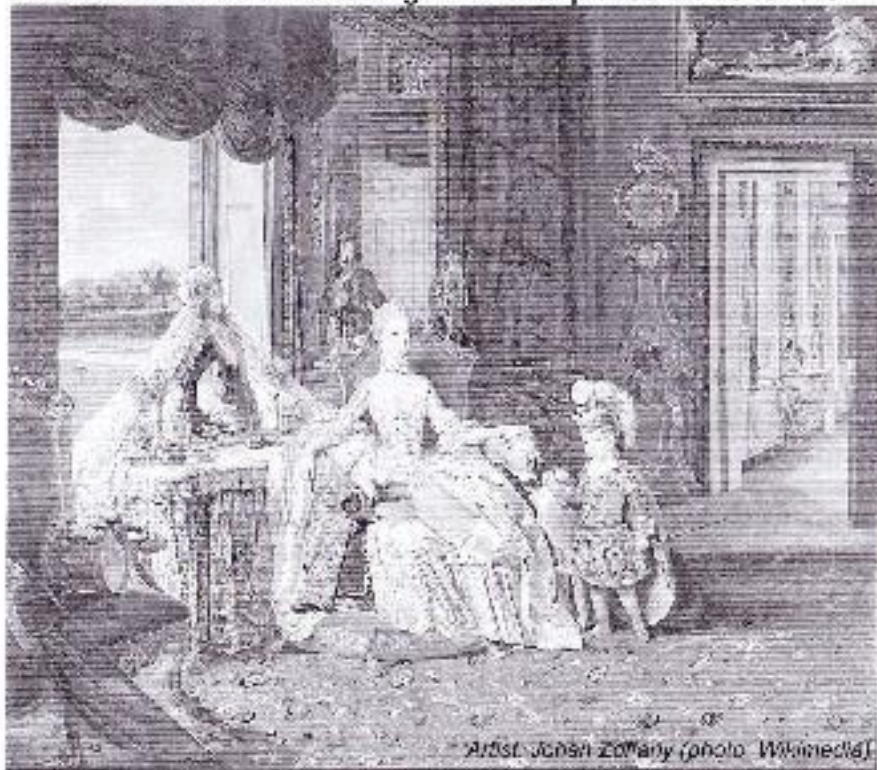
As Boulton wished to make candle vases, candle stands and perfume burners he decided to use enamel and gilt copper on bluejohn and marble

as these could withstand heat better than pottery. Despite rumours at the time, no ceramic pieces using Boulton's metalwork have ever been found. Boulton and Wedgewood (see right) were both members of the Lunar Society and amused themselves by commenting on their industrial rivalry. (These comments from *Matthew Boulton: a revolutionary player* edited by Malcolm Dick.)

(Continued on page 18)



An account in *The Hardware Man's Daughter: Matthew Boulton and his 'Dear Girl'* by Shena Mason reveals that Matthew Boulton was invited to Buckingham House in March 1770 to meet Queen Charlotte (see below with her two sons in Buckingham House). George III had purchased the house in 1762 and it was a favourite with the queen. The audience lasted three hours and the Queen took Boulton to her bedroom where she explained that she wanted all of the ceramic pieces on display at the sides of the fireplace and on the mantelpiece to be replaced with ormolu and bluejohn. Boulton wrote to his wife asking her to tell his works manager John Scale to send him "immediately 7 or 8 good vases for ye Queen, for lower part of her chymney piece...Blew John...as I was made to promise they should be delivered in less than a fortnight". Some pieces made for the



Artist: John Zoffany (photo: Wikimedia)

Queen were based on designs by William Chambers including the "resplendent King's candle vases, made of large pieces of veined bluejohn and almost certainly the pair of sphinx vase perfume burners" to quote Nicolas Goodison.

The first of three sales of Boulton's goods at Christie's took place the following month and Boulton wrote to his wife that "I made so great a bussle amongst the nobility even to such a degree as to stop up Pall Mall with coaches". Attending auction sales was a fashionable way of finding amusement in the 18th century.

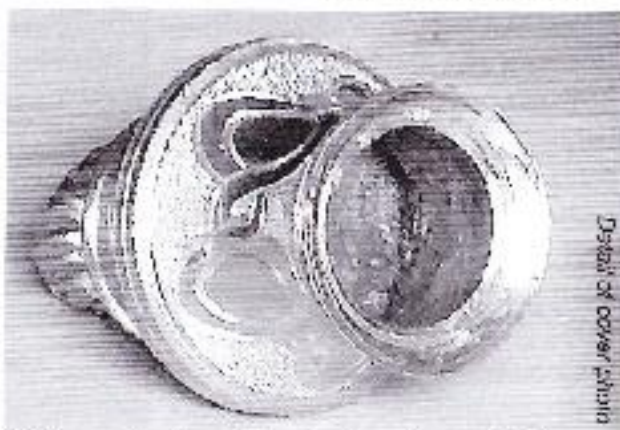
Osterley Park House has many fine lamps (see above) and marble vases by Matthew Boulton as well as the exceptional door furniture (below) ordered by Robert Adam from Boulton.

(Continued on page 20)



Matthew Boulton

Bluejohn was probably introduced to Osterley by Robert Child. In April 1772 he visited an exhibition of Matthew Boulton's works in London and purchased the winged bluejohn




Detail of cover/John

vases and the double branched candle stands along with the candle vases now returned to the mantelpiece in the drawing room. Robert Child paid £29/8/- for these exquisite examples of bluejohn.

Look closely at the pictures and you will see how the candle vase works. The top of the vase is removable (*see cover, above and below*) and has two positions. In one position, when the candle vase is being used as a candle holder, the top provides a recess to hold the candle and some wax can still be seen in the recess (*see above*). In the other position (*see below*), the top provides a stylised flame decoration so that the



Photo: John Stacey

candle vase is displayed as an elegant small vase proving that it is just as Matthew Boulton planned - useful as well as beautiful - a treasure designed to please the eye. 

(Continued from page 19)




from the Treasurer

Douglas Craik

Membership and Standing Orders

There have been a few problems with changing Standing Orders to the new membership rates. Some members didn't update their Standing Order so only paid the old rate and some did send me a new Standing Order but their bank failed to apply it. John James is contacting all those concerned.

One member has had the annual membership paid monthly by her bank! Hopefully this will also be soon resolved. 

from the 100 Club

The 100 club continued with a draw held at the AGM, the lucky members were

J Shaw (£100), P Howard (£40), SE Haisman (£20). There are slightly fewer members so far this year so we may have to slightly reduce the future second and third prizes. The next draw will be at the autumn reception.




Rather surprisingly out of the 63 prizes over the last 5 years twelve people have won twice and 4 people have won three times - so good luck can strike twice (and thrice) unlike lightning.

As you know, half of the money from the 100 club is used for prizes whilst the other half is used to fund projects at Osterley. There are three draws to come and membership is available for £9 per share for the rest of this competition. If anyone wishes to join, rejoin or increase their holding in the 100 Club, please send your cheque made payable to "Friends of Osterley" to:

Douglas Craik, 118 Fairfax Road Teddington TW11 9BS

with your name, address and telephone number and an SAE for your membership card and the rules of the competition.

Please note that the 100 Club is a private lottery and so shares can only be allocated to paid up members of the "Friends". 

from the Property

Staff changes

Claire Reed, House & Collections Manager, departs Osterley to start her new career as a Curator within the National Trust in July; Claire started at Osterley in August 2011 and has made a significant contribution in raising not only the profile of the collections at Osterley but also within the wider community, especially with regards to the East India Company exhibition.

Kirsty Brown, Assistant House Steward, departs Osterley at the end of July.

Ellie Jones joins Osterley Park on 1 September as our House & Collections Manager; Ellie is currently Conservation and Engagement Manager at Berrington Hall, National Trust.

We also welcome **Lee Retallick**, **Andrew Smith** and **April Johnson** to the team at Osterley Park. 🏡

Lacquer restoration

In the middle of July, Tankerdalc was conserving the Chinese export eight leaf lacquer screen in the Breakfast Room. .

The approach has been to conserve the damage by recreating the look of aged lacquer—new lacquer would look odd against the original aged material—using western materials in a process which is both reversible and identifiable. The main damage was to the end panels and also to the bottom of the

screens. There have been other interventions; the original panels were taller but lower sections have been removed to reduce their height. The hinges between the panel are in good condition being “only” 100 years old. 🏡



Photo: Wei Hai Kipling

Below stairs

all photos Wei Hai Kipling



The family entrance (see left) is currently only being used as a passageway but some very important dust monitors are present on the table in the corner. The area is being monitored to see if the environmental conditions will allow it to be used

as a showroom. In the 1782 inventory, it was the location for the armorial lacquer furniture which has been returned to Osterley as part of the Jersey collection.

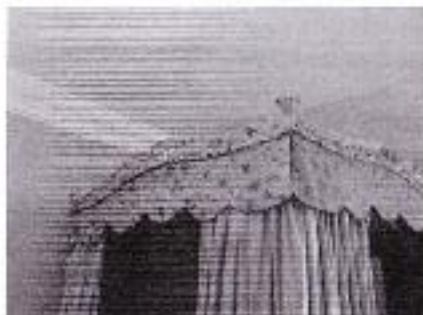
With the property being open practically every day, the amount of dust falling in a year is being monitored in the steward's room

The current exhibition in the Jersey Galleries is ‘Exploring the Stores’ with a selection of artefacts which are interesting but difficult to display and interpret in the 18th century interiors.

One example is one of a set of six chair covers (see right)



shown in a display case so that the fine embroidery can be seen close-up. The covers originally furnished Mr and Mrs



Child's bedroom and complemented the bed hangings (at top of bed, see left) and matching festoon curtains but the almost 300 year old silk has become incredibly fragile and is now kept in store in a carefully regulated environment. 🏡

Running at Osterley

The first Osterley 10k race, organised by Ealing Half Marathon, took place on Saturday 21 June with a field of 361 runners. The route took various loops around the park and out onto Jersey Road



with a lap of the Long Walk at the back of the House. Feedback has been very positive, particularly commenting on the beautiful surroundings as well as the clockwork organisation.

Osterley parkrun continues from strength to strength. 958 different runners have now taken part since 31 August 2013 (including Neil Cole on 5 July) with 50 to 100 each Saturday. 🏃

Parateddy bears

To prepare for his first parachute jump on Osterley weekend, Bear Supporter had to have a medical and be weighed. After he had put on the correct size of parachute, he went up in the lift to the roof (see right). He successfully completed two jumps (see right below). Another paratrooper was not so lucky and had to be rescued from the wisteria (see left).

all photos Wei Hei Kipling



The poor weather resulted in a very low



number of visitors so Friends only made £100 on this year's parachute jump. Many thanks to the numerous Friends who manned the stand for a lot of inactive hours. Let's hope for better luck with the weather next year. 🏃



London Visits

Wei Hei Kipling



Our first visit of the autumn will be to the **Apothecaries' Hall** in September. This is the oldest extant livery company Hall in the City, with the first-floor structure and arrangement of the Great Hall, Court Room and Parlour remaining as re-built between 1668 and 1670 after the Great Fire of London. An 'Elaboratory' was included for the first ever large-scale manufacture of drugs. A major restoration and building programme was carried out in the 1780s, in part because of the huge expansion in the pharmaceutical trade operations at the Hall. Although the Hall underwent major re-development in the 1980s, its external appearance has altered little since the late-eighteenth century. **Booking deadline 23 August** Cost: £13 (£10 per person to Apothecaries Hall, min 10 people; remainder to Friends). Meeting arrangements: Tuesday 2 September 10.45am at Blackfriars tube station to walk to Apothecaries' Hall, Black Friars Lane EC4V 6EJ for 11am tour.

October will take us to the **Royal Institution** of Great Britain, famous today for its Christmas Lectures. The RI was founded to introduce new technologies and teach science to the general public through lectures and demonstrations. Humphry Davy, one of the first Professors, established scientific research as a crucial part of the RI's identity, something never envisaged by the founders of the institution.



(Continued on page 26)



from the Editor

Apologies for the late issue of this newsletter though it has given Douglas Craik time to expand his thinking about the 2015 holiday (see pages 12 to 13). On the London Visits, I can report that the Van Dyck appeal passed its target before Friends went to the National Portrait Gallery so I decided to retain for Friends the proportion of the visit price which we would otherwise have donated to the Appeal. Following the Moor Park visit, I have also had second thoughts about the practicality of London Visits which are totally reliant on car transport. The White Lodge arrangements worked because there was the option of public transport plus shuttle bus in addition to cars. In contrast, several people were unable to go to Moor Park because I did not have enough car drivers.

London Visits

(Continued from page 25)

Over the last two centuries the building and labs have been home to famous scientists, such as Michael Faraday, who made discoveries here (relating to electricity) which have helped shape the modern world.

Our tour will cover elements of the history and architecture of the building as well as telling the stories behind some of the exhibition displays. Tours usually commence on the first floor where the displays relate to the theme of communication and, unless it is in use, include a visit to the historic large lecture theatre where the Christmas Lectures are recorded. The ground floor deals with various aspects of the Royal Institution's activities, past and present, whilst the lower ground floor is devoted to the history of scientific discovery in the building. **Booking deadline 26 September** Cost: £13 (£10 to RI including refreshments, remainder to Friends). Meeting arrangements: Friday 3 October 10am at Green Park tube station (in the entrance hall on the north side—for Royal Academy etc) to walk to The Royal Institution of Great Britain, 21 Albemarle Street W1S 4BS for 1 1/2 hour tour starting at 10.30am

from the Diary

Friends Events and Excursions

- Tue 12 Aug Coach trip: Living Rain Forest / Greys Court
- Sat 23 Aug **Booking Deadline Apothecaries Hall**
- Tue 2 Sep London Visit: Apothecaries Hall
- Wed 3 Sep Coffee Morning: Sheena Dickson
- Wed 10 to Sun 14 Sep Coach holiday: the Midlands
- Fri 26 Sep **Booking deadline Royal Institution**
- Wed 1 Oct Autumn Reception
- Fri 3 Oct London Visit: Royal Institution
- Tue 7 Oct Coach trip: Canons Ashby
- Wed 22 Oct Coffee Morning: Ellie Jones
- Wed 19 Nov Coffee Morning: Kelly Woods

For more information:

Coffee mornings—see page 5

Coach trips and holiday—see pages 10 to 13

London Visits—see pages 25 and 26



Coach holiday 2015—see pages 11 and 12

Expressions of interest to Douglas Craik ASAP

Next newsletter due to be published Sept / Oct 2014.

Any contributions to the Editor by **1 September 2014**.

The Editor may change or reduce contributions if necessary.