

The Friends of Osterley Park

NEWSLETTER



in support of **National
Trust**

Issue 88 SPRING 2013 £1 (free to members)

Useful contacts

Chairman / Membership Secretary

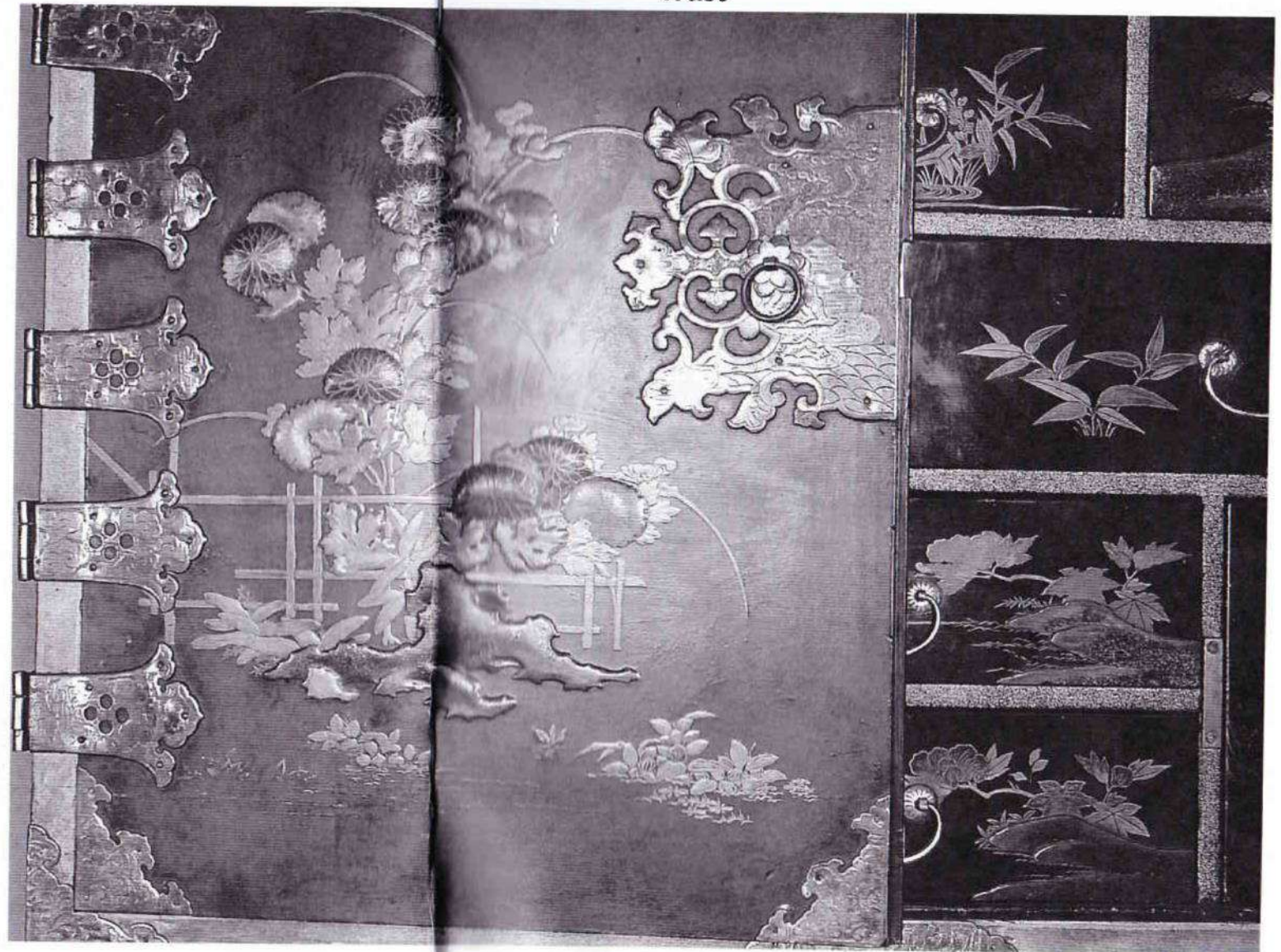
John James
020 8232 8683

Newsletter Editor

(Mrs) Wei Hei Kipling
020 8840 5939
28 Airedale Road
London W5 4SD
whkipling@talktalk.net

Japanese lacquer cabinet
Mrs Child's dressing room
Osterley Park
see article on page 14
Photo: John Stacey

Printed by:
Colormax (West Ealing)
020 8566 1155





The Friends of Osterley Park

ANNUAL GENERAL MEETING



Wine will
be served



1st draw
"100 club"

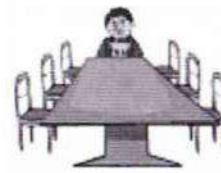
WITH TALK AND SOCIAL

Old Brewhouse,
Osterley Park
Jersey Road, Isleworth TW7 4RB

Wednesday 15 May 2013

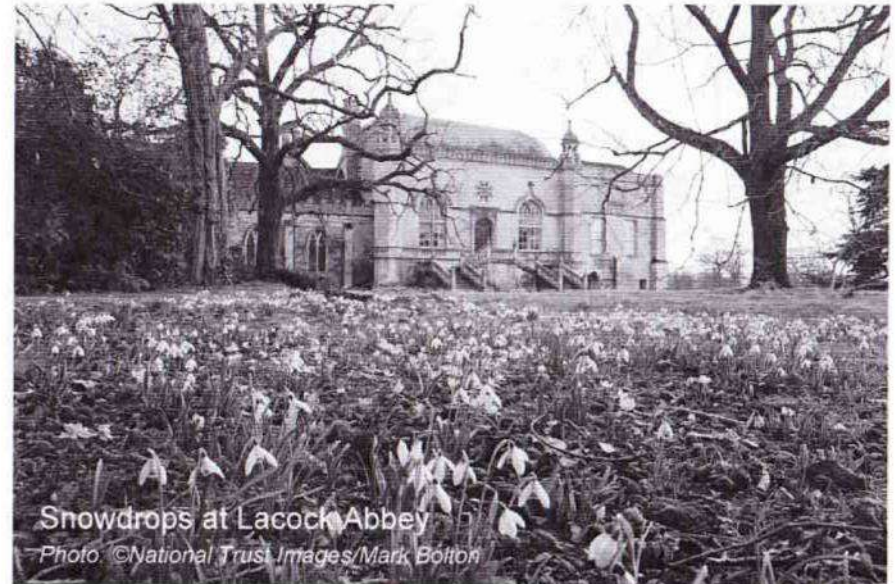
Doors open 7pm
Meeting starts 7.45pm

Car Parking in the Stable-Yard Please come early
Park Gates closed from 7.30pm until after the Meeting



from the Chairman John James

At the time of writing we are still in the grip of winter, very cold, icy and wet. Snowdrops are now fading, daffodils are struggling to flower and trees are slow to come into bud. Without doubt this has been a long, hard winter for us all and spring is late in arriving.



Snowdrops at Lacock Abbey
Photo: ©National Trust Images/Mark Bolton

Just before we went to print with our last newsletter we heard of the death of Jim Tickle. Jim was a dear friend to so many members of the Friends and volunteers. He loved Osterley House and Park. He will be greatly missed.

(Continued on page 4)

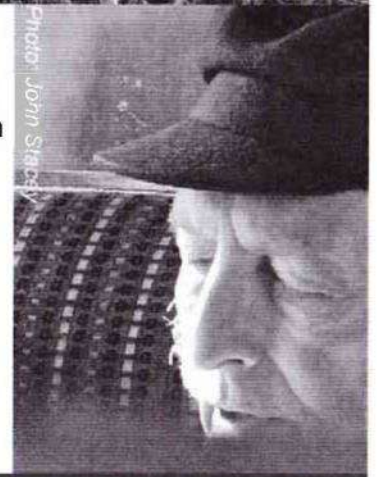


Photo: John Stacey

Chairman

(Continued from page 3)

John Stacey was due to give us his presentation "Osterley through my Lens" at a coffee morning on 21 February. Unfortunately there were technical problems, so this will now be given on 11 June. Judith Evans stepped in at the last moment and gave an excellent presentation on her work "Real to Reel" (photo below taken from related exhibits). There will be further coffee mornings on 9 April (with Jeremy Dalton, Head Warden), 30 July and 10 September.

As your Chairman, I was invited to attend the Volunteers' Forum, which brings together staff and volunteer leaders. The Forum meets regularly to discuss ways of communication and for an update on activities and future plans.



Our A.G.M. takes place on Wednesday, 15 May at 7.45pm, with a reception from 7pm. We do hope as many Friends as possible will attend. There are vacancies on the committee,

and if you are interested in taking on a role, such as Membership Secretary or Publicity Officer, do please get in touch with me.

We are keen to increase membership of the Friends. Do consider introducing a friend, perhaps by bringing them to a coffee morning. ☺

Wikimedia



The Friends of Osterley Park
 in support of National Trust

COFFEE MORNING
10.30AM FOR 11AM
 Photo: John Stacey

| | |
|---|--|
| <p>TUE 11 JUNE JOHN STACEY</p> <p>"Osterley through My Lens"</p> | <p>TUE 30 JULY JOHN JAMES</p> <p>The Olympics</p> |
|---|--|

Tea / Coffee and biscuits

**Old Brewhouse,
 Osterley Park
 Jersey Road,
 Isleworth TW7 4RB**

Tickets £3 at the door

Membership Subscriptions Douglas Craik



At the 2013 AGM, there will be a motion to increase the annual subscriptions for the Friends of Osterley Park from 1 April 2014.

Currently the cost is £8 for one person and £14 for two people at the same address

It is proposed to increase the cost to £10 for one person and £16 for two people at the same address

A major part of the costs of running the Friends is the printing and distribution of the Newsletter, roughly 75% over the last 4 years. This is why the subscription for two people at the same address (and therefore one Newsletter) is set at a lower level than double the single membership.

The subscription was last raised in April 2010, having been agreed at the 2009 AGM, and, as you will be well aware costs, particularly postage, have increased considerably since then.

As any change in Subscription will involve a re-signing of Standing Orders and a replacement of membership application forms, the Friends' Committee believes that it is best to have infrequent increases, though this means each will be a step change catching up on several years of inflation.

If this is agreed the new rate will apply to membership subscriptions next year.

Also, all members will again be invited to make future payments by Standing Order. Those already paying by Standing Order will be invited to sign a new agreement to replace the existing Standing Order. New Standing Order forms will be distributed in a Newsletter later in 2013. 📄

from the 100 Club

Douglas Craik

The final draw for the current competition was held at the coffee morning on 6 April.

Congratulations to the winners who were:

£ 20 Mrs P Herod

£ 40 Mr D Blackett

£100 Mr J Shaw



In 2012 we paid out slightly less than half the subscriptions received as one prize was donated back to the Friends and two subscriptions were received after the last draw (but this entitles them to take part in the 2013 draws). However we did pay out 12 prizes including four of £100.

The number of shares fell from 136 to 127, I am sure we all like a little flutter even in the times of austerity so when renewing your membership subscription please think of taking out one or more shares in the 100 Club, not only will you have a chance of a prize but you will be adding to the money we can donate to the House.

Some Friends have elected to pay both "Friends" annual subscriptions and 100 club membership by standing order and will receive a letter. Those paying by standing order may buy more 100 club shares by sending a cheque payable to "Friends of Osterley" to:

John James (Membership Secretary, Parkfield Cottage,
Osterley Road, Isleworth, TW7 4PF)

with your name, address and telephone number and an SAE for your membership card and the rules of the competition.

Those paying by cheque can use one cheque for 100 club shares and "Friends" annual subscriptions and a form for both is enclosed. The first draw of the new competition is scheduled to be held at the "Friends" AGM in May. Please note that the 100 Club is a private lottery and so shares can only be allocated to paid up members of the "Friends". 📄

Teddy Paratroopers

On 4 August, there will be a Parachute jump from the roof of Osterley House for teddy bears (or any stuffed toy) belonging to visitors to Osterley.

Visitors (or their children) will be invited to donate £2.50 to have their furry friend launched from the roof to drift (hopefully safely) to the ground under a parachute made by your treasurer (so cheap and cheerful 'chutes). There are four sizes of parachute for different weights of bear.

Each teddy bear, or their human companion, will receive a certificate that he/she had completed this arduous task.

The event will be advertised in all local primary schools and more details will follow in a later newsletter.



A test jump was made in early and windy March (*see photos*). The test subject was a lamb—so she was a woolly jumper. I organised a similar event last year in support of the Forces charity SSAFA and over 200 bears made the jump at Croydon Fire Station and great fun was had by all 700 paying spectators.

Ed's note: I take no responsibility for the pun in this article!



Douglas Craik



Photo: Douglas Craik



The Friends of Osterley Park
in support of National Trust

Old Farmhouse, Osterley

2.30pm Sunday 16 June 2013



Photo: Her Kipling

On Sunday 16 June, the Howards will once again be opening the gardens of the Old Farmhouse for us to visit and enjoy.

Please meet 2.30pm at the Old Farmhouse, Osterley Lane.

Directions from Norwood Green (cars or pedestrians) – go down Osterley Lane; cross the motorway bridge; turn right through the grey gates with the sign to Osterley Park Farm; walk on drive and through black gates to the Old Farmhouse.

Directions from Osterley House – take path from stableyard, past public toilets; turn left on to Osterley Lane; turn left through grey gates with the sign to Osterley Park Farm; walk on drive and through black gates to the Old Farmhouse.

To give the Howards an idea of numbers, please inform John James if you would like to attend

at the AGM on 15 May

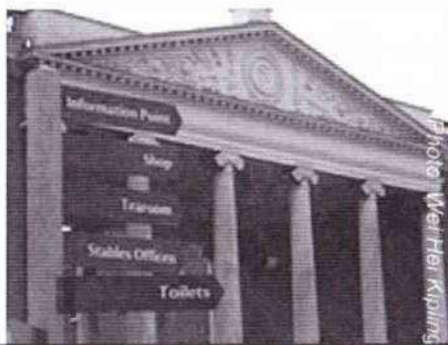
by phone 020 8232 8683

by email john.james15@blueyonder.co.uk

from the Property

Where am I?

There were good clear signs giving me directions when I went to Osterley recently. 📷



And what am I looking at?



Photo: Wei Mei Kipping

The new audio-visual guide (see left) at Osterley is controlled more in the way of a smartphone than the old one. In addition to the tours available previously, it is possible to go directly to the information about a specific room.

The guides are available from the Eating Room. Currently, the stack is located on a table behind the service door which is left half ajar but it is eventually hoped to provide wheeled storage which can be easily moved in and out as required. 📷

The Cedar play trail

Over the winter months, the wardens have been busy creating a natural play trail. The materials for the trail came from a single tree! A cedar tree had been dropping large limbs for a number of years; after most of the branches had fallen, a decision was made to fell the remaining.

Trees naturally are a fantastic environment for play—whilst walking around the estate, visitors might find a fallen tree to climb on or even a hollowed tree to hide in. The most important fact about this is that no tree really dies, even after

Osterley Park House Opening Hours 2013

| House & Garden 2013 | | | | | | | | |
|--|-----------|---|---|---|---|---|---|---|
| 29 Mar - 30 Sep | 11 - 5 | M | T | W | T | F | S | S |
| 1 Oct - 1 Nov | 12 - 4 | M | T | W | T | F | S | S |
| 2 Nov - 15 Dec | 12 - 4 | | | | | | S | S |
| Tearoom, Shop & 2nd Handbook Shop 2013 | | | | | | | | |
| 29 Mar - 30 Sep | 11 - 5.30 | M | T | W | T | F | S | S |
| 1 Oct - 31 Oct | 12 - 4.30 | M | T | W | T | F | S | S |
| 1 Nov - 15 Dec | 12 - 4.30 | | | W | T | F | S | S |
| Park & Car Park 2013 | | | | | | | | |
| 29 Mar - 30 Sep | 8 - 7.30 | M | T | W | T | F | S | S |
| 1 Oct - 31 Dec | 8 - 6 | M | T | W | T | F | S | S |
| House: Only Basement floor open every Monday & Tuesday 16 Feb to 31 Oct: Last Entry 1 hour before stated closing time The Park will be open on Christmas Day, Boxing Day & New Years Day 11am - 4pm. | | | | | | | | |

Cedar play trail

(Continued from page 6)

falling, it becomes an amazing host for wildlife. There is lots of dead wood habitat at Osterley so it was felt that this Cedar could be the perfect material for a play trail in the Long Walk. One of the best things about the trail is that it has been, and is being, made at Osterley by the property's own team. The play trail is being added to, week by week, and visitors will be able to see what a little bit of imagination can build (see below).

And I wouldn't like to say that staff are competitive but times have been recorded for completing the trail from one end to the other without touching the ground. The current leader is Jeremy Dalton at 14.3 secs. 📷

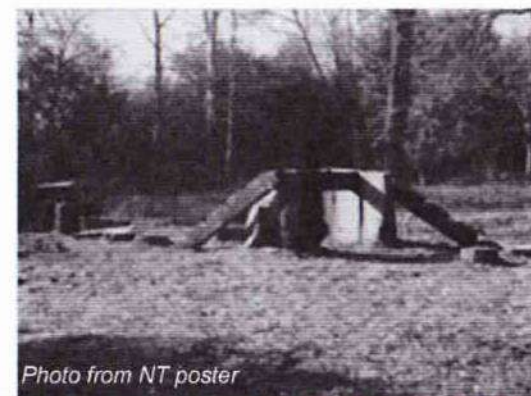
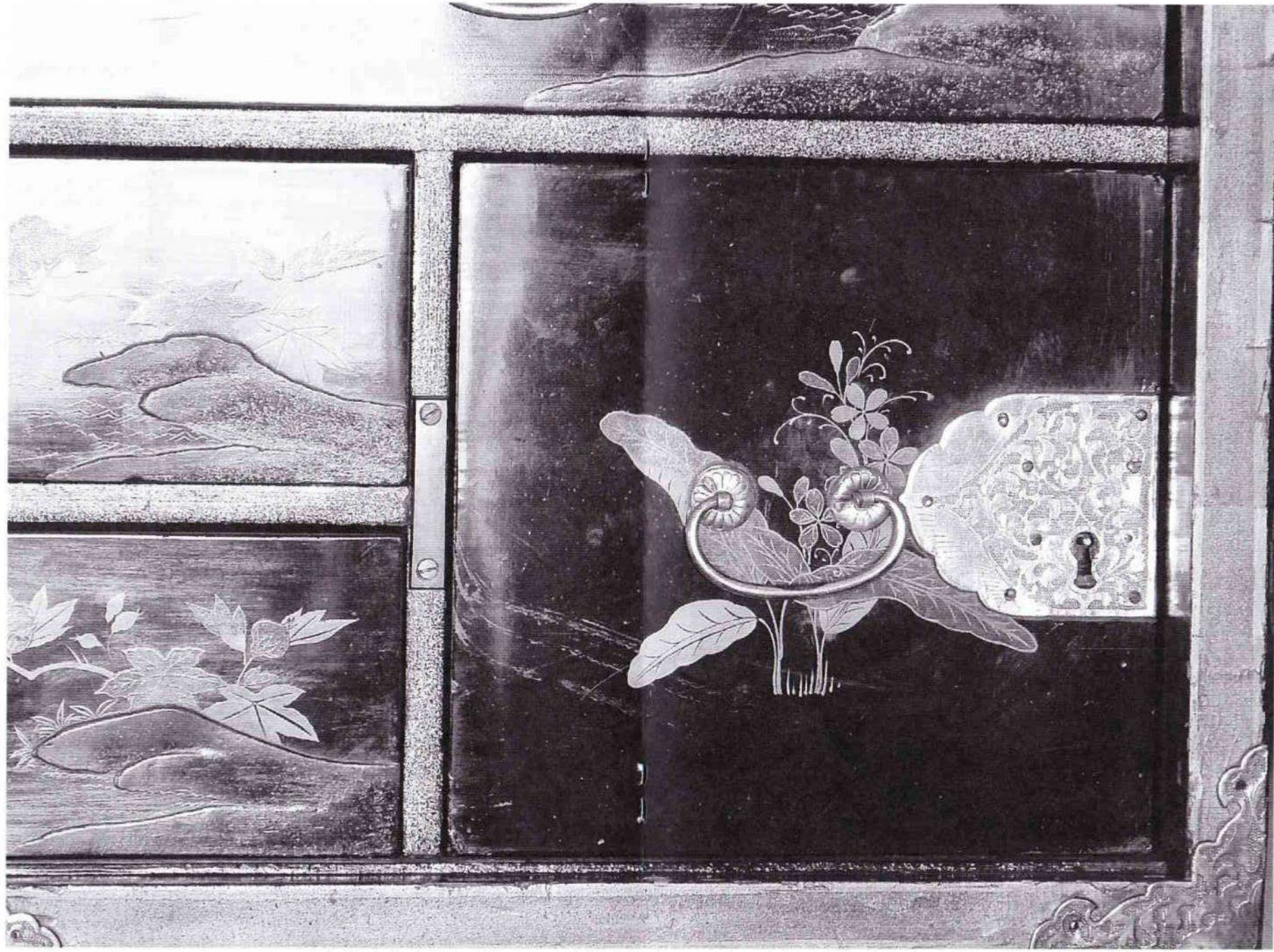


Photo from NT poster



Interior of Japanese Lacquer Cabinet, Mrs Child's Dressing Room, Osterley Park, London Photo: John Stacey See article on page 14

Japanese Lacquer Cabinet

(see photos on cover and centre spread)

Margaret Friday

The exquisite pictures taken by John Stacey for this newsletter are of the exceptionally fine Japanese lacquer cabinet in Mrs Child's dressing room. It is the only item of furniture listed in the 1782 inventory for this room which is still in the room. Although it is barely mentioned in the most recent guide book (and the only photo-



tograph included illustrates one corner showing hinges, see above), the cabinet (see below, cabinet to left) is definitely worth a much closer look (see John's photos on cover and centre spread).



Photo: Wei Hei Kipling



Our elegant case was made during the Edo period of Japanese history commemorated in the *Great Japan Exhibition, Art of the Edo Period 1600-1868* at The Royal Academy in 1981-2. Some may have been fortunate, as I was, to visit that exhibition.

During much of the Edo period, the Tokugawa shoguns (see above, *Tokugawa Iemitsu, 1632-51, who issued a series of edicts restricting Japan's interactions with the outside world*) ruled Japan and, to quote William Watson in the introduction to the exhibition, "Japan was virtually sealed off from any contact with foreigners, and the complex culture which developed was quintessentially Japanese". Major French collector Louis Goussier described Japanese lacquers as "the most perfect and finest objects ever issued from the hand of man".

(Continued on page 16)

Japanese lacquer was the finest. Like many Japanese crafts it originated in China but was refined to display the most beautiful and delicate floral decorations. Chinese lacquer was considered less fine but was widely available in Europe. European "japanning" was of inferior quality as the essential ingredient sap from the lac tree was not available in Europe and substitutes were seldom successful.

The Japanese method of lacquer decoration began in the mid 8th century. Gold or silver powders were applied over a deep black ground. These sprinkled designs, called *maki-e*, were drawn in wet lacquer and held in the pattern as the lacquer dried. This was protected by a layer of clear lacquer which was polished with charcoal sticks. Designs in high relief with many colours were called *takamaki-e*.



Photo: ©National Trust Images/
Matthew Hollow

The first European visitors to Japan arrived unexpectedly in 1542 when a Portuguese ship was blown ashore during a storm. Dr. Oliver Impey in "*Japan and the West, the first one hundred and fifty years*" tells us of the first visit by an Englishman. Captain Saris sailed in on *The Clove*, an East India Company ship during 1613. He spoke of various wares from Japan but did not mention lacquer.

We do know that King James I (see above) along with other European monarchs purchased fine goods from Japan at a sale held in Middleburg by Dutch merchants. These goods came from Portuguese ships captured by the Dutch as the ships returned from Japan in 1602 and 1604.

Until 1639, when they were expelled, many Jesuits settled in Japan to convert the Japanese to Catholicism. At the time, many lacquer items were made for the Jesuits including Bible stands, prayer stools and writing slopes. Some of these were shown in the *Great Japan* exhibition. As well as being exceedingly beautiful, Japanese lacquer was known to be durable because it was waterproof and insect-proof.

Early Japanese cabinets were in the form of coffers which were opened from the top (see below).

Cabinets opening from the side were first introduced in Japan in the 1630s. Mrs Child's cabinet is a fine example with metalwork and handles over a special black lacquer combining colours with gold and silver in the floral decorations. In Europe



Photo: ©National Trust Images/
Mark Fiennes

the black and gold theme became the favourite but our chest also displays colours so is *takamaki-e*.

In Japan, the father of the bride often commissioned fine lacquer items as gifts for his daughter on her marriage. Complete tea services in beautiful lacquer cabinets bearing flowers and plants would symbolise the virtues of the bridal couple and the

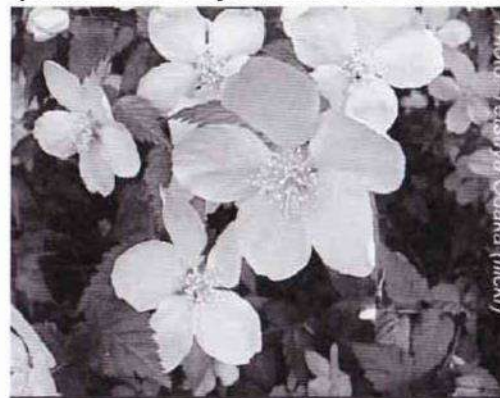


Photo: Tetsuya Ojaka (flickr)

felicity of their union. The peony represented wealth. As the rose bloomed in all seasons, it stood for unending youthfulness. The Japanese *yamabuki* flower (see left) was feminine charm.

(Continued on page 18)

Japanese Lacquer Cabinet

Could this exquisite lacquer cabinet have been a present from Sarah's father Gilbert Jodrell on her wedding day 6 October 1763? She kept this precious piece in her dressing room along with the portrait of her daughter Sarah Anne (see right): the two items were here in 1782, perhaps representing her special treasures.

Impey says that, from the 17th century, "the Japanese cabinet on a European stand was an almost obligatory feature of any great house until well into the Eighteenth century." Go and enjoy Osterley's example of the finest lacquer work ever made.

John's pictures offer the "Friends" a special look at this cabinet opened that others do not get to see but no description can do this magnificent piece justice – you must really go and view the fine interior when there is an open cabinet day. You will be surprised by the beautiful work of art before you. 🏡



(Continued from page 17)

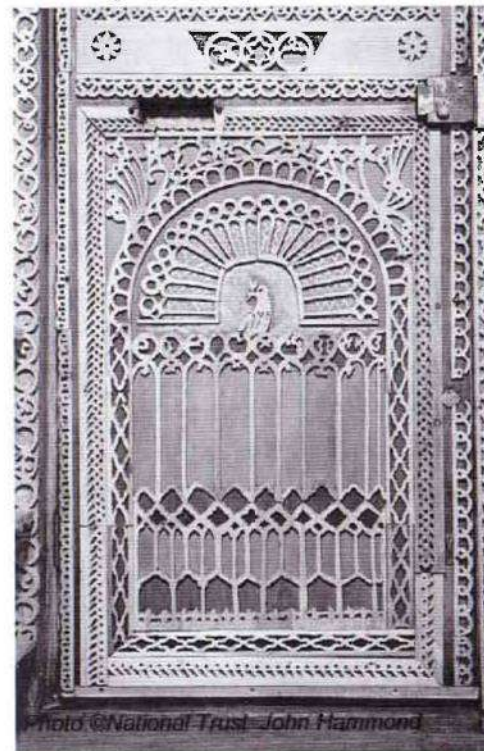


London Visits 2013

Wei Hei Kipling

I have been pleasantly surprised at the interest shown in the London Visits advertised in the last newsletter—though I am, of course, not attempting to fill a 40 seater coach. Indeed, some places of interest in London, by their very nature, are suitable only for relatively small groups. The visit to the Thames Police Museum in Wapping for May has only fifteen places and there are already six on the waiting list!

As this newsletter goes to print, there are still places for the Bank of England Museum visit in April and a couple of places for the visit to the Geffrye Museum in June so please phone me (020 8840 5939) if you are interested. In view of the number of visits already offered this spring, I will take a view on whether or not to attempt a visit in July but will certainly be thinking about options for the autumn for the next newsletter.



The visit to 575 Wandsworth Road in April was fascinating. From the moment, we walked through the door, there was so much beautiful fretwork to admire—such as the peacock (see left) on the inside of the front door.

As volunteers at Osterley, it was also interesting to hear the very different approach to footfall at 575WR—there is a limit on annual visitor numbers of 2,000 because of the fragility of the site.

(Continued on page 22)

Coach Trips 2013

Many friends have enjoyed the Coach Tours and summer holiday tours organised by our late friend Jim Tickle over more than the last decade.

Late last year, a group was set up to organise six tours over 2013. So far four volunteers have arranged trips up to July (see the booking form in this newsletter) and we

would like to recruit at least two more volunteers so we can organise a tour each month from April to October (excluding August).

The role of each volunteer is to contact (and if possible visit) a destination chosen from a list created by the group; establish access, house tour guide arrangements, costs for non-members and any meal arrangements; and if possible act as the tour leader for one tour. I then undertake booking the coach, handling the money and issuing tickets.

We are also looking at reviving the 5 day tour in September. So if you feel you could take on the role of setting up one day tour a year please let John James know—if we get too many volunteers we could always look at more tours!

Also, please could everyone consider going on as many tours as you can so we can keep this going.

As this newsletter goes to print, the first trip to Ightham Mote is making a small loss (the learning point for us is to check that no other local National Trust events are on the day we choose), the trip to Anglesey Abbey is fully booked, Claydon has over a dozen spaces (but is nearly 2 months away) and booking for Lacock (details on page 21) and Uppark (Mon 16 September—details to follow) opens in this newsletter. 🏠

Douglas Craik



Lacock Abbey

Pat Herod

Photo: ©National Trust Images/
Andrew Butler



Our July coach trip will be to Lacock Abbey, Fox Talbot Museum of Photographs and Village, near Chippenham, Wiltshire on Thursday 11 July.

Lacock Village, by the banks of the River Avon, is famous for its

picturesque streets and more recently as a TV and film location. The Abbey (*see cloisters above*), located within its own woodland grounds, is a quirky country house of various architectural styles, built upon the foundations of a former nunnery. It has 800 years of history. The Museum celebrates the achievements of former resident William Henry Fox Talbot, famous for his contributions to the invention of photography. As regards eating and shopping, there are the National Trust Stables Tea Rooms and gift shop. However, NT Volunteer cards cannot be used in other village shops, tea rooms, pubs and restaurant as these are not National Trust businesses but are leased and managed by tenants. 🏠

Excursions leave from the lakeside car park at 09:30 and aim to return about 18:30

For more information, please contact:

Ticket availability: Douglas Craik 020 8977 6449

Thu 9 May Anglesey Abbey—Patricia Barrett 020 8568 9050

Tue 4 June Claydon—Margaret Friday 020 8991 0593

or Douglas Craik 020 8977 6449

Thu 11 July Lacock Abbey—Pat Herod 020 8994 3219 🏠

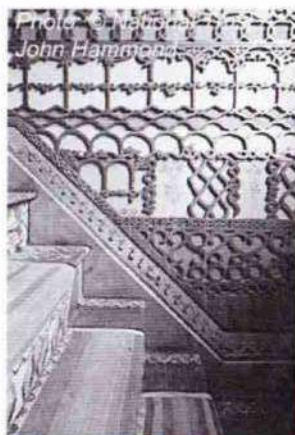


from the Editor

Oh dear—it's my fault with the costs of the newsletter that there is a proposal to increase the membership subscription for 2014. There has also been a request for the size of the text to be increased and I am using larger illustrations so the newsletter may have more pages in the future. It is, however, not a solution to email the newsletter. Anyone receiving a newsletter by email would either have to read the newsletter on screen or print it out themselves and so could validly ask for a reduced subscription. 📧

London Visits

(Continued from page 19)



With fretwork almost everywhere —on shelves and walls—visitors were asked not to carry bags (even handbags) into the house but to store them in lockers. We were also asked to take off our shoes and to wear thick socks supplied by the property to reduce possible damage to paintings on the floors and steps (see left) by shoes and also to alleviate the effects of vibration caused by our walking around in the property.

Almost as amazing as the beauty and detail of the carving and associated decoration was the simple tool (see right) which Khadambi Asalache used to create the intricate fretwork. In the end, there was decorative carving throughout the terrace house (a simple two up, two down with a basement) and the project took about twenty years off and on. A lovely place to revisit. 📧



*Photo ©National Trust Images/
Cristian Barnett*

from the Diary

“Friends” Events and Excursions

- Wed 24 Apr London Visit: Bank of England Museum
- Thu 9 May Coach trip: Anglesey Abbey
- Wed 15 May Friends AGM and Social (inside front cover)
- Wed 15 May Booking deadline for Geffrye Almshouses
- Wed 22 May London Visit: Thames Police Museum
- Tue 4 Jun Coach trip: Claydon
- Tue 11 Jun Coffee morning—John Stacey (page 5)
- Sun 16 Jun Friends' Visit Osterley Old Farmhouse (page 9)
- Wed 19 Jun London Visit: Geffrye Almshouses
- Thu 11 Jul Coach trip: Lacock Abbey and Village
- Tue 30 Jul Coffee morning—John James (page 5)
- Mon 16 Sep Coach trip: Uppark

For more information:

London Visits—see page 19 and Winter 2012/13 newsletter

Coach trips—see pages 20 and 21 and booking form

Advance Warning

- Sat 13 / Sun 14 Jul Friends presence at Osterley weekend
- Sun 4 Aug Teddy Paratroopers to Osterley (page 8)
- Tue 10 Sep Coffee morning—speaker tba
- Mid Oct Coach trip: Basildon Park



Next newsletter due to be published in June 2013.

Any contributions to the Editor by **1 June 2013**.

The Editor may change or reduce contributions if necessary.