

The Friends of Osterley Park


In support of **National
Trust**

NEWSLETTER

Issue 85 SUMMER 2012 £1 (free to members)

Useful contacts

**Chairman /
Membership
Secretary**

John James
020 8232 8683

Newsletter Editor

(Mrs) Wei Hei Kipling
020 8840 5939
28 Airedale Road
London W5 4SD
kiplings@tiscali.co.uk

Single Lamp on the Great Stair
Osterley Park
see article on page 14
Photo: John Stacey

Printed by:
Colormax (West Ealing)
020 8566 1155



Friends / Volunteers

Celebrate



21 yrs



in support of **National Trust**

at Osterley

WITH **HILARY MCGRADY**

REGIONAL DIRECTOR LONDON AND SOUTH EAST

DRINKS AND LIGHT BUFFET

**Old Brewhouse,
Osterley Park
Jersey Road,
Isleworth TW7 4RB
Wednesday
18 July 2012
6.30pm to 8.30pm**

Tickets
£5 (Friends / Volunteers)
£7 one guest
RSVP by 11 July
using reply form from invitation
to Douglas Craik with SAE



from the Chairman John James

Our Annual General Meeting was held on Wednesday, 16th May in the Old Brewhouse at Osterley Park. 38 members were present.

This was a very special meeting as Ian Conacher was retiring as Chairman after a long period of service. Ian in opening the meeting acknowledged the support he had had from committee members over the years. The proposal to amend the Constitution to introduce a new office of President was unanimously agreed. It gave me great pleasure to nominate Ian Conacher as our first President, as an acknowledgement of his outstanding service to The Friends of Osterley Park since its inauguration.



Photo: John Steacy

Joan Mound, a long serving member of the committee, paid the following tribute to Ian.

"I would like to thank you all for being "Friends of Osterley" and to add a few special words of appreciation to Ian who has been a steadfast rock to the Friends for all these years. Being on a committee takes time, enterprise and occasionally a "bit of luck" to keep everything running smoothly. The diversity of our programmes has been appreciated by all of us who have taken part. With the help of all the past and present committee members, Ian's leadership has maintained a steady fund-raising asset to the Osterley House and Park activities. I notice from an old spreadsheet of our membership that Ian and Audrey have membership numbers 1 and 2 and I hope

The Friends of Osterley Park 

Name *Mr I Conacher*

Membership *1*

The Friends of Osterley Park 

Name *Mrs A Conacher*

Membership *2*

they may keep their numbers for many years to come. As Ian becomes our new President of the Friends we will keep his talents and experience in full flow in the future.

Thank you Ian."

Audrey Conacher's support of Ian over many years was gratefully acknowledged.

(Continued on page 4)

Chairman

I was honoured to be elected as your new Chairman. Ian will be a hard act to follow! I am delighted that he will be our President and that we will retain his expertise and experience.

The election of officers at the A.G.M. was as follows:

President Ian Conacher, Chairman John James, Honorary Secretary Patricia James, Honorary Treasurer Douglas Craik, Committee Members Michael Doran, Margaret Friday, Wei Hei Kipling, Joan Mound, John Stacey and Jim Tickle.

(Vice-Chairman and Membership Secretary to be appointed by the new committee at their first meeting.)

Your new committee met on the 7th June and agreed the following appointments: Vice-Chairman Douglas Craik, Membership Secretary John James until the end of the year, Newsletter Editor and London Visits Wei Hei Kipling



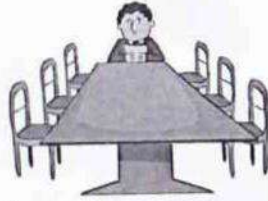
In this newsletter we are advertising for a new Membership Secretary to take over from me at the end of the year. I do hope that one of our members will volunteer to take on this post.

At the end of the A.G.M. Neil Cole, Property Manager, gave an excellent presentation on his plans to take Osterley forward.

On 25 April an enjoyable concert was held in the Old Brewhouse at Osterley Park, entitled "Light-hearted Moments from Opera and Musicals". It was given by Patrick and Christine Howard, supported by William Rae (baritone) and Anthony McCarthy (pianist). We are very grateful to the Howards for their continuing support.

You will be aware that we are going to celebrate the 21st anniversary of The Friends of Osterley Park. This celebration will take place on Wednesday, 18th July and further details are in this newsletter. Do come along for this very special occasion, when we will also make a presentation from the Friends to Ian Conacher. 📄

(Continued from page 3)



Old Farmhouse Visit

Joan Mound

At the invitation of Friends Patrick and Christine Howard, a few of the Friends of Osterley Park visited the Old Farmhouse on 27 May. The beautifully tailored Box edging and lawns surrounding the flower beds of iris, lavender, roses and lots of delphiniums were a delight to see. The Maze had grown considerably since our last visit last year and is, I understand, great fun for the grandchildren. Drinks and biscuits on the side lawn accompanied plenty of chat on various topics before we went into the house to admire the Adam features in the dining and drawing rooms.

An enjoyable couple of hours in pleasant sunny weather was greatly appreciated by us all. 📄

Betty Spikins

Wei Hei Kipling / Peter Bush

We are sorry to report the death of Betty Spikins who, with her husband Arthur, had been a member of the Friends for many years. Betty and Arthur used to recruit for the Trust at Osterley Park in the days when the property was managed by the V & A.



Peter Bush writes: "Throughout her life Betty was an enabler, her contribution to the Girl Guide movement demonstrates this. In her own words she said "I joined the Brownies at age 7 and forgot to leave the movement". As an adult Betty undertook a range of leadership roles both locally and in London & South East

Region. This would sometimes involve her in activities outside her comfort zone. I remember her coming back from one camp, to tell us she had been abseiling. Now we knew that Betty did not have a good head for heights and she was at the time not in the first flush of youth but typically she felt this would be encouraging, so down she went!"


Our sincere condolences go to Arthur, their two daughters Gillian & Alison, their two sons in law Steve & David and their grand children Katy, Rebecca & Andrew. 📄


Donations to Osterley

In the current financial year (2012), the Friends have given £537.95 for materials for the flower growers and £345.00 for repairs to the battery cars.

In addition, the Friends agreed at the last committee meeting on 7 June to fund maintenance of the buggy for one year to cover four visits (service intervals every 3 months, or 300 worked hours if sooner) at a cost of £620 including VAT.




The availability of the buggy is greatly appreciated by many of our less mobile visitors (and also by those mobile visitors in a rush). If you are interested in volunteering to chauffeur our visitors to and from the house, please contact the House on 020 8232 5050. 

 **The Friends of Osterley Park**
in support of **National Trust**
Situation Vacant
Membership Secretary

As Osterley Park enters a new era with a new property manager, would you like to be more actively involved in supporting the Property through Friends of Osterley Park? The Friends are looking for a membership secretary (committee post) with the following tasks:

- To handle membership enquiries, applications and renewals;
- To maintain a membership list on a computer database;
- To liaise with the newsletter editor about generation of address labels and other membership-related papers for mailings.

The role may, at the discretion of the committee, also relate to activities to encourage recruitment of new members.

For more information, please contact chairman John James (020 8232 8683 john.james15@blueyonder.co.uk). 

from the Property


Staff Changes

Quite a few changes to report this time.


We say goodbye to: **Kate Churchill**, assistant house steward, who has joined Knightshayes Court, a National Trust Property in Devon; **Fenella Goodhart nee Hunt** (whose marriage was reported in the last newsletter) who has joined Hampton Court; and also **Dawn Watkins**, Commercial Manager, who leaves on 24 June to join the Royal Air Force Museum in Hendon as Head of Commercial Department.

Kelly Wood joins as Visitor Experience & Marketing Manager, maternity cover (for Karina Swann). Kelly is joining from English Heritage and has over 10 years experience of event management, hospitality and visitor experience.

Megan Tanner joins Osterley from Penrhyn Castle in Wales, and officially starts on 2 July as Commercial Manager to replace Dawn.

Becky Leach and **Nicola Reed** have both joined the team at Osterley over the last few months. Becky will be taking the lead on hospitality and functions whilst Nicola will be working on the Front of House entrance, taking the lead on raffle sales and overseeing the co-ordination of the VE surveys. 


Filming Exhibition

A reminder of the exhibition on filming at Osterley taking place 21 July to 4 November 2012 based in the Jersey Galleries with relevant exhibits to be found elsewhere in the House. 



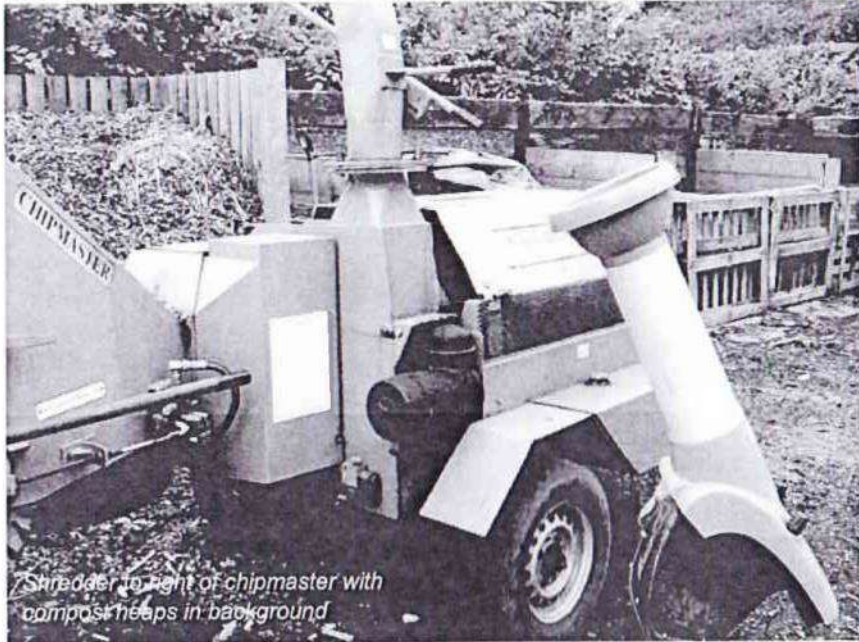
Food, glorious food



The kitchen range has now been used in earnest with reports of welsh cakes and pancakes being consumed (even or especially by the property manager). 

Heaps of Thanks

Wei Hei Kipling
photos John Stacey



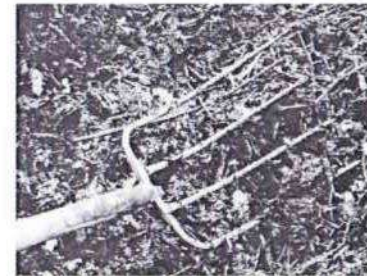
Shredder to right of chipmaster with compost heaps in background

The Osterley gardeners are grateful to the Friends for paying for a domestic shredder (see above, machine in front). "Why?" you may ask so Ed Turnbull, one of the gardeners, explained this to me.



Waste vegetation at Osterley comes in a wide range of sizes and types—from the carbon-rich logs and large branches from trees to the more nitrogen-rich grass cuttings. The waste vegetation is used to make compost to improve the quality of the soil with the grass cuttings being

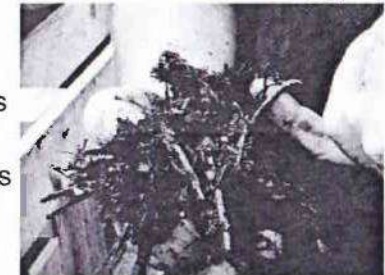
mixed with the carbon-rich branches and the like. The grass cuttings of course start small but the larger items should ideally be cut into smaller pieces so that the different types of material can be more evenly mixed and to increase the surface area on which the microbes can work. The logs and large branches can be cut into little chips by the chipmaster (see above, large machine) but



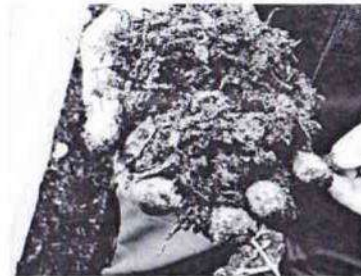
smaller branches, hedge and rose clippings and the like (see pile page 8 below) are too small and flexible to be chipped (and tend to clog up the chipmaster). The Friends' shredder is able to cut up this more flexible vegetation and so fulfils a task which the chipmaster cannot cope with while avoiding the need for the gardeners to cut up everything by hand (hence the gratitude).

The grass cuttings (which alone would rot to form a black sludge),

chips and shredded vegetation are mixed together in the first compost heap and left for perhaps three weeks for the microbes and fungi (visible in white, see top) to do their work. At this stage the mixture is hot—we could see steam rising when the cover was

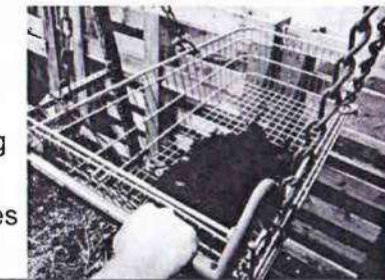


taken off the heap. (All the heaps are normally covered to keep in the moisture.) After a few weeks, the heap is moved to the next compartment (see compartments in background, page 8 above).



The worms (see above right) and other invertebrae eat the material processed by the microbes and fungi and produce wormcasts. The longer the mixture can be left at this stage, the better the quality of the compost (see left). The mixture is moved along

the compartments every three weeks so that a new heap can be started in the first compartment. Finally, before the compost is used, it is sieved using a contraption (see right) devised by Mark Rudd to remove any large pieces which have not broken down. 🐛



from the 100 Club



The first draw of this new competition was held at the AGM on Wednesday 16 May.

Congratulations to the winners who were:

£100	L Leman
£40	P Daniel
£20	H Collison

As you know, half of the money from the 100 club is used for prizes whilst the other half is used to fund projects at Osterley.

There are still three draws to come and membership is available for £9 per share for the rest of this competition. If anyone wishes to join, rejoin or increase their holding in the 100 Club, please send your cheque made payable to "Friends of Osterley" to:

John James (Membership Secretary),
Parkfield Cottage,
Osterley Road,
Isleworth, TW7 4PF

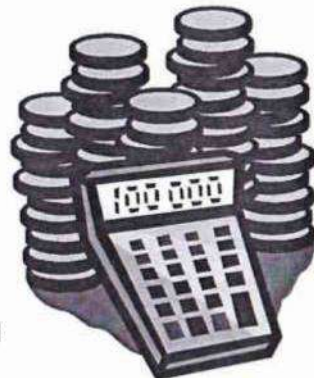
with your name, address and telephone number and an SAE for your membership card and the rules of the competition.

Those Friends who have not yet paid their subscription to the "Friends" for the current year will receive with this newsletter a reminder and can send just one cheque to cover both their annual subscription and their 100 Club share(s). You may wish to consider a standing order for future years.

It is expected that the other draws in this competition will be held as follows:

- No. 2 Autumn Reception
on Wednesday 3 October;
- No. 3 just before Christmas;
- No. 4 in early 2012
(probably February or March).

Please note that the 100 Club is a private lottery and so shares can only be allocated to paid up members of the "Friends".



in support of National Trust



Wine
will be
served

The Friends of Osterley Park

Old Brewhouse,
Osterley Park
Jersey Road, Isleworth TW7 4RB

Wednesday
3 October 2012
Doors open 7pm
Meeting starts 7.45pm



2nd draw
"100 club"

AUTUMN SOCIAL



SPEAKER: CLAIRE REED

COLLECTIONS AND PREMISES MANAGER

Car Parking in the Stable-Yard

Please come early

Park Gates closed from 7.30pm until after the Meeting



Leopolds on the Great Stair
Photo: John Stacey

Osterley Park, London
See article on page 14

Lamps on the Great Stair at Osterley

(see photos on cover and centre spread)

Margaret Friday

In this newsletter, John Stacey shows us the refined elegance of the oil lamps designed by Robert Adam and made by the gifted engineer and businessman Matthew Boulton for Osterley Park House. The oil lamps are shown in *The Works in Architecture of Robert and James Adam*. The three lamps inspired by the antique style hang between the Corinthian columns on the principal floor at Osterley. The lamps use oil and are constructed so they can be lowered to be filled with oil and lit and then drawn up to their hanging locations again to light perfectly the stairs.



Detail ©National Trust Images/ Bill Batten

Two other Boulton lamps are on display – one on the landing above the hanging lamps and one in the north corridor. Although these are displayed on green and white stands, they were described as hanging lamps so perhaps one of them could be hung on the large hook

which hangs over the staircase leading up from the family entrance. If you stand on the staircase going up to the bedrooms and look towards the hanging lamps with the windows to the courtyard in the background, you can work out where John was positioned to take the picture (on the cover) of the single lamp.

Boulton held an exhibition of his works in London in 1772. The winged blue-john vases (see above) seen on the mantelpiece in the Drawing Room along with the spar vases with double branches were purchased for £29/8/- by Robert Child when he visited the ex-



Detail ©National Trust Images / Bill Batten

hibition in April. The tall tripod candle stands (see page 14 below) which grace the Gobelin Tapestry Room and the Drawing Room are also linked to payments made to Matthew Boulton in 1772.



Wikimedia
Artist: Carl Frederik von Breda

Matthew Boulton (see portrait left) joined his father as a partner in a successful business making toys, buckles and buttons, stainless steel jewellery and stamping silver. In 1749, when he was 21 years old, Matthew decided to build up the whole of the business rather than specialising in any single part such as management or manufacturing of specific types. He purchased land at Soho outside Birmingham to build a factory. He said

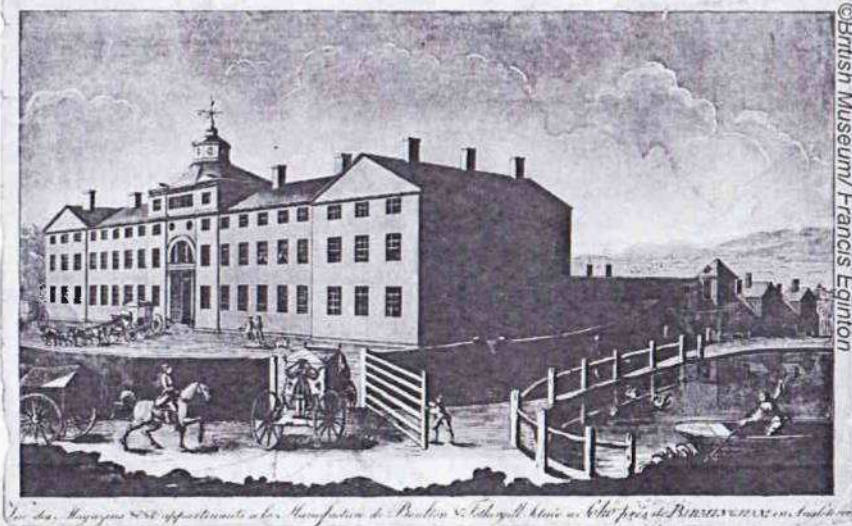
“Birmingham is my native town. I am interested in its manufactures both as a merchant and manufacturer. Few men have endeavoured more than I to improve those arts upon which it depends”. This may sound like boasting but Boulton built the most famous manufacturing business in the world in the eighteenth century.



Wikimedia
Attributed: George Willison

Many of Boulton's personal qualities were probably shared with Robert Child and Robert Adam (left). Boulton is described as ambitious, ingenious, shrewd and intelligent as well as being an entrepreneur, innovator, problem solver and perfectionist. These attributes could all be used to describe both Robert Adam and Robert Child. Jenny Uglow in her book *The Lunar Men* describes Boulton as “frank and humorous, always with an

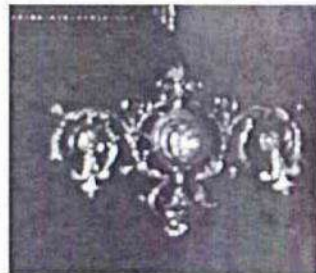
(Continued on page 16)



©British Museum/ Francis Eginton

eye to the main chance, he was a man on the make.” The same could be said of Robert Child and Robert Adam as they were all newly wealthy gentlemen occupied in trade and only interested in creating the best for their customers!

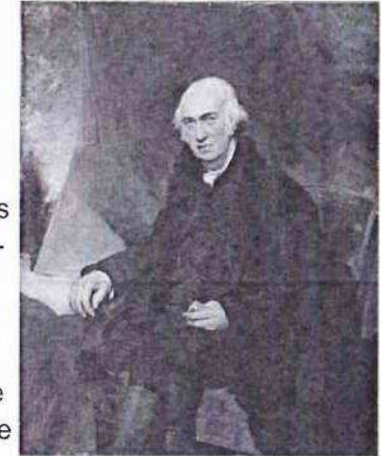
Matthew Boulton’s Soho manufactory (see above) employed, at its height, a thousand craftsmen who lived on site. He did not use children in his factory. He set up the first scheme to help craftsmen if they became ill and could not work: one percent of their earnings each month were used for a fund to pay the men when they could not work. Boulton set up his factory so that skilled craftsmen could work together producing the most perfect of items – whether polished steel jewellery, vases made with bluejohn or candle stands using ormolu and ostrich eggs. It was Matthew Boulton who studied the making of ormolu in France and began to copy and enhance the technique so that many objects at Osterley bear Boulton’s trademark ormolu designs. Robert Adam designed the grates and fenders at Osterley using pol-



Detail ©National Trust Images / Bill Batten

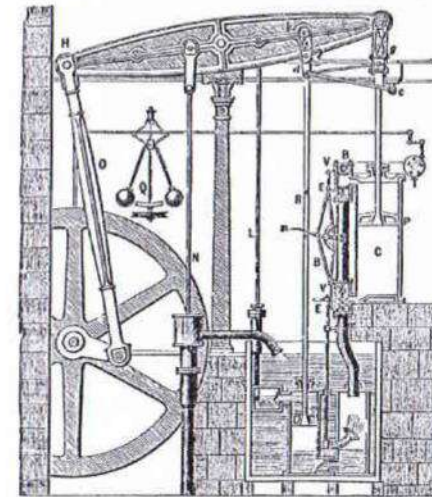
ished steel. It has been suggested that Matthew Boulton also made the exquisite door furniture (see page 16 below) designed by Robert Adam for Robert Child. Boulton’s secret was to use labour saving devices to produce goods using only the best materials which could be easily assembled. His workers were well paid and their products were sold across Europe.

In 1769, Matthew Boulton met James Watt (see right) and they began to work on improving the steam engine. To that time, Watt’s invention had not worked successfully. Boulton had the talent and the money to support Watt’s scheme. The first finely made and efficient steam engine was produced in 1774. By 1800, five hundred engines were in use. By 1824, 10,000 steam engines had been sold in Britain alone with thousands more in use around the world according to the *Mind Alive Encyclopedia of Technology* (1977).



Wikimedia

Artist: Thomas Lawrence



Wikimedia: Sketch by Thurston showing steam engine by Boulton & Watt 1784

Boulton was further linked to the Child family by his success in getting George III to re-establish the Royal Mint which had been closed since 1760 leaving the making of coins open to fraud. As mentioned in *Matthew Boulton a revolutionary player* edited by Malcolm Dick (Brewin Books 2009), Boulton had been particularly distressed that Birmingham had become synonymous with coin and metal forgery: this was not

(Continued on page 18)

Lamps

good for Boulton or for the business of the city. Boulton developed a design style (see right) – termed “cartwheel coins” – for coins and medals which could not be easily copied

and which showed when the coins were clipped. The coins were initially produced in London on East India Company premises using a steam powered

press but manufacture was later transferred to the Birmingham Soho manufactory (see *mint mark below Britannia's shield in detail above*). The coins contained their face value in copper and Boulton was able to produce coins to a standard that ensured their weight, size and colour were identical. Boulton himself actually prosecuted some counterfeiters. The rigorous pattern set out by Boulton continues to be used to this day. The Child family of bankers and goldsmiths must have been delighted.

In 2009, the city of Birmingham honoured their famous son by publishing a book *Matthew Boulton: Selling what all the world desires* and much of the information in this essay comes from that beautifully illustrated book. The title of the book comes from a remark that Matthew Boulton made to James Boswell when Boswell came to visit the Soho Foundry “I sell here, sir, what all the world desires to have – power!”

I believe that this sentiment would have been shared with his contemporaries Robert Adam and Robert Child.

On your next visit to Osterley Park House take a closer look at the splendid lamps designed by Adam and made by Boulton for Robert Child. I am sure you will be delighted. 🏠

(Continued from page 17)



Photo and detail: detecting (wikimedia) under Creative Commons Attribution-Share Alike 3.0 Unported license



Excursion Autumn 2012

James Law

We are pleased to let you know that a further coach outing has been arranged with GMK Travel, our coach driver, Graham's company, for Thursday 20th September, going to Waddesdon Manor, Buckinghamshire. We may possibly also visit either Hartwell House, Stone, or Old Amersham in Bucks., en route, depending on our timing on the morning,

The cost per person, assuming NT membership is held, will be £15.00 payable directly by cheque to GMK Travel. To book seats on the coach, please use the booking form enclosed with this newsletter and post your form directly to GMK Travel at 2 Binhamy Crest, Cleavelands, BUDE, Cornwall EX23 8AB. Your tickets will be sent to you as soon as possible. For late applications, please check ticket availability by phoning Graeme on 07711 635368.



Photo: foshtie (flickr)

Waddesdon Manor is a magnificent house and grounds in the style of a 16th century French chateau, built between 1874 and 1889 for Baron Ferdinand de Rothschild, to entertain his guests and display his vast collection of art treasures. It houses an extraordinary assemblage of French 18th century decorative arts. The furniture, Savonnerie carpets and Sevres porcelain rank in importance with the Met in New York and the Louvre in Paris.

The gardens and parterres are always delightful and exceptionally well manicured.

There is a splendid restaurant and other refreshment facilities at Waddesdon, so you will not be disappointed! A great day out is assured!! 🏠

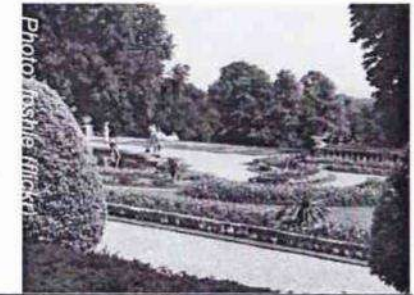


Photo: foshtie (flickr)

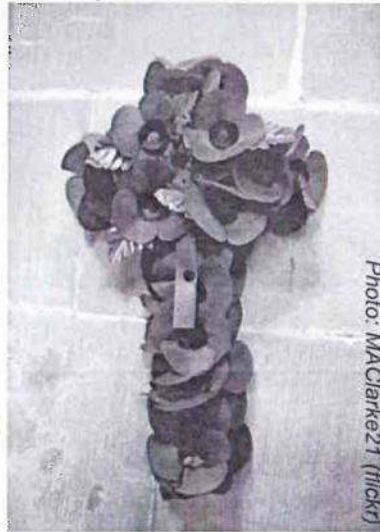
London Visits Autumn '12 Wei Hei Kipling

Two of our visits this autumn were prompted by suggestions from Friends so please do keep your ideas coming in.

The popularity of the London visit to the White Lodge in Richmond Park (all 30 places taken) made me wonder if visits more local to west London might be worth investigating.

Although a visit in November might be more topical, I felt that the **Poppy Factory in Richmond** would still be of interest in September. You will be able to enjoy a fascinating presentation and introductory film about the Factory and its history and then visit the 'shop floor', giving you the opportunity to meet some of the workers and see how poppies and wreaths are made. Cost: £5 (£2.50 to Poppy Factory, £2.50 to Friends) to include refreshments at start of tour. **Please book by 18 July 2012 with names and addresses of all visitors.** Meeting arrangements: Monday 3 September, 10.10am at Richmond station to catch 65 bus or 10.25am at The Poppy Factory, 20 Petersham Road, Richmond, Surrey TW10 6UR for 10.30am tour of 1 1/2 hours. (No car parking at The Poppy Factory.)

John Whitgift (*page 21, top*) was Archbishop of Canterbury from 1583 until his death in 1604. As Archbishop, he would have made use of the **Old Palace in Croydon**, an Archbishop's home for over five centuries and visited by, among others, Elizabeth I. The palace buildings are now used by a girls' school but tours can be taken on specific dates during the school holidays. Cost: £11 (£7 or £6 senior citizens to Old Palace and to cover booking deposit, remainder to Friends) to include refreshments in Great Hall. **Please book by 9 October 2012.** Meeting arrangements Tuesday 23 October, 12.30pm at the Wimbledon London Tramlink Stop (by Wimbledon



Underground station) to take Croydon Tramlink (can use freedom pass) to Old Palace of John Whitgift School, Old Palace Road, Croydon CR0 1AX to arrive by 1.30pm for 1.45pm tour of 2 hours.

Barts, founded in 1123, is the oldest hospital in Britain which still occupies the site it was originally built on, and has a long history as well as architecturally important buildings. The Henry VIII entrance to the hospital (*see below*) is still the main public entrance; the statue of Henry VIII above the gate is the only public statue of him in London. Our guided tour of about one hour will include the church of St Bartholomew the Less; the Hospital's Square, North Wing and Great Hall, all designed by James Gibbs; and Hogarth's famous biblical paintings followed by time to visit the Barts museum. The North Wing is a working building and access to some areas may occasionally be restricted. Cost: £8 (£5 to Barts, £3 to Friends). **Please book by 24 October 2012.** Meeting arrangements: Monday 12 November, 10.45am at St Paul's underground station (street level) to walk to Barts for 11am tour.

As last year, no London Visits will be arranged for December 2012 or January 2013. ☹





from the Editor

I hope you think that Friends' London Visits are good value for money. The price is normally calculated to cover the cost of the visit and then to generate some funds to donate to projects at Osterley. The minimum charge is £5 and this will be charged for visits incurring no costs to visits with a cost or donation of about £3. The other complication can be visits which require a deposit (such as the visit to the Old Palace, Croydon) or visits with a flat rate charge such as the cost of a guide for the Guildhall where (as for hire of a coach), I have to make sure that I will at least break even. One advantage of London Visits is that the charge does not need to cover the wages of paid support staff.

One question I have not been able to answer is how much Friends would be willing to pay for a London Visit if the basic cost charged by the building being visited is relatively high. The best example of this at the moment is Gilbert Scott's Midland Hotel, now restored



Photo: pandroulls (flickr)

and opened as the St Pancras Renaissance Hotel (see above).

According to their website, the cost of a one and a half hour tour is £20 and the maximum size of the group is ten people. This does not include refreshments. Would you be interested in going on a tour which cost, say, £23 in total? You may say that you have already been or that it is too expensive. I would be interested to hear—either on the booking form or via email. Obviously any interest indicated is not a commitment as that could depend on dates.

Many thanks. 

from the Diary

"Friends" Events and Excursions

Wed 11 July	Booking Deadline for 21 Years Celebration (18 July)
Wed 18 July	Celebration of 21 Years in support of National Trust at Osterley (see front cover and invitation)
Wed 18 July	Booking deadline for Poppy Factory (3 Sept)
Mon 3 Sept	London Visit: Poppy Factory in Richmond
Thu 20 Sept	Coach Excursion: Waddesdon Manor
Wed 3 Oct	Autumn Social (see page 11)
Tue 9 Oct	Booking deadline for Old Palace, Croydon (23 Oct)
Tue 23 Oct	London Visit: Old Palace, Croydon
Wed 24 Oct	Booking deadline for Barts (12 Nov)
Mon 12 Nov	London Visit: Barts

For details of coach excursion—see page 19

For details of London Visits—see pages 20 and 21

Osterley Park House—a selection (see page 5)

7 Mar to 29 Apr and 5 Sep to 5 Nov except Mon, Tue	House open 12 to 4.30 Garden open 11 to 5 Café open 11 to 5 Shop open 12 to 5
2 May to 2 Sep except Mon, Tue	House open 12 to 5 Garden open 11 to 6 Café open 11 to 6 Shop open 12 to 6 2nd Hand Bookshop 12 to 4
Open on Good Friday and Bank Holiday Mondays Last admission 30 mins before closing	

Next newsletter due to be published in Oct 2012.

Any contributions to the Editor by **3 Oct**.

The Editor may change or reduce contributions if necessary.