

# The Friends of Osterley Park

  
in support of **National  
Trust**

## *NEWSLETTER*

Issue 84 SPRING 2012 £1 (free to members)

### Useful contacts

#### Chairman

Ian Conacher  
020 8560 8523

#### Membership Secretary

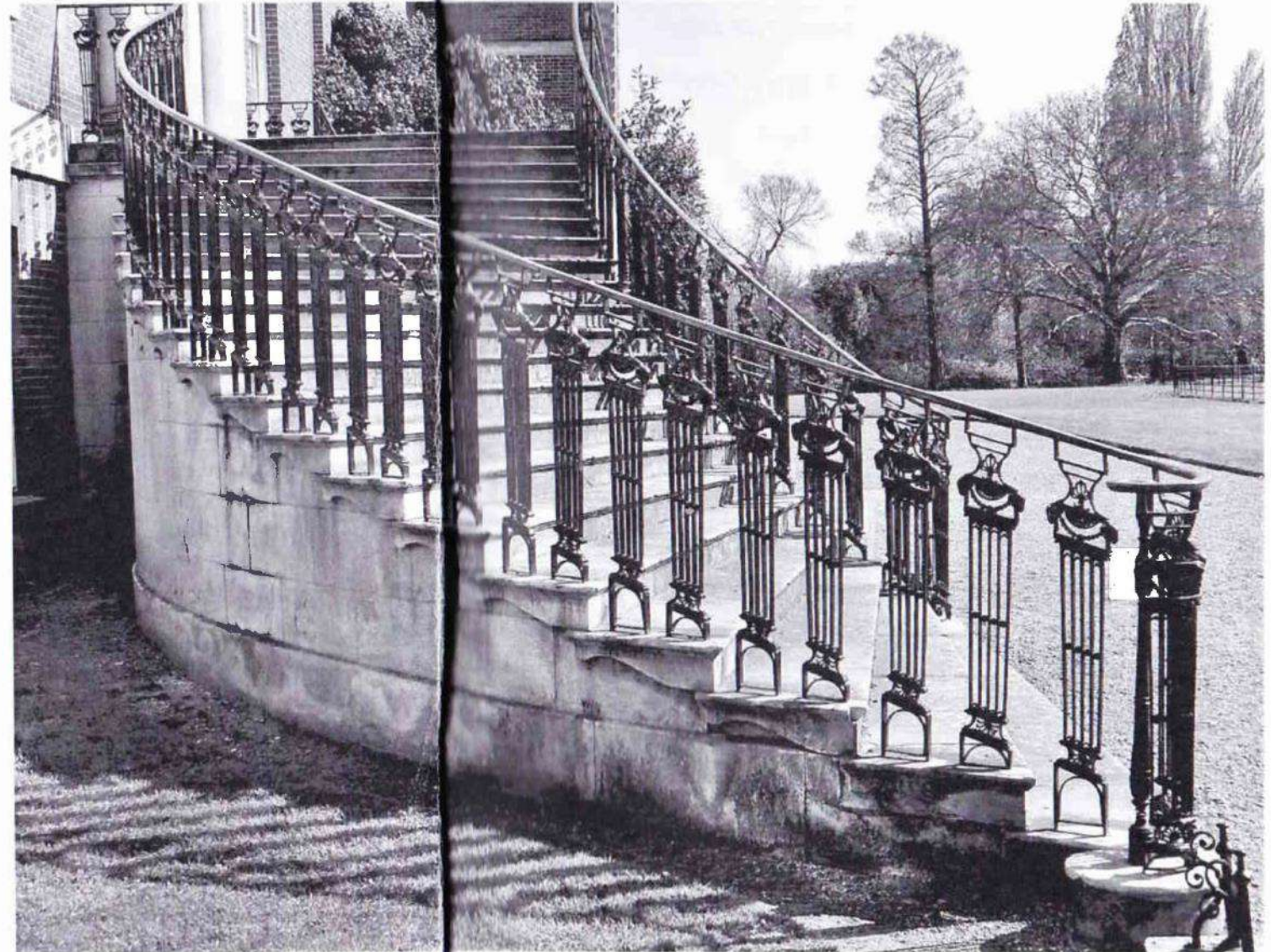
John James  
020 8232 8683

#### Newsletter Editor

(Mrs) Wei Hei Kipling  
020 8840 5939  
28 Airedale Road  
London W5 4SD  
kiplings@tiscali.co.uk

Staircase at the west front  
Osterley Park  
see article on page 14  
Photo: John Stacey

Printed by:  
Colormax (West Ealing)  
020 8566 1155







# The Friends of Osterley Park

in support of National Trust



Wine  
will be  
served

Old Brewhouse,  
Osterley Park

Jersey Road, Isleworth TW7 4RB

Wednesday 16 May 2012

Doors open 7pm  
Meeting starts 7.45pm



1st draw  
"100 club"

## ANNUAL GENERAL MEETING

**SPEAKER: NEIL COLE**  
**NEW PROPERTY MANAGER**



**Car Parking in the Stable-Yard**      **Please come early**  
**Park Gates closed from 7.30pm until after the Meeting**



from the Chairman      Ian Conacher

*Ed's note: The Chairman's Report for the year ending 31 December 2011 will be given orally at the Annual General Meeting on 16 May 2012.*

### from the 100 Club

The final draw for the current competition was held at the preseason training meeting on 6 February.

Congratulations to the winners who were:

- £ 40 Mrs B Gillespie-Gilbert
- £ 60 Mr J Robertson
- £100 Mr J James



Many thanks to all who took shares and congratulations to all the winners.

A new competition starts on 1 April 2012 with each share costing £12.00. We hope that existing shareholders will renew and that others will join. Remember that 50% of all income is given as prizes.

Some Friends have elected to pay both "Friends" annual subscriptions and 100 club membership by standing order and will receive a letter. Those paying by standing order may buy more 100 club shares by sending a cheque payable to "Friends of Osterley" to:

John James (Membership Secretary, Parkfield Cottage,  
Osterley Road, Isleworth, TW7 4PF)

with your name, address and telephone number and an SAE for your membership card and the rules of the competition.



Those paying by cheque can use one cheque for 100 club shares and "Friends" annual subscriptions and a form for both is enclosed. You may wish to consider a standing order in the future.

The first draw of the new competition is scheduled to be held at the "Friends" AGM in May. Please note that the 100 Club is a private lottery and so shares can only be allocated to paid up members of the "Friends".



## from the Property

### Staff Changes

Please welcome the new chef for the tea-room, **Kevin Avery**, who has been in the catering industry for over 17 years experience and joins Osterley from the Lensbury\*\*\*\* Hotel and Country club.

**Laura Whitehead** and **Chris Eden**, previously volunteers here, have joined the staff as Visitor Reception Assistants for the new till point in the Entrance Hall.




**Karina Swann** has gone on maternity leave earlier than expected and Evienne Margaret Swann (due to arrive in June) was born on 18 March – Mother's Day! Both are well.

**Fenella Hunt** is NOT leaving but will be off on honeymoon.

**Verity Postgate** has been appointed as the new Property Operations Manager for the National Trust at Nuffield Place, Oxfordshire, the home of William Morris, Lord Nuffield,

one of the world's greatest philanthropists and the man who made motoring affordable with the production of Morris cars.

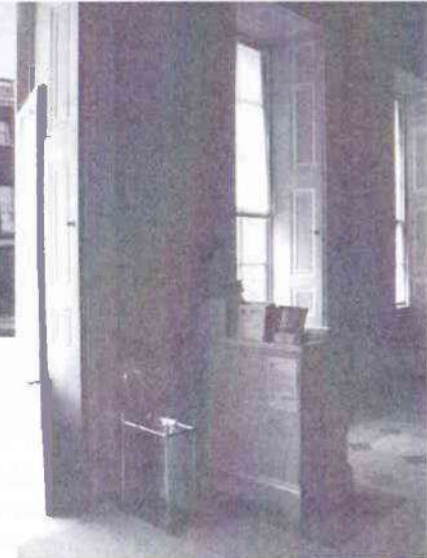
**Fiona Reynolds**, Director -General of the National Trust will be leaving to take up the post of Master of Emmanuel College, Cambridge in September 2013. 




Morris Oxford MO 1952

Photo: Charles01 [Creative Commons Attribution-Share Alike 3.0 Unported licence](#)


## Welcome to Osterley



When you go to Osterley, do you imagine yourself arriving for a grand party through the portico? Recently, visitors have used the Family Entrance (ie the entrance used by the Childs etc) because

of the lack of a handrail going up the grand outside steps. Also non-NT members might climb up the steps and then find that they had to go all the way down to the information point or garden kiosk to buy their tickets. The latter problem has been partly resolved by a till point in the Entrance Hall (of the same height and colour as the pedestals for the urns). NT members and cash payers are already able to enter via the Entrance Hall for the 2012 season and facilities to accept card payments should hopefully be available soon. Those who prefer to have the security of a handrail to go up to the Principal Floor will still be able to enter via the Family Entrance. 

### Filming Exhibition

An exhibition on filming at Osterley will take place 21 July to 4 November 2012 based in the Jersey Galleries with relevant exhibits to be found elsewhere in the House. The exhibition will span filming at Osterley through the ages from the films of the past to films of the present. 





## The Jubilee Wood?



About half way around the Long Walk, in the south west woods, a mass of laurel was cleared in 2008. New trees are now being introduced as saplings. Wood from the Estate has been seasoned and made into new benches (see left). The new wood may be named the Jubilee or Diamond Jubilee Wood. 🐝

## Bzzz—the bees have moved ...

The apiary has been moved from the walled garden to an area behind the overflow car park (see below). The reason for this move is that the estate yard and adjacent flower border are becoming busier every year. There were four occasions in 2011 when part of the long border had to be closed to the public because of swarming bees. Staff and volunteers were also getting stung more frequently. Jeremy Dalton, the head warden is a bee keeper himself and wanted to keep the apiary, so the hives were moved to a new area at the back of the garden lake. Most of this area has been designated as a bird sanctuary, but laurel encroachment is threatening the quality of the habitat there. All the laurel will be re-



Photo: Jeremy Dalton

moved and the area replanted with native trees and shrubs that are of use to a wide range of birds. There are now eight colonies of honey bees on the estate which are managed by three beekeepers including Jeremy. 🐝

## Going for Gold



Photo: Jon Candy (flickr)

Congratulations to **John James** who has been chosen to run with the Olympic 2012 torch (see left) on Tuesday 24 July. Watch out for him in the Hillingdon area as he runs 300m (about 300 feet to those of you who are more familiar with imperial units—three times the length of the 100m race) in the official tracksuit uniform. 🐝



## The Tax Man giveth...

Douglas Craik

Following recent changes we will now be able to claim Gift Aid for membership payments for The Friends of Osterley Park. We can also claim back for some previous years.

If you pay any income tax then we can claim 25% of your membership fee from HM Revenue & Customs - £2 for a single member in 2012.



We will be providing a claim form to everyone with the membership renewal forms in the spring, so please complete this if relevant. I appreciate not everyone pays tax, particularly as the tax free band is now rising but if you do it will be a significant help to us- if you are lucky(?) enough to pay high rate tax then you can also claim Gift Aid tax relief.

I will shortly be looking at other ways to claim Gift Aid on parts of other activities such as the coach tours and London Walks. . 🐝



## Excursions Summer 2012

James Law



©NTPL/Megan Taylor

We hope you will be pleased to see that the coach outings to National Trust properties are back of offer again, by popular demand. Thank you to everyone who

expressed an interest in continuing with the long established coach outings. We have arranged two trips for the early part of the 2012 season. We knew it would be a challenge, to say the least, to follow in Jim Tickle's footsteps, but we've made an attempt and we hope you will give us your support by booking seats. We also hope that Jim will be able to join us as a guest passenger on the coach.

Our friend, Graeme McCormack of GMK Travel, will be our coach driver once more. To book seats on the coach, please use the booking form enclosed with this newsletter and post your form directly to GMK Travel at 2 Binhamy Crest, Cleavelands, BUDE,

Cornwall EX23 8AB. Your tickets will be sent to you as soon as possible. For late applications, please check ticket availability by phoning Graeme on 07711 635368. Please invite friends too, as it would be helpful to fill the coach to capacity. We very much look forward to seeing both familiar and new coach guests on board!

### Wimpole Hall and Home Farm

Our first coach outing is arranged for Thursday 10 May to Wimpole Hall (see above) and Home Farm, near Royston in



©NTPL/Andreas von Einsiedel

Cambridgeshire. We leave Osterley House visitor car park on the coach at 9.30 am and aim to return to Osterley by 6.30 pm. The cost of the trip will be £14.00 per person, assuming that NT membership is held.

The Wimpole Estate is a unique working estate, guided by the seasons. There is an impressive mansion at its heart, on which some of England's finest architects have made their mark including Sir John Soane (see his book room, page 8 below) in the late eighteenth century. There are spectacular views of the estate, beautiful Georgian interiors and a family chapel. The basement corridors allow us to glimpse life below stairs in a previous era. You may stroll through the pleasure grounds to the walled garden, and around the



©NTPL/David Levenson

herbaceous borders. At the nearby Home Farm, you can contrast the traditional farmyard with the noisy, modern piggery and cattle sheds and ask the stockman about the rare breeds of farm animals in the barns.

The stable cafe is a self-service restaurant and is open for lunch and light refreshments. There is also a second hand bookshop.

### Chartwell and Chiddingstone NT Village in Kent

Our second coach outing is arranged for Wednesday 4 July to Chartwell and, hopefully we will also have time to stop and explore Chiddingstone NT Village (see right) not very far away. We will leave



©NTPL/Alasdair Ogilvie

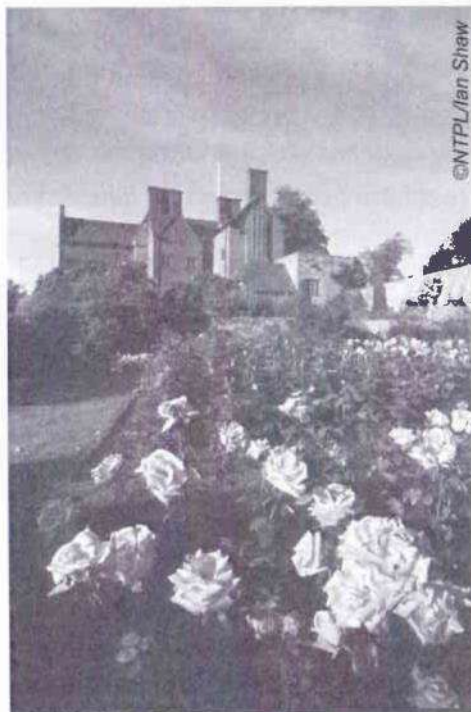
(Continued on page 10)





Osterley House visitor car park on the coach at 9.30 am and aim to return to Osterley by 6.30 pm. The cost of the trip will be £14.00 per person, assuming again that NT membership is held.

Chartwell was the family home of Sir Winston Churchill from 1924



©NTPL/Ian Shaw until the end of his life in 1965. The rooms (see above) and gardens remain much as they were when the family lived there and contain their personal memorabilia, books and family photographs. The beautiful terraced gardens contain the lakes Sir Winston created and Lady Churchill's Rose Garden (see left). Many of Churchill's paintings can be seen in the garden studio of the house.

The visitor restaurant at Chartwell serves lunch and afternoon tea and is highly acclaimed. 🍷



In support of National Trust

## The Friends of Osterley Park

### LIGHT-HEARTED MOMENTS FROM OPERA AND MUSICALS

Christine Fisher (soprano)

Patrick Howard (tenor)

William Rae (baritone)

Anthony Macarthy (pianist)



**Wednesday 25 April 2012**

**7.00pm for 7.30pm**

**Old Brewhouse, Osterley Park**

**Jersey Road, Isleworth TW7 4RB**

Patrick Howard, tenor, and his wife, soprano Christine Fisher, of the Old Farmhouse, Osterley Park, are joined once again by baritone William Rae and pianist Anthony McCarthy to entertain with a programme of light-hearted music from opera and musicals, ranging from Mozart to Bernstein.



**Tickets £9 (Friends), £10 (Non-members)  
to include a glass of wine**

In advance from John James,  
Parkfield Cottage, Osterley Road,  
Isleworth TW7 4PD

(cheques to "Friends of Osterley Park"  
- please send SAE for return of tickets)  
or on the door—please inform John James beforehand  
to provide some idea of numbers

by phone 020 8232 8683

by email [john.james15@blueyonder.co.uk](mailto:john.james15@blueyonder.co.uk)

**Car Parking in the Stable-Yard**

**Please come early**

**Park Gates closed from 7.30pm until after the Concert**





Staircase, West Front  
Photo: John Stacey

Osterley Park, London  
See article on page 14

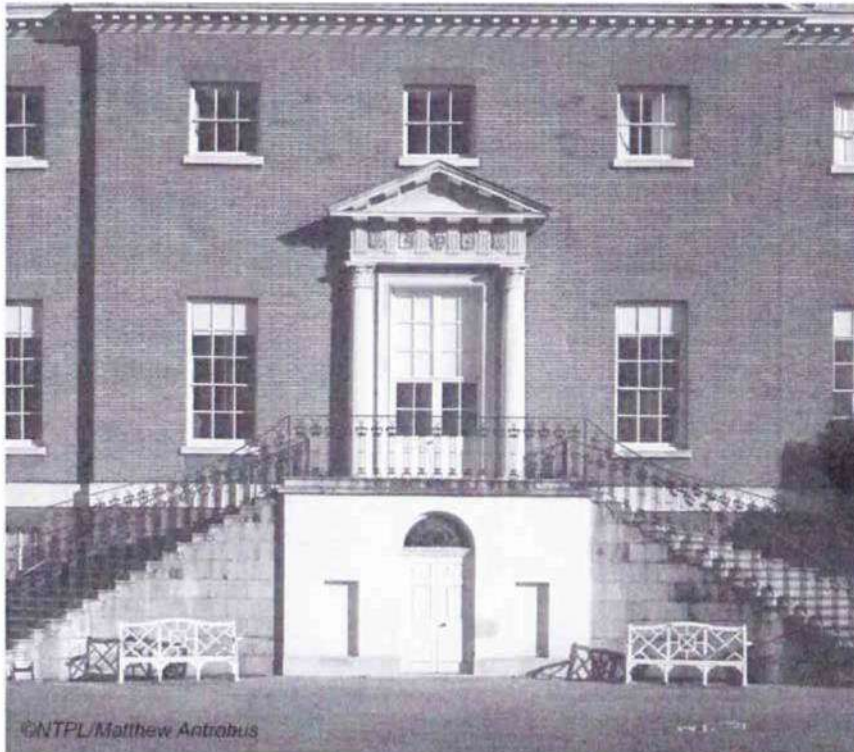


## The Perron at Osterley

(see photos on cover and centre spread)

Margaret Friday

This newsletter is graced by John Stacey's pictures of the elegant staircase or *perron* on the west front of Osterley House leading up to the Long Gallery.



©NTPL/Matthew Antrabus

There is an Adam drawing of 1761 showing a staircase between the towers on this side of the house made for Francis Child. Much of this plan was not carried out - perhaps it was seen as causing too many

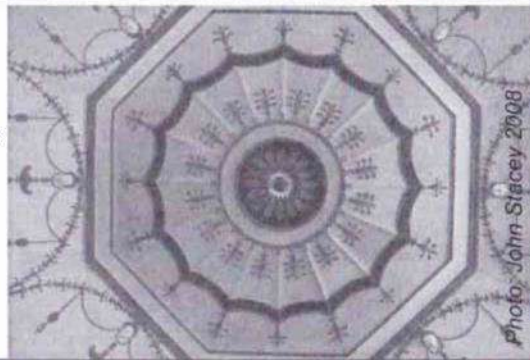


Photo: John Stacey 2008



Artist: Van Dyck—wikimedia

changes to the Elizabethan house. After Francis Child's death in 1763 his brother Robert asked Robert Adam to build a new entrance. The staircase and large door (see page 14 above) along with the Etruscan grotto (see page 14 below—ceiling of grotto) under the stairs all bear the marks of an Adam design.

The idea for this style of staircase can first be seen in England at Queen's House in Greenwich designed by Inigo Jones for Queen Henrietta Maria

(see above) and finished in the 1630s. The horseshoe shaped steps there (see below) are made entirely in stone and lead to a stone balustraded terrace with central entrance doors leading into the great hall. There is a small entrance door underneath the stairs leading into the lower part of the house. Giles Worsley in his book on Inigo Jones sees the staircase as inspired by the architect Buontalenti who used a similar plan at the Villa di Pratolino built for Grand Duke Francesco I in 1569. It would be entirely appropriate if Adam chose this plan initially for another Francis.

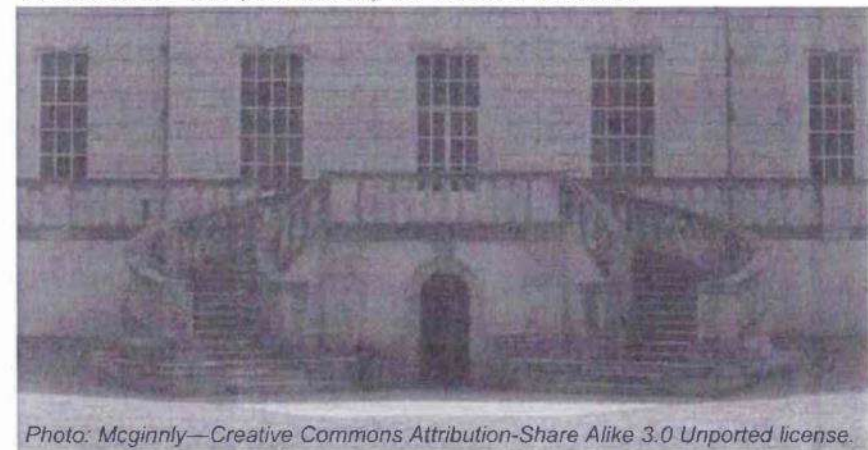
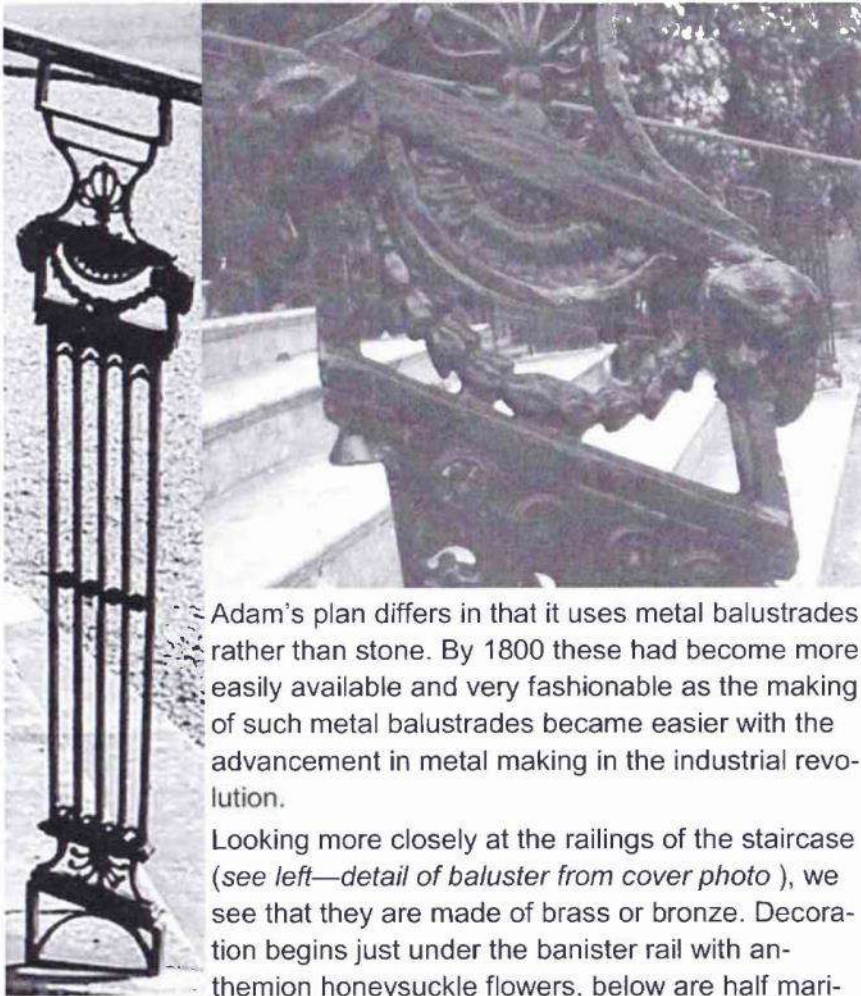


Photo: Mcginnly—Creative Commons Attribution-Share Alike 3.0 Unported license.

(Continued on page 16)



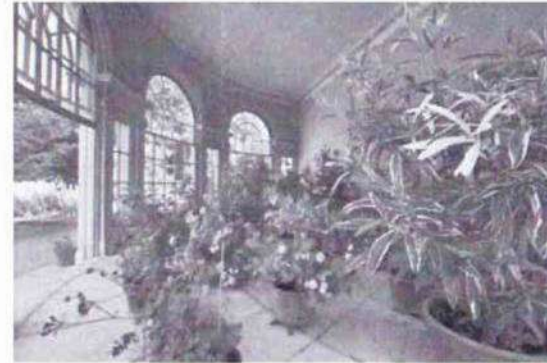


Adam's plan differs in that it uses metal balustrades rather than stone. By 1800 these had become more easily available and very fashionable as the making of such metal balustrades became easier with the advancement in metal making in the industrial revolution.

Looking more closely at the railings of the staircase (see left—detail of baluster from cover photo), we see that they are made of brass or bronze. Decoration begins just under the banister rail with anthemion honeysuckle flowers, below are half marigolds (see above).

The rams' heads are linked by what appears to be a chain of laurel leaves. Some accounts call the heads ox-heads or *bucrania* rather than rams' heads. The baluster is made up of four descending supports with small marigold flowers in the centre on each. These four supports are held by bases which sit on arches. There are two arches on each step giving the whole a light and decorous feeling. At one stage the banister was polished and

the marigolds picked out in gold. The whole would probably have been painted blue as it was the most expensive colour – made with ground lapis lazuli. A fine example can be seen at the Mansion House in the City of London. Although the Osterley staircase is no longer painted in colours, I think you can almost see from John's pictures how resplendent it would have looked in blue and gold.

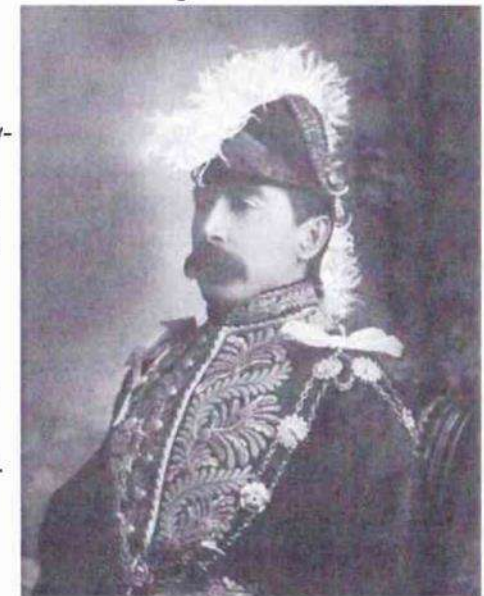


©NTPL/Andrew Butler

The golden and diamond jubilees of Queen Victoria were certainly celebrated at Osterley with easy access to the very fine gardens with orangery, lemon house (see left) and Temple to Pan via this staircase with a good handrail.

Various accounts tell us that the staircase was painted black on the death of Queen Victoria in January 1901. However, the Earl of Jersey and Margaret, Countess of Jersey were actually returning from a trip to India at the time. They went to spend Christmas in Bombay with their good friends, the Northcotes - Lord Northcote (see right) was at the time Governor of Bombay. When they sailed from India, the Queen Empress was reported as being unwell.

Margaret Countess of Jersey



wikimedia

(Continued on page 18)



Perron

recalls hearing the words from her cabin when in Aden "She went off very quietly" and knew immediately that Queen Victoria had died. Violet Powell tells us in her biography *Margaret Countess of Jersey* that in April the Countess of Jersey was invited to become first President of the Victoria League, founded to bring British subjects throughout the world more closely together. Margaret said she was asked because her husband did not hold a political position but had served as Governor of New South Wales in Australia.

(Continued from page 17)




Queen Victoria photographed for her Diamond jubilee, 1897 wikimedia



It was in 1902 that she finished her book *Fifty-One Years of Victorian Life*. Margaret died in 1945 aged 95 and is remembered as the lady who rescued Osterley and made it a famous place for parties. When weddings are held in the house today a favourite place to be photographed is on the terrace or the steps overlooking the great meadow backed by the beautiful balustrade.

Next time you visit Osterley go and take a closer look. Perhaps it is time to polish up that banister again and to see those golden marigolds glowing for our own Queen's Diamond Jubilee.

*Ed's note: The evidence from the National Trust Photo Library (see detail left of a photograph © National Trust / Rupert Truman) is that the marigolds have been painted gold some time in the recent past. If you can remember, please write in and let us know.* 📧

 **The Friends of Osterley Park**  
in support of **National Trust**

## Old Farmhouse, Osterley

3pm Sunday 27 May 2012



On Sunday 27 May, the Howards will once again be opening the gardens of the Old Farmhouse for us to visit and enjoy.

Meeting arrangements 3pm at the Old Farmhouse, Osterley Lane.  
*Directions* from Norwood Green (cars or pedestrians) – go down Osterley Lane; cross the motorway bridge; turn right through the grey gates with the sign to Osterley Park Farm; walk on drive and through black gates to the Old Farmhouse.

*Directions* from Osterley House – take path from stableyard, past public toilets; turn left on to Osterley Lane; turn left through grey gates with the sign to Osterley Park Farm; walk on drive and through black gates to the Old Farmhouse.

To give the Howards an idea of numbers, please inform John James if you would like to attend

at the AGM on 16 May

by phone 020 8232 8683

by email [john.james15@blueyonder.co.uk](mailto:john.james15@blueyonder.co.uk)



## London Visits Summer '12 Wei Hei Kipling

I hope you think that Friends of Osterley rates compare favourably with those of other organisations—the V&A visit to Hogarth's House was priced at £18 as compared with our rate of £9.

I am pleased to report that I have finally arranged a visit to the **Guildhall**, administrative centre of the City of London and the only secular building to survive the Great Fire of London in 1666 (and so probably known to Sir Francis Child the elder as Lord Mayor of London).



Photo: Priorityman [Creative Commons Attribution-Share Alike 3.0 Unported](#) licence

The one and a half hour tour will also take in the **Art Gallery, the Clock Museum and St Lawrence Jewry**. No refreshments though there are cafes nearby. Cost: £7 (£50 for City of London Guide, remainder to Friends). **Please book by 25 April 2012 with names of visitors for Security**. Meeting arrangements: Tuesday 1 May; 10.45am at St Paul's tube station (Exit 1 street level) to walk to Guildhall Art Gallery, off Gresham Street, for 11am tour.



Photo: BPMA museum

Those of you who enjoyed the visit to the London Fire Brigade Museum last April may be interested in our visit to the **British Postal Museum Collection Store** out in Loughton, Essex. The Store houses a range of items from

some small objects like office equipment, and telephones, to the national collection of letters boxes (in excess of 200 boxes), as well as the BPMA's collection of motorised vehicles. The visit will comprise two 30 minute tours with refreshments in the middle. Cost: £7

(£5 to Museum, £2 to Friends). **Please book by 3 June**. Meeting arrangements: Monday 11 June, 2.40pm at Debden tube station (Central line travelling east —please allow 35 mins from Chancery Lane) to walk to The British Postal Museum Store, Unit 7 Imprimo Park, Lenthall Road, Loughton, IG10 3UF for 3pm visit.



Photo: Imperialista [Creative Commons Attribution-Share Alike 3.0 Unported](#) licence

Please pay attention for your visit to the Royal Ballet School at **White Lodge**. This Georgian house, formerly a royal residence, in Richmond Park now hosts a museum where you can learn about the daily life of students at The

Royal Ballet School, the history and development of Classical ballet and the fascinating story of White Lodge itself. We hope also to have the opportunity to visit the Salon, the largest of the fine rooms, to go out on to the balcony which affords views of the grounds and Richmond Park beyond and then to see the inner hall. As the location is a working school, it is not possible for us to go on a full site tour. Cost: £5 (to Friends). **Please book by 3 June**. Meeting arrangements: Tuesday 26 June, 1.25pm at Sheen Gate, Richmond Park to take shuttle bus to White Lodge. There is a limit of 16 people in the shuttle bus and the return to Sheen Gate is at 2.45pm, but it may be possible to share cars and park at White Lodge if anyone would like to spend longer there. Car parking needs to be booked in advance. Otherwise, it is a 15 mins walk up an incline from Sheen Gate to White Lodge (and down on the return). Please indicate preferred arrangements on form.

The visit to White Lodge in late June counts as your July London Visit and, as in previous years, there will be no London Visit in August in view of people's holidays and so much going on. ☺






## from the Editor

Well, here is a major mailing—in addition to the newsletter, you will find the AGM papers with a

proposed amendment to the Constitution. All the paperwork to do with renewals of membership and 100 Club is included together with an option for asking the tax man to give the Friends some money if you are a tax payer yourself. Arrangements have been made for coach trips in May and July so a booking form is enclosed together with the booking form for London Visits. Events advertised just in the newsletter itself include the Howards' concert later this month and their garden visit in May. I hope that you will find something to your taste.

Those of you who are volunteers may have already met the new Property Manager, Neil Cole. He came to our Committee meeting this month and provided an interesting and useful contribution. He will be speaking after our Annual General Meeting on 16 May—probably offering an overview of who he is and where he has worked, followed by an overview of Osterley, challenges that lie ahead, the current financial position and then taking questions. It should be a very interesting evening.

Unfortunately, with all the other things I do, I don't find myself at the House often enough these days. I am intrigued by the news that the Kitchen Range has been restored and that it will be used as part of the visitor experience this season. I look forward very much to seeing (and perhaps smelling) the results. 



## from the Diary

### “Friends” Events and Excursions

- Wed 25 Apr Concert: Light-hearted moments  
from Opera and Musicals (page 11)
- Wed 25 Apr Booking deadline for Guildhall (1 May)
- Tue 1 May London Visit: Guildhall
- Thu 10 May Excursion: Wimpole Hall & Farm
- Wed 16 May Annual General Meeting (see front inside cover)
- Sun 27 May Members' Visit: Old Farmhouse, Osterley (page 19)
- Sun 3 Jun Booking deadline for BPMA Store and White Lodge
- Mon 11 Jun London Visit: British Postal Museum Archive Store
- Tue 26 Jun London Visit: White Lodge
- Wed 4 Jul Excursion: Chartwell

For details of coach excursions—see pages 8 to 10

For details of London Visits— see pages 20 and 21

### Osterley Park House—a selection (see page 5)

7 Mar to 29 Apr and 5 Sep to 5 Nov except Mon, Tue	House open 12 to 4.30 Garden open 11 to 5 Café open 11 to 5 Shop open 12 to 5 2nd Hand Bookshop 12 to 4
2 May to 2 Sep except Mon, Tue	House open 12 to 5 Garden open 11 to 6 Café open 11 to 6 Shop open 12 to 6 2nd Hand Bookshop 12 to 4
Open on Good Friday and Bank Holiday Mondays Last admission 30 mins before closing	

**Next newsletter** due to be published in June 2012.  
Any contributions to the Editor by **2 June**.  
The Editor may change or reduce contributions if necessary.