

# The Friends of Osterley Park

in support of   
**National  
Trust**

## *NEWSLETTER*

Issue 76 SPRING 2010 £1 (free to members)

### Useful contacts

#### Chairman

Ian Conacher  
020 8560 8523

#### Membership Secretary

John James  
020 8232 8683

#### Newsletter Editor

Wei Hei Kipling  
020 8840 5939  
28 Airedale Road  
London W5 4SD  
kiplings@tiscali.co.uk

NTS Marigold on the Garden Lake  
Osterley Park  
see article on page 14  
Photo: John Stacey

Printed by:  
Colormax (West Ealing)  
020 8566 1155



## Are you a member of the National Trust?

If you are, or if you hold a **National Trust Volunteer's Card**, why not enhance your membership by joining like-minded people at the **Ealing National Trust Association**.

We hold a monthly lecture, a wide variety of London visits, day outings by coach during the summer months and holidays in the UK and on the continent. All this plus "special events" during the year for a membership fee of £9 per annum.

Interested? Then telephone 020 8997 8630 or 020 8997 1023 for further details and an application form.

## Friends of Osterley Park Annual General Meeting Old Brewhouse, Osterley Park Wednesday 19 May 2010

Doors open 7pm

Meeting starts 7.45pm

NB Park Gates close 7.30pm

### Speaker: Myrddin Richards

who has lived for most of his life  
in Osterley Park



**Wine will  
be served**

Car Parking in the Stable-Yard

Please come early

Park Gates will be closed  
from 7.30pm  
until after the Reception



**1st draw  
"100 club"**



## from the Chairman Ian Conacher

*Ed's note: The Chairman's Report for the year ending 31 December 2009 is in the papers for the AGM and Ian has included some comments on 2010 so please look in the AGM papers for this item.* [link](#)

## Osterley Day

Sunday 27 June 2010

...free activities and entertainment for all the family, including music and dance, Art in the Park, face painting, craft activities and much more....

### "Friends" major fund-raising event

WE NEED DONATIONS OF GOODS

- NEW OR NEARLY NEW - FOR OUR STALLS:-

THE TOMBOLA STALL gives a prize every time!  
needs donations of items large and small -unwanted gifts,  
cans of soft drinks, etc.  
(no chocolate or things which can't stand the sun)

THE BOOK STALL

sells good clean hardback and paperback books,  
CDs and DVDs

Ring Douglas Craik 020 8977 6449  
after 1 June with offers of help  
or to arrange delivery or collection


## from the Property

### Staff Changes

We say goodbye to Visitor Services Manager **Hannah Purcell** and to gardener **Max Battocchi**. As mentioned in the last newsletter, **Kimberley Blount** (Apprentice House Steward) completed her apprenticeship and so left after Christmas. In addition, gardener **Alex Oliver** completed his fixed term contract on the American Border.

**Rhian Morris** finishes as **Emily Toettcher** (Audience & Community Development Manager) returns from maternity leave.

New arrivals include **Mark Rudd** (Assistant Warden), **Ed Turnbull** (Gardener) and **Kate Churchill** (Trainee House Steward).

The Property are also recruiting for a Visitor Experience and Marketing Manager to replace Hannah Purcell. 

### Volunteers at the House

This season, there is a new volunteer role in the House of "Visitor Welcome" replacing the role of "Front of House". In the past, front of house volunteers have sometimes each looked after separate tasks, eg one person checked tickets and then another person sorted out the interpretation whereas the new role envisages a single Visitor Welcomer providing a personal service from the time a visitor or group enters the House until they go to the Great Stair and start looking around the House. Ideally, there will be three Visitor Welcome volunteers at the family entrance and another two in the Entrance Hall (if there is a shortage, then the Entrance Hall will not be used as an entrance to the House).

With respect to the new opening hours, the House can open with six volunteer room guides on duty from 12noon to 4.15pm (with a 30mins lunch break). One to three volunteers on duty from 1pm to 3pm will provide tea / lunch relief while additional rooms can be opened if more volunteers are available, possibly from 12.30pm to 4.30pm 




### Audio Visual Guides (pda s)

Of the visitors who used the new audio visual guides last season and provided feedback, over 80% found them easy to use and felt that the information provided was at an appropriate level. Over 90% felt that



they helped to bring the House to life, would recommend the guides to others and would use the guides again.


The audio visual guides continue to be free but there is still a limited number, partly because of problems with the hardware.

Room guides should also note that the information for many of the rooms includes questions for the visitor to answer which may be re-directed to a room guide. The audio visual guide may, indeed, provide a visitor with enough information so that they can ask a room guide interesting questions. There will also always be visitors who do not use audio visual guides: there may not be any handsets available at the time; or a visitor may prefer to obtain their information in another way. 

### Cameras

Amateur photography (including filming) without flash is now permitted in historic interiors of the National Trust at the Property Manager's discretion. As with outdoor photography, any photographs taken are strictly for private use. If a visitor attempts to set up a tripod, this might indicate professional photography or, at the very least, inconvenience other visitors and should be challenged by the




room guide. Visitors taking a lot of photographs may be asked to sign a disclaimer to state that the photography is not for commercial use. Most digital cameras have a museum setting in which the flash is switched off—however, it is very easy for the flash to be automatically switched on again (as your editor found to her cost! 

## The Old Oak



Those who attended the 2009 Autumn Reception may remember Jeremy Dalton mentioning an English oak tree in the Great Meadow that was possibly the oldest tree on the estate. I finally had a chance to take a photograph (see above) of the old oak in December and you can see its size from comparison with the two people (Jeremy and me) next to it. The low crown of the tree and the surrounding brambles provide some natural protection, discouraging the cattle who sometime graze in the Great Meadow from

getting too close and compacting the soil.

Please remember to look out for the oak processionary moth caterpillars from April to June (see right & article pages 7 to 9 in Summer 2009 newsletter) and report any sightings to the House. In late May and early June before becoming a moth is when the caterpillar poses the most risk to human health. **You must not attempt to handle the larvae caterpillars yourself, or disturb their nests.** 



Group of larvae feeding on an oak  
[www.forestresearch.gov.uk/](http://www.forestresearch.gov.uk/)

## London Visits Summer '10 Wei Hei Kipling

Our visit to Spencer House in February demonstrated another advantage of group visits—because the guides knew that we were from Osterley Park, they were able to tailor their comments to refer to matters of common interest, eg referring to furniture designers whose work was also present at Osterley.

For the summer, I have again arranged a number of visits to places in London which I hope will be of interest.

**St George's Bloomsbury** (top of



Photo: Keith Roper (flickr)

*church spire, see above*) is the sixth and final London church designed by the leading architect of the English Baroque, Nicholas Hawksmoor. Originally consecrated in 1731, St George's was reopened to the public in 2006 following a five-year restoration. Today, St George's is a thriving parish church, concert venue and centre for community arts and education located at the heart of Bloomsbury. A 45 mins private guided tour has been arranged for



Photo: Sherrif of Nothing (flickr)

Tuesday 20 April.

Cost: £7 (£5 to church, £2 to Friends)

Meeting arrangements: 10.40am at Holborn tube station (High Holborn exit) to walk to St George's Bloomsbury, Bloomsbury Way next door to the Bloomsbury Thistle Hotel. (WC1A 2HR), for 11am tour. Refreshments not included in cost but there are many cafes in the area.

Hertford House is home to the **Wallace Collection** (see left). It was built be-

(Continued on page 8)

tween 1776 and 1788 by the 4th Duke of Manchester because there was good duck shooting nearby and possibly from the proceeds of the sale of his house in Berkeley Square to the Childs in 1767. On Tuesday 11 May, there will be a guided tour looking at some aspects of the architecture of the house as well as the Wallace Collection as a whole. Cost: £8 (£6 to Wallace Collection, remainder to Friends) . **Please book by 23 April.** Meeting arrangements: 10.45am at Bond St tube (inside West One Shopping Ground Level by Boots) to walk to Hertford House, Manchester Square, London W1U 3BN for 11.15am tour (1 hr 15 mins) Refreshments not included in price but there is a café on site.



Photo: James.Stringer (flickr)

Sir Francis Child the elder and his son, the younger Sir Francis Child, were Lord Mayors of London in respectively 1698 and 1731 so they would not have known the current **Mansion House** (see left), started in 1739, a rare surviving Georgian

town palace in London. With its magnificent interiors and elegant furniture, the Mansion House provides the Lord Mayor of the City of London with living, working and entertainment space. Built in the age of Hogarth, the Mansion House, then as now, is a symbol of the City of London as the world's leading international financial and trading centre. A private guided tour has been arranged for Monday 7 June. Cost: £5 donation to Friends. **Please book by 17 May and advise names of all people for whom tickets are being requested as this information is required by the Mansion House.** Meeting arrangements: 1.55pm at Bank tube station exit 8 at street level (across the road from the Mansion House) to walk to Mansion House, Walbrook for 2pm tour (45mins to 1hr). No refreshments available.




Photo: Julian Mason (flickr)

Another public building of the long eighteenth century was the Royal Hospital for Seamen in **Greenwich**, now commonly called the Old Royal Naval College (see above) and housing the University of Greenwich. Our own Margaret Friday will be leading a one and a half hour tour of the area from 11am on Tuesday 6 July, including access to rooms not normally open to the public. Cost: £5 (£2.50 donation to ORNC, £2,50 to Friends). Meeting arrangements: 11am at Cutty Sark DLR (street level) to start tour. (If anyone would like advice on how to get to Greenwich or would prefer to be escorted, please phone Wei Hei to discuss further.)



Photo: Sizemore (flickr)

London Visits are being arranged for later in the year. In particular, there will be a visit to Horace Walpole's Strawberry Hill (see left) on Monday 25 October—further details and booking form in the next newsletter. In the meantime, the exhibition "Horace Walpole and Strawberry Hill" is on until 4 July 2010 at the Victoria & Albert Museum . This exhibition recreates Walpole's pioneering collection in the context of the rooms at Strawberry Hill. Not all of the objects will be returning to

Strawberry Hill afterwards so Friends may wish to visit this exhibition (there is an admission charge). 



# The Friends of Osterley Park

in support of  
National  
Trust

## WELL-LOVED SONGS FROM OPERA AND MUSICALS

**Christine Fisher (soprano)**

**Patrick Howard (tenor)**

**William Rae (baritone)**

**Anthony Macarthy (pianist)**



**Saturday 8 May 2010**

**7.30pm to 9.15pm (with interval)**

**St. Mary's Church Millenium Hall**

**Osterley Road, Isleworth**

The quartet returns to entertain with a concert of popular songs, duets and trios. Highlights will include:

"La donna e mobile" from 'Rigoletto',  
"Musetta's Waltz Song" from 'La Boheme',  
"Valentine's aria" from 'Faust' and  
a selection from 'Westside Story'.



**Tickets £10 each (to include wine and nibbles)**

**In advance from John James,  
Parkfield Cottage, Osterley Road,  
Isleworth TW7 4PD**

**(cheques payable to "Friends of Osterley  
Park" - please send SAE for return of tickets)  
or on the door**

## from the 100 Club

Ron Piper

The final draw for the current competition was held at the pre-season training meeting for Mobility Volunteers on 22 February.

Congratulations to the winners who were:

- £100 Miss O J Bray
- £ 60 Mrs A Conacher
- £ 40 Mrs R Paterson
- £ 25 Mrs P James
- £ 15 Mrs M Milner



Total income for the year was £1,770 of which £885 was given as prizes with a similar sum available for projects at Osterley.

On a personal note, I regret that, with my on-going medical problems, I am unable to continue the organisation of the 100 Club.

I am pleased to know that Douglas Craik will run the Club, at least for the time being, and I trust that all members during my tenure will continue their support when he takes the helm.

With very best wishes for the continuing success of the 100 Club.

Please note that the 100 Club is a private lottery and so shares can only be allocated to paid up members of the "Friends".

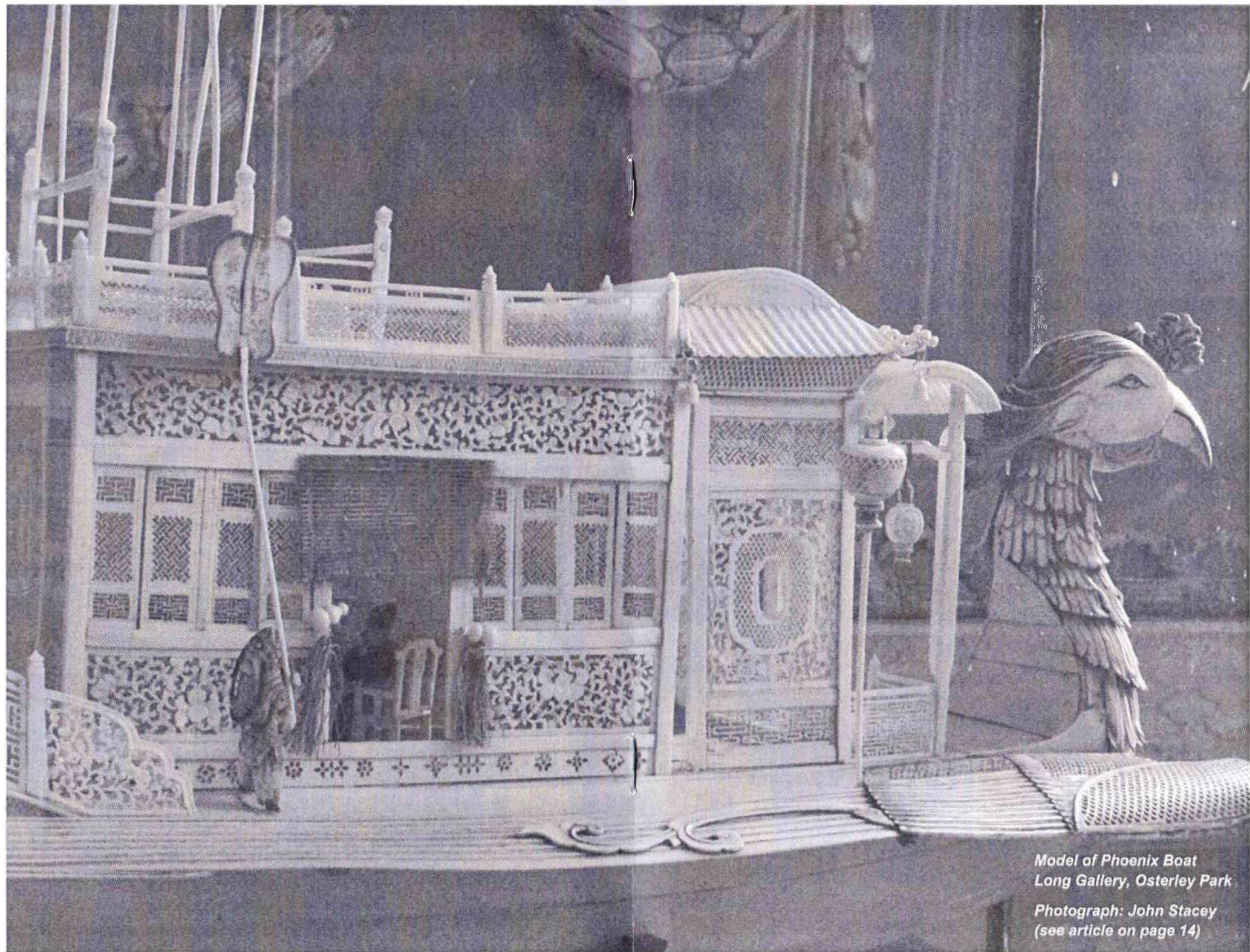
*Ed's note: The first draw of the 100 Club, organised by John Robertson, was held on 24 March 1999 with a first prize of £90. Ron Piper took over with effect from 1 January 2002. and so has been running the 100 Club for more than eight years now. I am sure we all wish Ron the very best in his retirement. 📄*

## Williams & Glyn

Wei Hei Kipling

Royal Bank of Scotland (RBS) has begun (4 Mar 2010) the auction of 318 branches in a process that may see the Williams & Glyn brand return to the high street. UBS, the investment bank, advising on the sales process, has sent memoranda to prospective purchasers, including Virgin Money and National Australia Bank.

We wait to see what happens. 📄



*Model of Phoenix Boat  
Long Gallery, Osterley Park  
Photograph: John Stacey  
(see article on page 14)*

## The Story of Boats at Osterley

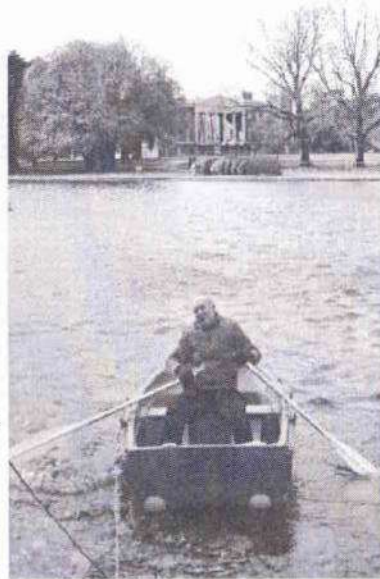
(see photographs on cover and centre spread)

Margaret Friday

In this newsletter, we celebrate the launch of our newest boat to ply the waters of Osterley's lakes. John's photographs show us the Marigold (cover and right) launched on Friday 26 February 2010 and the 18th century ivory model of a phoenix boat (centre spread) in the Long Gallery.

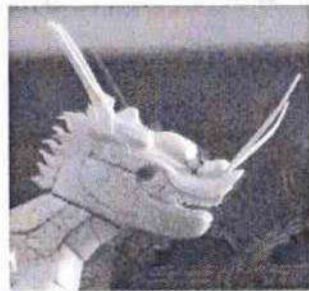
We know that there was at least one Chinese boat on the lake in Robert Child's day. Lady Beauchamp Proctor, visiting in 1772, described "a sampan bought from China" and said that it was a very large vessel. Since Robert Child was a director of the East Indies Company and ships bringing tea from China always required ballast, this boat could have been brought over

from China. Tea was the most expensive drink at that time. Did the Childs display their great wealth by serving China tea to their guests in a Chinese sampan? What an exciting way to impress your guests!



*Our intrepid treasurer battles against the waves while testing the new boat Marigold*

*Photo: John Stacey*



*Dragon head of boat*  
*Photo: John Stacey*

The very elegant ivory dragon and phoenix boats in the Long Gallery were certainly there in Robert Child's day. The dragon and phoenix are directly linked to the emperor and empress of China. Both creatures are mythical beasts embodying a variety of animals. The dragon (see left) symbolises the power of the imperial ruler in China. The dragon could live in the sky but also had a

palace deep under water. In the imperial palaces, things used by the emperor were called "dragon". There were dragon beds; the emperor's magnificent throne was the dragon seat; and his ceremonial dress was called dragon robes. The phoenix was a mythical bird that dying was reborn again and again and represented the empress. There were phoenix carriages and phoenix canopies. The phoenix embodied the five virtues of benevolence, righteousness, propriety, wisdom and sincerity—all attributes to which any empress or 18th century lady could aspire.

In Chinese art and literature, the dragon and the phoenix also represented matrimonial harmony and happy marriage. Since there are so many depictions of marriage at Osterley, from the portrayal of a Roman marriage on the front of the house to the Zucchi paintings in the Eating Room and the Gobelin tapestries displaying the loves of the gods, perhaps the beautiful dragon and phoenix boats can be seen as another example of this theme.

In this way, we come to the name of the new boat at Osterley. It is called the "Marigold". This name comes from the address of Child's Bank in the 17th century. The sign of the "Marygold" (pronounced "Mary" as in the name and "gold") seems to originate at Henry Leigh's draper's shop in Fleet Street in 1544. Robert



Blanchard moved to the property in 1661. The street sign (above) still hangs in Child's Bank at 1 Fleet Street and features a golden sun shining down on a golden marigold—the marigold being known as the "sunne's flowre" as it turned towards the sun. Robert Blanchard, goldsmith, married Martha Wheeler, widow of goldsmith William Wheeler, in 1662. When Francis Child married their daughter Elizabeth Wheeler on 2 October 1671, some joked that he had indeed "married gold" as Elizabeth was heiress to two goldsmiths' fortunes! Initially times were hard as the whole family lived through the plague which killed 70,000 Londoners in 1664-5 and the Great Fire of 1666. Child's premises were not damaged but it was decided to

*(Continued on page 16)*



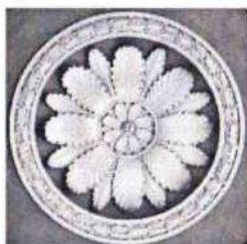
rebuild the wooden Temple Bar. Christopher Wren designed the splendid Temple Bar of Portland stone which can now be seen in Paternoster Square next to St Paul's Cathedral.

Blanchard and Child acquired the property next door which was next to the new Temple Bar and moved to their extended premises

in April 1673, hanging the sign of the Marygold outside. In 1677 a London directory listed Blanchard and Child as partners "at the sign of the Marygold in Fleet Street". At that time, there were 44 goldsmith-bankers in London. Streets were not numbered and so signs were essential to identify a property or business. Today, only our pubs still use signs but in the 17th century the sign was all important. Child & Co's earliest bank notes and cheques were printed on handmade paper water-marked with the sun and marigold.



Logo on cheque from Child & Co today



The marigold continues as the emblem of the Child family. A brief look at Osterley House confirms this. Look up as you reach the top of the grand steps of the transparent portico, and you can see the huge plaster marigold above (see left). Many rooms on the principal floor include a

frieze of marigolds. Ceilings, fireplaces, carpets, furniture and even door furniture bear representations of the marigold.

This of course makes "Marigold" the perfect name for our new Osterley boat.

Ed's note: Where are the marigolds below? Answers page 22. 📖



## Marigold to the Rescue (Dog) Alan Rideout

The new Osterley lake vessel, "Marigold", was called out at 18.40 hrs on Friday 12 February 2010 for its first operational mission.

A dog had swam across to the island on the Middle Lake and become marooned so an emergency call was received from the distraught owner.

Head Warden Dalton and Warden Griffiths were scrambled with Duty Manager Rideout in attendance and the rescue craft was duly launched into the dark, icy cold waters. It was manned by the head warden and his trusty companion who rowed across to the island by torch light and captured the hapless animal.

Unloading the said castaway onto the dark slippery bank was a bit tricky but the mission was successfully completed and the wayward dog returned to a grateful owner.

The Osterley crew then safely landed the emergency craft and returned to base.

A very well oiled and satisfactory inaugural operation made possible

and funded through the generosity of the Friends of Osterley.

Ed's note: I heard later that the dog was a rescue dog called Billy who had not been let off the lead very often. 📖



## Name that boat

Wei Hei Kipling

19 entries were received in the competition to name the new boat bought by the Friends of Osterley Park. Staff at Osterley voted on the names and that receiving the most votes was "Marigold". The "winners" of the competition who suggested that name were:

John Stacey and Shirley Scott.

In addition, an honourable mention to Jane Talbot who suggested the name "The Marigold". 📖

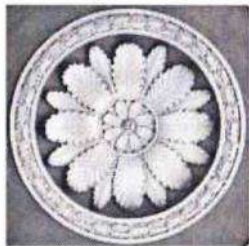
rebuild the wooden Temple Bar. Christopher Wren designed the splendid Temple Bar of Portland stone which can now be seen in Paternoster Square next to St Paul's Cathedral.

Blanchard and Child acquired the property next door which was next to the new Temple Bar and moved to their extended premises

in April 1673, hanging the sign of the Marygold outside. In 1677 a London directory listed Blanchard and Child as partners "at the sign of the Marygold in Fleet Street". At that time, there were 44 goldsmith-bankers in London. Streets were not numbered and so signs were essential to identify a property or business. Today, only our pubs still use signs but in the 17th century the sign was all important. Child & Co's earliest bank notes and cheques were printed on handmade paper water-marked with the sun and marigold.



Logo on cheque from Child & Co today

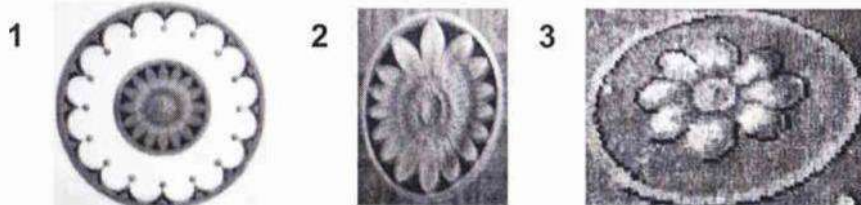


The marigold continues as the emblem of the Child family. A brief look at Osterley House confirms this. Look up as you reach the top of the grand steps of the transparent portico, and you can see the huge plaster marigold above (see left). Many rooms on the principal floor include a

frieze of marigolds. Ceilings, fireplaces, carpets, furniture and even door furniture bear representations of the marigold.

This of course makes "Marigold" the perfect name for our new Osterley boat.

Ed's note: Where are the marigolds below? Answers page 22. 🐾



## Marigold to the Rescue (Dog) Alan Rideout

The new Osterley lake vessel, "Marigold", was called out at 18.40 hrs on Friday 12 February 2010 for its first operational mission.

A dog had swam across to the island on the Middle Lake and become marooned so an emergency call was received from the distraught owner.

Head Warden Dalton and Warden Griffiths were scrambled with Duty Manager Rideout in attendance and the rescue craft was duly launched into the dark, icy cold waters. It was manned by the head warden and his trusty companion who rowed across to the island by torch light and captured the hapless animal.

Unloading the said castaway onto the dark slippery bank was a bit tricky but the mission was successfully completed and the wayward dog returned to a grateful owner.

The Osterley crew then safely landed the emergency craft and returned to base.

A very well oiled and satisfactory inaugural operation made possible and funded through the generosity of the Friends of Osterley.

Ed's note: I heard later that the dog was a rescue dog called Billy who had not been let off the lead very often. 🐾



### Name that boat

Wei Hei Kipling

19 entries were received in the competition to name the new boat bought by the Friends of Osterley Park. Staff at Osterley voted on the names and that receiving the most votes was "Marigold". The "winners" of the competition who suggested that name were:

John Stacey and Shirley Scott.

In addition, an honourable mention to Jane Talbot who suggested the name "The Marigold". 🐾

## Excursions 2010

Spanish Room, with its gilded leather walls (*and ceiling see right*).

The family's collection of art is outstanding, with paintings by Rubens, Van Dyck, Titian and Brueghel. In 2006, the magnificent Guido Reni detached fresco, 'Separation of Night from Day', was re-mounted on the ceiling of the 18<sup>th</sup> century Library, - a significant achievement of the

(Continued from page 19)



©NTPL/James Mortimer

Trust's conservation work. The largest private collection of Egyptian artefacts in the UK is at Kingston Lacy.

In the formal garden behind the house there stands one of only two genuine Egyptian obelisks in the UK, - the other being Cleopatra's Needle beside the Thames. A short stroll across the beautifully manicured lawns, with their strutting peacocks, lie the restored Japanese Gardens, but, if you prefer more exercise, the house is surrounded by hundreds of acres of park and woodland crossed by way-marked walks.



© Skyscan Balloon Photography.  
Source: English Heritage Photo Library.

**West Park Gardens** (5 August)  
The ninety acres of West Park Gardens (*see left*), originally laid out in the early 18<sup>th</sup> century, were originally inspired by the magnificent French gardens of Versailles and the Loire Valley. The estate was the seat of the De Grey family from the 13<sup>th</sup> century until as recently as 1917.

The Gardens are noted for their rare survival of the formal 18<sup>th</sup> century layout of wooded walks and canals, centred on the architectural highlight of the pavilion designed by Thomas Archer in 1709. Subsequent generations added garden buildings such as the Bath House and the Chinese Pavilion, valuing the special atmosphere of

the established garden even when more fashionable landscapers, such as Capability Brown, would have swept it away.

In 1839, the old manor house was replaced by the present mansion, designed by Thomas, Earl de Grey, an enthusiast for 18<sup>th</sup> century French architecture. New formal gardens were laid out. The Orangery, Italian Garden and Parterre also date from the 1830s.

With this edition of the Friends' Newsletter, you will find a Booking Form for the May to August day-trips. Despite the inevitable price rises, I hope that this year's programme meets with your approval and that we will continue to have your usual keen support. Since the Annual Holiday failed, I hope that the added day-trip in September will prove a worthy treat. Details of the visit to Broughton Castle, the magnificent home of Lord and Lady Saye & Sele in Oxfordshire, and the visit to Belton House in Lincolnshire will be posted in July's Newsletter. Meanwhile, if you have access, it may whet your appetite to look up Broughton Castle on the internet and you can of course read a little about Belton in the NT Handbook. [ntb](#)

## Visit to Old Farmhouse, Osterley

On Saturday 22 May, the Howards will once again be opening the gardens of the Old Farmhouse for us to visit and enjoy.

Meeting arrangements 3pm at the Old Farmhouse, Osterley Lane.



*Directions* from Norwood Green (cars or pedestrians) – go down Osterley Lane; cross the motorway bridge; turn right through the grey gates with the sign to Osterley Park Farm; walk on drive and through black gates to the Old Farmhouse.

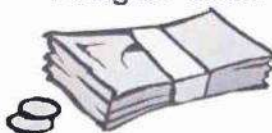
*Directions* from Osterley House – take path from stableyard, past public toilets; turn left on to Osterley Lane; turn left through grey gates with the sign to Osterley Park Farm; walk on drive and through black gates to the Old Farmhouse.

Please inform Ian Conacher at the AGM on 19 May if you would like to attend or, if necessary, phone him on 020 8560 8523. [ntb](#)

## from the Treasurer


Electricity Bill, Council Tax, your Friends of Osterley Park renewal etc..... All these payments to remember to do on the right date!

Douglas Craik



It can be a challenge and a nuisance so you can now pay your FoOP renewal by Standing Order. Just complete the enclosed form giving your Bank details and return to the "Friends" Membership Secretary with this year's payment. We will pass it to your Bank so future years' payments will happen automatically.

We have introduced this because we know that those Friends who renew late after reminders have generally just forgotten and this should make it easier all round. As the membership subscription has just been revised for the first time in many years we expect that this Standing Order will be relevant for some time to come.

Unlike a Direct Debit you can cancel this payment anytime in the future by just telling your Bank. 



## from the Editor


Did you identify the all the marigolds on page 16?

Those room guides who saw me in the House at the beginning of March will know that I was taking some photographs in the State Apartment. The answers are:

1. Etruscan Dressing Room—wallpaper
2. State Bedchamber—pedestal of poster on State Bed
3. State Bedchamber—carpet

Even these marigolds in close proximity look very different from each other but the assumption seems to be that all these circular flowers are meant to represent marigolds in view of the importance

of the marigold symbol to the Child family.

The marigold counter (*see right*) encourages children to look out for marigolds around the House (a clicker inside keeps track). Some parents found this too much the week the flower arrangers included marigolds in the arrangements! 



## from the Diary

### "Friends" Events and Excursions

Fri 9 Apr	Excursion: Framlingham Castle (fully booked)
Tue 20 Apr	London Visit: St George's Bloomsbury
Fri 23 Apr	Booking Deadline for Wallace Collection (11 May)
Sat 8 May	Well-loved Songs from Opera and Musicals (page 10)
Tue 11 May	London Visit: Wallace Collection
Mon 17 May	Excursion: Uppark, West Sussex (NT)
Mon 17 May	Booking Deadline for Mansion House (7 Jun)
Wed 19 May	Friends AGM (see inside front cover)
Sat 22 May	Visit: Old Osterley Farmhouse Gardens (page 21)
Mon 7 Jun	London Visit: Mansion House
Mon 14 Jun	Excursion: Blenheim Palace, Oxfordshire
Sun 27 Jun	Osterley Day (Friends stalls see page 3)
Tue 6 Jul	London Visit: Greenwich
Wed 14 Jul	Excursion: Kingston Lacy, Dorset (NT)
Thu 5 Aug	Excursion: Wrest Park Gardens, Beds (EH)
Mon 30th Aug	Coach tour—East Midlands
To Sat 4th Sep	cancelled—see article page 18 onwards

For details of London Visits – see pages 7 to 9

For details of Excursions—see pages 18 to 21 and booking form

### Advance Warning

Wed 1 Sep	Excursion: Broughton Castle, Oxfordshire
Mon 20 Sep	London Visit: Watermen's Hall
Fri 1 Oct	Excursion: Belton House (NT)
Mon 25 Oct	London Visit: Strawberry Hill

## Osterley Park House

Wed 3rd Mar to Sun 31st Oct House open Wed to Sun 12noon to 4.30pm (last entry 4pm)

**Next newsletter** due to be published in June 2010.

Any contributions to the Editor by **6 June**.

The Editor may change or reduce contributions if necessary.