 **The Friends of Osterley Park**
A Supporters Group for the National Trust

NEWSLETTER

Issue 17 June 2009

Useful Contacts

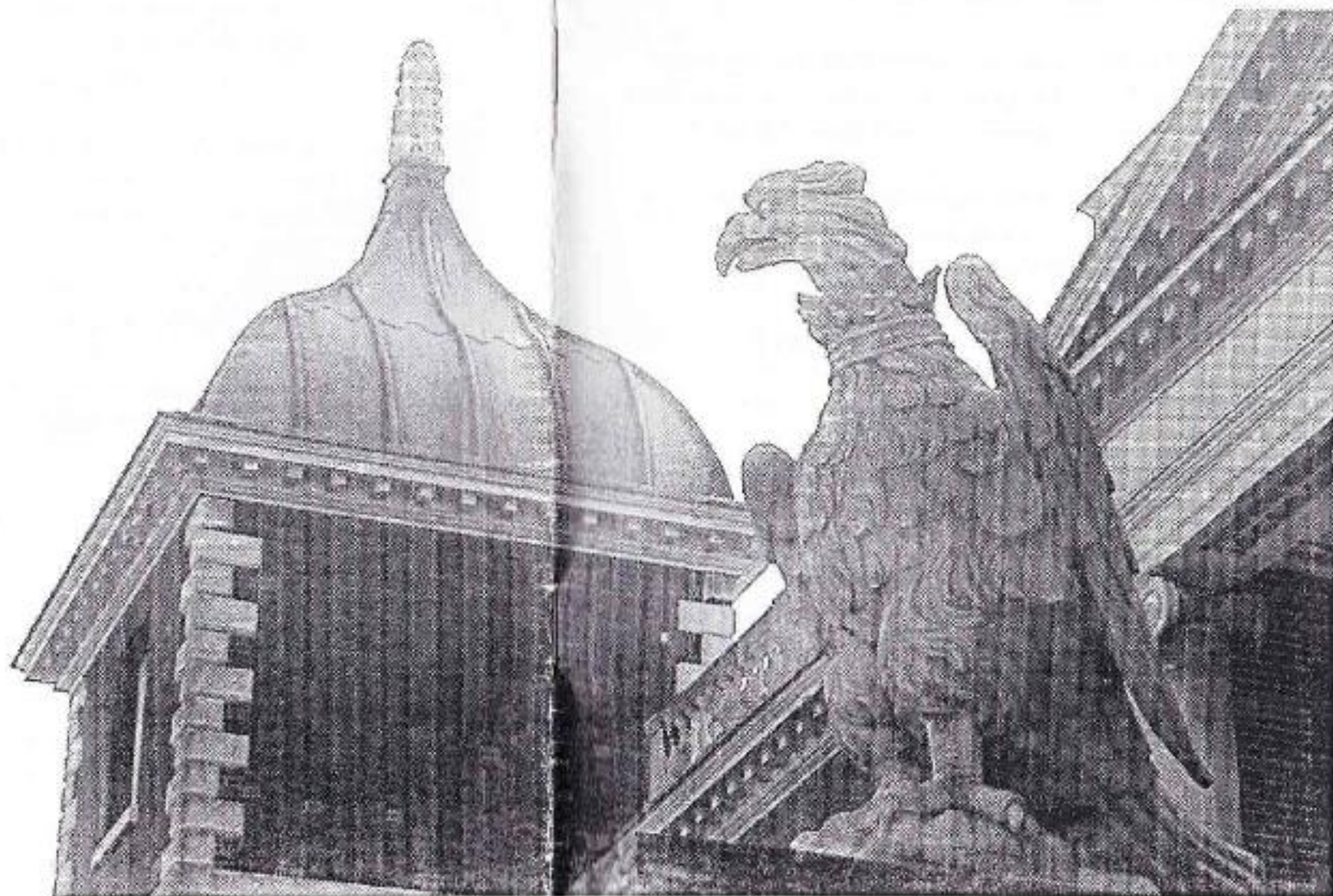
Chairman
Ian Cusack
020 8660 2573

Membership Secretary
John Jones
020 8660 0003

Printed by
Osterley Park House
Robert Adams 01751

Photos and cover design
John Slazey

Copied by
Alpink & Doster
020 8510 6191



OSTERLEY DAY

SUNDAY JULY 10th – 11 am – 4pm.

This is the day when local artists cover the Park railings with their paintings and drawings displayed for sale.

This day also sees the “Friends” major fund-raising event. We shall set up tables in the Stableyard, with a Tombola Stall with a prize every time, and our Bric-a-Brac and Book Stalls.

These rely on the generosity of members donating items for the Stalls, which in past years have raised hundreds of pounds for the “Friends”, and for the National Trust.

For the Tombola stall we need about 600 prizes, from small items such as cans of soft drinks. We also need many larger items – unwanted gifts, cosmetics, wine or champagne!

The Bric-a-Brac stall will sell costume jewellery, ornaments and vases, glasses and fine china and collectables.

The Book Stall will welcome donations of recent hardback books in good condition, and nearly new paperbacks – fiction or non-fiction, but please no textbooks.

Contact Ian or Audrey Conacher on 020 8560 8523 for collection arrangements.

CHAIRMAN'S NOTES.

IAN CONACIER.

The Annual General Meeting on 25th May was attended by about 50 Members, who enjoyed a glass of wine before setting out on a short stroll round the House with Philip King, who pointed out maintenance work in progress on the South front. Later in the year, it was planned to carry out similar work on the East front. This might make it necessary to use the “Family Door” as the entrance for visitors to the House.

On returning to the Brewhouse, Philip spoke briefly about the finances of the Property and the costs of operating and maintenance.

We then proceeded to the business of the A.G.M. The Chairman's Report, which had been circulated with the Newsletter, was approved. Copies of the Accounts for 2004 were circulated: in the unavoidable absence of the Hon Treasurer, these were presented by the Chairman and approved by the meeting.

The existing Committee was re-elected “en bloc”. No nominations or offers – had been received to fill the post of Vice Chairman.

Harold Rogers, who had been the Examiner of our Accounts for the last several years, was thanked for his work in checking the 2004 Accounts. We had feared that he might be moving out of the district, and were glad to learn that he is planning to be on hand to check the books at the end of this year. Our thanks are due to him for carrying out this duty.

My thanks are also due to the Committee, who have given me so much help this year. My wife's mobility problems have resulted in my having extra duties, which have curtailed the time available for the “Friends” affairs. I am glad to say that she is still keen to put in an appearance at the property, and after her debut at the A.G.M. is hoping to be actively engaged on Osterley Day!

NEWS FROM THE PROPERTY

Philip King is at present continuing as Acting Property Manager; the post has been advertised and interviews will be taking place in June. Meanwhile Philip and Alan Rideout are fully occupied in managing the House. As you will see from the Chairman's Notes, the South wall is hidden by scaffolding while essential repairs are carried out.

The Clock Tower on the Stable Tea Room is also shrouded in scaffolding while repairs and repainting take place.

Hannah Purcell has prepared the second edition of the Osterley Newsletter, and a copy of this is enclosed.

The Park has been at its best during the spring days, with trees coming into leaf and bluebells blooming. However, several mature trees have succumbed to old age. Saplings planted as replacements are flourishing, but it will be some years before they cast significant shadows although the Horse Chestnuts planted in the stable Yard are now well grown, about 15-20 feet high and 8 to 24 inches girth.

Our resident pair of swans built their nest in the reed bed as usual, and laid eggs in April. However, they have once more failed to hatch any cygnets.

SUBSCRIPTION RENEWAL.

We are glad to note that the vast majority of Members have already paid their subscriptions for 2005/6, using the form enclosed with the last issue. However, there are still a significant number who have not renewed their membership. Some of these were subscribers to the "100 Club", who have missed the first draw of the new season. For those who have not yet paid, a Reminder Notice included with this Newsletter will allow you not only to renew your Membership, but also to rejoin - or even join for the first time - the "Friends" 100 Club.

CONGRATULATIONS

We have two reasons to congratulate Melanie, the Manageress of the Osterley Tea Room - firstly, on her recent marriage to Tony Pierce, and secondly on her success in the Regional Cookery Competition.

The Competition was held at Basildon Park on Monday, 25th April. The theme was FISH, in tune with the Sea Britain Campaign this year. Entrants were asked to cook a Fish Pie, all using the same recipe and ingredients, and follow this with another dish of their using fish as the principal ingredient. This dish was to be seasonal, linked to local history, and produced on a budget of £1.50.

Mel's fish pie turned out well; she was surprised to find wide variations in taste in spite of all entries being cooked from the same ingredients.

Her own dish was called "All Things Sea and Spice Fish Salad", and consisted of lettuce cups filled cod, topped with a spicy curry sauce, with apricots, raisins, and apples, served with a carrot & mint salad and spicy soda bread. The historic links were with fruit growing in Isleworth in the 18th Century, and with and the spice being imported from the East at that time.

Mel won the Regional Competition, and will now go forward to the National Final in Plymouth later this year. We wish her every success!

OUR COVER PHOTO.

John Stacey's photograph on the front cover shows one of the eagles flanking the front entrance to the House. Notice the coronet round the neck, which was added to the Child's eagle when Robert Childs' granddaughter married the 5th Earl of Jersey.

DAY TRIPS BY COACH

JIM LICKLE

We had a full coach on each of the first two trips of the season, in April to Tynesfield and in May to Ightham Mote. However, booking numbers are low on several of the trips planned for later this summer.

On Monday, 11th July, we are heading for West Wycombe Park, home of the Dashwood family, founders of the "Hell Fire Club" – see Trust Handbook, page 158. We shall stop for coffee on the way at Jordans, where the first Quaker Meeting House was built in the 16th century, and see the Mayflower Barn, reputedly built from timbers of the Pilgrims' ship, the Mayflower.

On Monday, 15th August, we shall be privileged visitors to West Green House Garden, open only to National Trust parties on Mondays. This Tudor house has a celebrated garden and an intriguing collection of follies. For further details, see the N.T. Handbook, page 157.

On Wednesday, September 7th, we shall visit Greys Court, near Henley, a Tudor house with a walled garden, full of old-fashioned roses. – for details see page 128 of the N.T. handbook

notes on all the above properties were given in the March Newsletter, and a Booking Form for these 3 trips is included with this issue. The trip to Audley End on Monday 3rd October is fully booked

LONDON WALKS WITH DORIS SHERWOOD.

Doris has offered to lead further walks in the London area this summer starting at nearby tube or railway stations. The fee for each walk will be £3.00, which Doris kindly donates to the "Friends". Advance booking is not generally required – turn up on the day well in advance of the advertised time!

On Saturday, 23rd July, Doris will lead a walk around Spitalfields, visiting the Market, Christ Church, and Brick Lane. Meet at Liverpool Street station, Main Line, at WH Smith's Bookstall 12 & 13, at 11 am.

On Tuesday, 13th September, we make the first of two visits to Chelsea, including a visit to the Royal Hospital. Meet at Sloane Square Underground Station, District Line, at 11 am.

The second visit to Chelsea is on Wednesday, September 21st, when we will meet once more at Sloane Square Underground Station at 11 am, to walk along Cheyne Walk to Chelsea Old Church, finishing about 1 pm.

Those who wish to continue may join Doris at 2 pm, outside the National Army Museum, for an optional visit to either Carlyle's House (National Trust) or the Chelsea Physic Garden – the subject of a "Friends" Winter Lecture last year. Admission to the garden is £5.00. The National Army Museum is in Royal Hospital Road, and has a café.

On Tuesday, 4th October, we shall meet at Barbican Station, Hammersmith & City Line, at 11 am, for a walk visiting the Church of St Bartholomew the Great and St Bartholomew's Hospital – admission charge £3.00 additional to the walk fee.

On Tuesday, 18th October we shall visit the British Museum, meeting at Russell Square Station, Piccadilly line, at 11 am.

On Monday, 12th December, a visit is planned to the Draper's Hall, one of the City's Livery Companies. There will be an additional charge of £6.00 for this – £3.00 admission and £3.00 as a donation to support the charitable work of the Draper's Company.

For security reasons, advance booking is essential for this visit; please telephone Ann Proffitt on 020 8757 0281 by Monday 12th December.

Meet at Bank Station (Central Line) promptly at 10.45 am as there is a booked time for this visit.

OSTERLEY PARK HOUSE - A NEOCLASSICAL CELEBRATION

MARGARET FRIDAY

Osterley was designed for enjoyment. It was Robert Child's summer holiday home conceived by Robert Adam as a celebration of love and plenty. The scene is set as we approach the house. Above the colonnade on the architrave the celebration of a Roman marriage is portrayed, representing love and fidelity. John Hardy, renowned writer on Osterley says that Adam filled Osterley with classical references to feasting and love.

In the entrance hall we have statues of Bacchus, god of wine, and Ceres, goddess of the harvest. The seating is in the style of a Roman dining couch as found in a triclinium (dining room). It bears ram heads decorated with ribbons. The ram represents flourishing livestock and is the protector of these flocks. The plaster shields and weapons displayed on the walls announce a time of peace and prosperity. This theme is repeated throughout the house.

In the Dining Room the decorative panels show scenes of Romans celebrating a betrothal, a marriage, the birth of the first child and the celebrations that surround the birth. The ceiling is adorned with swags of grapes and hop leaves. The thyrse, Bacchus famous sceptre representing the good times enjoyed whilst drinking and feasting appears on the dining room ceiling and as finials on the very chair legs where guests sit to enjoy the feast.

Each of the State Rooms is designed as a garden of Love. In the English Garden of Love, the state bedroom, the bed is modelled on a classical temple to Venus and a portrait of the goddess of love appears on the headboard along with cupids riding dolphins - another classical reference to the goddess. The central roundel in the ceiling shows Aglia being overcome by love.

In the French Garden of Love the loves of the gods are displayed in the crimson tapestries originally designed by Boucher for Madame de Pompadour's brother. Cupid and Psyche appear over the fireplace and the chairs show garden nymphs and shepherds flirting around the room whilst the shepherd and shepherdess court on the sofa. In one panel we observe Cupid warming an arrow using a magnifying glass. It is said to be kinder to be shot through the heart with a warm arrow!

Next door, in the Italian Garden of Love (Etruscan room) Hector is saying farewell to Andromache in the ceiling roundel. This image of faithful love from the Trojan Wars was a favourite in the 18th Century. Above the mirror, Love is seen nurturing Hope. In the exquisite Adam fireplace, cupids hold roses whilst Antonio Zucchi's paintings show the celebration of Venus' birthday by playing children's games.

In the last room which Adam designed for Osterley - the principal guest bedroom upstairs, also known as the Yellow Taffeta room - we find cupids above the bed and the windows, and discover that the splats in the chairbacks represent sheafs of Cupids' arrows. We know that this is the room where Sarah Anne and the Duke of Westmoreland stayed when they visited Osterley after Robert Child's death.

I wonder if Child family history may have been influenced by the open and passionate celebrations of love presented throughout the house. I have only mentioned a few instances based on the classical themes of love and plenty - but I am sure you can add many more examples from your own observations. Perhaps it should have been no surprise when the young Sarah Anne chose to elope to Gretna Green with John Fane, the man with whom she had fallen desperately in love. The 10th Earl did not have her parents approval; however, every encouragement to follow the feelings of your heart were given in the subjects decorating Osterley.

The passionate sense of pleasure and enjoyment with which Adam and Child imbued Osterley still pervades the place today giving volunteers a feeling of happy satisfaction in the house itself and the surrounding grounds.

The competition that finished on 31st March was again successful and raised £834 for the "Friends" funds – and ultimately for the National Trust. A similar sum was distributed to Members in prizes. The last draw of 2004/5 was made at the last of our Winter Lectures on 16th March. Congratulations to the following winners:-

1 st	£100	No 34	Mrs N. White
2 nd	£ 60	No 95	Mrs G. Froude.
3 rd	£ 30	No 16	Mrs E.M. Bamber
4 th	£ 20	No 21	Mrs E.E. Moores.
5 th	£ 9	No 147	Mrs B.F. Scott.

The competition which started on 1st April has been a little disappointing inasmuch as nearly 30 shares were not renewed. This was offset by several new shares being taken out – but the total has been reduced to 124. Nevertheless, at the first draw at the Annual General Meeting we were able to make £175 available for prizes. Congratulations to the following winners:-

1 st	£100	No 39	Miss G.M. Cousins.
2 nd	£ 40	No 78	Miss C. Diwell.
3 rd	£ 20	No 166	Mrs K.V. Blackett
4 th	£ 10	No 15	Mr P. Lucas
5 th	£ 5	No 49	Mr M. Pfeiffer.

Members who due to an oversight have not renewed their subscription to the "Friends" and the 100 Club will find a reminder form enclosed. The cost of a share to enter the remaining 3 draws, in September, December, and March will be £9.00, which can be paid when renewing their Membership Subscription.

Paid-up members of the "Friends" who are not yet members of the 100 Club can take out shares, at £9.00 each, by sending a cheque to Ron Piper, at 44 Killowen Avenue, Northolt, UB5 4QT, enclosing a stamped addressed envelope

*The Mallards had it too easy
in the shallows, darting for bread
Quicker than the swan – nearly grounding
Slow, Imperial, measured
Dashing ducks depriving
the Orange flash of crust*

*Calmly, that long neck bent
And picked Green Head
Cleanly from the wet
Hung, shirt limp, as from
Laundry tongs, then deftly dumped
Downstream – an easy job.*

*Unruffled, unconcerned, Green Head
Resumed his nonchalant way.*

John Stacey.