 **The Friends of Osterley Park**  
*A Supporters Group for the National Trust*

# **NEWSLETTER**

Issue 69 May 2003

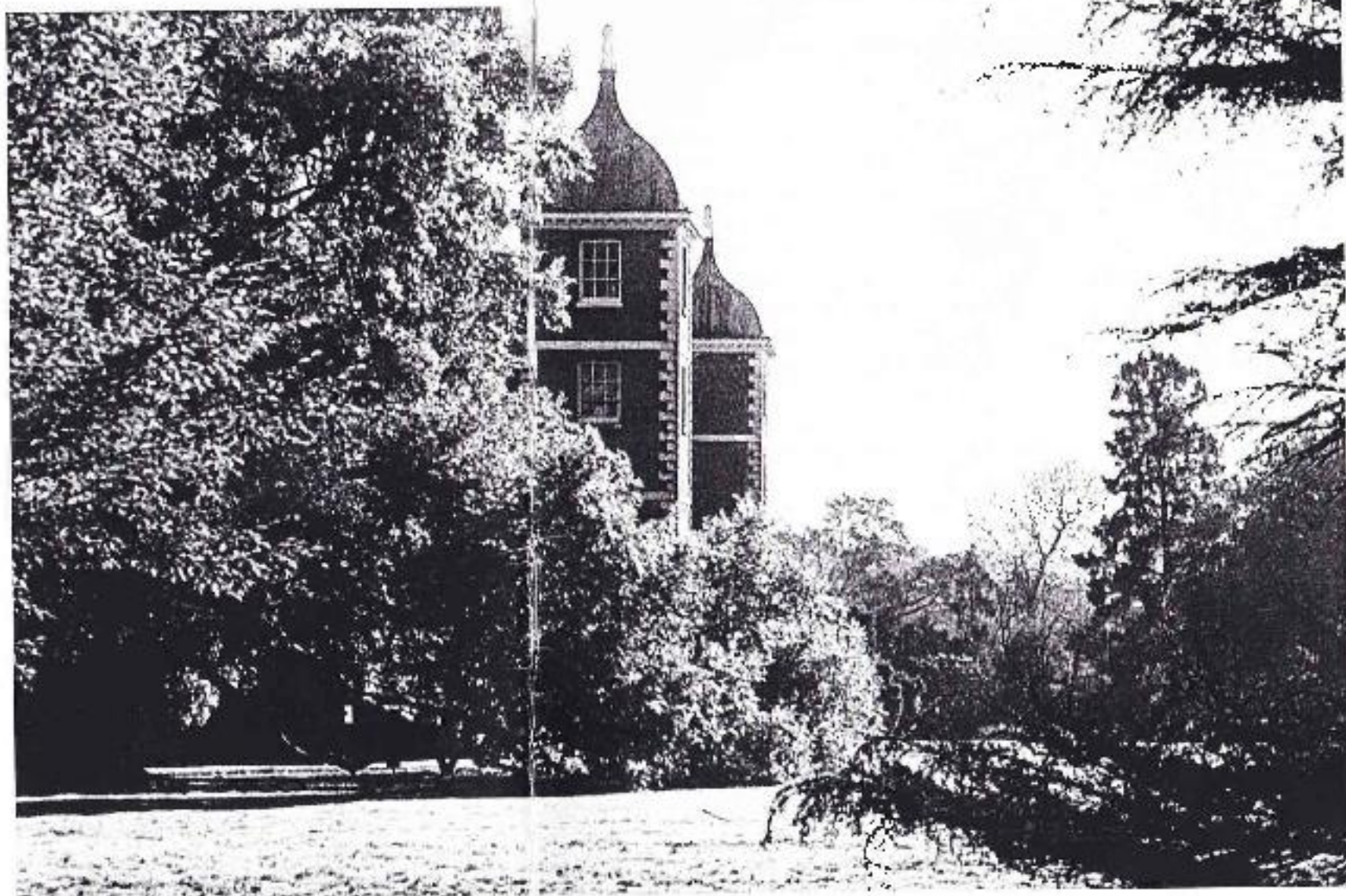
**Leaflet Contacts**

**Chairman**  
Ian Cooper  
020 8560 8523

**Membership Secretary**  
Dawn Bowles  
020 8797 0741

Osterley House,  
from the Pleasure Grounds  
Photo and cover design  
from Stacey

Copied by  
Alison & David  
061 941 20538



WHILE STROLLING IN THE PARK ONE DAY.....  
IAN CONACHER

"Doctor's Orders" for me following my spell in hospital are to take plenty of exercise - and where better to do this than in Osterley Park, even if it means a five minute drive to reach it. The down side is that whatever one's intentions are about time-keeping, the temptation is always to stay longer than planned.



With the changing seasons, at every visit there is something new to engage one's attention. Sometimes there is the need to follow a particular line of enquiry, such as locating the woodpecker that is drumming on the trees near the Temple of Pan, or checking - from a discreet distance - on the progress of the nesting swans.

[[www.nationaltrust.org.uk/places/Osterley/gardencourti.html](http://www.nationaltrust.org.uk/places/Osterley/gardencourti.html)]

Sadly, our resident pair on the Garden lake have not so far succeeded in hatching a brood of cygnets this season. The pen was sitting on her nest from late March right through to early May without result; it is not known whether the eggs were infertile or were the victims of a predator. It may be that the adults will have another try at raising a brood. Meanwhile, last year's cygnet is still residing on the bank of the lake, near the willow tree, and has resisted all his father's attempts to drive him

away. Possibly the unceasing supply of bread brought by visitors makes him disinclined to move.



[[www.ducks.org/waterfowling/gallery/index.asp?duck=89](http://www.ducks.org/waterfowling/gallery/index.asp?duck=89)]

This would appear to be the year of the Tufted Duck. The black and white drakes, with their bright eyes and tuft of feathers on their heads, and the plainer females seem to be more numerous than in recent years. Conversely, there seem to be fewer Mandarins this year. According to a recent television programme, these birds have a habit of nesting in trees - although I have not seen this at Osterley. Mallard have been seen perching on the flat fronts of the branches of the cedars by the lake, and have hatched broods in these trees, leading to major problems in taking the ducklings down to the lake.

Of course we still have the Canada Geese. Watching these move off the driveway when disturbed by road traffic, I noticed for the first time their peculiar stiff-legged gait. How apt it was to give the name "Goose Step" to the ceremonial marching gait of continental troops!

## **"FRIENDS" AGM – 21 MAY 2003**

The "Friends" Annual General meeting was held in the Brewhouse at Osterley on 21 May 2003. This is a brief outline of the meeting, as full minutes will be published in the next Newsletter.

Friends were very pleased to see our Chairman, Ian Conacher, and his wife Audrey looking so well after a lengthy period of illness during the second half of 2002.

The meeting was attended by approximately fifty members, who enjoyed a glass of wine and a chance to chat before business began. The accounts were presented and approved, as was the Chairman's Report. For those members not able to attend, the Chairman's Report is published later in this Newsletter.

The meeting was also an opportunity to make the latest 100 Club draw. Joan Mound was the only lucky winner present; cheques have been posted to the remaining winners.

Following the meeting, Claire Carlin gave an excellent talk on her work as Education Community Officer at Osterley – a work that is greatly valued by the Friends, and supported accordingly. A summary of her talk is also included within this Newsletter.

# **Osterley Day**

**SUNDAY 13 JULY**

**11am – 4 pm**

**Pictures in the Park, children's open-air theatre, displays, music, painting and activities**

**Free admission to the Car Park and House  
(House open 1pm to 4.30pm)**

**PLUS**

**"FRIENDS" BRIC-A-BRAC  
TOMBOLA AND BOOK STALLS**

**DONATIONS ARE URGENTLY  
NEEDED FOR THESE STALLS**

**China and glassware, costume jewellery, ornaments,  
hardback books, unwanted gifts, etc.....**

**Ring Audrey Conacher on (020) 8560 8523 with offers.  
Collection can be arranged.**



## 100 Club

Ron Piper

The 100 Club is ticking along nicely under the new accounting arrangements and invitations are now enclosed for those members whose shares are due for renewal on 1 July. If this applies to you, you will see from the letter that the change in arrangements requires a payment of only £9.00 per share to cover your membership until 31 March 2004. Your subscription will then be £12.00 per share payable on 1 April 2004, and annually thereafter.

During the last six months or so, we have lost quite a few members for one reason or another and, although a few new members have joined, we are still down on last year's figures. So once again I am appealing for new members, or existing ones to take an extra share, so that we can build up the prize money and the amount we make available to the management of Osterley Park. As mentioned above, an initial payment of £9.00 is required for each share now, followed by annual payments of £12.00 from 1 April 2004. If you are interested, please telephone me on (020) 8864 1092, and I will send you an application form.

Finally, two draws have been made since the last Newsletter: at the Winter Lecture on 19 March and the AGM on 21 May. The winners were:

### March

Miss M Warman	1 <sup>st</sup> Prize £100
Mrs M Jenkins	2 <sup>nd</sup> Prize £50
Miss E Hawtin	3 <sup>rd</sup> Prize £20
Mrs J Dingwall	4 <sup>th</sup> Prize £10
Miss J Wye	5 <sup>th</sup> Prize £5

### May

Mr & Mrs Daniel
Mrs Beaumont
Mrs J Mound
Mrs D Coleman
Mrs W Coombe

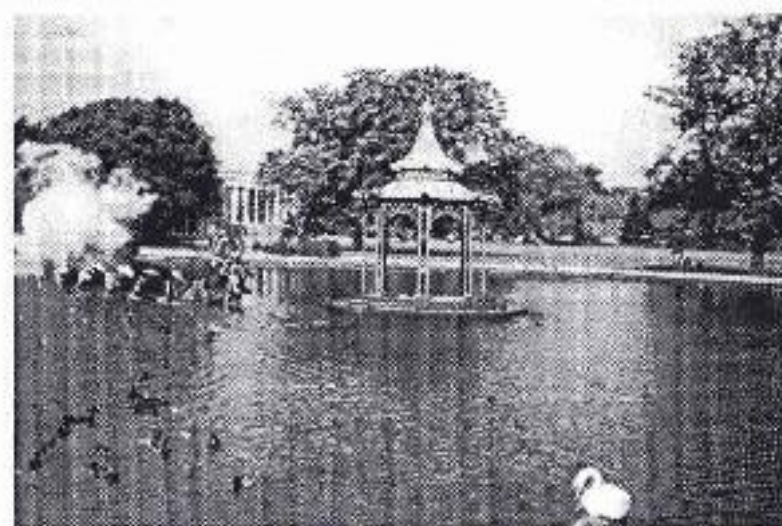
## The Ting is ended, but the memory lingers

As we shuffled round the causeway,  
"Oh!", she said, "it's gone."

I agreed, and went on  
Explaining how decayed,  
Unhistoric, unbuoyant it was  
And the expense, repainting, incurred.

*I stopped then, not saying more  
About the joy I had, the delighted  
Kick I gave, when it was hard ashore!*

"Jayess" © 2003



## What is this T'ing?

Margaret Friday

*"Once you have a t'ing,  
you may say you have a garden"*

A t'ing is an open-sided freestanding fancifully shaped viewing pavilion mentioned in ancient Chinese texts from the late Han Dynasty (25-220 AD). The Chinese believed that a piece of architecture domesticated a wilderness or "borrowed the landscape", giving frame and focus to an area. The purpose of the ideal garden described by Ming author and philosopher Wen Zhongheng was that the visitor should "forget his age, forget to go home and forget his fatigue".

The folding oriental lacquered screen in the South Passage at Osterley has an excellent illustration of a t'ing displayed in the centre of the screen.

The first t'ing in England was built to the designs of William Chambers in 1760 for Augusta, Princess of Wales to adorn her gardens at Kew and is described as an early example of the 18<sup>th</sup> century vogue for Chinoiserie in gardens.

We know that the Child family loved and collected many things in China, including sampans and a junk for the lakes at Osterley. The most recent Osterley t'ing was presented by the Chinese government on the occasion of the Chinese at Osterley celebrations held in 1987. Pictured on page 9 is the t'ing on the Garden Lake with a firebreathing dragonboat.

The Song-dynasty (960-1279) painter Guo Xi outlined the requirements for a garden. First there must be scenery to be viewed, circulation to be followed, pleasure to be enjoyed and spaces for relaxation. In order to view the scenery, pavilions and terraces must be built, along with paths and trails. To enjoy the garden t'ings were erected to inspire the writing of poetry, reading, fishing, boating, dancing and feasting.

Tings on water are described as catching the first evening breeze and visitors could lean forward and touch the leaves of the lotus flowers growing up from the water below. Lotus was the flower of summer lassitude, but peonies flowered in early summer and in Imperial China their luscious blossoms were celebrated with parties where host and guests sipped wine, composed verses and joked as they admired these special flowers from the t'ing.

In the 19<sup>th</sup> century the names for these pavilions expressed this exoticism and beauty: the moon-arising and breeze-coming pavilion, the smelling-the-fragrance-of-osmanthus pavilion in the Lingering Garden. The t'ing at Osterley is no more – its base was wooden and it had slowly rotted away over the last 15 years and the pavilion itself did not stand up well to the many birds that made their residences or favourite resting places on it. When it developed a severe list, it was decided to tow it to a safer place by the side of the lake where it was dismantled. Not everyone admired the Osterley t'ing, but perhaps now we can understand and appreciate the idea of building a pavilion for contemplating the garden.

## CHAIRMAN'S REPORT TO THE AGM 21 MAY 2003

For the "Friends", the year (2002) began with a well-attended series of "Winter Lectures", held for the last time in the old St Mary's Parish Hall. Some excellent speakers attracted appreciative audiences, and there was as usual a buzz of conversation before and after the talks, which showed the success of the evenings as social occasions.

The AGM in May was well attended; after the formal business, Ron Piper conducted the second of the new series of draws for the "100 Club". We are very grateful to Ron for taking over this duty, and to John Robertson, on whose initiative the Club was founded in 1998. This has now become a regular and significant contributor to our funds.

Early June saw the Jubilee Bank Holiday, and the "Friends" sponsored for this special occasion a free concert by the Great Western Preservation Jazz Band. This was attended by a capacity crowd. The band has been engaged for a return visit on 26 May this year, again sponsored by the Friends.

Osterley Day on 14 July was again blessed with fine weather: the Friends Tombola, Bric-a-Brac and Book Stalls were well supported by visitors.

During the season, Jim Tickle's series of day excursions were mostly fully booked, and the weekend trip to Norfolk was as usual sold out within days of being announced. As a result, Jim's cautious budgeting produced a useful surplus for our funds.

Doris Sherwood conducted parties of members on gentle afternoon walks in central London. These were much appreciated by those taking part, and produced some welcome additional income.

During the summer, Audrey had been very unwell, with several visits to A&E and a spell in hospital. At the end of September, I too went into the West Middlesex Hospital after a heart attack, in due course leading to bypass surgery. Audrey was admitted a few days later for observation; she eventually had angioplasty to improve her circulation.

As a result, we were unable to take any active part in the business of the "Friends" for the remainder of the year; however the Committee and Members responded nobly to the challenge; at the Autumn Reception three members volunteered to serve on the Committee. I expressed our thanks for all the good wishes and practical help we received in the March Newsletter. I am delighted to say that this support has continued through into this year.

Financially, the "Friends" are making a visible contribution to Osterley Park. The visitor receives a copy of the Welcome Leaflet on arrival - sponsored annually by the Friends. They then pass the picnic tables - bought by the Friends - and come to the willow by the lake, with the circular seat donated last year by the Friends. We also meet the annual cost of materials for the volunteer gardeners growing flowers for the displays in the House, and the maintenance costs for the self-drive battery cars for the less mobile visitor. More donations have been made this year; thanks are due to the membership whose continuing support enables us to achieve this success.

## LONDON WALKS.

Doris Sherwood has been a contributor to our series of "Winter Lectures" since 1999, and has again offered to lead gentle walks in London during the summer months. These will start from, and finish at, an Underground station. Doris is a knowledgeable and entertaining guide, and the pace is suited to the advancing years of some of our members. Advance booking is not required - just turn up on the day! The cost for each walk is £3.00 per person, which will go to swell the "Friends" funds.

Details are given below. Ann Proffitt has volunteered to assist with administration, and members wanting further information should contact her on 020 8758 0281.

### TUESDAY, 17TH JUNE - CITY CHURCHES.

Meet in the Booking Hall of Mansion House Underground station (District Line) at 1.30 pm. This walk will take us into a number of Wren Churches in the area, ending at Bank tube station. The walk will take about 2 hours, with opportunities to sit in some of the churches!

### THURSDAY, 3RD JULY - HAMPSTEAD VILLAGE WALK - PART I



Meet in the booking Hall of Hampstead Tube Station, on the Northern Line, at 1.30 pm. The walk will take us to the more interesting parts of historic Hampstead Village, lasting about 2 hours, and

[[http://www.greatbritishgardens.co.uk/fenton\\_house.htm](http://www.greatbritishgardens.co.uk/fenton_house.htm)]

finishing at the National Trust's Fenton House - admission free to members - with its collection of historic musical instruments and renowned garden.

### TUESDAY, 16TH SEPTEMBER - HAMPSTEAD VILLAGE PART II

Starting once more from Hampstead tube station at 1.30 pm, this walk will take in Hampstead Wells and include a visit to John Keats House. Duration about 2 hours, and finishing at the tube station.



[[http://www.cityoflondon.gov.uk/leisure\\_heritage/libraries\\_archives\\_museums\\_galleries/keats\\_house/](http://www.cityoflondon.gov.uk/leisure_heritage/libraries_archives_museums_galleries/keats_house/)]

### TUESDAY, 14TH OCTOBER - ROMAN ARENA & FORUM WALK

Meet at the Central Line exit of Bank tube station at 1.30 pm. The walk will take in some of the remains of Roman London, including the Arena in the basement of the Guildhall Art Gallery, for which there will be an extra charge (about £2.50) on top of the £3.00 charge for the walk.



[[http://www.cityoflondon.gov.uk/leisure\\_heritage/libraries\\_archives\\_museums\\_galleries/guildhall\\_art\\_gallery/index.htm](http://www.cityoflondon.gov.uk/leisure_heritage/libraries_archives_museums_galleries/guildhall_art_gallery/index.htm)]



## TRUST EVENTS

Full details of this Summer's programme of events were given in the Events leaflet enclosed with our last issue. Principal among these are **BOLLYWOOD BRASS** in the Park at 8 pm on Saturday 28th June, and **OSTERLEY DAY**, from 11 am to 4 pm on Sunday 13th July. The "Friends" will as usual be manning their fund-raising stalls - see separate announcement!

There has been a change of programme for the **Open Air Cinema** at 8 pm on Saturday, 30 August. The film will now be "*Moulin Rouge*". Prices and booking arrangements remain as previously advertised.

## JAZZ CONCERT - BANK HOLIDAY MONDAY

On Monday 26 May, the Great Western Preservation Jazz Band made a return visit to Osterley Park, following their immense success last year at Osterley's Jubilee Celebrations.

This visit met all our expectations of a great afternoon - the weather was kind, the grounds full and the music was excellent.

This concert was sponsored by the "Friends", and in order to recoup some of the expense, a raffle was held, with 9 prizes. Despite the sterling efforts of those waving raffle tickets and the fact that the concert was free to the viewing public, the raffle raised a slightly disappointing £276.

However, that aside, the afternoon was enjoyed by all, especially a host of very small children trying out their jazz dance steps!!

## MILESTONES AND THE VYNE MARGARET FRIDAY

The first Friends trip of the year, organised by Jim Tickle, took place on 2 April. The coach set out just after 9am, making for Fleet Services in Hampshire.

We arrived at Milestones: Hampshire's living history Museum and explored the exhibits. There were street scenes with reconstructed shops from Victorian and Edwardian times to the 1950's with products from the times on display. Much reminiscing went on - do you remember sherbet dabs? Foxes Glacier mints? Parma Violets? Brasso? Goddard's Silver Powder? Or Black Cat cigarettes?



[<http://www.milestones-museum.com/>]

The industrial collections include machines from Tasker's and Wallis and Steeven and agricultural equipment like the steam reapers in Hardy's *Tess of the d'Urbervilles* or steam driven heavy farm vehicles. The story of Thornycroft was re-enacted in a video presentation by John Isaac Thornycroft. It outlined the rise and fall of his famous engineering company inspired by art and building everything from boats to buses using steam as the method of propulsion. Some of the machines were working and other sections had workers

dressed for the job and demonstrating or explaining how the machines worked. There was an audio guide to help us enjoy all the displays to the full.

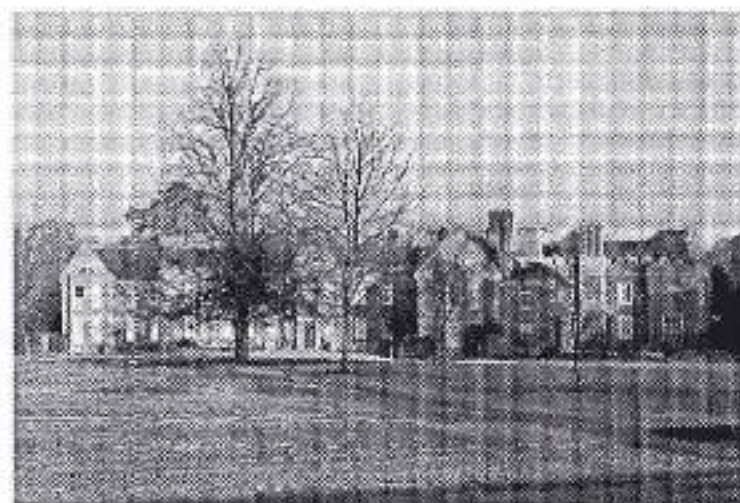
When the Edwardian pub, *The Baverstock Arms*, opened at noon, many of us trooped in for a hand-pulled pint of the specially brewed Milestones Ale. This was a true old-fashioned pub – sawdust on the floor and no children allowed!

The AA, founded in 1905, has their collection of vehicles on display here. It includes uniforms, phone boxes, motor vehicles (series 1 Landrover) and the practical motorbike with sidecar. The famous AA salute was also featured for all to see. Following an excellent traditional Hampshire lunch at the Milestones restaurant we boarded the coach for The Vyne.

The Vyne in Hampshire bears many similarities to Osterley. The original house was medieval and built on low-lying land near waters which were fashioned into extensive lakes with gardens. The house itself has been remodelled and, like Osterley, it has a royal connection - built in the 16<sup>th</sup> Century for William Sandys, Lord Chamberlain to Henry VIII. During the Civil War period the family backed the Parliamentarians. Osterley at that time was owned by Sir William Waller, the Parliamentary General known as William the Conqueror. In the mid-17<sup>th</sup> Century, The Vyne was sold to Claoner Chute whilst Sir Francis Child acquired Osterley in 1711. At the Vyne John Webb architect to Charles II added the portico and steps just as Adam added them later at Osterley.

The Vyne remained with the family until 1957 when it was given to the National Trust along with its contents including the furniture, tapestries, textiles and the exceptionally fine linenfold panelling – another match

with Osterley. John Chute was the owner in Horacio



<http://www.breezesvs.f9.co.uk/critique/drive2work/vyne.html>  
Wimpole's day and he was also a member of the "Committee of Taste" which helped design the interior of Strawberry Hill House. The Strawberry Hill parlour at the Vyne is panelled in dark neo-gothic oak to create a romantic antiquarian atmosphere.

The Trust has spent over £3,000,000 restoring and preserving some of the oldest rooms in the house with splendid results. The summer house is the next project planned to be refurbished.

After exploring the house and garden and taking tea in the Brewhouse, we returned to London at 5pm. Congratulations to Jim Tickle for another successful trip. It was splendid to visit another National Trust house staffed with volunteers who seemed to love The Vyne as much as we love Osterley!

### **JIM TICKLE**

Jim has not only been organising but also conducting his series of Summer Coach Trips for some years past, with great success. Unfortunately, he was taken ill and admitted to hospital just before the May outing to Sutton Hall - which led to some minor communication problems on the return to Osterley.

He has now been discharged home; we hope that he will soon regain strength and be able to lead the excursions for the rest of the season.

### **SIOBHAN SCULLION**

Siobhan Scullion, who had been at Osterley since early 2000 as Visitor Services Manager, left at Easter to take up a new post in her home province of Northern Ireland. During her time at Osterley, she had made many friends and will be greatly missed. Her successor has not yet been appointed.

### **BUDDING WRITERS APPLY HERE.....**

Most of the items in every Newsletter are written by one or two Committee members, and it is always a very onerous task!

We are very keen to receive articles from the wider membership for publication. Why not give others the benefit of your memories of Osterley in "bygone days", or tell of your views of other Trust properties that you have visited.

Please send any articles to Irene Bowles, 9 Gladstone Gdns, Hounslow, TW3 4ND or via e mail to [ibowles@ukgateway.net](mailto:ibowles@ukgateway.net). Items for the next issue should be submitted by 20 August.

## **Volunteers Wanted for the House**

At the AGM on 21 May, Philip King informed us of a new way in which the recruitment of Volunteers is to be developed this year.

More recruits are urgently needed to increase the number of Room Stewards available to present the House to the visiting public. The House is open from Wednesday through to Sunday, and Volunteers would be asked to work ideally two sessions per month, from 1.00 pm to 4.30 pm, on days to suit them. There is a particular need for help at weekends.

At 2pm on the first Tuesday of every month, there will be an introductory training session on the role of the Volunteers at the House, particularly Room Stewards. These sessions will be led by Philip, and will take place in the Brewhouse.

In addition to these sessions, a further opportunity to see what is involved will be given on Saturday 21 June at 10am, again to be held in the Brewhouse.

Anyone interested in becoming more involved at Osterley in this way will be made very welcome by Philip, so make a note in your diary and join him soon!

Many "Friends" are already volunteers, and find this a pleasant way of meeting people and learning more about the House and its history and contents. Any "Friends" - or their friends and relations - interested in becoming a volunteer can also contact Phillip on 020 8560 3918.

## COMMUNITY EDUCATION AT OSTERLEY

Claire Carlin, Community Education Officer at Osterley, kindly agreed to attend the "Friends" AGM on 21 May 2003 and speak to those present after the conclusion of business on her work at the House.

Claire distributed copies of the Primary Schools programme leaflet, which has been funded by the Friends, as an example of the work now being carried out. She explained that the programme Osterley currently offers, and that is being further expanded, has been developed after consultation with teachers and Volunteers at the House, and also by looking at services provided by Osterley's competitors – including Kew, Hampton Court and Syon.

Claire thanked the Friends for their support of the Education work, especially the children's Victorian costumes that are used with Primary School visitors. Whilst the Friends provided the monies for materials, Volunteers made up the costumes, for which Claire thanked them.

Claire informed us of some exciting projects that are being arranged for Secondary School pupils in the near future:

*Dance In Trust* with the Rambert Dance Company, involving pupils from Featherstone, Gumley and Cardinal Wiseman.

*Mathew Townsend* leading school workshops and performances with Longford Community School.

*Photography workshops* with Edmund Clarke for students from Hounslow Referral Unit and Cardinal Wiseman.

*Eco-Art Workshops for Osterley Day* with Alison Pullen, for "A" level Art Class students using recycled materials to make 3-D pieces, reflecting aspects of the Park.

Claire also told us about activities for children and their families, particularly in the Summer Holidays, including art and craft, storytelling, outdoor pursuits trails, pond dipping, House tours and Park Tracker packs.

Finally, there are a number of adult learning opportunities workshops in the Jersey Galleries: patch work, life drawing, block printing and watercolour classes.

Barry Williams, Property Manager, thanked Claire for her work, reminding members that Claire has been in post for less than a year. She has certainly achieved much in a short space of time!

Claire's talk was very enlightening, and it is good for the members of the "Friends" to hear more detail on how the money raised by them is put to good use.

