

Copied by Vision Print & Design
475 Staines Road
Bedford
LU14 8BL
Tel: 029 8384 1103

IAN

The Friends of Osterley Park
A Supporters Group for the National Trust

NEWSLETTER

Issue 47 December 2007

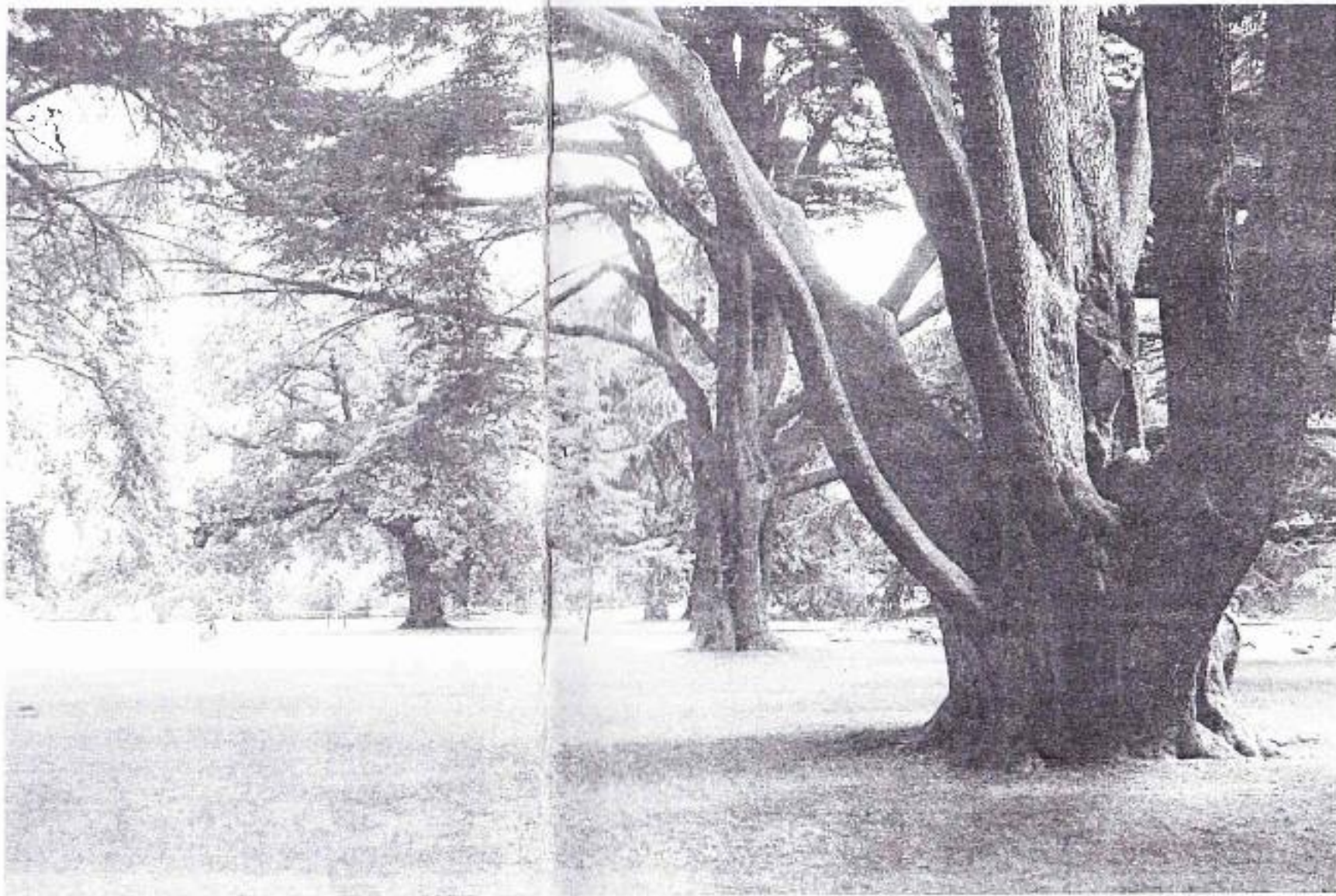


Photo and cover design
© Ian Gilroy

CHAIRMAN'S NOTES

The Committee have to advise you that Ian Coswather has not been well enough to take up his usual challenge of the Chairman's Notes for this Newsletter.

Ian was taken into hospital towards the end of September and has undergone surgery, from which he is slowly recovering. In addition to this, Audrey has also been in hospital, and we are glad to report that both of them are now at home and gaining strength all the time.

Ian and Audrey have both asked that their thanks be expressed through this Newsletter for all the visits and support they have received from members of the Friends.

It would seem a good opportunity to thank Ian for his hard work as Chairman over the past ten years and to thank Audrey for her full and loyal support to Ian in that work. We now realise that what Ian has been saying for the past two years (at least!) that more help is needed on the Committee to spread the workload is indeed true. The Committee is grateful for those members who have come forward to help in this recently: to Joan Mound, who has been co-opted onto the Committee and to Michelle Cooper, who has volunteered to help with the Newsletter production and to John Stacey who has produced the cover for this issue and will be doing so in the future. The Committee are delighted with his contribution, and we are sure that you cannot have helped but be impressed with the result! Thank you, John.

I am sure that you will all join with the Committee in wishing Ian and Audrey a very speedy recovery and a healthy and peaceful 2003.

OUR COVER PICTURE

We are sure that you have noticed the striking cover on this issue of the Newsletter. This beautiful photograph was taken by one of our Members – John Stacey. When the format of the Newsletter changed from A4 to A5, John saw the potential for the front cover, and approached the Committee with some suggestions, for which we are very grateful. John will be providing more photographs for future front covers, and is already planning a very special contribution for issue 50 during 2003.

John is also a Volunteer at the House, and has been for the last six or seven years. He can be found either stewarding in one of the rooms, or digging in the garden, helping the ladies who provide the flowers for the rooms in the House. You will be aware that financing the flower production is one of the ongoing projects of the Friends of Osterley Park, so it is good to see our Members being actively involved. John is also helping carry out a movement survey on the slabs in the main Hall of the House during the closed season.

John is a very creative person: in addition to his obvious talent in photography, he paints and writes poetry. He is a member of the Pitsinger Poets, and had poems displayed at Osterley as part of the "Poems in the Park" competition for its first three years. Maybe we will see some of his work within the pages of our future Newsletters! John's love in both painting and photography is landscapes, and his preferred medium in his painting is oils, applied with a palette knife.

The Committee would like to thank John for volunteering his services as photographer extraordinaire – any other talented members who could make this publication more vibrant, please step forward! We would love to hear from you.

100 CLUB - RON PIPER

The final account for the 100 Club for the year 2002 has now been prepared and I am pleased to report that the total income for subscriptions was £1872. In accordance with the rules of the Club, a total of £936 has been given as prizes and a similar sum will now be transferred to the "Friends" general account to be used to support the National Trust at Osterley.

This has been a most satisfying result and I would like to thank all the members who have continued to support the Club.

I would like to draw your attention to the announcements made elsewhere in this newsletter concerning the change of accounting year for the Club and also to the revised rules.

Renewal invitations are enclosed with this newsletter for those members who have share subscriptions due on 1st January 2003 and I shall look forward to receiving your cheques shortly.

If any "Friend" who is not a member of the 100 Club would like to join, please telephone me on (020) 8864 1692 and I will send you an application form.

Meanwhile, congratulations to the winners in the draws made at the Autumn Reception and the Volunteers' Christmas Reception as follows:

Autumn Reception:

First	£100	96	Ms M C Cooper
Second	£50	139	Mrs J Talbot
Third	£40	60	Mr D J Huffer
Fourth	£20	37	Mrs P Hercul
Fifth	£10	108	Mrs D Coleman

Christmas Draw:

First	£100	117	Mrs E M Bamber
Second	£60	115	Mr J H Furster
Third	£40	53	Mrs M Carr
Fourth	£25	39	Miss G M Cousins
Fifth	£15	86	Mr J James
Sixth	£6	121	Mr & Mrs J James

The first draw for 2003 will be held at the Winter Lecture on 19th March.

Finally may I wish all members the compliments of the season.

100 CLUB

To simplify the eligibility problems associated with a floating membership year for the 100 Club, it has been agreed at a recent Committee Meeting to change the membership year of the 100 Club to coincide with the Membership Year of the Friends.

This means that all memberships will become due on 1 April from 2004 onwards. In the interim period, amounts due on the expiry of current subscriptions will vary as listed below:

Renewal of 100 Club Membership due	Next Eligible Date of Owing Renewal	Amount Due 2002 (covers draws before 31 March 2004)	Amount Due (1 draw of year will be AGM)
1 January 2003	Winter Meeting	£15.00 on 1 January 2003	£12.00
1 April 2003	AGM	£12.00 on 1 April 2003	£12.00
1 July 2003	4th Open Reception	£9.00 on 1 July 2003	£12.00
1 October 2003	Volunteers' Christmas function	£6.00 on 1 October 2003	£12.00

Any Member wishing to join the 100 Club part way through the Membership year will be advised of the pro rata payment required.

If anyone is unsure how this change affects them, please contact Ron Piper in the first instance.

RULES OF "FRIENDS" 100 CLUB

1. The Club shall be run by the "Friends of Osterley Park" for the benefit of the National Trust at Osterley Park.
2. Membership of the Club is open only to paid-up members of the "Friends".
3. Members may join the Club at any time, but the full annual subscription of £12 per share is due at the same time as the Friends' Membership renewal at the end of March. Members who join the Club part way through the membership year will be asked to make a pro rata payment. Members may purchase as many shares as they wish. Each share will be allocated a number.
4. Draws will take place four times a year, at approximately three monthly intervals. Where possible, this will happen at a "Friends" event.
5. Half the income received in subscriptions will constitute the "Prize Fund". The total amount given in prizes in each draw will be approximately £1.50 times the number of shares in the draw, and may be rounded up or down to the nearest £10.
6. Winners not present at each draw will be sent a cheque by post. Winners names will be published in the "Friends" Newsletter, unless confidentiality has been requested.
7. Monies received for shares in the "100 Club" will be held by the "Friends" in a separate sub-account. The balance of the income received, not allocated to the Prize Fund, will be transferred at intervals to the "Friends" General Account, and used solely to support the National Trust at Osterley.

Revised November 2002

REPORT AND A REQUEST FROM CLARE
CARLIN, COMMUNITY EDUCATION OFFICER
AT OSTERLEY

Primary School Programme.

We have now managed to test five of the primary sessions and all of them have been very successful. We tested the "Victorian Garden Party Preparations" in the first week of December. The children from Kerem School in North London enjoyed the day immensely and looked quite the part in their wonderful uniforms. I would like to thank Farah Quereshi, all the education volunteers and Liz Ridout for helping to make these costumes.

Both the costume and the handling collections for the whole programme are coming together very nicely. We are having a Tudor dress made for a nine/ten year old girl which promises to be a great addition to our Tudor Stableyard session. We do still need a few items for the Victorian handling collection. If anyone knows where we might acquire these objects or has one lurking in their attic they would be much appreciated for our collection. They are a washing mangle, a Victorian style tea tray, a sugar cone, and a metal old-fashioned dustpan and brush.

Thank you for your help and support so far.

The "Friends" have supported this project by providing funds for the purchase of material for the making of skirts, aprons, caps and waistcoats for a class of primary girls and boys to wear plus the housekeeper's dress and objects for the Victorian handling collection.

Elizabethan and Victorian England are part of the National School Curriculum.

THIS NEWSLETTER.....

.....is, as you can see, much thinner than normal, and is also late in its distribution to you! It just goes to emphasise what was written in the very first article in this newsletter:

Ian Conacher, our Chairman, has been, to a very large extent, carrying the Friends of Osterley Park and its events and functions.

His recent bout of ill health has really highlighted this fact, and has certainly opened the eyes of the Committee. Although Ian is recovering well, he will no longer be able to do nearly as much as he has in the past.

If future Newsletters are to be fuller and more interesting than this issue,

your help is needed!

We are open to suggestions:

- perhaps you could tell members, through the pages of the Newsletter, about your memories of Osterley Park in times past
- maybe you have written a poem you would like others to read
- have you visited another National Trust property that you could write a short article on?
- is there a specific artefact within the House that you could write about?

Please think about it and, if you can contribute, please let us know.

Friends of Osterley Park

Winter Lectures 2003

The Annual Winter Lectures
have now been arranged as follows:

Wednesday 5 February

Andrea Cameron

The History of Isleworth

Wednesday 19 February

Mike Watts

Chelsea Physic Garden

Wednesday 5 March

Doris Sherwood

St Bartholomew's Priory and Hospital

Wednesday 19 March

Anne Partington-Omar

Ham House and Arcadia in London

Members should note that there is to be a new venue this year:

Ray Bowles Hall
St John's Centre
80 St John's Road
Isleworth TW7 6RU

Doors open at 7.30pm – lectures start at 8pm
Light refreshments will be served after the
lecture (cost included in the ticket price)

The cost per lecture will remain at £3.00, with
discounted tickets at £10.00 for all four.

To apply for tickets, please send a cheque
(made payable to "Friends of Osterley Park")
and a stamped addressed envelope for the
return of the tickets, to:

Mrs Joan Mound,
59 Whitby Road, Ruislip, Middx HA4 9DU