

The Friends of Osterley Park

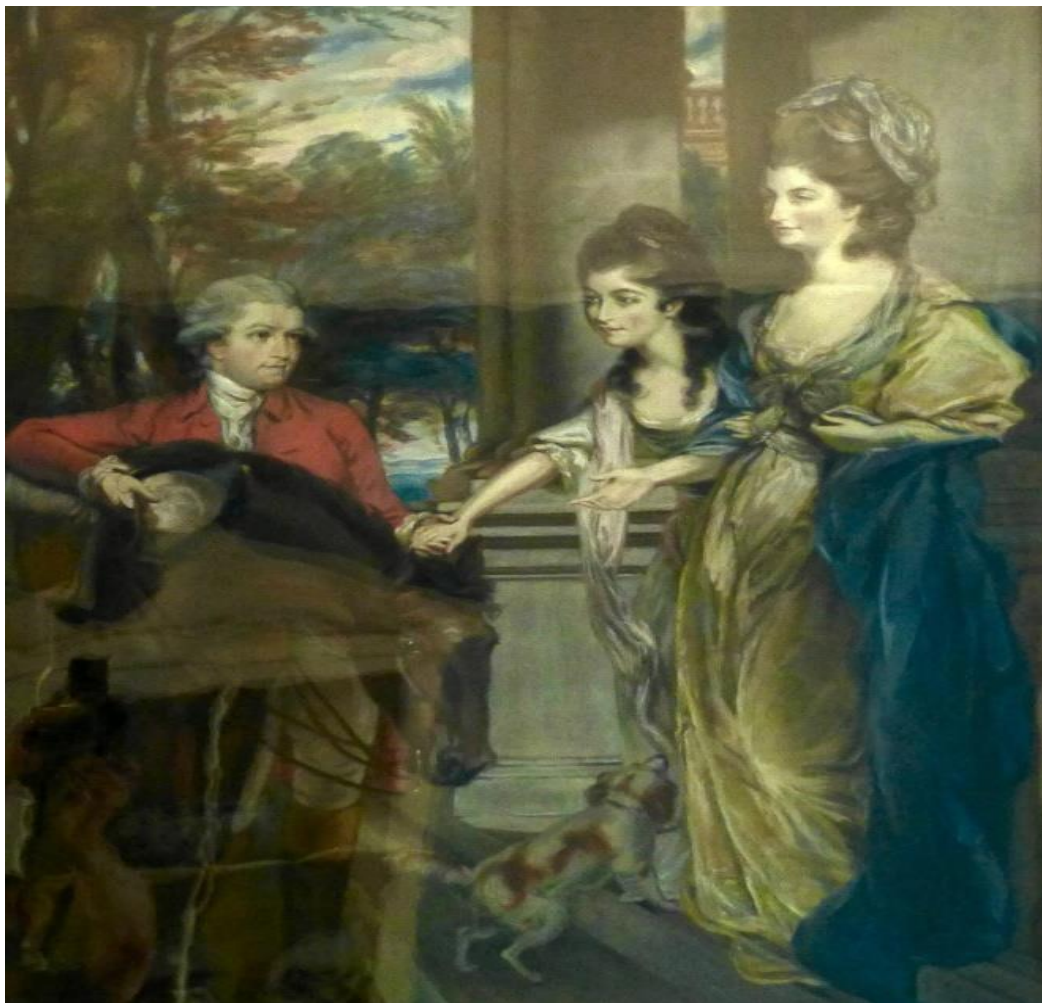


in support of **National
Trust**

NEWSLETTER

Issue 126
members)

Winter 2022 £1 (free to



The Child family, Robert, Sarah and Sarah Anne showing in 1781

Chairman's Report

John James

Dear Friends

After a very hot summer, autumn has arrived with the rain. It always surprises me how quickly the grass revives. Quite a lot of plants were lost with the heat we had, but Osterley gardens looked good again, well tended by Andy Eddy and his team.

The August holiday, once again organised by Douglas, took place in Lancaster, and we thank him for it. Douglas has planned the 2023 holiday which will be held in central Glasgow. Our coffee mornings are attended by a good number of people, but we would welcome back more of those who used to come before the pandemic. At our last coffee morning on 20th September we had an excellent presentation by Jenny, updating us on the renewable energy initiative. The heating pump will provide reliable and energy efficient heating to the House and stable block. The study base will have new heating installed this month which will be most welcome. The next two coffee mornings are on Monday 17th October and Tuesday 29th November.

Margaret continues to arrange interesting London visits. On 31st October the visit will be to Trinity House. There will be a visit to the Museum of London, which is closing in December for their move to Smithfield, so it will be a last chance to see it in its present location.

As the Brewhouse is no longer available for events, Peter Bush has arranged for a Christmas Lunch to be held at Grasshoppers Rugby Club, Syon Lane, which has a large car park. Grasshoppers have very kindly agreed to collect our members from Tesco and/or Osterley tube station. A form will be available to pick up at the next coffee morning for those interested. The facilities and food are excellent. The date is Tuesday, 13th December, cost £25 for the two course lunch (we have to pay the club in advance).

The last 100 club draw took place at the last coffee morning and the next one will take place at the Christmas Lunch. We would welcome more people joining.

I look forward to seeing you soon.

Best wishes John

News Susan Parsons

As the season changes so do many things at Osterley. We've said goodbye to Phil, our Lead Ranger, and Rosa, our Welcome Manager, and we wish them all the best in their new roles. We're currently recruiting for both jobs, as well as two part-time roles of Facilities assistant and Gardener. While we wait for those roles to be filled, we'll be working hard to keep operations running smoothly across site. We're delighted to welcome Jenny Woodcock to the Garden team as an apprentice gardener, and hope she'll enjoy developing her skills at Osterley.

We've had a busy summer of events at Osterley, with five outdoor theatre performances, and three cinema shows. We've also been running our Come Out and Play programme throughout the school holidays, encouraging families to get active together. ParkPlay, our new Saturday morning team games sessions, is growing well, and combined with ParkRun, Junior ParkRun, cycle hire and kayaking there's plenty of ways for people to get active at Osterley every weekend.

Looking forward, we're finalising plans for October half-term. We'll have a self-led family trail, encouraging families to explore the natural world to uncover the nature of 'the creature of Osterley wood'. We'll also have Halloween outdoor cinema for the first time, which will be a great opportunity to test this sort of activity at a different time of year. After that it will be full steam ahead with the Christmas preparations, including the return of the popular wreath workshops in December, and the conservation-inspired exhibition in the House.

At times when our capacity is stretched, all of the above wouldn't be possible without the passion and support of our staff, volunteers, and of course the Friends of Osterley, so I want to take this opportunity to thank you. We love this place and we want to share it, and we know you feel the same way.

100 Club

Douglas Craik

We had a draw at the coffee morning on 26th July and the winners were Peter Bush £50 and Sue Kendrick £100.

Both were at the coffee morning which through me into confusion as this has never happened to me before.

Our next draw was at the Autumn Reception on 20th September and the winners were Keith Rookledge £50 and Sheila McMichael £100

Normal business resumed as neither were there and I have posted their prizes to them.

The final draw this year will be at the Christmas Lunch on 13th December where I hope to see many cheery faces.

To join the £100 club send me a cheque for £15 (to cover Christmas draw and 4 draws in 2023) or add £12 to your membership renewal for 4 draws

The more subscriptions you have the better the chance of winning (honestly).

2023 Holiday: 26 July-1 August

Douglas Craik

£780 Single/£520 Twin or Double B&B

I had several suggestions on where to go (no laughing please), the largest number was for a return to Glasgow. The trip to Glasgow in 2015 was the first I organised and of the 7 days only one was actually in Glasgow, this time most days will be in Glaschu -the dear green place and the visits will concentrate on Glasgow's 3 best Architects, Robert Adam (and brothers), Alexander (Greek) Thomson, Charles Rennie Mackintosh.

Given the distance to travel I have again extended this holiday by one day to 7 days/6 nights. The price is higher than before for 3 reasons, Inflation, 7 days rather than 6, and better accommodation (3/4 of the cost is accommodation)

ACCOMMODATION

We will be staying in a Premier Inn just off George Square, the heart of Glasgow. The en-suite rooms have double or Twin bed room options. Continental breakfast is included and the Inn has a reasonable, dinner offer. However many restaurants are nearby mainly in the Merchant City and all at the same altitude as the Inn (no steep hills). This is better than the city Travelodge (but cheaper) and much better than University accommodation

PROGRAMME

This holiday is a bit earlier than usual to avoid the Edinburgh Festival when accommodation is extremely expensive across central Scotland

Wednesday 26/7

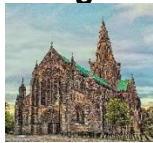
Travel to Glasgow (see end item) then a short guided walk (by me) around the city centre (depending on weather).

Thursday 27/7

We will take the open top bus tour of Glasgow from nearby George Square, this takes about 90 minutes. The bus stops at a host of Glasgow attractions and I suggest going all round the route then carrying on to where you would like to visit NB our tickets are for 2 days so you can do some today and some tomorrow.

Recommended places where the bus stops are:-

Glasgow Cathedral (stop 2, 5 mins from start) dates to the 13th century. This is mainland Scotland's only complete medieval cathedral - the most important ecclesiastical building of that era in the entire country. Unlike other cathedrals across Scotland, this one survived the



Reformation practically intact.



Adjacent is the City Necropolis, a beautiful and eerie place to visit. It is a solemn sight but still a very beautiful one. Greats like Alexander "Greek" Thomson, Bryce, Hamilton and Mackintosh have

been responsible for designing it. It is something like a garden cemetery and it is exactly their Victorian design that makes this place so well-known.

SECC/Science Centre (stop 11, 43mins). The SECC is a "boring" conference centre but just across the river (there is a foot bridge) is a fascinating centre of all things scientific (entry £10) with the option of ascending the 127 metre science tower (wind permitting) for a 360 degree view of Glasgow (£3.25 extra or £6 for tower only)



Riverside Museum (stop 12, 52 mins) the first purpose-built museum created in the 21st century. It houses the city's fabulous transport and technology collections, and reflects the important part Glasgow has played in the world through its contributions to heavy industries like ship building and engineering. It also has an old cobbled Glasgow street with shops dating from 1895 to the 1980s. (free entry).



University of Glasgow, Hunterian Museum, University Art Gallery and the Macintosh House (stop 14, 66 mins)

The Museum in the main University building was the first free museum in Scotland, founded in 1807 at the old University site in the High St it moved to the present building in 1870. Visiting the museum also allows a wander through the ancient looking public parts of the University- but it is a Victorian creation by Gilbert Scott,





though a few parts of the University are 17th Cent. and were moved from the old site. Across the road is the Hunterian Art gallery, a rather ugly building which houses many fine art works, particularly by Whistler and Mackintosh.



It also houses the Mackintosh House, this is a meticulous reassembly of the principal interiors from the Mackintoshes' Glasgow home at nearby 78 Southpark Avenue. Substantial alterations were made to this Victorian end-of-terrace house in 1906 by Mackintosh. The principal interiors were decorated in his distinctive style, remarkable then, and now, for the disciplined austerity of the furnishings and decoration. Museum and Art Gallery free entry, Mackintosh House £6

Kelvingrove Art Gallery & Museum (stop 16 72 mins)



The collections at Kelvingrove are extensive, wide-ranging and internationally significant. They include natural history, arms and armour, art from many art movements and periods of history and much more.



The most famous painting on display at Kelvingrove is the Salvador Dali masterpiece 'Christ of St John of the Cross' (it is on loan but is due back in early 2023).

Each weekday at 13:00 there is an organ recital in the main hall, you may wish to visit around this time. Free entry.

A couple of places a bit away from the bus route may be of interest

Glasgow Tenement House (stop 18, 80 mins)



from stop 18 (up a hill) is what at first glance, appears to be an ordinary middle-class tenement from the late 19th century, standing in Garnethill. However, when you step inside, the faithfully restored four rooms appear as if frozen in time and provide a rare glimpse

into life in Glasgow in the early 20th century. NT for Scotland, free entry for NT members.

Willow Tearooms (stop 20, 82 mins)



The original MacKintosh at the Willow Tea Rooms in Sauchiehall St. were initially opened by Miss Cranston and designed by Charles Rennie Mackintosh in 1903. You can now dine in the historic tearooms, visit the exhibition (£4.50) and browse the retail store. Booking strongly recommended (bit pricey but lovely).

Friday 28/7 As Thursday at your own pace and choice. The Open Top Bus leaves from George Square from 9:30 to 16:30

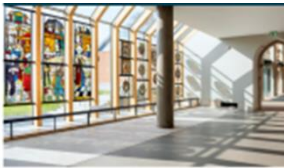
Or you may wish to do something completely different, e.g. the train to Edinburgh (50 min £14.20 off-peak return) is 10 min walk from the Inn.

Saturday 29/7 Holmwood and Burrell Collection or The Art Lovers House These 3 properties are a short coach trip from the Inn, crossing (or going under) the Clyde.

Holmwood is a family home and is masterfully designed but surprisingly cosy, with grand imagination behind it. Alexander 'Greek' Thomson designed the house for paper magnate James Couper and his wife in 1857–8, and it's widely regarded as this Scottish architect's finest



domestic creation. His stunning design legacy impresses at every turn. Thomson's penchant for Grecian styling and symmetry is found throughout Holmwood, where the bold opulent decoration echoes the colours seen in ancient Greek temples. Most of the internal decoration is recent but faithfully recreates the remnants of the original



About midday we will take a very short coach ride to the Burrell Collection. Sir William Burrell devoted more than 75 years of his life to amassing one of the world's greatest personal art collections, renowned for its quality of Chinese

art, exquisite stained glass and intricate tapestries, as well as its breadth of fine art.

We visited the collection in 2015 and there is not a major change since then so the alternative is to carry on to the House for an Art Lover (£6 entry). In 1901 Mackintosh, Glasgow's most famous architect, entered a competition to design an "Art Lovers House".



Mackintosh was lauded for his competition design but his entry was disqualified as he was late in submitting certain interior views of the house. For more than 80 years Mackintosh's concept remained a design on paper, until, in 1989 it was decided to finally build the House.

The drawings which Mackintosh produced were not intended as technical plans from which an actual house would be built and the task of interpreting and turning them into reality was the challenge which faced the architects. The coach will collect from the Burrell and Art Lover's to return to the Inn.

Sunday 30/7

A rather longer coach trip to Helensburgh to see Hill House this is considered to be Mackintosh's domestic masterpiece. Working to a commission from Glasgow book publisher Walter Blackie, up-and-coming architect Mackintosh and his wife Margaret created almost everything you see here, from the building itself to the furniture and textiles.



Unfortunately the materials and techniques at the cutting edge of architectural design in 1900 haven't withstood a century of the west of Scotland's harsh, wet weather conditions.

The external render of the property has not proved watertight and the walls have gradually become saturated and are crumbling, with water now threatening the interiors. A 10-year conservation programme allows continued public access to the house, but also offer views of the Hill House that have never been seen before, even by Mackintosh himself. A protective steel frame featuring walkways around and over the top of the house delivers a unique heritage visitor experience. .



We will next go to Loch Lomond Shores for photos, souvenirs and lunch then a 1 hour boat tour of the south of Loch Lomond.

We will go to Hill House along the north bank of the Clyde and return to Glasgow along side of Loch Lomond and over the soaring Erskine Bridge

Monday 31/7



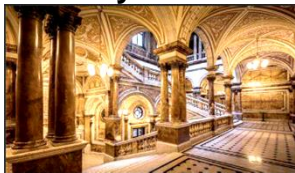
Today we see the "bookends" of Robert Adam's career. Starting with a short walk for a tour of the Trades House, the **last** design by Robert Adam in 1791, he died before it was completed and the work was finished by his brothers James and William. The façade of the Trades Hall is one of Adam's finest designs, originally comprising of a block of five bays with the emphasis on the central entrance way and outer bays. It is the only major Adam work surviving in Glasgow, and the oldest building (apart from the medieval cathedral) still used for its original purpose of a public hall.



We then take a coach to Dumfries House, saved by the intervention of the then Prince Charles, Duke of Rothesay in 2007. The exterior of the original house was by Robert Adam, his **first** domestic commission in 1754 but most of the interior was done by his brother

James. There is one ceiling by Robert but it is entirely different to what we would expect. There is an extensive collection of the furniture of Thomas Chippendale and leading 18th-century Scottish cabinet makers.

Tuesday 1/8



Before heading home we will have a tour of the nearby Glasgow City Chambers. Mosaics are found throughout the building, one of main draws for the city chambers is the marble staircase, made entirely from imported Italian

Carrara marble. It is the biggest of its kind in Western Europe, meaning it's one storey taller than the Vatican City staircase, the building also has more marble than the Vatican

TRAVEL There are two options for travelling to and from Glasgow.

1 Travel by Train. Meet at Euston at 11:00 and reach Glasgow at 16:00. Return Glasgow Central Station at 11:30 reach London at 16:00. (times to be confirmed)

2 Make your own arrangements. Holiday cost reduction £30 each way

Please let me know what you are doing, I may be able give advice.

You may choose to Fly, I suggest a flight about mid-day on Wednesday and returning on Tuesday early afternoon. You can take a Taxi to the City Centre Premier Inn, you may wish to Taxi-share, most companies have 6/7 seat passenger taxis. A much cheaper option that I use is the No. 500 Express Bus from the Airport Terminal (£14 return) to North Hanover Street then a 5 minutes walk to the Premier Inn.

Note entry fees etc quoted above are as at October 2022

You are very strongly recommended to have travel insurance.

Membership update

Keith Rookledge

Thank you all for your continuing support. Membership of the Friends stands at 209 just slightly down on last year. So far, we have only had one-person joining this year, so if you know anyone who might join, please do encourage them to do so. The necessary form it available on the web site

You will be aware that the dates of the newsletters have changed. The reason for this is to enable us to send out renewal letters nearer the date to those of you who do not have standing orders. It would be wonderful if you would consider using this facility as it would save the bank charge for depositing your cheque. Payment by Bank Transfer is equally good.

If you want a Standing Order form, you can download it from the web site where you can also find the application form for membership.

Organising next year's trips are well in hand as is next year's holiday and details are elsewhere in this Newsletter.

Christmas Lunch

Peter Bush

Osterley House is no longer doing Christmas Lunches so we have booked a meal at 12:30 on 13th December at the Grasshoppers club in Syon Lane. There is plenty of car parking but no convenient public transport. We will try to match up those with space to give a lift in their car with those who need a lift. In addition a minibus will pick from Osterley Park gates and Osterley Underground station at about 12:00.

2 courses main and either starter or desert, must be preordered £25 for payment see booking form from Douglas Craik.

Menu

Starters.

Roast butternut squash soup
Deep fried brie wedges and cranberry jelly

Main course

Roast turkey with traditional trimmings
Roast beef and yorkshire pudding
Aubergine gateau and provencal sauce

Deserts

Christmas pudding and brandy sauce
Baked vanilla cheesecake and raspberry compot.

Makers of Osterley - creative crafters on display.

Margaret Friday

The theme for the Winter exhibition this year is Makers of Osterley. At the time of writing, I have not seen a complete list of what will be displayed, so expect some lovely surprises in the Makers of Osterley exhibition. As we view the exhibits, we see that the Child family only employed the best designers available in the mid-eighteenth century. We see Robert Adam, Matthew Boulton, John Linnell, Georg Haupt and Christopher Fuhrlog, Joseph Rose, Thomas Moore, Gobelintapestry, Chinese lacquer and porcelain, so all of the best makers can be seen at Osterley.

It was Queen Charlotte who said the Royal family could not afford Robert Adam! This is the portrait of Robert Adam a copy of which you will see in the exhibition.

The Makers of Osterley display is in the Servants Hall, Jersey Galleries and Still Room.



Matthew Boulton is portrayed here at his house in Soho, Birmingham. The factory he constructed can be seen though the window.

Matthew Boulton originally inherited a metal toy and button making works from his father. He expanded it to include all things made in metal. He employed up to 1,000 makers and paid them well. They paid 1% of their income each month into a fund so they would receive pay if they were ill and could not work.

He provided all the

door furniture, including the marigold doorknobs and the fine lamps here at Osterley.

He was a member of the Lunar Society along with Josiah Wedgwood, Thomas Darwin and James Watt and others. They met on the night of a full moon to observe the skies.



He met James Watt in 1769 and by 1774 they had developed a steam engine which later led to the invention of a new form of transport – the train. The City of Birmingham published a new book to honour him in 2009 called *Matthew Boulton, selling what the world desires* taken from a comment Matthew Boulton made to James Boswell “I sell here, sir, what all the world desires – power.” How relevant that sounds today.

.Source: File:Matthew Boulton - Carl Frederik von Breda.



You will find a portrait of Sarah Child who helped her husband Robert decided to turn their Elizabethan mansion into a neo-classical villa using, through Robert Adam the best crafts makers to achieve this. The painting is by George Romney and is on-loan from the Earl of Jersey. It has been said that Sarah Child was the inspiration behind the look of the house as Robert simply paid for all the work. This is the portrait of Sarah Child usually on the Drawing Room wall but today we see her in the special exhibition as one of the Makers of Osterley.



Copies of Robert Adam drawings for Osterley show us that John Linnell made Adam designs to perfection.

The furniture is mostly made by John Linnell. Very conveniently for Robert Child who had purchased a 64-room mansion, 38 Berkeley Square in 1767. Linnell's workrooms and home were also in Berkeley Square and Davis Street. William Linnell, John's father founder of the furniture company, paid a £100 fine because his house, and workshop faced onto Berkeley Square. As Robert Adam commissioned Linnell to make the furniture for both Osterley and Berkeley Square, Robert Child was conveniently situated if he wished to view the progress of items ordered for his houses. Some of the fine examples on display include *the* roof finial remade by Linnell to match the others which decorated *the towers at Osterley*. It is here called a pineapple, but *some* feel it resembles the thyrus, the ivy clad stave carried by Bacchus, god

of wine, representing celebration as did the pineapple, so both are perfect symbols for a party house.

The interesting urn from the Eating Room shows the extent of Robert Adam's skill in providing everything that might be required. The top has a tap for water which could have had ice added for cool drinks. The lower section has a door which when opened reveals a chamber pot making it unnecessary for a gentleman to leave the room.

Traditionally after dining the ladies went to the Withdrawing Room where they drank tea, coffee or chocolate, played cards, embroidered, drew, sang or played instruments to amuse themselves. At Osterley the drawing room has been placed as far from the Eating Room as possible, at the end of the 130 foot or 40 metre, Long Gallery. Adam ensured the ladies would not be disturbed by the guffaws of the port drinking, cigar smoking men.

From the drawing room we have displayed two chairs made by John Linnell. One has been restored and the other is awaiting repair. Water gilding has been used by Linnell to enrich the chair as it can be burnished. Oil gilding cannot be brightened with burnishing.



These glowing chairs enhance the Drawing Room and were the height of fashion in the 1760's. Also from the Drawing Room is the Pak tong fender and fire irons. It looks like gold but you can light a fire in it. Pak tong, a mixture of copper,

nickel and zinc was invented by the caught trying to take it from Canton they were beheaded. Merchants knew the Chinese used large bronze coins at the time so made-up Pak tong to look like the small gold coins used throughout Europe. It would take a huge amount of small change to make the Osterley fireplace, fender and fire irons but merchants could charge what they liked for it as they had risked their lives to make it available to their most wealthy patrons. Matthew Boulton constructed these for Osterley. I have seen one other set in London in Spencer House but ours, designed by Robert Adam are much finer. Any visitors to Osterley would be impressed with the extreme riches of the Child banking family as they had a Pak tong fireplace in their Drawing Room.

The eighteenth century carpet seen here was made by Thomas Moore in London from a drawing by Robert Adam. It reflects the ceiling which is copied from the Temple to Bel in Palmyra. The Temple was destroyed in 2015 so Osterley has one of the few examples of this three dimensional ceiling remaining in the world.



Portrait of Georg Haupt by Elias Martin showing him with some of his work.

The library furniture has been called the best suite of library furniture ever made. Here we see a fine inlaid chair. These chairs were made by John Linnell when he employed Georg Haupt and Christopher Fuhrlog.

These Swedish craftsmen studied in Paris learning marquetry and ormolu but moved to London by 1767.

Their skill was making these exquisite inlaid designs in many colours of wood. Over the centuries the colours have faded but the skill of their craftsmanship is still obvious today.



Also to be seen in this picture is the Coin and Medal case made for Robert Child for his Berkeley Square house by Georg Haupt. Haupt returned to Sweden and became chief furniture maker to the King of Sweden who also required a coin and medal cabinet.

The one now on display in the Royal Palace in Stockholm is very similar to the one made for Robert Adam

For our next objects we return to Matthew Boulton. He constructed ormolu and blue john vases, candle holders and candelabra. One of his biggest clients was Queen Charlotte but we have a fine collection here at Osterley.



Marigold door furniture by Matthew Boulton before restoration. We cannot view Osterley without mentioning the Gobel Tapestry room. Again, the Child's have selected the best

maker. Today we see the fire screen and chimney board. These were ordered in 1772 from the Paris workshop. They arrived at Osterley in 1776 and are the only set in Britain still in the room for which they were made to measure! They were designed for Madame de Pompadour's brother and are called Loves of the Gods. Sets could not be ordered until after Madame died in 1764. So this is an early set. The brilliant colours are almost as new. The chimney board was said to have been made from a piece of tapestry taken from behind the mirror which can be seen here.



The embroidered pole screen from the Etruscan Dressing Room is Sarah Child's own work. She was a skilled embroideress making all the seats for the Breakfast Room furniture at one time She asked Robert Adam to make a design for a pole screen for her Etruscan Dressing Room and this very fine work is the result.

Some say she also did the embroidery for the State Bed but we have no evidence for that.

The Pole Screen you see in the exhibition was done by Sarah Anne and is in a rather simple hand. We believe this is an example of mother teaching daughter to embroider.

During the exhibition you can watch the restorers working on repairing the curtains. This is a real treat as we usually are not able to see conservators using their skills to restore such splendid works of art.



We hope the Makers of Osterley has inspired you to come and visit the house when it re-opens to enjoy all the exquisite craftsmanship on display in every room. The final part of the Winter Exhibition involves the restoration of the Drawing Room curtains and furniture. The largest Jersey gallery has become a textile studio for the restoration project. The curtains, though copies may have some original 18th century trimming.

LONDON VISITS

Margaret Friday

31st OCTOBER MONDAY TRINITY HOUSE. 2pm.

Located opposite the Tower of London. In charge of the coastline, shipping, lighthouses etc. since 1792.

Splendid building fully restored after the war. Our visit includes tea and biscuits. £20.

17th NOVEMBER. THURSDAY MUSEUM OF LONDON 2pm

Your last chance to see before it closes on 2nd December preceding the move to Smithfield's reopening as London museum in 2025.

Meet Margaret outside the main entrance. Margaret and Phil will show you round with emphasis on Tudor times (Thomas Gresham) The Great Fire (which didn't reach the Goldsmiths Blanchard & Child and the eighteenth century when London became a centre for music, art and fine buildings. Phil used to work for the archaeology department of the museum and actually found some of the stuff on display!

If anyone would like lunch first meet in the restaurant at 1pm. Look for Margaret.

Diary: Friends events and excursions

2022	London Walks	Coach Trips	Coffee Mornings
Mon 17 Oct	Jenny Louise Kirk -Life as a Queen's Maid		
Mon 31 Oct	Trinity house, Trinity square		
Thu 17 Nov	Museum of London		
Tue 29 Nov	Vida Radulovic Retail manager		
Tue 13 Dec	Christmas Lunch Grasshoppers		

Chairman

John James 020 8232 8683

john.james15@blueyonder.co.uk

Parkfield Cottage, Osterley
Road, Isleworth, TW7 4PF

Membership Secretary

Keith Rookledge

07768 596 681

2 West Avenue, Pinner, HA5
5BY

London Visits

Margaret Friday

020 8991 0593

margaretfriday@talktalk.net

Newsletter Editor

Sonia Sharma

editor.foop@gmail.com

Secretary

Patricia James

Treasurer & 100 Club

Douglas Craik 020 8977 6449

friendsofosterleypark@gmail.com

om118 Fairfax Road,
Teddington, TW11 9BS

Coach Trips

Vik Sharma

07876 498107

vik.sharma@yahoo.co.uk

50 Montrose Avenue,
Twickenham, TW2 6HB

Coffee Mornings

Peter Bush

prbush@virginmedia.com

Website Editor

Mike Doran

mikedoran47@outlook.com

Committee member

Susan Parsons

The Friends website gives you all of the current news, meetings, events, publications, and membership information relating to the work of the Friends of Osterley Park in supporting Osterley House and Park. www.e-voice.org.uk/friendsofosterleypark

Next newsletter To be published in Spring 2023. Any contributions to the Newsletter Editor (editor.foop@gmail.com) by **1 Feb 2023**. *The Editor may edit contributions as necessary.*

Issue	Published in	Contents
Spring	March	AGM papers, membership renewal, Coach Trips and London Visits in spring and early summer
Summer	June	Coach Trips and London Visits in late summer and early autumn
Autumn	September	Summer holiday details and booking form
December		