

# The Friends of Osterley Park

In  
support  
of the  
**National Trust**



## NEWSLETTER

Issue 110 Autumn 2018 £1 (free to members)



Francis Child 's large wine cooler

National Trust Collections 772361



What a summer we have had in London, and as I write we have a beautiful beginning to Autumn. The leaves are starting to change colour, but the warm weather allows further blooms in the gardens at Osterley Park.

The House and Park have had a busy summer with many activities and attractions. The property continues to draw filming for productions for cinema and television, the most recent shown being episodes of *Vanity Fair*, especially in the Stable Yard. Scenes were also completed in September for “*The Crown*”.

Outdoor activities continue to be successful and attract good numbers for runs, boating and cycling. A Summer of Sport programme was again planned for the school holidays.

In August there was excellent coverage on BBC News when Andy Eddy and Jeremy Dalton were interviewed, giving pre-recorded pieces to camera all about wildlife at Osterley, from standing under the Cork Oak, to talking about the Charolais cattle, and then some time in the Tudor Walled Garden.

When you read this newsletter Neil Cole will have taken part in the Royal Parks half marathon. He was raising funds to support conservation and redisplay of the Osterley silver collection. Let us hope he succeeded in raising a good sum.

A newcomer to the staff team is Nick Schwefel who has been appointed Cycle Hire Supervisor. He brings a wealth of experience in cycling.

Work has started in the renovation of the Garden House, with the aim to bring back the plant collection to its rightful place by Christmas.

The Hallowe'en Pumpkin Festival will be held from 20<sup>th</sup> to 28<sup>th</sup>

October. Plans are now confirmed for the big attraction this winter of the “*Made for the Table*” exhibition of contemporary and historic silver from the Goldsmiths’ Company’s collection. We will also be able to see pieces from Osterley’s rarely seen silver collection, together with modern glass, ceramics and textiles by leading UK artisans. The exhibition runs from November 5<sup>th</sup> 2018 to 24<sup>th</sup> February 2019.

Our coach trips have again proved popular. The first visit was in April to Highclere Castle, which was oversubscribed. This was followed by a trip to Buscot Park in May. In June there was a trip to two places, Baddesley Clinton and Packwood House. Henley and Stonor Park were visited in early July. On 18<sup>th</sup> September Scotney Castle was a very popular trip. The last trip will be on 16<sup>th</sup> October to Fort Nelson

and Portsmouth Museum. Many thanks to our Trips' Team, facilitated by Douglas Craik for all their hard work. They are still looking for someone to join the team – do talk to Douglas if you are interested.

Coffee mornings continue to be well supported. In April Margaret Friday gave us a fascinating talk on her holiday in Uzbekistan, and in May there was a talk by Gail Sanderson on the background to country house visiting. In mid June Margaret Friday introduced Part 2 of “Early Volunteering at Osterley”, with contributions from a number of Friends. In July Ffion George, House and Collections, gave us an introduction to the plans for the winter exhibition in conjunction with Goldsmiths. On 29<sup>th</sup> August, Ben Griffiths, Ranger, gave us an excellent presentation on wildlife at Osterley. With autumn approaching it was appropriate in September for us to have Andy Eddy, Head Gardener on “Before and Now” in the gardens at Osterley. This year the gardens have again been quite stunning, as he showed in his photographs.

Our Autumn Reception date had to change due to filming, but thankfully this did not deter a good number of Friends attending. Megan Tanner returned to Osterley where she had been a member of the team, before she moved on to become General Manager at Ham House with a portfolio of other properties. Her presentation focused on Women and Power, the National Trust Public Programme that has been at three properties in her portfolio, Ham House, the Red House and 2 Willow Road, Hampstead. It featured Ham's fascinating exhibition on “Elizabeth Murray, Duchess of Lauderdale – Duchess, Daughter, Socialite, Spy?” At the Red House the Pre-Raphaelite women were featured, Elizabeth Siddal, sisters Jenny and May Morris, and Jane Morris, wife of William Morris, and at 2 Willow Road female artists.

Margaret Friday again organised London Visits, this year in April to the Design Museum, May to Mercers Hall, June to the Chelsea Physic Garden, July to Forty Hall, September to Headstone Manor and October to Gunnersbury Manor.

Do consider coming to our Christmas Lunch in the Brewhouse on Friday 14<sup>th</sup> December – those who attended last year greatly enjoyed it. Finally, at the Volunteers' Summer Social 2018 long service awards were announced, including these for the following members of the Friends:

5 year award – Andree Brown and Ian Brown

15 year award – Anna Harris, Pat Herod and Phyllis Daniel

25 year award – Peter Bush

Many congratulations to them all.

---

## from the 100 club

## Douglas Craik

At the Autumn Reception draw the lucky winners were:- Elisabeth Bamber £25, Jan Ryan £50, and Margaret Friday £100 All members of the Friends can purchase one or more “shares” in the 100 Club from me.

# GOLDSMITHS' COMPANY MADE FOR THE TABLE

Margaret Friday

For our full-colour newsletter this autumn we are featuring some of the fine silver items at Osterley to be displayed in conjunction with the Goldsmiths' exhibition MADE FOR THE TABLE which opens on 5th November and closes on 24th February. Osterley's links to the Goldsmiths' Company go back to Francis Child who arrived in London in 1656, aged 14 to be apprenticed to goldsmith William Wheeler who was also in-charge of the Royal Mint. Having served out his 8 year apprenticeship he married Wheeler's daughter Elizabeth in 1671. Wheeler then died but his widow Margaret married Robert Blanchard, another goldsmith. Blanchard and Child became partners and their goldsmith's business was at the sign of the Marigold in Fleet Street. When Blanchard died in 1681 Child inherited two goldsmiths' fortunes through his wife Elizabeth. He had a growing family in total 12 sons and 3 daughters. Child was knighted in 1689 and served as King's Jeweller to King William III until 1697. In 1698 he was elected Lord Mayor of London. He was also Director of the East India Company and a Whig MP for the City of London.

The bank was started when he and Blanchard began to accept running cashes from merchants. After Blanchard's demise in 1681 Child became Child's Bank at the sign of the marigold, one of the first in England. Charles Dickens calls it Telson's Bank in A Tale of Two Cities.

Our cover picture is of Francis Child's large wine cooler- the 2nd largest in England to survive from the 17th century. The Duke of Northumberland has the largest. In Robert Child's day it resided under the sideboard in the Eating Room as recorded in Agneta York's letter to a friend in 1772 "the Eating room...is a very large room, the ornaments are of stucco, white, upon different grounds, Pantheon fashion. The sideboard was magnificently furnished with plate, and under the table was a Massy & large silver Cistern". It was also recorded in the 1782 inventory.

For the exhibition the Osterley silver shown has been selected with the theme MADE FOR THE SIDEBOARD. It will be displayed in a modern glass case in the Eating Room along with this selection of glass and silver pieces.



Next we see a silver gilt sideboard dish by Paul de Lamerie, top silversmith, made in 1736 and bearing the Child and Wheeler coats of arms commemorating the marriage of Francis Child and Elizabeth Wheeler in 1671. It is decorated with shell and foliage motifs. This dish appears in the 1782 inventory as a "large gilt salver for the sideboard"

The very fine silver tray presented to Francis Child by the Jewish Merchants of the City when he became Lord Mayor in 1698 can also be seen. It would have been covered with fine sweetmeats which would be offered to those

attending Francis Child on the day he became Lord Mayor. It is made by John Ruslen and decorated in full baroque style with the motto The arms of the Tribe of Judah given them by the Lord.

This is the tray which features in our centre view.



Complementing the candlesticks made by Angus Mcfadyen in 2017 we are showing those made in 1761 by William Cafe and engraved with the Child family crest for use on the dining tables in the Eating Room. Candelabra were used on the side tables only as they would have prevented the footmen from placing and removing dishes from the tables. These too appear in the 1782 inventory.



Robert Child also had 12 silver dinner plates originally made in 1740 by George Hindmarsh with the Child family crest adjusted to include his wife Sarah Jodrell's coat of arms.

A glass and silver jug and goblets next feature, these were made in 1867 - the year Sarah Sophia, Lady Jersey died so made either for her or her grandson the 7th Earl of Jersey. The Goldsmiths have included some fine modern glass and silver too.



Next we see a piece from 1907 by The Goldsmiths' Company but in the Osterley collection is a punch bowl, also known as a montieith. Although made in the 20th century it is similar in style to those of the 18th century and goes to prove the importance of the punch bowl in fine dining over the centuries.

Ceramic pieces include the fine porcelain dinner service made for Francis Child II in Kangxi in 1720. It bears the Child family crest in red, green, sepia and gold in the centre of the plate with the deep powder blue borders only found on the finest porcelain made for the emperor of China. This was only used on the most important occasions - but it was prominently displayed as an expression of supreme taste and wealth.



In the same design, but made in Staffordshire by Miles Mason in the early 19th century we have an Armorial wine cooler with the Child family insignia from a set of additional pieces to complement the 1720 service. This is just the sort of thing Sarah Sophia, Lady Jersey would have desired inspired by silver punchbowls.

The final punchbowl is Japanese Imari style with the design Three Friends in Winter. It is painted in cobalt blue with bright



enamels and gold and made between 1695 and 1720 so a splendid example of an item designed to impress visitors and remind them that Francis, Robert and Francis II are Directors of the East India Company.



Next we have a dessert plate from the Meissen factory and made around 1735. The painting is by a German artist trying to portray scenes in China. It was probably purchased by Thomas Villiers when he was ambassador in Dresden. The Jersey's used the set sparingly as the figures appear to be Chinese but the buildings and scenery are North European and often inspired laughter

from their guests. It is a fine example of early European porcelain.

Two Wedgwood Basalt ewers for water and wine, and usually on the mantle shelf in the Eating Room show Neptune, god of the sea, and Bacchus, god of wine.



Our show of Osterley pieces concludes with a Sevres porcelain basin and ewer made in 1770 and used at the table to rinse hands

at the start or during a meal - we can see Robert and Sarah using these blue celeste pieces entwined with symbols of love and flowers. Perfect for displaying refinement in the best possible taste.



The Goldsmiths past and modern silver pieces will be displayed in the Entrance Hall in glass cases.

Their fine ebonised table set with pieces made by the craftspeople who are working in the Breakfast Room and in the Servants Hall can be viewed in the Breakfast Room.

The following artists who will be making and selling everything from cutlery, bowls, beakers, vases and candlesticks in silver, glass, wood and textiles.

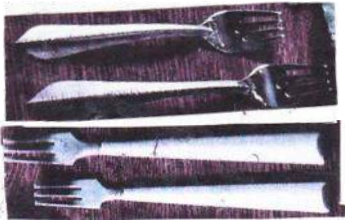
Ceramicists including Jill Shaddock - her plates will feature in the table display in the Breakfast Room and Vezzini & Chen who make the fine wine glasses that can be seen in the Breakfast Room as well as glass display vases.

Other glassware comes from Scott Benefield who makes glassware with thin white stripes or patterns including jugs, cruets and containers.

The Servants Hall will have a shop but will also be used during the exhibition by crafts people showing exactly how they make pieces using traditional methods. The schedule for these demonstrations will be as follows: The artistes will be in the Servants Hall from 11am-4pm.



17-18th November Adi Toch. (Silver chased and polished silver salt and pepper bowls)



1st-2nd December Rebecca de Quinn. (Cutlery - triangular effect pieces)

16th December Angela Cork. Cutlery and Christmas cards with silver decorations.

28th December - Silversmith in Residence Angela Cork - see what she has in mind for the New Year.

Woodwork has been made by Grain and Knot and they have used various woods from Osterley to make a range of spoons.

Hampson Woods have created a range of chopping boards made from London Plane trees.

Lastly the textiles are by Kiran Ravilious including napkins and tea towels inspired by leaves and plants in nature. Thornback and Peel have made tea towels and kitchen textiles using a Georgian jelly pattern.

Tours of the exhibition Made for The Table will be led by the Goldsmiths' assistant curator Georgia Powell on 21st November from 12 - 1pm.

On 28th November she will meet silversmiths Adi Toch and Rebecca de Quinn in the Brewhouse, they will be in conversation from 1 - 2.30pm. There is a charge of £10 for this session and numbers are limited - so make sure you book early. Finally on 21st December Georgia will be taking another walk and talk tour from 12 - 1pm but again numbers are limited to just 15.

I have attempted to show pictures of pieces from Osterley and from the Goldsmiths' Exhibition showing current silversmiths. Remember the Goldsmiths' Company is one of the few which still trains apprentices and it is a privilege to be able to see them demonstrating their skills here at Osterley - and to purchase some of the beautiful things being created for the table today. Come and enjoy the exhibition and find that perfect present!

Better still - volunteer to help out at the exhibition or the shop in the Servant's Hall so you can meet the artists and have a special view of the skills on display and in action. Contact the Osterley volunteering team on 020 8232 5065 Email [Osterley.volunteering@nationaltrust.org.uk](mailto:Osterley.volunteering@nationaltrust.org.uk)

### **What's involved?**

Welcoming every visitor and acting as their host for the Exhibition.

Learning more about Osterley's silver and ceramics collection, so you can share all that's special about this unique display.

Helping visitors to discover more about this winter offer highlighting the connected events programme we are running. Helping visitors understand why we need to take care of special places.

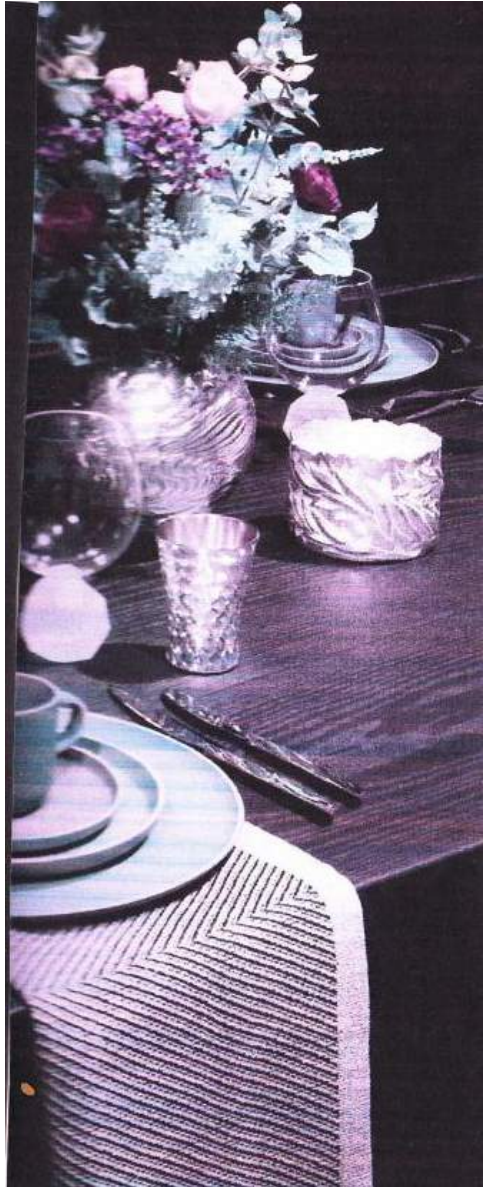
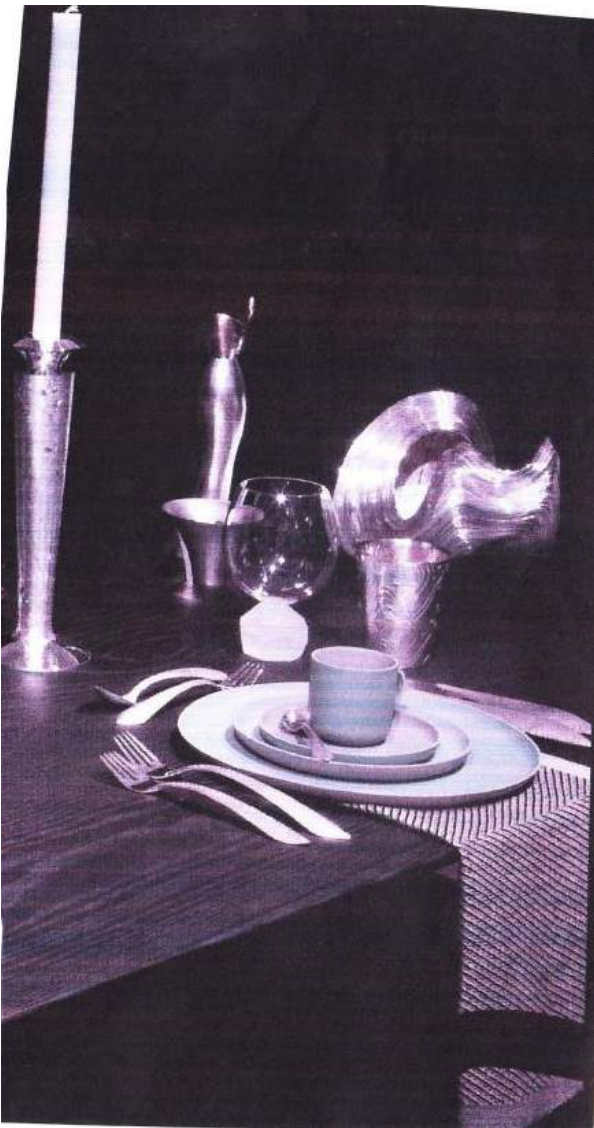
Keeping a watchful eye on the display and ensuring that visitors do not touch the items. If needs be, raising any concerns you have with staff.

You will be important in making sure things run as smoothly and safely as possible – this includes getting to know health and safety and evacuation procedures.



Silver tray presented to Francis Child by  
the Jewish Merchants of the City 1698  
National Trust Collections 772350





Items from the Goldsmiths display

# Coming events



## Christmas Lunch

**13:00 (1pm) on Friday 14th December**  
**in the Brewhouse** Note doors open at 12:30 and not before.

**Booking MUST be by 9th November, the Houses cut-off date** (phone/email me if cheque is just posted on this date) Booking form is enclosed.

Make cheques payable to "Friends of Osterley Park"

Talking about Christmas, if you have friend who plays golf why not buy them a golf club?

The 258 acre, 18 Hole, par 72, Dundonald Links course is for sale by Savills (offers invited) don't let it be Trumped.



## COFFEE MORNINGS BREW HOUSE

**10:30 FOR 11:00 UNTIL 12:00ish**

**Members of Friends £4, others £5**

**£2.50 pays for Coffee and biscuits**



Our monthly programme of coffee morning talks continues, all are welcome and it is a chance to catch up on the latest news from other Friends & staff.

**Tuesday 13th November** Lyndsey Feeney Visitor Experience

**Monday 10th December** Christine Diwell "Villages that make up the Borough of Hounslow"

**Tuesday January 15th** Neil Cole General Manager

## 2019 Programme

About half of our talks are updates on the property from members of staff and the others on subjects that will hopefully be of interest.

We have 6 members as speakers for 2019, If you are willing to do a 30-45 minute talk on any relevant subject in 2020 please tell John James

### Email booking of trips

We offer the option of booking Coach trips or London Visits by email and / or payment online

email [friendsofosterleypark@gmail.com](mailto:friendsofosterleypark@gmail.com) with the names of trippers, name of trip and amount being paid and **where you want to be picked up**,

Make a bank transfer to

Name of Payee

Sort code

Account number

Your Reference

**Friends of Osterley**

**20 02 06**

**70389315**

**Trips/your name**

## 2018 Friends Summer Holiday

Douglas Craik

Well, we survived the 2018 Liverpool holiday, going up with 45 people and returning with 43 (but that was planned).

No-one was lost for more than a few minutes, most journeys started (more or less) on time and only one property changed what it had offered us. Weather was OK, not too hot and only wet one evening when we went to dinner - then it was torrential!

Many thanks to Sandra Hunkin for her assistance throughout the trip. Lastly thanks to those who signed the group thank-you card and/or sent their own ones to me. Greatly appreciated- now on to Aberdeen. Suggestions for 2020 welcome, I am initially thinking about Newcastle

## 2019 Friends Summer Holiday

Douglas Craik

### Aberdeen - Thursday 18th- Wednesday 24th July 2019 Bed and Breakfast

**Single £525 Double/Twin £400 Deposit £100 by 1st January**

The deposit reflects train ticket price. If you cancel after 1/1/19 the deposit will be only refunded if you are replaced by a late booker.

This holiday is a bit earlier than usual as it means we can visit Balmoral Castle (it is reserved for another resident from 1st August).



The other change this year is that we will be staying in a Travelodge in the centre of the city and is based on Bed & Breakfast (see "Food" section at end). The current plan (which on past experience WILL change as time goes by) is as follows

### Thursday 18th Travel



We meet at Kings Cross station at 9:30 and travel non-stop to York, our train then stops twice until Berwick at 13:40. We now enter Scotland with the next stop Edinburgh at 14:40 then a more leisurely journey crossing the famous Forth and Tay rail

bridges and to arrive in Aberdeen at 17:04. We will have a short coach trip to the Travelodge at the west end of Union St.

**SEE FLIGHT OPTION AT END OF ARTICLE**

### Friday 19th Aberdeen



Aberdeen is too small a city (pop. 230,000) to have open top buses but our coach will take us round the city with stops at the beach for a paddle and in Old Aberdeen for a half hour stroll through the ancient part of Aberdeen. We then continue our coach tour ending up at the Aberdeen Art Gallery and Museum.



After a break there will be the option of a 90min private guided tour of His Majesty's Theatre (max 20 people), depends on there being no matinee. This involves a lot of stairs. More relaxed options include a stroll through the adjacent Union Terrace gardens, visit the Maritime Museum, wander round

the harbour or even shop in the mile-long Union Street (the core of the city). For the very fit a visit to the Tollbooth Museum with near vertical spiral stairs is very informative. The Travelodge is about a mile away at the opposite end of Union St but many buses run this route to nearby bus stops (English Freedom Passes etc don't work in Scotland)

### **Saturday 20th Northward ho**



Today we travel to the north east coast and Fraserburgh to visit the Scottish Lighthouse Museum or the Fraserburgh Heritage Centre. Small groups will get a conducted tour of the unique lighthouse, built into a 16th Century castle!. This requires quite a bit of climbing, the optional final part is a ladder.

The less strenuous option is a guided tour of the adjacent and surprisingly interesting Heritage Museum. There is a lighthouse café open to all.



Then along the coast to Duff House, an Adam designed building, not our Robert but his father William and brothers John and James. This very grand early Georgian manor with 18th Century furniture has many paintings from the National Galleries of Scotland. There is a lift to every level and a reasonable café for lunch.

### **Sunday 21st Castle Day**



Grampian Region has over 300 castles and Tower Houses, 17 open to the public, the National Trust for Scotland has 5 but we will just do two that are close together. First, we go to Crathes castle, a "modern" Tower House dating

from the 16th century with additions over the next 3 centuries. This is free flow but it will be best to split into smaller groups. There is a very attractive walled garden to visit. Crathes has one of the larger NTS cafes so we can lunch here. Next, we will take a 30 minute train journey on the nearby steam powered Royal Deeside Railway, we may have our own private coach. This is the route Queen Victoria and her



successors took to Balmoral.

Our second castle is Drum. The original tower dates from the 13<sup>th</sup> century. It was presented to the Irvine family in 1323 by Robert the Bruce (what do **you** expect as a

Christmas present) but greatly extended in later centuries. This is a conducted tour so we will be split into 2 or 3 groups with a staggered start. There is the opportunity for an individual visit to the ancient tower but it is a very challenging climb, only for the fit and brave.

### Monday 22nd North again

Today we will first visit Haddo House again by William Adam but in the more familiar Palladian style with Victorian additions. The interior was remodelled in



Victorian times; what look like Robert Adam ceilings are 19<sup>th</sup> century copies. This is by guided tour so we will divide into groups, the gardens and café could fill in your waiting time and this is the better location for lunch. NTS Grampian properties are much quieter than



we are used to, Haddo, which is bigger than Osterley, has about 30-40 visitors on a week-day. Next the nearby Pitmeddon gardens, originally laid out in 1675 and recreated by the Trust in the 1950s. There is a small café and museum of 19<sup>th</sup> and early 20<sup>th</sup> century Farming Life.

### Tuesday 23rd Royal Day



We start a little earlier at 9:00 and go to Balmoral Castle, Scottish home of the **Royal** Family where we can tour (with audio-guide) the grounds, exhibitions and the Ballroom and of course the café (for lunch). There are a couple of short films in the stable yard that



give a good introduction to this Royal retreat. Next, we will visit the nearby Crathie Church regularly attended by the current **Royal** family. We will have a half-hour talk about the history of the church from a man and his dog.



We will end the day with a trip to the nearby **Royal** Lochnagar Distillery for a tour of the establishment and a tasting tippie. We will again be divided into 3 groups but the tours overlap so the last will end an hour after the first starts.

Try to stay awake on the 90 minute return journey.

## Wednesday 24th Homeward bound!

Leave the Travelodge at 9:15 for a short coach trip to the station for our journey back to Kings Cross arriving at 16:50

### ACCOMMODATION

The Travelodge is at the west end of Union St, the main street of Aberdeen and centre of the city.

The rooms are ensuite with a generous double bed, so very spacious for one and cheaper for two together. There are also a few twin rooms for those willing to share a room but not a bed. Extra nights at the end can be arranged. All floors are served by lifts.

### FOOD

The holiday price includes a continental breakfast, with a paid option of a cooked breakfast. The Travelodge offers a £12 two course dinner but although convenient it is not of a great quality (understatement).

There is a Wetherspoons Pub with an entrance about 100 yards from the Travelodge. Whilst not haute cuisine this offers a much wider range of food, of better quality, at much the same cost (or less).

I have arranged for an area of the Pub to be set aside for us all on Thursday night from 6:00 to 8:00, it is partly separated from the main area and we will probably be finished before it gets busy.

You can choose and purchase your own meal (and drink).

Each subsequent morning I will check how many want to use the Wetherspoons that evening, again an area will be set aside for us.

There are numerous other restaurants around the city centre, in particular the Union Centre next to the station has 20 eating places open till 23:00. Buses go from near the Travelodge to near the station.

### TRAVEL

The train fares vary greatly with no apparent reason, I have used the highest likely cost and if I can book cheaper then your final cost will be reduced.

If you don't fancy the long train journey then **you** could book a flight up and/or down. Currently flights from Heathrow with cabin luggage only include British Airways for £80-£100 each way and Flybe north on Thursday at 09:45 (£41) and south on Wednesday at 15:15 (£59).

If you do this then your holiday cost will be reduced by £100 (train cost). I strongly recommend you book any flights as soon as possible as costs **will** rise. Just let me know what you are doing. I looked at group booking but bizarrely this is far dearer than individual booking.

**BOOKING FORM** is attached, please send to me by Hogmanay (1/1/19). If more than 49 apply then there will be a waiting list. Later bookings will be taken if space but may cost more for the train journey.

## Diary: Friends Events and Excursions

Tue 13 <sup>th</sup> Nov	<b>Coffee Morning:</b> Lyndsey Feeney Visitor Experience
Mon 10 <sup>th</sup> Dec	<b>Coffee Morning:</b> Christine Diwell "Villages that make up the Borough of Hounslow" 100 Club draw
Fri 14 <sup>th</sup> Dec	<b>Christmas Lunch 12:30 for 13:00</b>
Tue 15 <sup>th</sup> Jan 2019	<b>Coffee Morning:</b> Neil Cole, General Manager
Tue 12 <sup>th</sup> Feb	<b>Coffee Morning:</b> Peter Bush, The Stones of Osterley
Wed 6 <sup>th</sup> Mar	<b>Coffee Morning:</b> Lyndsey Feeney -Marketing
Fri 5 <sup>th</sup> April	<b>Coffee Morning:</b> Douglas Craik, Friends' Donations
Tue April 9 <sup>th</sup>	<b>Coach Trip:</b> West Horsley Place & Hatchlands
April	<b>London Visit:</b> Charterhouse
Wed 8 <sup>th</sup> May	<b>AGM</b> 4:30 for 5:00 TBC
Tue 14 <sup>th</sup> May	<b>Coach Trip:</b> Upton Park & Broughton Castle
May	<b>London Visit:</b> Pitzhanger Manor
Wed 22 <sup>nd</sup> May	<b>Coffee Morning:</b> Staff speaker Ffion George -House
Mon 17 <sup>th</sup> June	<b>Coffee Morning:</b> TBA
Wed 26 <sup>th</sup> June	<b>Coach Trip:</b> Coughton Court
June	<b>London Visit:</b> TBA
Mon 15 <sup>th</sup> July	<b>Coffee Morning:</b> Ed Hewison Outdoor Activities TBC
Thu 18 <sup>th</sup> -24 <sup>th</sup> July	<b>Holiday</b> Aberdeen
<b>NO JULY COACH TRIP OR LONDON VISIT DUE TO HOLIDAY</b>	
Aug	<b>Coach Trip:</b> TBA
Aug	<b>London Visit:</b> TBA
Wed 28 <sup>th</sup> Aug	<b>Coffee Morning:</b> TBA

**Coach Trips** depart from Lakeside Car park and Bus Stop opposite Osterley Station at 09:30 or time indicated above

**Coffee Mornings** 10:30 for 11:00 in the Brewhouse.

<b>Issue</b>	<b>Published 14th of</b>	<b>Contents</b>
Winter	January	Membership renewal first 2 coach trips First 2 London Visits
Spring	April	AGM papers, membership cards, next coach trips, next London Visits
Summer	July	next coach trips, next London Visits
Autumn	October	next summer holiday booking

### **Chairman**

John James 020 8232 8683

John.james15@blueyonder.co.uk

Parkfield Cottage, Osterley Road,  
Isleworth, TW7 4PF

### **Membership Secretary**

Keith Rookledge 020 8866 7017

2 West Avenue, Pinner, HA5 5BY

### **Treasurer / 100 club / Coach trip/ Newsletter**

Douglas Craik 020 8977 6449

friendsofosterleypark@gmail.com

118 Fairfax Road, Teddington, TW11 9BS

### **London Visits**

Margaret Friday 020 8991 0593

Margaretfriday@talktalk.net

The **'Friends' website** gives you all the current news, meetings, events, publications, and membership information relating to the work of the Friends of Osterley Park in supporting Osterley House and Park.

[www.e-voice.org.uk/friendsofosterleypark](http://www.e-voice.org.uk/friendsofosterleypark)

If you experience any problems in using our website, or have any suggestions for its improvement, please email **Mike Doran** at mikedoran47@outlook.com

## **Next newsletter**

to be published 14 January 2019.

Any contributions to the Editor by

**30th December 2018.**

The Editor may edit contributions if necessary.