



Loxley Cemetery

Verity Brack

Secretary, Friends of Loxley Cemetery

loxley.secretary@yahoo.com

Location of cemetery



- Accessible from both Loxley Road and Long Lane
- Surrounds Loxley Chapel on all sides
- Approx 10 acres in total
- Around 4500 burial plots
- Chapel is Grade II* listed but now is roofless ruin
- Open to all

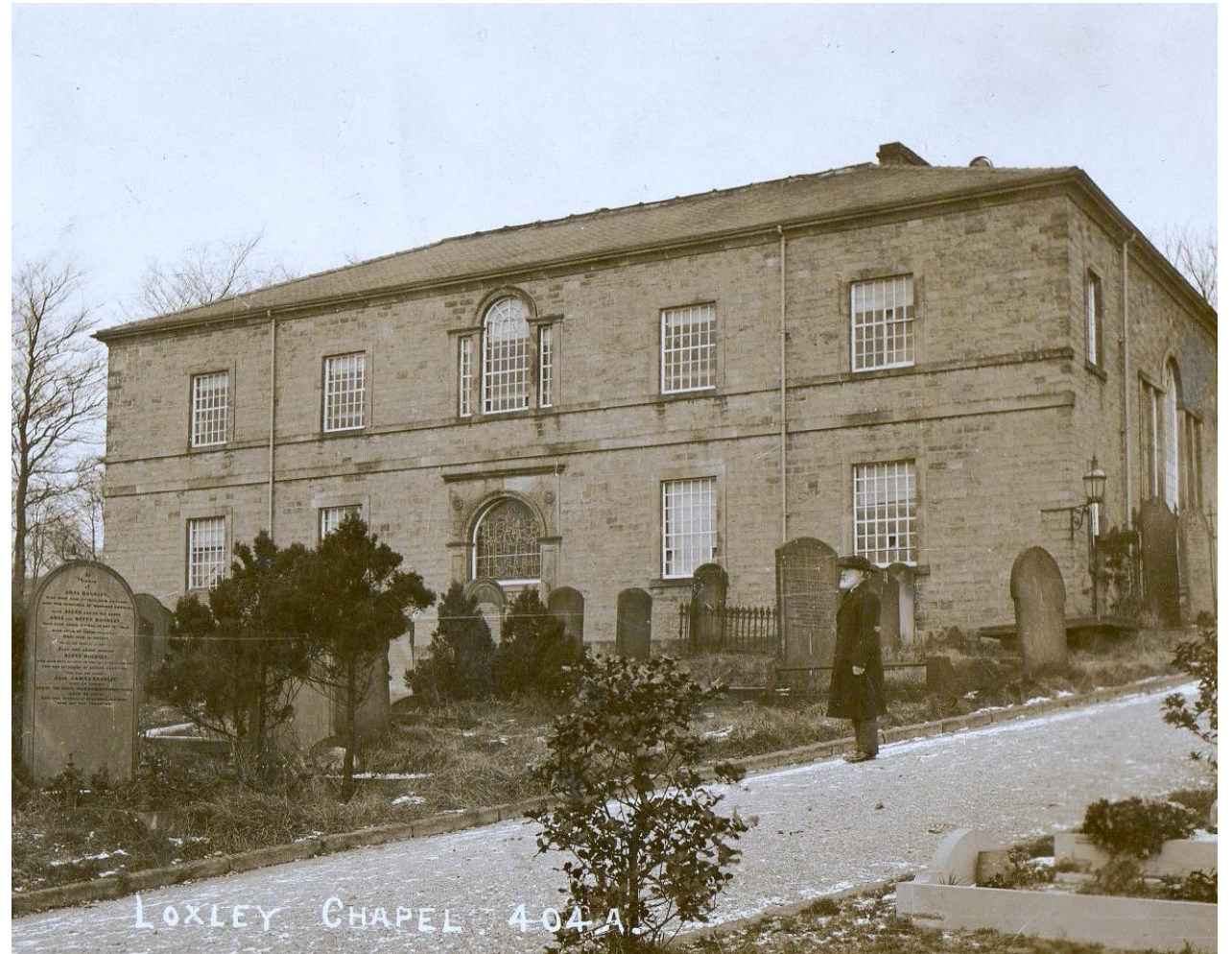
Origins

- Built 1787 at cost of £1,000 by some of the worshippers at the Church of St Nicholas, High Bradfield
- 1798: rented to Protestant Dissenters who bought the chapel in 1821. Became Loxley Independent Church
- Eventually became Loxley United Reformed Church



Origins

- 1806: first recorded burial, Elias Crapper, age 30, of Stannington
- Over 5,000 burials recorded
- Chapel closed 1992
- Sold to private developer
- Now with 2nd private developer
- Burials still taking place



Days gone

- Important part of local society
- Popular place of worship
 - 1851 Religious Census reports afternoon congregations of 200
- 1855: new school room and minister's house added
- Graves of many local mill owning families e.g. Kenyons, Dentons, Swifts



Since closure

– neglected, vandalised, and finally destroyed by fire in 2016



The Graves

Graves of interest include:

- At least 22 victims of the Great Sheffield Flood of 1864 from the Armitage, Hudson, Bates, Chapman and Denton families
- Commonwealth War Graves from 1st and 2nd World Wars
- Parents of Henry Tingle Wilde, first officer on the Titanic
- Parents of Frederick Skelton drowned in the sinking of the Lusitania 1915



Friends of Loxley Cemetery

Formed in October 2019 to:

1. *Maintain the physical upkeep of Loxley Cemetery*
2. *Maintain the cemetery in keeping with the environment of the Loxley Valley*
3. *Create and maintain historic records connected to the Cemetery*
4. *Work with the owner to restore Loxley Church and preserve the memorials*

Current officers:

Chairman: Mike Ford

Treasurer: Linda Brownlow, loxleytreasurer1@gmail.com

Secretary: Verity Brack, loxley.secretary@yahoo.com



FoLC

- Membership £5 annually
- 3 newsletters per year
- Find A Grave service
- Volunteer work sessions (covered by insurance)
- Encourage local residents to visit and volunteer
- Connect with similar groups locally and nationally



So far...

- Approx 80 members
- Hard core of enthusiastic volunteers
- Clearing graves and pathways
- Website
- NextDoor group (50+ members)
- Remembrance event with Loxley Primary School



Connections

- Loxley School
- Heritage Fair
- Joined Up Heritage Sheffield
- National Federation of Cemetery Friends
- Local MP, Olivia Blake
- Wild Sheffield
- Friends of the Loxley Valley
- *and we must not forget support from Bradfield Parish Council*



Progress – before clearing



Before...



Spring 2021



Starting to clear at Long Lane



Summer 2021 volunteers



Summer 2021 volunteers



Before & after – check the red granite gravestone

February 2021



September 2021



Autumn 2021



Autumn 2021



2022



Future...

- Burial register & plans
- Grave restoration
- Environments/ecology/habitats
- Public access
- Histories
- Future burials
- Cemetery in wider context of area

