

Family History and the Great War

In this month of November remembering the 100th anniversary of the end of WW1, I thought I would share a little of my family history. So far, I have traced my maternal grandfather's family (the Crawts) back to around 1800, in Guildford. My grandfather, Fred Crawl, volunteered for the local Queens regiment in 1914; injured in France, he survived to marry and raise a family.

His older brother George, my great-uncle was not so fortunate. He enlisted in 1916 joining a PALS Battalion of the Middlesex Regiment. Following capture he died in a POW camp, and is buried in the Commonwealth War Graves Commission Unicorn Cemetery in France. His name is on the war memorial in the Castle grounds.

Jean Wickens



PT. G. CRAWT (Guildford), Middlesex Regt.
Died whilst a prisoner of war in Germany. See page 4.

THE SURREY TIMES.
APRIL 21, 1917

DIED IN PRISONERS' CAMPS.

News has been received by his relatives, living at 35, Stoughton Terrace, Guildford, of the death in a German prison of Pte. G. Crawl, Middlesex Regt., son of the late Mr. Crawl, of 34, Stoughton Terrace. Pte. Crawl joined the Army in March, 1916, and went to France in July, being taken prisoner in November. At the time of joining up he was working for Messrs. Pilm and Son, having formerly been employed as a fireman on the L. and S.W.R.

A field card was received by his relatives on Christmas morning saying he was quite well, and on April 1st news was received through the Central Prisoners of War Committee saying that he died on January 24th, at Vendhuille. He was 33 years of age.

Report in
The Surrey
Times,
April 21,
1917.

FRIENDS OF GUILDFORD MUSEUM NEWSLETTER

November 2018



Issue 39



FOGM Welcome desk at Alice Day - August 2018

From the Editor

Let me introduce myself as the new editor of the Friends of Guildford Museum Newsletter. It is a daunting task taking over as only the second editor of the newsletter in 24 years. Eric Morgan will be a very difficult act to follow!

Eric, as many of you know died earlier this year and later in the newsletter I've included his obituary (page 7) which appeared on the Guildford Dragon website. 2018 has not been a kind year for our founder members. In addition to Eric we lost Marjorie Williams (see obituary page 8). Barbara Downing a stalwart of the committee, also died following a long battle with cancer. For many years Barbara organised the summer village visits. To compound our losses, Andrew Longworth, Guildford Heritage Services Curatorial Assistant, who worked closely with several FoGM members, and contributed articles to this newsletter sadly took his own life. Catriona Wilson has contributed an article about him. We remember them all for their contributions to Guildford's heritage and Friends of Guildford Museum.

On the positive side, we have a new Secretary – Carol Brown, familiar to all of you from her many years working at the Museum, with a wealth of knowledge about Guildford. We also have two new organisers, both non committee members: Carol Smithyes and Chris Hetherington. Carol now manages the Undercroft Volunteer rota (and welcomes new volunteers) and Chris is arranging a series of winter talks.

This year also saw our first exhibition at the museum as part of a new exhibition series for community groups. A summary of Tunsgate - A Century of Change is on page 5. Thanks must be given to the main organiser and collator, Nick Bale who worked in collaboration with Melanie Holliker at the museum; and all the other contributors who researched, produced articles and gave permission for their photos to be used. An enormous amount of information was found, not all of

which could be included in the exhibition. We hope to include some of this in future newsletter articles.

If you missed the exhibition there will be another chance to see it as it goes on show in the Assembly Room at Guildford Institute for three weeks from 18 February to 9 March 2019.

Suggestions for newsletter articles are very welcome – perhaps you have a story to tell about a connection with the museum or Guildford's heritage and history? Maybe you have researched Guildford's past or know someone who has, and would be willing to write an article? The newsletter comes out approximately once a year so you have plenty of time to put pen to paper, or in these days, fingers to keyboard or tablet. My contact details are below.

Jean Wickens

01483 531436

jeanpwickens@gmail.com.

11 Wendy Crescent, Guildford GU2 9RP

UPDATE ON GUILDFORD MUSEUM DEVELOPMENT PROJECT

As Friends of Guildford Museum you are key stakeholders in helping to transform Guildford Museum. This exciting project aims to create an updated and improved attraction for more people to enjoy, providing a strong link to the castle grounds, opening up and connecting these significant heritage sites.

I have been appointed as an external consultant to manage and help drive the project forward on behalf of the Council and wanted to give you an update.

During this phase of the project ideas for the contents of the new Museum are being developed, in consultation with interest groups. The Council has appointed three consultancies to help develop these ideas:

- interpretative planners (ZMMA) to develop the display and exhibition contents
- activity planners (Julia Holberry Associates), who will develop exciting new activity, events and workshop programmes
- business planners (Fourth Street), who will examine the sustainability of the new Museum and propose possible new income generation streams.

The architects (also from ZMMA), will respond to the work of the three consultancies in developing plans for the proposed building improvements and new construction.

The work is divided into four phases.

1. Background research – where all the consultants familiarise themselves with the Museum, the collections and Guildford. This is now complete.
2. Outline proposals – where the consultancies develop ideas for vision, interpretation, activities and business planning, based on consultation with stakeholders and interest groups. We aim to complete this by Christmas.
3. Detailed proposals – where the ideas are finalised, approved and appropriate reports produced.
4. Guildford Borough Council approval – this is when the Council considers and decides how to proceed with the project, on the basis of all the work done and the potential capital and ongoing running costs.

I have already been consulting with your Chairman, Jen Powell, and one or two of your committee members and I look forward to working with the Friends in the coming months.

Julia Holberry

Tunsgate - A Century of Change

The exhibition which ran for eight weeks from 21st April to 16th June covered the years from 1918 to 2018. The timeline of panels on the walls covered different aspects of Tunsgate's history, with cases showing artefacts from this period.



In 1918 Tunsgate was a dark narrow alley with houses on both sides, a pub, The Three Tuns and a few businesses. The old Baptist Chapel was at the top end of the street facing the Castle.

Tunsgate Arch, built in 1818, was still largely walled off at the back by council offices. There was just a narrow passage at one side through to Tunsgate itself.

In 1915 the Cable and Reeks building adjacent to Tunsgate had burnt down and it was decided to use this space to raise money for the war effort, with a mock up of the Western Front prior to redevelopment. Over £280,000 was raised.



This area was used to build a smart new cinema which opened in 1922, reached through an arcade of shops which included Harvey's drapery store. The Picture Playhouse as it was called finally closed in 1966 and Tunsgate Square came into being.

Meanwhile in Tunsgate itself, a number of well remembered shops and businesses were established: Jefferys - initially a motor cycle depot; Quittenton umbrellas; The London Camera Exchange and Boxers Cafe.

QUITTENTON
105½ High St.,
GUILDFORD

Nothing better for a
Present
than a nice
**Umbrella or
Walking Stick**

All types of
Safety Razors
and blades.
2/6

Ebony Goods, . . .
Brushes, Combs, &c.
Shaving Brushes, &c.

A handmade umbrella was a mark of distinction for gentlemen; in particular, businessmen who worked in the city.

In 1970 developments in Tunsgate Square, and in 1984 Jeffery's motor cycle shop and repair works, led to exciting archaeological discoveries and further evidence of the history of Tunsgate.



Obituary: Eric Morgan, Contributor To Local Education and Heritage and Founder Member of FOGM



Long term Guildford resident Eric Morgan, well known for his contribution to education and enthusiasm for local heritage, died suddenly on New Year's Day (2018) after a short illness, aged 86.

Last summer (2017) Eric celebrated his diamond wedding anniversary with his wife Sandra and their family. They came to live in Guildford in 1957 and brought up three children, Tanya, Gavin and Candace, on Fairlands Estate.

In the 1970s Eric became involved in education issues and served as chairman of the Guildford branch of C.A.S.E (Council for the Advancement and Support of Education). He served as vice-chairman of Womersley and Shamley Green Primary School, where he was a very enthusiastic Father Christmas! One year a local farmer flew him to the school by helicopter and another year a parent brought him in on a sleigh pulled by huskies. For the last 20 years he had been serving on the Surrey County Council Schools Admission Appeals Committee.

Eric loved the theatre and in the 1960s and 1970s he and his wife attended virtually every production at the Yvonne Arnaud. When, in 1977, David Clark's Silver Jubilee Pageant offered the chance to dress up and perform in Shalford Meadows, Mr Morgan took his children along to take part. It was an opportunity to make many life-long friends with whom he would work in the future.

It was after he took early retirement in the 1980s that Eric was really able to get involved in local issues. He started with the writing and recording of local history articles for newsletters for the blind. He helped set up the Guildford Town Guides with Marjorie Williams under the direction of the then curator of Guildford Museum, Matthew Alexander. For many years he organised the Town Guide rota and especially enjoyed co-ordinating and taking school children on tours of the town. He was a tour guide at Guildford Cathedral for over 20 years and a founder member of the Friends of Guildford Museum. He joined the committee at the outset and has edited all the Friends newsletters since.

As a scientist and fan of The Goon Show, he was particularly interested in the crazy world of Lewis Carroll, and regularly gave talks on Carroll's connections with Guildford.

Above all, Eric was a kind, patient man who loved his family and always put others first. He will remain an inspiration and will be fondly remembered.

Gavin Morgan

This obituary appeared on the Guildford Dragon website

Obituary:

Marjorie Williams (1930-2018) – Founder Member of the Guildford Town Guides and FOGM

Marjorie Williams died in Guildford on August 30, at the age of 88. She had been born Marjorie Taylor on March 8 1930 in Hull. She studied English at Birmingham University, where she met Richard Williams who was studying physics after completing his wartime service. They married in 1952 and had three sons, James, Matthew and Henry.



The family moved to Guildford in 1968, and Marjorie worked as a remedial teacher at George Abbot School from 1973 to 1989. She then worked part-time at Guildford Museum until 2006 as a valued member of staff.

Marjorie had always had an interest in local history and archaeology, and was an active member of the Guildford Group of the Surrey Archaeological Society. She attended the local history class which I started at the Museum in 1981, and as a result was a founder member of the Guildford Town Guides, becoming the group's co-ordinator in 1983.

Marjorie enjoyed doing the research for new walks, and particularly enjoyed the investigations for the 'Lewis Carroll and Guildford' walk. Together with the Lewis Carroll Society she was instrumental in having his grave in the Mount Cemetery restored. When the annual Heritage Open days were begun in 1994, Marjorie organised the stewarding of historic buildings by the Town Guides, and continued to be involved with the Town Guides until five years ago.

Marjorie was also the secretary of the Friends of Guildford Museum at its formation in 1994, before becoming co-ordinator of volunteers. One of her first achievements as coordinator was to convince Guildford Borough Council to continue to lease and maintain the Undercroft as a visitor attraction. When it was displayed as a medieval Wine Merchant's shop in 1998, the significant contributions made by the Friends was crucial to its success. Marjorie was still organising the steward's rota for the Undercroft until last year. She was also a key figure in the Friend's purchase of the Victorian Schoolroom, set up for visiting school children.

Although far too modest to acknowledge her contributions, Marjorie dedicated herself for over 30 years as an advocate for the town and its heritage. Her work was, however, celebrated by the town in 2006, when Marjorie was chosen to present the traditional plum cake to the Queen and the Duke of Edinburgh when they visited Guildford on Maundy Thursday.

Her numerous contributions to the community were further officially recognised in the New Year's Honours in 2008, when she

was made an MBE. The community has been enriched by her, and the community will mourn her loss.

Marjorie is survived by her three sons, and will be greatly missed by them, their families and her friends.

Matthew Alexander

This obituary appeared on the Guildford Dragon website and includes additional text from Matthew's address at Marjorie's funeral.

Obituary:

Andrew Longworth, Curatorial Assistant at Guildford Museum

Myself and colleagues of Guildford Heritage Service were shocked and saddened to learn of the death of our curatorial assistant, Andrew Longworth, in early September.



Andrew joined the heritage team in June 2013, having been at Peterborough Museum and the Great North Museum in Newcastle upon Tyne before that. Andrew was a superb historian, both at work and in his personal life where he pursued his family history avidly. He preferred accuracy above all else and enjoyed solving puzzles for enquirers and exhibitions, which he did

with quiet good humour. His knowledge of 20th-century pop music helped us to succeed in many a pub quiz. He was a teller of stories.

Tragically, we now know that Andrew took his life. His family have asked us to be open about how he died, and knowing him as we do we are certain Andrew would prefer this as well – honesty and integrity were of paramount importance to him.

People are often described as unique. In the literal sense that is true about every person, but I hope you will believe me when I say that Andrew really was a one-off.

He was reserved at first meeting so didn't always make a big initial impression, but once he had warmed to you that would all change and he would be glad to share his (often very strong) opinions. Sometimes this could be frustrating (especially as he was so often right!) but we all appreciated his candour. If Andrew told you he thought your work was well done you knew absolutely that this was the case. He was authentic, always frank and open about his opinions, never false.

Andrew and I didn't always agree – in fact, we frequently disagreed on how to go about our work, not helped by the fact that we are both a little stubborn, but despite this we almost always saw eye to eye.

We agreed about the reasons for doing a thing if not the way to go about it. I am not sure I will work with anyone quite like Andrew again – he was the opposite of me in most ways but this was always beneficial to our working practice as it allowed us to compare options and find the middle path.

Many of us have asked each other and ourselves if we had known this was coming. The honest answer is that we couldn't have, for a number of reasons not least of which the fact that Andrew enjoyed his job so much. We were privileged at Guildford to see his best side at work because he truly loved being here.

Nick Bale with Andrew



Andrew was buried on a wind-swept hillside in Bolton, his hometown, on September 21 on a day that was sometimes sunny, sometimes rainy. This followed a beautiful service at the grand and historic Bolton Parish Church (a cathedral in all but name).

His family wrote and read moving poems to their brother and son, his friend told us about Andrew as a childhood ally, and both myself and retired museum colleague Carol Brown were given the honour of sharing a little of his working life in Guildford.

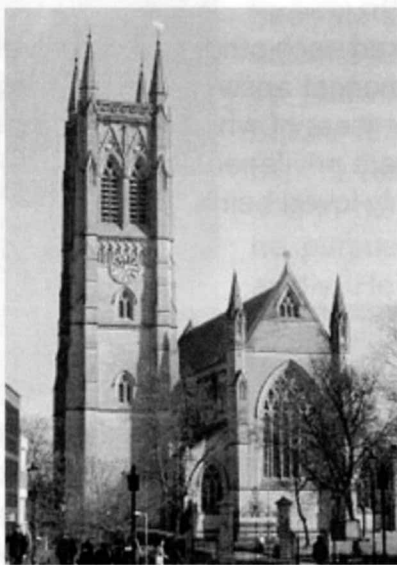
The family's choice of church was perfect in so many ways: Bolton Parish Church stands atop Saxon foundations in the heart of the oldest part of Bolton, so would have been seen by the generations of Andrew's family that he came to know so well through his genealogical research.

The church itself seemed fitting to me as it is grand and significant, but not self-imposing or self-important. This sums up Andrew's work rather well: always certain in his approach, but never arrogant.

We will gather at the museum on Thursday November 8 to celebrate the life and work of our wonderful friend and colleague.

Catriona Wilson, Collections Manager, Guildford Heritage Services

This obituary appeared on the Guildford Dragon website



Bolton Parish Church

Christmas at the Castle

We have been asked to do the welcome desk again at Christmas at the Castle on Saturday 1st December. As last year, the theme of our stall will be gingerbread men, and we hope we have the same sunny weather. If you are able to help please contact Nick Bale.



Inspired by Alice Day – The crowds flock in

The Castle grounds were again drawing in crowds of visitors for the 'Inspired by Alice' Day on this hot Sunday in August. A team of Friends manned the welcome table which was fortunately located in a shady spot close to the Tunsgate entrance.

The publicity for the event had certainly done its work as a significant proportion of visitors had not visited the Castle grounds before. The maps we were handing out were therefore much in demand. We also were offering children a trail on a theme of hats devised by Margaret Jackson. Almost every child of a suitable age wanted to do this. For adults, we were handing out goody-bags with offers from local businesses organized by Experience Guildford.

If we were not busy enough already, we were also encouraging visitors to enter our jam tarts tombola which contributes to our funds. The yells and shouts of the Norman knights fighting on Castle green added to the festive scene.

Congratulations to Lynn Szygenda (dressed here as Alice) and her colleagues for organising such a successful event and many thanks to the Friends who volunteered their time for this event.

Nick Bale



MUSEUM SHOP

The Museum shop has some interesting new additions to its range. These include biscuits, sweets and mugs (with or without packets of tea) with 'Guildford' on them. Ideal, if you have friends abroad, to whom you send Christmas presents.

Remember that as Friends you receive a 10% reduction on items bought in the shop.

Carol Brown - Our New FOGM Secretary



I have taken over from Jean as Secretary on the FOGM Committee. I know the museum well, having retired last Christmas after working there for 30 years, so am pleased to now be able to become more active with the Friends.

My interests are in research of local history, and women's history, particularly women in the military and the Special Operations Executive. Another area of interest and research is the Suffrage Movement, particularly locally. I give talks to many Groups and U3As.

I have two granddaughters and am very involved with St Johns Church, Stoke Road where I worship and also, I teach Sunday School and am a Leader at The First Guildford Girls Brigade, So what is this word retirement!!!

I know many of you through my museum work and look forward to meeting more of you at events in the future.

Carol Brown