

ELSTEAD & WEYBURN NEIGHBOURHOOD PLAN - THE FUTURE OF OUR VILLAGE

What is it all about?

Elstead and Peper Harow Parishes have agreed to set up a Neighbourhood Plan to at least partly control future development of the area.

The first stages of setting up the Neighbourhood Plan Team are nearly complete, with the forming of Work Teams to carry out the next stages of the Plan development.

The Teams will be asking some very basic questions:

- What currently exists in Elstead and Weyburn?
- What would we like to see here in the future?
- What do we want more of?
- What do we want fewer or less of?

The last question can produce a list as long as you like including power cuts, flooding, phone outages, traffic, parked cars, vandalism, closed retail and employment opportunities and the rest!

The main objective is to ensure that Elstead and Weyburn remain good places to live and work in for the future.

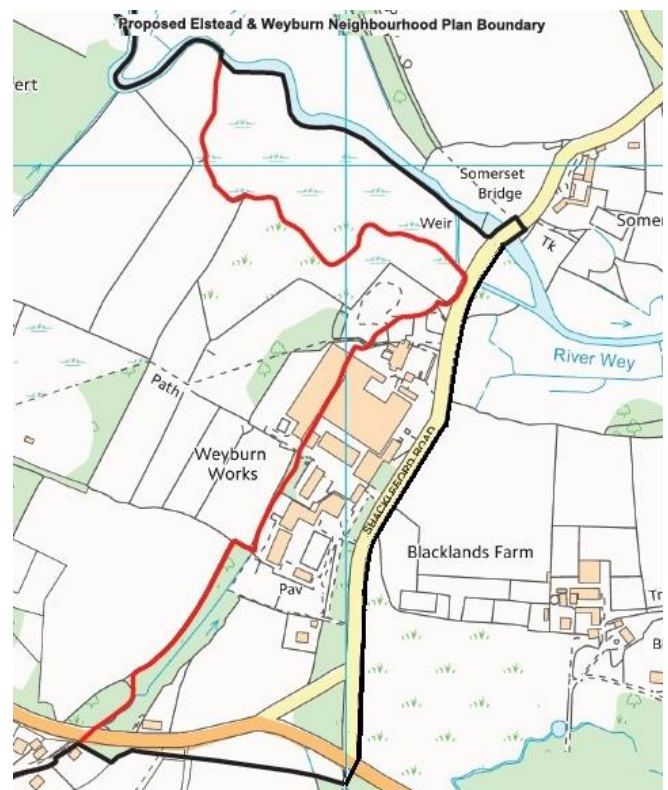
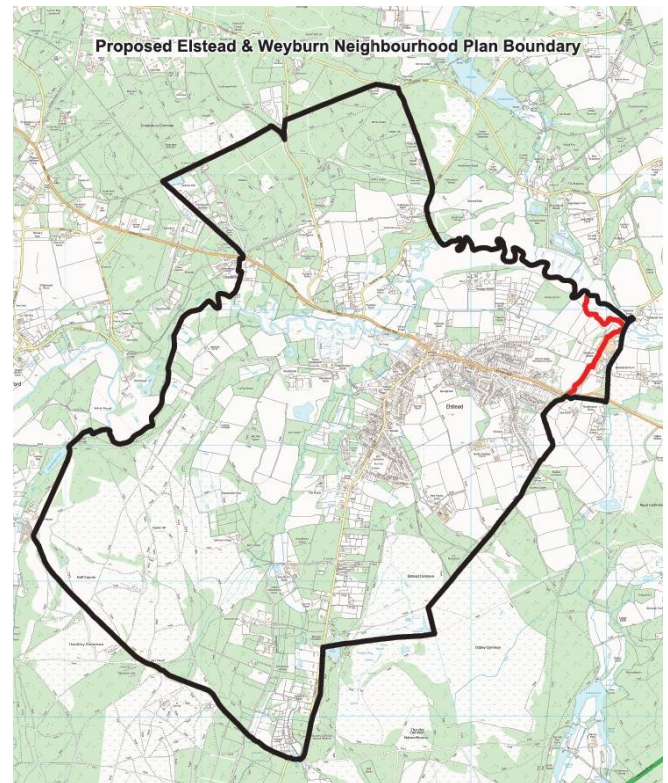
Do we have a plan for this project? Yes!

This is dictated by the procedures needed to develop a Neighbourhood Plan that will be accepted by Waverley and an official Examiner, as well as being supported by at least 50% of residents of Elstead & Weyburn who vote in a referendum.

The next stage is for the Work Teams to investigate the current state of the Neighbourhood Plan Area and to assess what changes we would like to see or avoid in the future. A lot of information is already available and they will have the expert help needed to prepare the evidence collected in a form suitable for the writing of the Neighbourhood Plan Policies. The public will be consulted throughout.

Towards the end of March there will be a public meeting and exhibition to report progress and display the results of the investigation work done by the Teams.

After that the next stage is to review and revise the information and begin Policy Writing for a Draft Plan for submission to Waverley. There will then be a Consultation period, an official Examination and, if accepted by Waverley, a Referendum. The whole process could be completed by early 2016.



CONTACT US

Anybody who wants to work with one of the Investigation Work Teams or supply information please email: Elstead-30@tiscali.co.uk or leave a phone message on 01252 413 752

**Elstead & Weyburn Neighbourhood Plan
Initial Planning Workshop
Observers' Views**

The first public event to start work on creating a Local Plan for Elstead was held on the evening of Wednesday 14th January at the Golden Fleece. It was advertised locally beforehand, and the response was greater than expected, with approx. 50 people attending. It was heartening to see a wide cross-section of people there showing their concern to be involved in the future of Elstead, but the room booked for the workshop did become somewhat overcrowded and noisy!

A Planning Consultant, Angela Koch organised us into four groups of about eight people. Two groups then moved to tables in the public area to create more room and less noise in the meeting room.

Large scale maps were provided with a selection of pens and coloured markers so that each group could mark up the maps with the features appropriate to its group and to make working notes; their work began with enthusiasm - aided by filled glasses - and continued for two hours, with Jane Jacobs, Angela Koch and Michael Organe visiting each table at intervals with help and advice.

The four group headings were: Housing & Community facilities; Transport & Parking, Utilities and Services; Environment, Heritage & Design; Local Employment. Each contains numerous sub-headings, and future work for each group will be substantial. A fifth group had started work earlier to consider the Weyburn industrial site, which is partly in Peper Harow.

The groups went home and will meet again in January for the next stage of researching all the facilities and needs of the Parish.

Environment Heritage & Design

The working group looking at protecting and enhancing our environment and heritage (which includes recreation, sport and access) laid a good foundation by identifying what provision we already have in the village, from the conservation areas and listed buildings to the floodplain, rights of way, sports facilities and clubs and landscape areas of importance to the community, notably Bonfire Hill and Springhill as well as our open commons. We will build up information on what we have and then move on to what provision the village would like over the next 20 years. If you would like to contribute to this then please get in touch!

Housing and Community Facilities.

This Work Team has a very wide brief as it has to cover not just future housing development in Elstead & Weyburn but the impact that development has on the various facilities in the area, including education and medicine. They have made a good start in all areas.

Transport, Parking, Utilities & Services

This covers another very wide brief, as all aspects of Transport & Parking will be investigated, as well as the current and future requirements for Electricity, Gas & Water Supply, Sewage, Land Drainage & Flood Protection.

As with the other Teams they did a lot of work at the Workshop and have the advantage of at least two long serving residents with close knowledge of local issues in this area.

Employment.

This brief includes investigating existing employers in the whole of the Plan Area, including outlying farms and stables and employers in the part of Peper Harow that are within the Plan Boundary. Some consideration will also have to be given to the needs of employees, even if they come from out of the area. Again a good start was made at the Workshop.

Weyburn Industrial site.

A special Team has been set up to investigate the possibility of Housing development on the old Weyburn Industrial site. It is owned by a company that wants to develop it for housing and an exhibition was held recently in Elstead to introduce outline proposals for 77 new homes on the site.

This is a brownfield site that has been identified by Waverley as suitable for development but a large housing estate would have a very considerable impact on all aspects of the infrastructure in the area. Because of this it seems essential to investigate the issues as quickly as possible in order possibly to influence any application for development.

The work that this Team does will feed into the work done by the other Teams looking at the longer term future of Elstead.

Weyburn is in Peper Harow Parish but has been included in the Plan boundary as development there will have a major impact on facilities in Elstead.