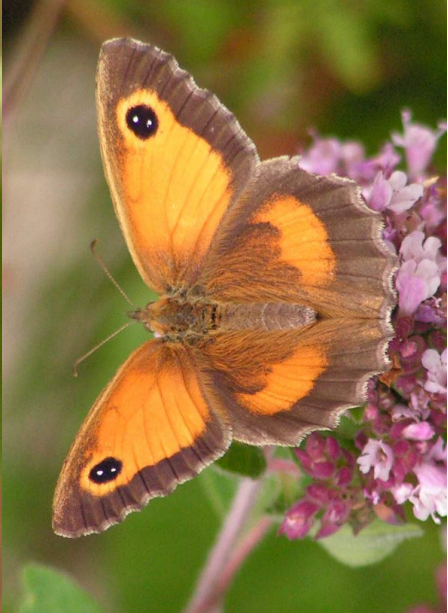
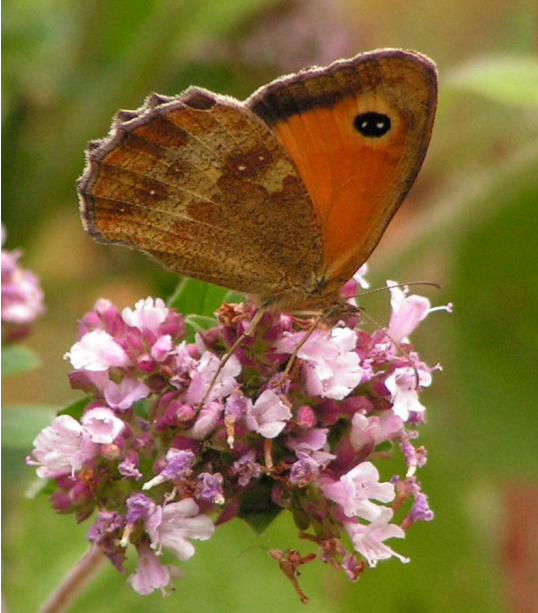
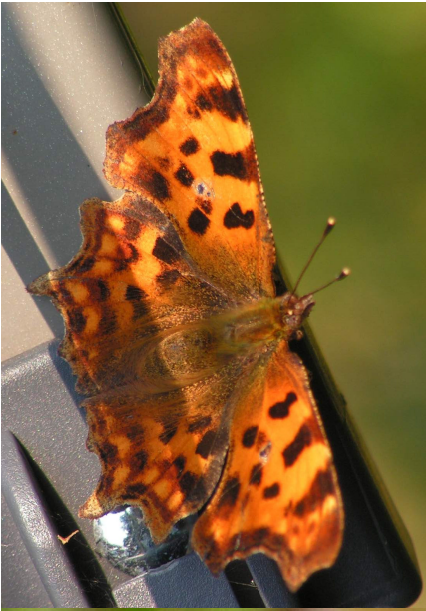


***EAST
HANNINGFIELD
NEWS***

*Summer 2012
No. 140*



FROM THE ACTING EDITOR

East Hanningfield News is published by East Hanningfield Parish Council and delivered by volunteers free to all homes in the parish. Inclusion of articles or advertisements does not signify endorsement by the Parish Council.



**Copy date for the next edition is
Sunday 12th. August at the latest!**

For publication on 1st. September. Please continue to send articles and advertisements to me at 2 Clinton Close or karen.plumridge@btinternet.com .

Please note that it is sometimes necessary to edit articles, for example, to fit them in to the space available, or because they duplicate what is written elsewhere. This will be done without reference to the originator of the article.

This and previous issues can be seen at www.essexinfo.net/easthanningfieldparishcouncil/east-hanningfield-news/

COVER PHOTOGRAPHS

The top pair of photos are of a female comma butterfly. You can see the white comma on the under-wing. Commas like to lay their eggs on hops, but where they are missing will use nettles instead. The lower photos are of a female gatekeeper otherwise known as a hedge brown. Gatekeepers lay their eggs in long grass, so both these butterflies rely on “untidy” areas to survive.

You should be able to see them in this parish during the summer months.

PARISH COUNCIL

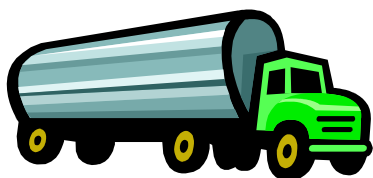
Slipped into the centre pages of this edition of the News you should have found a housing survey. PC has arranged for this survey to be carried out by the Rural Community Council of Essex in order to find out whether there is a need for more affordable housing for local people, and if there is a need, to find out how many homes are required. If you have not received a survey form with its reply paid envelope, please contact the Rural Housing Enabler, Moira Groborz on 01376 574330 or by e-mail at moira.groborz@essexrcc.org.uk and she will provide you with one, or more if you have more than one household living at your address.

Please note that PC has not identified a site where affordable housing for local people might be built.

Enough volunteers have now put themselves forward to comprise a viable Village Design Statement group, and they will be starting the project soon. A VDS looks at the locality in planning terms, and examines what local features enhance the area and should be retained, and, conversely, what are eyesores, and what styles should be used in future development. If you would like to participate in the process, please get in touch, preferably by email if you have that facility, but with your telephone number and address if you do not.

From Monday 2nd July 2012 some Monday to Friday Service 3 journeys will be re-routed between Rettendon Common and East Hanningfield to operate along Buckhatch Lane and Creephedge Lane. All Saturday services will operate along the new section of route and will be retimed. The new section of route will be hail and ride meaning buses will stop where it is safe to do so. In addition Essex County Council and RHS Hyde Hall are working together to provide some new bus stop infrastructure on Buckhatch Lane adjacent to Hyde Hall and it is hoped some of this will be in place for the start of the revised service. There are four variations of the Number 3 service & they are as follows: No.3 serves all stops between Chelms-

ford and Southend with some journeys starting & terminating at Oxney Green; No. 3a is the same as No. 3 but will not serve Hyde Hall; No 3b will not serve Great Baddow, East Hanningfield or Hyde Hall; and No 3c is the same as No. 3 but will not serve Great Baddow. There will also be some improvements to the vehicles which are currently used on the service including repainting in Regal's new colours, installation of electronic destination blinds, refurbishment of seats and improvement of interior signs. Regal Busways hope all these changes will have a positive impact on the service and increase ridership to secure its future. The new timetable will be displayed in the bus shelters, but if you have the facility it is always best to check the County Council's website for the most recent timetable information at [www.cartogold.co.uk/Essex Public Transport/](http://www.cartogold.co.uk/Essex_Public_Transport/) . For information about Summer Day Trips from the village please go to www.regalexplorer.co.uk or look on the noticeboards.



Thinking ahead to when your central heating will go back on, you might be interested in an Oil Buying Scheme being set up by the Rural Community Council of Essex. RCCE is a long established charity that works with rural communities in Essex. Membership of the scheme for households will be £20 a year and for this RCCE will negotiate with suppliers for the lowest price. Deliveries to members in an area will be on the same day, thus reducing diesel usage and delivery traffic. If you would like to know more I can forward you an email with the explanatory leaflets or you can find the information on RCCE's website www.essexrcc.org.uk . The administrator of the scheme is Sara Ward who can be contacted on 01376 574340 & oil@essexrcc.org.uk . The RCCE is looking for a local volunteer to co-ordinate orders who will, in return, receive free membership of the scheme.

Thank you to everyone who turned up on a damp Saturday morning at the end of April to participate in the Village Tidy-up, and also to those who chose to do their bit at another time when it wasn't quite so inclement. Our village and surrounding lanes continue to be used

as a dumping ground by those who can't be bothered to deposit their rubbish in the appropriate place, so the Tidy-up continues to be necessary and markedly improves the appearance and safety of our surroundings.

The PC's Annual Report has been published and as usual contains an overview of the year and the receipts and payments account for the year which ended on 31st March. This and several previous Annual Reports can be found on the website under 'Publications' and 'Annual Report'. If you would like a paper copy please contact me.

The two Play in the Park sessions during the Easter break went very well, with over 50 children attending the first and about 20 the second. There are to be three more during the summer break for ages 0-11 years, all on Tuesday mornings 10-12 noon. For each of these sessions a different additional activity has been booked. On **24th July** it will be **Street Dance** for ages 6-11, on **14th August** it will be **Go Ride Cycling** for ages 8-11 and on **28th. August** it will be **Group Fitness** for ages 6-11.



I have received notice from the County Council Highways Department that they have scheduled several road closures within an 18 month period beginning 4th. June. Roads listed in this and neighbouring parishes are Back Lane; Bicknacre, Priory Road; Danbury, Bicknacre Road; Sandon, Butts Green Road, Hulls Lane, Southend Road; South Hanningfield, Church Road, Ramsden Heath, School Road, Downham; West Hanningfield, Ship Road/Holiday Hill. Residents will receive notice by letter at least 14 days in advance of the dates their roads will be closed. Everyone else will have to look out for the warning signs!

Chelmsford Borough Council's Overview and Scrutiny Committee recently approved an Equipped Play Area—Draft Development Plan, which it is proposed should go to Cabinet for approval in July. With

regard to East Hanningfield the Plan states, “ All play areas are located within 100m of each other with good footpath access. East Hanningfield Parish Council neighbourhood play area provides excellent play value, diversity and is accessible for all parts of the village. It is proposed to remove both small local play areas (Payne Place and Catherines Close) as they represent over provision and do not add any significant play value in this area”. The areas would be left as green space. Please let me know if you have a comment on this.

Forthcoming PC Meetings are the following Thursdays: 28th. June, 19th. July & 23rd. August. Agenda are displayed on the noticeboards and posted on the website at least three days beforehand.

Karen Plumridge, Clerk to the Council
400628 karen.plumridge@btinternet.com
www.essexinfo.net/easthanningfieldparishcouncil



Simon Houlding Upholstery
**TRADITIONAL & MODERN UPHOLSTERY
CURTAINS & BLINDS**
♦ est.1998 ♦

- Loose covers • Bespoke furniture • Antique restoration •
- Poles, tracks & tie backs • Fabrics • Repairs •
- French polishing •

Open 6 Days a Week

For Free Advice *and* Estimates call to
arrange an appointment *or* Visit our Workshop

T. 01621 859484 M. 07990 972676

Unit F, Stock Chase, Heybridge, Maldon, Essex CM9 4AA

www.houldingupholstery.co.uk

BOROUGH COUNCILLOR'S MESSAGE

What does it feel like to live in a city? Many people will be aware that we succeeded in attaining this great award against hot competition. What fewer people realise is that we were also in the top three for 'Council of the Year' and many say that we were robbed; but they would say that wouldn't they! As a city we are due for a share of fifty two million pounds of government for super Broad Band. My first question was 'Will this extend to East Hanningfield?' I await an answer.

What I do know is that my employer before I retired had a policy of being represented in every city in the UK and this is true of others and will bring needed employment and investment to our area. Personally, Julia and I have the honour of being the first deputy Mayor and Mayoress in an Essex City and we have heard nothing from the Guinness Book of Records yet.

We shall cease our duties on 23rd May and I hope to play a significant role in the administration formed with the new Mayor. This has been a very exciting year for the people of Chelmsford; what we must now do is to build on our success and status to ensure that the citizens benefit in every way possible.



Mike Harris
Member for Bicknacre, East and
West Hanningfield,
Chelmsford Borough Council
michael.harris@chelmsford.gov.uk

Intercounty



Serious about selling your home?

Ready for a refreshing alternative approach?

%

- ✓ Do you need to sell in a specific timescale?
- ✓ Do you want to achieve the best possible price fast?
- ✓ Do you need to attract a lot of interest quickly?

Then our For Sale by Tender option could be for you

It offers:

- ✓ No hidden costs the buyer pays the fees*
- ✓ Flexible planned sales process
- ✓ Your chosen closing date
- ✓ Dedicated Marketing support
- ✓ Same high level of customer service
- ✓ No Selling fees

For a service as individual as you are call

01245 200024

* There is an administration fee of £250 + VAT for you to pay but thats it!

Covering Great Baddow and the villages
6 Duke Street, Chelmsford, Essex, CM1 1HL

www.intercounty.co.uk

REVEREND PAM

Today the sun has broken through after many days of rain. I don't know how long it will last but there is a sense of wanting to make the most of it - get jobs done, be outside etc. - just in case this spell is short-lived and the sun disappears again.

I also wanted to make the most of having the Olympics in England. Unfortunately we didn't get any tickets for the Games, even after two applications. I still live in the faint hope that there will some returns of tickets and an opportunity to attend an event at the Games will unexpectedly arise.

There are some things which are temporary and which we have to make the most of while we can and others which we can rely on to always be there. Our church has been at its present site now for 128 years and fortunately looks as though it will remain in place for many more years to come. However, it does have needs. It is in need of some small and basic amenities in order to cope with modern expectations of hospitality. It also has needs of people support, in order to retain it, not only as a beautiful building, but also as a living, worshipping community. God gives us the opportunity to be part of his family. Although God is always there, opportunities to be involved in a faith journey may not always be there - we have to take them when we can. I am holding meetings for people who have questions about the Christian faith and who would like to chat about this in an informal way. Please get in touch with me if you would like to come along.

Enjoy the summer!

Rev Pam
pencofpam@btinternet.com
www.easthanningfieldchurch.org



.... **& FROM THE CHURCHWARDENS**

Church annual spring clean – thank you to the enthusiastic team of volunteers who turned up on Saturday 24th March. It was a long morning for everybody but produced one of the best results in memory. Symbolic of the success of the event was the transformed appearance of the flag pole, now gleaming white and looking like new - and in good time for the Diamond Jubilee celebrations too!

Maunday Thursday – grateful thanks also to those who hosted this year's **Agape meals** in their homes, allowing a record number to take part, and then to join together in church afterwards for a short service of Holy Communion – thus commemorating the last supper Jesus had with his followers before his arrest and death on what we can now call Good Friday.

Annual elections – the following were elected:

Churchwardens – Ron Attenborough & Sandra Robinson

Deanery Synod – no elections this year. Karen Saynor continues, but Martin Harcourt Williams resigned due to overload of his diary. One vacancy now exists, and this post includes ex-officio membership of the PCC.

PCC Members – Martin Harcourt-Williams was elected, along with Sue Edward & Jackie Feehan who were re-elected and so rejoin continuing members Lindsey Brannon, John Chadwick, John Coffin, and Gil & Stan Gordon. Following Sue Yeo's resignation, one vacancy now exists.

Annual Reports – copies of these are available in church for those who were unable to attend the Annual Meetings.

Replacement of Church heating – a firm of heating engineers is now engaged in designing a new heating system and we await their proposals in the next few weeks. Meantime our old boiler appeared to be giving up on us, but it proved to be through no fault of its own. The poor thing was actually being choked to near death by an accumulation of squirrel and bird nest material in the flue – half a black

sack full in fact!

Installation of additional facilities – some initial design options have just reached us from our architect and the PCC will be meeting shortly to take consider them. That’s got to be good news, at last.

Forthcoming services and events as currently known - please see the Village Diary on page 15-18 but watch out for further publicity nearer the time, giving final details of special events.

For further information about All Saints’ go to www.easthanningfieldchurch.org, where we also offer a direct link to the latest Village Diary on the Parish Council website.

Ron Attenborough 400361
ronald304@btinternet.com

Sandra Robinson 400819
sandra.robinson@btinternet.com

Baddow Plumbing Services



Replacement Boilers
&
Bathroom Suites



All Domestic Plumbing Work
Undertaken

Free Estimates



01245 - 358355

Stephen Bryan

HANNA'S FIELD CHARITY

Chairman's report to the 2012 AGM

This was a year of consolidation of the successes of earlier years and planning for the future.

Last year I expressed concern over the lack of new trustees joining the committee. I am very pleased that we now have three new members with the return of Jenny Ash from South Wales and the arrival of Steve Lambert & Malcolm Edward from the fete committee. Have you considered joining the committee? We would welcome new members to assist in the Charity's future development .

The work load of the Charity has again been borne by very few for the benefit of the many villagers and organisations who use the facilities at the village hall and sports field. No officers receive any remuneration for their hard work; all are volunteers and should be thanked for their efforts on behalf of the village.

We have said farewell to Sharon and welcome Dan and Jessica who took over the cleaning of the hall and organising the bookings following Sharon's move away from the village.

It is good that the Village Shop and Post Office remains in the village. If we are to retain the Post Office and Shop in the village it is essential that we all use the facility and support Ash.

The Annual Art Show continued as a major fund raising event exhibiting works from many local artists. This year's will be on 7th July.

The Village Fete, a joint venture with All Saints Church, was again very successful under the Chairmanship of Jackie Feehan providing a fun event for all villagers. It was good that the event was supported by several of our local businesses and we are very grateful

for their sponsorship. This year's fete will be on Sat. 8th September.

We have continued running quarterly Book and Coffee Sales on Saturday mornings in the upstairs committee room. These regular book stall events have proved popular and successful and we have recently added shelving and storage in the loft area to expand the number of books we are able to store and display.

We are considering the priorities for developing and maintaining the facilities at the hall and field. There are a number of projects which we would like to undertake and they are all dependent on our successful application for grants to fund each project.

More information about the Charity can be found on our website which is part of the Parish Council website: www.essexinfo.net/easthanningfieldparishcouncil/village-hall/ .

If there are any questions I will do my best to answer them

Colin Warren, Chairman 25th April 2012
401050 cwarren132@aol.com

SPORTS COURT—USE IT OR LOSE IT?

The surface of the court has deteriorated so that it is no longer suitable for tennis, netball, 5-a-side football etc. Before spending around £20,000 on refurbishment the Charity needs to be convinced that there is a local need for the facility, so would like to hear from residents what activities they and their family members would like it set up for and what use they would make of it.

A fill-in slip will be available for you to complete in the shop or you can contact Wendy Thomas, HFC Secretary with your views on 400797.

BETHEL CHURCH—It's The Year Of Jubilee

Sixty years of reigning Great Britain as Queen. I for one would say that HRH Queen Elisabeth II has served with much grace and great dignity during this time (this will do my chances of a knighthood no harm). And I really hope that the Jubilee celebrations taking place across the land, will rekindle some much needed community spirit.

One of the toys I enjoyed when I was growing up was Etch-a-Sketch. A wonderful low-tech device. No digital readouts. It didn't bleep or flash at you. It didn't even require batteries. You simply twisted two knobs on the bottom of the screen to draw a picture. And best of all, if you messed up, all you had to do was shake the thing to get a clean screen – a chance to start all over again.

Now wouldn't it be great if some parts of life were like an Etch-a-Sketch eh? Particularly credit cards, give it a shake and it back to zero. Unfortunately it doesn't work like that for credit cards or any other part of life, you don't get the chance to start over again.

Unless it's with God!

Let me introduce to you the concept of Jubilee from the Old Testament. Every 49 years the Jewish Day of Atonement was to be replaced by the blowing of the trumpet of the Jubilee. It was to be a day of rejoicing and jubilation. So we read in Leviticus 25:8-13

This signalled a permanent release of all unpaid debts. All who had lost their land through debt could return and reclaim their inheritance – a sort of divine Etch-a-Sketch; the slate was wiped clean.

There is a tremendously significant application of the concept of Jubilee in the New Testament that applies to us today. 'The Year Of The Lord's Favour' (Luke 4:16-21). Not a calendar year but the period when salvation would be proclaimed. A time to receive the love and mercy of God through the death and resurrection of his son, Jesus Christ. Truly a time to start all over again.

So this Diamond Jubilee, when you are proudly flying the union flag

VILLAGE DIARY

www.essexinfo.net/easthanningfieldparishcouncil/village-diary-2012/

JUNE

- Fri 1 9.30-11.30 **HANNA'S TOTS** in the Village Hall. Entrance via the back door.
- Sat 2 6-9pm **OPEN GARDEN** at The Limes www.ngs.org.uk/
- Sun 3 8.30am **HOLY COMMUNION** at All Saints' Church
10am **ALL AGE SERVICE** at All Saints' Church
10.45am **SUNDAY FAMILY WORSHIP** at Bethel Church
www.bethel-ec.com
2-6pm **OPEN GARDEN** at The Limes
- Fri 8 9.30-11.30 **HANNA'S TOTS** in the Village Hall. Entrance via the back door.
- Sat 9 10am-12.30pm **BOOK SALE & COFFEE MORNING** in the first floor meeting room at the Village Hall. Browse and have a chat over delicious coffee and cake.
- Sun10 10.45am **SUNDAY FAMILY WORSHIP** at Bethel Church followed by a Fellowship Lunch.
11am **HOLY COMMUNION** at All Saints' Church
4pm **PRAYER GROUP HALF HOUR** at All Saints' Church
- Mon11 2.15pm **EDWARD BEAR CLUB** at All Saints' Church
- Tues 12 8pm **ALL SAINTS' PCC MEETING**
- Wed 13 2.35-2.55pm **MOBILE LIBRARY** at Ashley Green
3.15-4pm **MOBILE LIBRARY** at the Village Hall car park.
8pm **NEIGHBOURHOOD WATCH MEETING** at Bethel Ch
- Fri 15 9.30-11.30 **HANNA'S TOTS** in the Village Hall. Entrance via the back door.
- Sat16 12 noon **BBQ** at Bethel Church. All welcome.
- Sun17 10.45am **SUNDAY FAMILY WORSHIP** at Bethel Church
11am **HOLY COMMUNION** at All Saints' Church

- Wed 20 2pm **WOMENS INSTITUTE MEETING** in the WI Hall.
- Fri 22 9.30-11.30 **HANNA'S TOTS** in the Village Hall. Entrance via the back door.
- Sun 24 10.45am **SUNDAY FAMILY WORSHIP** at Bethel Church
11am **HOLY COMMUNION** at All Saints' Church
- Tues 26 10am **COFFEE MORNING** at Bethel Church
- Wed 27 2.35-2.55pm **MOBILE LIBRARY** at Ashley Green
3.15-4pm **MOBILE LIBRARY** at the Village Hall car park.
- Thur 28 8pm **PARISH COUNCIL MEETING** in the first floor meeting room at the Village Hall. Please use the side entrance.
- Fri 29 9.30-11.30 **HANNA'S TOTS** in the Village Hall. Entrance via the back door.

JULY

- Sun 1 8.30am **HOLY COMMUNION** at All Saints' Church
10am **ALL AGE SERVICE** at All Saints' Church
10.45am **SUNDAY FAMILY WORSHIP** at Bethel Church
www.bethel-ec.com
- Fri 6 9.30-11.30 **HANNA'S TOTS** in the Village Hall. Entrance via the back door.
- Sat7 10am-5.30p **ANNUAL ART EXHIBITION & SALE** at the Village Hall
- Sun 8 10.45am **SUNDAY FAMILY WORSHIP** at Bethel Church
11am **HOLY COMMUNION** at All Saints' Church
4pm **PRAYER GROUP HALF HOUR** at All Saints' Church
- Mon 9 2.15pm **EDWARD BEAR CLUB** at All Saints' Church
- Fri 13 9.30-11.30 **HANNA'S TOTS** in the Village Hall. Entrance via the back door.
5-8pm **SUMMER FETE** bouncy castle, swing boats, burgers, ice creams, coconut shy, cakes, stalls, displays & much more. All proceeds to East Hanningfield School PTA.

- Sat 14 11am **CAFE BAR** at Bethel Church
- Sun15 10.45am **SUNDAY FAMILY WORSHIP** at Bethel Church
11am **HOLY COMMUNION** at All Saints' Church
- Wed18 2pm **WOMENS INSTITUTE MEETING** in the WI Hall.
- Thur 19 8pm **PARISH COUNCIL MEETING** in the first floor meeting room at the Village Hall. Please use the side entrance.
- Fri 20 9.30-11.30 **HANNA'S TOTS** in the Village Hall. Entrance via the back door.
- Sun22 10.45am **SUNDAY FAMILY WORSHIP** at Bethel Church
11am **HOLY COMMUNION** at All Saints' Church
- Tues 24 10am-12 noon **PLAY IN THE PARK** for 0-11 years at East Hanningfield Village Hall and playing fields. With Street Dance for ages 6-11. Provided by Chelmsford Borough Council & East Hanningfield Parish Council.
10am **COFFEE MORNING** at Bethel Church.
www.bethel-ec.com
- Sun29 10.45am **SUNDAY FAMILY WORSHIP** at Bethel Church
11am **5TH SUNDAY SPECIAL SERVICE** at All Saints' Church

AUGUST

- Sun 5 8.30am **HOLY COMMUNION** at All Saints' Church
10am **ALL AGE SERVICE** at All Saints' Church
10.45am **SUNDAY FAMILY WORSHIP** at Bethel Church
www.bethel-ec.com
- Sun12 10.45am **SUNDAY FAMILY WORSHIP** at Bethel Church
11am **HOLY COMMUNION** at All Saints' Church
- Tues 14 10am-12 noon **PLAY IN THE PARK** for 0-11 years at East Hanningfield Village Hall and playing fields. With Gor Ride Cycling for ages 8-11. Provided by Chelmsford Borough Council & East Hanningfield Parish Council.
- Sun 19 10.45am **SUNDAY FAMILY WORSHIP** at Bethel Church
11am **HOLY COMMUNION** at All Saints' Church

- Thur 23 8pm **PARISH COUNCIL MEETING** in the first floor meeting room at the Village Hall. Please use the side entrance.
- Sun 26 10.45am **SUNDAY FAMILY WORSHIP** at Bethel Church
11am **HOLY COMMUNION** at All Saints' Church
- Tues 28 10am-12 noon **PLAY IN THE PARK** for 0-11 years at East Hanningfield Village Hall and playing fields. With Group Fitness for ages 6-11. Provided by Chelmsford Borough Council & East Hanningfield Parish Council.

LOCAL NUTRITIONAL THERAPIST ANSWERS QUESTIONS ON WEIGHT

With summer fast approaching many of us begin to think about dieting. Nutritional Therapist Emma Cockrell, of Old Church Road, answers your questions regarding diet and weight loss.

Why are so many people struggling with weight issues? The modern-day diet is far from what we were originally designed to eat. Manufactured & processed foods may have chemicals (e.g. MSG), sweeteners (e.g. aspartame) & sugar added to excite our taste buds & create a desire for more. Although processed foods may be high in calories, our bodies will still be hungry for vital nutrients.

What foods should we be eating for weight loss? Get back to basics. Increase vegetables at each meal. Fill up on these low calorie, nutrient-packed foods and enjoy fresh fruit as desserts. Eat quality protein –chicken, eggs, fish, beans and legumes. Swap to eating whole grains –brown bread/rice/pasta – which contain more nutrients and help you to feel full longer. Cut out sugar – it really is not helpful for weight or long-term health, so re-educate taste-buds to flavours without added sugar. Limit carbohydrates at the evening meal as less energy is generally needed in the evenings. Drink more water.

What about exercise? Everyone can get more active. Get off the bus or tube one stop earlier: use the stairs rather than the lift. Enjoy a walk after dinner or take the kids for a bike ride during these light evenings. Build exercise into daily life so that it can be maintained. For more info check out my website: www.emma-cockrell.com. A consultation may provide more specific and personalised answers.

Continued from page 14

and enjoying time with family and friends, spare a thought that you are also living in a time when all those who receive the message of salvation will enjoy new and abundant life.

We are having a Jubilee BBQ on Saturday 16 June at 12:00 midday and you are welcome to join us.

Please look out for a leaflet popping through your letterbox soon.

Other dates are in the Village Diary in the centre pages

Please see our website for all other meetings **www.bethel-ec.com**

Have a blessed Jubilee.

Roydon and all your friends at Bethel Church

Godfrey Home Improvements

**Interior & Exterior
Decoration**

**General Property
Maintenance**

**Trustworthy and reliable
service**

Free Estimates

Contact: Pete Godfrey

Phone: 01245 400650

Mobile: 07730904377

E mail:

Peter2godfrey@btinternet.com



NEIGHBOURHOOD WATCH

Cold callers - Since the last News a number of elderly residents have experienced attempts by cold callers to steal or defraud them of money. Some neighbourly advice on this from NhW:



***It's OK to give the "cold shoulder" to cold callers
You owe them nothing!***

Remember these simple rules:

Never let a stranger in to your home – Always check ID
Beware of the hard sell – They only want your money!
Never feel pressured in to making a hurried decision
Make an appointment for a more convenient time – You're in control
If in doubt always ask a trusted neighbour for support
If you're a soft touch the news will get round – expect further visits

Prowlers - Secondly, there have been two recent reports of night time prowlers entering residents back gardens etc. Keep garden gates and rear doors locked and secure at night. Don't make it easy for criminals. Let us know if you have had problems and call 999 if you think someone is on your property that shouldn't be.

Using an Outdoor Key Safe? A timely warning! - A resident had their outside key safe broken into and house key stolen very recently. There are a number of Key Safes on the market, but the only one approved by the Police is Supra C500 Key Safe which has the highest level of security awarded to any key safe. Police approval was achieved through the 'Secured by Design' initiative.

New NhW logo - Lastly, East Hanningfield NhW have adopted an alternative NhW logo for use on signs etc. It replaces the previous logo (showing people with a Policeman). These social creatures

have captured the popular imagination because they maintain vigilance against predators and look out for other members of their group. We feel this at the heart of what NhW is about and better symbolises the message we want to convey.

Help make our village safer



NEIGHBOURHOOD WATCH

SIMPLES!

Next NhW Meeting: Wednesday 13th June, 8pm – Bethel Church Meeting Room: All local residents are welcome. It's usually attended by a police officer. If you have an issue or want to know more about East Hanningfield NhW or you have ideas about how to reduce local crime come along (or just receive emailed local NhW crime updates from me at geoff.h.dickman@gmail.com)

Geoff Dickman, East Hanningfield NhW. 403175 / 07968112179

NU-WELD

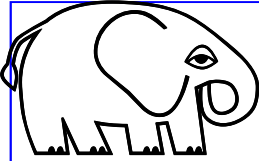
WELDING SUPPLIES

Lodge Farm, Old Church Road, East Hanningfield, Chelmsford, CM3 8BH

Suppliers of Welding Equipment, Consumables, Abrasives, PPE

WWW.NU-WELD.NET

01245 401 377



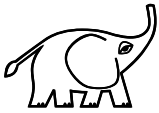
East Hanningfield Village Fete

Get rid of your clutter!

We need your unwanted items for the White Elephant Stall!

We're looking for toys, games, bric-a-brac, puzzles, jewellery, unwanted gifts, DVDs and CDs – in fact any small items that you think someone else could use.

If you have anything to contribute please phone Iris on 401460.



Sorry, we're unable to accept furniture or other large items, electrical goods, clothes or shoes.

Thank you for your support

**Is your computer getting you down?
Don't understand the jargon, know what you need or
where to start?**



- Computer setup, repairs and support
- Software installation and coaching
- Website design, setup and hosting

Call David on
01245 807484, 07867 535448, or email david@cyanmanagement.com

TOTS

Hanna's Tots has been very busy over the last few weeks with all the children playing together with the variety of toys. We alternate the toys each week so each week is different.

We are open in the holidays where older siblings are welcome to come along. As the weather improves we will venture outside with the bikes and trikes.

If you would like to come along for a chat and a cuppa whilst your little ones play, we meet in the Village Hall on a Friday morning, entrance via the back door. Sessions run from 9.30 – 11.30 for a small donation of £1.50. Please feel free to come and go as you wish during those times.

Rose and I would like to welcome Jenny on board who is helping along with the sessions which is much appreciated.

See you Friday!

Savannah Shankster 400979

PRESCHOOL

The children have been busy this term learning about different types of transport. They had a visit from a local taxi company and the children enjoyed exploring the taxi, so thank you to them for their time. We are also very pleased to announce that we have gained 5 stars for our food hygiene.

A huge thank you to all those who came and supported the Pamper evening, it was a great success raising money for the children of the preschool so thank you. We are now planning our celebrations for the Queen's Diamond Jubilee.

If your child is aged 2-4 years and you are interested in your child attending the preschool, spaces are starting to become limited and on certain days there is now a waiting list.

Please visit our website www.easthanningfieldpreschool.org.uk or call 07732951613 during session hours, Monday-Thursday 9:15-12.15. We look forward to hearing from you. If you have a child under 2 and wish to come and view the preschool please contact us and we can then place you on our waiting list.

Francesca Chapman
Secretary



VILLAGE FETE 2012

By the time the next edition of the news comes out, Saturday 8th September will be nearly upon us, and the Paralympic Games will be drawing to a close. So I'm taking this opportunity to encourage you all to come and support this year's fete, with its Olympic theme. We have some new attractions, such as clog dancers, archery, and our mini –Olympic race, along with plenty of old favourites. There will be a competition to find the best decorated hat inspired by the Olympic Games, with free entry for three age groups – under 8, 8-11 and 11-16 (on 1st September 2012).

Many people who ran stalls last time will be doing so again, and would be happy to have additional support, so could you consider giving an hour or two to lend a hand? Could you spare some time during the morning, or at the end of the fete, to help set up or clear up? The more helpers we have, the quicker it all gets done! The white elephant stall needs more good quality items, and we always welcome donations for the book stall and homemade cakes to sell. Help to make this fete a fitting end to a celebratory Summer!

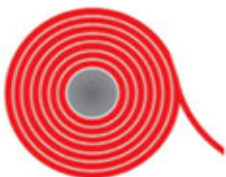
Jackie Feehan 400862
Jackie@fehan.vispa.com

BOOK SALE

The next sale of nearly new books is on Saturday 9th June in the upstairs meeting room at the village hall, from 10am to 12.30pm. There will be tea, coffee, cakes and biscuits, and the chance to have a leisurely browse and a chat. Our regular customers will be amazed to see our 'loft library' – books on shelves, which Rob Allen very kindly erected for us. As usual, the box for donations – preferably recent paperback fiction - will be in the village shop during the week prior to the sale. We now have a good stock of children's books and we welcome any younger readers who would like to look for a bargain. Proceeds to Hanna's Field Charity and All Saints' Church.



CARPETS & VINYL



- VIEW SAMPLES IN YOUR OWN HOME
- SUPPLY AND FITTING
- FREE QUOTATIONS
- LOCAL MAN—OVER 30 YEARS IN BUSINESS

CONTACT

NEIL POULSON

PHONE 01245 221316

MOBILE 07808 123676

Email: n.poulson@btinternet.com

Church & Hawes



**THINKING OF
MOVING?
CALL YOUR
LEADING LOCAL
AGENT A CALL?**



**ALL SOLD
SUBJECT TO CONTRACT
IN 2011 & 2012**

MORE REQUIRED

**NO SILLY GIMMICKS
JUST SALES**

CALL 01245 225777



PRIMARY SCHOOL

I am pleased to be able to contribute for the first time to the East Hanningfield News. I am the new Headteacher at East Hanningfield C of E Primary School, a position I took up in January 2012 after Mrs Findlay retired. I have very much enjoyed my time so far at the school and it has been great to meet so many parents, children and members of the local community in such a short space of time. I very much appreciated the welcome service, prayers and gifts that the Church gave me and the school last month.

East Hanningfield Primary school though small has huge potential and I very much look forward to leading it's future, one where it will be the centre of this community, a thriving environment where life-long learning is encouraged and fostered.

We have had a busy spring term with Class 3 visiting the Imperial War Museum in London and Class 1 attending Boydells farm in Wethersfield. There they had the opportunity to bottle feed lambs and milk cows. Fun was had by all! Many other children have taken part in out of school activities, including Football matches, Gym competitions as well as singing at the old people's home and attending the Infant Music Festival in Chelmsford. As well as fundraising for Sport Relief and our school charity Great Ormond Street Hospital.

The summer term sees us celebrating the Queen's Jubilee with our own street party as well as taking part in many sporting activities to celebrate the Olympics. This term we are also holding our Summer Fete, on **Friday 13th July at 5pm to 8pm**, based on an Olympic theme. There will be lots of stalls and activities to take part in and it would be lovely to see lots of you there.

Kerry Collins
Headteacher of East Hanningfield C of E Primary School

Contract Tilers

Specialist in all aspects of wall and floor tiling, both domestic and commercial.

Free estimates

Friendly, trustworthy and reliable local service.



Tel: 01245 400800
Fax: 01245 403066
Email: admin@contracttilers.co.uk
Website: www.contracttilers.co.uk

EAST HANNINGFIELD W.I.

Although we should not complain about so much rain in view of the fact that we have a hosepipe ban, I have to say my wellies and sou-wester are looking very faded. We have been very busy at the W.I. over the last two months. Our coffee morning was not well support which was a shame.

The W.I's of East Hanningfield, South Woodham, Woodham, Mill-wood together with South Hanningfield are a group who all come together once a year for our Spring Group Meeting. It gives us all an opportunity to share ideas and have a good natter. This year was our turn to be the host to the group which was chaired by our W.I Adviser Moira Wiltshire. 80 ladies attended and of course we all enjoyed a lovely supper and outstanding entertainment. Each W.I had contributed hand made or donated gifts for the selected charity of the evening which was Canine Partners. They were stunned at the quantity and quality of our gifts which they sell at craft fairs and villages fetes. Some of you will know our entertainer from his 4 year long part as Jean Valjean in 'Les Miserables' or Miss Saigon as well as many more shows or his association with the Windmill Pub. Phil Cavill was outstanding and certainly knocked the dust from our little hall's rafters. A superb evening was enjoyed by all.

We are now busy planning our annual Strawberry tea, 95th birthday celebration and of course the Queen's Jubilee. The W.I will also be running a produce stall at the Village Fete this year so if you have an abundance of fruit or vegetables we would love to hear from you and will be extremely grateful.

You can find the dates of our meetings in the magazines calendar section. Do come along you will be most welcome and I look forward to meeting you soon.

Flora Virgoe
President

HANNINGFIELD MOTOR CO

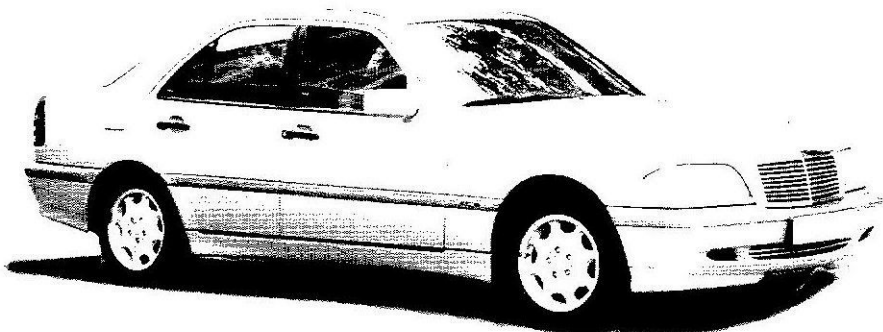


MOT CENTRE

www.hanningfieldmotorcompany.co.uk

SERVICING
DIAGNOSTICS
REPAIRS
RECOVERY

MOT
£40



TELEPHONE: 01245 400406

OPENING HOURS: MON-FRI 8.30AM TO 5.30PM

SATURDAY 9.00AM TO 1.00PM

Units 20+22, East Hanningfield Industrial Estate, Old Church Road, East Hanningfield, Essex CM3 8AB

NEWS FROM RHS GARDEN HYDE HALL

As an employee at Hyde Hall and a resident of East Hanningfield, I have always been amazed how few people know about the good work being done at the beautiful gardens just a stone's throw from our village. For those of you who don't know, Hyde Hall is one of four gardens owned by the Royal Horticultural Society. It was originally a working farm owned by Mr and Mrs Robinson who kindly bequeathed it to the RHS back in 1993. Since then it has grown and evolved into a beautiful hill top oasis surrounded by rolling farmland. As I walk up the hill to work each morning, I still find it hard to believe that I am in Essex.

There has been so much development within the garden over the past few years; with much more to come. We are presently expanding our much feted Dry Garden; this has received a lot of press attention of late, thanks to the hose pipe ban. We have put in a new lake and are in the process of completing two Courtyard Gardens. There are also plans afoot for a 60 acre perennial wildflower meadow and a Mediterranean Garden, complete with herbs, lavender and vines.

We also host events at Hyde Hall. Coming up this summer, we have a Jazz Evening and Theatre Evening; bring a picnic (and glass of something nice!) and be entertained in beautiful surroundings. We also have a talk by Jekka McVicar, flower arranging evenings, the Hyde Hall Flower Show in August and much, much more. If you would like to know more about events, joining the RHS or even volunteering with us, you can either call into the Visitor Centre and pick up a leaflet, visit the RHS website on www.rhs.org.uk/hydehall or give me a call on the number below.

Nicky Hall

01245 402003 (direct line at Hyde Hall)

EAST HANNINGFIELD ANNUAL ART EXHIBITION & SALE



East Hanningfield Village Hall Saturday

7th July 10am until 6pm

Entry including refreshments

£1.50 per adult - children free

Artists wishing to exhibit should contact Wendy on

01245 400797 by the end of June

Intercounty

**SPONSORS EAST HANNINGFIELD
ANNUAL ART EXHIBITION & SALE**