

EAST HANNINGFIELD NEWS

NO 194

SUMMER 2026



EDITOR'S NOTE

East Hanningfield News is published by East Hanningfield Parish Council and delivered, by volunteers, to all homes and many of the businesses in the Parish. Inclusion of articles or advertisements does not signify endorsement by the Parish Council.

COPY DATE FOR THE NEXT EDITION IS FRIDAY 14TH AUGUST

Earlier submission is welcome: later submission will be excluded! Please send electronic copy to editor@easthanningfield-pc.gov.uk. Please contact the Editor via the email above for information about advertising.

COVER PHOTOGRAPH

The Ugly Bugs Wingding is coming to **East Hanningfield Fete 2026**.

The Ugly Bugs Wingding is an entrancing short puppetry show for all the family, with a beautiful puppet theatre unfolding as musical big Ugly Bugs tell a tale inspired by the fantastical book the Butterflies Ball and Grasshoppers feast.

Adapting the 1806 William Roscoe poem 'The Butterflies Ball and the Grasshoppers Feast' the Ugly Bugs Wingding takes inspiration from a diorama pop-up book style, using 2D painted puppets similar to Wayang puppetry and concertina techniques in a fold out toy theatre-esque set.

Beautifully hand painted scenes, all made on re-purposed materials come alive with live music, verse and interaction throughout the show.

You can see a sample of the show at

www.youtube.com/watch?v=YtExZQY27MY

The appearance of the Ugly Bugs Wingding at East Hanningfield Fete 2026 is sponsored by East Hanningfield Parish Council

PARISH COUNCIL

The Parish Council held the Annual Village Meeting in the Village Hall on Tuesday May 12. The text of my report is printed below. Members of other Parish and Local Organisations also gave a summary of their activities over the last 12 months.

At the start of the meeting our new Essex County Councillor Paul Clark introduced himself. He had to leave early as he had a follow on meeting at Rettendon. Fellow Councillor for Woodham Ferrers, Chris Benn remained for the rest of the meeting. Sue Dobson our Chelmsford City Councillor gave an update on the approval plans for the Local Plan which includes their new ambitious housing targets for our village.

Jenny Mouser, Chair of Hanna's Field Charity which runs the Hall, Play Area and Car Park briefed the meeting on the achievements and fund raising. The committee is rapidly ageing and is urgently looking for volunteers prepared to step forward to help run this vital organisation.

Gil Gordon gave an update on the activities and the weekly services at All Saints Church. A generous donation means a new stained glass window is being installed. This church now share a vicar as one of four local churches which make up the Hill and Dale Diocese. Peter Cockrell reminded the meeting of the friendly informal welcome waiting at the Bethel Evangelical Church and the missionary activities overseas.

East Hanningfield PC Report to the Village Meeting May 12, 2026

The Tye

The improvements to the Tye reported last year, namely a relaid and widened path, village sign and refurbished telephone box are now fully complete.

The path has been extended past the newly completed Burniston house to link with Rettendon Road and Old Church Rd. The damaged grass has now recovered. The Telephone Box has new glass, has been repainted and stocked with books. This will be monitored by the

members of Hanna's Field Charity who run the regular Village Hall book sale. It is presently well stocked with children's books.

Hoppit Play Area

The Hoppit play area located in the Caulde Dennis Estate has been fully refreshed. All the old play equipment has been cleaned, painted and where needed repaired. A new ground level, fully accessible, roundabout has been installed with the help of a £10,000 grant from Essex Council. All the old safety surfaces have been replaced with a new continuous surface which extends over the concrete surrounds.

The usable area has been increased by removing surplus railings and two picnic tables installed. The grass has now fully regrown and it is now an attractive place for family picnics.

Hanna's Field Play Area

We are pleased that Hanna's Field Charity have started refurbishing and improving the play area on Hanna's Field. They should be congratulated in obtaining £37,500 in external grants towards this. The PC has also helped with an additional £16,000. I am sure Jenny Mouser will say more about this later.

Future Plans

The Parish council has been fortunate to obtain a grant of over £100,000 from the operators of the Sandon Brook solar farm. This is the solar farm that extends on either side of the A130 from Church Rd to the Water Works. New homes are required to contribute funds to the community. Solar Farms are not obliged to contribute anything. We are fortunate that this operator has a policy of making a voluntary contribution.

This is a significant amount of money and the PC is determined that it should buy something of lasting value. One possible proposal could be a "Multi Use Games Area" or MUGA on Hanna's Field. You may well have seen these large mesh cages on other playgrounds such as the Danbury "Blue Stadium". They can be used for such activities as five a side football, netball, basket ball or racket sports. This would benefit both youngsters and adults. But no definite decision has been made.

There may be better proposals.

Maintenance

We will continue with grass cutting but unfortunately will have to discontinue our hedge cutting. This is an Essex County responsibility and they have declined to delegate it to the Parish. We recognise that this is a safety issue as it forces pedestrians off the footpath into the road. We will continue to pursue this issue as approvals may change with the local government reorganisation.

Local Government Reorganisation.

The government has been encouraging more unitary authorities. For us it means that the services currently split between Chelmsford City Council and Essex Council will now be solely the responsibility of Chelmsford. In addition Chelmsford will be responsible for Brentwood and Maldon. Essex Council has recently changed from Conservative to Reform control. We will have to wait and see whether this delivers the savings and improved services promised.

New Housing Estates.

I reported on this at length in the Winter News Letter. To summarise. The Local Plan sets out the strategic framework for delivering all the new homes Chelmsford needs through to 2041. Increased government targets have resulted in East Hanningfield being allocated targets of nearly 400 new homes in four new estates and extensions to two existing Estates, Highfield Mead and Abbey Fields. This effectively doubles the size of the village.

This plan has now been approved at the Chelmsford City Policy Board April meeting and will go to the full board in June. The next step will be for this plan to be reviewed by an independent planning inspector. This will be a public meeting when the inspector will be determining that the plan is both sound and deliverable. The PC will make representation to this meeting.

With no new infrastructure, a similar large increase in housing in Rettendon and Bicknacre plus a massive increase in houses to the north of South Woodham Ferrers this will be both disruptive and challenging

for the Parish.

Councillor News

I announced in the Spring newsletter the resignation of Councillor Martyn Gard.

The Parish Council has a policy of a Chairman only serving for four years unless totally unavoidable. This is a good policy. It refreshes the council and avoids people and actions becoming entrenched.

It is now my time to resign as chairman and like Martyn, having just passed my 80th birthday, it is also a good time to resign as councillor and hand over to a younger generation.

Consequently we will have vacancies for two new councillors. There will be no need for an election. You can be co-opted. If you are interested please contact our clerk, Lucy.

Thank you for your support over the years.

Malcolm Thomas

CONTACT DETAILS - EAST HANNINGFIELD PARISH COUNCIL

Lucy White, CILCA, Parish Clerk & Responsible Financial Officer,

✉ Coronation Cottage, The Street, Woodham Ferrers, CM3 8RQ

☎ 07703170512 ✉ clerk@easthanningfield-pc.gov.uk

🌐 <https://easthanningfield-pc.gov.uk/>

CONTACT DETAILS FOR YOUR CITY COUNCILLORS

SUE DOBSON

✉ sue.dobson@chelmsford.gov.uk ✉ mark.taylor@chelmsford.gov.uk

☎ 01245 605908

☎ 01245 605923

✉ Civic Centre, Duke Street, Chelmsford, CM1 1JE

CONTACT DETAILS FOR YOUR COUNTY COUNCILLOR

PAUL H CLARK

✉ cllr.paul.clark@essex.gov.uk

✉ County Hall, Market Road, Chelmsford CM1 1QH

Would you like
to **SELL** your
home for **FREE**?*

bond
Residential

making the difference...



THIS COULD BE
YOU

Contact our **Chelmsford** office on
01245 500599 or **Danbury** office on
01245 222856 to book your free
market appraisal. **You could end up
being our lucky winner!**

*For full terms and conditions visit www.bondresidential.co.uk



SERVICE & MOT CENTRE

SERVICING
DIAGNOSTICS
REPAIRS
RECOVERY
AIR CONDITIONING
TYRES

MOT
CLASS 2, 4 & 7
AND
MOTORCYCLES



CALL US ON: 01245 400406

OR VISIT US AT:

HANNINGFIELDMOTORS.COM

13A OLD CHURCH ROAD INDUSTRIAL ESTATE, EAST
HANNINGFIELD, CHELMSFORD, ESSEX, CM3 8AB

EMAIL: hanningfieldmotors@gmail.com

OPENING HOURS: MON-FRI 8:30AM TO 5:30PM
SATURDAY 9AM TO 12PM



FOLLOW US ON FACEBOOK

HANNA'S FIELD CHARITY

Village Hall & Playing Fields

Time has quickly passed since the Spring newsletter, and thankfully the weather has now improved as we move into Summer.

Our last Book Sale on 9th May was in conjunction with the Table Top Sale in the sports hall. Unfortunately despite advertising in the Newsletter, on social media and with lots of banners throughout the village, this was not supported very well. It was a good day weather wise and there were a few other events locally, so this may have been the reason. The next book sale will be at the Village Fete on Sat. 4th July.

In the Spring newsletter I made villagers aware that this year is the 40th anniversary of the opening of the Village Hall in 1986, and asking if villagers would like to see an event to celebrate this occasion, but sadly I did not hear from anyone, so no event is being planned.

The Annual General Meeting was held on 28th April. This is the opportunity for villagers and regular users of our facilities to come along, ask any questions, to hear about what has been achieved over the last year and learn about future plans for improvements planned. Sadly again though, nobody came along to join the committee on this important occasion. The Hanna's Field Charity Committee are dedicated members who voluntarily give their time to meet just six times a year to ensure the correct running and maintenance of this important village facility. Many of our committee have been serving now for many years but age and health issues will obviously have an effect on how long they can continue, therefore it is vitally important for new younger people to come forward, who also can bring new ideas for the future.

Sadly we learnt recently that our Pre-school in the village will be closing at the end of July. This has always been a charity run Pre-school, initially started over 50 years ago as a Playschool in the Old Rectory, then moving into the old WI Hall and in 1986 into the new Village Hall Community Centre. Charity run Pre-schools really struggle when numbers get low as they have no access to any outside funding. Privately

run Pre-schools/Nurseries are able to attract outside funding from big companies to help them keep viable and expand. We are currently working with the Essex County Council's Early Years Alliance to investigate if there may be any private Pre-schools who may be interested in expanding into a new area. So it is a case of watch this space! Hanna's Field Charity would like to say a **'Big Thank You'** to all the staff & committees for running such an excellent facility in the village for so long. It is going to be very sadly missed.

Proceeds from last year's Fun Raising (Fete/Art Show) have all been put towards the refurbishment of the Play Area on the field, alongside applying for grants from a variety of sources to be able to carry out the refurbishment with new equipment, which I am pleased to report is currently in the process of being completed ready for opening in early June. Please see the report below from our Play Area Working Group.

Jenny Mouser - Chairperson



<https://e-voice.org.uk/hannasfield/>

To book the Village Hall/sports facilities or to check availability, please go to the Village Hall's website at the above address & click on 'Make a Booking' or email hannasfield@outlook.com.

Alternatively call the Booking Secretary on 07934270233 (before 8pm) and leave a message.

PLAY AREA REFURBISHMENT UPDATE

Residents will have noticed the work taking place on the Play Area during May. In the Spring EH News, we reported that we were still seeking the final funding needed to complete the project in time for the May half-term holiday. Although we missed our original Bank Holiday target, we were delighted that funding was secured, work began in May, and the much-loved Play Area should be fully open around the time this News is delivered.

In the last EH News, we promised to explain more about the project's cost, funding, and the work involved in making it happen. Many people will know Hanna's Field Charity (HFC) through its connection with the

Village Hall & Playing Fields. HFC is an independent charity set up to manage and develop these facilities for the benefit of everyone in the parish. It is run entirely by volunteer trustees — local people giving their time to support and improve these facilities. Although originally established by the Parish Council, HFC is self-funding and reports annually to the Charity Commission. Its income comes from hall & playing field rentals, solar panel energy exports, and fundraising activities. The Parish Council supports HFC for certain maintenance and with significant improvement projects such as this one.



Our Play Area project has taken more than 18 months to complete. It began with a village survey to identify priorities, followed by consultations with suppliers, obtaining quotations, securing grants, and project planning. We are extremely grateful to the dedicated volunteers who gave their time to organise the project, liaise with contractors, and apply for funding and in particular two residents Amanda Plummer and Shona Matheson.

Thanks to their efforts (and those trustees Fiona Ward and Mike Plumridge who worked with them), we have been able to replace ageing play equipment that no longer met current safety standards, includ-

ing the Fireman's Pole and Tyre Swing, Toddler Swings, Slide, and the Burma Chain Bridge, Balance beams, and Stepping logs. These have been replaced with new equipment including:

A Multi Play Tower with Fireman's Pole and Slide
Cradle Swing—Cone Climber - Nest Swing—Toddler Fun Trail
Five-piece Wooden Trim Trail—New safety surfacing where required.

We know how important and well-used the Play Area is for young families in the village, so it is especially pleasing to complete the project during the Village Hall's 40th anniversary year.

The installation of this ROSPA-approved play equipment is not cheap. The total project cost came to £62,400. Through village events such as the annual Fete, Art Show, and Book Sales, HFC raised £10,000 over two years, enabling us to seek external funding support.

The Parish Council generously agreed to match HFC's £10,000 contribution and later provided an additional £6,000, bringing local funding to £26,000. This support was vital in helping us secure a further £36,744 in grants from external funders:

- Tom Amos Charity — £6,744
- Bernard Sunley Foundation — £5,000
- National Lottery Awards for All — £16,000
- Fowler Smith & Jones Trust — £1,500
- Garfield Weston Foundation — £7,500
- Ford Motor Company Fund — (£3,000 decision pending)

We will finish off the project with a plaque at the Play Area entrance to acknowledge the generosity of the funders and Parish Council whose support helped HFC secure the future of this important community facility for future generations.

Finally, if you are interested in the Play Area project or would like to know more about Hanna's Field Charity, we would love to hear from you. The Village Hall and Playing Fields can only continue to thrive with the support, interest, and involvement of people in our community.

Play Area Working Group
HannasField@icloud.com

VILLAGE EVENTS COMMITTEE

Next event Village Fete – Saturday 4 July 12:00 – 16:00

The Events Committee are in the process of organising the fete. We are grateful to the event sponsors D Chennells Ltd Highlands Farm and J Gard and Sons Ltd.

There will be a full programme of entertainment, including performances from the children at pre-school and primary school. We are excited to have music from The Black Jax and new brass and woodwind band called Allegretto Music Ensemble.

We have events inside and outside – line dancing, Bounce (mini trampolines), singing princesses and children's entertainment from Ugly Bugs Wing Ding.

Historic Motor Works will be bringing a selection of classic cars; British, European and American sports cars, grand tourers and saloons from the 1950's to the 1980's.

Yammas Bar will be supporting us with refreshing summer drinks, In the Mood for Food and The Hanningfield Treat Company will be with us and new for this year Firepit Pizza too.

There will be inflatables, teacup rides, classic games including the stocks, hook a duck, bagatelle, skittles. The steam engine will be doing rides around the field. Weather permitting there will be the ever-popular fun dog show.

Please buy Grand Draw tickets in advance, ten have been delivered with this News and more will be available in the Shop, they will be available on the day too – with the Grand Draw at the end of the fete. We have some fantastic prizes kindly donated by generous local businesses – we are grateful for your support.

Keep an eye on the Village Facebook page for information and updates. We look forward to seeing as many people as possible to help raise money for Hannas Field Charity and All Saints Church.

Thanks to the volunteers who have already been in touch pledging support on the day. If any other people would like to volunteer to help with any village events, please email.

Melanie.mavers@gmail.com

All
equipment
provided

WWW.THEPHOENIX-MOVEMENT.COM



EMPOWER | Beginners Hatha Yoga

Tuesday 10am @The Yurt, Meadow Croft Garden Centre
Wednesday 625pm @East Hanningfield Village Hall
Friday 1030am @Galleywood Heritage Centre



THE PHOENIX FLOW | Vinyasa Power Yoga

Wednesday 730pm @East hanningfield Village Hall
Friday 930am @Galleywood Heritage Centre



CONNECT | Baby Massage & Reflexology

Tuesday 1130am @The Yurt, Meadow Croft Garden Centre



THE PHOENIX MINIS | Developmental Sensory Exploration

Tuesday 1245pm @The Yurt, Meadow Croft Garden Centre



RECONNECT | Soundbath

Friday 630-8pm @Galleywood Heritage Centre (once a month)

£10 Block
or £12
PAYG

LIMITED SPACES AVAILABLE - PRE BOOKING REQUIRED



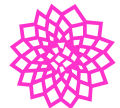
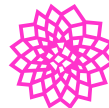
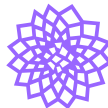
hello@thephoenix-movement.com



thephoenixmovement.essex



07488564605



VILLAGE DIARY

JUNE



- Mon 1 **EH Primary Academy closed for inset day**
- Tue 2 **BROWN BIN, FOOD WASTE, PLASTICS & CARTONS, PAPER COLLECTIONS**
- Sun 7 9am **HOLY COMMUNION (BCP)** with Rev Jacqui at All Saints' Church. See easthanningfield-church.chessck.co.uk for further details of services.
10.45am **FAMILY SERVICE** at Bethel Church
- Tue 9 **BLACK BIN, FOOD WASTE, GREEN BOX, CARD SACK COLLECTIONS**
- Sun 14 10am **MORNING WORSHIP** with a healing theme – Malcolm and Helen Lyall tbc at All Saints' Church
10.45am **FAMILY SERVICE** at Bethel Church
- Tue 16 **BROWN BIN, FOOD WASTE, PLASTICS & CARTONS, PAPER COLLECTIONS**
1.30-2pm **MOBILE LIBRARY** at the Folly Bistro
- Wed 17 1.30-4.30pm **WI MEETING** in the 1st floor meeting room at the Village Hall
- Sun 21 10am **HOLY COMMUNION** with refreshments afterwards at All Saints' Church
10.45am **FAMILY SERVICE** at Bethel Church
- Tue 23 **BLACK BIN, FOOD WASTE, GREEN BOX, CARD SACK COLLECTIONS**
- Wed 24 8-9.45pm **PARISH COUNCIL MEETING** in the 1st floor meeting room at the Village Hall.
- Sun 28 10am **MORNING WORSHIP** with Lesley Watkin to lead and preach at All Saints' Church.
10.45am **FAMILY SERVICE** at Bethel Church
- Tue 30 **BROWN BIN, FOOD WASTE, PLASTICS & CARTONS, PAPER COLLECTIONS**



PULL ME OUT & PIN ME UP

Sat 4 12noon-4pm
VILLAGE FETE
 at Hanna's Field.
 Also the Preloved
 Booksale



Sun 5 9am **HOLY COMMUNION** (BCP) with Rev Jacqui at All Saints' Church. See easthanningfield-church.chessck.co.uk for further details of services.
 10.45am **FAMILY SERVICE** at Bethel Church

Tue 7 **BLACK BIN, FOOD WASTE, GREEN BOX, CARD SACK COLLECTIONS**

1.30-2pm **MOBILE LIBRARY** at the Folly Bistro

Sun 12 10am **MORNING WORSHIP** with a healing theme with Fiona Selden at All Saints' Church.
 10.45am **FAMILY SERVICE** at Bethel Church

Tue 14 **BROWN BIN, FOOD WASTE, PLASTICS & CARTONS, PAPER COLLECTIONS**

Wed 15 1.30-4.30pm **WI MEETING** in the 1st floor meeting room at the Village Hall

Fri 17 **LAST DAY OF SCHOOL – EH Primary Academy.**
Sandon School closes at 12.45pm

Sun 19 10am **MORNING WORSHIP** (not Holy Communion) and baptism of Archie Sinfield Oliver at All Saints' Church
 10.45am **FAMILY SERVICE** at Bethel Church

Tue 21 **BLACK BIN, FOOD WASTE, GREEN BOX, CARD SACK COLLECTIONS**

Thu 23 10am-12noon
PLAY IN THE PARK
 at Hanna's Field.
 Remember to wear a sun hat & sun cream and bring a drink. To book a place visit the Chelmsford City Council website and search for Play in the Park.



- Sun 26 10am **MORNING WORSHIP** with Val & John Woodrow at All Saints' Church.
10.45am **FAMILY SERVICE** at Bethel Church
- Tue 28 **BROWN BIN, FOOD WASTE, PLASTICS & CARTONS, PAPER COLLECTIONS**
1.30-2pm **MOBILE LIBRARY** at the Folly Bistro
- Wed 29 8-9.45pm **PARISH COUNCIL MEETING** in the 1st floor meeting room at the Village Hall.

AUGUST



- Sun 2 9am **HOLY COMMUNION (BCP)** with Rev Jacqui at All Saints' Church. See easthanningfieldchurch.chessck.co.uk for further details of services.
10.45am **FAMILY SERVICE** at Bethel Church
- Tue 4 **BLACK BIN, FOOD WASTE, GREEN BOX, CARD SACK**
- Sun 9 10am **MORNING WORSHIP** with a healing theme with Fiona Selden at All Saints' Church.
10.45am **FAMILY SERVICE** at Bethel Church
- Tue 11 **BROWN BIN, FOOD WASTE, PLASTICS & CARTONS, PAPER COLLECTIONS**
- Sun 16 9am **HOLY COMMUNION** with Rev Jacqui at All Saints' Ch
10.45am **FAMILY SERVICE** at Bethel Church
- Tue 18 **BLACK BIN, FOOD WASTE, GREEN BOX, CARD SACK**
1.30-2pm **MOBILE LIBRARY** at the Folly Bistro
- Wed 19 1.30-4.30pm **WI MEETING** in the 1st floor meeting room at the Village Hall
10am-12noon **PLAY IN THE PARK** including a Mobile Zoo at Hanna's Field.
- Sun 23 10am **MORNING WORSHIP** with Lesley Watkin to lead and preach at All Saints' Church.
10.45am **FAMILY SERVICE** at Bethel Church
- Tue 25 **BROWN BIN, FOOD WASTE, PLASTICS & CARTONS, PAPER COLLECTIONS**
- Wed 26 8-9.45pm **PARISH COUNCIL MEETING** in the 1st floor meeting room at the Village Hall.
- Sun 30 10am **MATINS** with Fiona Ward & Gil Gordon at All Saints' Ch
10.45am **FAMILY SERVICE** at Bethel Church
- Mon 31 **BANK HOLIDAY** – Shop and Post Office closed.

East Hanningfield Village Store

The Village Hall, East Hanningfield, Essex, CM3 8AE



**CLOSED BANK HOLIDAY
MONDAY
31 AUGUST**

Village Store Services Include:
Newspapers, Grocery, Off-licence, Lottery,
Greeting cards, Photo copy & Coffee machine

Post office Services:

MoneyGram, Foreign currency, Car tax, One4all gift cards,
Cash withdrawals, Cash deposit, Cheque deposit,
Banking Service available for all UK banks



Shop opening hours:
Mon- Fri: 8am-6pm
Saturday: 8am-1pm
Sunday: closed



Post Office opening hours:
Mon-Fri: 9am-5:30pm
Saturday: 9am-12:30pm
Sunday: Closed



ALL SAINTS' CHURCH

What Is the Church for in East Hanningfield?

It is an interesting question to ask in any village: what is the church actually *for*?

People might answer in different ways. Some may think first of baptisms and weddings, of Remembrance Sunday or Christmas services. Others may simply be grateful that the church is a peaceful place at the heart of the village, standing faithfully through changing times and generations. Perhaps many people, even those who don't come to services, still feel that the church matters, though it can be difficult to explain why.

Over recent months, there has been a great deal of interest in the old churchyard. Long after the old church itself was destroyed by fire more than 140 years ago, the old churchyard speaks of the lives and stories that shaped this village. It reminds us that the church is not only a building or an organisation that puts on services, but a community of people — people who were loved and valued, prayed for, and who found comfort and hope in their faith.

This past Easter was a wonderful example of the church's value to the community. We welcomed the whole primary school into the church for the end-of-term Easter service, having explored creative ways of praying with palm leaves, paper chains, pipe cleaners, and, of course, the cross. We used the pipe cleaners to make little people - a reminder that the church is not just the building, but the people themselves who share and care for one another. There are some wonderful pictures on our Facebook page.

One of the children's prayers was thoughtful, funny, and really honest: *"Dear God, thank you for my cats and family. I love you God. You are the best. Also, you made the world; that must have been a lot of work. Amen."*

Our Easter Sunday service was another example of the church being valued by the community, with so many people coming to the service led by Bishop Adam of Bradwell, a wonderful time of celebration in the

village.

Maybe part of the answer to what the church is for is experiencing moments of connection, times to be still, to reflect, or to find peace in a place shaped by centuries of prayer, memories, and community life. There does seem to be a growing desire among many people for something deeper than the busyness and uncertainty of everyday life - a longing for meaning, community, and spiritual connection. More people are beginning to explore faith and the Christian way of life that has been shared across generations and around the world for over 2000 years. If you fall into that category, I'd love to speak with you.

So perhaps the question is not only what the church is for, but what the church can become for this generation in East Hanningfield?

As a church, we would like not simply to preserve what already exists, but to grow: in faith, in welcome, in service, and in what we can offer to the community. We would genuinely value hearing people's hopes and ideas. What would you love to see more of in village life? How could the church better support the community, create opportunities for connection, or offer spaces of peace, friendship, and hope? Every generation helps shape the future of a village church. Perhaps now is the time for new ideas, new energy, and new people to help write the next chapter of the church's story in East Hanningfield. *As it says in the Bible, "For we are co-workers in God's service; you are God's field, God's building" (1 Corinthians 3.9).*

Whether you come to church regularly, occasionally, or simply pass by, or wander through the churchyard, you are always welcome - and we would love to hear what you think the church is for in East Hanningfield.

Every blessing,
Rev'd Jacqui

☎ 01245 961979

✉ revJacquiking@gmail.com

🌐 <https://easthanningfieldchurch.chessck.co.uk/>



E H WOMEN'S INSTITUTE

The first thing I need to do is apologise for the absence of a WI report in the last Village Magazine. It was entirely my fault, I did not send anything to Karen. My only excuse is my daughter became ill and needed her Mum to go and help so off I went leaving the report at home. By the time I returned with daughter and dog in tow I had missed the deadline. From then on Life went a bit pear shaped as it does when you really don't need it: still, fingers crossed, all is back on track.

This does not mean you are not going to hear about what we have been up to in those missing months, so here we go.

I believe I need to go back to December 2025, which seems a long time ago, so I will start there. We finished 2025 by going out for a Christmas meal. It was a lovely way to finish our year. We enjoyed a lovely meal at The Six Bells in Boreham. We had the chance to chat and catch up with each other, a really good start to Christmas.

2026 came along far too soon and we were back in the Village Hall discussing the resolutions as per instructions from National. After discussion of the five short listed, we voted to get them in order of preference. We had a long discussion and came to the decision we had either tried them before of they were already on the Government's Agenda. We decided to abstain and get on with the serious business of the day—Tea, Cake and Games.

In February, three sisters came to show us their collection of embroidery. It was beautiful. They each chatted in turn and told us how they had caught the sewing bug. We then spent some looking at their work a bit closer. The sisters answered questions and gave tips on how they achieved such a perfect finish.

By March we were ready for something a bit more controversial, A Talk on the Mitford Sisters fitted the Bill, so it was a pleasure to listen to Mr. Ian Kirby tell us about their lives. They were outrageous. All I can say is I am truly thankful I was not Mrs. Mitford. She had six daughters; one Diana had a long affair with Oswald Mosely. They eventually married in secret with Hitler and Goebbels as guests. Unity went to Germany and became fascinated with Hitler, she followed him around, I

guess today it would be described as stalking. However, they became friends and he bought her a flat, plus a pistol to defend herself with. Unfortunately she used it on herself. Unity was taken to hospital in Switzerland, until she was well enough and the War situation made it possible for her to return home. All expenses were paid by Hitler. Unfortunately, she never recovered. Jessica became a communist and went to fight in the Spanish Civil War. Nancy became a writer. Pamela suffered with polio as a child, but as an adult she took herself to Ireland and ran a stud farm. The leaves Deborah, who married the second son of the Duke of Devonshire and eventually became the chateleine of Chatsworth House.

Then in April we had one of our favourite speakers, Mr. Bryan Thurlow. He always dresses in character and acts out the story he tells. Usually, it is an incident in the past. This time it was about a haunted Rectory. Set in the early Victorian era it was a typical Gothic style story. Supposedly based on true incidents, he managed to create an eerie atmosphere. Not a tale to hear on a cold dark night but on a spring afternoon it was fine.

In May it was our AGM. We refresh our memories on the talks and activities we have enjoyed through the year and are updated on our financial position. The members are then asked to choose a Committee for the coming year. Once the Business is finished it is afternoon tea and perhaps a quiz.

Well I guess now, like me, you will need to spend time in the garden trying to get the better of the weeds that seem to grow at an incredible rate. The good thing is it does help to keep us fit and hopefully lose a bit of weight put on by all those cakes I mentioned.

Enjoy your Summer, until next time.

Marlene,
President East Hanningfield W.I.



THE 'RESIDENTS' OF THE OLD GRAVEYARD

In 1996 the Essex Society for Family History used specialist skills and equipment to read the inscriptions on the headstones, and alongside information from burial records a certain amount of detail on the 76 marked sites has been gathered.

Sadly, most the headstones have now deteriorated more severely and are unreadable, luckily, we have the compiled information, some details:

Longest lifespans:

Plot 66 - **Martha Smith** – died October 1846, aged 85. Wife of John Smith who died November 1827, aged 74.

Plot 70 - **Thomas Suckling** – died March 1889, aged 85. He is buried with his wife Jemima who died June 1870, aged 70.

Shortest lifespan:

Plot 68 - **Benjamin Grave** – died October 1844 – an infant.

Plot 51 - **Thomas and Charlotte Riley** – no dates – aged 5 months.

Sadly, there are several family grave sites that include multiple infants, or children.

'Residency periods'

Longest – Plot position unknown, but burial records show – **John Peachye** – June 1569.

Most current – Plot 28 - **Rev Samuel Buxton Smyth** – 7 August 1812 – 18th August 1896.

Rev Smyth shares his final resting place with other family members

Caroline Smyth, died 28th October 1866

Rev Samuel Buxton Smyth, 20th December – 6th January 1872

Septimus Buxton Smyth, died 1st June 1877.

Many of the epitaphs of the time were very poetic and often poignant, for example:

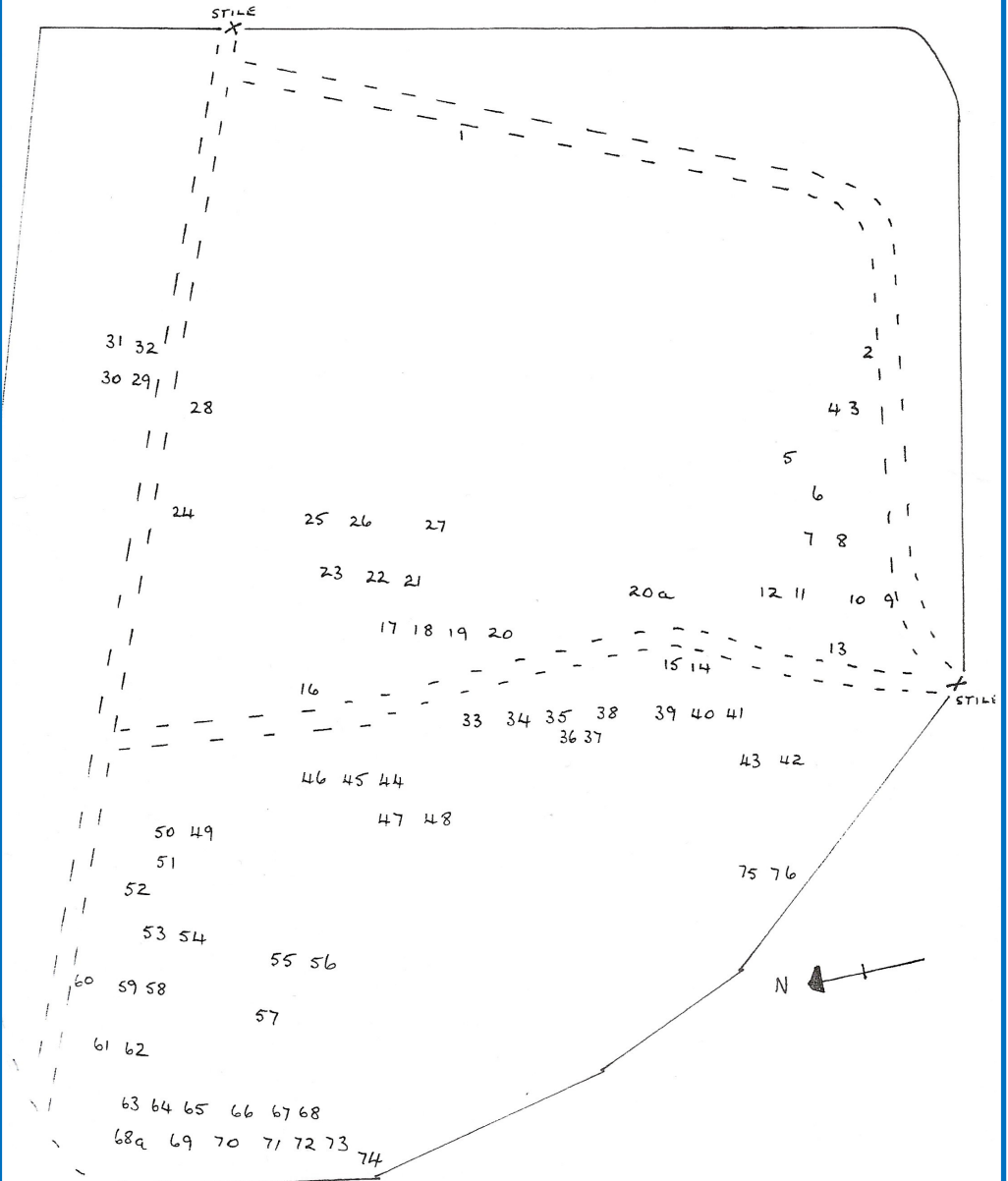
Plot 17 – **Edward Lungley** – died September 1803, aged 21:

'When blooming youth and beauty is most brave, Death plucks us up plants us in grave, Take care young folk your precious time to spend, Your time is short and quickly at an end.'

Plot 38 – **James Robinson** – died September 1791, aged 64:

'Adieu vain world I've seen enough of thee, And careless am of what

'OLD' ALL SAINTS
EAST HANNINGFIELD



Not to Scale

thou saith to me, Thy smiles I court not, nor thy frowns I fear, My time is past my head lies quiet here, What errors seen in me take care to shun, Look but at home enough is to be done.

It would be lovely to try and learn a little more about the 76 souls known to rest here, although there are likely more that are unmarked or unregistered. It would be great if anyone has any information or research skills they wish to share.

Clare Liddiard – clare.cl13@googlemail.com

Edit: In my previous article I stated that fresco's (murals) were discovered in 1940. New information has come to light from an article published by Essex Archaeological Society in 1926 in 'Wall paintings in Essex Churches' – '*...in the report of the Annual general meeting held on 29th July, 1884, when thanks were given to Mr E. Durrant for exhibiting mural photographs lately brought to light by the fire at Hanningfield church;...*'



Keeping the county warm



Fuel Services

Contact BFS for prompt delivery of your domestic heating oil direct from our local Danbury Fuel Services depot. You'll find no better service, no better value.

T 01245 425251 www.bfsfuelservices.uk

**REPAIR IT
/// SMART**

WWW.REPAIRITSMART.CO.UK

**01245 475100
07778 112770**



Open: Mon - Fri 7.30am - 5.00pm Saturday 7.30am-12.00pm.

ACCIDENT REPAIR CENTRE

Unit 38, Highlands Farm, Southend Road, Rettendon, Chelmsford, Essex, CM3 8EB

Whatever the damage we can fix it with a quick
turn-around at a competitive price!

- ✓ Insurance Repairs
- ✓ Non Fault Accident Specialist
- ✓ Bumper Scuffs or Cracks
- ✓ Smart Repairs
- ✓ Alloy Wheel Refurbishment
- ✓ Panel Replacement
- ✓ Scratches & Vandal Damage
- ✓ Paintless Dent Removal
- ✓ Fleet & Lease Return Repairs
- ✓ Accident Recovery and Courtesy Cars
- ✓ Full Valet Service
- ✓ Machine Polish & Detailing
- ✓ Mobile Estimates: We can come to you
- ✓ Over 27 years in the industry



**STATE OF THE ART SPRAY
BOOTH AND EQUIPMENT**

**INSURANCE CLAIM?
GET £150 OFF YOUR
INSURANCE EXCESS**

INFO@REPAIRITSMART.CO.UK

PRIMARY ACADEMY

The last few months at East Hanningfield Church of England Primary Academy have been filled with many exciting learning opportunities and special events across the school. Children have enjoyed a wide range of activities that have enriched their learning and created lasting memories.

One of the most memorable events was our whole school 'Easter Prayer Space day'. There were four different Easter themed activities and a service at All Saints Church, which the children thoroughly enjoyed. Mrs Trigg-Hayes and Reverend Jacqui taught the children about friendship and the events of The Last Supper. They each made a special person out of a pipe cleaner and shared bread and thought about the events of the Easter story. Mrs Woollard taught the children about Palm Sunday and being thankful.



The children then wrote prayers on palm leaves for the things which they were thankful for. Mrs Cottey taught the children about carrying the cross and the children wrote any worries they had onto a paper cross to form part of a larger display. Mr Forster taught the children about Jesus' trial being unfair. The children were encouraged to think of things that they thought were unfair and write these onto a strip of paper. These strips were then made into paper chains for part of our display. These activities were followed by a special Easter Service in All Saints Church. Every class shared something special: Robins treated us to a spring song, Doves confidently retold the events of The Easter Story, Kingfishers wowed us with a performance of Lord of the Dance (accompanied by Mr Forster on the guitar!) and Owls encouraged us to reflect through the power of their poems and prayers. It was a truly wonderful morning and we are very thankful to Reverend Jacqui for her time in working with us to plan and lead this special event.

Another memorable experience was welcoming eggs into school and watching chicks hatch before the children's eyes. This valuable learning opportunity captured the curiosity and enthusiasm of pupils across all year groups. Children observed the life cycle of the chick first-hand, deepening their understanding of biological processes and developing a strong sense of responsibility and care. The excitement generated by this initiative has been shared widely and will be remembered by many children for years to come. The excitement around the school was truly wonderful to see.

We were also delighted with the success of our Summer Inflatables Event, organised by our fantastic PTA - 'Friends'. The event was very well attended and provided a fun-filled afternoon for children and families, helping to raise valuable funds



for the school. We are extremely grateful to the PTA and all the volunteers who helped make the event such a success.

As we approach the end of the school year, we are continuing to support our Year 6 pupils as they prepare for their transition to secondary school, while also looking forward to welcoming our new EYFS children and families as they begin their journey with us. It is an exciting time for everyone, and we look forward to the opportunities the new term will bring.

Kind regards,
Mrs Stainsbury,
Head of School

☎ 01245 400772

🌐 <http://www.easthanningfield.essex.sch.uk>




novuscare

Care in the Heart of your Own Home

Are you or an elderly loved one looking for extra care and support at home in **East Hanningfield** or the surrounding areas? Then our local carers are here to help.

Novus Care is regulated by the Care Quality Commission and can provide a qualified carer to support your loved one in their own home from just **30 mins per week to full-time live in care.**

For more information or to arrange a free assessment, please contact the Novus Care Team on:

T: 01268 960286 | E: hello@novus-care.com | W: novus-care.com



J Gard & Sons Ltd

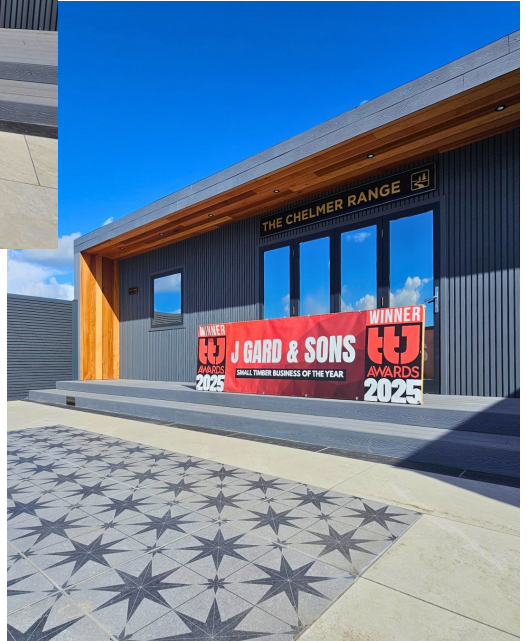
Timber Specialists Since 1919

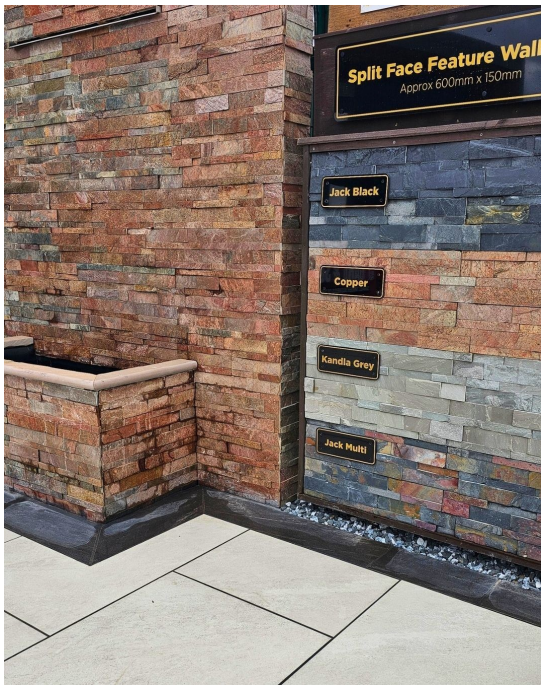


As many of you will know, Easter is always one of our busiest times of year here at J Gard & Sons and this year has been no exception! It's been great to see so many familiar faces (and plenty of new ones too) popping into the yard as everyone starts getting their gardens ready for the warmer months ahead.

Behind the scenes, it's been even busier, as we've been putting the final touches to something we're really excited about - our brand-new landscaping display area!

Rather than a few small samples on a rack, we've created a full walk-around space right here at the yard, where you can see materials properly installed and styled just as they would be in a real garden. From composite decking and porcelain paving to cladding and fencing, it's all there to help bring ideas to life.





We know how tricky it can be choosing materials from photos online, so this space has been designed to make things easier - you can see colours in natural light, feel the textures, and get a real sense of how everything works together.

Whether you're planning a small patio update or a full garden makeover, it's well worth popping in for a look, especially as we're right on the doorstep! Even if you're just after a bit of inspiration, you're always welcome to have a wander round.

We're really proud of how it's come together and look forward to sharing it with you all over the coming months.

J Gard & Sons Ltd
 The Timber Mill, The Tye,
 East Hanningfield,
 01245 400181
www.gards.co.uk



AWARDS 2025
 19 SEPTEMBER 2025 | HILTON LONDON BANKSIDE

WINNER
J GARD & SONS
 SMALL TIMBER BUSINESS OF THE YEAR

SCARECROW COMPETITION



Fill the village with fun creations... they don't have to be 'people', they can be animals or cartoon/gaming characters.

You don't have to use straw, you can pack with thin plastic or paper. You don't have to use clothes, you can use scrap material.

Display your creation outside your home 14th – 24th August.

Let your imagination run wild and possibly win a cash prize! *Kindly donated by Gards.*



Entry forms will be available early August on line or from the Post Office.

Entry for adults - £5.

Children under 11 own creations can enter free – entry prize for everyone.

Voting forms will be available early August too and cost a £1, forms online or at the Post Office.

Money raised will be donated to All Saints Church.

Clare – clare.cl13@googlemail.com

Illustration by [remapstudio](#) on [Unsplash](#)