

***EAST
HANNINGFIELD
NEWS***

*Spring 2012
No. 139*



FROM THE ACTING EDITOR

East Hanningfield News is published by East Hanningfield Parish Council and delivered by volunteers free to all homes in the parish. Inclusion of articles or advertisements does not signify endorsement by the Parish Council.



Copy date for the next edition is Saturday, 12th. May at the latest!

for publication on 1st. June. Please continue to send articles and advertisements to me at 2 Clinton Close or karen.plumridge@btinternet.com .

Please note that it is sometimes necessary to edit articles, for example, to fit them in to the space available, or because they duplicate what is written elsewhere. This will be done without reference to the originator of the article.

This and past issues can be seen at www.essexinfo.net/easthanningfieldparishcouncil/east-hanningfield-news/

COVER PICTURE

This an opportunity for a reminder that hedgehogs will be coming out of hibernation very hungry. You can buy hedgehog food, yes really! But dog or cat food will do very well. What they shouldn't have is bread and milk, because they don't have the ability to digest it which leads to diarrhoea and so to loss of weight and dehydration.

PARISH COUNCIL



Martyn Gard

As anticipated in the previous News, the empty seat on the Parish Council has been filled by co-option. The new Councillor is Martyn Gard, who lives and works in the village. Martyn moved his business to East Hanringfield in December 2005 and has lived here since March, 2006. Before joining the Council he was already involved in local life having participated in the production of the Parish Plan and by serving on the school's Board of Governors of which he is currently Chairman.

You cannot fail to have noticed that we are to expect changes to the organisation of the National Health Service. The group which from next year will be running NHS services across mid Essex is seeking volunteers to join its Residents' Panel. The GP-led Mid Essex Clinical Commissioning Group (MECCG) will take over the role of NHS North Essex in April 2013 and wants to involve local people in shaping future health services by becoming a member of a Residents' Panel. Panel members can choose to be sent information with the option to make comments on health service decisions in their early proposal stages, take part in workshop sessions to help redesign local health services or become a local agent to communicate health information and gather feedback from local communities. For further information, email public.involvement@nhs.net, telephone 459395, or go to www.midessex.nhs.uk/lts-Your-NHS/Have-your-say/

A major workshop for people who would like to input into the development of cardiovascular services across Essex is to take place at the Regiment Way Golf Centre, on 22 March from 10am-4pm. The event is being organised by the Essex Cardiac and Stroke Network and will look at how patients and the public can help shape services. One in three people die of cardiovascular illnesses, making it the

UK's biggest killer. People wishing to attend **must book** by telephoning 01206 288271. Refreshments and lunch will be provided. There will be ample free parking at the venue and a wheelchair-accessible shuttle service from the nearby Chelmer Valley Park and Ride.

At the time of writing the Community Speed Watch Team's gun was away for its annual recalibration. Once it has been returned the team will be out and about again! The police provide feedback on the outcomes of the speed watch activity in Essex. In January, which is not a busy month for the teams because of the weather, the Teams across the county carried out 63 watches, from these 538 letters were sent to first time offenders and 23 to second time offenders. When the speed-watch teams are accompanied by a police officer speeding drivers may receive a fine. In January being caught by speed watch teams resulted in 5 drivers being sent to court, 29 receiving fixed penalty notices, 1 receiving a verbal warning and 24 being sent to speed awareness training. So, the idea that Community Speed watch can be ignored because it has no teeth no longer applies.



This year's Village Tidy has been brought forward from the usual May Saturday to April. If you would like to join in please meet at the Village Hall car park at **9am on Saturday, 28th. April**. Sacks, litter pickers, gloves and hi-vis jackets will be provided. There are a few villagers who have adopted lengths of verge to keep clear of litter. If you would like to do this, I can provide you with a supply of sacks and the loan of a litter picker to make the job easier.



The dates for Play-in the Park during the Easter & Summer holidays have been requested, but not yet confirmed. Please keep an eye open for the posters nearer the time, and for a note from school if your child attends locally.

PC held its Budget Meeting in November when the Precept was set. The Precept is the amount PC asks Chelmsford Borough Council to collect on its behalf via the council tax. It was a very difficult exercise, but PC managed to keep the rise down to 65p, so you should notice no change on your PC tax bill this year.

A welcome additional source of income is what is called Section 106 monies, which comes from a levy by the Borough Council on development. The open spaces element of this levy can come to the parish if the parish council has previously provided the Borough Council with a list of projects. This PC did this some time ago and is now reaping the reward because £5,658.52 is due to be forwarded to PC's bank account. PC has identified the projects to benefit in consultation with Hanna's Field Charity.

The Parish Council hopes to get the village design statement process underway shortly. If you are interested in taking part and haven't registered interest, please get in touch

Parish Council Meetings continue to be held at 8pm on the **fourth** Thursday of each month in the first floor meeting room at the Village Hall. The use of an overhead projector means that everyone present can see what plans are being discussed. Agenda and Minutes of meetings can be found on the website, and the Agenda appear on the Council's noticeboards three days before each meeting.

Karen Plumridge,
Clerk to the Council
400628 karen.plumridge@btinternet.com
www.essexinfo.net/easthanningfieldparishcouncil

HANNINGFIELD MOTOR CO



M.A.A.

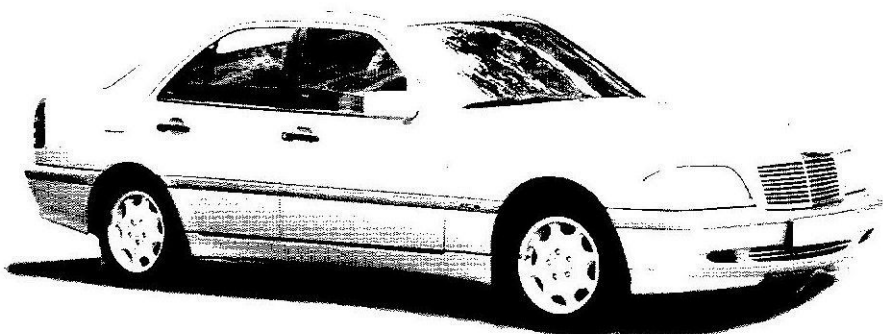
MOT CENTRE



www.hanningfieldmotorcompany.co.uk

**SERVICING
DIAGNOSTICS
REPAIRS
RECOVERY**

**MOT
£40**



TELEPHONE: 01245 400406

OPENING HOURS: MON-FRI 8.30AM TO 5.30PM

SATURDAY 9.00AM TO 1.00PM

Units 20+22, East Hanningfield Industrial Estate, Old Church Road, East Hanningfield, Essex CM3 8AB

BOROUGH COUNCILLOR'S MESSAGE

At a recent, very informative meeting at Hylands House a planning group of consultants engaged by Chelmsford, Maldon and Brentwood Councils were looking at the future for this whole area and made some points which I would like to share. Firstly that the number of people living in the average house is dropping and this pattern continues. Thinking back to the numbers who lived in houses in this village this is true and many longer serving residents will confirm this. At the same time average ages are rising. The dual effect is that if there is no more development in the region then the population will fall the number of school places will fall and the number of senior citizens will rise. In Chelmsford Borough some 15000 fewer school children are estimated and 3000 more older people. Also some 150,000 people move from London Boroughs to Essex every year.

To have schools, shops and post offices villages must be viable and the cost of pre school and school is measured per pupil. In primary schools with 95 to 105 pupils viability will fall far behind schools with say 130 pupils and this effects funding. Shops and post offices need both numbers of residents and their support. I won't draw a conclusion from this but I think that it will trigger much thought and debate in rural communities like ours and lead to opportunities. What do you think? We need to produce a 'Village Design Statement' to follow our 'Parish Plan'. Please get involved!

Good wishes to all



Mike Harris
Chelmsford Borough Council Member for Bicknacre East and West Hanningfield
Deputy Mayor
michael.harris@chelmsford.gov.uk

HANNA'S FIELD CHARITY



The **AGM** of the Charity will take place at 7.30pm on Wednesday 25th April 2012, in the first floor meeting room at the Village Hall, when a new committee will be elected. East Hanningfield residents are particularly welcome both to attend the meeting and to seek election as trustees.

We are currently reviewing a number of large expenditure projects and establishing priorities for the maintenance and development of facilities at the village hall and around the sports field.

Major expenditure projects that we are considering include:

- Repair and Maintenance of the car park and footpaths around the hall and across the field
- Extending the main car park with a “green” overflow car park
- Replacing the hall roof which is 25 years old and starting to leak
- Improving the insulation and thermal efficiency of the small hall by replacing windows, doors, ceiling, heating and lighting.
- Extending the entrance lobby and village shop
- Rebuilding the mountain bike mounds
- Ploughing, levelling and reseeding the football pitches
- Resurfacing the sports courts
- Extending the sports wall
- Completing a trim trail around the field to include skate board ramps
- Creating a Community Suite above the small hall
- Install CCTV

As you can see the list is long and does not include many smaller day to day maintenance issues. We are very aware that as we add facilities the on-going maintenance of those facilities becomes a considerable burden on the Charity. These projects can only proceed if the funds are available. We rely upon grants from a number of different sources to fund each project. These sources include both local and national funders from the Parish Council to the

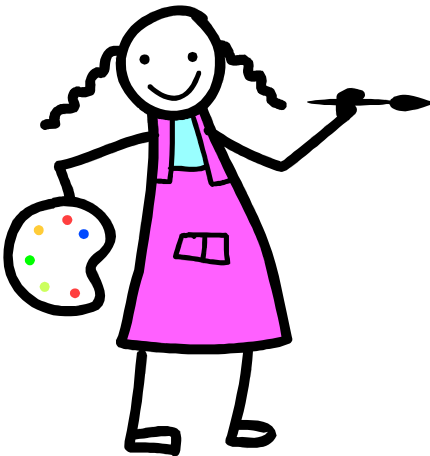
National Lottery not forgetting of course our own fundraising activities.

The Hanna's Field Charity Committee is always looking for new members to assist in the running of the Village Hall and sports facilities. If you would like to find out more about the Charity please contact me or any member of the committee. The large hall, small hall, meeting room, sports field and sports courts/tennis court are available for booking which can be made via Dan Crow on **400965**. Please make use of the facilities which are available at a discounted rate if you live in the village.

More information about the Charity can be found on our website which is part of the Parish Council website
www.essexinfo.net/easthanningfieldparishcouncil/village-hall/

Colin Warren, Chairman
401050 cwarren132@aol.com

The **Annual Art Exhibition & Sale** will take place on Saturday, 7th July.



We are looking for more artists to exhibit along with helpers to set up the exhibition.

If you would like to exhibit or help please contact Wendy Thomas on 400797.

FROM REVEREND PAM

I have just peeped out of my window and seen the snow covering the garden, the trees and also plant pots on our terrace. The pots look like extremely large cream-covered cup cakes. It wasn't long ago I was delighted to see that the tulips were beginning to appear in those same pots - a promise of spring, I thought. Alas, my delight was short lived and now I have a view of make-believe cup cakes instead of a promise of spring.

I am, of course, trusting that beneath the snowy caps on the pots the tulips have not given up and will indeed continue to grow and thrive after the snow has melted away. In some situations it is all too easy to give up when things appear promising to begin with but don't fulfil our expectations as soon as we would like.

Easter is an example of hope turning to disappointment, and disappointment turning to joy. This is how it happened for Jesus' friends who didn't expect or want his death, but their deep disappointment and despair turned to joy when they witnessed the resurrection. Easter is a time which reminds us of disappointment, pain and grief. But it also reminds us of the positive effects of hope, of victory over difficulties and Christ's promise to be with us under all conditions. In the church, at Easter, we intentionally live through these last days of Christ's life (in our Maunday Thursday Meal and in the Good Friday meditations). We then experience the real excitement and joy which comes with celebrations on Easter Day. This is a lived experience and a promise fulfilled.

Every blessing to you all

Rev Pam
pencofpam@btinternet.com



...AND FROM THE CHURCH- WARDENS

Christmas past – Just a brief look back to say thank you for the great support received for the Church events and for all the hard work which made them possible. We hope you enjoyed the new feature of an illuminated crib scene by the north gate created by Dr John, and our special thanks go to the Rev'd Pam for keeping going right to the end, when she should have been in bed nursing a heavy cold and serious throat infection.



Replacement of Church heating continues to be high on the agenda, along with installing toilet and kitchen facilities but the due processes seem to take for ever. Please be assured we are as anxious as everybody else to see real progress on both issues, and we trust that we may have something to report in the next issue of EH News.

Church annual spring clean will be on the morning of Saturday 24th March, roughly between 9.30 am and 12 noon. This is usually a light hearted but strenuous time together, with the necessary refreshments to keep the volunteers going until the job is done. You don't have to be a church member in order to lend a hand – so feel free to drop in for a while if you'd like to help. If you prefer weeds to dust and the weather is fine, there may be an opportunity to work outside too.

The Quinquennial Survey of the Church building is due this year, when we shall be told what the next required round of maintenance and repair work will be, to keep the old building in a sound condition. Whilst it is an event we never look forward to because of

the costs involved (there is always some expensive work needing to be done), yet the timing this year may be quite helpful. It can now be carried out in conjunction with the consideration of the work required for new heating and additional facilities, which does offer the prospect of it being a more cost-efficient exercise than usual.

Forthcoming services and events as currently known - please see the Village Diary on pages 13-17 but watch out for further publicity nearer the time, giving final details of special events.

For further information about All Saints' go to www.easthanningfieldchurch.org, where we also offer a direct link to the latest Village Diary on the Parish Council website.

Ron Attenborough 400361
ronald304@btinternet.com

Sandra Robinson 400819
sandra.robinson@btinternet.com

Godfrey Home Improvements

Interior & Exterior
Decoration
General Property
Maintenance
Trustworthy and reliable
service

Free Estimates
Contact: Pete Godfrey
Phone: 01245 400650
Mobile: 07730904377
E mail:
Peter2godfrey@btinternet.com



VILLAGE DIARY

www.essexinfo.net/easthanningfieldparishcouncil/village-diary-2012/

MARCH

- Thu 1 7.45pm **BIBLE STUDY** at Bethel Church
- Fri 2 9.30-11.30 **HANNA'S TOTS**, Village Hall via back door.
- Sun 4 8.30am **HOLY COMMUNION** (BCP) - 2nd Sunday of Lent at [All Saints' Church](#) followed by continental breakfast between services.
10am **ALL AGE SERVICE** at All Saints' Church followed by refreshments.
10.45am **SUNDAY FAMILY WORSHIP** at Bethel Church followed by Fellowship Lunch
5pm **ALL SAINTS' LENT COURSE** (2)
- Tue 6 10.30am **LADIES MEETING** at Bethel Church
- Wed 7 2.35-2.55pm **MOBILE LIBRARY** at Ashley Green
3.15-4pm **MOBILE LIBRARY** - Village Hall car park.
- Thu 8 7.45pm **BIBLE STUDY** at Bethel Church
- Fri 9 9.30-11.30 **HANNA'S TOTS**, Village Hall via back door.
- Sat 10 10am-12.30pm **BOOK SALE & COFFEE MORNING** in the first floor meeting room at the Village Hall. Browse and have a chat over a delicious coffee and home-made
- Sun 11 10.45am **SUNDAY FAMILY WORSHIP** at Bethel Ch
11am **HOLY COMMUNION** at All Saints' Church
5pm **ALL SAINTS' LENT COURSE** (3)
- Mon 12 2.15pm **EDWARD BEAR CLUB** for 0-5s with parents & carers at All Saints' Church.
- Tue 13 10.30am **LADIES MEETING** at Bethel Church
- Wed 14 **Recycling Collection** (The following day for Bennetts Ave, Old Barn Lane, Southend Rd & Tilesworks Lane)
- Thu 15 7.45pm **BIBLE STUDY** at Bethel Church
- Fri 16 9.30-11.30 **HANNA'S TOTS**, Village Hall via back door.

- Sat 17 11am-1pm **CAFE BAR at Bethel Church**
- Sun 18 10.45am **SUNDAY FAMILY WORSHIP** at Bethel Ch
 11am **MOTHERING SUNDAY SERVICE** with Family Communion at All Saints' Church.
 5pm **ALL SAINTS' LENT COURSE (4)**
- Tue 20 10.30am **LADIES MEETING** at Bethel Church
- Wed 2.35-2.55pm **MOBILE LIBRARY** at Ashley Green
 21 3.15-4pm **MOBILE LIBRARY** - Village Hall car park.
 2pm **WOMENS INSTITUTE MEETING** in the WI Hall.
- Thu 22 7.45pm **BIBLE STUDY** at Bethel Church
 8pm **PARISH COUNCIL MEETING** in the first floor meeting room at the Village Hall via the side entrance.
- Fri 23 9.30-11.30 **HANNA'S TOTS**, Village Hall by back door.
- Sat 24 9.30am **ALLSAINTS' CHURCH ANNUAL SPRING CLEAN**. Volunteers welcome.
- Sun 25 10.45am **SUNDAY FAMILY WORSHIP** at Bethel Ch
 11am **HOLY COMMUNION** at All Saints' Church
 5pm **ALL SAINTS' LENT COURSE (5)**
- Tue 27 10am **COFFEE MORNING** at Bethel Church
- Wed **Recycling Collection** (The following day for Bennetts
 28 Ave, Old Barn Lane, Southend Rd & Tilesworks Lane)
 7-10pm **LADIES PAMPER EVENING** at the Village Hall. Tickets on sale on Thursdays at Preschool 9-9.30am, and Fridays at Hanna's Tots 9-11.30am.
- Thu 29 7.45pm **BIBLE STUDY** at Bethel Church
- Fri 30 9.30-11.30 **HANNA'S TOTS** Village Hall via back door.
- APRIL**
- Sun 1 8.30 am **HOLY COMMUNION** at All Saints' Church
 10am **ALL AGE SERVICE FOR PALM SUNDAY** at ASCh
 10.45am **SUNDAY FAMILY WORSHIP** at Bethel Ch
- Tues 3 10.30am **LADIES MEETING** at Bethel Church
- Wed 4 2.35-2.55pm **MOBILE LIBRARY** at Ashley Green
 3.15-4pm **MOBILE LIBRARY**, Village Hall car park.

- Thu 5 7pm **MAUNDAY THURSDAY** Agape meal in homes followed by short service of Holy Communion at AllSaints'
7.45pm **BIBLE STUDY** at Bethel Church
- Fri 6 9.30-11.30 **HANNA'S TOTS**, Village Hall via back door.
10-11am **GOOD FRIDAY SERVICE** at Bethel Church
12 Noon **GOOD FRIDAY** Quiet Service of readings, hymns, prayers & reflections until 1pm at All Saints'
- Sun 8 10.45am **EASTER FAMILY WORSHIP** at Bethel Ch
11am **EASTER DAY** service with Family Communion at All Saints' Church.
- Tue 10 10.30am **LADIES MEETING** at Bethel Church
- Thu 12 7.45pm **BIBLE STUDY** at Bethel Church
- Fri 13 **Recycling Collection** (The following day for Bennetts Ave, Old Barn Lane, Southend Rd & Tilesworks Lane)
9.30-11.30 **HANNA'S TOTS**, Village Hall via back door.
- Sun 15 10.45am **SUNDAY FAMILY WORSHIP** at Bethel Ch
11am **HOLY COMMUNION** at All Saints' Church
- Mon 16 2.15pm **EDWARD BEAR CLUB** for 0-5s with parents & carers at All Saints' Church.
- Tue 17 10.30am **LADIES MEETING** at Bethel Church
- Wed 2.35-2.55pm **MOBILE LIBRARY** at Ashley Green
18 3.15-4pm **MOBILE LIBRARY** at the Village Hall car
2pm **WOMENS INSTITUTE MEETING** in the WI Hall.
- Thu 19 7.45pm **BIBLE STUDY** at Bethel Church
- Fri 20 9.30-11.30 **HANNA'S TOTS**, Village Hall via back door.
- Sun 22 10.45am **SUNDAY FAMILY WORSHIP** at Bethel Ch
11am **HOLY COMMUNION** at All Saints' Church
- Tue 24 10am **COFFEE MORNING** at Bethel Church
- Wed **Recycling Collection** (The following day for Bennetts
25 Ave, Old Barn Lane, Southend Rd & Tilesworks Lane)
8pm **HANNA'S FIELD CHARITY ANNUAL GENERAL MEETING** in the first floor meeting room at the Village Hall. All residents are entitled to attend.

- Thu 26 8pm **PARISH COUNCIL MEETING** in the first floor meeting room at the Village Hall via the side entrance.
- Fri 27 9.30-11.30 **HANNA'S TOTS**, Village Hall via back door.
8-11pm **PRAYER & PRAISE EVENING** at Bethel Ch
- Sat 28 9am **VILLAGE TIDY-UP** Meet at Village Hall car park for gloves, sacks, hi-viz jackets and litter-pickers
- Sun 29 10.45am **SUNDAY FAMILY WORSHIP** at Bethel Ch
11am **5TH SUNDAY SPECIAL** at All Saints' Church.

MAY

- Tue 1 10.30am **LADIES MEETING** at Bethel Church
- Wed 2 2.35-2.55pm **MOBILE LIBRARY** at Ashley Green
3.15-4pm **MOBILE LIBRARY** - Village Hall car park.
8pm **ANNUAL ELECTORS' MEETING** in the first floor meeting room at the Village Hall. Any East Hanningfield elector may speak on any subject of local concern.
- Thu 3 7.45pm **BIBLE STUDY** at Bethel Church
- Fri 4 9.30-11.30 **HANNA'S TOTS**, Village Hall via back door.
- Sun 6 8.30 am **HOLY COMMUNION** at All Saints' Church
10am **ALL AGE SERVICE** at All Saints' Church.
10.45am **SUNDAY FAMILY WORSHIP** at Bethel Church
- Tues8 10.30am **LADIES MEETING** at Bethel Church
- Thu 10 **Recycling Collection** (The following day for Bennetts Ave, Old Barn Lane, Southend Rd & Tilesworks Lane)
7.45pm **BIBLE STUDY** at Bethel Church
- Fri 11 9.30-11.30 **HANNA'S TOTS**. Village Hall via back door.
- Sun13 10.45am **SUNDAY FAMILY WORSHIP** at Bethel Church
11am **HOLY COMMUNION** at All Saints' Church
- Mon 14 2.15pm **EDWARD BEAR CLUB** for 0-5s with parents & carers at All Saints' Church.
- Tue 15 10.30am **LADIES MEETING** at Bethel Church
- Wed 16 2.35-2.55pm **MOBILE LIBRARY** at Ashley Green
3.15-4pm **MOBILE LIBRARY** at the Village Hall car
16 2pm **WOMENS INSTITUTE MEETING** in the WI Hall.

- Thu 17 7.45pm **BIBLE STUDY** at Bethel Church
- Fri 18 9.30-11.30 **HANNA'S TOTS**, Village Hall via back door.
- Sun 10.45am **SUNDAY FAMILY WORSHIP** at Bethel Church
- 20 11am **HOLY COMMUNION** at All Saints' Church
- Tue 22 10.30am **LADIES MEETING** at Bethel Church
- Wed **Recycling Collection** (The following day for Bennetts
23 Ave, Old Barn Lane, Southend Rd & Tilesworks Lane)
- Thu 7.45pm **BIBLE STUDY** at Bethel Church
- 24 8pm **PARISH COUNCIL MEETING** in the first floor meet-
ing room at the Village Hall via the side entrance.
- Fri 25 9.30-11.30 **HANNA'S TOTS** in the Village Hall. Entrance
- Sun 10.45am **SUNDAY FAMILY WORSHIP** at Bethel Church
- 27 11am **PENTECOSTAL PRAISE SERVICE** of Holy Com-
munion at All Saints' Church, & Picnic on church lawn.
- Tue 29 10.30am **LADIES MEETING** at Bethel Church
- Wed 2.35-2.55pm **MOBILE LIBRARY** at Ashley Green
- 30 3.15-4pm **MOBILE LIBRARY** at the Village Hall car park.

Baddow Plumbing Services



Replacement Boilers
&
Bathroom Suites



All Domestic Plumbing Work
Undertaken

Free Estimates



01245 - 358355

Stephen Bryan

BETHEL CHURCH

Above Us Only Sky? Do you recognize these words? They are taken from John Lennon's song 'Imagine'. They are also the words which form the name of a new charity that we at Bethel Church are heavily involved with and committed to. The purpose is to provide immediate and long-term support for the homeless in the UK, primarily in Essex and London.

It is quite shocking to see just how many people are sleeping rough on the streets of London, and closer to home in places like Ilford and Romford. At the time of writing this for the village magazine, we are experiencing sub-zero temperatures, so imagine just how desperate some people are.....it isn't hard to do.

Above Us Only Sky? Has been serving the homeless for the last 18 months. This means early starts on Saturday mornings in Westminster and Sunday mornings in Ilford and Romford.

Simon Houlding Upholstery

**TRADITIONAL & MODERN UPHOLSTERY
CURTAINS & BLINDS**

◆ est.1998 ◆

- Loose covers • Bespoke furniture • Antique restoration •
- Poles, tracks & tie backs • Fabrics • Repairs •
- French polishing •

Open 6 Days a Week

For Free Advice *and* Estimates call to
arrange an appointment *or* Visit our Workshop

T. 01621 859484 M. 07990 972676

Unit F, Stock Chase, Heybridge, Maldon, Essex CM9 4AA

www.houldingupholstery.co.uk



Our vision is to provide every homeless person in need with a military-style, all weather sleeping bag, capable of keeping them warm whatever the conditions may be. However, the sleeping bag is just the start; we aim to build loving relationships with the homeless and helpless, to meet not just their physical but also their spiritual needs, to show them God's love and to treat them with respect and dignity. This means talking to them, listening to them, comforting them, praying with them and providing for them in a variety of ways.



Above Us Only Sky? is not just a reference to the fact that the homeless in our communities don't have a roof over their heads; it also alludes to the fact that there is more to life than this, that there is a God in heaven who loves us and wants us to find salvation and eternal life



LOG ON

**Seasoned logs, kindling, coal
delivered to your door.**

Free delivery

Contact Mark for details

01245 600347 or 07811 206809

or hoflupindrive@hotmail.com

through His son, Jesus. This is something that we share with the homeless that we are working with, showing them the love of God by meeting their immediate needs with the hope that as we share the gospel, many more will come to faith.

If you would like to know more about AUOS? Then please visit the website: www.aboveusonlysky.org.uk

On the subject of websites, we are pleased to announce Bethel's new website is now live. There will be regular updates and we will be able to keep you all informed of all the things going on - which you are warmly invited to. Take a look: www.bethel-ec.com

Here's when we meet: Sunday Family Worship – 10.45am, Tuesday Ladies Meeting – 10.30am, Thursday Bible Study – 7.45Pm. Other dates are in the Village Diary, pages 13-17.

Every blessing – from all your friends at Bethel Evangelical Church, Old Church Road.

Roydon Hearne



VILLAGE FETE - 8th SEPTEMBER 2012



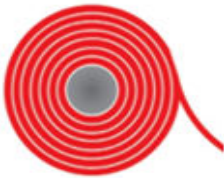
Although the real Olympic Games will be almost over by September 8th, the village fete will be celebrating this momentous occasion by holding some mini-Olympic events for children to enter. There will also be a decorated hat competition – with an Olympic theme, of course! Further details will follow in the next newsletter.

The fete will feature the familiar mix of entertainment, stalls, refreshments and 5 A-side football - plenty to entertain all the family! We welcome volunteers to help run stalls; set up between 9.30 – 11.30am; clear up after 5pm; make cakes. If you would like to be involved, please contact me for further details.

Jackie Feehan 400862

Jackie@feehan.vispa.com

CARPETS & VINYL



- VIEW SAMPLES IN YOUR OWN HOME
- SUPPLY AND FITTING
- FREE QUOTATIONS
- LOCAL MAN—OVER 30 YEARS IN BUSINESS

CONTACT

NEIL POULSON

PHONE 01245 221316

MOBILE 07808 123676

Email: n.poulson@btinternet.com

Intercountry



Serious about selling your home?

Ready for a refreshing alternative approach?

%



- Do you need to sell in a specific timescale?
- Do you want to achieve the best possible price fast?
- Do you need to attract a lot of interest quickly?

Then our For Sale by Tender option could be for you

It offers:



- No hidden costs the buyer pays the fees*
- Flexible planned sales process
- Your chosen closing date
- Dedicated Marketing support
- Same high level of customer service
- No Selling fees

For a service as individual as you are call

01245 200024

* There is an administration fee of £250 + VAT for you to pay but thats it!

Covering Great Baddow and the villages
6 Duke Street, Chelmsford, Essex, CM1 1HL

www.intercountry.co.uk

EAST HANNINGFIELD WI

May we extend our best wishes to everyone for the New Year. Our past President Lilian was able to hang up her hat after 11 years of dedicated service to EHWI. Our sincere thanks go to her and her committee for all the super entertaining meetings we have had over the years. It will be a hard act to follow. My name is Flora Virgoe and the Institute have been brave enough to elect me as their new President.



Did you know that we party and have fun at the W.I.? The last two meetings have been no exception. Our Christmas meeting was a feast of food, fun and lots of party cakes expertly made by our guest speaker Janet Vaile, and of course it would have been most impolite not to eat them. This was followed by another party in the New Year with Ron Burrell, a magician who baffled us all with his skills while we feasted yet again. This theme will continue through the year and include a big celebration of East Hanningfield Women Institute's 95th birthday in June 2012, an achievement to be very proud of.

On the 11th April we are holding a Charity Coffee morning and Bring and Buy at the W.I. Hall in Old Church Lane at 10.30. We would be delighted to see you, please come along.

The dates of our meetings can be found in the Village Diary and we have a full, fun packed diary for the year. We meet mostly the 3rd week of the month at 2.00 pm with some slight changes through the year. Do come along and enjoy the laughter and company. You will be most welcome.

Flora Virgoe
400073

PRESCHOOL

The children have been busy this term learning about Zoo, sea life, countryside and garden animals. They have been bird spotting in their gardens and sharing their findings with their friends at preschool. Lots of fun, had by all.

East Hanningfield
Pre-School



Registered Charity
267508

Our next fundraising event is on the 28th March 2012, back by popular demand is the Ladies Pamper Night 7pm -10pm at East Hanningfield Village Hall. Manicure/ Pedicures, facials, Jamie at home, Jewelry/handbags, spray Tans, Cranial massage, Thai Yoga Massage, Reiki, Candles, cup cakes and much more. For a girly night out book your tickets/treatments now. You can call Savannah on 01245 400979 or tickets will be on sale Thursdays 9-9.30am at the preschool or Fridays 9am-11.30am at Hannah's Tots.

Tickets cost £4 in advance and £5 on the door, in your ticket price it includes a Cocktail on arrival and a goodie bag on your departure.

If your child is aged 2-4 years and you are interested in your child attending the preschool, spaces are starting to become limited and on certain days there is now a waiting list.

Please visit our website www.easthanningfieldpreschool.org.uk or call 07732951613 during session hours, Monday-Thursday 9:15-12.15. We look forward to hearing from you. If you have a child under 2 and wish to come and view the preschool please contact us and we can then place you on our waiting list.

Francesca Chapman
Secretary

TOTS

It has been lovely to see some new faces over the last few weeks, and to see children making new friends.

If you are a parent/carer with children aged birth-5 and would like to come along for a cuppa and a chat whilst your children play, we meet Friday mornings at the village hall, entrance via the back door. Sessions run 9.30-11.30, for a small donation of £1.50. You do not need to be a regular to come along.



We are looking forward to shelving being fitted so we can organise our toys a bit better. We would like to say a big thank you to Martin Gard for donating the shelving.

The upcoming health visitor dates will be placed on the village hall notice board.

We have a children's bouncy castle which we hire out for £25, ideal for parties.

If you are interested in taking part in the running of the sessions, please let Rose or me know; we are always grateful for a helping hand, and it means that we can share the workload.

See you Friday!



Contract Tilers

Specialist in all aspects of wall and floor tiling, both domestic and commercial.

Free estimates

Friendly, trustworthy and reliable local service.



Tel: 01245 400800
Fax: 01245 403066
Email: admin@contracttilers.co.uk
Website: www.contracttilers.co.uk

Neighbourhood Watch



Don't Forget!

Lock up – *secure all entrances*

Lights on – *make it look like you're in*

Look out – *keep an eye out for unusual things,
and those less able*

Help make our village safer



SIMPLES!

CAN YOU HELP?

We are knitting/crocheting 8" squares for orphaned children in South Africa using any wool (but the thicker the better and please leave long length of wool at end for sewing up later). Look at their website www.knit-a-square.com for more details.



Either knit at home, we can collect if necessary or join us on a Monday evening in The Windmill Pub from 8 pm for knitting and nattering! Contact Tara 403294 or Gil 400298 or Clare 403174 for further information. We are happy to help anyone wanting to know how to knit, even left-handed! The recipients are not worried about the odd dropped stitch or less than perfect work!

We have sent two parcels already and would love your help to achieve more parcels in 2012.

BOOK SALE AND COFFEE MORNING

On **Saturday 10th March**, from 10am until 12.30, there will be another second hand book sale in the Village Hall upstairs meeting room. There will be a book bin in the village shop during the week prior to the sale for any donations, but as we now have a large stock, we would ask for **ONLY** fiction paperbacks. We have a good selection of children's books, so younger villagers are very welcome to come and browse. We also serve excellent tea and coffee, biscuits and homemade cakes at very reasonable prices. No need to spend your money in Starbucks or Costa! Proceeds to Hanna's Field Charity and All Saints' Church.

