

***EAST
HANNINGFIELD
NEWS***

*Summer 2011
No. 136*



Feeding the Bear

FROM THE ACTING EDITOR

East Hanningfield News is published by East Hanningfield Parish Council and delivered by volunteers free to all homes in the parish. Inclusion of articles or advertisements does not signify endorsement by the Parish Council.

**Copy date for the next edition is
Friday 12th. August.**

Earlier submission is appreciated. Please continue to send articles and advertisements to 2 Clinton Close or karen.plumridge@btinternet.com .

CORRECTION

The Editor has been asked to correct a statement on this page in the previous edition of the News regarding the initiation of the appeal for a community building. The full text of the written request can be found on page 13.

The Editor clearly confused the order of events, apologies for rewriting history and the distress that this has caused.

The Playgroup's need for accommodation following its removal from the old Rectory to the WI Hall happened some years after the creation of the Community Centre Appeal Committee.

The Playgroup's donation of £2,500 to Hanna's Field Charity came at about the time of building completion in early 1986. It is believed, but open to correction, that Playgroup was the only village group, other than the Parish Council and Hanna's Field Charity, that contributed financially to the village hall so deserves some recognition for this.

PARISH COUNCIL

The term of office of the Parish Council elected in 2007 came to end in May. All but one of the councillors have decided to continue, and I should like to thank Penny Waters for her contribution to the work of the Council during her time as a councillor and wish her well for the future. Her botanic knowledge and her representation of residents living outside the village centre was greatly valued by PC.

PC's Annual Report for the year 2010-11 was presented at the Annual Assembly. If you would like to read it you can find it on the website, but paper copies are available on application to me. The Annual Report contains PC's receipts and payments account for the financial year that ended on 31st. March, 2011 and an overview of the year by the Chairman.

If you walk along the path across the playing field, or visit the play area you will have noticed the arrival of a large green frog and a chocolate brown bear (see front cover). These are new bins to encourage users of the play area to dispose of their litter properly, and the plan appears to be working as they do fill up. Not so conspicuous are the new safety surfaces and the benches for parents to rest on while their children are playing.



All the items including the safety surfaces are made with recycled materials. PC's relatively small financial contribution of £750 to the Hanna's Field Charity project encouraged the Community Initiatives Fund and Essex Community Foundation to contribute much larger sums so that the scheme with a total cost of just over £8,000 could be completed. PC has found over many years that this "pump priming" is a proven way of making a little money go a

long way by attracting more funds into the parish. Well done to HFC for seeking out and winning the grant funding!

Further to the subject of field improvements, some of the excavated soil from the play area project was added to the area of the bike mounds at the corner of the playing field to create more jumps and obstacles, but there wasn't enough. The Charity has been offered a lorry load of earth by David Chennells, but a lorry is needed to transport it from the farm to the playing field. If anyone can oblige, please let me know.

As mentioned in the last news, this year is the 25th. Anniversary of the construction of the Village Hall. In recognition of this there will be a dance on **Saturday, 1st. October**. A band called the Kings of Wah, which comes highly recommended, has been booked for the occasion. Put the date in your diary, on your calendar or where ever you keep important aide-mémoire because this is going to be an event not to be missed!



John Allenby who is the parish's representative at the County Council's public transport meetings, has asked me to mention two new services. The first is the Broomfield Hopper which circulates clockwise around the Broomfield Hospital site every twenty minutes taking in Farleigh Hospice and the Crystal and Linden Centres. It runs from 8.30am to 6pm Monday to Friday, is free and will drop you off at any point on the loop on request. The second is a bus to Hylands House from Market Road, Chelmsford, outside County Hall. It runs every second Monday of the months April to September at 10am, 12noon and 2pm returning at 1, 3 and 5pm. I have also received a call from another bus user to remind residents to support the bus service, because low use will make the County Council reconsider its subsidy, and unprofitable running will lead to the loss of contractors willing to undertake the routes.

Please note that there are new timetables in the bus shelters and some of the times are different, so if you are not a frequent bus user you might not be aware of the changes.

There was a plan to include a contacts list in this issue of the News and a request was issued in the last edition for groups to let me know the name and contact details of the member they wished to nominate as their contact. There was no response to that call. I'm sure that local groups do want to be contacted by potential members, so please let me have the contact details of the person who deals with enquiries, so that we can compile a list which will benefit the groups who want new members and local people looking for new interests and activities.

Thanks to all those who helped with the Village Spring Clean on 7th. May. Everyone commented that there was much less litter than usual. Nevertheless, an Autumn Clean is planned for Saturday 22nd. October, so please make a note of the date and join us for some fresh air and light exercise.

An extra summer play day has been added to the dates in the last News. The Tuesdays to remember are **9th, 16th & 23rd August 10am-12 noon**. The two Easter play days achieved attendances of 60 and 45 children, so clearly met a need.



Please note that the PC meeting in July is earlier in the month than the usual fourth Thursday, being on 14th. PC Meetings are open to the public and give residents the opportunity to speak during Public Question Time which takes place shortly after the opening of each meeting. We are now using an overhead projector which means that everyone can see the plans and papers being discussed.

Karen Plumridge, Clerk to the Council 400628
karen.plumridge@btinternet.com
www.essexinfo.net/easthanningfieldparishcouncil

Intercounty

Intercounty are proud sponsors of East Hanningfield Art Exhibition 8th/9th July.

If you are serious about moving, give me a call on

01245200024/07984192938

We are here for you until 9pm weekdays

Carol Phillips

Your local Property Professional
Covering Chelmsford and the villages

6 Duke Street, Chelmsford, Essex, CM1 1HL www.intercounty.co.uk



SALE AGREED

We arranged over 19 accompanied viewing appointments resulting in 7 offers for this property. Now Sale Agreed - similar properties urgently required for disappointed buyers.



Howe Green £675,000

- Modern detached 4/5 bed
- Integral self-contained ANNEXE
- Two en-suites + family bathroom
- Great location on outskirts of town



Howe Green £850,000

- Detached house & outbuildings
- Equestrian or small business
- Land, Stables, storage & offices
- Lapsed planning for det bungalow



Retendon Village £295,000

- Spacious 3 bed bungalow
- Gardens BACKING CRICKET CLUB
- Bathroom plus shower room
- Conservatory
- Must be viewed



East Hanningfield Hall £3,500 PCM

- 5 Bed Grade II Listed Country house
- 8 Acres
- Tennis Court
- Swimming Pool
- Available Sept. 2011



**Properties always required in:
East Hanningfield • Sandon • Howe
Green and Bicknacre**



Buying, Selling or Letting?
Call Carol Phillips your local Property Professional

01245200024

BOROUGH COUNCILLOR'S MESSAGE



Firstly; many, many, thanks for supporting Richard Poulter and me with an increased percentage of the vote. Chelmsford now has an extra 10 Conservative members at the Borough Council and an excellent mandate to continue to make improvements. I am particularly proud that we are maintaining front line services and have uniquely applied an extra £100,000 to volunteer and other non governmental groups.

I hope to become Deputy Mayor in the coming session and feel very proud that my colleagues have supported Julia and me in this significant civic role in the way that residents have supported me as a councillor.

I do hope that we can be worthy of your trust, we shall certainly try. I always try to observe the election rules and have not entered a piece for the magazine recently; to be able to do so now in this way is really enjoyable though humbling for me.

Kindest regards and Thanks.

Mike Harris

Member for Bicknacre East and West Hanningfield Chelmsford Borough Council.



Contract Tilers

Specialist in all aspects of wall and floor tiling, both domestic and commercial.

Free estimates

Friendly, trustworthy and reliable local service.



Tel: 01245 400800
Fax: 01245 403066
Email: admin@contracttilers.co.uk
Website: www.contracttilers.co.uk

HANNA'S FIELD CHARITY

For this issue of the News I shall repeat my report which was presented at the Charity AGM on 13th April 2011 and again at the Parish Assembly on 11th May 2011. I apologise to those of you who attended either meeting for the repetition. I was disappointed at the lack of interest demonstrated by the poor attendance at the Charity AGM. It was pleasing however that several young villagers did come and expressed a strong interest in the cycling mounds at the rear of the field. The annual accounts of the charity show that we were responsible for dealing with just under £36,000 of income from a mixture of Rental Income, Grant Income and Fund Raising activities. We spent this income on various capital projects and on the day to day costs of running the hall and field. As a result of a recent roof survey we have been advised that the roof on the hall is reaching it's use by date and will soon need replacing. We are awaiting estimates for the cost of this work but it will be a considerable sum which will need to be raised by the Charity.

I remain concerned for the future continuity of the charity management and hope that after reading the annual report one or more of you, the villagers who benefit from the charity, will volunteer to join the committee as Trustees and be part of the future of the charity.

Hanna's Field Charity Chairman's report to the 2011 AGM

In many ways the last year has been yet another successful year for the Charity. At the start of the year we set ourselves the target of relaying the flooring in the main sports hall. We exceeded it by renewing all of the flooring throughout the ground floor of the village hall. Another target was to install Wifi in the hall and this is now available to hall users.

There is one important target that I set at the start of the year

which has not been achieved. I wanted to ensure the long term stability of the Charity by completing some succession planning. The majority of the current charity officers have been on the committee since the creation of the Charity over 25 years ago. I am one of the newcomers having only served on the committee for nearly 23 years! It really is time for the original committee to be passing the responsibility of running the Charity over to newer younger fresher faces. They can only do so if new residents come forward to take their place. There is always the chance that we will lose the village hall if volunteers do not come forward.

The work load of the Charity has once again been borne by very few for the gain of the many residents and organisations who use the facilities at the village hall and sports field. No officers receive any remuneration; they are all volunteers and all should be thanked for their efforts on behalf of the village.

One member who has worked tirelessly since the start of the Charity has been Sylvia Hopkins. Many of you will know that Sylvia has been battling with ill health and has very reluctantly decided to hang up her Hanna's Field Committee shoes. She will be badly missed but has confirmed that she will still be supporting the fund-raising activities of the Charity in the future. Thank you Sylvia for all your hard work over very many years.

I am also grateful to Sharon Crow who took over the cleaning of the hall and organises the bookings following the retirement of Terry and Dawn Mills last March.

The Essex Probation Service continued their work with us which enabled the Charity to maintain the hall and grounds to a high standard for the benefit of all villagers.

It is good that the Village Shop and Post Office remains in the village. If we are to retain the Post Office and Shop in the village it is

essential that we all use the facility and support Ash.

The Annual Art Exhibition continued as a major fund raising event showing works from many local artists. This year's exhibition will be on the 8th and 9th July. The Village Fete, a joint venture with All Saints Church, successfully raised a record sum under the Chairmanship of Jackie Feehan and provided a fun event for all. It was good that the event was also supported by several of our local businesses and we are grateful for their sponsorship. This year's fete will be on Saturday 10th September. We have built on the success of the bookstall at the fete by running quarterly Saturday Book and Coffee mornings in the upstairs committee room. These regular book stall events have proved to be popular and successful and we hope to continue with them as a permanent quarterly event.

The cooperation between the Charity and the Parish Council has been enhanced with regular liaison meetings which has brought about a number of detailed improvements and suggestions.

If you are listening to or reading this report have you considered joining the committee? We would welcome new members to assist in the future development of the Charity.

More information about the Charity can be found on our website www.essexinfo.net/easthanningfieldparishcouncil/village-hall/ .



If there are any questions I will do my best to answer them.

Colin Warren,
Chairman Hanna's Field Charity
01245 401050 cwarren132@aol.com

HANNINGFIELD MOTOR CO

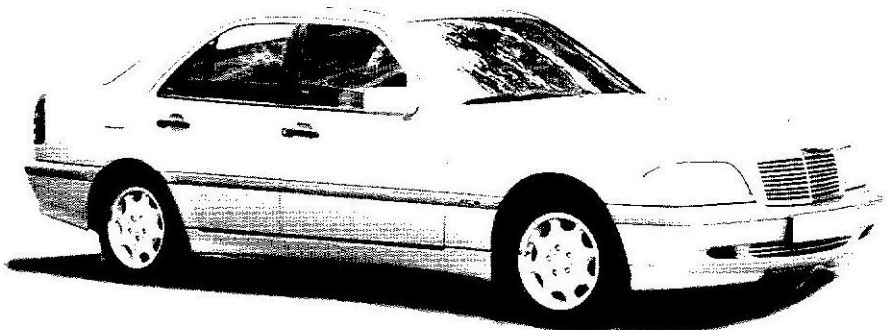


R.M.I.

MOT CENTRE

**SERVICING
DIAGNOSTICS
REPAIRS**

**MOT
£40**



TELEPHONE: 01245 400406

OPENING HOURS: MON-FRI 8.30AM TO 5.30PM

SATURDAY 9.00AM TO 1.00PM

Unit 23, East Hanningfield Industrial Estate, Old Church Road, East Hanningfield, Essex CM3 5BX

LETTER TO THE EDITOR

Dear Editor,

With reference to the article on the inside front cover of edition No. 135 of East Hanningfield News, this contains a statement which is factually incorrect in regard to the involvement of 'the Playgroup' with the village hall project.

At the annual parish meeting in 1972, which was attended by a very large number of the general public, the Parish Council was asked what plans it had to provide the village with a playing field and a village hall, given the absence of any public hall facility other than the Women's Institute building in which the meeting was being held, coupled with the impending loss of the rented playing field, which was to become the site for a new District Council housing scheme.

In response, Parish Council advised that it had no plan to rectify these deficiencies, but resultant upon the representations made to it at this meeting, it agreed to the establishment of a sub committee to the Council, - to be named East Hanningfield Community Centre Appeal Committee, whose specific brief would be to raise money for the purchase of land and to provide a village hall.

I was Secretary to the East Hanningfield Playgroup Association at the time, - latterly its Chairman, and I can state quite categorically that the Association did not initiate or have any involvement whatsoever in the appeal for a community building as state in your article, neither did it have any involvement in raising funds for the project nor with the fund raising sub-committee of East Hanningfield Parish Council.

I would be most grateful therefore, if you will include a correction to this effect in the next edition of East Hanningfield News, please, in the interest of historical accuracy.

Yours faithfully, Belinda A. Dixon

Day trips!.....Day trips!.....Day trips!.....Day trips!.....Day trips!.....

This summer's programme is bigger than ever, with an exciting variety of destinations, including many new ones and some old favourites too, so don't delay, book today!

June	Excursion	Adult/Senior
Sun 5 th	Leeds Castle with Jousting Tournament (Entrance included)	£28
Sun 12 th	Warwick	£20
Wed 15 th	Bury St. Edmunds (Market Day)	£15
Sun 19 th	Norwich	£17
Sun 26 th	Tunbridge Wells and Penshurst Place & Gardens (Entrance included)	£22.50
July		
Sun 3 rd	Kensington	£15
Sun 10 th	Windsor	£16
Wed 13 th	Cotswolds	£20
Sun 17 th	Kent Life museum*/river cruise* and Maidstone (*Entrance not included)	£14
Sun 24 th	Brighton	£16
Wed 27 th	130 th Sandringham House Flower Show (Entrance included)	£26
Sun 31 st	Rochester and Chatham Docks*/Dickens World* (*Entrance not included)	£14
August		
Sun 7 th	Margate	£16.50
Sun 7 th	Broadstairs	£16.50
Wed 10 th	Newbury and Highclere Castle* ('Downton Abbey') (*Entrance not included)	£18
Sun 14 th	Clacton	£14
Sun 14 th	Walton on the Naze	£14.50
Wed 17 th	Eastbourne	£16.50
Sun 21 st	Ipswich	£14
Sun 21 st	Felixstowe	£14.50

*Attraction admission not included

Local joining points:

Rettendon Common, Crossroads
East Hanningfield, Windmill
Howe Green

Chelmsford, Retail Market
Writtle, Prestons

For more information visit www.regalexplorer.co.uk or call our booking line on 01702 217587.

VILLAGE DIARY

www.essexinfo.net/easthanningfieldparishcouncil/village-diary-2011/

JUNE 2011

- Thurs 2nd 2.50-3.40 **MOBILE LIBRARY**— Village Hall car park
3.45-4.10 **MOBILE LIBRARY** at Ashley Green.
- Friday 3rd 6 - 9 pm **NGS OPEN GARDEN** at The Limes with wine available. Entry: £3.50, children free. Plants for sale. <http://www.ngs.org.uk/gardens/gardenfinder/>
- Sat 4th 11am-1pm **CAFE BAR** at Bethel Church
- Sunday 5th 8.30am **HOLY COMMUNION** (BCP) 7th. Sunday of Easter at All Saints' Church www.easthanningfieldchurch.org
10am **ALL AGE SERVICE FOR A SUMMER SUNDAY** at [All Saints' Church](http://www.easthanningfieldchurch.org) followed by refreshments.
10.45am **SUNDAY FAMILY WORSHIP** at Bethel Church
2-6pm **NGS OPEN GARDEN** at The Limes with teas and home-made cakes. Entry: £3.50, children free. Plants for sale.
- Wed 8th **GREEN BOX, PAPER SACK, CARDBOARD SACK & BAG FOR PLASTIC RECYCLING** (The following day for Bennetts Ave, Old Barn Lane, Southend Rd &
- Friday 10th 9.30-11.30am **HEALTH VISITOR** at Hanna's Tots in the Village Hall
- Saturday 11th 10am-12.30pm **BOOK SALE & COFFEE MORNING** in the first floor meeting room at the Village Hall.
- Sunday 12th 10.45am **SUNDAY FAMILY WORSHIP** at Bethel Church
11am **HOLY COMMUNION** at All Saints' Church followed by Pentecost Picnic
- Wed 15th 2pm **WI MEETING** at the WI Hall

- Wed 15th 8pm **NEIGHBOURHOOD WATCH MEETING** in the first floor meeting room at the Village Hall
- Thurs 16th 2.50-3.40 **MOBILE LIBRARY** - Village Hall car park
3.45-4.10 **MOBILE LIBRARY** at Ashley Green.
- Sunday 19th 10.45am **SUNDAY FAMILY WORSHIP** at Bethel Church
11am **HOLY COMMUNION** at All Saints' Church
- Wednesday 22nd **GREEN BOX, PAPER SACK & BAG FOR PLASTIC RECYCLING** (The following day for Bennetts Ave, Old Barn Lane, Southend Rd & Tilesworks Lane)
- Thursday 23rd 8pm **PARISH COUNCIL MEETING** in the first floor meeting room at the Village Hall.
- Friday 24th 5-7.30pm **SUMMER FETE** at East Hanningfield School.
- Sat 25th 8.45am **MEN'S BREAKFAST** at Bethel Church.
pm **MUSIC FOR A SUMMER'S EVENING** at All Saints' Church.
- Sunday 26th 10.45am **SUNDAY FAMILY WORSHIP** at Bethel Church
11am **HOLY COMMUNION** at All Saints' Church
- Tues 28th 10am **COFFEE MORNING** at Bethel Church.
- Thurs 30th 2.50-3.40 **MOBILE LIBRARY** - Village Hall car park
3.45-4.10 **MOBILE LIBRARY** at Ashley Green.

JULY

- Sunday 3rd 8.30am **HOLY COMMUNION** at All Saints' Church www.easthanningfieldchurch.org
10am **ALL AGE SERVICE** at [All Saints' Church](#) followed by refreshments.
10.45am **SUNDAY FAMILY WORSHIP** at Bethel Church

- Wednesday 6th **GREEN BOX, PAPER SACK, CARDBOARD SACK & BAG FOR PLASTIC RECYCLING** (The following day for Bennetts Ave, Old Barn Lane, Southend Rd & Tilesworks Lane)
- Friday 8th 9.30-11.30am **HEALTH VISITOR** at Hanna's Tots in the Village Hall
- Saturday 9th **ANNUAL ART EXHIBITION & SALE** at the Village Hall
2-4pm **LADIES AFTERNOON TEA** at Bethel Church.
- Sunday 10th 10.45am **SUNDAY FAMILY WORSHIP** at Bethel Church.
11am **HOLY COMMUNION** at All Saints' Church
6-7pm **EVENING PRAISE & WORSHIP** at Bethel Church.
- Thursday 14th 8pm **PARISH COUNCIL MEETING** in the first floor meeting room at the Village Hall.
- Sat 16th 11am-1pm **CAFE BAR** at Bethel Church
- Sunday 17th 10.45am **SUNDAY FAMILY WORSHIP** at Bethel Church
11am **HOLY COMMUNION** at All Saints' Church
- Wednesday 20th **GREEN BOX, PAPER SACK & BAG FOR PLASTIC RECYCLING** (The following day for Bennetts Ave, Old Barn Lane, Southend Rd & Tilesworks Lane)
2pm **WI MEETING** at the WI Hall
- Sunday 24th 10.45am **SUNDAY FAMILY WORSHIP** at Bethel Church
11am **HOLY COMMUNION** at All Saints' Church
- Tues 26th 10am **COFFEE MORNING** at Bethel Church.
- Sunday 31st 10.45am **SUNDAY FAMILY WORSHIP** at Bethel Church
11am **5TH SUNDAY** Special service at All Saints' Church

AUGUST

- Wednesday 3rd **GREEN BOX, PAPER SACK, CARDBOARD SACK & BAG FOR PLASTIC RECYCLING** (The following day for Bennetts Ave, Old Barn Lane,
- Sunday 7th 8.30am **HOLY COMMUNION** at All Saints' Church www.easthanningfieldchurch.org
10am **ALL AGE SERVICE** at [All Saints' Church](http://AllSaintsChurch) followed by refreshments.
10.45am **SUNDAY FAMILY WORSHIP** at Bethel
- Tuesday 9th 10am-12noon **HOLIDAY PLAY SCHEME** including arts & crafts in the small hall & **SPORTS** on the playing field or in the sports hall at the Village Hall. No entrance charge. Provided by EHPC & CBC
- Sun 14th 10.45am **SUNDAY FAMILY WORSHIP** at Bethel
11am **HOLY COMMUNION** at All Saints' Church
- Tuesday 16th 10am-12noon **HOLIDAY PLAY SCHEME** including arts & crafts in the small hall & **SPORTS** on the playing field or in the sports hall at the Village Hall. No entrance charge. Provided by EHPC and Chelmsford Borough Council.
- Wednesday 17th **GREEN BOX, PAPER SACK & BAG FOR PLASTIC RECYCLING** (The following day for Bennetts Ave, Old Barn Lane, Southend Rd & Tilesworks
- Sun 21st 10.45am **SUNDAY FAMILY WORSHIP** at Bethel
11am **HOLY COMMUNION** at All Saints' Church
- Tuesday 23rd 10am-12noon **HOLIDAY PLAY SCHEME** including arts & crafts in the small hall & **SPORTS** on the playing field or in the sports hall at the Village Hall. No entrance charge. Provided by EHPC & CBC
- Thursday 25th 8pm **PARISH COUNCIL MEETING** in the first floor meeting room at the Village Hall.
- Sun 28th 10.45am **SUNDAY FAMILY WORSHIP** at Bethel
11am **HOLY COMMUNION** at All Saints' Church

DANCE CLUB

NEW DANCE CLASS

TO BE HELD IN
EAST HANNINGFIELD VILLAGE HALL
ONE EVENING A WEEK
BY A QUALIFIED INSTRUCTOR

LATIN LINE DANCE LESSONS

Would you like to learn to dance but don't
have a partner?

Then why not try a new dance class where
you don't need one.

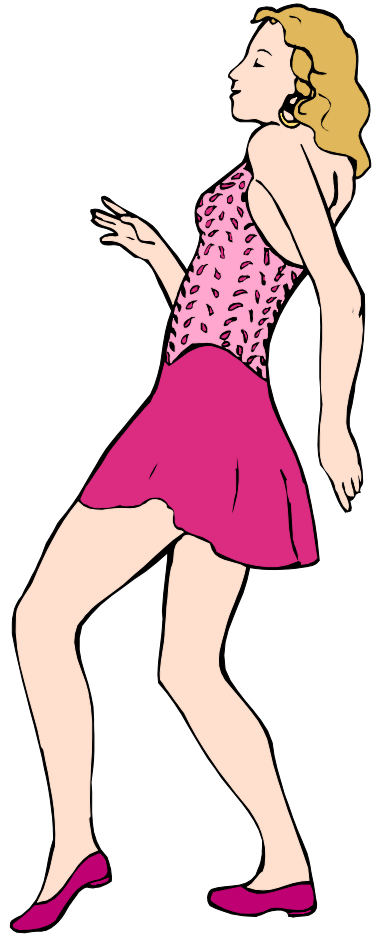
This type of dancing is a low-impact activ-
ity that tones and strengthens calf, thigh,
stomach and buttock muscles. It also im-
proves flexibility, co-ordination, endurance,
balance and posture.

It's fun
It's good exercise
It gives you confidence
It's NOT aerobics
It's better than watching television.

The above class is aimed at beginners, but all are welcome.

For any ballroom/Latin dancing couples looking to join a class -
there is currently a weekly dancing lesson held on Thursday even-
ings at 8.00 o'clock in the Village Hall. If you have some dancing
experience, you are welcome to come and join us.

If you would like more information please telephone: Chris - 01245
400561



NATURE NOTES

Did you know that it is a criminal offence, according to the Wildlife and Countryside Act 1981, to disturb nesting birds?

In practise this means that hedges and trees should be allowed to grow until Midsummer (June) although may be even beyond, depending upon nesting birds who depend upon the weather. Only after June should hedges with nesting birds be trimmed.

This also benefits the English honeysuckle that you can plant to run through the hedge as it is the new year's hanging growth that will then get a chance to flower, improving habitat for wild creatures and sweetening the air in mid-summer with its fragrance. Most hedges, shrubs and trees, the woody plants, should be pruned and reshaped when leafless and the structure of the hedge can be seen in autumn and winter.

Penny Waters



✿ YOGA ✿

East Hanningfield Village Hall

Tuesdays 6.30-7.30pm A dynamic class suitable for people used to regular exercise or with yoga experience. Classes taught in the Ashtanga tradition.

Wednesdays 1-2pm A gentle flowing class suitable for beginners.

Classes also taught in Danbury, at the United Reform Church Hall every Thursday 6-7pm and 7-8pm. Private tuition also available.



**To make inquiries, please contact
Jo Broughton 07932 627574**

FROM REVEREND PAM

A child wrote the following - "In the first book of the Bible, Guinnessis, God got tired of creating the world, so he took the Sabbath off". The onset of summer is always exciting with the promise of warm weather and the growth of the flowers and plants. It reminds us of hope and new life - especially after the severe and long winter which we have had. Once we are into summer some of us feel rejuvenated by the heat of the sun but others feel lethargic and sleepy and would prefer to snooze away the day in a hammock in the garden if it were possible. It is strange too how the summer can begin with enthusiastic gardening which fades within a few weeks as the ground becomes hard, the weather hotter and the novelty of working in the garden wears off.

Spring and early summer seem to give us a natural spirit of thankfulness but so soon we can become accustomed to the season and forget the initial pleasure which we felt earlier. It's helpful to us, and good for us, to sustain a mood of thankfulness - whatever the weather. One Christian Saint has written about the merits of being thankful and recommended starting each day by thanking God for at least three things. This, together with a healthy and hearty breakfast (and even a brisk walk!), could set us up for the day.

It is easy to blame God when things go wrong, or see this as a reason for not believing in or dismissing God. It is harder to give credit to God when things go well or to see this might be related to the existence of a God who wants good for us.

Some of us may prefer to thank God with 'Guinness' rather than 'Genesis' but, however we do it, we can be assured He is not tired and hasn't taken the day off. Enjoy your summer! Every blessing to you

Pam Pennell
pencof.pam@btinternt.com
www.easthanningfieldchurch.org



...AND FROM THE CHURCHWARDENS

We begin where we left off in the Spring issue of E H News – **Connection to the sewer** – this has now been achieved. We have a manhole on our side of the south hedge at last, ready and waiting for connection to the much desired facilities at the church. The PCC authorised the next essential step towards such facilities at their meeting in March – this is to seek quotes for **an architect’s feasibility study**, on which we hope to report real progress in the next issue.

Children’s Corner – The target of “Ready by Easter” was achieved with a few weeks to spare and the most frequently heard comment has been “It looks as though it has always been there”. We are very grateful to David Baldwin for the care and sensitivity with which he made the alterations and there is no doubt of its popularity with the users! If we can maintain that standard when it comes to making space for the additional facilities, we shall be delighted indeed.

Annual Elections – The following were duly elected:

Churchwardens – Ron Attenborough & Sandra Robinson

Deanery Synod Representatives – Martin Harcourt-Williams & Karen Saynor

PCC Members – John Coffin & Gil Gordon, who join continuing members Lindsey Brannon, John Chadwick, Sue Edward, Jackie Feehan, Stan Gordon & Sue Yeo.

Grateful thanks were expressed to Sally Scurrall for her past years of service as she stood down from PCC membership this year.

Congratulations are due to Tara Whitaker on receiving the Bishop’s Certificate for completion of the year-long Children’s Ministry Course. She now takes on the role of Children’s Events Co-ordinator at All Saints’.

Looking forward, we draw you attention to

(i) the Open Garden event at The Limes on The Tye on Friday 3rd June and particularly on Sunday afternoon 5th June when we are responsible for providing the tea and cakes!

(ii) the Pentecost Picnic in the church grounds which will immedi-

ately follow the morning service on Sunday 12th June, and includes events for children.

(iii) “Music for a Summer’s Evening” on Saturday 25th June in the church, followed by refreshments.

(iv) Annual Pilgrimage to Bradwell on Saturday 2nd July. An enjoyable day out for all ages. Contact Rev’d Pam if you would like join a small party who will be going from All Saints’.

As always you are most welcome to attend any of our regular Sunday services which commence at 11.00 am except on the first Sunday of the month, when there are two services – 8.30 am and 10.00 am.



For other matters – please use our web site:

www.easthanningfieldchurch.org

This also has a direct link to the village web site for your extra convenience, if you wish to check on the Village Diary or other information about East Hanningfield.

If you would like to have our monthly information leaflet delivered through your door (without any obligation at all), we shall be pleased to add your name to our distribution list on hearing from you.

**Ron Attenborough (400361) ronald304@btinternet.com
Sandra Robinson (400819) sandra.robinson@btinternet.com
Churchwardens**

EAST HANNINGFIELD PRIMARY SCHOOL



The summer term started with our Royal Wedding “Street Party” lunch and celebration on the school field. Not only was food enjoyed but the children had the opportunity with their partners and teddies to complete a Royal Treasure Hunt, an obstacle course, make a commemorative plate and cup holder and play some traditional games. Children voted it a great success the only complaint was the afternoon wasn't long enough.

The term continues in its busy varied way with assessments including SATs, Book Week, zoo trip for our youngest class, residential trip for our oldest class- and that only takes us to the end of May. After half term – sports events, notably athletics and music festivals add to the enjoyment of the summer term.

You are invited to the PTA **School Summer Fete** on **Friday 24th June, 5pm** on the school field.

Linda Findlay

BOOK SALE

The next sale of nearly new books is on **Saturday 11th June** in the upstairs meeting room at the village hall, from **10am to 12.30pm**. There will be tea, coffee, cakes & biscuits, and the chance to have a leisurely browse and a chat. As usual, the box for donations – preferably recent paperback fiction-will be in the village shop during the week prior to the sale. We now have a good stock of children's books and welcome younger readers who would like to look for a bargain. Proceeds to Hanna's Field Charity and All Saints' Church.

Jackie Feehan 400862

EAST HANNINGFIELD PRESCHOOL

The Committee and fundraising team would like to say a **huge** thank you to everyone who supported our Pamper and Wellbeing night in April. Just over £600 was raised which is already being put to good use.

The pre-school has recently become an approved provider for 2 year old funding from Essex Early Years. If you are interested in learning more about this funding please contact the pre-school on the contact details below.

We have recently started lunch club in which the children are invited to have lunch as a group which commences after core session time on Mondays, Tuesdays and Thursdays. This is open to children aged from 2 ½ plus and is free to funded children aged 3+.

If your child is 2+ and you are thinking of starting with the pre-school please contact us either by email on ehps1@live.co.uk or by phone on 07732 951613 during session hours, which are: Monday, Tuesday and Thursday from 9.15am to 1.15pm and Wednesday from 9.15am to 12.15pm.

Louise Warley, Chairperson



HANNA'S TOTS

Tots are returning back to normal after the recent bank holidays. We have a new bouncy castle for the children to enjoy. As the weather improves we shall venture outside for play with the bikes and scooters.



We still have regular visits from Reverend Pam and the health visitor, the new health visitor dates are 10th June and 8th July please feel free to come along if you would like your child weighed or to discuss any aspect of your child's health. It is lovely to see some new friends with new babies coming along to these dates.

Sessions run from 9.30 – 11.30 every Friday in the village hall, entrance via the back door. Come along for a chat and cup of tea and enjoy watching the children play.

We are also a toy library and many toys and equipment are available to borrow or hire as we know sometimes young children get attached to certain toys and won't leave without them!

Once again thank you to all those who help to tidy away at the end.

Hope to see you Friday!

Savannah Shankster 400 979



BETHEL CHURCH—Don't leave it to the last minute.

I'm sure we've had that said to us before, whether it was your mother, a teacher or your boss.

It's good advice. Particularly when you are given a deadline, just like Karen gives us for submitting articles for the village magazine.

But human nature tells us to put it off until tomorrow. Then on the eve of the deadline, one is scratching ones head to think of something inspirational to share with the village.

Leaving things to the last minute one can also risk getting things wrong. Something misspelled or a glaring typo. Church magazines are full of them, here's a few of my favourites:

"The Wesley Guild Walk will start from the Three Hoops car park at 10am. Please bring a packed lung"

A Baptist Church near Ambleside recently announced that...

"The meeting will be gin with prayer"

And worshippers at St Mary Magdalene, Ashton-on-Mersey were invited to stay behind after a recent carol service to enjoy...

"Coffee and mice pies"

(No one's heard a squeak out of them since)

There's an old saying, Why Do Today What You Can Put Off Until Tomorrow?

I am a moderate procrastinator. Even when I believe that I would be best served by finishing a task (say, finishing this article and sending it to Karen), I will occasionally put it off in favour of some short-term reward (like a much needed caffeine fix).

The same thing can be said when we are confronted with more deeper issues, such as "what's life all about?" or "Is there a heaven or is there a hell?"

We can ponder on such things briefly and the moment is gone or,

as I did for many years, just swept them under the carpet.
But as we are reminded so often, sometimes tomorrow never comes. If you're asking such questions, we believe the bible has all the answers. So why not come and join us at one of our many meetings. We'd love to see you.

Here's when we meet:

- Sunday Family Worship – 10.45am
- Tuesday Ladies Meeting – 10.30am
- Wednesday Young Adults – 8.00pm
- Thursday Bible Study – 7.45am

Other dates for your diary are in the Village Diary in the centre pages of this News.

Roydon Hearne

Baddow Plumbing Services



**Replacement Boilers
&
Bathroom Suites**



**All Domestic Plumbing Work
Undertaken**

Free Estimates



01245 - 358355

Stephen Bryan

VILLAGE FETE 2011



September may be several pages away on the calendar but this year's fete is already taking shape, and we wouldn't like anyone to overlook the date – Saturday September 10th! We have some new attractions lined up this year, and plenty of old favourites. Many people who ran stalls last time will be doing so again, and would be happy to have additional support, so could you consider giving an hour or two to lend a hand? Or, could you spare some time during the morning, or at the end of the fete, to help set up or clear up? The more helpers we have, the quicker it all gets done!

Mums and Dads, Grandparents – did you ever make a miniature garden when you were young? Now there's an opportunity to encourage your children to enter a competition for the best miniature garden, to be displayed and judged at this year's fete. A box or tray approximately 10"x12" should be the base container; then earth or sawdust, pebbles, sticks, broken tiles, coloured glass etc can be added to help create a colourful, imaginative garden. There will be two age groups : Under 7s and 7-11 (on 1/9/11). Entry forms will be in the Village shop at the end of August, and in the next edition of the East Hanningfield News.

Jackie Feehan 400862

Jackie@feehan.vispa.com

**NGS GARDEN OPEN AT THE LIMES ON
FRIDAY 3RD JUNE 6 - 9 PM WITH WINE AVAILABLE &
ALSO SUNDAY 5TH JUNE 2 - 6 PM WITH TEAS
(HOME-MADE CAKES)**

ENTRY: £3.50, CHILDREN FREE. PLANTS FOR SALE.



NEIGHBOURHOOD WATCH

Burglary - Crime Pays?

A house on The Tye was burgled in March and valuables and a laptop taken as well as some damage being done. The valuables were family heirlooms and the laptop had personal details on it so it was a double blow for the family involved. Sadly it's not the first burglary on The Tye. NhW statistics show that since the start of 2007 seven houses on The Tye have received unwelcome visitors (with no arrests or goods recovered!). How can you avoid becoming a victim?

Don't be complacent – some parts of the parish are more at risk than others but the statistics show it can happen to any of us. Get into the habit of taking simple precautions.

Receive local NhW emailed alerts - by receiving these you will be part of a growing local network of people who are aware of what's going on, receive police updates on local crimes etc, and if you see or know something it's easy to let NhW know.


Look on the East Hanningfield NhW website. It gives simple tips on how to reduce the risk of being burgled but also provides updates on scams, rogue callers, and NhW and police phone numbers etc.

Do this and together we may stop crime paying for some people at least!

Next NhW Meeting: Wednesday 15th June, 8pm – Village Hall Meeting Room: Local residents are welcome. It's usually attended by a police officer. If you have an issue or want to know more about East Hanningfield NhW or you have ideas about how to reduce local crime come along!

If you want to receive e-mailed NhW crime alerts or know more about local crime statistics contact me

Geoff Dickman, East Hanningfield NhW.

 **Ch400450 / 07968-112179**

geoffangela@btinternet.com

W. I. NEWS

It seems no time at all since I last wrote our W.I. news. Last month we were very busy. Our Charity Coffee Morning raised £258 and the following week at our meeting for Help for Heroes, with money on the door and on the sales table, just over £200 was raised. Both very worthy causes and our thanks go to all of you who came along to support both events.

We have recently gained a few new members so we are very pleased about that. Why not come along to see what we are all about? Meetings in our hall on the third Wednesday of the month at 2pm, with slight variations in January, August and December.

Do give me a ring,
Lilian Crace 400288.

Godfrey Home Improvements

**Interior & Exterior
Decoration
General Property
Maintenance
Trustworthy and reliable
service**

Free Estimates

Contact: Pete Godfrey

Phone: 01245 400650

Mobile: 07730904377

E mail:

Peter2godfrey@btinternet.com



EAST HANNINGFIELD ANNUAL ART EXHIBITION & SALE



**East Hanningfield Village Hall Saturday
9th July 10am until 5.30pm**

Entry £1.50 per adult - children free

**Artists wishing to exhibit should contact
Wendy on 01245 400797 by the end of June**