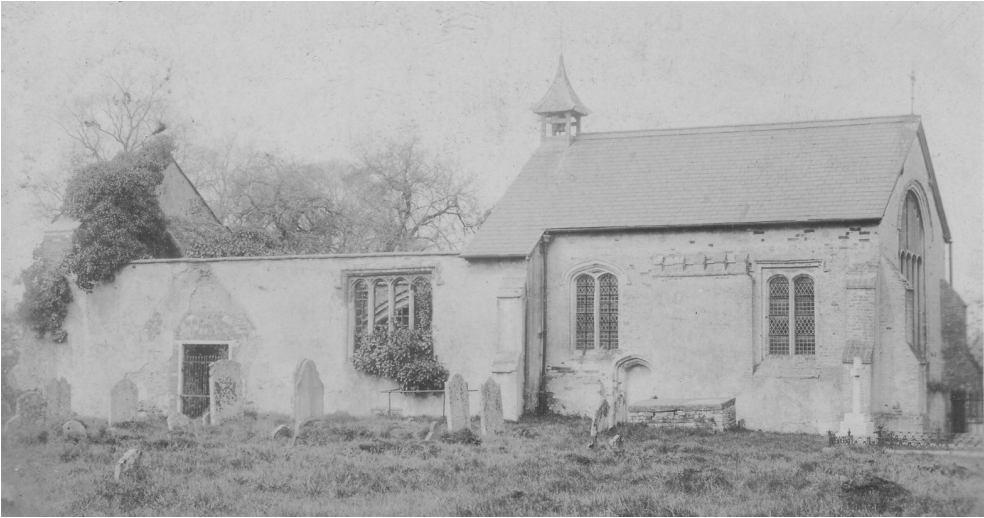


***EAST
HANNINGFIELD
NEWS***

*Autumn 2010
No. 133*



FROM THE ACTING EDITOR

East Hanningfield News is published by East Hanningfield Parish Council and delivered by volunteers free to all homes in the parish. Inclusion of articles or advertisements does not signify endorsement by the Parish Council.

**Copy date for the next edition is
Friday, 12th. November 2010**

Please continue to send articles and advertisements to me at
karen.plumridge@btinternet.com or 2 Clinton Close.

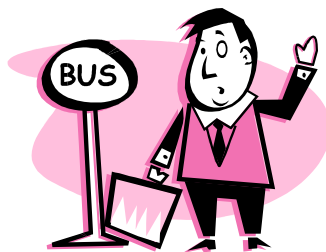
COVER PHOTOGRAPHS

The top photograph, which was taken over 100 years ago, is of the old church which burned down in December 1883. In the early part of the nineteenth century it had fallen into disrepair and after years of fundraising it was closed for a year for repairs, opening on 14th. April 1843. The nave contained wall paintings dating from about 1300 depicting Adam digging and Eve spinning, St. Katherine holding a wheel and a book, and Cain and Abel. Following the fire, the chancel which retained its roof was used as a mortuary chapel.

The lower photograph shows the present church about 100 years ago. The foundation stone of the new church was laid in July 1884 and construction was completed in June 1885, which is why during the Summer there were celebrations to mark its 125th. Anniversary.

The photograph is detail taken from a postcard sent from the front in April 1915, but was probably taken before the war began.

PARISH COUNCIL



Those of you with concessionary bus passes will probably have noticed that they run out at the end of March. This is because from April administration of the bus passes will transfer from the Borough Council to Essex County Council. In preparation for this change, the County Council is consulting users on what they consider to be the most important aspects of the bus pass provision. At this time of serious cost cutting you can be sure that any aspect of the provision that is not shown to be highly valued will be in danger of cancellation. At the moment these passes can be used from 9am until midnight on weekdays and all day on Saturday and Sunday, but the national requirement is that they should be usable from 9.30am until 11pm on weekdays and at all times at weekends and bank holidays. There is therefore scope for a reduction of the time they can be used.

The consultation period lasts until 30th. September so you still have time to tell the County Council what provision is important to you. Consultation forms have been available in the Post Office since July and should also be available in libraries and Council offices. You can complete the form online at www.essex.gov.uk/buspass/ or telephone 08457 430 430 to request a copy. The Parish Council is concerned that anyone who presently catches the 9.24 to attend doctors' appointments at Great Baddow would have to wait until the 11.18 to use the bus pass, should Essex return to the 9.30 start.

Still on the subject of buses, there is to be a new **Service 5 on Thursdays**. It will leave the Windmill stop at 9am and travel through Bicknacre, Danbury, Woodham Walter and Beeliegh and arrive at the Maldon Tesco store at 9.49 and the Maldon Morrisons at 9.55. The return trip will leave Morrisons at 11.45, Tesco at 11.50 and arrive back at East Hanningfield at 12.38. During the first part of the journey, between East Hanningfield and Bicknacre

it will be a “Hail and Ride” service. Service 5 runs from 2nd September. Please note that to accomplish this new provision, the number Service 3 08:54 to Chelmsford on a Thursday has been withdrawn.

Responses to the Parish Plan Questionnaire seemed to indicate that there was local interest in increased provision of allotments. Our neighbouring parish, Sandon has identified a plot of land beside the Southend Road at Howe Green as a possible allotment site, but has had so little interest that, at the moment, they are unable to proceed with the proposal.



If you are looking for an allotment and would like one at Howe Green, please contact the Clerk to Sandon Parish Council by email at sandonparishclerk@btopenworld.com or on 01245 227734, as soon as possible, because the proposal is going to be shelved if too few registrations of interest are received.

Still on the subject of the Parish Plan, editing is progressing and the finished document is expected to go to print in mid September. Although still very much a draft document, it looks as though it is going to be a 24 page A4 booklet for the Plan with a separate loose leaf, updateable action plan as an insertion. It is intended that every household and business should receive a copy, and there will be a large print version available to those who need it. It will also be accessible on the Parish Plan website www.essexinfo.net/easthanningfield-parishplan/ where there is a “Listen” facility that will read the text to you. This facility is also available on the Parish Council’s website.

Another activity requested in the responses to the Parish Plan Questionnaire was more village dances, so some of you will be pleased to learn that there is going to be a charity barn dance at the Village Hall on Saturday 18 September to raise funds for Chelmsford Mencap’s adult events. The barn dance starts at

7:30pm with music and a caller provided by George and the Trombones. There will be a fish and chip supper, or alternative by previous arrangement. Guests can bring their own drinks. Price: Adults £14, Children £10. For tickets please contact Vanessa Hellier Tel: 0797 657 8868.



PC continues to have site meetings with County Council Highways officers to discuss local highways problems. This can be a frustrating exercise as actions agreed last year are still awaiting funding. Nevertheless, new projects have recently been added to the list and are being investigated for viability. In particular, a reduction in the 40mph speed limit in Old Church Road to 30mph is to be considered by the Traffic Management Team at County Hall when they conduct their review of speed limits. A reduction of the speed limit along the Tye will also be considered.

Since the general election there have been many policy outline announcements coming from central government which might affect PC, and in most cases the consequences cannot be ascertained until the details are published, but some proposals such as the requirement for a parish poll for increasing the council tax, the publication of individual expenditure items over £500 and the annual audit by private auditors rather than the Audit Commission look as though they are going to cause increases in expenditure, so developments are being monitored with interest.

PC Meetings for the next quarter will continue on the fourth Thursday of the month, at 8pm in the first floor meeting room at the Village Hall. If you come along to listen or participate in Public Question Time, please use the side entrance, as the connecting door with the rest of the Hall will be locked.

Karen Plumridge, Clerk to the Parish Council

☎ 400628 ✉ karen.plumridge@btinternet.com

🌐 www.essexinfo.net/easthanningfieldparishcouncil



Mid-Essex Pilot

Easy access to services and information

www.villageagentsessex.org.uk

Putting people in contact with organisations that provide services they need.

Your local Village Agent can help you with:

- **Local Social groups, leisure and learning**
- **Welfare Benefits**
- **Fire and home safety**
- **Health and Fitness**
- **How to travel**
- **Services and carers' support**
- **Volunteering**

To talk to a Village Agent or to arrange a confidential home visit, please call FREE on 0800 9775858



BOROUGH COUNCILLOR'S MESSAGE

Whilst the rest of the world worries about wars and credit crunches it is fulfilling to live in a place like East Hanningfield. Apart from our village's natural beauty it is an enjoyable community because of the commitment and passion of many people who work and live here. I still dream of a community suite at the village hall and perhaps one day all the planning that went into that project will be fulfilled, but meanwhile the commitment of those who run Hanna's Field Charity is a contributor to our lives in the community and many years of effort by Mike, Jenny, Colin and Jackie (especially with the fete) and many others is worthy of grateful thanks.

I attended our school's leaving assembly and was very impressed with our youngsters. What great ambassadors they will be for our village and school as they move on and what tremendous achievements our school notched this year.

Reverend Pam and John seem to have been in East Hanningfield for ever, our Parish Church is reaching out to the community and that is very good. Stan is no longer the Church Warden and so has just stepped down from almost 20 years as a school Governor.

Thanks are due for his valuable experience and service.

I have spoken all over Essex about our Geoffrey Close/Chennels development . It is an exemplary and fine project which respective chairmen of our Parish Council Peter and Les have supported from the start especially the concept of ownership which was then groundbreaking and now best practise. The residents there have quickly assimilated into the community because of their connections some might say roots.

I am proud to be a member of our award winning Parish Council and thank Karen an experienced professional who contributes with members to make our work enjoyable, productive and relevant.

It is a privilege to represent this community and I thank you for that. Best wishes to all

Mike Harris

Member for Bicknacre East and West Hanningfield, Chelmsford Borough Council 400142

michael.harris@chelmsford.gov.uk

THE MOST THOROUGH CLEAN EVER SEEN OR IT'S FREE !

Satisfaction Guaranteed.



That's right if you're not happy with the Cleaning carried out, we will come back and re clean for FREE.

If you're still not happy a full refund will be given.

Before

After



We specialize in :

- Carpet Cleaning
- Upholstery Cleaning
- Carpet Stain Removal
- Driveway/Patio Cleaning
- Driveway/Patio Sealing
- Block paving, tarmac, imprinted concrete & decking
- Commercial & domestic
- Customers references on request
- Local family run business

10% OFF ON PRODUCTION OF THIS ADVERT

For a Free no obligation quote call Premclean on:

01268 730074

Based in Wickford

Fully insured & professionally trained.



EAST HANNINGFIELD PRIMARY SCHOOL

The school has had a particularly successful year and not only academically.



In the Chelmsford School Sports Partnership Minisports competition involving 80 primary schools year 2 came first by achieving the highest individual average score. The school football team won the Essex Small School Tournament in Colchester. The rounder's team won its group in Chelmsford. In their group at the Maldon District Sports the athletics team won the Field Cup, the Track Shield and shared the relay trophy. Congratulations to all competitors.

Our musical talent was highlighted, not only at the area festivals, but also at our music afternoon. I am amazed at the standards some children achieve. I hope they inspired other children to start learning an instrument and will continue developing their skills..

We hope those leaving school this year will continue their involvement in sports and music alongside the more academic subjects in their respective secondary schools.

After seven years in primary education our 20 year six pupils entertained us with their Leavers' Assembly. The confidence and talents shown in their final year of primary school are impressive to all the staff, who in this small school, have all played their part in supporting their development and remember how far they have come. We wish them continued success and enjoyment in learning as they continue their education beyond East Hanningfield.

Thank you to all those who have supported our school events over the year. We look forward to welcoming all pupils back after an enjoyable summer holiday on Monday, 6th September.

Linda Findlay (headteacher)

Intercounty

Demand continues to be high for properties with easy access to town and we are always in need of similar good quality housing stock for sale or to let; so if you're positive about moving house and seriously want to get moving, give me a call

01245200024

www.intercounty.co.uk/carolphillips

New Instruction !

Howe Green

£310,000

Extended and much improved 3 bedroom semi-detached, feature fitted kitchen/dining room, large lounge with Granite/Limestone fireplace, fully tiled en-suite and family bathroom, generous driveway parking with garage, rear garden backing farmland. Must be viewed.



Coming Soon...

Howe Green £850,000

Set on approx 8 Acres, versatile property consisting extended 3 Bed detached house plus separate bungalow Annexe, private garden, triple garaging with lapsed planning to convert to bungalow, extensive yard with secure barn, 6 brick built stables, paddocks with field shelters. Masses of potential. Call now to register interest.

07984192938



Buying, Selling or Letting?
Call Carol Phillips your local Property Professional

01245200024

BUS TO BASICS

Have you ever wondered where the LOCAL buses go or wondered how you could use it to get to a general store or cash machine? East Hanningfield is served by the 1, 3 and 11a buses which run to Southend, Rayleigh, Chelmsford and Canvey town centres. The service 11 route alone passes *6 general stores, 4 Pharmacy's, and 5 cash machines.*

How to access the Chelmsford hospitals

To access **Broomfield Hospital** get off service 1, 3 or 11a at Chelmsford Bus Station and catch service 47, 52 or 70.

To access **St. John's Hospital** get off service 1, 3 or 11a at Chelmsford Bus Station and catch service 14, 42, 52 or 100.

How to access the Southend Hospital

Service 3 and 11a give access to Southend Hospital. Just get off at Carlton Avenue (service 11a) or at Southend Travel Centre and catch service 21a, 7 or 20 to the hospital.

How to access the GP in Danbury

It is possible to access the GP in Danbury by bus. For example, get off service 3 at Great Baddow, opposite The Blue Lion, on Bad-dow Road and catch the 31 to Danbury, getting off at Eves Corner.

If this too far to walk or does not get you to the surgery on time? Have you considered Community Transport? See over.

How to access the medical centre at Sainsburys, Chelmsford

North Chelmsford NHS Healthcare Centre provides patients with an 8am to 8pm GP service, open to registered and unregistered patients with or without an appointment, 365 days per year. From blood pressure checks to contraceptive advice, minor cuts and bruises to statins and sprains, the Healthcare Centre offers a wide range of services from the Sainsbury's site in Springfield: 2 White Hart Lane, Chelmsford CM2 5EF.

To access this site get off service 1, 3 or 11a at Chelmsford Bus Station and catch service 48, 71 or 72.

Essex County Council & Rural Community Council of Essex

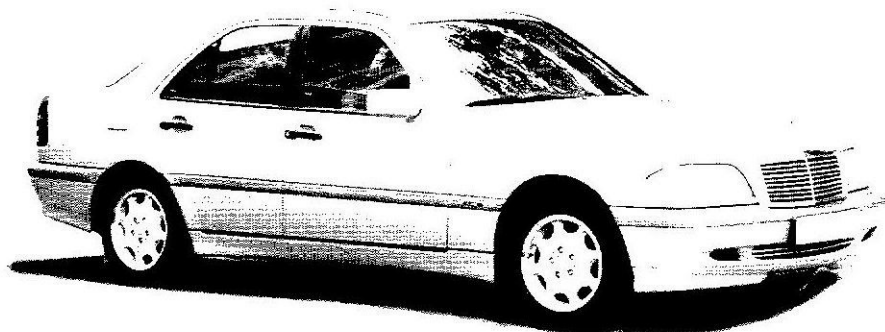
HANNINGFIELD MOTOR CO



MOT CENTRE

**SERVICING
DIAGNOSTICS
REPAIRS**

**MOT
£40**



TELEPHONE: 01245 400406

OPENING HOURS: MON-FRI 8.30AM TO 5.30PM

SATURDAY 9.00AM TO 1.00PM

Unit 23, East Hanningfield Industrial Estate, Old Church Road, East Hanningfield, Essex CM3 5BX

COMMUNITY TRANSPORT

Chelmsford Community Transport Ltd provides a door to door service for anyone who cannot use public transport to get to their destination. The service currently operators from Mon – Thurs 9:30 – 5:00, Fridays 9:30 to 4:00 and needs to be booked two days in advance. In order to use the service you need to be a member of the scheme, which costs £5 annually. Simply telephone 01245 280 732 for a membership form.

An example of fare charges are shown in the table below

Miles	Contribution (£)		Miles	Contribution (£)	
	Single	Return		Single	Return
0-1	£1.90	£3.80	3-4	£3.20	£6.40
1-2	£2.40	£4.80	4-5	£3.50	£7.00
2-3	£2.90	£5.80	5-6	£3.80	£7.60

Baddow Plumbing Services



Replacement Boilers
&
Bathroom Suites



All Domestic Plumbing Work
Undertaken

Free Estimates



01245 - 358355

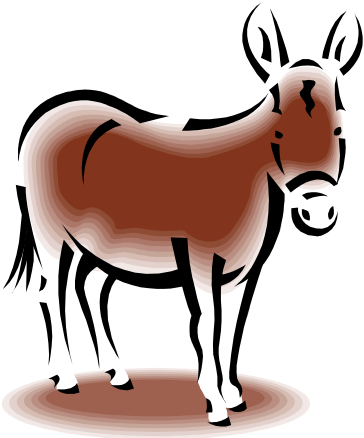
Stephen Bryan

VILLAGE FETE 2010

The place to be on **Saturday, 11th September** will be Hanna's Field! Be there at 1.30pm when the fete will be opened by our special guest and local celebrity, Alex from Heart Essex. Hear him on Heart 96.3 and 102.6 FM weekday mornings!



Later in the afternoon, we welcome back Ali Barmy to entertain the children, as part of the programme of events. This year there will be donkey rides, as well as swing boats, roundabouts and the return of the inflatable assault course challenge. Not forgetting stalls and a variety of refreshments, from beer tent to barbecue!



If you can't join us on the day, please make sure you don't miss out completely by buying some draw tickets. Two books will have been delivered with this News and you can buy more in the village shop. There are some excellent prizes to be won. Donations of home made cakes, tombola prizes and books for the book stall will be gratefully received, as will any offers of help.

Let's hope for another gloriously sunny and successful afternoon!

Jackie Feehan
Contact me on 400862
jackie@feehan.vispa.com



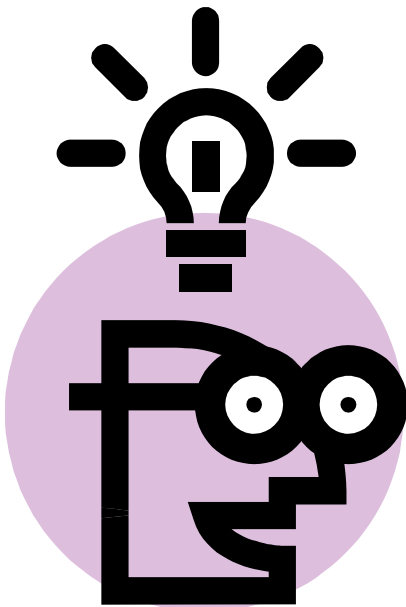
SHOW OFF YOUR MUSCLES!

Strong arms wanted to help set up the Fete beforehand and tidy away afterwards.

Could you lend a hand for a couple of hours at 10am and/or again at 5pm on Saturday, 11th. September?

If you can help contact Jackie

400862/jackie@feehan.vispa.com



IDEAS WANTED!

Have you got an idea for a new event? Would you be prepared to organise it with help from the Charity?

We are always looking for new ideas for social functions that villagers would want to support and that will bring local people together.

Contact HFC through Colin 401050, Jenny 400411 or Mike 400628

BETHEL CHURCH—Wonderful Grace!

A man dies and goes to heaven. St. Peter meets him at the pearly gates. St. Peter says, "Here's how it works. You need 100 points to make it into heaven. You tell me all the good things you've done, and I give you a certain number of points for each item, depending on how good it was. When you reach 100 points, you get in."

"Okay" the man says, "I attended church every Sunday"

"That's good," says St. Peter, "that's worth two points"

"Two points?" he says. "Well, I gave 10% of all my earnings to the church"

"Well, let's see," answers Peter, "that's worth another 2 points. Did you do anything else?"

"Two points? Golly. How about this: I started a soup kitchen in my city and worked in a shelter for homeless veterans."

"Fantastic, that's certainly worth a point," he says.

"hmmm...," the man says, "I was married to the same woman for 50 years and never cheated on her, even in my heart."

"That's wonderful," says St. Peter, "that's worth three points!"

"THREE POINTS!!" the man cries, "At this rate the only way I get into heaven is by the grace of God!"

When we speak of God's grace, we could mean all the good gifts we enjoy freely in life. There are so many. We could spend a lifetime celebrating them: blackberries, buttercups, walks down Back Lane on balmy summer evenings – the list is endless. For us, the gift of life includes the wondrous gift of being human.

We also use the word grace to mean the secondary gifts we perceive in the skill and intelligence as creatures. We speak of the beauty of a lion or a dancer, saying they exude grace, discerned in the vitality and fluidity of their movement. When we use the word graceful to describe a creature, it's because the creature is being expressive of its God-given self.

There is another way of speaking about grace that is more about redemption than about creation. Redemptive grace is focused most clearly in the life, death, and resurrection of Jesus. The grace of

Christ can inspire us in such a transformative way as to change our awareness of ourselves, of our potential as human beings and as humankind, and our awareness of God's gracious purpose for us and through us - and most importantly, what He has done for us.

Thankfully, it's not 'Brownie Points' that will get us into heaven, it's faith and trust in Jesus Christ and through His grace.

Please come and join us (not to earn points, of course), we meet on **Sundays at 10.45am** Other dates include:

September

Saturday 11 **Village Fete** (be sure to check out our golf game)

Sunday 19 **Praise & Worship Evening** at 6.00pm

Saturday 25 **Café Bar** from 11.00am to 1.00pm

October

Sunday 3 **Harvest Family Service** at 10.45am

Saturday 23 **Café Bar** from 11.00am to 1.00pm

Every blessing from all your friends at **Bethel Evangelical Church**
T. 01245 400665



**ARE YOUR BRAMBLES
FORCING PEDESTRIANS
OFF THE PAVEMENT?
IS YOUR CONIFER GIVING
PASSERS-BY A SLAP
AROUND THE FACE?**

**IT'S NOW THAT TIME OF YEAR TO START
HEDGING (& DITCHING. IS YOUR
BLOCKED DITCH CAUSING YOUR
NEIGHBOUR'S PROPERTY TO FLOOD?).**

HANNA'S FIELD CHARITY

This year's art exhibition was once again organised by Wendy Thomas and Jenny Mouser, ably assisted by a number of their friends and family and raised more than £1,300. Thanks to everybody who supported the event including the artists who provided the pictures, the visitors who purchased them and the local householders who displayed the publicity boards in their gardens.

This year's village fete is on Saturday 11th September. Would you be able to give some physical help with setting up and clearing up at the fete? This in turn might give you an insight into the fundraising that takes place with Hanna's Field Charity, All Saints Church and the Parish Council. Perhaps you are new to the village and would like to get involved in some small way to make new friends and become part of the village community. We are always looking for new ideas for social functions that villagers would enjoy and that will bring people together as a community. To find out more please contact any member of the HFC, the fete committee or the Parish Council.

Many of the current committee have been in post since the Charity was founded over twenty years ago and have achieved a tremendous amount in that time, but there is so much more we could do with fresh ideas and new faces. Being a trustee is not onerous, only six informal meetings a year, and the opportunity to make a real difference in the village, meet other residents and become involved in something worthwhile is actually enjoyable. So, don't be shy, if you're interested give us a call.

The Hall, playing-field and sports/tennis court are available for bookings which can be made via Sharon Crow on 01245 400965. Please make use of the facilities which are available at a discounted rate to villagers.

Colin Warren
Chairman Hanna's Field Charity
01245 401050 cwarren132@aol.com

PRESCHOOL

At the end of the Summer term, there were lots of goodbyes to say, both to staff and to our 'Big School' leavers. We will miss them, but wish them all the best for the future. Also, we welcomed Serene, our new supervisor, who has come to us from Billericay. Sports day and the end of term party were a lot of fun, as usual.

East Hanningfield
Pre-School



Term starts again on Monday 6th September, and our first fundraising exercise will be at the Village Fete on Saturday 11th September, where we will be running a Bottle Tombola, as well as the ever-popular Teddy Tombola. Please bring any donations along to a Pre-School session or to Hanna's Tots on Friday.

If your child is 2+ and you are thinking of starting in September, please contact me on the number below, or ring

the pre-school number (07732 951613) during session hours, which are Monday – Thursday, 9.15 – 12.15, in the Village Hall. Also, we are looking for new committee members, so please come along to the AGM (date to follow): If we have no committee, the Pre-School cannot open.

Fiona Ward, Secretary
01245 400944



HANNA'S TOTS

The Summer term seems to have flown past, but as many of you know, we continued to hold sessions during the holiday with older siblings being welcome.

Recently, the Health Visitor has been coming along to sessions once a month, to weigh children and discuss any aspect of your children's health.

She will be coming again on **24th September** and **22nd October**, so please make a note in your diaries. You don't have to be a 'regular' to come along.



If you are not sure how to find us, we meet in the Village Hall on a Friday morning, entrance via the back door! Sessions run from 9.30 – 11.30, but we all know that small children do their own thing, so feel free to pop in at any point during those times. Also, we are a toy library and have a wide range of toys, books and baby equipment to borrow or hire.

If you are interested in taking part in the running of the sessions, please let Rose or me know; we are always grateful for a helping hand, and it means that we can share the workload.

See you Friday!

Fiona Ward 01245 400944



NEIGHBOURHOOD WATCH



Our small Committee, and group of liaison co-ordinators met again in June. As ever, we discussed the incidents that had been reported by our local liaison officer and PCSO. By its very nature, the help we get from our Police is reactive, rather than proactive. Incidents happen, need to be investigated and crime solved. Obviously, it would be nice if the once traditional Bobby were to pound his beat in our village, providing reassurance, and chastising young miscreants in equally traditional manner, - the proverbial clip round the ear or its equivalent. Unfortunately life is not like that now; we have to accept advances in technology, human rights and the other constraints that have been placed on our constabulary.

So what is Neighbourhood Watch? There is a co-ordinating committee, who meet periodically. However, the concept is worth nothing, if we, the inhabitants of our village do not take responsibility for ourselves and our neighbours, particularly the infirm. Even if we do not know our neighbours as well as we might wish, it is important that we remain alert to possible crime affecting those around us, as well as ourselves.

We, the Committee and Co-ordinators can do our bit by circulating news (by e-mail to those prepared to join the loop to be kept up to date). We also carry a Police marking kit, available to anyone wishing to mark up their valuable effects, - and photograph them, so that, in the event of loss, investigators may know what they are looking for.

At a technical level, we need to be alert to the scams of the age. Any uninvited communication seeking details of a bank account or credit card on any pretext should be regarded as suspicious. In the Spring issue of EH News, some we know about were specified.

If you would like to be kept up to date on events happening around us, please provide your co-ordinator, Geoff Dickman, Mike Plumridge or Martin Harcourt Williams with your e-mail address; we will try not to flood you with messages.

CONTINUES ⇒

RECENT CRIMINAL ACTIVITY

In the last month Bicknacre Road residents seem to have been targeted. A house was burgled with approximately £2,000 worth of property stolen and an attempt was made to break in to another house. Hay was stolen from a stable and in what might have been a related incident a young rider on a horse was followed by two men in a van.

Keep your eyes open for suspicious activity and if you have any information regarding the above please contact the police. The advice as always is if you see or hear of anything remotely suspicious call Essex Police asap on their non-emergency number 0300 333 4444. And if you have information on any crime you can call Crime Stoppers anonymously on 0800 555 111.

Geoff Dickman, East Hanningfield NhW.

☎ 400450 / 07968-112179

geoff.dickman@benlineagencies.com

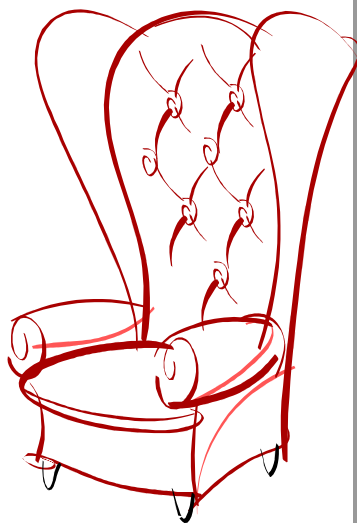
Simon Houlding Upholstery

Est. 1997

Specialist in Restoration of Antique Furniture
Modern Suites & Loose Covers
High Quality Bespoke Furniture Made to Order
Repairs & Advice
French Polishing
Wide Selection of the Latest Fabrics & Trimmings

Unit F, Stock Chase,
Heybridge,
Maldon CM9 4AA
Tel. 01621 859484
Mob. 07990 972676

www.houldingupholstery.co.uk



EAST HANNINGFIELD W.I. NEWS

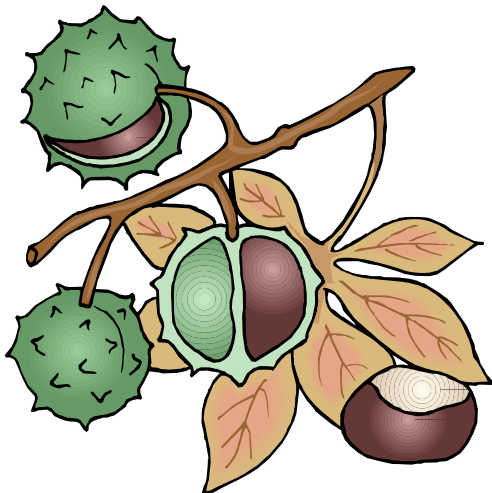
Well, here we are enjoying lovely weather which is good for the childrens school holiday. In June we had a very successful Strawberry Tea with 60 ladies present, which certainly kept us on our toes. In July we hosted an afternoon tea for some ladies from Little Wakering W.I.



In October our members will enjoy our **Harvest Lunch** and this year we've decided to give ourselves a break and have caterers in.

We mostly meet in our hall on the **3rd Wednesday** of the month at **2pm** with the exception of slight changes in January, August and December. If you felt you could like to give us a try, you will be most welcome. Give me a call if you are interested.

Best Wishes Lilian Crace 400288



Dear Everyone,

I would like to introduce myself.

My name is Edward Bear and I am a large honey-coloured teddy bear with quite big ears. I think I am quite handsome, although a little on the tubby side but that makes me rather cuddly I think. I am not too good at walking but I do enjoy sitting in a chair in church, listening to Bible stories and helping to sing songs. I don't move much myself (perhaps I am a little lazy) and so I watch the everyone else doing actions to the songs. I don't say very much out loud either - but I do think a lot.



I shall be starting to visit All Saints' Church in September for a special service which has my name - Edward Bear Club. I have to have special clothes to wear and I hope there will be children who can dress me in the right colours. My club is specially suitable for children from 0 -5 years old who bring their parent or carer with them. After the service we can have a little something to drink and toys to play with. There will be tea and a time to chat for the adult person you bring with you which will keep them happy while we do the more important thing of playing.

I do hope you will be able to come along so that we can make friends - I would so love to meet you.

My Edward Bear Club starts on Monday 13 September at 2.15pm in All Saints' Church and will be on the second Monday of every month after that (11 October , 8 November, 13 December). Looking forward to seeing you.

Your friend

Edward Bear

(If you want to find out more, please contact Revd Pam Pennell.
Email: pencof.pam@btinternet.com Tel: 01277 841179.
Church website: www.easthanningfieldchurch.org)

FROM ALL SAINTS' CHURCHWARDENS

As reported in the last EH News, Stan Gordon stood down as churchwarden in the Spring after eight years in the post. This is to let you know that I have now been appointed in his place, to work alongside the other churchwarden Ron Attenborough. My name is Sandra Robinson and I have lived in the village for thirty one years. My background is that I have spent all my working life in education, having been a headteacher and an inspector. Many of you may remember my late husband - Mick the Runner - who was often to be seen either running around the village or enjoying a pint of ale in the pub. Stan has left very big shoes for me to try to fill but I shall do my best and I am sure that I can rely on the support of the many friends I have made whilst living in East Hanningfield.

Music for a Summer's Evening brought many comments of 'probably the best yet'. But that was said last year too, so it is clear that the performers Daphne Hilliar brought together in church on 12th June, and the programme she devised, reflected a very high standard indeed. Our grateful thanks to all concerned, and not least to those who provided the refreshments afterwards. We look forward to 2010 – see you there.

Open Garden at The Limes was under NGS auspices this year, so we especially want to thank Stan & Gil Gordon for the generous donation of £400 which they made to Church funds following this event on 4th & 6th June, and also to acknowledge the dedicated work of our refreshment team on the Sunday afternoon.

Bradwell Pilgrimage on 3rd July was voted a great experience by those who attended and we can expect more to be asking to go next year. This is an all-age event.

Our 125th anniversary was celebrated on Sunday 22nd August with a special service in the morning and children's events in the afternoon.

Ride & Stride on 11th September is an annual sponsored cycling or walking event round as many Essex churches and chapels as one can manage in the time available, organised by "Friends of Essex Churches Trust". Monies raised are shared 50:50 with your

own church and the Trust, who use their income to provide grants when the big repair bills come in – as they tend to do! Full details and sponsor forms are available in Church or you can contact our local organiser Daphne Hilliar on 01245 264444.

Edward Bear Club commences on Monday 13th September at 2.15 pm in Church for the 0's to 5's – see Rev'd Pam's article.

Harvest Thanksgiving is on 3rd October, and will be celebrated at our All Age Service at 10.00 am. Harvest gifts should be in the form of specific food items for "Harvest for the Hungry" food parcels being organized by our school. Details will be available in church and school in September.

St Luke's Day on 17th October, as last year, will be marked by a special service at 11.00am which includes prayer for healing.

Remembrance Sunday is on 14th November and all are invited to our service which starts around 10.45am at the War Memorial outside the church for the Act of Remembrance, and then moves into church. As we continue to hear almost daily of those who are still sacrificing their lives on our behalf, it is not too much to ask that we should freely give just a few minutes of our time to remember the fallen and the bereaved, and also those who continue to suffer from their injuries. We hope many of you will be able to join us.

Look out for a new church Notice Board which should be appearing soon. Hopefully you won't be able to miss it when passing by the church.

Arrangements for connection to the main sewer (with the eventual aim of installing toilet facilities) mentioned in the last issue, are progressing and we hope this autumn will see that vital first step completed. But we still haven't located the mains water stopcock.

Ron Attenborough Tel:400361 e-mail: ronald304@btinternet.com

Sandra Robinson Tel: 400819 e-mail:

sandra.robinson@btinternet.com

www.easthanningfieldchurch.org

(now with direct link to Parish Council website)

VILLAGE DIARY

www.essexinfo.net/easthanningfieldparishcouncil/village-diary-2010/

The website is regularly updated so go on-line for the latest information.

SEPTEMBER

- Thursday 2nd Green box, paper, cardboard and plastic recycling collection
- Sunday 5th 8.30am **HOLY COMMUNION** (PB) 14th Sunday after Trinity at [All Saints' Church](http://AllSaintsChurch.org) www.easthanningfieldchurch.org
10am **ALL AGE SERVICE** with refreshments to follow at All Saints' Church
- Thursday 9th 2.50-3.40pm **MOBILE LIBRARY** at the Village Hall car park.
3.45-4.10pm **MOBILE LIBRARY** at Ashley Green.
- Saturday 11th 1.30pm [VILLAGE FETE](#) at Hanna's Field
- Monday 13th 2.15pm **EDWARD BEAR CLUB** for children aged 0-5 years at All Saints' Church.
- Wednesday 15th Green box, paper and plastic recycling collection
2pm **WI MEETING** at the WI Hall
- Sunday 19th 6pm **PRAISE & WORSHIP EVENING** at Bethel Church
- Thursday 23rd 2.50-3.40pm **MOBILE LIBRARY** at the Village Hall car park.
3.45-4.10pm **MOBILE LIBRARY** at Ashley Green.
8pm **PARISH COUNCIL MEETING** in the first floor meeting room at the Village Hall. Please use the side entrance
- Saturday 25th 11am-1pm **CAFE BAR** at Bethel Church
- Wednesday 29th Green box, paper, cardboard and plastic recycling collection

OCTOBER

- Sunday 3rd 10am **HARVEST THANKSGIVING & FAMILY SERVICE** at All Saints' Church.
10.45am **HARVEST FAMILY SERVICE** at Bethel Church.
- Thursday 7th 2.50-3.40pm **MOBILE LIBRARY** at the Village Hall car park.
3.45-4.10pm **MOBILE LIBRARY** at Ashley Green.
- Monday 11th 2.15pm **EDWARD BEAR CLUB** for children aged 0-5 years at All Saints' Church.
- Sunday 3rd 10am **HARVEST THANKSGIVING & FAMILY SERVICE** at All Saints' Church.

OCTOBER

CONTINUED

- Sunday 3rd 10.45am **HARVEST FAMILY SERVICE** at Bethel Church.
- Thursday 7th 2.50-3.40pm **MOBILE LIBRARY** at the Village Hall car park.
3.45-4.10pm **MOBILE LIBRARY** at Ashley Green.
- Monday 11th 2.15pm **EDWARD BEAR CLUB** for children aged 0-5 years at All Saints' Church.
- Wed. 13th Green box, paper and plastic recycling collection
- Sunday 17th 11am **ST LUKE'S DAY** prayers for healing at All Saints' Church
- Wed. 20th 2pm **WI MEETING** at the WI Hall
- Thursday 21st 2.50-3.40pm **MOBILE LIBRARY** at the Village Hall car park.
3.45-4.10pm **MOBILE LIBRARY** at Ashley Green.
- Saturday 23 11am-1pm **CAFE BAR** at Bethel Church.
- Wed. 27th Green box, paper, cardboard and plastic recycling collection
- Thursday 28th 8pm **PARISH COUNCIL MEETING** in the first floor meeting room at the Village Hall. Please use the side entrance

NOVEMBER

- Thursday 4th 2.50-3.40pm **MOBILE LIBRARY** at the Village Hall car park.
3.45-4.10pm **MOBILE LIBRARY** at Ashley Green.
- Monday 8th 2.15pm **EDWARD BEAR CLUB** for children aged 0-5 years at All Saints' Church.
- Wed. 10th Green box, paper and plastic recycling collection
- Sunday 14th 10.45am **REMEMBRANCE SUNDAY SERVICE** at the War Memorial in front of All Saints' Church
- Wed. 17th 2pm **WI MEETING** at the WI Hall
- Thursday 18th 2.50-3.40pm **MOBILE LIBRARY** at the Village Hall car park.
3.45-4.10pm **MOBILE LIBRARY** at Ashley Green.
- Wed. 24th Green box, paper, cardboard and plastic recycling collection
- Thursday 25th 8pm **PARISH COUNCIL BUDGET MEETING** in the first floor meeting room at the Village Hall. Please use the side entrance