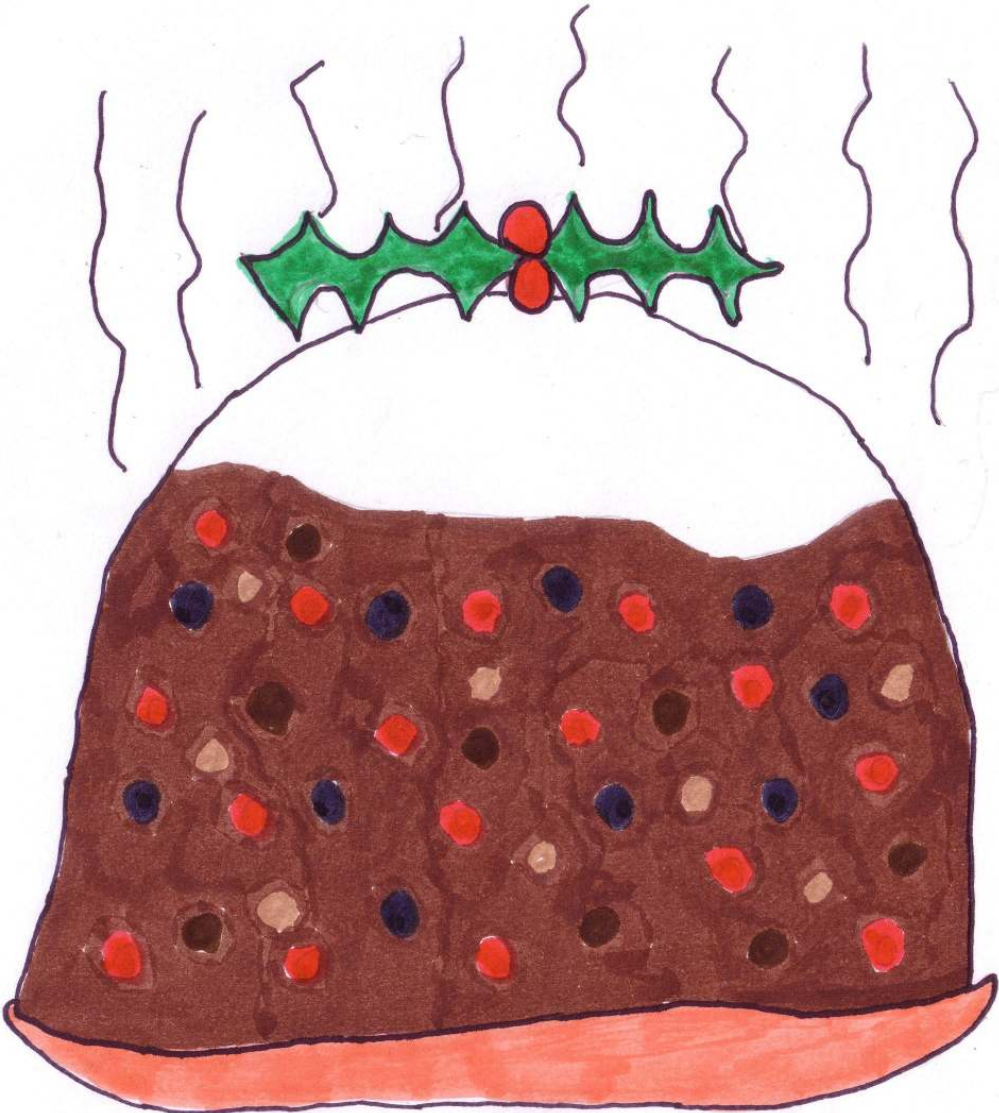


***EAST
HANNINGFIELD
NEWS***

*Winter 2009
No. 130*



FROM THE ACTING EDITOR

East Hanningfield News is published by East Hanningfield Parish Council and delivered by volunteers free to all homes in the parish. Inclusion of articles or advertisements does not signify endorsement by the Parish Council.

**Copy date for the next edition is
Saturday 13th. February 2010.**

Please continue to send articles and advertisements to me at karen.plumridge@btinternet.com or 2 Clinton Close.

Karen Plumridge, Acting Editor 400628

FRONT COVER

Well done to Anna Lewis whose picture of a steaming Christmas Pudding has won this years Christmas Cover Competition.



Congratulations too, to the runners-up whose pictures are on the back cover. There were 44 entries to the Competition this year and the quality of the pictures was really impressive, making judging a difficult task.

A few of the non-winning entries are dotted around the pages of the magazine. Unfortunately there isn't room for all of them. Thank you to everyone who submitted entries: you all did very well. And, thank you to East Hanningfield Primary School for participating again.

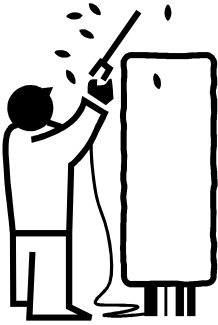
PARISH COUNCIL

If you would like to get involved with the Parish Paths Team please contact Peter Applegate on 400773. The Team is going to be erecting fingerposts, strimming weeds, repairing bridges and generally improving our parish footpath network as a leisure resource and as a means for pedestrians to get from A to B.

The Borough Council is currently consulting on five of its Local Development Framework (planning policy) documents. The document of the most direct interest to residents of East Hanningfield is called **Site Allocations**. It covers such topics as the industrial area, the protected lane, a site for affordable housing and the defined settlement boundary (village envelope). There are no specific sites allocated for gypsy/travellers but there is a “call for sites”, which is a request for proposals for sites. The five documents will be available to view at an exhibition in the Village Hall on Monday 7th. December from 2.30-4pm. Borough Council planning officers will be present to answer questions. You can also find the documents on the Borough Council’s website www.chelmsford.gov.uk by clicking on *Local Development Framework*.

The Parish Council, working with Martyn Gard, has been consulting the residents who use the access to the Gard site with a view to improving safety for pedestrians using the Tye footpath. If you are walking from the direction of the Church you cannot see vehicles coming from Gards and their drivers can’t see you until you are crossing the access. PC and Martyn Gard hope to improve visibility and slow down vehicles leaving the site. In the meantime, please be aware of the danger. When delivering the letters to the residents, I was crossing the access when a Parcel Force van appeared coming towards me at great speed and it was only my fleet of foot that saved me, as the driver had no chance of breaking in that short distance to miss me. I don’t think he even tried!

An issue that was identified several times in the written notes in the



Parish Plan questionnaire was the problem of trees and hedges overgrowing pavements. And as this is the season for hedging (and ditching) this is an opportunity for me to remind everyone whose property has a path alongside to walk along it to check whether a stray bramble scratches passersby, or people pushing buggies will have to step in the road to avoid the over or under growth.

Also, I've received a request to ask that you check the paths to the side or front of your property for leaves. Most of them will have fallen by now and they are starting to rot down into a slippery mess. A few minutes sweeping could prevent a nasty accident.



Another request is to ask drivers not to drive across or park on the grass verges. There are residents who look after the verges beside their properties and it is very disappointing for them to find tyre tracks and muddy bare patches due to inconsiderate and illegal parking. Some parking on bends is blocking sight lines and creating dangerous road conditions.

Please note that the December Meeting will be begin earlier than usual, at 7.30pm, because we have a guest speaker. Anne Culverwell is an officer at Chelmsford Borough Council and will be advising us on Statutory Nuisance and what we can do about it. This covers noisy neighbours, flies etc. The Meeting will be on 10th. December , which is earlier in the month than usual in order to avoid the holiday. Meeting dates will revert to the fourth Thursday in the month and a start time of 8pm in January.

The Meeting on 25th. February will be attended by Lord Hanningfield our County Councillor, and so will also begin at the earlier time of 7.30pm.

Parish Council Meetings are open to the public, and Public Question Time is a time set aside early on at each Meeting for residents to ask questions and raise issues of concern. Agenda for the Meetings are posted on the noticeboards and the website three clear days before each Meeting, and you will also find the meeting schedule for the year in those places.

Karen Plumridge,
Clerk to the Council 400628
karen.plumridge@btinternet.com
www.essexinfo.net/
easthanningfieldparishcouncil



*Santa Stuck in the Chimney by
Charlie Harris*

PROFESSIONAL PAINTER AND DECORATOR

John Lee

– Established for 30 years –

**FREE QUOTATIONS
REFERENCES AVAILABLE
INTERIORS: ALL TYPES OF WALL PAPERING AND PAINTING
EXTERIORS
GENERAL MAINTENANCE**



**TEL: 01245 350401
MOB: 07929 277728**

EMERGENCY PLANNING – what does it mean?

In recent years there has been a number of incidents throughout the country including severe flooding, major fire and severe weather conditions which meant that local authorities had to provide shelter, food and sometimes accommodation for members of the communities affected. Help has been relatively easy to provide because the local authorities had emergency plans in place. Chelmsford Borough Council is leading the way in preparing for dealing with emergencies and continues to develop strategies that will help communities in the event of a crisis.

The introduction of the Civil Contingencies Act 2004 has meant some fundamental changes in the way that Local Authorities deal with Emergency Planning issues. The Act has moved the emphasis of civil protection from being one of just planning and responding to emergencies towards resilience planning arrangements (which also includes response arrangements) and in doing so has placed new emergency planning duties on Local Authorities.

To ensure the most efficient deployment of resources, there is a working arrangement with Maldon District Council to provide a Joint Emergency Planning Unit. As part of our strategy we have produced guides to Business Continuity Planning and Developing a Community Safety Plan and advice leaflets all of which can be viewed on our website www.chelmsfordemergency.info

Effective planning relies heavily on volunteers from the Council's staff and the community to man pre-designated Rest Centres within each community. We intend to continue to harness the enthusiasm and local knowledge of volunteers within Parishes by developing a Community Safety Plan to help each community help themselves.

We are encouraging Parish Councils to take the lead in this in line with Chelmsford Borough Council's strategy to continue to provide advice, guidance and training.

Emergency Planning Unit, Chelmsford Borough Council

BOROUGH COUNCILLOR'S MESSAGE

I was very pleased to be part of the team that introduced the Village Agents scheme to this part of Essex representing the Local Strategic Partnership on which I represent the Borough Council. In that role I have become aware of the number of different organisations available to give support to vulnerable people. I have become aware too that whilst it may be convenient of administrators to place people into different groups in order to deal with their needs and give support, in the real world people's priorities change and thus they neither fit nor stay in a particular group.

Against this back drop at a time of family or personal crisis where can we turn? The answer is to the village agent who is trained to link need with available services what a simple and obvious idea and so appropriate to be launched at Christmas time when for Christians our focus should be on neighbourliness and good will.

As some of you may know following an accident I have been immobile for sometime, I hope to have regained ability to get around by the new year but in the mean time I would like to thank the many people who have been kind enough to wish me well and to sympathise with Julia and the family who have to live with me while I am so frustrated. At least it gives me a real insight into what those who need a Village Agent really feel!



I am privileged to represent you and I wish peace and happiness to you all now and in the coming year.

Mike Harris

Member for Bicknacre East and West Hanningfield Chelmsford Borough Council.

01245 400142

michael.harris@chelmsford.gov.uk

Intercounty

Intercounty would like to wish all our clients who have successfully sold through us during this year a very **HAPPY CHRISTMAS** and welcome new clients in the future. So, if you're positive about buying, selling or renting in the **New Year** and seriously want to get moving, give me a call on

01245200024/07984192938

www.intercounty.co.uk/carolphillips

6 Duke Street, Chelmsford, Essex, CM1 1HL



Carol Phillips

Your local Property Professional
Covering Chelmsford and the villages

Great Baddow

- ✓ FULL ASKING PRICE ACHIEVED
- ✓ SIMILAR URGENTLY REQUIRED



Great Baddow £280,000

Former show house set on the best position on this small development. Three fitted double bedrooms (master en-suite) lounge, dining room with views over green, fitted kitchen, utility room, garden, garage & parking.



Chelmsford £569,950

Detached with five beds (2 en-suite) with further guest accommodation and downstairs wc, large fitted kitchen/diner, impressive 40ft Lounge/Dining room reception with wonderful views over the mature garden.



Great Baddow £445,000

Three storey modern town house with generous living space. FIVE BEDROOMS (3 EN-SUITE), fitted kitchen, through lounge, dining room, flexible ground floor use for home office/salon/playroom, garages and garden.

LET BY

SIMILAR PROPERTIES REQUIRED FOR SALE OR LET



Howe Green £1350 pcm

Well respected road within 5 mins town Centre, four bedrooms, 2 receptions, established private garden. Similar urgently required to buy or let.



Properties always required in:
East Hanningfield • Sandon • Howe
Green and Bicknacre



Buying, Selling or Letting?
Call Carol Phillips your local Property Professional

01245200024

EASY ACCESS TO SERVICES & INFORMATION

Village Agents are now active in the Chelmsford area, working directly with the local community to identify current and future needs and provide a personal guide to a whole range of services and organisations that can offer help, advice and support. The good news is that this new and exciting pilot project will be operating in your area until March 2011, primarily supporting older people in isolated, rural areas to improve their access to health and wellbeing services and enable them to live a better quality of life.

The parishes of **East Hanningfield and Retendon** make up one of the 3 chosen areas in Chelmsford that will be served by the new friendly agents from the 15 October 2009. Your Village Agent is **John Peart** and he will be working hard to make contact with local people and begin to build trusted relationships in our community.



Employed by the Rural Community Council of Essex, the locally recruited Village Agents have an abundance of information at their fingertips and are in constant contact with local organisations and service providers to enable them to provide the most up-to-date free advice to their customers. They also work alongside County, Borough/District and Parish Councillors, as well as Parish Clerks and other key people in the community, to ensure that they can point people in the right direction for help and support.

Your Village Agent is working part-time in our parish, meeting residents face to face in their home or at local community facilities.

Brian Goodwin, the Village Agents' Manager, says "The Village Agents are providing a really important service, working in the heart of communities to connect isolated, older people to key services that they may not have otherwise known about, as well as providing

“Over the next few months we hope to achieve a lasting change in communities, as we arrange activity like practical checks to ensure home safety, pension advice and benefit checks and organise local events to bring people together. As you live in one of the pilot areas then you can expect to meet your Village Agent over the next few months. They will explain how they can help you and anyone in your local community make positive changes for the better.”

For more general information about the project or to arrange a meeting with a Village Agent please call us free on 0800 9775858 or e-mail enquiries@vaessex.org.uk.



Snowman by Amber Rowe

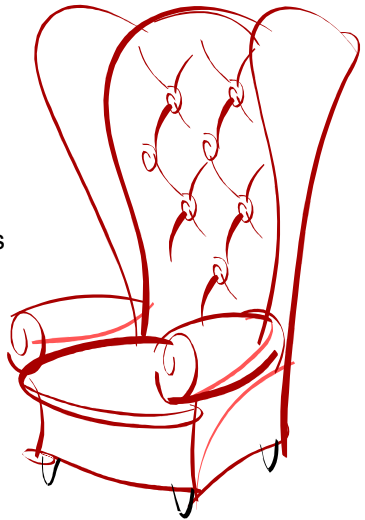
Simon Houlding Upholstery

Est. 1997

Specialist in Restoration of Antique Furniture
Modern Suites & Loose Covers
High Quality Bespoke Furniture Made to Order
Repairs & Advice
French Polishing
Wide Selection of the Latest Fabrics & Trimmings

Unit F, Stock Chase,
Heybridge,
Maldon CM9 4AA
Tel. 01621 859484
Mob. 07990 972676

www.houldingupholstery.co.uk



HANNA'S FIELD CHARITY



This year's village fete was once again very fortunate with the weather. Thank you to the many villagers who came to the Village Hall and sports field on the 12th of September to enjoy the entertainment provided by the Dark Horse Border Morris from Maldon, Ali Barmy and several of our regular hall users. The fete provided a wonderful event for the entire village to enjoy.

The success of the event was only possible thanks to the hard work of the members of the fete committee supported by their families and friends. The fete was also well supported by our local village businesses to whom we are very grateful.

Several weeks after the fete, the committee and their partners and many of those who had helped on the day met together for lunch at the Hoy Zen to celebrate the fete's success.

The Hanna's Field Charity is always looking for new trustees to assist in the running of the Village Hall and sports facilities. If you would like to find out more about the Charity please contact me or any member of the committee or go on the web site (just "google" Hanna's Field Charity and it should take you to us on the Parish Council web site). The AGM of the Charity will take place in April 2010 when a new committee will be elected. Villagers are particularly welcome to both come to the AGM and also to stand for election to the committee as a trustee of the Charity.

With a recession on us, the Charity trustees decided not to increase the Hall, meeting room, sports field and sports court hiring rates in 2009 however we will regrettably have to do this for 2010. We are reviewing these at the moment and new rates will apply from January of next year.

With the help of our 2009 fundraising, the Charity is looking at match funded grants from a number of sources for hall and field improvements in 2010. The main priority is a new sports floor in the main hall but we are also hoping to extend the sports wall on the field and add safety surfaces to the slide and T-swing in the play area as well as add a park bench. As part of the match funding investigations we are talking to the Parish Council about assistance with these projects. The hall, field and sports courts/tennis court are available for bookings which can be made via **Dawn Mills on 01245 400906**.



Please make use of the facilities which are available at a discounted rate to villagers.

Colin Warren
Chairman
01245 401050
cwarren132@aol.com



*Angel on
a Snow
Cloud by
Neve
Warren*



*Smiling
Reindeer
by
Elliot White*

EAST HANNINGFIELD PRIMARY SCHOOL

Everyone in the school would like to wish you a joyous Christmas and to put you in the Christmas mood...



The senior members of the village are invited to the dress rehearsal for "The Hoity Toity Angel" that is being performed by our youngest children on Tuesday, 8th December at 10:15am.

Buy your tree in the village. Nordman, low needle drop, Christmas Trees (3 foot to 7 foot tall) will be on sale in the school car park on 10am-3pm Saturday 5th and Sunday 6th December, 10am-1pm. All profits are going to the school PTA funds. Please come along to pick your best tree ever!

Our Carol Service this year is on Friday, 18th December at 9:30 am in All Saints Church. This year it is led by our older children.

Linda Findlay,
Head Teacher

EAST HANNINGFIELD PRIMARY
SCHOOL
Invites pre-school children and their
parents to visit our village school
(for entry September 2010 onwards)
Please call the School Office on
01245 400772

FROM REVEREND PAM

As Christmas approaches we begin once more to find ourselves engulfed in preparations, wrapping paper and decorations (not to mention the buying, the cooking and the cleaning!). In the midst of it all we search to find just the right present for each person we give to. We may be the kind of person who takes more pleasure in giving than in receiving and we may wait with anticipation to see if they like what we have chosen. Some presents are large and we have difficulty in wrapping them. Some presents have distinctive shapes and we find difficulty in disguising them. And then finally, after all the preparations, there comes that moment when the floor is covered with discarded Christmas paper and the exchange of gifts is over. And yet somewhere, waiting quietly, there is another present for each one of us. This present is not always easily found; it can be hidden by the glitter of the tinsel or overshadowed by the brightness of the lights. It is the kind of present that has to be desired in order to be found. But when it is found and received it is always right for the person who receives it.

All presents are symbols – they represent an offering of love and friendship from the giver. This special present which waits for us is no exception. If we can find the space and time in the business (or for some the loneliness) of Christmas to receive the gift of God's love we will have found our present. It may be found in the flicker of candle, in the picture on a Christmas card or in the words of a carol. It may be found in a prayer. It is expressed at Christmas-time in the form of a baby – God's son. This gift is not too big or awkward to store but it does need to be taken to heart. It will never break or wear out but it needs looking after as it is precious. God's love has been brought for us at a cost higher than any present we could ever buy. It is ours for the asking, it is ours for the receiving and it is ours to keep. Forever.

With love, Reverend Pam Pennell



FROM THE CHURCHWARDENS

Whilst we particularly look forward to seeing many of you at one or more of our Christmas services (see below), you can be sure of a warm welcome at any time at 'The Church on The Tye'. It was particularly encouraging to see a crowd of nearly 70 of all ages, gathered round the War Memorial for the Act of Remembrance on 8th November, and attending the Remembrance service in Church which followed. The offertory, amounting to £344-30, was this year dedicated to 'Help for Heroes', for the setting up of urgently needed Army Recovery Centres (ARCS) for the wounded, the first of which is now open.



Service details for the month of December are as follows:

- 6th 8.30 am Holy Communion (Book of Common Prayer)
10.00 am All Age Christingle Service, followed by refreshments
- 13th 11.00 am Holy Communion
- 20th 11.00 am Holy Communion, to which we welcome family & friends of Oliver & Lucy McKenzie for their Thanksgiving
3.30 pm Service of Nine Lessons & Carols, followed by Seasonal refreshments
- 24th 4.00 pm Carols, Crib & Tree Service, especially for families including grandparents!
11.30 pm Midnight Holy Communion
- 25th 10.00 am Christmas Day Holy Communion (with children much in mind) (*Note earlier time*)
- 27th 11.00 am Holy Communion, for which we welcome back Rev'd Ann Kosla

Enhanced hearing system for those with hearing aids and able to switch to 'T', at all services.

ROSEHILL HATCHERY



"New Life Every Day"

**Breeders &
suppliers of all types
of chickens**

**Bantams,
Ornamental Pheasants, Ducks,
Black Swans**

Whole range of poultry equipment

Bedding,

Made to measure Arks, Coops, Feeders,

Drinkers, Red Mite Powers, Sprays,

Chicken Feed, Duck Feed, Fish Food,

Keepwell VermX 100% natural tonic

Call "Ray"

01245 401005—07775 740 561

**ROSEHILL HATCHERY
CREEPHEDGE LANE
EAST HANNINGFIELD
CHELMSFORD
ESSEX CM3 8BP
acsltd2@btconnect.com**



Community Service Teams – We record our grateful thanks for all the hard work they have put in around the Church over this past year's growing season (and what a lot of growth there was!). They left the church grounds looking really good from every angle, and we have much appreciated the spirit in which they tackled this community task on each occasion.

Maintenance of Church Building – We are working our way through the Architect's 2007 list of works required to keep the building in good condition. Bakers of Danbury hope to be back in December, this time to focus on areas of the external walls and parapets which are in need of attention. We thank those of you who give financial support to All Saints' on a regular basis which has enabled us to proceed with this further work – and also the very many who will have contributed to our half share of the Village Fete proceeds, which plays a significant part in our annual finances – thank you too.

Web Site – We are working on setting up our own All Saints' site aimed at providing easy access for Google-type enquirers wanting just basic information about the village Church. This should have a built-in link to the Village Diary site for detailed information about current events. Don't forget you can find us at any time at www.essexinfo.net/easthanningfieldparishcouncil/village-diary-2009/ Simply click on '**All Saints**' for the latest information on what's happening and when. It is updated each month.

Stan Gordon – Tel: 400298 e.mail: sgordon@care4free.net

Ron Attenborough – Tel: 400361 e-mail: ronald304@btinternet.com



*Engine in
Snow by
Harry Ellis*

HANNINGFIELD MOTOR CO

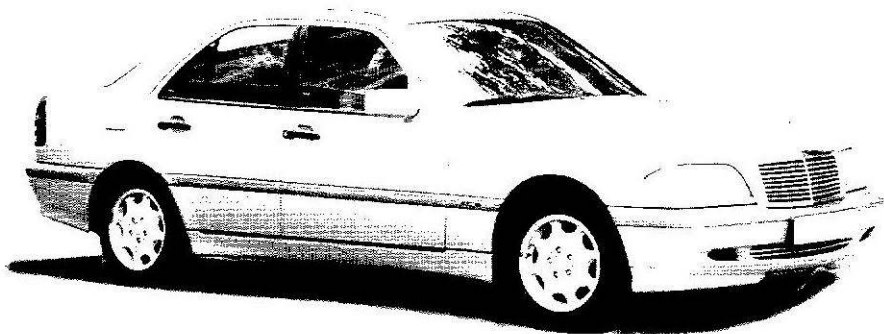


R.M.I.

MOT CENTRE

**SERVICING
DIAGNOSTICS
REPAIRS**

**MOT
£40**



TELEPHONE: 01245 400406

OPENING HOURS: MON-FRI 8.30AM TO 5.30PM

SATURDAY 9.00AM TO 1.00PM

Unit 23, East Hanningfield Industrial Estate, Old Church Road, East Hanningfield, Essex CM3 5BX

EAST HANNINGFIELD WOMEN'S INSTITUTE



Well, here we are with another year coming to a close. With the help of a lot of fund raising we continue to flourish. We do have fun. On Monday 7th. December our WI host our group carol concert in our Church at 7.30pm. You are most welcome to come along and join us for carols and readings and at the end mince pies and sausage rolls!!

Our December meeting will be on the 9th. in our hall. Mostly we meet on the third Wednesday of the month at 2pm, with slight variations in January, August and December.

If you would like to come along just give me a call. A warm welcome awaits you. From us all we wish you a Happy Christmas and a healthy 2010.

Lilian Crace 400288

“MILLERS” COFFEE MORNING

A successful coffee morning was held at “Millers” which raised £392 for the Farleigh Hospice and Macmillan Nurses as a small tribute to two dear members of our village sadly no longer with us.

Many thanks to all those who contributed.

Pam Kenton

*Angel by
Megan W.*



BETHEL NEWS



What another busy year.

As we close on another year, looking back it's been a difficult time for many of us. Yet through it all, God has been ever present. He has created us to live with a single passion: to joyfully display His glory in all spheres of life.

2009 has been another challenging and most eventful year and 2010 looks to heading in the same way. Next April we will be sending a group of 22 from Bethel, out to Kenya on a work project in a children's home north of Nairobi. Each individual will be funding themselves through sponsorship - and as a church we will be raising the necessary funds to pay for the materials that we need for the project. It is a real privilege to be able to support such an active and Christ-centred organisation as Kids Alive.

The project has really caught the imagination of all the folk at Bethel as many are now finding exciting ways to raise sponsorship for the trip and to finance the project. So far we have raised well-over £2000.

Already Jackie has been on a 5 kilometre run. We've had a Car Wash Day. We also had sponsored Hair Days where our trained hairdressers, Emma and Melanie, cut and quaffed hair all day - raising over £450. Some of the youngsters did a sponsored tree





hoist in Hylands Park. In November we also had a Quiz Night where over 60 people attended.

If you would like to know more about Kids Alive, please go to www.kidsaliveuk.org

Christmas. A time to celebrate

For many of us, Christmas is the time we get to see family and friends. Maybe it's one of the only times in the year we all get together. And it's great to relax in one another's company and enjoy some good food and drink, to catch up on the news and have a laugh.

Yet it's easy to lose sight of what Christmas is all about – the birth of Jesus. So why not come and join us at Bethel this year and put Christ at the heart of your celebrations? You'll find plenty to sing about.

You are warmly invited to our **Christmas Evening Carol Service on Sunday 20 December at 6.00pm** We will also be meeting together for 45 minutes on Christmas morning.

Can we take this opportunity to wish you a happy and healthy Christmas from all the folk at Bethel Evangelical Church.

Snowman by Sydney



PARISH PLAN

As we reported in the last magazine we have employed a professional organisation to analyse the answers to the questionnaire. In this edition you will find a graphical breakdown of the set questions. The results clearly demonstrate that there are some issues on which you all agree and others where opinion is divided. We are currently analysing the hand written comments and this work should be complete by New Year. Some of the data is already being put to good use examples being comments on pavements and the bus service. In the first instance Parish Council is looking to address three of the problem areas identified and with the latter comments obtained sent to the bus company.

We are preparing to write the final document and would like to have any old photographs of the parish, we will of course return these. In addition we have lost a number of the committee since we started and would welcome some new blood! In both instances contact me if you can help.

As the plan is not yet a formal document we have registered the committee with the Borough Council in relation to any planning issues. We have been notified that the new Local Development Framework Plan is out to consultation (closing date for comments 21/12/09). The main issues for the parish are protection of Back Lane, change in the village boundary to include the school and village hall and proposed 15 dwellings between Old Church Road and Back Lane. There will be copies of the plan in the Village Hall on the 7th December between 14:30 and 16:00.

Alternately you can access the plan on <http://consult.chelmsford.gov.uk> .

Finally I would like to wish you all season's greetings on behalf of the committee.

Stephen Snewin
Stephen.snewin@imperial.nhs.uk
07889126270

NEIGHBOURHOOD WATCH



Crime Update: Over the past year, houses on The Tye, The Common, Old Church Road, Highfields Mead, Bicknacre Road, and our Post Office received unwelcome visits, highlighting the need for care and vigilance. If you know something about these contact Chelmsford police or call Crime stoppers anonymously on 0800 555 111. Houses with expensive cars continue to be burgled for the car keys across the county. If your pride and joy is left on the drive overnight or when you are away, think about your house and key security.

Information Card: With this Newsletter you should find enclosed, a card NhW with Police & NhW contact details. Keep it handy for reference—maybe with those cards for the refuse collection days?

Website: The village NhW website has been updated - just “google” the words “east hanningfield neighbourhood watch” and it should find us on the Parish Council’s web site.

Winter Reminder: By making houses look occupied, homes are less likely to be targeted. Burglary, on the whole, is an opportunist crime so keep side gates locked, accessible windows closed, no tools/ladder or “hidden” spare key left out . If you are away, don’t leave milk or parcels on the doorstep, or newspapers/mail visible in porch. Always leave house lit after dark, draw the curtains, leave a radio playing. Install outdoor lights with movement/light sensors.

Neighbourhood Watch Marking Kit, Window Stickers & Advice Leaflets are all still available from NhW team.

E-mailed NhW Crime Alerts: Some people in the village already receive NhW local crime updates via email. To receive them just e-mail: geoff.dickman@benlineagencies.com and get on distribution. It’s a great way of exchanging crime information quickly & efficiently!

Next NhW Meeting 15 December 8pm – Village Hall Meeting

Room: We are looking for a few more street coordinators to join us so come along to the meeting for a mince pie, coffee and chat.

Geoff Dickman, Chairman NhW 403175 or 07968112179

Presenting A New Year's Eve
Big Band Dance

With The

JEFF SHORT

BIG BAND

16 PIECE BIG BAND & SINGERS!

At the

☆ **MARCONI CENTRE** ☆

(Beehive Lane, Chelmsford, Essex.)

THURSDAY 31st DECEMBER 2009

8.00pm – 12.30am

Including:

☆ *RAFFLE PRIZES LICENSED BAR* ☆

Bring Your Own Buffet

AMPLE FREE CAR PARKING AVAILABLE

The Marconi Centre

Tel: 01245 269 422

Tickets £25.00 - £27.00

Smart Dress Please

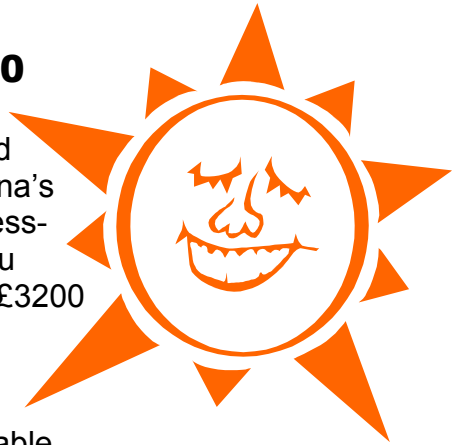
For all our other events please visit

www.jeffshort.co.uk or Tel: 01245 450 450



VILLAGE FETE 2009 & 2010

The sun shone on September 12th, and once again, many of you came to Hanna's Field, helping to make the fete a successful and enjoyable occasion. In case you didn't see the notice in the shop, over £3200 was raised for All Saints' Church and Hanna's Field Charity.



I would like to acknowledge the invaluable support of our principal sponsors- J Gard & Sons, David Chennells & Co, Carol Phillips at Intercounty, Paul Edwards of Chelmer Site Investigations, Regal Busways, and Mike Kirkham. Grateful thanks are also due to everyone else who contributed in any way – too many ways to mention here!

If you haven't been on the village website, do take a look, as the photos of the fete show some of the highlights of the afternoon. And if you weren't there, they might tempt you to consider coming next year!

There will be a fete in 2010 – if we can recruit more of you to help, especially on the day. If you have ideas to contribute, skills or practical support to offer, please come to a meeting on January 27th 2010 at 7.30pm in the Village Hall meeting room. The first part of the proceedings will be an open session for general discussion of ideas, after which we will form next year's committee and start planning in earnest. Just because you come along, doesn't mean you have to become a committee member – though we need fresh faces to take the fete forward.

Jackie Feehan and the fete committee
01245 400862 jackie@feehan.vispa.com

HANNA'S TOTS

We've had a lovely Autumn so far. It's been good to meet back up with those who were unable to come over the Summer break, and even better, we've had the chance to welcome some new arrivals and make some new friends. We have invested in new toys for our oldest children and are looking to update the equipment for our youngest ones.

My tea making still remains as dreadful as ever, but that doesn't stop friends whose children are school-age still dropping in for a chat and a cuppa! So come along and join us on a Friday morning at the Village Hall.



Fiona Ward 400944

CARPETS & VINYL

- ◆ FREE QUOTATIONS
- ◆ LOCAL MAN –
OVER 25 YEARS IN
THE BUSINESS



- ◆ VIEW SAMPLES IN
YOUR OWN HOME
- ◆ SUPPLY AND FITTING

CONTACT

NEIL POULSON

PHONE 01245 221316

MOBILE 07808 123676

Email: n.poulson@btinternet.com

EAST HANNINGFIELD PRE-SCHOOL

It has been a fun term learning about different festivals of light and making things to remind us of them. Also, we have enjoyed learning new games and skills with our specialist sports teacher.

A big thanks to everyone who supported our stalls at the Summer Fete: the resulting profits have allowed use to purchase some giant building blocks that we have loved playing with.

Finally, a big well done to our new children who have settled in so quickly. There are still some funded (3+) places available after Christmas, when our oldest children leave us, so please contact us if you are interested.

Fiona Ward 400944

Baddow Plumbing Services



**Replacement Boilers
&
Bathroom Suites**



**All Domestic Plumbing Work
Undertaken**

Free Estimates



01245 - 358355

Stephen Bryan



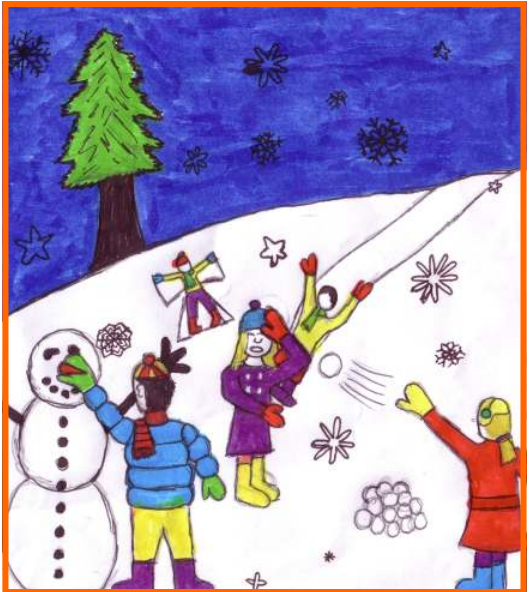
Class 1 Runner-up
Brooklyn



Class 2 Runner-up
Joshua Lambert



Class 3 Runner-up
Cathal Blackburn



Class 4 Runner-up
Emily Louise Smith