

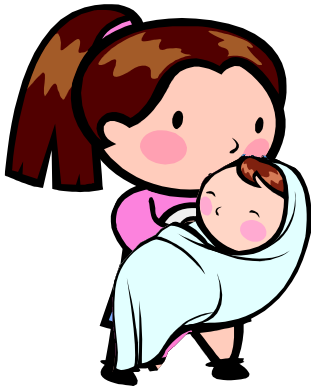
***EAST
HANNINGFIELD
NEWS***

*Autumn 2009
No. 129*



FROM THE ACTING EDITOR

Thank you to all the contributors who answered the call to submit their copy early, so that I could give my attention to the expected arrival of my first grandson over the weekend of 15th./16th. August.



I had thought that there was going to be a new Editor taking over for this edition: hence the bad timing of the copy-date, but increased work commitments meant that she had to withdraw her offer to become Editor. PC is therefore looking again for a new Editor.

East Hanningfield News is published by East Hanningfield Parish Council and delivered by volunteers free to all homes in the parish. Inclusion of articles or advertisements does not signify endorsement by the Parish Council.

Copy date for the next edition is Saturday 14th. November.

Earlier submission is welcome. Please continue to send articles and advertisements to me at karen.plumridge@btinternet.com or 2 Clinton Close.

Karen Plumridge, Acting Editor 400628

FRONT COVER

Mr. Punch along with Judy and the ghost will be returning to the Fete at Hanna's Field on 12th. September. They will be appearing at 2.15pm. See the centre pages for more Fete information.

PARISH COUNCIL

From the beginning of this year there has been a requirement for the Parish Council to publish many of its documents. This has been done by uploading them to the Council's website. These documents include minutes, agenda, policy documents, standing orders and audit documents. One of the more recent documents to be published was the Annual Report for 2008-9, which includes the Chairman's report and the receipts and payments account for the year. There are some paper copies left; please get in touch if you would like one.

Copies of the EH News from the last five years are also on the website plus the oldest editions from 1974 and 1975 for local history enthusiasts.

The inspection of all the public footpaths in the parish took longer than expected, but has now been completed. It has been decided that for this year efforts will be concentrated on the four walks in the published Parish Walks pack. If you would like to join the team working on the footpaths, please get in touch with Peter Applegate on 400773. Forthcoming projects will include erecting fingerposts, clearing undergrowth, installing way-markers and repairing stiles and bridges. As PC is a member of the County Parish Paths Partnership, the County Council funds the tools and materials for this work. If you encounter a problem on one of the public rights of way in the parish please let me know about it, and, if you can, please give the map co-ordinates to help identify the exact location of the problem.



If you are up very early on Fete Day, **Saturday, 12th. September**, you will be able to catch one of the visits of the "Saturday Standouts" for recyclable items, between **7.45am and 8.45am**, at the Village Hall car park.

The next visit after that will be on **24th. October** at the more se-date time of **11.15am-12.15pm**.

On a sunny Monday morning in mid-August you might have seen four people wandering around the village in hi-vis jackets and carrying clipboards. This was a site meeting between PC and County Highways officers to run through all the road and footway problems in the village. Simple matters like damaged or missing signs and potholes were put on the works list, but more serious issues will require further investigation. One of the matters discussed was the anomalous situation of the 40mph speed limit for part of Old Church Road. The County officers had experienced a near miss themselves in Old Church Road beside the numbered houses so were already aware of the speed problem. They are going to undertake a speed census and traffic count there shortly. The dangers for pedestrians walking along the Common and along the road southward from the Old Forge were also discussed.

Please note that although the September and October PC Meetings will be on the usual fourth Thursday of the month, the November Meeting will be on 19th, which is the third Thursday and the December Meeting on the 10th, which is the second Thursday. If you are unsure of dates of future Meetings you can check them on the website on the Agenda page or on the Meeting Schedule posted on the noticeboards.

PC Meetings are open to the public and shortly after the opening of each Meeting there is a Public Question Time when residents may speak on matters of local concern or ask questions. Now that the meeting room has new furniture, meetings there are quite a comfortable experience, so why not come along?

Karen Plumridge,
Clerk to the Council 400628

 www.essexinfo.net/easthanningfieldparishcouncil/

Your Parish Councillors are:

PETER APPLGATE	22 Bicknacre Road,
LES DRAPER	Highfields Farm Cottage, Highfields Mead
PAUL GARNER	Havenhurst, Back Lane
MIKE HARRIS	Windmill Cottage, Back Lane
JIM HOWE	Ditchleys, The Common
TONY LEES	Lea Cottage, The Common
PENNY WATERS	Silverlee, Bennetts Avenue

Your Borough Councillors are:

RICHARD POULTER	Windways, Plumtre Lane, Danbury CM3 4JL
MIKE HARRIS	Windmill Cottage, Back Lane

Your County Councillor is:

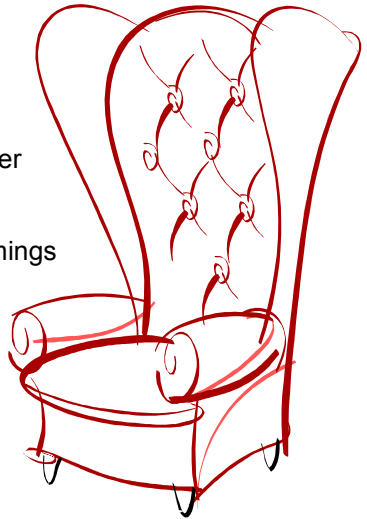
LORD HANNINGFIELD	Pippins Place, Helmons Lane, West Hanningfield
--------------------------	--

Simon Houlding Upholstery

Est. 1997

Specialist in Restoration of Antique Furniture
Modern Suites & Loose Covers
High Quality Bespoke Furniture Made to Order
Repairs & Advice
French Polishing
Wide Selection of the Latest Fabrics & Trimmings

Tel. 01621 859484
Mob. 07990 972676
www.houldingupholstery.co.uk
Unit F, Stock Chase,
Heybridge,
Maldon CM9 4AA



BOROUGH COUNCILLOR'S MESSAGE

I have not involved myself too closely with the Parish Plan as elected members should make way for new blood in this project and for new ideas especially from my grandchildren's generation, but I do thank the officers and members of the committee for keeping me informed. Thank you all for filling up your questionnaires and let us ensure that future development is in line with the general desire and not imposed or inflicted from 'above'.

The concept of a Parish Plan is that all residents especially the young, and the School is very much involved, should consider how the village should grow and coolly and from an informed base lay out a blue print. The alternative is to wait for a planning application and then to support or oppose it. When this happens the whole process becomes clouded by issues with which we are all too familiar. Firstly the applicant has no idea what the aspirations of the residents are. Secondly the personalities of the individuals who are stakeholders in the application seem to bear more relevance than the details of the plan itself! As I know from some experience. In addition to this someone moving into the village knows where the village is going and that the residents are involved, so do continue to take part please.



It is great to see so many community events coming and new ones being planned for the years to come with some new blood involved, that is exciting, the familiar faces are in many ways the backbone to the village but we need more community involvement from the young and it is happening.

Enjoy the summer! Best wishes to all

Mike Harris 01245400142

Member for Bicknacre East and West Hanningfield, Chelmsford BC
michael.harris@chelmsford.gov.uk

ALL SAINTS' CHURCH— FROM REVD PAM

As this November comes around I realise I have been priest in East Hanningfield for one year. This has been a year when I have learnt about the village, its community, its school and especially its church. I am getting to know the children and staff in the school through visits and also in the pre-school where I read a story to the children now and again. I have visited a number of people in their homes and enjoyed a cup of tea with them – and would be delighted to accept any more invitations. I have also been allowed the privilege of sharing both joys and sorrows with people.



In the church we are enjoying a growing choir (numerically rather than bodily!), learning new songs and now have a music group which plays at the, somewhat informal, All Age service each month. We have all benefited from the involvement in the services of the children who come with their enthusiasm, curiosity and eagerness to take part.

We have worked to make children welcome at all our services and have now renovated the Children's Corner at the back of the church and added a quantity of soft toys (which I am beginning to suspect appeal to the old as well as to the young...). We have made a bit more space in the church so we can enjoy chatting after the service and can welcome and get to know newcomers and visitors to our services.

As we now turn our thoughts to autumn we are planning our special

services for this time of the year – Harvest and Remembrance, for example. These are services where we look back and give thanks. And so it’s also an appropriate time to look back and give thanks to God for all we have been given over the past year. And then we can turn, with anticipation, to look forward to all that God will do in the year to come.



With our prayers for you,

Reverend Pam Pennell

AND FROM THE CHURCH WARDENS

All are welcome to our Sunday services which follow the monthly pattern shown below -

DATE	TIME	SERVICE
1 st Sunday	8.30 am	Holy Communion (BCP)
	10. am	All Age Service (CW) – followed by refreshments
2 nd Sunday	11 am	Holy Communion (CW)
		Holy Communion (CW) – followed by refreshments
3 rd Sunday	11 am	Holy Communion (CW)
4 th Sunday	11 am	Holy Communion (CW)
5 th Sunday	11 am	Variable. Likely to be ‘something different’

Enhanced hearing system for those with hearing aids and able to switch to ‘T,’ at all services and events in the Church

Would you like to receive our free monthly leaflet through your letter box with full details of the month’s activities and church news? Telephone or e-mail Ron Attenborough as shown below, and we’ll include you in our monthly delivery round.

In the last issue we invited you to our annual “**Music for a Summer’s Evening**”, in Church on 20th June. Thank you for coming – all 100 of you including those taking part. Some say it was the best yet – and so it probably was, with flutes, guitars, oboe, recorders, organ and piano played by a wide age range, along with catchy songs from members of our school choir and a young group from Boreham Church backed up by percussion, and not forgetting our enhanced church choir’s finale of “Two by two...”
The free refreshments seemed to go down well after all that. See you there next year?

Our thanks go to those who attended the “**Open Garden at The Limes**” on Friday 3rd July. Despite counter attractions of Andy Murray’s titanic semi-final and the School Fete, we were delighted that over £600 was raised for Church funds.

Harvest Thanksgiving is on Sunday 4th October at 10.00 am when we shall be supporting our school’s project for “Harvest for the Hungry”.

St Luke’s Day service is on Sunday 18th October at 11.00 am with the theme of healing.

Remembrance Day service is on Sunday 8th November, starting at 10.50 am with an Act of Remembrance around the War Memorial in front of the Church.

Don’t forget you can find us at any time at -

www.essexinfo.net/easthanningfieldparishcouncil/village-diary-2009/

- for the latest information on what’s happening and when, updated each month

Simply click on ‘All Saints’.

Stan Gordon – Tel: 400298 e.mail: sgordon@care4free.net
Ron Attenborough – Tel: 400361 e-mail:
ronald304@btinternet.com

Intercounty

Demand continues to be high for properties with easy access to town and we are always in need of similar good quality housing stock for sale or to let, so if you're positive about moving house and seriously want to get moving, give me a call

01245200024

Carol Phillips

www.intercounty.co.uk/carolphillips

Your local Property Professional
Covering Chelmsford and the villages



Howe Green £460,000

No Onward Chain

Quality detached 4 bedroom house in select Chalklands cul-de-sac, lounge/dining room, 5 piece en-suite to master bedroom plus three further bedrooms, study fitted kitchen breakfast room overlooking delightful established garden. Recommended.



Lady Lane, Moulsham £445,950

Extensive accommodation within this detached 5 bed house within walking distance to town, flexible living space or alternatively would suit professional person looking for substantial office/doctor's surgery (stpc). Well worth viewing.



Sandon £310,000

Must be viewed internally to appreciate the great open plan feel to this family sized 4 Bedroom much improved house now offering brand new bathroom, utility room and downstairs WC, drive parking for several cars. Try an offer!



Sandon £287,500

Overlooking glorious countryside is this extended 5 Bedroom 3 storey house with good sized bedrooms with further scope to create en-suite Master Bedroom double glazed gas CH, cul-de-sac location with easy access to amenities. Excellent family sized home!



All recently sale agreed/let by... More properties required!

07984192938



Buying Selling or Letting?
Call Carol Phillips your local Property Professional

01245200024

HANNA'S FIELD CHARITY

This year's art exhibition was once again organised by Wendy Thomas and Jenny Mouser ably assisted by a number of their friends and family and raised just short of £1,200. Thanks are due to everybody who supported the event including the artists who painted the pictures and the visitors who purchased them.

On the 9th July I attended the Annual General Meeting and Awards Ceremony of the Rural Community Council of Essex at Channels Golf Club. The Committee who run the village hall were awarded a Hallmark 1 Quality Standard Certificate by Nick Shuttleworth Executive Director of the RCCE.



This year's village fete is on Saturday 12th September. Please see the separate article and advert for more information on the fete which this year will see the return of all your favourite stalls and one or two new ones.

As ever volunteers are needed to help in the running of the Charity. If you are interested please contact me.

Colin Warren
Chairman
Hanna's Field Charity
01245 401050
cwarren132@aol.com

VILLAGE FETE 2009

If you enjoyed the village fete last year, please come and join us again on September 12th from 1.30 onwards – and bring your friends!

If you haven't bought any tickets for the draw, please do – apart from the £150 first prize, there are lots of other great prizes to be won!



If you would like to help in any way, it's not too late to volunteer. And if you could make some cakes, donate some books (look out for the special bin at the shop) or tombola prizes, please get in touch.

This year we welcome back some old favourites – Ali Barmy, Icenis dog training , as well as a beer tent, barbeque , pony rides, stalls and swing boats – and look forward to being en-

tertained by Dark Horse Border Morris Men. And there's an inflatable bungee run for those who want a challenge!

How can you consider being anywhere else but Hanna's Field on Saturday 12th September?

Jackie Feehan
Contact me on 400862

Jackie@feehan.vispa.com



GRAND DRAW 2009

Every year as part of the Fete, we organise a Grand Draw with lots of prizes. In fact the draw is the biggest single profit making element of the Fete fundraising effort so it's important to try to sell as many tickets as possible.



We recognise that whilst not every one will be able to come to the Fete, nevertheless you might want to support the event. You can do this by purchasing tickets in the Grand Draw, so this year we have decided to deliver two books of tickets to every household in the parish with this newsletter.

We are asking all residents to support the event, and to buy draw tickets. This year there are well over £500 worth of great prizes to be won on the day - all donated by local businesses and residents.

So please buy some tickets – they are 50p each or £2.50 for a book. Return the counterfoils and money (we would prefer a cheque made out to **Hanna's Field Charity** rather than cash please) to either Mike Plumridge (Treasurer, Hanna's Field Charity), 2 Clinton Close, East Hanningfield (CM3 8AZ) or if it is more convenient, to Ash at the Village Shop. Please do this by Thursday 10th September so we can make sure all the tickets are in and folded ready for Saturday.

If you have items for the white elephant stall please contact me.

Mike Plumridge 400628
Treasurer, Hanna's Field Charity



EAST HANNINGFIELD WI

I can hardly believe how fast the year is flying by, probably because there is always something going on. In June we had a successful Strawberry Tea for 62 ladies. We get great support from the other five groups we are linked with. Our August meeting on the 19th. was held in a member's garden. In September we will hold our very popular "Spud and Pud" evening. Most meetings are on the 3rd. Wednesday of the month at 2pm in our hall, but in January, August and December there is a slight change. So, if you are interested do give me a call.



Lilian Crace
400288

CARPETS & VINYL

- ♦ FREE QUOTATIONS
- ♦ LOCAL MAN –
OVER 25 YEARS IN
THE BUSINESS



- ♦ VIEW SAMPLES IN
YOUR OWN HOME
- ♦ SUPPLY AND FITTING

CONTACT

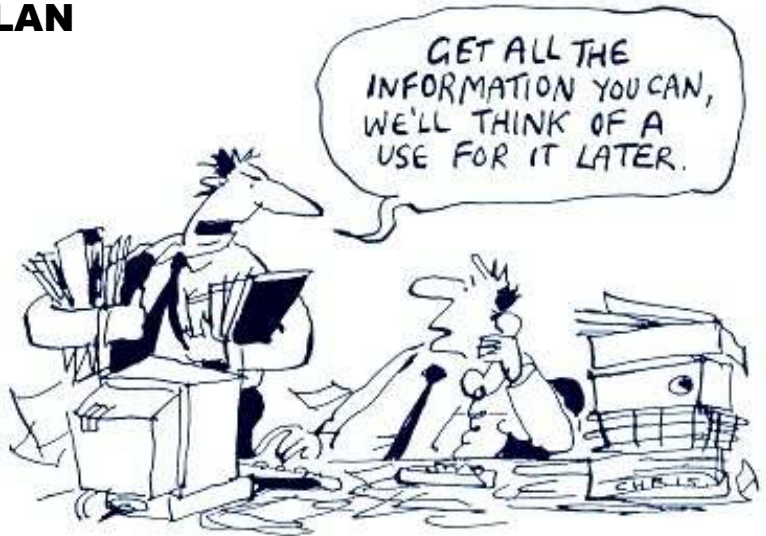
NEIL POULSON

PHONE 01245 221316

MOBILE 07808 123676

Email: n.poulson@btinternet.com

PARISH PLAN



We have now circulated the questionnaires by hand to all residential and work addresses in the Parish. We have all been amazed at the number of locations with no bells, knockers or post boxes! The committee are very grateful to the staff in the post office for helping to collect the completed forms. At the time of press we have had over 200 completed forms from the 700 circulated. According to evidence from the government a 20% return is the norm so we are doing very well!

The next step is to analyse the replies and to do this we are employing a professional organisation. This company will break the answers down by age, sex and location and present the results numerically and graphically. These can then be used in the report on the findings. The aim is that this will be completed over the holiday period. Our final task will then be to type up all the additional comments associated with the questions.

Many thanks to all who have completed questionnaires and we wish everyone a happy summer.

Stephen Snewin

Would you like to save money on all your household bills? Join the Club!

Save 5%
on all your petrol
and household
shopping!
ASK HOW!

- **Single bill for all your utilities**
- **Award-winning customer service**
- **Value that's unbeatable**
- **Easy to switch**

**Switch to the Utility Warehouse
Discount Club and make great savings
on all your household utilities -
with the added convenience of
having everything on the same
monthly bill!**

For full details, contact:

John 01245 400718

www.piggypro.co.uk



Home Phone



Mobile



Internet



Gas

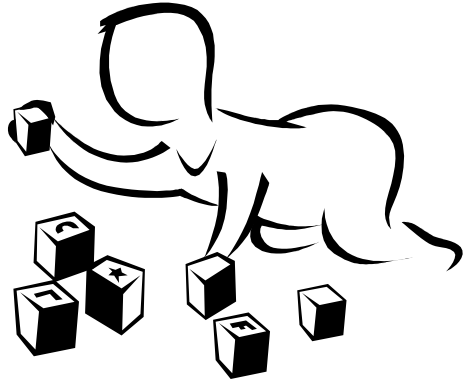


Electricity

**THE
UTILITY
WAREHOUSE**
Authorized
Distributor
DISCOUNT CLUB

HANNA'S TOTS

We have had a wonderful summer, carrying on meeting through the break and making the most of the chance to relax and have a chat and a cuppa while our children enjoy playing together. Also, we are looking forward to some new arrivals over the next few months!



We are always grateful to those who stay and help tidy away the chaos every week – a big thank you! And anyone who wants to pop in early is welcome to help set up! Look forward to see you all, soon.



PRESCHOOL

It's hard to believe that yet another year has passed and our oldest children are now embarking on exciting new journeys at 'Big School'. It's always sad to say goodbye to them, and we wish them all the best in the future.

We have a fun, new start this year, as we welcome back old faces and enjoy working and playing with new ones. There are still places available for this year, so please contact us if your child is over two.

Fiona Ward
400944



ROSEHILL HATCHERY



"New Life Every Day"

**Breeders &
suppliers of all types
of chickens**

**Bantams,
Ornamental Pheasants, Ducks,
Black Swans**

Whole range of poultry equipment

Bedding,

Made to measure Arks, Coops, Feeders,

Drinkers, Red Mite Powers, Sprays,

Chicken Feed, Duck Feed, Fish Food,

Keepwell VermX 100% natural tonic

Call "Ray"

01245 401005—07775 740 561

**ROSEHILL HATCHERY
CREEPHEDGE LANE
EAST HANNINGFIELD
CHELMSFORD
ESSEX CM3 8BP
acsltd2@btconnect.com**



EAST HANNINGFIELD C.E. PRIMARY SCHOOL

We wish our thirteen year 6 pupils leavers all the best for their future. They continue their education in six different secondary schools.



A big thank you for donating vouchers or book tokens and supporting our fund raising events! The supermarket vouchers and book tokens have been put to good use providing special extra equipment for class, library and play-ground .

Our PTA Summer Fete raised a record breaking £1,359.60. Money raised previously has funded the refurbishment of the slide equipment and the new safety surfaces. We are now hoping to complete the equipping of class 1's outside environment. Thank you for your part in enriching the children's school experiences.

The summer holiday gives children and staff a chance to catch up, relax and prepare for a new school year. It also allows for alterations to the school. You may notice more changes to the appearance of the school during the holiday when the single glazed windows and panels are replaced with new better insulated units.

In the term ahead our oldest class will be singing at the Royal Albert Hall on 16th November in aid of Barnardo's. Tickets are available from the Royal Albert Hall box office.

We look forward to welcoming back existing pupils and our new children on Monday, 7th September.

Linda Findlay Headteacher



HANNINGFIELD MOTOR CO

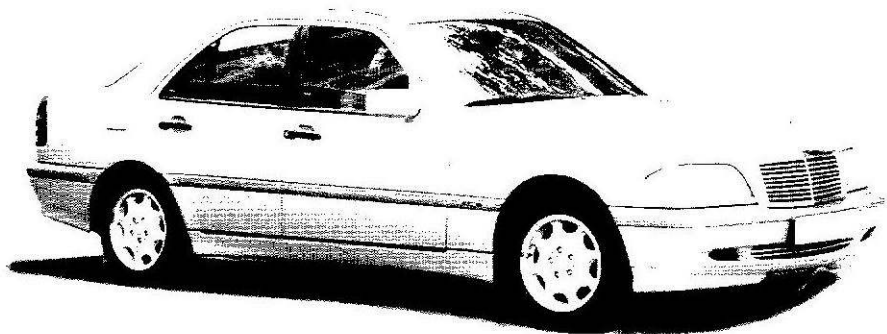


R.M.I.

MOT CENTRE

**SERVICING
DIAGNOSTICS
REPAIRS**

**MOT
£40**



TELEPHONE: 01245 400406

OPENING HOURS: MON-FRI 8.30AM TO 5.30PM

SATURDAY 9.00AM TO 1.00PM

Unit 23, East Hanningfield Industrial Estate, Old Church Road, East Hanningfield, Essex CM3 5BX

NEIGHBOURHOOD WATCH



Recognising what's bogus!

We've been made aware of a suspicious person who called a member of the public and claimed to be doing a bus survey. The caller was very polite and asked the following questions.

Please could you give me your age? they then asked which age bracket you would fall in (46 - 60) (61 - 75) (76 - 85) or over.-The lady said the one that was relevant to her.

They then asked the age of her partner or anyone else in the house.-She replied that no one else was in the house.

They then asked her what her income was and again this came in the same format as the age question.—The lady replied the amount she had.

They then asked if she lived alone.—She replied - Yes

Do you have any disabilities? - No

Do you use local buses? - Yes

What do you use buses for? - For shopping and to visit friends

How often do you use the buses? - Every week

Do you have a free bus pass or not? - Yes

When did you last use it and what time?- I used it Sunday as I usually go out to visit my friend every Sunday, I catch the 2pm bus and the get the 4.30 back home.

The lady was thanked for her time.

The lady then made a call to Neighbourhood Watch as she felt worried that she had given a total stranger too much information

No local bus companies are carrying out surveys over the phone.

As you can see from the above who ever made this call has now found out the following:

Her age - that she lives alone - her income - her disability - she is a bus user - the day she goes out and time she goes out.

Every year, millions of innocent people lose money to scams that come by post or phone such as fake lottery and prize draw wins, bogus psychic predictions and ‘miracle’ health cures. Avoid becoming a victim by following some simple tips.



Never reply straight away to an offer. Speak to a relative, friend, neighbour or carer before you do anything.



Never send money to anyone who says you’ve won the lottery or a big prize— you’ll never see your promised winnings.



Never give your bank account details or other personal information to people you don’t know.



Never ring a 090 number unless you’re certain how much the call will cost and know what you are likely to receive.



Never send money off in response to psychic mailings. Identical letters predicting good or bad luck are sent to thousands of people.

If you suspect a scam, before sending any money call **Consumer Direct** for clear, practical advice on **08454 04 05 06**.

Millenium crime—There were three, night time car key crimes on 24 July in neighbouring parishes. In all cases unknown suspects gained entry to a secure property by forcing a door. The cost of the damaged varied between £100 and £1,000. In all cases they stole various items and a set of car keys. They then used the car keys to steal and drive away in a silver Nissan Navara, a BMW Series 3, and a BMW 520D. The estimated total value of the stolen items varied between £11,000 and the low five figures. This type of crime, known as Millennium burglary, is an ongoing problem in the Town and surrounding area. Always keep your keys (car and house keys) somewhere safe and out of sight. Take your house and car keys upstairs when you go to bed.

Dc Guy Percy said: "In a significant number of night-time burglaries, criminals gain entry to the property through an insecure uPVC door. The all too common scenario is that members of the public retire to bed with a shut front door and the handle pulled up which engages the five or so extra locks along the sides and top and bottom of the door. However, unless the key is then used to lock the door, engaging these extra locks into place, then the door is NOT fully secure. Unfortunately, this simple act of not locking the door from inside can leave your property vulnerable to criminals."

Village Crime—Two houses were burgled on the Tye in August.

www.essexinfo.net/easthanningfield_parishcouncil/neighbourhood_watch

Neighbourhood Watch Contact: is Geoff Dickman 400450

Baddow Plumbing Services



Replacement Boilers
&
Bathroom Suites



All Domestic Plumbing Work
Undertaken

Free Estimates



01245 - 358355

Stephen Bryan



EAST HANNINGFIELD

VILLAGE

FETE

SATURDAY

12TH SEPTEMBER

1.30PM TO 5.00 PM