

***EAST
HANNINGFIELD
NEWS***

Spring 2009

No. 127

East Hanningfield School children about 100 years ago.



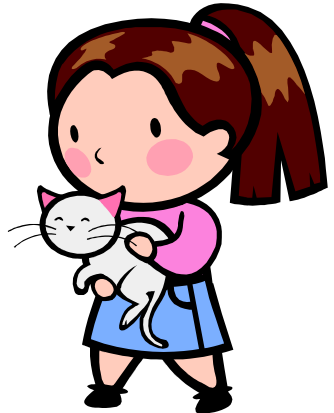
FROM THE ACTING EDITOR

Please continue to send articles and advertisements to me at karen.plumridge@btinternet.com or 2 Clinton Close.

Copy date for the next edition is Friday, 15th. May.

East Hanningfield News is published by East Hanningfield Parish Council and delivered, by volunteers, free to all homes in the parish. Inclusion of articles or advertisements does not signify endorsement by the Parish Council.

Karen Plumridge, Acting Editor 400628



FRONT COVER

This photograph is difficult to date but the teachers' dress and hair-styles would indicate about 1900-10, but teachers would probably have been discouraged from dressing fashionably, so perhaps it is later. The 1901 Census identifies two seventeen year old pupil teachers, Emily Baker who lived with her parents at the Horse Shoes Inn and Alice Downes who lived with her family at Willis Farm, so perhaps they are the two teachers on the left. The boy at the very back centre, might be the 15 year old pupil teacher Thomas John Woolford who lived at Great Claydons Lodge.

Identification of some of the children would help, so do you recognise anyone? Please contact the Acting Editor if you can put a name to a face.

PARISH COUNCIL

As mentioned in the previous News, Lord Hanningfield, our County Councillor, was expected to come to the December PC Meeting, but he was called to attend the House of Lords, so could not join us. He is now set to attend the PC Meeting on Thursday, 23rd. April.

If you go to the PC website, the photos on the home page show the parish paths team replacing the bridge between Hanna's Field and the Buttercup Field. If you would like to take part in a similar (but bigger) exercise the next local bridge building project will take place on 4th. and 5th. March. Please contact Peter Applegate for details on 400773. Team members have been attending training provided by the County Council on the safe use of brush cutters and first aid.

The Borough Council has allocated three dates for the "Saturday Standouts" at the Village Hall car park. These are for recyclable items such as furniture, fridge freezers, television & computer screens, white goods (microwaves & cookers etc) and the usual recyclables that are taken by the doorstep collection, except garden refuse. Please note times vary: **20th. June 7.45-8.45am, 12th. September, 7.45-8.45am and 24th. October, 11.15am-12.15pm.**



At the end of 2008, Steve Kibble resigned from PC due to work commitments and PC would like to thank him for his contribution during his term of office. When a vacancy occurs there is a legal requirement to advertise the vacancy for a specified period in case local voters want to call an election. This period has expired and at the time of writing notices are on display asking for volunteers to stand for co-option on to the Council. If no-one comes for-

ward in time for the February PC Meeting, the next opportunity to co-opt will be at the Meeting at the end of March, so if you are interested, please get in touch because there might still be a vacancy when this News is published.



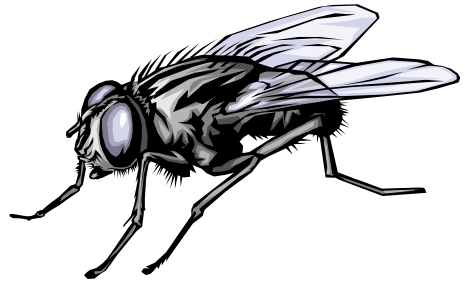
On the same morning, Saturday, 14th. March, as Hanna's Field Charity are holding a book sale in the first floor meeting room at the Village Hall, our local Police Community Support Officer will be security tagging bicycles in the entrance lobby from 11am to 1pm. Cycle thefts have taken place in the area in recent months, so it is well worth getting your bike tagged.

Another event taking place on the same morning at the Village Hall is a visit by an Essex Chronicle photographer to take a group photo of as many residents as can make an appearance at **11.30am**. This is for the regular Chronicle feature "Village of the Week". It seems there is a competition to see which village can organise the biggest crowd, so let's see if we can break the current record. Pets are invited, but I don't know whether they are included in the head count. The article is expected to be published in early April.



On a more serious note, a group of residents attended an autumn PC Meeting to encourage residents to complain to the Borough Council's Environmental Services department when the numbers of flies gets to be beyond what one would expect from living in the countryside. The Borough Council is empowered and obliged to take action under Section 101 of the Clean Neighbourhoods and Environment Act 2005 which amended Section 79 of the

Environment Protection Act 1990. This legislation established insects as a statutory nuisance and the Borough Council can issue an abatement notice under Section 80 of the 1990 Act. If you would like to read the Government guidance on



this subject it can be found at <http://www.defra.gov.uk/environment/localenv/legislation/cnea/statnuisance.pdf> . I have tried and failed to find anything about this on the Borough Council's website. Residents who have complained to the Borough Council before have found that you might speak to an officer who is unaware of the legislation and unaware that anyone else has complained, so it is just as well to be able to refer to the statute and it is also a good idea to confer with your neighbours to find out how many other people have reported the problem.

The PC website receives several "hits" a day. There is a lot more on there than just agenda and minutes. There are study resources that would be useful for school projects, and some of the earliest issues of the News have been uploaded so that you can read about what was happening here 35 years ago. The Village Diary contains a full year's listings of local events, so if you are organising something special please let me know, and the Diary also contains reminders of such regular happenings as mobile library visits and recycling collections. A relatively new page on the website is the Village Directory which is for information about local businesses. Please let me know if you would like your business added.



For the most part, PC Meetings continue on the fourth Thursday of the month at 8pm in the first floor meeting room at the Village Hall.

Notices of Meetings always go up on the noticeboards three clear days beforehand. If you have a matter that you would like the Council to consider please get it to me in writing by the Friday before the next Meeting so that it can be included in the Agenda. Residents are welcome to attend Meetings and are invited to speak during Public Question Time which takes place shortly after the Meeting opens.

Karen Plumridge,
Clerk to the Parish Council
400628
www.essexinfo.net/easthanningfieldparishcouncil

MID ESSEX FENCING & DECKING SERVICES

- **GATES**
- **FENCING**
- **DECKING**
- **PATIOS**
- **DRIVEWAYS**
- **LANDSCAPING**



FOR A FREE ESTIMATE CALL PHIL
07779 591248 OR 01245 320318

DATE FOR ART ENTHUSIASTS

Hanna's Field Charity will be holding their annual exhibition of works by local artists on **Saturday 11th. July.** This is a very popular event and profits go to Village Hall fund raising projects, so it is all in a good cause.

CALL FOR ARTISTS

If you are an artist wishing to exhibit please contact Wendy Thomas on
400797



Intercounty

An unprecedented record number of viewing figures for the early part of 2009 is giving a confidence boost to the current market and we require more properties within easy reach of A12/A130 corridor. So, if you're positive about moving house and you seriously want to get moving, give me a call on **01245 200024** – and together we can make it happen!

Carol Phillips

Your local Property Professional
Covering Chelmsford and the villages



**Orchard Drive,
Mayland
£259,950**

Extended four bed detached family house with spacious living space dining room, downstairs wc, garage and delightful garden with conservatory/Summerhouse and raised Koi pond. No onward chain.



**Heron Way,
Mayland
£205,000**

Family accommodation with scope to improve further is this three bed bungalow (en-suite to master). Fitted kitchen, lounge, conservatory, parking for 6-7 cars. Must be viewed. All offers considered.



NEW PRICE



**Tyrells Way,
Great Baddow
£345,000**

A great family home with separate dining room, sitting room, further double aspect lounge. This FOUR BED (master en-suite) extended home must be viewed to see the flexible living space on offer.



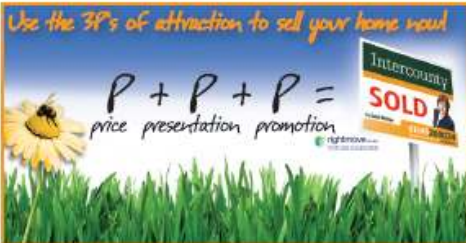
**Great Baddow
P.O.A.**

Call for details of this FIVE BEDROOM (all en-suite) detached house. Scope to provide annex living quarters, 3 receptions, kitchen/breakfast room, utility, double garage and good sized garden. Quiet location close to town.

Rental Lettings

Up to date list of rental properties available – over 700 managed in the region by Intercounty Lettings.

Great choice, service and maintenance available to both tenants and landlords – telephone for details.



www.intercounty.co.uk/carolphillips

07984192938

Buying, Selling or Letting?
Call Carol Phillips your local Property Professional

01245200024

BOROUGH COUNCILLOR'S MESSAGE



I attended a recent planning meeting to support residents who are really keen to see the van sales site on the A130 turned into a residential site. Whilst the planning committee could not pass the application despite my protestations they agreed in principle to the idea and have asked the owners to submit a 'softer' plan for the redevelopment.

At the same time the Secretary of State has 'called in' the approval for outline planning permission on Temple Farm. The latter is a much

bigger project than the former but in my view the concept is the same.

The challenge turns on the fact that many of the industrial hot spots in our community are there by accident, no planner ever chose to put them there, they reacted to events, another example is the Tile Works which when closed was in the opinion of the then District Council just the place for a scrap yard.

What is the way forward? In my view planners have to be brave. Every party in opposition claim that they want local people to drive local development, in power they are less comfortable with the policy!

Where these sites exist my view is that common sense should prevail. I am very 'green' I believe in the defence of the environment but I will not fight to save a green field site when in reality it is a scrap yard or to protect trees whose roots are submerged in decades of battery acid polluting waterways and wildlife. Equally I

appreciate that in a democracy the only way to create a well ordered environment in which we can all live comfortably is to provide a commercially viable alternative to what is already there but not acceptable.

You can be assured that I will always try to work to these objectives and am always pleased to hear imaginative ways to do so.

Best wishes to you all
Mike Harris 400142
Member for Bicknacre East and West Hanningfield—Chelmsford Borough Council
Michael.harris@chelmsford.gov.uk



MESSAGE FOR GARDEN LOVERS

For the first time Hanna’s Field Charity is planning to organise an Open Garden Day in the village in May or June as a fund raising event for the Village Hall. We are looking for people with beautiful gardens who would like to support this event. We want all sizes and shapes of garden and from all over the village. If you would like to take part please contact Wendy Thomas on 400797.



HANNA'S FIELD CHARITY

I am pleased to report that we were successful in our bid with the Community Initiatives Fund who approved a grant of £6,000 to enable us to convert the former changing room into a practical storage area and also install a new staircase to give safe access to the upstairs storage area beside the small hall. This work was scheduled to take place during the February half term so as to cause minimum disruption to our regular hall users.

The Charity AGM will take place on Wednesday 15th April 2009 when a new committee will be elected. Villagers are particularly welcome both to attend the meeting and to seek election as trustees.

More information about the charity can be found on our website which is part of the Parish Council website (see below).

The Hanna's Field Charity Committee is always looking for new members to join the committee and assist in the running of the Village Hall and sports facilities. If you would like to find out more about the Charity please contact me or any member of the committee.

The large hall, small hall, meeting room, sports field and sports courts/tennis court are available for bookings which can be made via Dawn Mills on 01245 400906. Please make use of the facilities which are available at a discounted rate to villagers.

Colin Warren
Chairman
01245 401050

cwarren132@aol.com

<http://www.essexinfo.net/easthanningfieldparishcouncil/village-hall/>



PARISH PLAN

In the *Ascent of Man* Jacob Bronoski said ‘Ask an impertinent question and you are on the way to a pertinent answer’. However what question to ask in the first place is the current conundrum for the Parish Plan committee. As has been outlined previously the initial work of the group has been canvassing the views of as many people as possible associated with the village. We have asked what is special, what the problems are and what can be improved within the village and parish. We are extremely grateful to all those who replied via the questionnaires at the various events. The table below lists in frequency order the most common answers.

Issues raised by frequency
Pinch points and roundabout – dangerous, ineffective and wrong place
Bus service – ‘erratic’
Value The Tye and open spaces
No more developments in village
Preserve the rural character of village
Preserve surrounding countryside (birds and animals)
Allotments needed
Speeding vehicles on roads
Preserve Village character
To many heavy lorries through village
Would like village sign on Tye
All Saints Church as a visible hub of the community
Preserve Post Office / Shop / Pub
Need a visiting Doctor Surgery maybe twice a week
No street lights after 24:00
Reduce the amount of street furniture

Some of the issues raised are not appropriate for the parish plan but clearly need addressing as they have been raised by so many

of you. The Parish Council is aware of these and I am sure will look at what can be achieved, remember we are independent from Parish Council but are happy to act as a conduit in these matters. What the committee has spent the last two meetings on is taking the relevant issues and using these to build the questionnaire for circulation to all in the Parish later this year. This work is now almost complete and we will run a small trial to ensure the questions work, produce data that we can use and is understandable. We are anxious to also include as many young people in the survey and are therefore writing a questionnaire specifically for them. We will also be working with the village school to consider the requirements of the youngest children.

So have we chosen the right question to ask to get a 'pertinent answer'? Watch this space!

Stephen Snewin
stephen.snewin@imperial.nhs.uk

CARPETS & VINYL

◆ FREE QUOTATIONS

◆ LOCAL MAN –
OVER 25 YEARS IN
THE BUSINESS



◆ VIEW SAMPLES IN
YOUR OWN HOME

◆ SUPPLY AND FITTING

CONTACT
NEIL POULSON

PHONE 01245 221316

MOBILE 07808 123676

email: n.poulson@btinternet.com

ALL SAINTS' CHURCH

A MESSAGE FROM REVEREND PAM

With all the snow we've been having it is surprising to find that the spring bulbs are still pushing up and can be seen on the occasions between snowfalls when the snow and ice melt. It is a helpful reminder that, below the surface of the snow where we cannot see, spring is preparing itself and waiting to happen.

And in the church we have also started to prepare for the spring festivals and services. In spite of the fact that we can see no flowers as yet, we are planning our Mothering Sunday service, where flowers are distributed. This service will be a celebration and thanksgiving for all who are cared for and for all who care for others. In this way we include everyone, as God includes all of us in his loving care.

We are also starting to think and plan for Easter. 'Lent' is the few weeks before Easter Sunday when we choose to share, in some way, the darkness which Christ lived in before he died. It's rather like going down a tunnel in order to reach the sunlight at the end when you come out. This helps us to have a deeper understanding of what Easter Sunday is about and to celebrate the joy of the resurrection. This year we are going to study parts of the Bible through Lent, in a group, to help us to understand how our faith affects our own lives, as well as having a Good Friday meditation in the church. Everyone is welcome to come to the group study and meditation as well as to all the services.

As a church we also welcome requests for prayer. If you would



like to offer any names or topics for prayer they will be included in the prayers in the next Sunday service. Please see the churchwardens' notices for times of services and instructions for submitting prayer requests.

I have very much enjoyed visiting many people in the village in their homes and having a chat over a cup of tea. I am still available for sharing a cup of tea so if you would like a visit, please don't hesitate to call – it would be lovely to meet you!

With love

Pam

Tel: 01277 841179

Email: pencof.pam@btinternet.com



NOTICES FROM THE CHURCHWARDENS

The scent of Spring is certainly in the air at The Church on the Tye, for there are a number of new things commencing 1st March which we want to tell you about - and by the time you read this, the snow-drops too, should be a very welcome sight as you walk along The Tye past the church.

NEW MONTHLY PATTERN AND TIMINGS FOR SUNDAY SERVICES

Starting Sunday 1st March, our services will all be commencing a bit **earlier** than at present, the one exception being for those who come to 8.00 am Holy Communion, who are being given an extra half hour in bed. They didn't ask for it but we believe they will like it! Here are the full details:-

1st Sunday – 8.30 am Holy Communion (Book of Common Prayer),

followed at 10.00 am by an All Age Service (Common Worship)
2nd, 3rd & 4th Sundays – 11.00 am Holy Communion (Common
Worship)

5th Sunday – 11.00 am Matins (Book of Common Prayer) or Special Service occasions as announced.

We hope this simplified pattern and changed timings will be easier to remember and help to make our services generally more accessible. This is how it looks for the month of March:-

1 March	8.30 am	Holy Communion(BCP) – 1 st Sunday of Lent
	10 am	All Age Service(CW) – followed by refreshments
8 March	11 am	Holy Communion(CW) – 2 nd Sunday of Lent
15 March	11 am	Holy Communion(CW) – 3 rd Sunday of Lent
22 March	11 am	Holy Communion(CW) – 4 th Sunday of Lent
29 March	11 am	Matins(BCP) – 5 th Sunday of Lent

The Rev'd Pam will be taking all these services except Matins on March 29, when our good friend Matthew Radford, a Reader from Danbury Parish Church, will lead our worship.

LENT COURSE (See Rev'd Pam's message above)

We are, for the first time, able to offer an opportunity in East Hanningfield for an informal Lent study group, meeting in homes, and to which anyone, church member or not, is welcome to come. It will run from 1st March for 5 sessions, meeting on Sundays at 5.00 pm, and lasting an hour or so (say to 6.30 pm at the latest). The first session will be held at 3, The Old Rectory in Abbey Fields. Please contact the Rev'd Pam if you would like to come so that she can reserve a course handbook for you, **or** if you want to find out a bit more about it before deciding (tel:01277 841179). *(And if you read this just too late for the first session, please still give Pam a call!).*

PRAYER REQUESTS (See Rev'd Pam's message above)

Initially there will be a simple list at the back of the church for names or topics to be added as you arrive for a service, and any such requests will be included in that day's Intercessions. Requests for the following week can be added after the service before you leave. Later on we plan to make individual Prayer Request cards available for wider community use. Watch out for details.

SPECIAL SERVICE OCCASIONS COMING UP

22 March	11 am	Mothering Sunday – A service not only for mothers but for all who are engaged in care, with Holy Communion
5 April	10 am	Palm Sunday – An All Age service, followed by refreshments
10 April	12Noon	Good Friday – A service for quiet reflection – until 1pm
12 April	11 am	Easter Day – A service for joyful celebration, with Holy Communion

ADVANCE NOTICE OF EVENTS

April 24 – 7.45 pm – Church Annual General Meeting in the Committee Room, Village Hall

July 3 – 6.00 pm – Open Garden at The Limes on The Tye

RETURNING TO THE SPRING THEME.....we would welcome anyone who would like to come and help with giving the church a spring clean in preparation for Easter on Saturday 4th April from 10.00 am. An hour of your time (**including** tea/coffee break!), and the help of your hands, would make a big difference.

AND FINALLY.....don't forget you can look us up on the village diary web site for more information which we update every month – www.essexinfo.net/easthanningfieldparishcouncil/village-diary-2009/ and click on All Saints

Stan Gordon – Tel: 01245 400298

Ron Attenborough – Tel: 01245 400361

EAST HANNINGFIELD C.E. PRIMARY SCHOOL

During last term we had our OFSTED and Diocesan inspections.

“A tremendous commitment to do what is best for all pupils” (OFSTED report September 2009)

“Outstanding at meeting the needs of all learners” (The National Society Statutory Inspection of Anglican Schools (report October 2009))

The OFSTED report rated the behaviour of the pupils, their enjoyment of lessons, the care, guidance and support they receive, the personal development of pupils and the governing body all as outstanding, which is the highest grading inspectors can give. All other areas were rated as good- the next highest grading.

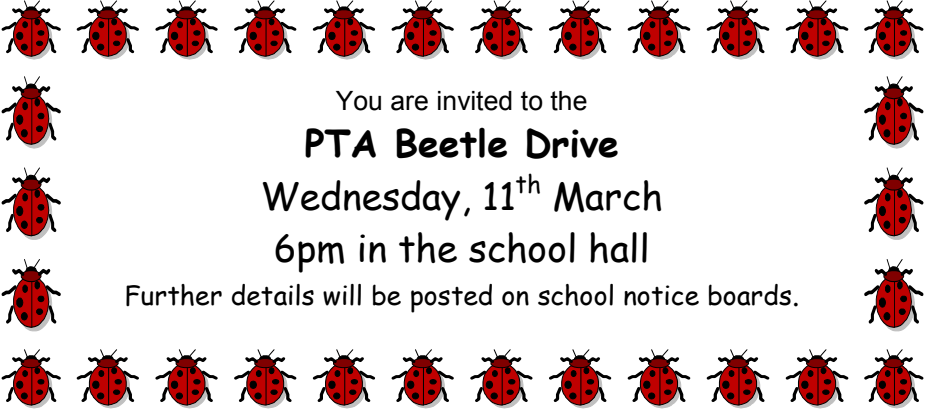
As illustrated by the OFSTED comment “Pupils respond extremely well to the nurturing approach of teachers, learning support assistants and midday supervisors, alike.” the quality of a school is a team effort and we thank all the parents for their cooperation and contributions to our school.

(The full report is on the OFSTED and school websites).

The National Society Statutory Inspection of Anglican Schools report recognised the management and leadership of our school and its distinctiveness and effectiveness as a church school as good.

“It is a community in which all members are valued and relationships are based on respect and tolerance... They (the staff) are an effective team and provide excellent role models for the children” (The full report is available on www.natsoc.org.uk)

We are delighted that the reports recognised our achievements and agreed with our next areas of development, namely the pupils' thinking and problem solving skills, the further development of the outdoor space for the early years class and the remodelling of the school entrance and administrative areas.



You are invited to the
PTA Beetle Drive

Wednesday, 11th March
6pm in the school hall

Further details will be posted on school notice boards.

If you would like to tour the school with a view to sending your child to the school, please call the school office on 01245 400772 to arrange a convenient time.

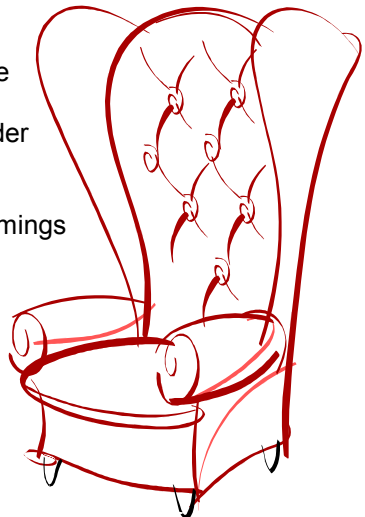
Linda Findlay (Headteacher)

Simon Houlding Upholstery

Est. 1997

Specialist in Restoration of Antique Furniture
Modern Suites & Loose Covers
High Quality Bespoke Furniture Made to Order
Repairs & Advice
French Polishing
Wide Selection of the Latest Fabrics & Trimmings

Tel. 01621 859484
Mob. 07990 972676
www.houldingupholstery.co.uk
Unit F, Stock Chase,
Heybridge,
Maldon CM9 4AA



EAST HANNINGFIELD PRE-SCHOOL



Although the snow has been fun, the children are all keenly looking forward to spring now, with the opportunity for outdoor play. In the mean time, we are waiting to hear if a grant application has been successful, which would allow us to spend some money on large soft blocks for indoor fun. We have already had one small grant this year, which is going towards a play microphone, so that the children can record their voices on the computer & play them back to hear how they sound to others.

A big thank you to the Hanningfield Wives, who recently donated the last of the money raised from their calendar to the pre-school. This will make a big difference to the school in such financially hard times.

Although the register is filling up, we do still have some places available at the pre-school. We take children from age 2 to under 5, with 3 year olds being funded by the government from the term after their 3rd birthday.

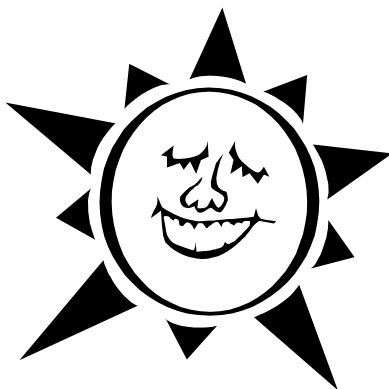
East Hanningfield Pre-School, registered charity 267508, runs at the Village Hall 09:15 to 11:45 Monday to Thursday during the school term.

Jenny Ash



VILLAGE FETE 2009 & SECOND HAND BOOK SALE

Planning meetings for this year's fete are underway – the next one is on March 23rd in the upstairs meeting room at the village hall. Do consider coming along if you have ideas to contribute, help to offer or are interested in running a stall; or contact me by phone or email. Although the fete is not until **12th September** (please put it on your calendar!), we are already booking attractions to entertain you again.



If you can't wait until September to offload all those paperbacks that are crowding your bookshelves, there's good news! We are holding a second hand book sale on Saturday 14th March, from 10 – 12.30 in the upstairs meeting room. Browse, buy, enjoy a cup of coffee – and bring any books you would like to donate. There will also be a book bin in the village shop during the week prior to the sale to collect unwanted books. Proceeds will go to Hanna's Field Charity and All Saints Church.

Jackie Feehan 400862
jackie@feehan.vispa.com

HANNA'S TOTS

These are busy times at Hanna's Tots. We have had to re-arrange the layout to accommodate all the new mums & babies. New equipment is due this month, bought with a combination of local authority grant money & the results of Christmas fundraising.

There are also changes afoot in the Village Hall, which will make it easier to access & store all the toys in the loft.



If you would like to come along to a session, Hanna's Tots runs at the Village Hall every Friday morning, from 09:30 to 11:30, for children under 5 & their parents / carers. We are also open in the school holidays, when older siblings are welcome to join in too. We have a vast array of toys to play with in the hall, in addition to those available on loan in our toy library. Other equipment is also available for hire, including a travel cot (ideal for grandparents expecting visitors) and a small bouncy castle.

Jenny Ash 400090



Helen Rose Glass
Fused Glass Workshops

- * Learn to make beautiful fused glass jewellery, dishes, suncatchers and coasters in East Hanningfield.
- * Taster sessions & full day workshops available.

- * Helen will be exhibiting at RHS Hyde Hall Gardens 2nd-4th May with The Guild of Essex Craftsmen.

www.helenroseglass.co.uk
01245 401118

EAST HANNINGFIELD W.I.

2009 started off well with our New Year lunch for members and guests. We had a very amusing speaker & the afternoon was much enjoyed. A forward note for your diary, we will be holding our Bring & Buy Charity Coffee Morning on Wednesday, 8th. April at 10.30am.



We meet in our hall on the 3rd. Wednesday of the month at 2pm with the exception of August, December & January when there is a slight variation. Why not come along and see what we are about? You will be most welcome.

Give me a call anytime

Lilian Crace 400288

Baddow Plumbing Services



**Replacement Boilers
&
Bathroom Suites**



**All Domestic Plumbing Work
Undertaken**

Free Estimates



01245 - 358355

Stephen Bryan

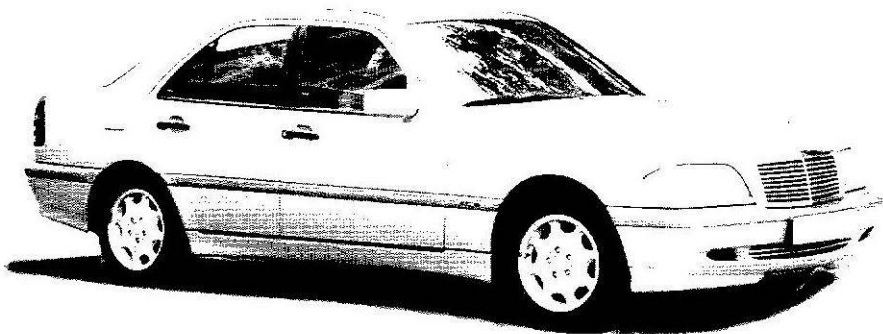
HANNINGFIELD MOTOR CO



MOT CENTRE

**SERVICING
DIAGNOSTICS
REPAIRS**

**MOT
£40**



TELEPHONE: 01245 400406

OPENING HOURS: MON-FRI 8.30AM TO 5.30PM

SATURDAY 9.00AM TO 1.00PM

Unit 23, East Hanningfield Industrial Estate, Old Church Road, East Hanningfield, Essex CM3 5BX