

# ***EAST HANNINGFIELD NEWS***

***Summer 2009  
No. 128***



## **FROM THE ACTING EDITOR**

Please continue to send articles and advertisements to me at karen.plumridge@btinternet.com or 2 Clinton Close.

**Copy date for the next  
edition is Friday  
14th. August.**



East Hanningfield News is published by East Hanningfield Parish Council and delivered, by volunteers, free to all homes in the parish. Inclusion of articles or advertisements does not signify endorsement by the Parish Council.

Karen Plumridge, Acting Editor 400628

## **FRONT COVER**

Why were we standing in the Village Hall cupboard with the Chairman of the County Council? Hanna's Field Charity had received a grant from the County Council's Community Initiatives Fund to build a staircase to make the loft space accessible for storage and convert an old shower room into storage for the Bowls Club. This has made storage space in the Hall much easier to use. Chairman, Cllr. Elizabeth Hart came along to the Village Hall open morning on 14th. March to mark the completion of the works. She also visited the Book Sale taking place that morning in the first floor meeting room.

The lower photo shows some of the volunteers who joined in the Village Tidy-up on Saturday 9th. May.

## PARISH COUNCIL

In the last News I mentioned the vacancy for a councillor. This was filled at the meeting at the end of March when Paul Garner was co-opted on to the Council.

I also mentioned the photograph to be taken for the Essex Chronicle regular "Village of the Week" article. The East Hanningfield pages appeared in the 19th. March edition. If you missed it you can still see it on the Chronicle's website at <http://www.thisistotalessex.co.uk/villageoftheweek.html>

Don't forget one of the rare visits of the "Saturday Standouts" for recyclable items will be on **20th. June from 7.45-8.45am**. This is your chance to get rid of your old TVs, furniture, fridges and so on. The only other dates this year will be **12th. September (Fete Day) 7.45-8.45am** and **24th. October 11.15am-12.15pm**.

Despite a forecast of rain the weather remained dry but cool for the Village Tidy-up on 9th. May, so no sun tans this year. A good turnout meant that the work was done quickly. Unfortunately, litter was found to have been dropped in the Village Hall Chase and on the path across the playing field within a couple of hours!

A new addition to the furnishings of the first floor meeting room at the Village Hall is a photograph of a committee established to organise the parish celebrations for the jubilee of George V. Gil Gordon, our local history recorder, has researched the records to identify all but one of those portrayed. Have a look next time you are there, perhaps at the next Book Sale, or see it on line in **Photographic Archive** under **Study Resources** on the Parish Council's website. If you have some interesting historic photographs of the parish and would be prepared to allow them to be published on the website please forward them to me with a description. Please write your name and address on the back of any photo you would like returned. I should hate to mislay someone's family heirloom.

Earlier this year PC revived the old custom of walking all the foot-paths in the parish. This is to make sure that they all still useable, and if not to deal with the problem locally or pass it the County Council for resolution. There are still some copies of the Parish Walks packs left, so if you have arrived in the parish since they were first distributed and would like a pack, please let me know.



We have been allocated dates for the sports coaching sessions during the school summer holidays for children aged 6 to 14 years. These will be multi-sports sessions on the playing field if the weather is fine but in the sports hall if it is raining. Please remember that it gets very hot on the playing field in the August sun so children should come ready plastered with sunscreen and should have a bottle of water with them,

which they should take home afterwards or deposit in a bin if empty. I mention it only because some managed to leave behind their rubbish at previous sessions. The dates are **Monday, 3rd., Tuesday 11th. & Tuesday 18th. August** all from 9.30am to 12noon. Playscheme dates are awaited but will be publicised on the website and noticeboards when known.



Parish Council Meetings continue to be held on Thursdays, the next three being 25th. June, 23rd. July and 20th. August. Agendas are published three clear days beforehand and appear on the noticeboards and the website. They are public meetings so you may come along and listen to the whole meeting and participate during Public Question Time.

Karen Plumridge, Clerk to the Council 400628  
[www.essexinfo.net/easthanningfieldparishcouncil](http://www.essexinfo.net/easthanningfieldparishcouncil)

## NEIGHBOURHOOD WATCH UPDATE

The NW organisation now has coordinators for most streets in the village (19 in all) but we need co-ordinators for Bicknacre Road and Nicholson Close and would like to hear from anyone willing to look after these locations.

There has been a number of attempted/successful burglaries in the village over the last month or so which hopefully most people will have made of aware of via their street coordinator and so perhaps its timely to include in this issue of the News a top tips list of dos and don'ts. If you aren't sure how to contact your local NW co-ordinator go on the Parish Council website where you will find the details about the NW organisation in East Hanningfield.

The NW meet in the Village Hall Meeting Room at about 3 monthly intervals and usually with a representative of the police present to provide an update on local crime and related issues. The next NW meeting will be in the Village Hall Meeting Room at 8pm on Tuesday 9 June. If you are interested in knowing more about NW come along to the meeting.

Geoff Dickman /Mike Plumridge

## NEIGHBOURHOOD WATCH - TEN TOP TIPS

1. Fit sturdy deadlocks to external doors and strong locks to windows, and make sure they are locked at all times.
2. Fit a door chain where possible, and use it!
3. Always remove all keys from inside locks, and **keep them hidden out of sight** in a safe place.
4. Never leave a spare key in a convenient and obvious hiding place.
5. Mark your property (Martin Harcourt-Williams has the kit), so the Police can identify ownership of stolen property, including bicycles.

6. Lock your back or side gate at night, or when away from your property! **And remember that thieves prefer to enter via the back of a house, where they can't be seen.**

7. Install outside security lighting - back and front. If other people can see your property a burglar might think twice.

8. Keep your tools and ladders securely locked-up.

9. When out in the evenings, leave your lights on.

10. **And when on holiday, don't forget to cancel newspapers and milk. If mail is visible ask a neighbour to remove it on a daily basis. Don't leave curtains drawn! Also leave your contact details with a neighbour.**



# CARPETS & VINYL

◆ FREE QUOTATIONS

◆ LOCAL MAN –  
OVER 25 YEARS IN  
THE BUSINESS



◆ VIEW SAMPLES IN  
YOUR OWN HOME

◆ SUPPLY AND FITTING

CONTACT  
NEIL POULSON

PHONE 01245 221316

MOBILE 07808 123676

email: [n.poulson@btinternet.com](mailto:n.poulson@btinternet.com)

## VILLAGE FETE 2009

This year's fete is now less than four months away! We have already secured some good prizes for this year's draw, and the programme of events is taking shape. What we need now are volunteers to help on the day. Many people who ran stalls last year will be doing so again, and would be happy to have additional support, so could you consider giving an hour or so to selling books or cakes, for example? Or, if you would prefer to spend the afternoon being entertained, then why not come and give us a hand setting up in the morning – or clearing up at the end of the day? The more the merrier (and faster)! And if you have a new idea for stall, we have space to accommodate you. Please support us!



Jackie Feehan 400862  
[Jackie@feehan.vispa.com](mailto:Jackie@feehan.vispa.com)

## BOOK SALE

There will be another sale of nearly new books on Saturday 20<sup>th</sup> June in the upstairs meeting room at the Village Hall, from 10.00am to 12.30pm. Tea and coffee will be available. Please look for the box for any donations in the shop during the week prior to the sale. Proceeds to Hanna's Field Charity & All Saints' Church.



## **ALL SAINTS' CHURCH—FROM REVD PAM**

It is a privilege for All Saints' Church, as the parish church of East Hanningfield, to be able to serve the community of the village. One of the ways we believe we can do this is to be able to offer prayers to God on behalf of the people of the village. Each Sunday at our morning service our prayers include committing different needs in the world to God; the needs can be global, local and personal. We do not necessarily know the answer to each need but we do believe that, as we pray, we are committing our human concerns to God who loves us and placing them into His hands and care. We also believe that when we pray we are meeting God and expressing faith in Christ who is also continually praying for us.



Any one of us may find ourselves in a situation where there is nothing else we can do except to pray or we may be at a point where we cannot pray ourselves and need others to do this for us. If you have a need or concern which you would like us to offer to God on your behalf it would be our privilege to include it in our prayers in the Sunday morning service.

We have a number of ways in which requests for prayer can be taken:

- They can be emailed to: [ehparishprayer@yahoo.co.uk](mailto:ehparishprayer@yahoo.co.uk)
- Or they can be phoned to Revd Pam or one of the



churchwardens (see contact details below)

- Or we have a sheet at the back of the church each Sunday morning where requests can be written before the service and included in the prayers that day.

Practical details.

We always use just the first name of the person or the first name and initial of surname if the prayer is for a person. You may add a short phrase to clarify their situation if you want. If a person to be prayed for lives in the local community would you please make sure they are happy for their name/concern to be offered in prayers in the church. It is also useful to know whether the request is a 'long term' need or an 'immediate' need and we are pleased to know any changes or progress which take place. If you want, your request can also be printed in our Pew Leaflet which goes into many homes in the village and can be used in private prayer.

### ALL SAINTS' CHURCH PRAYER REQUEST

Name of person to be prayed for .....

Situation (optional).....

Long term/Immediate care (please delete as appropriate)

Please include in the next Pew Leaflet  
Yes/No (please delete as appropriate)

Rev Pam Pennell Tel: 01277 841179  
Mobile: 07974-622-412  
Email: [pencof.pam@btinternet.com](mailto:pencof.pam@btinternet.com)



## **From the Churchwardens**

Just a reminder of our 'new' monthly service pattern –

DATE	TIME	SERVICE
1 <sup>st</sup> Sunday	8.30 am	Holy Communion (BCP)
	10.00 am	All Age Service (CW) – followed by refreshments
2 <sup>nd</sup> Sunday	11.00 am	Holy Communion (CW)
3 <sup>rd</sup> Sunday	11.00 am	Holy Communion (CW) – followed by refreshments
4 <sup>th</sup> Sunday	11.00 am	Holy Communion (CW)
5 <sup>th</sup> Sunday	11.00 am	Variable. Likely to be 'something different'

***Enhanced hearing system for those with hearing aids and able to switch to 'T,' at all services and events in the Church***

### **Holiday cover for the Rev'd Pam –**

We welcome Rev'd Sandy Southee from St Mary's Great Baddow to take our Holy Communion Services on 28<sup>th</sup> June at 11.00am and again on 5<sup>th</sup> July at 8.30 am. Also Rev'd Ann Kosla returns once more to take our All Age Service on 5<sup>th</sup> July at 10.00 am. We are more than grateful to both of them for squeezing us into their already well-filled work schedules.

**N.B.** Whilst Pam is away, please do not hesitate to contact either of us (as below) if there is any matter which we can look at for you before she returns.

**We look forward to seeing you at the following summer events**

**Saturday 20<sup>th</sup> June at 7pm – "Music for a Summer's Evening"**, in Church. Light music, including Gershwin as well as classical, provided for your enjoyment by choir and instrumentalists both young and a bit older.

**Friday 3<sup>rd</sup> July 6pm to 8pm - Open Garden at the The Limes,** on The Tye, in aid of church funds. Enjoy a glass of 'bubbly' to sip as you wander, or just relax on a garden seat. – always a very pleasant evening at the end of a busy week. Plants for sale, raffle, and cake stall

**Don't forget you can find us at any time at -**  
[www.essexinfo.net/easthanningfieldparishcouncil/village-diary-2009/](http://www.essexinfo.net/easthanningfieldparishcouncil/village-diary-2009/) for the latest information on what's happening and when, updated each month. Simply click on 'All Saints'.

Stan Gordon 400298 e.mail: sgordon@care4free.net  
Ron Attenborough 400361 e-mail: ronald304@btinternet.com

*The chance to see The Limes garden  
in a different month .....*

*on FRIDAY 3rd JULY from 6 -8 pm*

*you are welcome to wander around the garden  
and enjoy the roses with a glass of fizz, all in  
aid of the village church!*

*Plants and cakes for sale.*



# Intercounty

Quality is always a prime selling feature and there is no exception with these fine properties on offer now; we are successfully selling similar homes in Chelmsford and the villages – so if you're positive about moving house and seriously want to get moving call me now on

**01245200024**

**Carol Phillips**

Your local Property Professional  
Covering Chelmsford and the villages



**Great Baddow  
£335,000**

Sought after two lined Avenue, recently extended just completed updating carefully retaining some original features with contrasting custom built modern Granite finish Kitchen, Glass bespoke Bathroom and Shower rooms, formal bar and Indian style paved garden. No onward chain.



**Great Baddow  
£455,000**

Recently built three storey townhouse offering FIVE BEDROOMS and THREE BATHROOMS, modern fitted Kitchen/Breakfast room, double aspect Lounge, Dining Room, garage and garden. Convenient location near Park n Ride, excellent schools and leisure pursuits.



**NEW**

**Great Baddow  
£309,000**

Deceptively spacious with benefit of substantial rear extension now offering FOUR BEDROOMS, open plan Living/Dining/Kitchen PLUS additional Lounge, Playroom/Study and domestic shower etc. Exceptional outlook overlooking landscaped 145ft garden.



**Cold Norton  
£335,000**

DETACHED THREE DOUBLE bedrooms with impressive bathroom with potential to extend over garage (STPP). Offering generous living space including Lounge, Dining room, Kitchen/Breakfast room, Playroom/Study, conservatory overlooking garden. No chain.



We do the complete package:  
HIPS, FS,  
conveyancing  
removals  
Call us today  
01245 200024



**07984192938**

Buying, Selling or Letting?  
Call Carol Phillips your local Property Professional

**01245200024**

## BETHEL CHURCH NEWS



At Bethel, we support a childrens charity called Kids Alive. They have opened several orphanages around the world, giving love, shelter and food for hundreds of children. Next April we will be sending a group of 22 from Bethel, out to Kenya to carry out a work programme in an orphanage north of Nairobi. Each individual will be funding themselves through sponsorship and as a church we will be raising the necessary funds to pay for the materials that we need for the project.

If you would like to know more about Kids Alive, please go to [www.kidsaliveuk.org](http://www.kidsaliveuk.org)

**We also extend a warm welcome to you - to join us at any of the following dates:**

### **What's On?**

Tuesday 26 May - Ladies Coffee Morning (10:00am)  
Saturday 13 June - Café Bar (11:00am to 1:00pm)  
Saturday 27 June - Garden Party (3:00pm to 7:00pm)  
Tuesday 30 June - Ladies Coffee Morning (10:00am)  
Saturday 18 July - Café Bar (11:00am to 1:00pm)  
Tuesday 28 July - Ladies Coffee Morning (10:00am)  
Saturday 01 August - Mens Breakfast (8:45am)  
Saturday 15 August - Café Bar (11:00am to 1:00pm)  
Tuesday 25 August - Ladies Coffee Morning (10:00am)  
Sunday 30 August - Church Picnic (1:00pm at Hanna's Field)

### **Regular Meetings:**

Tuesday - Ladies Meeting 10:30am, Prayer Meeting 1:30pm and 7:30pm  
Thursday - Bible Study 7:30pm  
Sunday - Family Worship 10:45am

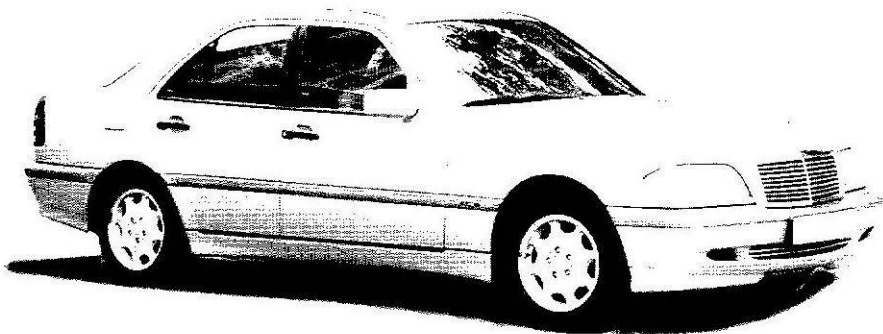
# HANNINGFIELD MOTOR CO



# MOT CENTRE

**SERVICING  
DIAGNOSTICS  
REPAIRS**

**MOT  
£40**



**TELEPHONE: 01245 400406**

**OPENING HOURS: MON-FRI 8.30AM TO 5.30PM  
SATURDAY 9.00AM TO 1.00PM**

Unit 23, East Hanningfield Industrial Estate, Old Church Road, East Hanningfield, Essex CM3 5BX

# **EAST HANNINGFIELD C OF E PRIMARY SCHOOL**

Once again we are in the busiest term of the year. Our oldest class enjoys their week's residential journey to the Isle of Wight. Other highlights of the term include Book Week, Junior Music Festival and the chance to compete in seasonal sports, including cricket and athletics against other schools in the area.



**Please join us at our  
Safari Summer Fete  
Friday, 3<sup>rd</sup> July from 5-8pm**

**Why not have tea here whilst watching gym and dance displays and listening to the choir?**

**Our Open Evening is on Tuesday, 14<sup>th</sup> July 6-8pm. This is primarily an opportunity for our pupils to show their parents and other family members the school and what they have been doing. However we also extend an invitation to other local families who may wish their children to come to the school in the future.**

**Looking forward to seeing you in July.  
Linda Findlay (headteacher)**

**ROSEHILL HATCHERY**



**"New Life Every Day"**

**Breeders &  
suppliers of all  
types of chickens**

**Bantams,  
Ornamental Pheasants,  
Ducks, Black Swans**

**Whole range of poultry equipment**

**Bedding,**

**Made to measure Arks, Coops, Feeders,**

**Drinkers, Red Mite Powers, Sprays,**

**Chicken Feed, Duck Feed, Fish Food,**

**Keepwell VermX 100% natural tonic**

**Call "Ray"**

**01245 401005—07775 740 561**

**ROSEHILL HATCHERY  
CREEPHEDGE LANE  
EAST HANNINGFIELD  
CHELMSFORD  
ESSEX CM3 8BP  
acs ltd2@btconnect.com**





## **PARISH PLANNING—Out of the mouths of babes!**

As part of the commitment to involve as many parts of the community as possible in the Parish Plan I had the great pleasure of spending an afternoon at the village school. Following an invitation through the Governors I was made welcome by the Head Mrs Linda Findlay and met with representatives from each class through the school council. Each class had previously been invited to consider what they value in the village and what they would like to be changed. I was excited by their enthusiasm and the fact that their thoughts are not that different from the adults on many matters. I was heartened by the value they placed on the countryside surrounding the village and their concern for the wildlife. They appreciate what has been done with the opening of the post office / shop, the new equipment in the play area and availability of Hanna's Field with the football, tennis pitches etc.

There were multiple requests for additional equipment in the play area with quite specific requests i.e. Monkey Bars, Hamster Wheel and return of the old wooden climbing frame!

However all was not positive and there was unhappiness at the non-availability of organised sports (football, cricket, angling and horse riding), coaching and scouts/guides in the village. I was particularly saddened by the fact that none of the children knew the village had a cricket pitch let alone a team! No wonder village cricket teams are struggling for players. Some of the children are pursuing these interests but only by having to travel outside the local area?

Finally the one sad comment for me was that two groups asked if we could ensure the police catch the robbers who come when they are asleep!


Overall the children were a credit to the school and their parents and I welcome the opportunity of doing something further with them in the future.

The questionnaire is now finished and a field testing exercise completed. We are intending to print and distribute the completed questionnaire in the coming months.

Stephen Snewin

Stephen.snewin@imperail.nhs.uk

# Lashcara Beauty & Spa Treatments



*"Special Introductory Offer on 3D Semi-Permanent Eyelash Extensions of £45 for a limited period only (Normally £65)"*

*'3 for 2 Offer on all Treatments when booked at the same time (cheapest free)'*

Call Kay to request a brochure or make a booking on:  
07946 775 613

## Range of Treatments

- \* Guam Microcellulaire Facial & Body Treatments
- \* Swedish Massage
- \* Manicures/ Pedicures
- \* Eyebrow Threading
- \* Semi-Permanent Eyelash Extensions
- \* Eyelash tinting and perming
- \* Waxing

Located within grounds of:

Oakland House  
South Hanningfield Road  
Rettendon Common  
CM3 8HQ

lashcarabeauty@aol.co.uk

## HANNA'S FIELD CHARITY

The Charity is responsible for the running of the Village Hall and Playing Fields for the benefit of the residents of the Parish of East Hanningfield. The Charity was set up over twenty five years ago to ensure the Village Hall and Sports Facilities are kept in perpetuity for the benefit of the villagers. The Charity is registered with the Charity Commissioners and has a number of Trustees representing the hall users and other village Trustees who are elected annually. The Charity is required to hold an Annual Meeting at which the beneficiaries of the Charity are able to question the Trustees on the running of the Charity. This year the AGM was held on the 14<sup>th</sup> April and I must assume that we are running the



Charity to your satisfaction as only one member of the public came to the meeting. I have included my Annual Report in this edition of the Hanningfield News to ensure that all villagers hear about the Charity's achievements of the last year and some of our plans for the new year. If you would like to know more about the charity or would like to get involved please do not hesitate to contact me or any member of the committee.

Colin Warren,  
Chairman Hanna's Field Charity  
01245 401050 [cwarren132@aol.com](mailto:cwarren132@aol.com)

### **Hanna's Field Charity Chairman's report to the 2009 AGM**

The last year has been a successful year for the Charity. We were rewarded in our bid to the Communities Initiative Fund with

a grant of £6,000 which enabled us to install a proper staircase to give safe access to the upstairs storage area and convert the old former changing room to provide a dedicated secure storage area for the East Hanningfield Short Mat Bowls Club. We have not given up looking for funding for our ambitious project to build a community suite above the small hall but it is proving to be hard to raise the required funds.

The work load of the Charity has been borne by very few for the gain of the many villagers and organisations who use the facilities at the village hall and sports field. No officers receive any remuneration for their hard work; they are all volunteers and all should be thanked for their efforts on behalf of the village. I would like to thank Paul Garner, who has recently left the committee, for all his hard work on behalf of the Charity, particularly in providing drawings and proposals to support our numerous grant applications.

I am also very grateful to Dawn & Terry Mills who maintain the Hall and organise the bookings. The Essex Probation Service continued their work with us which enabled the Charity to maintain the Hall and grounds for the benefit of all villagers.

It is good that the Village Shop and Post Office continue to survive. If we are to retain the Post Office in the village it is essential that we all use the facility.

The Annual Art Show continued as a major fund raising event exhibiting works from over 80 artists and raising over £1,300. This years Art Show will be on the Saturday 11<sup>th</sup> July 2009.

The Village Fete, a joint venture with All Saints Church, was very successful raising over £3,500 under the new Chairmanship of

Jackie Feehan and also providing a fun event for all the villagers. It was good that the event was also supported by several of our local businesses. This year's fete will be on Saturday September 12<sup>th</sup> 2009.

The Charity also jointly organised with the Parish Council a Village Barn Dance which was a well attended and fun event dancing to Lyckerty Splyt.

The Charity have used some of the funds raised this year to re-equip the upstairs meeting room with new furniture which will provide a more comfortable environment and hopefully encourage greater use of the facility. We are obtaining estimates for the main hall floor to be resurfaced and hope to replace the floor in the coming year.

The cooperation between the Charity and the Parish Council has been enhanced with regular liaison meetings which have brought about a number of detailed improvements and suggestions

If you are reading this report have you considered joining the committee? We would welcome new members to assist in the future development of the Charity.

More information about the charity can be found on our website which is part of the Parish Council website <http://www.essexinfo.net/easthanningfieldparishcouncil>

If there are any questions I will do my best to answer them

cpw 14/04/09

## HANNA'S TOTS

Spring has blown in and brought with a a renewed burst of energy from our children on a Friday morning. Also, a spate of birthdays meant a lot of cake has been consumed!



We continue to thrive and are always ready to welcome new visitors, as well as old friends. We will be sorry to lose Jenny and Henry, but Rose and I will try to keep things running to her high standards over the next year! If anyone is interested in helping to run the toddler group, please speak to one of us. Looking forward to seeing you soon.

Fiona Ward 400944

### **Baddow Plumbing Services**



**Replacement Boilers  
&  
Bathroom Suites**



**All Domestic Plumbing Work  
Undertaken**

**Free Estimates**



**01245 - 358355**

**Stephen Bryan**

## EAST HANNINGFIELD WI

The year once again is rushing by with a lot of plans for the coming months. A big “thank you” to all of you who came along to our Charity Coffee Morning. It was a great success and we were able to send £305 to the local McMillan Nurses. If you are thinking of coming along to one of our meetings we meet most months on the 3rd. Wednesday at 2pm in our Hall but there is a slight change in January, August and December so just give me a call to check. You will be very welcome.



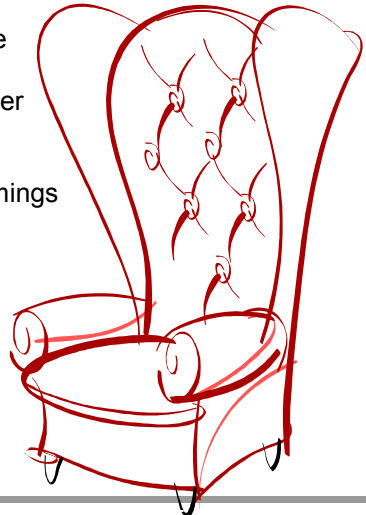
Lilian Crace 400288

## *Simon Houlding Upholstery*

*Est. 1997*

Specialist in Restoration of Antique Furniture  
Modern Suites & Loose Covers  
High Quality Bespoke Furniture Made to Order  
Repairs & Advice  
French Polishing  
Wide Selection of the Latest Fabrics & Trimmings

Tel. 01621 859484  
Mob. 07990 972676  
[www.houldingupholstery.co.uk](http://www.houldingupholstery.co.uk)  
Unit F, Stock Chase,  
Heybridge,  
Maldon CM9 4AA



# EAST HANNINGFIELD ANNUAL ART EXHIBITION AND SALE

**East Hanningfield Village Hall  
Saturday 11th July 10.00 until 6.00,  
entry £1.00 per adult.**



**Artists wishing to exhibit should contact  
Wendy on 01245 400797  
by the end of June**