

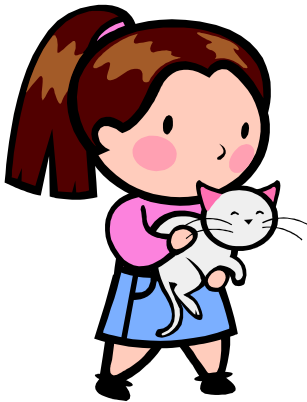
***EAST  
HANNINGFIELD  
NEWS***

*Winter 2008  
No. 126*



## FROM THE ACTING EDITOR

Please continue to send articles and advertisements to me at 2 Clinton Close or [karen.plumridge@btinternet.com](mailto:karen.plumridge@btinternet.com)



**Copy date for the next edition is Friday, 13th. February.**

East Hanningfield News is published by East Hanningfield Parish Council and delivered, by volunteers, free to all homes in the parish. Inclusion of articles or advertisements does not signify endorsement by the Parish Council.

Karen Plumridge, Acting Editor 400628.

## FRONT COVER

Congratulations to Owen Woodroff who won the East Hanningfield News Christmas Cover Competition 2008. His entry is on the front cover.

On the back cover you can see the runners up from each class: Class 1, Ianon Williams, Class 2, Lidia Williams, Class 3 Anna Lewis & Class 4, Emily Sneller. There were 38 entries this year, and the standard was very high making judging a difficult task. So, well done to all the entrants and thank you to East Hanningfield Primary School for participating once again.



*Snowman by  
George Lewis*

## PARISH COUNCIL

About seventy people came along to the Village Hall on the evening of 15th. November for a barn dance with the Lycerty Splyt Ceilidh Band, which was organised jointly by PC and Hanna's Field Charity. The purpose of the event was to provide an enjoyable social event where villagers could get together. Those who attended certainly enjoyed themselves and got plenty of exercise at the same time. Profits from the event will be going into the Charity's fund-raising pot to help provide improved facilities in the Hall or on the playing fields. Thank you to all the people who helped make the evening a success and in particular to Mike Harris for providing the bar.

On a less happy note, you will remember PC's campaign against the proposal for the new Hyde Hall Garden access to be off Creephedge Lane. The Parish Council was critical of the proposed routing of traffic via the Rettendon Turnpike and A132 in the Hyde Hall "master plan", because it was considered unrealistic for traffic coming from the A12, to take a circuitous route when a look at a map would clearly show the shortest route was through East Hanningfield, and that was before satellite navigation became popular. When planning permission was granted PC and our Borough Councillors were told that the access would be aligned in such a way as to make it difficult for vehicles to exit north towards East Hanningfield. Recently, it was noticed that construction had started but there appeared to be no restrictions on egress. This was queried with the Borough Council's Planning Department who at first could find no record of the intention to create a controlled exit, but when the documentation was identified responded that there was something included in the legal agreement in relation to **signage** directing traffic south. They say it would be unreasonable and unrealistic to expect no traffic to travel north from this exit and it may be the case that persons travelling from the surrounding area would come by car and travel in

from the north, so the Highway Authority would not support a junction arrangement which could cause potential confusion on the highway. Sadly, the fear is that the result of this will be as PC and our Borough Councillors warned: increased traffic through East Hanningfield village.

At the time of writing PC is waiting to hear from the County Council about highway safety measures that PC proposed for the village. The proposals are being prioritised by ECC using a points system, and will be judged against projects put forward by other parish councils. If our projects get more points than the others funding will be allocated. Results were expected towards the end of October, so had they been on time they would have been announced in this edition. PC identified six areas of major concern. For pedestrians there was lack of footway on the Common and from Willis Farm to the Old Forge; the inadequacy of the footway beside the Horse-shoes garden; and the erosion of the verges beside Abbeyfields and at the southern village-gateway. For traffic there was the problem of overtaking on the bend where Old Church Road meets the Tye. Clearly these are not the only problem areas in the parish, but PC was told to limit its proposals in order to have any chance of success.

Please note that the PC Meeting in December will be early in the month on the 11th, and will be attended by our County Councillor Lord Hanningfield. In January Meetings will return to the **fourth** Thursday of the month. They take place in the first floor meeting room at the Village Hall, usually at 8pm. The Agenda is posted on the noticeboards and on the website at least three days before, and copies are provided for members of the public who come along. PC hopes to see you there.

Karen Plumridge,  
Clerk to the Council  
400628

[www.essexinfo.net/easthanningfieldparishcouncil](http://www.essexinfo.net/easthanningfieldparishcouncil)

## BOROUGH COUNCILLOR'S MESSAGE



Like many people in the village I missed the 'Antiques Road Show' on Sunday November 2nd to go to church to see the Reverend Pam installed as our new priest. I wish her well as she embarks on what I am sure will be a challenging and exciting mission.

Had I watched the 'Antiques Road Show' I would no doubt have been reminded that a pair of objects is worth much more than twice the value of a single object. This is quite a good parable for village life.

We have many groups of people whose roles overlap; the school, the business community, the Sports Club and sports groups, the WI, the fantastic new parish planning group, Hanna's field charity, the pre school group, Bethel Chapel, not to mention the Parish Council.

I cannot think of a better representation of God's work than to bring all these together as 'Community' so much more strong in unity than the sum of their individual parts.

Good Luck Pam and God's Blessing and Peace to all at Christmas.

Sincerely

Mike Harris 400142

Member for Bicknacre East and West Hanningfield - Chelmsford Borough Council.

[michael.harris@chelmsford.gov.uk](mailto:michael.harris@chelmsford.gov.uk)

## NEIGHBOURHOOD WATCH



Crime in the village is fortunately on the low side at present, BUT we must not be complacent. Recent crime in the village has involved properties in The Common and Payne Place - opposite ends of the village. However this is not new, as previously Highfields Mead and Ashley Green have both been targeted. And crime elsewhere in neighbouring towns and villages appears to be growing with cars and bicycles being popular and of course burglaries and attempted.

Too many homes have side gates unlocked, or no gates at all, and some homes have sheds in their back gardens, also without locks or unlocked. One of the above burglaries involved entry by the back door. It's making it too easy for the criminal element within our society to have a field day, especially in view of the recession.

The Police have also drawn to my attention the number of homes in total darkness after dark. Okay after midnight, but not early evening just as it gets dark and later before midnight. It's too obvious that the occupants are not at home. Similarly some people close their curtains when they go on holiday, so what does this say to a potential burglar?

The choice is largely your own especially as the Police can't be everywhere 24/7, so if you see anything suspicious please notify the Police direct by calling 999 in an emergency, or 0300-333-4444 when your report is not urgent. Your NHW team would also appreciate your advice of any incident, even when only remotely suspicious.

Geoff Dickman  
07968112179

## HANNA'S TOTS

Hanna's Tots runs at the Village Hall every Friday morning, including school holidays, from 9.30 to 11.30 and is for children under 5 and their parent/carers.

We have a vast array of toys to play with in the hall, and toys on loan in our toy library.

Other equipment is also available to hire, including a travel cot and a small bouncy castle.

Jenny Ash 400090



## CARPETS & VINYL

◆ FREE QUOTATIONS

◆ LOCAL MAN –  
OVER 25 YEARS IN  
THE BUSINESS



◆ VIEW SAMPLES IN  
YOUR OWN HOME

◆ SUPPLY AND FITTING

CONTACT  
**NEIL POULSON**

PHONE 01245 221316

MOBILE 07808 123676

email: [n.poulson@btinternet.com](mailto:n.poulson@btinternet.com)





## VILLAGE FETE 2008

This year's village fete was a great success, raising just over £3500, which is considerably more than in any of the preceding eleven years for which we have records. Many factors contributed to that success : a gloriously sunny afternoon; even more football teams competing than usual; good advance sales of draw tickets; more attractions and stalls; and a significant increase in help and support before the fete and on the day. The cricket bat, donated by Warsops and signed by the Essex team, was auctioned at the end of the afternoon, for

£200. The fete proceeds are divided between Hanna's Field Charity and All Saints Church. Our grateful thanks go to everyone who came, contributed and, we hope, had a good time!

There will be a fete next year – on September 12<sup>th</sup>. Buoyed up by this year's positive outcome, the current committee is remaining in place, but with a couple of valuable members moving on. If you would like to see the fete continue beyond 2009, then do consider getting involved. Do you have publicity or marketing skills? Are you a dab hand with a barbecue? Proficient at persuading people to part with a pound - or several? Are you new to East Hanningfield and interested in meeting people and participating in village activities? Or just have suggestions to make, enthusiasm and a little spare time? We do need new blood on the committee and in the support team.

Our first meeting for next year's fete is on Wednesday 14<sup>th</sup> January at 8pm in the village hall upstairs meeting room. You will be most welcome.

Jackie Feehan and the Fete Committee.  
400862/jackie@feehan.vispa.com



# EAST HANNINGFIELD W.I.

With Christmas looming it's time to cast our mind over the past year and it has been a good one with some new members and our fund raising has been good, hard work but fun.



Our Christmas meeting will be on **Wednesday, 10th. December** at 2pm.

We have some lady hand bell ringers coming to entertain us. Why not come along? We would love to see you.

2009 will get off to a flying start with our New Year lunch which will be back to the third Wednesday but 12.30 for 1pm. After that we'll be back to 2pm. If you are at all confused about this just give me a ring.

Here's hoping to see you.

Lilian Crace  
400288

## **KOOL NOTE KIDS – PERFORMING ARTS CLUB**

Thursdays during term time – 5.00pm-6.30pm  
W.I. Hall, East Hanningfield - £4.00 per wk  
Workshops – Dance – Singing – Drama  
Opportunities to participate in performances, displays  
and exams — For further information please phone  
**Natalie 07984 411465**

## **MESSAGE FROM THE NEW PRIEST-IN-CHARGE**

The church was filled with flowers, candles, light and people singing. The occasion was my licensing service as priest at All Saints' Church on Sunday 2 November. As well as having old friends attend the service my husband, John, and I were warmly welcomed by members of East Hanningfield village community. It was a beautiful start to my ministry here and I am very much looking forward to meeting more folk as well as taking advantage of the invitations to 'come and have a cup of tea' which have been offered already to me.

One of my main interests will be the village school and so I hope to get to know the children and staff soon. My own children are grown up now and live in London and, as we have no grandchildren yet, I shall enjoy the company of the East Hanningfield school children and perhaps also the pre-school children.

In December I shall attend the WI meeting. I have never yet been to a WI meeting although women's issues are of interest to me. I am one of the Bishop's Advisors for Women's Ministry and also sit on a committee which is working for ordained women in the Church of England. While this entails a lot of talking I also spend much time with my head in books as I follow an extended course of study. In fact, we have turned our son's bedroom into a library in order to accommodate all the books I need! However, this room now comes in useful for other things such as the tutoring which I do for those training for lay Readership in the church.

One of the things I am most looking forward to is the special time of Christmas in church. We have added a special service for children on Christmas Eve at 4.00pm where the children can dress the Jesse tree as well as decorate the crib and we

can all sing carols. This is in addition to the All Age Service on 7 December at 11.15am where we have a Christingle theme with candles in oranges! We will, of course, still have Nine Lessons and Carols on Sunday at 3.00pm on 21 December and a Mid-night Holy Communion starting at 11.30pm on Christmas Eve. There will also be a short Holy Communion at 10.00am on Christmas morning which children are welcome to attend.

If you come to church you may see me sometimes accompanied by my husband. John is a General Practitioner in Stock where we live. We met at a hospital in the east end of London when I was a radiographer and we moved to Chelmsford later. Although we are both busy people we manage to maintain an interest in ballet, opera, reading and walking. John also sails the sea but I confess to not being the sailor he is! Our home is made complete by the addition of two cats who have somehow taken control of us so that we pander to their needs. I am not sure how it happened but they seem very happy. . .



Looking forward to getting to know you.

Rev Pam Pennell  
Priest-in-Charge of All Saints' Church  
01277 841179 mob:07974- 622-412  
[pencof.pam@btinternet.com](mailto:pencof.pam@btinternet.com)

## **...AND FROM THE CHURCH WARDENS –**

In the Autumn issue of E H News we suggested you should “watch this space” for news of a new clergy appointment, but never in our wildest dreams did we imagine that it would all be done and dusted by the time of the next issue. We wish to record our grateful thanks to all those concerned – Bishop Laurie, Archdeacon David Loman, Rural Dean Andy Griffiths and of course the Rev’d Pam Pennell herself – for the speed with which each one handled the due processes and made the necessary preparations, giving us at East Hanningfield probably the shortest Interregnum ever of just 6 months. We give thanks to God for making the ‘impossible’ possible.

It was a great joy that so many of the community came to share in Pam’s first service, on Remembrance Sunday, to join in the Act of Remembrance around the village War Memorial on the green outside All Saints’, to share in worship together, and then afterwards to enjoy a display of fascinating personal wartime memorabilia over a cup of coffee.

We look forward with great anticipation to the special Christmas services at All Saints’ to which Pam refers above. We give fuller details of these below, together with our regular services for the coming weeks. You will find a warm welcome at ‘The Church on The Tye’.



Pam will be working closely with us and the PCC to ensure the most effective use of her time – initially the equivalent of two days a week whilst she is studying for her PhD and managing other Diocesan roles. However, she desires to be as accessible as possible within these constraints, and offers two telephone numbers – **At home**, and with an answerphone for messages when not available – **01277 841179**

**When out & about**, a mobile number so that she can respond if already in the locality – **07974-622-412**.

And don't forget you can look us up on the village web site for more information which we update each month –

[www.essexinfo.net/easthanningfieldparishcouncil/village-diary-2008/](http://www.essexinfo.net/easthanningfieldparishcouncil/village-diary-2008/) and click on **All Saints**

**Stan Gordon –Tel:01245 400298**

**Ron Attenborough – Tel:01245 400361**

## *Simon Houlding Upholstery*

*Est. 1997*

Specialist in Restoration of Antique Furniture

Modern Suites & Loose Covers

High Quality Bespoke Furniture Made to Order

Repairs & Advice

French Polishing

Wide Selection of the Latest Fabrics & Trimmings

Tel. 01621 859484

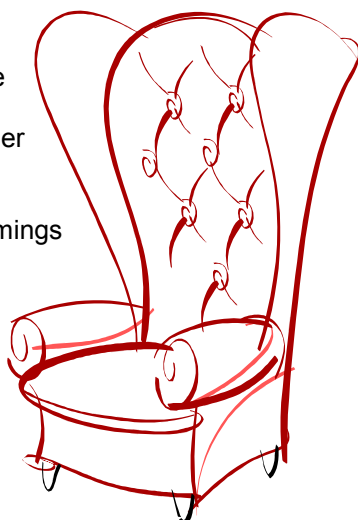
Mob. 07990 972676

[www.houldingupholstery.co.uk](http://www.houldingupholstery.co.uk)

Unit F, Stock Chase,

Heybridge,

Maldon CM9 4AA



# SERVICES AT ALL SAINTS' CHURCH

Dec 7th	11.15 am	All Age Service with Christingle theme, followed by refreshments
14th	11.15 am	Holy Communion with Baptism
21st	11.15 am 3.00 pm	Holy Communion ( <i>shortened service</i> ) Service of Nine Lessons & Carols, followed by refreshments
24th	4.00 pm  11.30 pm	Christmas Eve - Carols, Crib & Tree Service – for children of all ages Midnight Holy Communion
25th	<u>10.00 am</u> ( <i>Note earlier time</i> )	Christmas Day - shortened service of Holy Communion & children welcomed
28th	11.15 am	Holy Communion – led by Archdeacon David Lowman
Jan 4th	11.15 am	All Age service, followed by refreshments
11th	11.15 am	Holy Communion
18th	11.15 am	Holy Communion ( <i>shorter service</i> )
25th	8.00 am 11.15 am	Holy Communion ( <i>Book of Common Prayer</i> ) Matins



Snowman by  
Cassie Welch

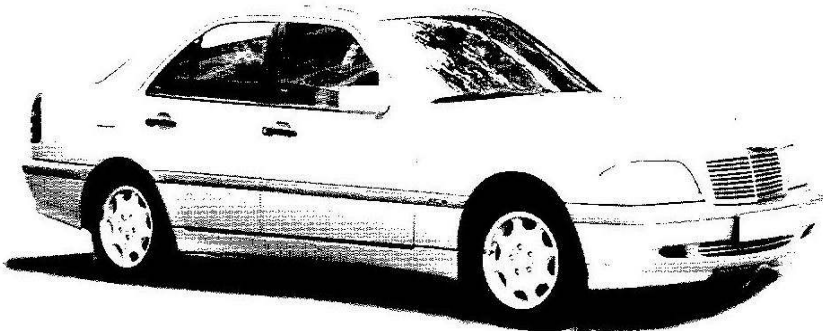
# HANNINGFIELD MOTOR CO



# MOT CENTRE

**SERVICING  
DIAGNOSTICS  
REPAIRS**

**MOT  
£40**



**TELEPHONE: 01245 400406**

**OPENING HOURS: MON-FRI 8.30AM TO 5.30PM  
SATURDAY 9.00AM TO 1.00PM**

Unit 23, East Hanningfield Industrial Estate, Old Church Road, East Hanningfield, Essex CM3 5BX





## The Credit Munch

The news is full of grim tidings, apocalyptic warnings and there's the promise of a miserable Christmas ahead. We might be worried about where the next mortgage payment is coming from, the entire country is in meltdown and heading towards the financial abyss - at least that's what they tell us.

Who can be really sure what the future holds?  
But **we can** be sure as to who holds the future!

Come and celebrate the Christmas message with us on  
**Sunday 21 December at 6:00pm**

It's a message of hope at a time of uncertainty.

Please also join us at the **Café Bar**, which you can enjoy a delicious 'brunch' at credit munching prices.

**Saturday 13 December at 11:00am to 1:00pm**

As we enter the festive season, can we take this opportunity to wish you all a **very happy, healthy and joyful Christmas from all at Bethel Church.**

Roydon Hearne 400665

# Intercounty

Intercounty would like to wish all our clients who have successfully sold through us this year a very **HAPPY CHRISTMAS** and welcome future clients for 2009. So, if you're positive about buying selling or letting in the New Year and seriously want to get moving, give me a call on

**01245200024**

**Carol Phillips**

Your local Property Professional  
Covering Chelmsford and the villages

[www.intercounty.co.uk/carolphillips](http://www.intercounty.co.uk/carolphillips)



**Galleywood  
£499,995**

Guests staying over this Christmas? Then how about this FIVE/SIX BEDROOM CHALET STYLE DETACHED HOUSE, enormous kitchen, En-suite to Master, Study, 95ft West facing garden, Garage and Parking. Flexible living space with annexe potential for Granny!



**Great Baddow  
£359,999**

Room for all the Family at Christmas! Detached Georgian Style FOUR BEDROOMS (Master en-suite) on generous corner plot, 2 large reception rooms PLUS kitchen/breakfast room, delightful gardens, easily accessible but quiet location just outside town. RECOMMENDED.



**Purleigh £750,000**

Character extended Cottage style house in excellent 2.5 acre gardens and paddock location with long distant views over the Three Rivers Golf Course and towards the River Crouch. Many features include Indoor Swimming Pool, Stables & Menage, Sauna, Beams & cosy Fireplaces; Perfect for Christmas !!!

**Great Baddow  
£299,500**

Semi-Detached FOUR DOUBLE BEDROOM (en-suite to Master) on small quiet development close to A12/A130, walking distance to fields and school, shops etc. Well presented double aspect lounge, separate dining room, south facing garden, garage and parking.



**Chelmsford  
£149,950**

Good things come in small packages! Ground floor TWO BEDROOM FLAT with dressing-room/study, re-fitted Kitchen, Bedroom and Bathroom, own Garden and Parking. View NOW !!!



Buying, Selling or Letting?  
Call Carol Phillips your local Property Professional

**01245200024**

## **PARISH PLAN**

In the last article I explained the background to Parish Plans and how this is a government initiative for rural communities. Unfortunately as with many of these matters there is no central funding! Because of this each group is required to apply for funding from any available sources i.e. government bodies such as DEFRA, County Councils or charities etc. We have been working hard to compile a realistic budget for this project. To facilitate this we asked the Chair of West Hanningfield Parish Planning group to attend a meeting and share with us her experiences. We were extremely grateful for Mary Harmson's time and the insight she gave us to what lies ahead. The most important message was that we were looking to gain grants of approximately £5000. West Hanningfield had the benefit of running their project before the economic downturn and the direction of lottery funding towards the Olympic project.

We are therefore very happy to announce that we have been successful with our first application for funding from the ITV Community Fund. Although this is a small award it will allow us to move forward with the questionnaire and pay off our debts!

Since the last magazine we have held two further events to gather views from people. These have been at the village fete and in the Windmill public house (thank you Mickey!). We have had a good response and it is obvious that people have strong feelings about the village particularly regarding traffic management, road design and future development.

We are now using the information gathered from the surveys to write the questionnaire which will be delivered to ALL households and businesses in the Parish. We are aiming to do this in spring 2009. Although the questionnaire will be anonymous respondents will have an option to enter a prize draw on a

separate sheet delivered with the questionnaire. We are looking for donations as prizes for this! If you can help please contact one of the committee.

Finally I would like to welcome Martin Gard onto the committee to represent local businesses.

May I offer season's greetings to you all from the committee!

Stephen Snewin

[stephen.snewin@imperial.nhs.uk](mailto:stephen.snewin@imperial.nhs.uk)



*Snowman by  
Jessica Pittman*



*Snowman by  
Callum Chalmers*

## EAST HANNINGFIELD PRE-SCHOOL

The children have had a continental introduction to the new school term, learning about a different European country each week before half term. They have made pictures to do with each country, learned to say a few words in each language, & enjoyed tasting a wide variety of foods. Thank you to all the parents who have come in to share their knowledge with the children & make this topic such fun for everybody.

Work has already begun preparing for the Christmas concert, which will be held on Tuesday 9<sup>th</sup> December. The children are practising their songs, & words will soon be sent home for parents to learn too.

The AGM was held in September, with new members being elected on to the committee. Thanks to all those who attended & volunteered for jobs as without the volunteers on the committee, there would be no pre-school.

East Hanningfield Pre-School, registered charity 267508, runs at the Village Hall 09:15 to 11:45 Monday to Thursday during the school term.

Jenny Ash

Angel by  
Ellie White





## **HANNA'S FIELD CHARITY**

The Charity was very fortunate with the weather and is very grateful for the support of the village in running this year's annual fete. The event was organised by Jackie Feehan who took over as chair of the fete committee this year. The Charity and All Saints Church are joint beneficiaries of the fete and a surplus of over £3,550 will be shared between us. This is the biggest surplus made in the history of the fete. Many villagers assisted with this year's fete without whom the event could not have taken place. We must be one of very few villages who are still able to offer pony rides at the village fete notwithstanding the insurance which is now required. The support of several businesses based in the village was crucial in the success of the event. A big thank you to all of you.

By the time you read this the Village Barn Dance will have taken place. The Ceilidh is jointly run by the Parish Council and the Charity and will hopefully have been enjoyed by many villagers.

We are establishing the priorities for the coming year and hope to improve the storage facilities, storage loft access and replace the hall floor surface. Jim Howe is investigating alternative finance sources to enable us to include resurfacing/replacement of the outside sports court in our plans.

The Hanna's Field Charity Committee is always looking for new members to join the committee and assist in the running of the Village Hall and sports facilities. If you would like to find out more

about the Charity please contact me or any member of the committee. The AGM of the Charity will take place on Wednesday 15<sup>th</sup> April 2009 when a new committee will be elected. Villagers are particularly welcome.

We are currently reviewing the Hall, meeting room, sports field and sports court hiring rates and new rates will apply from January 2009.

The hall, field and sports courts/tennis court are available for bookings which can be made via Dawn Mills on 01245 400906. Please make use of the facilities which are available at a discounted rate to villagers.

Colin Warren, Chairman  
401050  
[cwarren132@aol.com](mailto:cwarren132@aol.com)

## **MID ESSEX FENCING & DECKING SERVICES**

- **GATES**
- **FENCING**
- **DECKING**
- **PATIOS**
- **DRIVEWAYS**
- **LANDSCAPING**



**FOR A FREE ESTIMATE CALL PHIL**  
**07779 591248 OR 01245 320318**



# Baddow Plumbing Services



Replacement Boilers  
&  
Bathroom Suites



All Domestic Plumbing Work  
Undertaken

Free Estimates



01245 - 358355

Stephen Bryan

*Snowman & Friends  
by Lucy Swift*



*Christmas Boat  
by Charlie*

# CHRISTMAS COVER COMPETITION RUNNERS UP



Class 1 Runner up  
IAON WILLIAMS



Class 2 Runner up  
LIDIA WILLIAMS



Class 3 Runner up  
ANNA LEWIS



Class 4 Runner up  
EMILY SNELLER