

*EAST
HANNINGFIELD
NEWS*

*Spring 2007
No.119*



**YOUR HELP
needed to win
£160,000 for
your Village Hall**

See page 19 for details.

From the Acting Editor

While waiting for a volunteer to step forward to fill the Editor's role, I have stepped in temporarily to ensure continuity. Until we know who the next Editor will be, please continue to send articles and adverts to me at karen.plumridge@btinternet.com or 2 Clinton Close.

Copydate for the Summer edition is 11th. May.

East Hanningfield News is published by East Hanningfield Parish Council and distributed free to over 500 homes.

Karen Plumridge, Acting Editor 400628

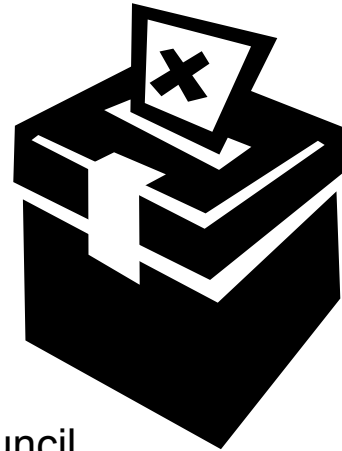


**EDITOR
WANTED
TO PRODUCE
EH NEWS
FOUR TIMES A
YEAR**

**Contact the Acting
Editor for details
400628**

Parish Council

The four year term of the present Council is drawing to an end. You will be able to choose your new Council at the **Election on 3rd. May**. If you would like to stand for a seat on the Council you will need to complete a nomination form and deliver it to the Deputy Returning Officer at Chelmsford Borough Council between **27th. March** and noon on **4th. April**. Forms will be available to download from the CBC website, from the Deputy Returning Officer, and I also have some.



As a postscript to the Scheme of Affordable Housing for Local People you might be interested to know that the Borough Council's Housing Department has provided statistics on the allocations. There were **101** applications received; **73** households applied for rented accommodation, **8** for shared ownership and **20** applied for either. Seven applications were withdrawn for various reasons. Forty nine applications had no local connection, so could not be considered. Fifteen were from households with connections to neighbouring parishes, who might have been considered had there been too few local candidates. That left 30 households to be considered for 12 properties.



This year's **Village Tidy-up** is scheduled for Saturday, **5th. May**. Volunteers are asked to meet at the Village Hall car park at **9am**. Gloves, sacks and litter-pickers will be provided. In recent years we have had perfect weather so it has been a pleasure to have an excuse to be out in the spring sunshine. Why not join us?

The next **Manned Refuse Vehicle** visit to the Village Hall car park will be on **Saturday, 23rd. June** from **8-10.45am**. If you miss it, please don't leave rubbish at the site. The next visit after that will be in October.

PC Meetings continue on the **fourth Thursday** of the month. If you wish to speak to the Council, Public Question Time, which takes place shortly after the beginning of each Meeting, allows you to do so. If you have a question that might require some research please give some notice of it so that the answer can be ready for you on the night. If you have a matter to raise with the Council that will require a Council decision, please put it in writing so that it can appear on the Agenda, preferably a week before the date of the Meeting. Even if you have no questions or nothing to say you will be very welcome to attend the Meetings. Agenda are available on the website and at the Meeting, and can be seen on the noticeboards three days before each Meeting.

The Council's website is growing and is regularly updated, so if you haven't looked at it lately, please pay another visit. 'Hits' and searches are logged, and are being used to modify the information provided so that it meets the search requirements. There is a wide variety of information on there, including some local history. Have you played *I Spy Along the Tye* yet? It is in the publications section. A very important page for local groups is the Village Diary, which lists all the village events that you have told me about.

As you probably know, Tom's lease of the shop came to an end in January, so we welcome Sithik the new manager and Ash our new Post Master and wish them every success.

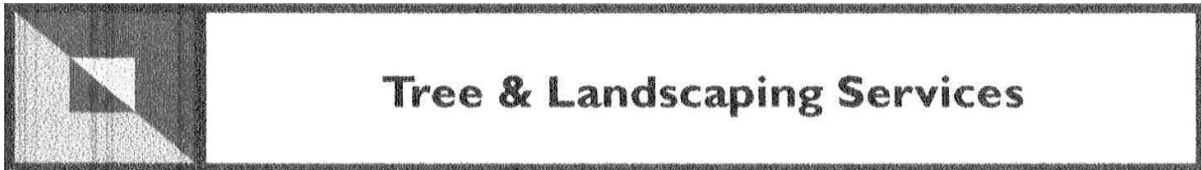
Karen Plumridge, Clerk to the Council 400628
www.essexinfo.net/easthanningfieldparishcouncil

East Hanningfield Womens Institute

Firstly, a belated Happy New Year to you all. We started our year well with our New Year party and a good time was had. A date for your diary, on Wednesday, **11th. April** we will be holding our **Bring and Buy Charity Coffee Morning** in aid of Farleigh Hospital at **10.30am**, so it would be good to see you there. A warm welcome awaits you at our meetings held in our hall on the 3rd. Wednesday of the month at 2pm. Anything you need to ask, just give me a call.



Lilian Crace 400288



Prajk Inc.Ltd.

'Barn Mead'
Old Church Road
East Hanningfield
Essex, CM3 8BH

Phone: 01245 401355
Mobile: 07785 935745
Simon Stratford



All Weather Garden and Property Maintenance

- Lawns / Treework / Hedgecutting
- Planting / Weeding / Spraying
- Clearance / Borders



**Fencing, Ditching and Structural
Garden Services also Supplied**

From Acorns

NPTC Qualified / £5m Public Liability Insurance

Borough Councillor's Message

I have had many people speak to me about my letter to the Essex Chronicle just before Christmas, and I am pleased that it was so well received. I mentioned various groups who play a big part in improving village life. One of our most significant groups is Hanna's Field Charity ably chaired by Colin Warren. On the Charity's behalf Mike Plumridge negotiated the lease for our new Postmaster. I had the privilege of signing the lease on behalf of PC and had some insight into the negotiations. On behalf of the village I would like to thank Mike for the huge amount of patience, diligence and time he applied on our behalf. As our PO is a keystone in community life we all welcome our new Postmaster and wish him success and happiness in this very special village.

I feel a lesser sense of achievement with regard to the telephone mast, having got the provider's representatives to consider an alternative site and set dates to survey it! The contractors erected it where it now stands. I wrote to the surveyors on 31st October in vigorous terms ending "I would be grateful to know why we were misinformed. Was it deceit or incompetence?" Answer came there none. Their urgency in erecting masts does not extend to answering letters.

Finally we need people to form a team to produce a Village Design Statement (see p.16). This really is an opportunity to keep the future of our village in the hands of those of us who live here and not to have unwanted ideas imposed on us. Please get involved whether you live, work, worship or have any other connection with the village. Best wishes to everybody.

Mike Harris

Contrasting a Mid Essex Rural Village with a Small Town in Central Chile.



What is this all about? Well I recently had a great experience of a trip to South America to join up with my son and his wife who were going round the world. I only joined for three weeks but during that time I traveled through the longest thinnest country on the planet. Chile (see left) is about 4000km long (2500 miles) and is only about 100km wide (60 miles). On a European scale it would stretch from Scotland to Nigeria. On our travels south from Santiago the capital we

visited the 'Lake District' and stayed four nights in the small town of Pucon. It is a tourist resort on a lake offering all sorts of adventure activities. Very nice you might think 'a much nicer place to live than East Hanningfield' We do have a nice 'lake' a few miles to the west. But we don't have Pucon's other asset Volcan Villarica, a fuming Volcano which dominates the town. There were only sixteen eruptions in the 20th century. It most recently blew its top in 1984, but there were explosions in 1992 and the crater fell in in 1996. The guide book says it is 'quite safe' and 'considerable warning is given before serious activity'. I noted a series of lights in the high street. Green was normal – 'carry on with your shopping'. Amber indicated some earth quakes and small lava flows. 'I should finish your shopping soon but make sure you get stocked up'! Red indicated major explosions and pyroplastic lava flows, 'so get going with or without your shopping for the peninsular on the edge of town (1/4 mile) where you will be almost surrounded by water, which might help if she blows and comes this way'. So how would living next to a fuming volcano influence our daily lives in East Hanningfield?

While there we climbed up, the young ones made it to the top (2860m), taking four and a half hours. I only made it to 2000m. I claimed old age and lack of practice as we don't have proper mountains in Essex to train on, let alone volcanoes.

After the Pucon we went on south, much of the way by boat through the channels and islands of Patagonia to Puerto Natales from there we went into Argentina to see the huge glacier at El Calafate. We then did three days trekking in the Torres del Paine national park which was spectacular. When my three weeks came to an end I flew back from Punto Arenas and the young ones carried on South for ten days in Antartica and that is very different from East Hanningfield. If you want to see some of the photos check their blog emanddave.blog.ac

Tony Lees

CARPETS & VINYL

◆ FREE QUOTATIONS

◆ LOCAL MAN –
OVER 25 YEARS IN
THE BUSINESS



◆ VIEW SAMPLES IN
YOUR OWN HOME

◆ SUPPLY AND FITTING

CONTACT
NEIL POULSON

PHONE 01245 221316

MOBILE 07808 123676

Email: neil.poulson@ukonline.co.uk

Friends of St. Giles (FROGS)

FROGS is a group of local people who fund raise and organise social events for the residents of St Giles, a supported housing project for adults with a variety of special needs. It is set in 22 acres of grounds in Moor Hall Lane, East Hanningfield. All the money raised by the FROGS goes into the St Giles Residents' Fund and is managed by the residents with FROGS' support.

If you are enthusiastic, have some spare time and would like to be involved in a community project that is of great benefit to all involved, please get in touch. We welcome newcomers and would love to have your involvement. You do not have to be involved in the committee, but can simply join in those activities which most interest you. We look forward to hearing from you!

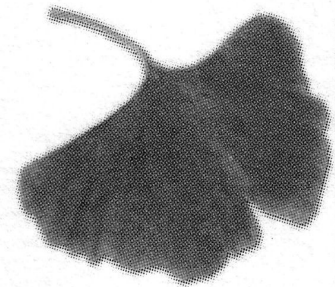
Ursula Deith, Supported Housing Manager 222193
Joan Bridger, Chair of FROGS 473079

PHILIP PROBERT
FENCING AND
DECKING SERVICES
COMPETITIVE AND FRIENDLY
NO JOB TOO SMALL

11 Manor Road
South Woodham Ferrers
Chelmsford, Essex
cm3 5pw

01245320318
07779591248

Call For Free Quotation



All Saints' Church

Religion, some say, is the cause of much of the trouble in the world today. We at All Saints' church could produce evidence from our experience as a church to counter that allegation.

William Wilberforce, 200 years ago was the prime motivator in getting slavery abolished. We commemorate this event this month. What moved him to change things? His Christian faith. During Lent this year, our combined parishes of East Hanningfield and Sandon will be following a course, entitled, 'Can we build a better World?', on Wednesday evenings, 7-30-9, in the St. Andrew's Room at Sandon, based on Wilberforce's work, and learning about what moved him, how we can learn to pray as he did and how we too can change things for the better in our world. Join in if you can.



In the summer we shall again be supporting the work of the Chernobyl Children's Project. No one can pretend that the nuclear disaster of 1986 was the fault of religion! Yet there are many from the churches around here who are prepared to house two children for a fortnight in July so they can have a recuperative holiday and recover somewhat from the dreadful effects of radiation. It's not too late to offer your help, if you wish. Ask Keith for details.

All Saints' Church recently held a Christingle Service, attended by a good congregation. It raised a considerable sum for the Children's Society and was a splendid occasion.

In these and so many other ways, our parish church is seeking to make a difference to some of the sadder aspects of today's world. Certainly in our parish the church and 'religion' is far from being a cause of trouble, but in trying to be constructive and helpful. Let this village continue to show that the church can be and ought to be a force for good.

Keith R. Plaister (Priest in charge) 472262

East Hanningfield C.E. Primary School



Thank you for voting for our school in the Essex Chronicle "Cash for Schools" feature. We were awarded third prize of £200 in our group towards a replacement swimming pool. It is being replaced this term ready for Summer Term swimming.

Our Christmas Bazaar raised £786 towards the pool. Thank you for joining us on the Friday evening.

Thank you for Tesco Sport vouchers last term, The School Council ordered new netball bibs, a few playground balls and spots, but chose to "bank" most of these in order to buy a more exciting, special pack next year. We are now collecting Sainsbury Active vouchers.

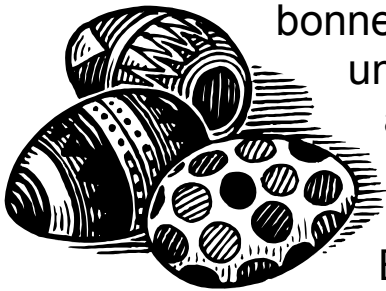
From Hanna's Field you can see our extension taking shape. The class currently in the old relocatable building are looking forward to occupying one of the new classrooms and seeing their old one removed. The other new classroom and library link will enable us to remodel space in the existing building, as part of Our Future School Project, as soon as funds allow.

Linda Findlay

East Hanningfield Pre-School

Since returning after the Christmas break, the children have been learning about growing things, life-cycles & growing up. They had a special visit from a baby in the village, & brought in photographs of themselves as babies for comparison.

Our stall at the school Christmas Fete raised £60 for the pre-school, & we are planning another fund-raising event at Easter, with the help of Hanna's Tots. We hope to have an Easter bonnet competition on Good Friday for children under 7, with Easter eggs as prizes. This is in addition to the ongoing activities to raise money, such as the second hand clothes stall on Wednesday morning & the Bonus Ball competition.



East Hanningfield Pre-School, registered charity 267508, runs at the Village Hall 09:15 to 11:45 Monday to Thursday during the school term.

Jenny Ash, Secretary 400090

Hanna's Tots

Hanna's Tots has been very well attended this year, with new arrivals to the village joining us on a Friday morning. As more of the older children started school in January, the younger ones have been able to take advantage of the space, & to try out some of the toys that they always wanted to play with but never actually managed to. Perhaps unsurprisingly, the overall noise level remains much the same!



If you would like to come along to a session, Hanna's Tots runs at the Village Hall every **Friday** morning, from **09:30 to 11:30**, for children under 5 & their parents/carers.

We have a vast array of toys to play with in the Hall, in addition to those available on loan in our toy library. Other equipment is also available for hire, including a high chair, a travel cot (ideal for grandparents expecting visitors) and a small bouncy castle.



Jenny Ash 400090



PRE-SCHOOL DEPUTY SUPERVISOR REQUIRED

East Hanningfield Pre-School require a deputy supervisor, working with children from 2 1/2 years to school age.

Part time, four mornings a week.

DPP level 3 or above required.

Contact Pam Pearson on 400510 for further details.

Registered charity 267508

London Bridges Walk 2007 - Sunday, 24th. June

Call 08456 12 12 26 or email events@kidneyresearchuk.org for more information or to enter the event.

Bethel Church

Our new church building in Old Church Road is one year old in April! We were given the 'go-ahead' by the building inspector to start using the building in mid-March 2006 and had our official opening and dedication service on 1st April. We are now thoroughly settled-in and enjoying the lovely facilities of our new home. The very last item in this building project, the surfacing of the car park, is being carried out as I write and should be finished before this magazine is issued.

It's been a long but exciting journey for the church. The vision for a new building came some 10 years ago and a building fund was started and plans drawn up. After planning permission had been obtained, the 65 year old church building was demolished in May 2002 and work started on the new church in July of that year. We have been thrilled as a fellowship to see the funds come in, as we have needed them, to complete stages in the building. We have known the blessing of God in this, and our thanks go firstly to Him for his faithfulness and also to all those, including many from the village, who have supported us in prayer or financially.

All our regular, weekly meetings and activities now take place in the new building: Sunday morning Praise and Worship followed by Sunday School for the children; Ladies Fellowship meeting and Prayer Groups on Tuesdays; Bible Study on Thursday evenings. Please come along and find out more. You will be very welcome. Our new venture is the Coffee Morning on the last Tuesday of every month. These are very informal; just drop in for coffee, cake and a chat. All proceeds go toward the upkeep of a children's orphanage in Burma.



Easter is in early April this year. We shall be holding a special communion service on Good Friday morning and a celebration Family Service on Easter Sunday. Join us if you can. Easter is that special time when we remember and give thanks for the death and resurrection of Jesus, the Son of God who loves us and has promised new, full and eternal life to all who will trust and follow him. That's really something to celebrate!

Good Friday Service	6 April, 10am
Easter Sunday Family Service	8 April, 10:45am
Tuesday Coffee Mornings,	27 Mar & 24 Apr 10–12 noon

David Cottey tel. 400665

Community Speed Watch.

Community speed watch is a traffic monitoring scheme that is coordinated by the police but managed and run by volunteers in the community.

It is working successfully in several Essex villages. Its aim is to address the problem of real or perceived speeding. This is done in partnership with the community in order to reduce the number of injuries and to increase safety for all road users, including pedestrians and cyclists.

PC has agreed to proceed with the programme in East Hanningtonfield and we are now seeking volunteers to attend a training session in the village before we launch the programme. After the 3 hours of training, volunteers would be expected to be available for about one hour per week. We hope to do the training in March and be up and running a few weeks after that.

If you would like to add your name to the list, or would like more information, please contact **Tony Lees on 400338**

What's all this about a Village Plan?

A Village or Parish Plan is a community led project to find out what local people like and don't like about their community, what improvements they would like and what services and facilities they need now and will need in the future. The process has been developed over many years, so there is a vast knowledge available to tap into for guidance as to how to go about it. In Essex *community development workers* at the Rural Community Council of Essex provide that expertise.

The process involves communicating with everyone in the community, so that all voices are heard, the aim being total inclusion. This is done using a variety of consultation methods, including workshops, mapping and so on. It is this thorough consultation process which gives the final document, the Village Plan, its credibility where external authorities are concerned. They can no longer say they know what is best for us if the Village Plan contradicts them. The finished Village Plan will list the needs and aspirations of the community, and also say how it is proposed that they should be achieved.

A **Village Design Statement** can be an element of a Village Plan or a completely separate project. It is solely concerned with Planning issues, and if carried out with the guidance of the local planning authority can be adopted into the Local Development Framework and thereby influence planning decisions. Our local planning authority is Chelmsford Borough Council and is encouraging all the local parishes to develop Design Statements.

If you think you would like to get involved in either of these projects, please register your interest with me. When enough volunteers have come forward, a meeting will be arranged with

a *community development worker* to find out the details of the process and how to get it started. In the meantime, there is more information on the website under **Community-Led Planning**.

Karen Plumridge, Clerk to the Council 400628
www.essexinfo.net/easthanningfieldparishcouncil

Find Your Road!

P	S	C	L	I	N	T	O	N	O	M	M	O	C
A	K	A	E	Y	E	R	F	F	E	G	R	H	O
Y	C	T	C	N	R	K	A	S	Y	S	I	C	L
N	A	H	E	H	E	E	T	B	S	S	S	R	L
E	B	E	O	E	E	T	T	N	D	D	A	U	S
S	K	R	O	W	E	L	I	T	L	L	A	H	O
E	Y	I	I	N	A	C	M	E	E	B	O	C	U
L	L	N	N	D	H	S	I	S	I	N	R	D	T
R	I	E	A	O	O	F	H	T	F	O	D	L	H
A	B	D	L	P	H	N	C	L	Y	O	N	O	E
C	R	S	E	G	D	E	H	P	E	E	R	C	N
S	O	F	I	L	L	I	O	L	B	Y	P	D	D
N	E	H	P	E	A	S	E	E	B	N	S	C	H
I	R	N	L	B	I	C	K	N	A	C	R	E	I

The names of 25 parish roads, closes and lanes are hidden in the word search above. See how many you can find. Answers will be in the next News, but if you can't wait that long you can find them on the EHPC website.

HANNINGFIELD MOTOR CO



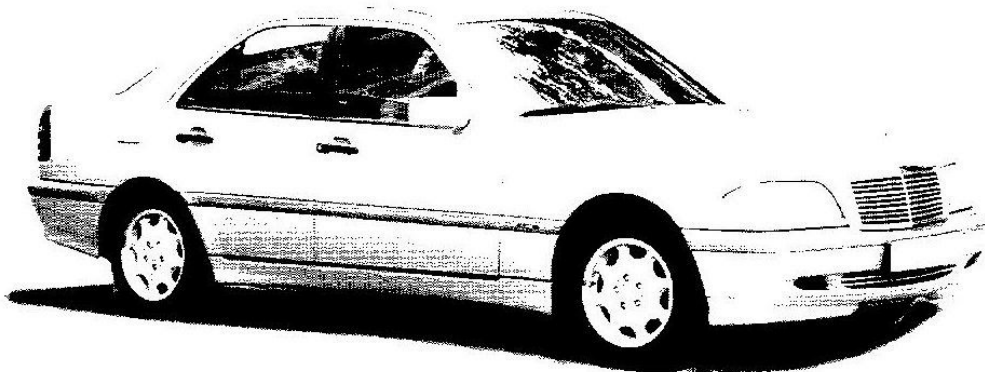
MOT CENTRE

UNDER NEW MANAGEMENT SINCE JUNE 04

**SERVICING
DIAGNOSTICS
REPAIRS**

**FULL SERVICE ON
MOST 4 CYLINDER CARS
ONLY £99 INCL.
PARTS**

AIR-CON SPECIALISTS

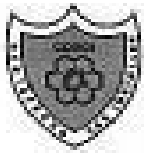


TELEPHONE: 01245 400406

**OPENING HOURS: MON-FRI 8.30AM TO 5.30PM
SATURDAY 9.00AM TO 1.00PM**

Unit 23, East Hanningfield Industrial Estate, Old Church Road, East Hanningfield, Essex CM3 5BX

Baddow Plumbing Services



**Replacement Boilers
&
Bathroom Suites**



**All Domestic Plumbing Work
Undertaken**

Free Estimates



01245 - 358355

Stephen Bryan

It's not much to ask for £160,000!

We (Hanna's Field Charity and EHPC) have a one off opportunity to apply for 100% funding to improve facilities at the Village Hall for the benefit of the community. 100% means that it would not have to be supported by local fund raising or an increase in council tax.

The Lottery Fund is looking to give money to community building improvement projects that will enhance community cohesion and inclusiveness, while reducing exclusion and deprivation.

The creation of a **Community Suite** at the Village Hall will provide a real focus for the village. It will enhance the facilities and allow a wider range of activities by providing a large comfortable room with carpets, tables & chairs, small kitchen and bar facilities for clubs, social gatherings, sporting events, community nights, & private parties and probably remove all need for revenue fund raising towards Hall running costs. This is definitely a win - win situation, achievable through this lottery funding.

BUT, we have to prove that there is a need in our community for the proposal and that it's what the community wants - this is where we need your help! We know most residents are backing this project from positive feedback to the plans displayed at the September Fete, but we need to prove this unequivocally in our bid, so please demonstrate your support using the voting slip below. If you need more slips for your family we can supply them or a simple note will do! This is a great opportunity please don't let us miss out.

✂-----

East Hanningfield Village Hall Enhancement

(Hanna's Field Charity & East Hanningfield Parish Council)

I/we support the proposal to create a community suite in the Village Hall.

Signed

Print

Postcode

Please deliver to 2 Clinton Close or the Shop/PO by 10th. March.