



FROM THE EDITOR

First of all I would like to thank all of you who send in the articles for the newsletter. This is a newsletter to keep you, the villagers informed of what clubs and groups there are and events happening in the village.

COPY DATE FOR NEXT ISSUE IS FRIDAY 11th AUGUST 2006.

Anyone with an article or advertisement must let me have copy by this date at the **LATEST.**

EAST HANNINGFIELD NEWS is published by East Hanningfield Parish Council and distributed free to over 500 homes.

Daphne Sherry (Editor) 401208
Brooklands, The Common, East Hanningfield.
Email: daphne_sherry@hotmail.com

Baddow Plumbing Services



**Replacement Boilers
&
Bathroom Suites**



**All Domestic Plumbing Work
Undertaken**

Free Estimates



01245 - 358355

Stephen Bryan

PARISH COUNCIL

In the last News I announced that Chelmsford Borough Council would be bringing mobile skate equipment to the Village Hall car park on 14th May. Unfortunately, the equipment was vandalized at the place where it is stored, so our date was postponed. We are currently awaiting news of the rescheduled visit. Posters will publicise the event on the notice boards and it will be included in the Village Diary on the PC website once the date has been confirmed.

There is still time to apply for the affordable housing being built in Old Church Road. If you are interested in the shared ownership properties the cut off date is 31st. July, but you have until 30th. November to apply for the rented housing. You can find the application form on the PC website, or ask me for one. There is to be an open house on a Saturday in August, so that you can see one of the houses on the inside. The date will be posted on the noticeboards and website. Some of the Parish Councillors have already had a chance to view the houses under construction and were impressed by their quality.

Thank you to everyone who participated in the Village Tidy-up on Saturday 6th May: it really made a difference. The manned refuse vehicle will be stationed at the Village Hall car park on Saturday, 24th June from 8am-10.45am. The next visit after that will be on 7th October.

Following the last Parish Council election PC adopted a standing order that no Chairman could hold office for more than four consecutive years. After three years in office Les Draper has decided to stand down to give another councillor the opportunity to learn from the experience of chairmanship before the election next year. At the time of writing Les had to officiate at two more meetings, the Electors' meeting on 20th. May and the Annual Parish Council Meeting on 25th May.

In mid May every household in the parish should have received a transport questionnaire. PC is aware that public transport available to local people is deficient. Grant funding is available to help parish councils solve local transport problems, but hard proof is needed to justify a grant application, hence the survey. The questionnaires are to be collated by the Essex Transport Partnership. Initial results will be available at the consultation exhibition at the Village Hall on Saturday 3rd. June. Please come along and give your views on the local transport options. The event will be open from 9.30am until noon so you can pop in when you visit the shop. Spare questionnaires will be available in case anyone was missed when they were delivered. PC obtained a £1000 grant to cover the cost of the transport consultation.

PC Meetings continue on the fourth Thursday of each month, in the first floor meeting room at the Village Hall, beginning at 8pm, unless there is a visiting speaker when we start half an hour earlier. The start time is posted on the noticeboards three days before the Meeting. Please enter through the side entrance as the connecting door inside the Village Hall is usually kept locked.

Karen Plumridge,
Clerk to the Council 400628
PC Website: www.essexinfo.net/easthanningfieldparishcouncil

EAST HANNINGFIELD W.I.

Just in case anyone who came to our recent Charity Coffee Morning has not heard the result, we were delighted to raise £219-40 for the Essex Air Ambulance. On Wednesday June 14th we are having Strawberry Tea at 2p.m. Tickets are £4, please ring me if you are interested.

As always our meetings are in our hall in Old Church Road on the 3rd Wednesday of the month at 2p.m.

Lilian Crace (400288)

hm

HALL MAHR

CARDS • CANDLES • FLOWERS

**We are a small, local partnership
offering a friendly personal service.**

**Yankee candles, Phoenix cards
and flowers for all occasions.
Candle holders & accessories.
Personalised hand painted greeting cards.**

**For a one to one consultation or to
book a hm party, please call
Trudy or Nicky on
01245 401448 / 400767**

BOROUGH COUNCIL NOTES

As the new Borough Councillor, I hope to have the opportunity to pen a few words from time to time in the Parish Magazine. I was delighted to have been elected with such a big majority & thank sincerely all those people who voted for me. However whether you voted for me or not I am pleased to hear & react to the concerns of every resident whatever your politics, ethnicity, gender, sexual orientation or religion. I want to seek ways to resolve situations wherever I can. I recognize too that we cannot all be pleased by an outcome, but by compromise & good neighbourliness we can be content. One of my election aims was to create a club in East Hanningfield which could provide revenue so desperately needed to sustain our Village Hall & provide a real Community focus, most especially for people 16ish to 25ish. So far many problems have arisen in achieving this objective, but I still believe that with positive lateral thinking we can overcome!

I believe O2 are proposing a mobile phone mast for the industrial estate. Their proposals do not include detailed plans or images so I have asked Planning Control to obtain these. My take on masts is that sitting is always the best of evils, reception in some parts of the village is bad, particularly around Ashley Green & the site is least likely to cause problems to domestic residents. So far as health is concerned the Office of the Deputy Prime Minister has directed that no opposition to masts on health grounds is permissible so any objections on health grounds are dismissed. Most of you know that I live at Windmill Cottage Back Lane. Telephone me on 01245400142 email me on michael.harris@chelmsfordbc.gov.uk. I don't hold a surgery, but would be happy to if the need was apparent, however I am always prepared to visit & am available at any time, not just for problems but for good ideas too. Let's improve our neighbourhood together!

Sincerely, Mike Harris

THANK YOU VERY MUCH

A big thank you to everyone who has supported & generously sponsored me for the London Marathon. I really could not have done it without you & still quite can't believe I did. I'm still collating monies, but it looks like about £4,500! The first £2000 will go to Farleigh Hospice with the balance being shared between Hanna's Field Charity, School, Church, Pre-school & other groups within the village. It was a fantastic day & I would recommend it to everyone, as a runner or a spectator.

They started me off in pen 9 (back of the pack), I managed to get across the starting line 20 minutes after the gun went off. The first few miles I was smiling, no rain & loads of 'high fives' with all the little children, there were rhinos, camels, Wombles, a golfer pulling his trolley, a man doing it backwards with special wing mirrors on his hat & too many fantastic characters to mention. Things got a bit scary around Deptford as the pubs opened there at 8am & we were getting there about 11am & lets just say those spectators were really getting into the spirit of things. Got to mile 14, topped up the Vaseline & took a couple of painkillers waving at all the elite runners coming out of Docklands (they are about mile 22). Mile 19 had to put on my MP3 player, needed a bit of Madonna motivation. About 21, very gratefully received orange segments from Asda. By the time I got to 22, I had completely run out of steam – the 'wall' I think, so started popping glucose tablets & chocolate buttons which gave little bursts of energy. Got to mile 24 & there was the lovely belly dancing ladies, so performed a very soggy veil dance & watched the 20 man millipede pass me by!

Just that last mile then, felt like 10, managed to sprint last 200 metres & cross line with a smile on my face at 5:51:56. Still running, training for next year! ONCE AGAIN THANK YOU

Clare Liddiard

CARPETS & VINYL

- ◆ FREE QUOTATIONS
- ◆ LOCAL MAN – OVER 25 YEARS IN THE BUSINESS
- ◆ VIEW SAMPLES IN YOUR OWN HOME
- ◆ SUPPLY AND FITTING



CONTACT
NEIL POULSON

PHONE 01245 221316 MOBILE 07808 123676
Email: neil.poulson@ukonline.co.uk

EAST HANNINGFIELD C. E. PRIMARY SCHOOL

If you or your child attended the village school, you will remember the friendly face that greeted you at the office & tended hurt or upset children. Pat Harvey has been the school secretary for over thirty years. In that time the job of school secretary has grown to incorporate many administration & financial duties that used to be centrally managed. The computer & photocopier have taken the place of typewriter, carbon paper & spirit duplicator. Pat has risen to each challenge, learning new skills as necessary, mastering computer programmes & supporting new head-teachers with patience & good humour. She is to retire this summer & will be missed. Perhaps we'll entice her back as a volunteer helper - her initial role in the school!

Thank you for your support: March Textile Collection raised £101.80 & John Court's half marathon raised £255. Meanwhile the extension plans have been agreed by the Local Authority & now await County planning permission. **SCHOOL SUMMER FETE FRIDAY 23RD JUNE** 5pm to 8pm We hope you can join us on what we hope will be a beautiful summer evening.

Linda J. Findlay

BETHEL EVANGELICAL CHURCH

We have just started out on a new & significant stage in the life of our fellowship. Our new church building in Old Church Road has been completed & we have been meeting there for several weeks.

We had our official opening & dedication service on Saturday 1st April. It was good to see the church filled, with many visitors who had joined the service for the day. Representatives from several local churches took part in the service & the closing address was brought by Rev. Steven Carter, who some of you will know as Pastor here in the 1980's. It was a great day of celebration & thanksgiving. It had been 10 years since the vision for a new church building had emerged from a time of prayer. It had been 4 years since the old Bethel Church had been demolished to make way for the new. The new building is a testimony to the goodness & faithfulness of God & to the faithfulness & generosity of many people, not just the members of the church here, but friends & supporters from outside the fellowship. We want to say thank you to all of you.

Now that the new church is open, please feel free to come & look around. Better still, come & join us for a Sunday service or mid-week meeting. You will be very welcome. We still have Rainbow Club for children in the Village Hall: 6pm Friday, but all other meetings are held in the new building.

Sunday Praise & Worship & Sunday School	Sunday 10:45am
Ladies Fellowship Meeting	Tuesday 10:30am
Prayer Groups	Tuesday 2pm & 7:30pm
Bible Study Meeting	Thursday 7:30pm

Pastor David Cottey tel. 400665

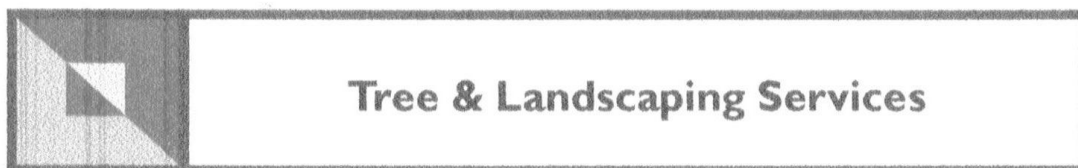
EAST HANNINGFIELD PRE-SCHOOL

The Easter Egg Hunt organised by the pre-school committee went very well, raising £26. It was a fun afternoon for all & a big THANK YOU to Tom for his kind donation of the Easter Egg prize. Thanks to all those who helped out.

The term topics are as follows: everyday & unusual shapes. Congratulations to Clare Liddiard who completed the London Marathon in 5:41. Clare is kindly giving a generous donation to the pre-school.

The fashion show is coming up on 8th June, held in the Village Hall 7:15 for a 7:30 start. Tickets are £3, including a drink & these can be purchased from the pre-school committee members on the door. There will be a fantastic range of discounted fashion so come along for a great night, all welcome! Anyone interested in the pre-school committee? If so you are welcome to come along to our meetings & see for yourself what goes on & how your child's re-school is run.

Bonnie Harris – secretary



Prajk Inc.Ltd.

'Barn Mead'
Old Church Road
East Hanningfield
Essex, CM3 8BH

Phone: 01245 401355
Mobile: 07785 935745
Simon Stratford



All Weather Garden and Property Maintenance

- Lawns / Treework / Hedgecutting
- Planting / Weeding / Spraying
- Clearance / Borders

**Fencing, Ditching and Structural
Garden Services also Supplied**



From Acorns

NPTC Qualified / £5m Public Liability Insurance

HANNINGFIELD MOTOR CO



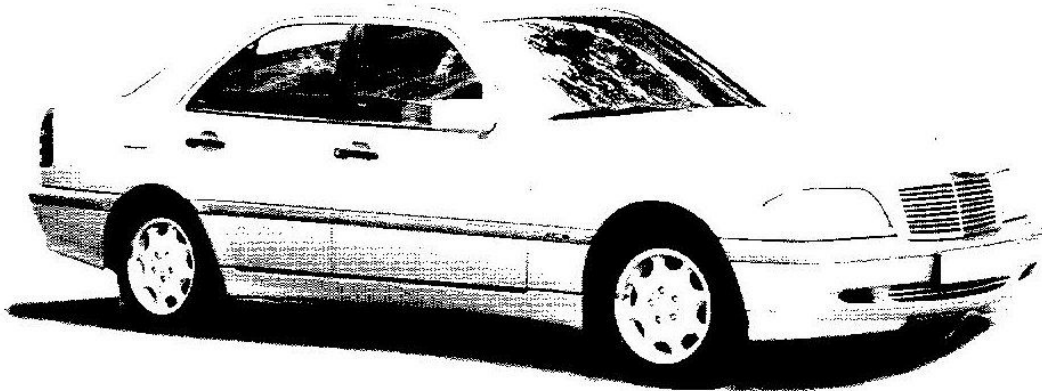
MOT CENTRE

UNDER NEW MANAGEMENT SINCE JUNE 04

**SERVICING
DIAGNOSTICS
REPAIRS**

**FULL SERVICE ON
MOST 4 CYLINDER CARS
ONLY £99 INCL.
PARTS**

AIR-CON SPECIALISTS



TELEPHONE: 01245 400406

OPENING HOURS: MON-FRI 8.30AM TO 5.30PM

SATURDAY 9.00AM TO 1.00PM

Unit 20, East Hanningfield Industrial Estate, Old Church Rd, East Hanningfield, Essex CM3 5BX

HANNA'S FIELD CHARITY

Charity AGM

The Charity's AGM was held on Wednesday 26 April. A report for 2005 was provided by the Chairman, Colin Warren and the Treasurer, Mike Plumridge, provided a summary of the Charity's financial position and confirmed the year 2005 accounts had been checked by an independent examiner. Thanks to Martin Harcourt-Williams. Sylvia Hopkins provided a report for the Fund Raising Sub-Committee.

The Chairman's report is provided on the Charity's part of the Parish Council webs site, click on the internet web address www.essexinfo.net/easthanningfieldparishcouncil/village-hall to see this. A number of significant achievements were reported including the upgrade of the Play Area facilities with the particular help of Hanningfield Wives and their calendar, installation of the sports multi wall on the field, adoption of Policies for Equal Opportunities and Child Protection, redecoration of much of the Village Hall (thanks to various parties and Paul Garner in the village)

There were several changes in Trustees and the new trustees for 2006/2007 are:

Hall Club/Society etc (Reps)	Elected (Not representative)
Dave Emerton - Football Club	Colin Warren - Chairman
Tony Orpin - Bowls club	Jenny Mouser - Vice Chairman
Edward Poulter - Badminton & NHW	Wendy Thomas - Secretary
Clare Liddiard - Hannas Tots	Mike Plumridge - Treasurer
Dawn Falkingham - PreSchool	Sylvia Hopkins - Fund Raising
Peter Applegate - Parish Council	Paul O'Meara, Paul Garner & Anne Walden

We said goodbye to Rose Pollard and Celia McEwen. If you are interested in knowing more about the Charity contact Colin Warren on 401050 or me on 400628.

Youth Equipment Project

The Charity have been fundraising and applying to various organizations, including our Parish Council, for grants to improve to the youth facilities on the playing fields. We have been successful in raising a little over £20,000 to date. We have one more grant we need villagers help with – the Charity has entered our youth project into the Essex Chronicle’s “Hearts of the Community” competition and we stand to gain £4,000 for the project if everybody in the village sends in their vote for our project. Look out for the article in the Essex Chronicle in the next week or so. Before finalizing plans will be seeking the views and ideas of youngsters in the village so look out for posters. The intention is to put equipment in for the summer holidays.

Fund Raising

The Charity’s annual Art Exhibition will be in the Village Hall on Saturday 15th July from 10.00am to 6p.m. This is always a popular event and the proceeds will go towards our youth equipment project. This is a really nice occasion – lots of very good art in a variety of styles and at very reasonable prices. If you are an artist wanting to exhibit phone us on 400797. On Saturday 16th September we will, with All Saints Church, be organizing the annual Village Fete on the Hall Playing Fields. Later in the year we hope to be involved with the Parish Council in organising a Halloween Dance in the Village Hall so look out for the details.

Internet Home Workers

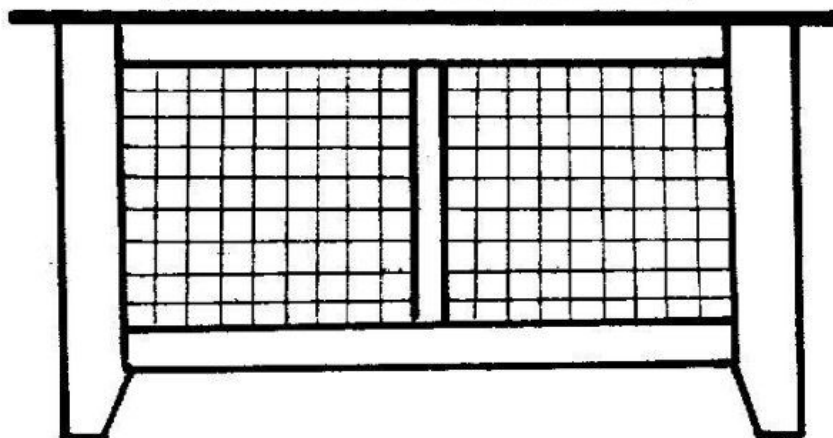
People are increasingly working from home but this can be a strain in some circumstances. Some people find they need to find a place where they can work with out interruption but which is comfortable and provides basic facilities, internet access, use of

mobile phone and a place to make a coffee etc. We have had one enquiry from a villager about the hire of the Hall's meeting room for this purpose. The meeting room is little used during daytime hours but doesn't have internet access however it might be worthwhile putting in if there was enough interest. If you might be interested contact me on 401050.

Colin Warren
Chairman
Hanna's Field Charity
Tel: 01245 401050
Email: cwarren132@aol.com

THE RADIATOR COVER COMPANY

**MODERN & TRADITIONAL
DESIGNS,
MADE TO MEASURE,
FULLY FITTED,
SPRAY FINISHES.**



FOR MORE INFORMATION CALL

01245 400490

01621893215

WHO WAS JOHN GEFFRY?

In 1381 Parliament levied the third poll tax in three years in order to fund the war with France. At 12d. a head it was very harsh. Small groups of local people were ordered to draw up lists of all local inhabitants who should pay and to collect the money. The returns were so low that connivance was suspected and so commissions were set up to investigate. Violence erupted at Brentwood on 30th. May and thus began the Great Revolt. Much of the activity of the 'revolutionaries' was directed at destroying records which could be used for taxation purposes. Our man, John Geffry bailiff of East Hanningfield led a band from the three Hanningfields in an attack on the estate of the King's Treasurer, Sir Robert Hales, at Cressing Temple. The Essex, Hertfordshire and Kent rebels met the King at Mile End on 14th. June and he made them promises which although he didn't keep, are still seen as historically significant, but most important was the abolition of serfdom. The pardon promised by King Richard was one of the promises not kept. For a few days, 1st-6th July, Chelmsford became the seat of government, and during that time were executed, among others, John Geffry and the East Hanningfield miller, John Filliol (or Filliol). As John Filliol is already commemorated in a street name it seemed appropriate for John Geffry to be given the same recognition.

More information on the Great Revolt of 1381 in and around Chelmsford can be found in *The Sleepers and the Shadows* by Hilda Grieve.

Karen Plumridge
Clerk to the Council
tel. 400628



**Village Hall,
Saturday, 15th July,
10am-6pm**

ANNUAL ART EXHIBITION & SALE

**In aid of Hanna's
Field Charity**



**Artists wishing to exhibit please phone 400797
Charity No. 286877**