

Monthly and annual rainfall totals from September 1968 to December 2019

at Nan King's Farm, Chipping, Preston, Lancs. Met Office Rain Gauge Station 574005, OS Map ref SD614442

Measurements in millimetres. Averages are rounded to nearest tenth of millimetre.

Statistics based on daily readings taken from 9am GMT (10am BST). Daily figures available on request

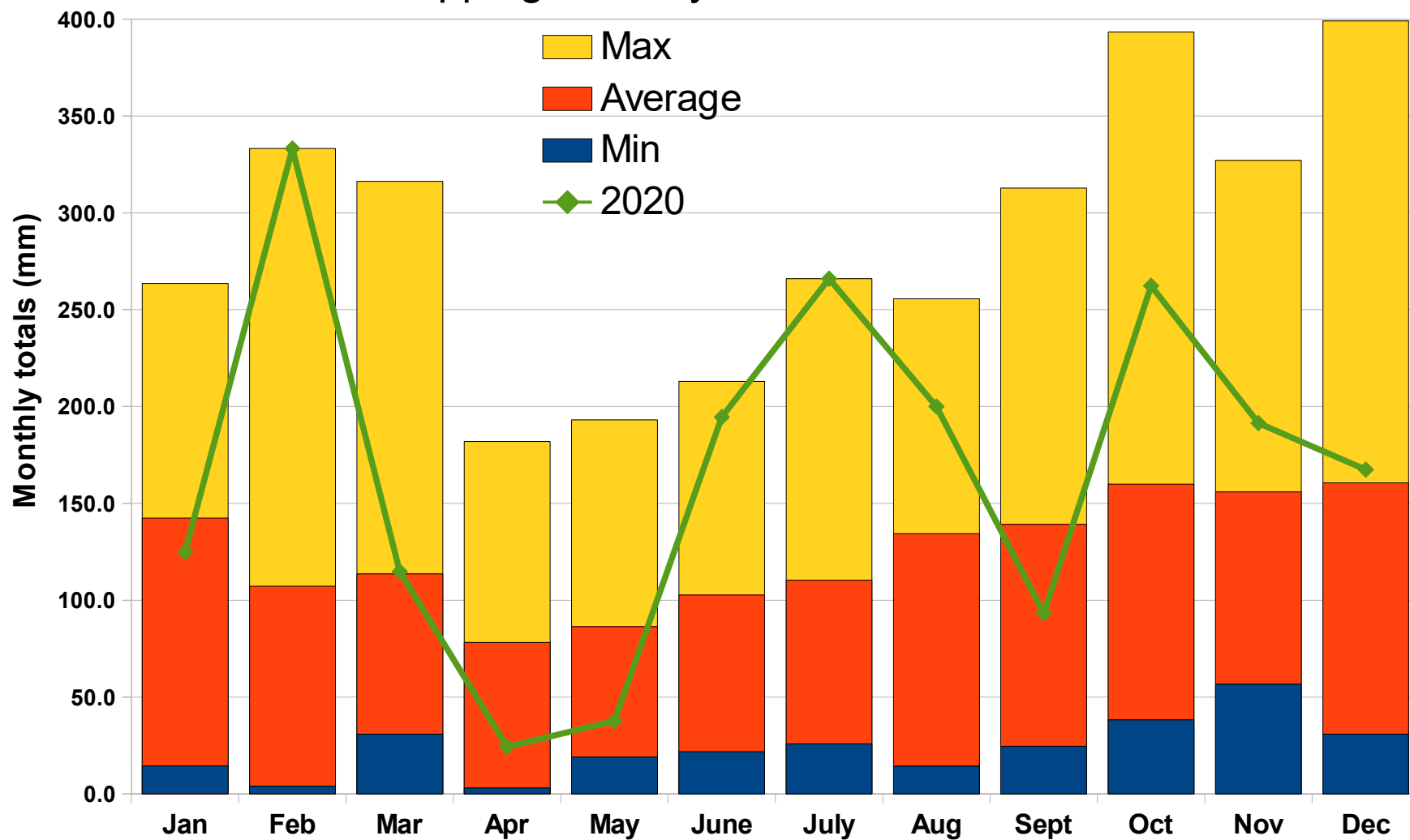
| Year | Jan | Feb | Mar | Apr | May | June | July | Aug | Sept | Oct | Nov | Dec | Total |
|------|-------------|------------|--------------|--------------|-------------|-------------|-------------|-------------|-------------|--------------|-------------|-------------|---------------|
| 1968 | | | | | | | | | 251.0 | 229.4 | 74.5 | 30.9 | |
| 1969 | 125.2 | 71.8 | 106.6 | 93.7 | 101.1 | 135.5 | 44.5 | 70.7 | 78.1 | 56.0 | 196.8 | 124.9 | 1204.9 |
| 1970 | 114.9 | 113.4 | 83.4 | 181.9 | 22.5 | 65.8 | 126.2 | 103.0 | 149.7 | 217.5 | 226.0 | 65.1 | 1469.4 |
| 1971 | 79.7 | 102.6 | 91.7 | 52.3 | 78.4 | 82.5 | 75.9 | 166.9 | 76.5 | 125.7 | 120.2 | 36.9 | 1089.3 |
| 1972 | 118.7 | 56.0 | 102.0 | 120.6 | 99.7 | 155.0 | 93.8 | 45.7 | 56.6 | 48.2 | 235.3 | 124.1 | 1255.7 |
| 1973 | 127.6 | 96.2 | 74.3 | 98.8 | 93.0 | 57.9 | 114.8 | 155.5 | 107.8 | 97.5 | 140.1 | 163.5 | 1327.0 |
| 1974 | 142.1 | 113.7 | 59.6 | 4.8 | 59.2 | 92.6 | 191.7 | 113.0 | 232.1 | 128.4 | 150.0 | 164.4 | 1451.6 |
| 1975 | 212.9 | 51.7 | 51.3 | 112.9 | 19.0 | 27.6 | 143.3 | 100.2 | 211.6 | 62.0 | 125.4 | 103.5 | 1221.4 |
| 1976 | 204.4 | 64.9 | 90.9 | 48.5 | 123.3 | 41.1 | 76.5 | 14.3 | 147.7 | 153.2 | 128.9 | 67.9 | 1161.6 |
| 1977 | 92.6 | 149.2 | 101.4 | 161.5 | 43.0 | 138.8 | 72.5 | 78.7 | 105.6 | 132.7 | 180.8 | 123.4 | 1380.2 |
| 1978 | 150.5 | 80.6 | 157.3 | 36.5 | 28.0 | 114.1 | 113.9 | 127.4 | 220.0 | 65.1 | 165.4 | 125.3 | 1384.1 |
| 1979 | 100.8 | 33.6 | 164.8 | 95.7 | 161.4 | 57.2 | 70.2 | 175.9 | 139.5 | 105.5 | 182.4 | 250.6 | 1537.6 |
| 1980 | 157.0 | 151.3 | 119.7 | 3.1 | 25.9 | 188.8 | 80.6 | 183.7 | 144.0 | 374.0 | 225.8 | 208.9 | 1862.8 |
| 1981 | 204.4 | 72.4 | 316.3 | 46.9 | 99.5 | 103.4 | 101.6 | 107.5 | 197.9 | 246.5 | 190.1 | 97.6 | 1784.1 |
| 1982 | 155.5 | 69.0 | 137.9 | 31.8 | 66.2 | 173.8 | 25.8 | 189.5 | 90.0 | 115.9 | 192.4 | 196.3 | 1444.1 |
| 1983 | 182.8 | 42.3 | 150.2 | 94.4 | 112.1 | 55.6 | 51.9 | 89.7 | 153.0 | 249.8 | 75.1 | 222.5 | 1479.4 |
| 1984 | 237.7 | 90.3 | 54.7 | 17.2 | 40.1 | 121.9 | 25.9 | 120.4 | 211.7 | 176.9 | 231.4 | 95.0 | 1423.2 |
| 1985 | 110.8 | 37.1 | 105.7 | 117.5 | 68.7 | 96.2 | 116.5 | 237.8 | 205.4 | 75.2 | 105.1 | 209.7 | 1485.7 |
| 1986 | 167.3 | 3.9 | 167.0 | 98.2 | 125.8 | 74.6 | 98.9 | 106.4 | 32.8 | 208.8 | 173.0 | 290.4 | 1547.1 |
| 1987 | 59.2 | 104.1 | 146.5 | 74.1 | 87.1 | 167.5 | 178.4 | 132.9 | 117.0 | 204.0 | 112.4 | 139.5 | 1522.7 |
| 1988 | 196.7 | 71.8 | 193.0 | 52.6 | 78.7 | 31.8 | 248.5 | 179.8 | 145.6 | 153.2 | 98.5 | 150.9 | 1601.1 |
| 1989 | 65.7 | 132.4 | 126.1 | 92.1 | 47.0 | 111.6 | 45.4 | 131.7 | 24.6 | 200.8 | 95.0 | 109.0 | 1181.4 |
| 1990 | 225.6 | 157.7 | 49.8 | 64.0 | 54.3 | 109.9 | 84.0 | 101.8 | 114.7 | 225.3 | 101.7 | 124.9 | 1413.7 |
| 1991 | 72.8 | 99.6 | 79.2 | 86.4 | 23.9 | 132.2 | 72.7 | 133.2 | 86.2 | 116.1 | 217.1 | 142.9 | 1262.3 |
| 1992 | 83.3 | 103.6 | 204.8 | 129.0 | 77.6 | 21.8 | 77.9 | 162.8 | 112.8 | 154.0 | 201.9 | 144.7 | 1474.2 |
| 1993 | 183.6 | 22.7 | 33.7 | 145.9 | 148.0 | 98.1 | 133.7 | 117.8 | 78.4 | 46.4 | 56.7 | 303.6 | 1368.6 |
| 1994 | 186.7 | 82.1 | 168.2 | 104.5 | 31.3 | 73.4 | 53.6 | 116.1 | 138.3 | 186.7 | 151.0 | 219.0 | 1510.9 |
| 1995 | 258.8 | 171.6 | 133.9 | 41.8 | 75.7 | 47.7 | 76.7 | 30.4 | 98.7 | 50.9 | 85.7 | 52.7 | 1124.6 |
| 1996 | 45.4 | 107.0 | 50.3 | 96.5 | 77.0 | 62.6 | 91.7 | 110.3 | 66.9 | 146.8 | 154.0 | 67.9 | 1076.4 |
| 1997 | 14.4 | 225.4 | 104.2 | 60.1 | 133.7 | 91.4 | 113.1 | 87.2 | 160.8 | 91.9 | 124.3 | 188.6 | 1395.1 |
| 1998 | 125.0 | 77.2 | 195.2 | 103.6 | 59.0 | 172.8 | 144.0 | 192.1 | 96.5 | 238.6 | 161.7 | 111.9 | 1677.6 |
| 1999 | 161.8 | 129.9 | 125.2 | 81.7 | 109.1 | 137.0 | 56.9 | 85.6 | 121.3 | 144.3 | 77.2 | 238.8 | 1468.8 |
| 2000 | 155.0 | 160.3 | 116.8 | 100.8 | 96.3 | 104.9 | 99.8 | 127.8 | 180.9 | 393.4 | 265.8 | 145.6 | 1947.4 |

| | | | | | | | | | | | | | |
|------|--------------|--------------|-------------|-------|--------------|--------------|--------------|--------------|--------------|-------------|--------------|--------------|---------------|
| 2001 | 70.1 | 175.6 | 67.1 | 136.6 | 101.2 | 118.0 | 55.6 | 159.6 | 176.1 | 147.9 | 171.9 | 88.5 | 1468.2 |
| 2002 | 129.8 | 278.6 | 63.6 | 86.5 | 145.7 | 109.5 | 121.2 | 131.2 | 44.4 | 185.9 | 194.1 | 169.0 | 1659.5 |
| 2003 | 119.2 | 56.3 | 77.8 | 75.7 | 192.3 | 83.5 | 107.9 | 29.0 | 101.6 | 74.6 | 184.4 | 205.3 | 1307.6 |
| 2004 | 217.0 | 110.2 | 67.7 | 70.0 | 52.9 | 125.2 | 91.1 | 255.6 | 153.4 | 224.5 | 143.9 | 175.1 | 1686.6 |
| 2005 | 151.9 | 94.2 | 53.4 | 114.4 | 111.2 | 97.4 | 62.6 | 106.9 | 130.9 | 152.0 | 189.5 | 97.6 | 1362.0 |
| 2006 | 83.4 | 92.5 | 247.4 | 101.0 | 193.1 | 60.3 | 44.3 | 162.9 | 142.4 | 173.4 | 166.5 | 254.7 | 1721.9 |
| 2007 | 185.4 | 99.2 | 70.0 | 37.4 | 103.5 | 210.0 | 252.2 | 141.2 | 121.4 | 92.8 | 117.8 | 228.5 | 1659.4 |
| 2008 | 263.6 | 89.2 | 130.4 | 82.3 | 40.5 | 114.8 | 162.1 | 207.7 | 191.1 | 254.2 | 113.1 | 125.0 | 1774.0 |
| 2009 | 113.3 | 49.5 | 78.5 | 53.4 | 131.7 | 58.5 | 208.7 | 136.1 | 86.9 | 130.7 | 303.4 | 111.3 | 1462.0 |
| 2010 | 79.6 | 76.8 | 88.6 | 25.7 | 34.8 | 24.7 | 192.2 | 74.7 | 274.3 | 106.5 | 123.5 | 50.4 | 1151.8 |
| 2011 | 130.5 | 186.5 | 45.6 | 58.2 | 164.8 | 99.4 | 119.2 | 202.7 | 184.9 | 228.1 | 84.6 | 265.7 | 1770.2 |
| 2012 | 188.0 | 124.3 | 30.9 | 98.0 | 79.1 | 213.0 | 165.6 | 159.4 | 312.8 | 194.7 | 146.3 | 271.9 | 1984.0 |
| 2013 | 101.8 | 67.0 | 44.9 | 63.1 | 106.5 | 89.8 | 83.0 | 127.1 | 109.4 | 164.8 | 116.1 | 134.9 | 1208.4 |
| 2014 | 192.0 | 155.2 | 94.7 | 47.0 | 104.7 | 77.0 | 77.0 | 158.0 | 26.9 | 151.0 | 90.1 | 204.9 | 1378.5 |
| 2015 | 149.2 | 79.0 | 128.9 | 56.0 | 178.0 | 58.4 | 129.2 | 102.7 | 46.6 | 80.6 | 327.1 | 399.1 | 1734.8 |
| 2016 | 211.6 | 184.3 | 113.5 | 101.2 | 56.0 | 131.0 | 154.9 | 245.7 | 104.6 | 38.2 | 194.6 | 91.6 | 1627.2 |
| 2017 | 125.2 | 137.9 | 197.3 | 32.8 | 69.1 | 151.4 | 153.3 | 170.7 | 243.5 | 257.3 | 210.0 | 187.6 | 1936.1 |
| 2018 | 172.8 | 70.6 | 91.4 | 101.0 | 26.1 | 47.8 | 57.0 | 140.6 | 180.8 | 109.0 | 71.6 | 236.5 | 1305.2 |
| 2019 | 78.2 | 73.4 | 235.4 | 53.9 | 92.0 | 127.7 | 132.3 | 180.8 | 294.5 | 227.6 | 101.0 | 208.0 | 1804.8 |
| 2020 | 124.8 | 333.2 | 114.8 | 24.3 | 37.6 | 194.5 | 266.0 | 200.0 | 93.3 | 262.3 | 191.4 | 167.4 | 2009.6 |

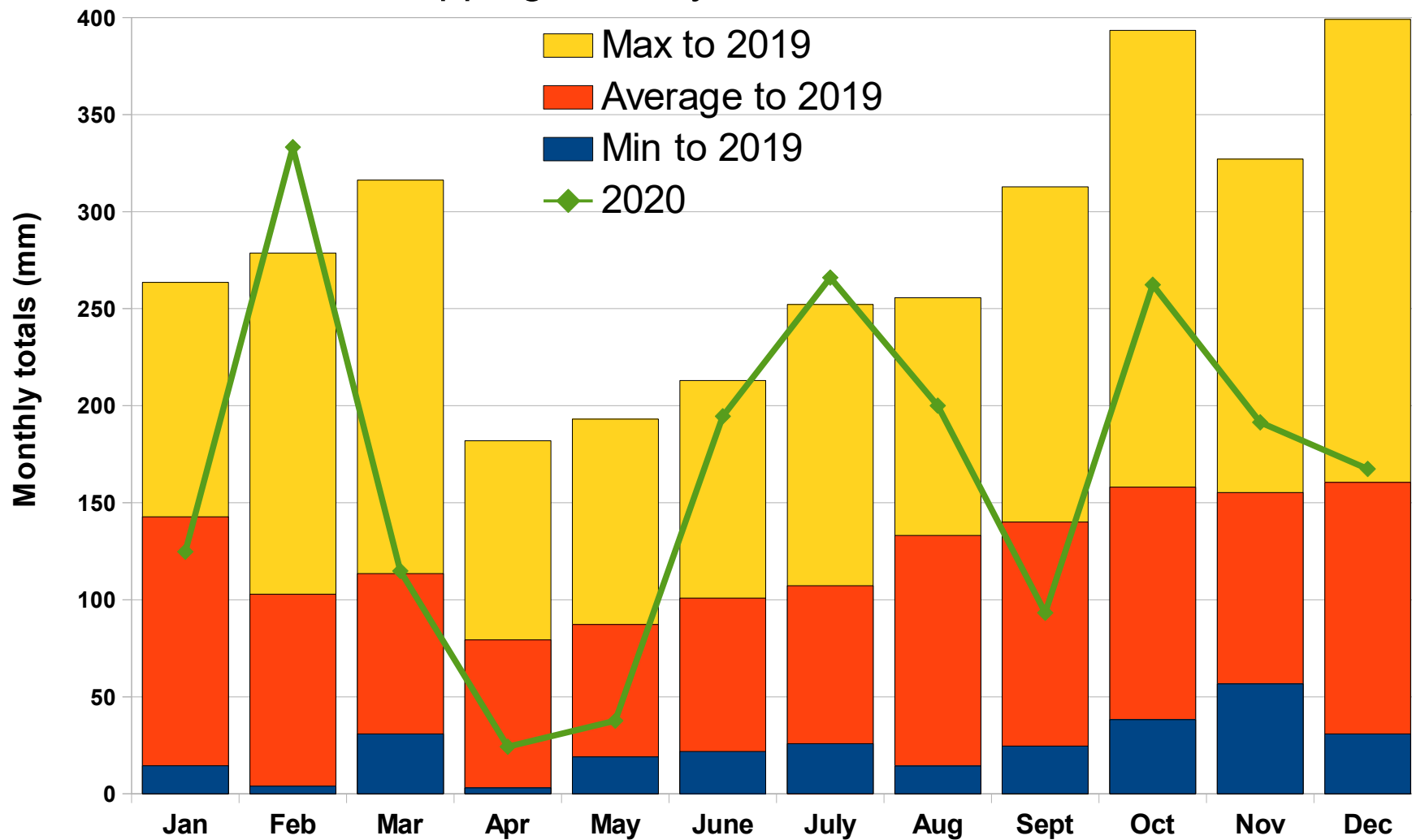
| | | | | | | | | | | | | | |
|------------|--------|--------|--------|--------|--------|--------|--------|--------|--------|--------|--------|--------|---------|
| Totals | 7406.3 | 5578.9 | 5903.6 | 4067.9 | 4486.4 | 5337.0 | 5736.3 | 6988.4 | 7373.5 | 8476.8 | 8262.6 | 8513.9 | 77545.8 |
| Average | 142.4 | 107.3 | 113.5 | 78.2 | 86.3 | 102.6 | 110.3 | 134.4 | 139.1 | 159.9 | 155.9 | 160.6 | 1491.3 |
| Max | 263.6 | 333.2 | 316.3 | 181.9 | 193.1 | 213 | 266 | 255.6 | 312.8 | 393.4 | 327.1 | 399.1 | 2009.6 |
| Min | 14.4 | 3.9 | 30.9 | 3.1 | 19 | 21.8 | 25.8 | 14.3 | 24.6 | 38.2 | 56.7 | 30.9 | 1076.4 |
| | Jan | Feb | Mar | Apr | May | June | July | Aug | Sept | Oct | Nov | Dec | Total |

From Mrs M Lord, Nan King's Farm, Chipping, Preston, Lancs. PR3 2QR

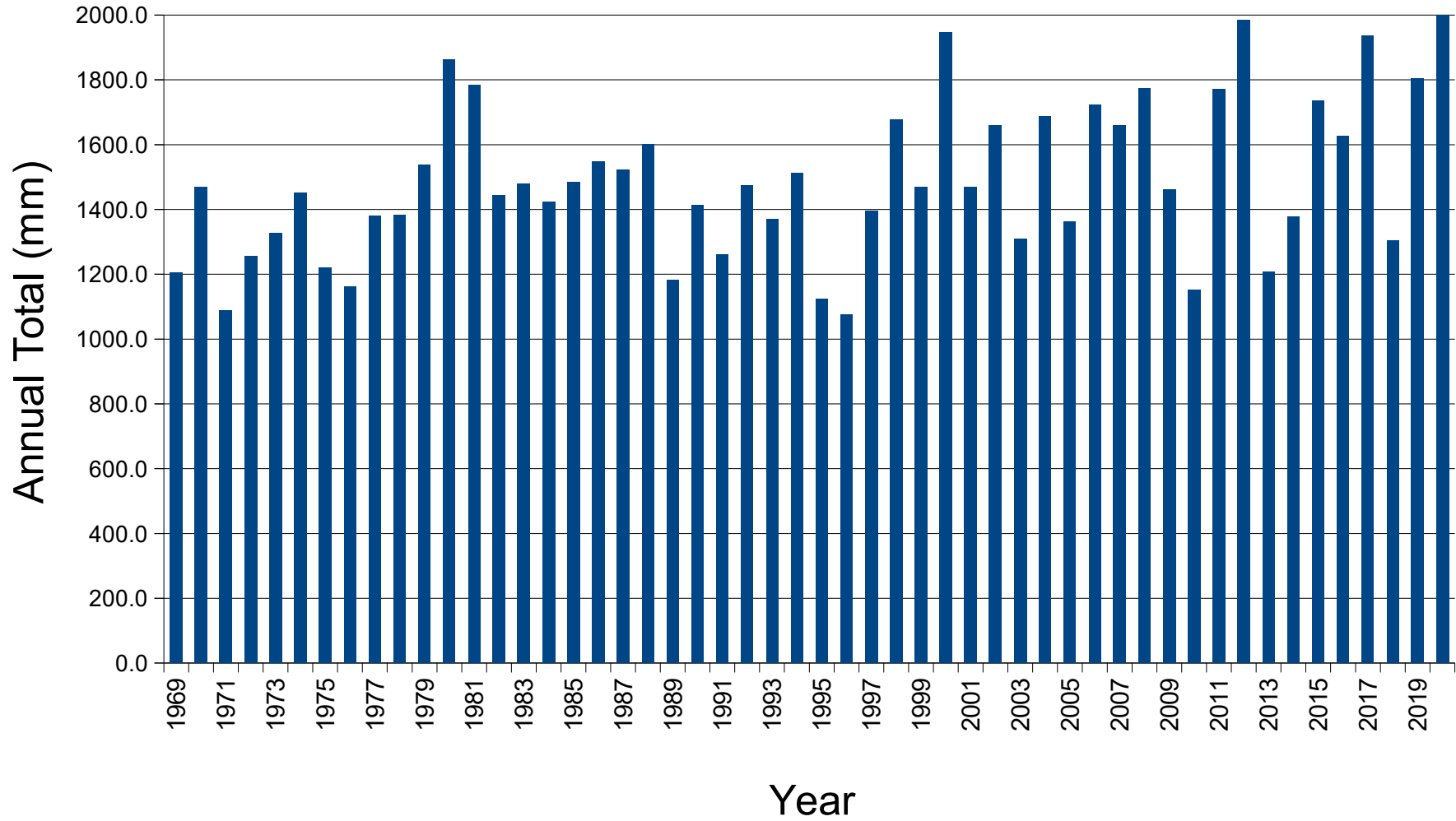
Chipping monthly rainfall 1969-2020



Chipping monthly rainfall 1969-2020



Chipping Annual Rainfall 1969-2020



Chipping Annual Rainfall 1969-2020
with trend

