

No. 183  
September  
2016

# Progress with the Village Hall

---



## Garden Club Visit to Fuller's Mill, Suffolk

---



# Gardening Club

---

August has been a great time for relaxing in our gardens; enjoying the hum of bees, sipping something cool and trying not to think about watering the veg as soon as the sun goes down! After a summer packed with visits to some inspiring and stunning gardens, we are now thinking ahead to our programme of gardening related talks designed to entertain and educate us in the coming autumn and winter.

On **Wednesday 21<sup>st</sup> September** we are planning something a little bit different for our first meeting of the new season to reflect some of the feed-back that we had from a recent survey of club members for more practical tips on the most useful gardening tools and equipment and how to maintain them. We also hope to find some answers to frequently asked questions, such as:

How do I sharpen my secateurs?  
How can I use my greenhouse in the winter?  
What is the best tool for weeding?

Please bring along a favourite gardening implement and share your enthusiasm for it with everyone else! Think about the best ways you've found to improve your soil and what plants grows best in your garden.

On **Wednesday 19<sup>th</sup> October** Michael Sullivan from the Alpine Plants Garden Society will speak to us about "Starting with Alpines". [www.alpinegardensociety.net/groups/essex](http://www.alpinegardensociety.net/groups/essex)  
Both meetings will start at 7.30pm at the United Reformed Church, Mashbury Road, Chignal Smealey, Chelmsford CM1 4TE. Cost: £3.00 includes refreshments.

For our **16<sup>th</sup> November talk**, we are hoping that we shall be able to meet at the new Village Hall and we are delighted that Zsuzsa Serer from Herbal Haven has agreed to speak to us again, this time on "Tropical" plants. Zsuzsa wil bring along some of her plants for us to touch and smell and will explain how to propagate and care for them.

Looking ahead to 2017, we are planning monthly talks and practical demonstrations on top fruit pruning, soil improvement techniques using wool composts and garden design.

We are a very informal club and give a warm welcome to newcomers. All of our meetings are open to guests and non-members and as a special incentive, we can offer you one free "taster" session so you can see whether you'd like to come along more regularly and join the club (a bargain at only £2.00 a year).

**For more information, please contact Graham Andrews (Chairman) on 01245 442625 or Lynn Ballard (Secretary) on 01245 440880, email: [gardening.chignalsmashbury@gmail.com](mailto:gardening.chignalsmashbury@gmail.com)**

# Wine Discovery

---

The wine group completed their year's activities in July with their annual barbeque. This was hosted by Gill and Dave as usual and a big thank you goes to them for all the hard work involved in hosting this event.

We were fortunate to have excellent weather and members enjoyed a fine selection of food and of course wines.

Norman Smith

# Women's Institute - by Janet Campen

---

We had a very entertaining Speaker at our July Meeting, Carol James showed us her amazing collection of costume jewellery that was popular in the 60's and each decade to the present day, bringing back memories of the fashion of jewellery we used to wear!

In August Brian Carline told us about his Amusing Life in Schools, with his audience adding some funny tales of the children they had known.

On the 20<sup>th</sup> of August we held a Coffee Morning at St. Marys Cottage which for the first hour we had to contend with showers, but thankfully the sun came out later and we were able to enjoy a pleasant morning. Funds were raised for our Speakers at W.I. and for the Deprived Children in Ukraine.

Our Knitting and Craft team help us finance our Speakers and supported Charities with the goods they produce. We would like to extend a big Thank You for their efforts, as well as, congratulations to them on being awarded a certificate from the "Revival Centre" in Ukraine. (Copy of certificate on page 4)

By the time you read this we will have had our September Meeting, with a Speaker on "The Sound of The Battle Cry". On October 6<sup>th</sup> we have a talk on "The History of the Hospital" and you would be welcome to join us at the United Reform Church at 2 pm for 2.30 pm.



# “Revival” Centre

## Gratitude

### REWARD TO

*Janet Campon and the team*

*for charitable activity, for essential help  
for disabled children, who suffered from Chernobyl  
catastrophe, socially unprotected poor families,  
in honor of 20<sup>th</sup> anniversary of the activity  
of the «Revival» Centre*

*Director  
of the «Revival» Centre*  *V. I. Pasichnyk*

*Chernihiv,  
23<sup>th</sup> June 2016*

# Responsibilities for Shrubs & Trees etc overhanging the Public Highway

---

The owner or occupier of a property has a legal responsibility (Highway Act 1980 s154) to ensure that the 'public highway' adjacent to a property is not obstructed by vegetation from their property. Local Authorities also have a legal duty to ensure that public highways and street lights are unobstructed, so usually inspect roads regularly and often receive complaints from members of the general public.

The public highway, is defined by law as consisting of any verge, footway, carriageway, bridleway or footpath that is maintained at public expense and over which the public has a right of way.

When Local Authorities become aware of such obstructions, they will usually advise the property owner or occupier of the problem. They may sometimes raise the issue with an owner/occupier even if the vegetation only overhangs the pavement/roadway by a small amount - this may seem 'small minded' but where should they draw the line? It is easier for all concerned to use the specified rules. If the owner/occupier does not take corrective action within a reasonable time (the Local Authority will normally specify a time limit for the work to be completed), the Local Authority can issue a formal notice for the work to be undertaken, and if that is ignored, they can do the work and charge the owner/occupier.

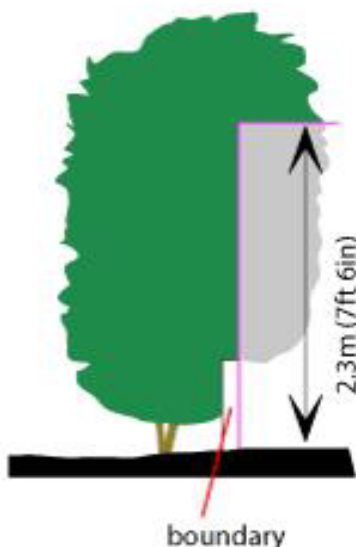
## The Requirements

Although the Highways Act 1980 doesn't specify any actual measurements for overhanging vegetation, the requirement should be met by:

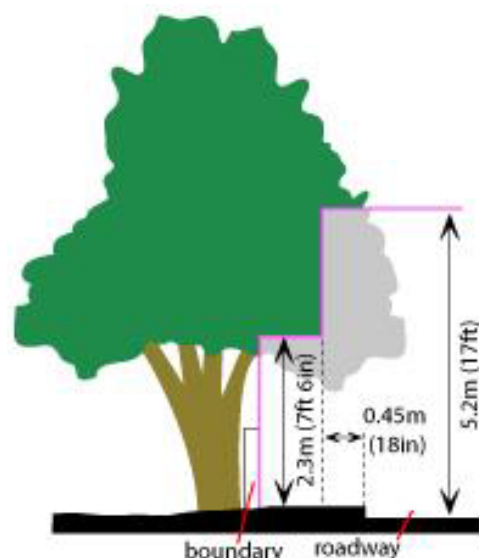
- For pedestrian areas, minimum headroom of 2.3m (7ft 6 inches).
- For carriageway and an area immediately adjacent to it (for a distance of 0.45m (1ft 6 inches)) minimum headroom of 5.2m (17ft).

In both cases, all the vegetation should be cut back vertically. See the diagrams below.

Trimming over footpath



Trimming over footpath and roadway



## Community News

---

### Children in Need Charity Fund Raising Event

The July 16<sup>th</sup> garden event raised a total of £361

Thank you for all your support. The sun shone that day and so did you.

The Children in Distress Charity will be delighted with this donation.

Thank you,

Sylvia, No 1 Boundary Bungalows

## Community Information

---



If the power goes out, call 105.

You'll be connected to your local electricity network operator for help and info.

[www.powercut105.com](http://www.powercut105.com)

## Bowls Club

---

The summer months tend to be fairly quiet but we have enjoyed some friendly matches. The game against Ford End was drawn and at Tipps Cross we won 5 – 3. Both evenings were enjoyed by all.

In July we held our Quiz and Strawberry Supper in Martyn and Yvonne's garden. We were blessed with good weather, questions we could mostly answer and very tasty strawberries and cream.

September sees us playing a friendly match against Black Notley and the League Season commences in October.

We are looking forward to being able to play in the new Village Hall and the challenge of yet another floor to come to terms with!

Please come and join us at High Easter Village Hall on Thursdays from 7.30 pm to 10.00 pm. For more details please contact Gordon on 01245 231406.

## Date for Your Diary - Macmillan Coffee Morning

Friday September 30<sup>th</sup> 10.00 - 12.00  
at the United Reformed Church, Chignal Smealey

The Coffee Morning is the perfect chance to catch up over a cuppa and a slice of something yummy and it's all for great cause



## Superfast Broadband Update

---

At the recent Essex parishes Superfast Essex Programme event Essex County Council and BT announced they are ahead of schedule on connecting Urban areas with fibre broadband and are now progressing with stage two the rural areas program. A 1.8 million rebate from BT to ECC is helping to expand fibre roll out to rural areas including the Chignals. The priorities will now focus on those areas that have registered the greatest level of interest on the Superfast Essex website. Please help speed up our connection by registering your interest on the Superfast Essex website at

<https://forms.essex.gov.uk/default.aspx/RenderForm/?F.Name=gzoof7waFK&Hid eAll=1>

If you have already registered Duplicated entries will not count as extra demand in an area. However, they accept separate 'Business' and 'Home' entries where registered at the same address.

The more people that register the sooner we are likely to be upgraded

## From the County Council



### Councils to develop plans for St Peter's College site

Plans for the future use of the former St Peter's College site in North West Chelmsford are currently being developed, and will be shared with the local community to seek its views on what kind of development should happen. The school closed in 2011 and a large part of the site has been unused since then. In 2014 a number of community organisations moved into refurbished accommodation in the former South Block, together with the Thriftwood Academy. Essex County Council, which owns the land, is working alongside Chelmsford City Council to develop a 'masterplan' for the remainder of the site.

Once plans for the site are available for consultation, further details on public events and drop in sessions will be available from the Chelmsford City Council website. So if you have views on the site's future, this is a chance to put your case. Go on line at [www.chelmsford.gov.uk](http://www.chelmsford.gov.uk)

### 'Dead Slow' campaign

As we come into the summer months, horses become a common sight on many of our rural roads as riders enjoy the warm weather and beautiful scenery. The British Horse Society has introduced its 'Dead Slow' campaign, which calls on all vehicle drivers to slow down to 15 miles per hour when they encounter horses on the road and to give riders plenty of room. This will prevent some of the 2,000 reported of road incidents involving vehicles and horses every year. More advice for drivers and horse riders is available on the Safer Essex Roads Partnership website at [www.saferessexroads.org/road-users/horse-riders/](http://www.saferessexroads.org/road-users/horse-riders/).

If you have any problems concerning **County Council** matters please let me know on **01245 421524** or email [cllr.john.aldridge@essex.gov.uk](mailto:cllr.john.aldridge@essex.gov.uk)

Chairman's Blog <http://dnn.essex.gov.uk/chairmanblog/Home.aspx>

John Aldridge CC – August 2016



# Chignal Parish Council Meeting 11<sup>th</sup> July 2016

---

**Present:** Cllr Chris Anstey, Cllr Mr. Steve Middleditch, Cllr Miss Lynn Ballard (Chair), Cllr Ms Linda Nelson (Vice-Chair), Cllr Mr. Martyn Towns

**In Attendance:**

Cllr Nicolette Chambers, Chelmsford City Council  
Mrs. Janet Mills (Parish Clerk) and 7 Parishioners

**1. Apologies For Absence**

Cllr Malcolm Feltwell

Cllr John Aldridge, Essex County Council

**2. Register Of Declarations Of Interests**

Cllr Towns expressed an interest in Planning Applications 16/00905/FUL and 16/00906/LBC – Grays Farm, Chignal Road, Chignal Smealey.

**3. To Approve The Minutes Of The 9th May 2016**

With a minor amendment to item 15(G); *to read... for information not publicity* the minutes were approved and signed by the Chairman as a correct record.

**4. Matters Arising From The Minutes**

**(a) Chelmsford Local Plan**

Comments and concerns raised by Chignal and neighbouring Parishes on the Issues and Options Local Plan Document had been recorded and acknowledged by CCC Development Policy Committee held in June. The next meeting of the CCC Development Policy Committee on 14<sup>th</sup> July 2016 would be asked to approve work to draft a Preferred Options Local Plan for public consultation early in 2017. A further joint meeting with neighbouring parishes in North West Chelmsford was arranged for 12<sup>th</sup> July to formulate a joint response to the City Council's recommended approach to drop all of the 3 Spatial Options proposed in the Issues and Options Document in favour of a new Spatial Option that would reflect the preferred Spatial Principles and ensure that new development is supported by necessary infrastructure. A further report would be given at the September Parish Council meeting.

**(b) Broad Band**

The Parish Council had received an apology from Super Fast Essex for not responding to questions for information. Currently parts of the Parish were on the interactive map to be completed the end of the year and some areas of the Parish were to be supplied from Roxwell. This work was expected to be completed at the end of next year (2017). There were 15 to 17 houses in the Parish that were not recorded. Cllr Middleditch would write to the 15-17 houses regarding the matter. Cllr Middleditch would attend the next meeting of Super Fast Essex which was to be held 22<sup>nd</sup> July.

**5. Public Question Time**

- a) Members of public had raised concerns about fly-tipping and unauthorised vehicle and scramble bike access to Bridleway 33 between The Green and Pengy Mill. After discussion it was agreed that the PC and local land owners would progress the matter with Essex County Council's Public Rights of Way Manager.
- b) In answer to a question regarding a number of conifers that needed to be felled at the entrance to Chignal Hall Lane, it was explained that, because of nesting birds, the trees would not be cut down until September.
- c) A member of the public raised concerns that her telephone line had been faulty for a week. It was explained that regrettably this was a regular occurrence in the village. Cllr Nelson agreed to contact BT to ask if a representative could attend a future meeting of the Council, to answer people's concerns.

**6. Chairman's Report**

The Chairman gave the following report:

- a) The Employment Committee would undertake the Clerk's annual appraisal in August or September.
- b) The Clerk's bid for money to be used on new IT equipment from the EALC Transparency Fund had been successful. The Parish Council was to receive £1,015 shortly. This would be used for a new laptop, printer and software.

# Chignal Parish Council continued

---

## 7. County and City Councillors' Reports

**a) Portfolio** - Cllr Nicolette Chambers explained her new CCC portfolio, which was mainly involved with the internal workings of the City Council. Her responsibilities included Legal Democratic Services and Human Resources. Her portfolio no longer included ITC, digitalisation was being investigated.

**b) Events** - Regrettably a recent event held at Highlands Park and the annual 3ft Festival had not been as successful as they might have been. The event was held on the cusp of the CCC outsourcing its Events Department; lessons had been learnt for next year.

**c) Recent Flooding** - The CCC had a flood alleviation scheme, with dedicated telephone lines in case of emergencies. On Referendum Day special vehicles had to be mobilised to assist people to the polling stations at Boyton Cross due to the flash flooding.

**d) John Lewis** -The long awaited John Lewis Store was due to open in Chelmsford on 29<sup>th</sup> September. Waitrose Supermarket was also looking at sites in the City.

**e) Gardening Express** -The owners had confirmed that from now on all cars would be parked on site and that the new plans proposed to double the amount of hard standing for lorries to park unload and turn on site.

**f) Essex Chronicle** – The Chronicle was to be published on-line rather than in print in future

## 8 Parish Councils Standing Orders and Financial Instructions-

Cllr Anstey proposed and Cllr Nelson seconded a motion that the latest version of Standing Orders and Financial Instructions, the government guidance for local government, be adopted by the PC. With no objections the ***motion was carried.***

## 9 Planning Committee

Cllr Nelson proposed and Cllr Ballard seconded a motion that the revised version of the Planning Committee Terms of Reference be approved by the PC. With no objections ***the motion was carried.***

## 10 Budget Committee

Cllr Nelson proposed and Cllr Anstey seconded a motion that the revised version of the Budget Committee Terms of Reference be approved by the PC. With no objections ***the motion was carried.***

## 11. Parish Plan

The minutes from the Committee meeting held on 6<sup>th</sup> June 2016 were received and noted. Cllr Anstey advised the meeting that the text had been agreed and that work was progressing on adding the photos and images. Once complete, 400 copies of the 28 page plus the cover would be printed. This would cost £522.00. Two hundred copies of the 8 page Action Plan would be printed separately at a cost of £125.00. Cllr Nelson proposed and Cllr Ballard seconded a motion that the remaining Parish Plan Budget of up to £942.60 could be used to complete the work of the Parish Plan Committee, ***with no objections the motion was carried.***

## 12. Jubilee Orchard Sub-Committee

The minutes from the Committee meeting held on 3 June 2016 where received and noted. Cllr Ballard advised the meeting that the Queen's 90<sup>th</sup> Birthday celebrations had been a great success: everyone particularly enjoyed the scarecrow event and the plant stall had raised £80.00. A Fruit Celebration Event to be held on 16 October in conjunction with the Harvest Festival at St Nicolas Church was currently being planned.

## 13.Planning Applications

The following decisions where noted:

15/01748/FUL: Land between Marshalls and 4 Ash Rise, Chignal Road, Chignal Smealey. Construction of a two storey detached dwelling with detached Garage. **Application permitted**

# Chignal Parish Council continued

---

14/00976/MAT/1 to MAT/9 Western Parcel Land, North of Copperfield Road, Chelmsford - Material amendment to permission reference 14/00976/FUL (Residential development of 60 dwellings together with associated and ancillary development including access, roadworks to Hollow Lane, servicing, amenity space and landscaping.) **MAT 1 MAT2 approved MAT 3 –MAT 9 Pending Consideration**

**16/01155/AG Land at Pieces Cottage,** Mashbury Road, Chignal St James.- Agricultural building for the purposes of a horticulture business. It was noted that although this application was not for public consultation the PC had raised concerns and put comments forward to the planning department.

## **New Applications- Considered - to Meet the Planning Timetable**

**16/00877/FUL:** Brick Barns Farm Mashbury Road Chignal St James-conversion of existing barn to a two bedroom dwelling. **Comments:** in line with guidance in the Chignal Villages Design Statement that “the conversion of redundant buildings to either residential or low key commercial use is preferable to them lapsing into decay. An overwhelming majority of people felt that, when agricultural buildings were converted they should retain their original ‘barn’ character”. **No objections**

## **New Applications to be Considered.**

The meeting considered and made comments on the following applications:

**16/01093/OUT:** Land South West of 213 Chignal Road, Chelmsford. Outline planning application for residential development comprising three dwellings. It was noted that although this site did not lie within the Parish, consultation was due to its close proximity to the Parish boundary. **Comments: *the Parish Council raised concerns regarding access to and from the proposed properties from the Chignal road.***

**16/00905/FUL and 16/00906/LBC:** Site at Grays Farm, Chignal Road, Chignal Smealey – change of use of redundant barn to residential use. **Comments:** in line with guidance in the

Chignal Villages Design Statement that, “the conversion of redundant buildings to either residential or low key commercial use is preferable to them lapsing into decay. An overwhelming majority of people felt that, when agricultural buildings were converted they should retain their original ‘barn’ character”.

## ***The Parish Council Support this application*** **14. Representatives’ Reports – To note**

**A) Playing Field** – The field doubled up as a car park and housed toilet facilities used at the Queen’s Birthday Celebrations. The Croquet club had enjoyed a better season this year. A successful youth archery activity had been held; this may be repeated in future. Hedges surrounding the playing field, which may need cutting, would be reviewed in the autumn.

**B) Village Hall Liaison-** Frequent meetings were currently being held with regarding the layout of the building. The walls of the new building were now being erected. Work was progressing to meet the autumn completion date.

**C) Newsletter Including Website** – the July edition was now ready for distribution.

**D) Gravel Liaison-** Dates would be investigated for local people to view the restorations of the site. Cllr Ballard would circulate these.

**E) Community Safety-** Cllr. Middleditch and Cllr Towns had attended the rural crime event at Boyton Hall recently. A number of useful guides and brochures had been gathered for use within the Parish. An introduction to first aid event, held in the village hall and hosted by the St John’s Ambulance was being investigated. The St John’s Ambulance organisation also provided safety checks on first aid equipment. It was noted that there was a first aid box held at the Orchard which may need reviewing and the Croquet Club, further to a recent minor accident will consider holding a first aid box. With regard to Neighbourhood watch, 20 people in the Parish had expressed an interest in being watch co-ordinators. Community Safety Officers had suggested it beneficial to divide the Parish into small areas for each co-ordinator to manage. The date for Parishes to meet again in Writtle with senior Police Officers, was awaited.

# Chignal Parish Council continued

---

**F) Highways-** It was noted that the matter of the damaged/faulty manhole cover by Stevens Farm barns remained outstanding. Cllr John Aldridge was aware of the situation. It was suggested, that as many people as possible should report the problem on the online Essex County Council Highways system, this might result in some action being taken. It was also noted that the pot holes at Pieces Cottage had been filled.

**G) Footpaths/Bridleways -** Questions would be raised at the next meeting with Lafarge - Tarmac regarding progress in opening the new bridleway on the restored landfill site.

**H) Telephone Box - Chignal St. James-** No report at this time

**I) Tree Warden –** The Hybrid Black Poplar overhanging the highway on a corner of Mashbury Road had been reported to the CCC Tree Officer. The Clerk would also write to the Landowner regarding the matter. Cllr Ballard reported that she had been invited to attend a free CCC course in August to inform Tree Wardens on ash die back.

## **15. Finance**

The following was noted and approved

**a) Balances in the accounts,** as at 30 June were: Current Account £21,582.80; Savings Account £3,240.13

### **b) Cheques issued since last meeting**

Village Hall Hire: £45.00, Parish Council Insurance £193.09

Mobile toilet £114.00, EALC affiliation £95.07, DBF May Newsletter £75.53

DBF July Newsletter, £84.68.

## **16. Correspondence for Information**

**It was noted that Jamboree-**Organisers of the International Scout Jamboree had invited Members of the PC to attend the Jamboree on the morning of 31 July 2016.

**Cricket Club-** by chance a Parish Councillor had discovered that the Cricket Ground with a guide price of £30,000 to £40,000 would be going to Auction on 25 July 2016. The Cricket Club currently had a 20 year lease. The Parish Council expressed disappointment that they had not been informed about the imminent sale of this important amenity site in Chignal Smealey. The information was noted.

## **17. Late Urgent Business for Information**

**18. Date of Next Meeting: Monday 12<sup>th</sup> September 2016, 7.30pm in the United Reformed Church, Mashbury Road, Chignal Smealey CM1 4TE.**

**The meeting will be preceded by a Budget Committee Meeting to be held at 6.30 pm. The Public are welcome to attend both meetings.**

# Changes to Recycling in Essex

---

Waste from Essex businesses which has been illegally left at recycling centres has left taxpayers with a disposal bill running to hundreds of thousands of pounds.

'Man with a van' operators offering cheap rubbish clearance, property developers and independent building and home improvement trades have swamped many sites. Local facilities have seen the amount of DIY and construction waste alone leap by over 50% in the last two years.

To tackle the problem, Essex County Council is set to announce changes to the way sites will operate in the future, to prevent taxpayers footing the bill for business waste, reduce queues for genuine customers and prevent daytime closures. The rule of thumb of how the law works, is that household waste covers items which a householder would normally take with them when they move house. If the waste is something you would leave behind, like doors, a fitted kitchen or bathroom, or soil and hardcore from a garden, it is construction waste. And business waste of any kind is strictly excluded. The current plan to improve recycling centres means that from the 31<sup>st</sup> October, about half of the county's sites will also no longer allow vans or multi-axle trailers in and will no longer offer any disposal facilities for DIY and construction waste.

The remaining sites will still offer access to residents who only have access to a commercial vehicle, but will place strict limits on how much DIY waste can be disposed of. Vans and pick-ups will be under greater scrutiny though, and those identified as bringing in waste from any kind of business activity will be refused entry and owners may be liable to prosecution.

Councillor Simon Walsh **Cabinet Member for Waste and Environment** said: "The taxpayer cannot continue to pick up the bill for businesses which don't dispose of their waste properly. These operational changes will stop people unlawfully disposing of business and trade waste at recycling centres at the expense of the taxpayer, whilst still providing the facility for residents to dispose of their legitimate DIY waste when carrying out ad-hoc work at home themselves."

Residents who are unsure about whether to take waste to a recycling centre or whether they will need to rent a skip for larger home improvement projects after 31 October should check the Recycle for Essex website before heading to their local site.

For more information, please contact Carla Johnson – [Carla.johnson@essex.gov.uk](mailto:Carla.johnson@essex.gov.uk), tel: 03330 131891.

Chelmsford recycling centre will still take DIY and construction waste materials, subject to the following per household limits:

In any 28-day period

- three wheelbarrow loads (one car boot full) of soil and hardcore and one wheelbarrow load of tiles and, in any six-month period.
- three large ceramic items, e.g. toilet or wash basin;
- one uPVC or wooden window frame;
- one uPVC or wooden external door;
- three wooden internal doors; and
- any elements of a built-in kitchen

DIY and construction waste is any material that has arisen as a result of construction and demolition to a home or garden. There is no duty on local authorities to accept or dispose of DIY and construction waste from residential properties. Although the RCHWs are required to accept all household waste, this is a defined term under the [Environmental Protection Act 1990](#) and the [Controlled Waste Regulations 2012](#) and does not include all waste types generated by a household

## The Chignals and Mashbury Jubilee Orchard

---

Firstly, thank you to all who came to the Queen's picnic in June. It was a hugely successful event with competitions and games, along with food going down well! Once again the scarecrow competition was a great talking point too.

The Orchard continues to do well with crops of apples appearing, although not such a good year for the fruit on the quince trees.

It is coming up to that time of year when we need to cut the grass ready for the winter. The committee will hire grass cutters to do the cutting, so we are looking for volunteers to rake up the grass a few days later. The date for the rake up is 10<sup>th</sup> September at 10 am - please if you can make it, bring a garden rake and gloves - the more people the merrier and the quicker it gets done.

We are continuing with our fruit celebration as before on Sunday 16<sup>th</sup> October at 12.15 pm. This will follow on from the Harvest festival at St. Nicholas Church. Please bring any fruit, vegetables or home grown produce that you would like to share with others and also come and take what you would like and can use. Weather permitting; there will be coffee and tea on offer in the orchard. We are not planning a sharing lunch this year due to the uncertainty of the village hall being ready.

I would like to take this opportunity to once again thank the Molly men who have performed at our Wassailing event for the last few years. They will; however be taking a well-earned break from performing for us in the New Year, so this event will not happen in 2017. We will publish details of the events we do plan to hold next year in the next edition of the Chignal news.

Wishing you all a lovely summer and look forward to seeing you on 10<sup>th</sup> September and 16<sup>th</sup> October.

Kind regards

Sandra and the Orchard Committee

# St Nicholas Church -A Service of Healing

---

This account was written by someone who came to the healing service at Great Waltham

On Sunday the 24th July at 5.00pm a healing service was a welcome peaceful space from the pressure of our everyday routines, time for God and for healing to begin. Sue Joyce treated us to her beautiful voice accompanied by Steve Back and the service was led by Revd Caroline supported by her husband Terry.

After a time of singing, a talk explained that healing can be for yourself or someone else, for physical, mental or spiritual concerns or more general needs: our shared world comes to mind.

We heard about a special prayer which someone had come across in a time of great need composed by an American priest Father Peter Rookey (1916-2014) who died aged nearly 98. As a young boy he had been blinded by an accident with a firework and had been told by doctors that he would never see again. Through the power of prayer he had been completely healed. As an adult he became a priest dedicating his life to God. His ministry took him to countries all around the globe. From his first healing service in Northern Ireland in 1948 until his death remarkable healings took place. When people asked in amazement about his "gift" he simply said, 'This is God's work not mine. He does all the healing. I just pray.' His prayer was then read and people present given the option of making it their own.

Then we were invited to come forward to Caroline for prayers of healing and to be anointed with oil if we so wished. One of the participants had had a worrying week. Although scans for his condition are ongoing, with one due the following day, during that week some of the original symptoms had returned and his family had been very apprehensive. Caroline lay hands on him and other family members were present, and they all agreed it was extremely calming. I think I can say as a group, we left the service feeling reassured, with our spirits a little lighter. As for the worrying scan, the good news received the next day was that it was clear!

We will be holding our next Evening Space on Sunday 25 Sept with Sue Joyce singing and our next Healing Service will be on 23 October, both at 5pm at Great Waltham. Everyone welcome.

Revd Caroline Brown

# Church of England Services

---

## September Sunday Services

The service this month at St Nicholas will be on Sunday 18<sup>th</sup> September at 11am with Sandra Sykes leading and Jan Wright preaching.

Every Sunday in September there will be a service at Ford End at 9.30am and Great Waltham at 11am which is a Communion unless it a family service (details below). On 11<sup>th</sup> September there is also a traditional communion at 8am at Great Waltham and on 25 September there will be an evening space at 5pm at Great Waltham.



### **Pet service 11<sup>th</sup> Sept 11am Great Waltham**

Bring your pet or teddy to family pet service for fun & blessing. We meet in the churchyard and have a great time. Refreshments for animals and humans with them. Humans should be well behaved – the animals take care of themselves.

### **Growing wings! 25<sup>th</sup> September 9.30am Ford End**

We know that we are not angels but how can we learn from to take ourselves lightly?



angels how

Come along and see for the relaunch of the family services

at Ford End.



### **Let us know what you think**

During September we will be asking people what they think of our church services and what we could do to help people develop their relationship with God. We would like to hear from you! Come onto our website [www.greatwalthamchurch.org.uk](http://www.greatwalthamchurch.org.uk) and click the link

We are then having an Awayday on Saturday 1<sup>st</sup> October discussing the findings and our vision from 10-4.30pm. if you want to come contact Alison on [admin@littleandgreat.org.uk](mailto:admin@littleandgreat.org.uk) or 07957 228467. Suitable for all the family.

### **Harvest Celebration**

16<sup>th</sup> October 11am Come and celebrate harvest with us, an important day for the whole community, followed by Fruit celebration in the orchard at 12.15

### **Autumn Services to remember**

Sat 29<sup>th</sup> October 10am Great Waltham Memorial service to remember our loved ones who have died.

13<sup>th</sup> November 11am Remembrance Day service where we remember those who gave their lives for us in wars around the world

**Editor:Linda Nelson  
Ivy Cottage  
Chignal Smealey  
CM1 4TA**

**Tel: 01245 442625  
Fax: 01245 442952**

**Email: [chignalswe@btinternet.com](mailto:chignalswe@btinternet.com) Web:[www.essexinfo.net/thechignals](http://www.essexinfo.net/thechignals)**

**Articles to the editor by 24<sup>th</sup> October 2016 for next publication 10<sup>th</sup> November 2016**

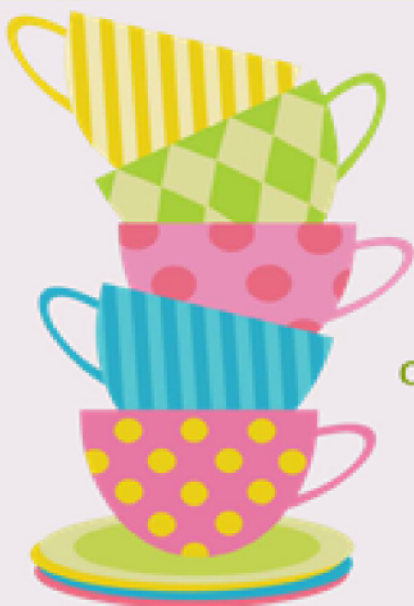




## Community *Tea Time*

North Melbourne Library

1st and 3rd Saturdays of month, 2pm



For more information  
contact North Melbourne Library  
on 01245 442292



Essex County Council

---

# New Motherhood Support

Hosted by the Essex Doula

# MAMA DO!

## CELEBRATING PREGNANCY & BIRTH

AN INFORMATION EVENT  
CONNECTING YOU TO LOCAL  
SUPPORT & SERVICES

MIDWIVES, HEALTH VISITORS, CHILDREN'S CENTRES, DOULAS, NCT, BREASTFEEDING COUNSELLORS, PANDAS, POSTNATAL SUPPORT GROUPS, INFANT FEEDING SUPPORT, HYPNOBIRTHING, PLACENTA ENCAPSULATION, HERBALIST, SLING LIBRARY, NUTRITIONIST, REFLEXOLOGY, MOTHER BLESSING TEXT, BIRTH SPACE IDEAS, TALKS, BEYHA ARTIST, MASSAGE, JUICE BAR, STALLS, RATTLE & GOODIE BAGS

**SUNDAY 11TH SEPTEMBER**

**Highwood Village Hall**  
Highwood Road, Chelmsford CM1 3QW

**TICKETS £6**  
1pm - 5pm

[www.jackandjillmamas.co.uk](http://www.jackandjillmamas.co.uk)