

No. 181
May
2016

Goodbye Village Hall

Kate Middleditch - a member of the Village Hall Committee saying a fond goodbye to the Village Hall before it was demolished.



50 Years of Service to the Village Hall



Mrs Cherry Scott, seen here with the gifts she received recently to mark her 50 years' service to the village hall. Mrs Scott was presented with a specially designed card, made up of photos taken of her at many different village hall events, a bouquet of flowers and a 'tea for two' gift voucher.

Gardening Club

Since the last edition of 'Chignal News', we've enjoyed some practical demonstrations by another two excellent speakers in the warm and welcoming meeting room of the United Reformed Church in Chignal Smealey.

Paul Harrison had suggestions for us on a wide range of bulbs that flower in every season of the year, both outside in the garden and in the home. In March Zsuzsa Serer from Herbal Haven, www.herbalhaven.com brought along a tempting selection of herbs in pots and provided practical tips on how to propagate them by seed sowing and taking cuttings.

Thanks very much to Steve Middleditch for devising a very entertaining gardening related quiz for our AGM in April and to Elaine Hinchliffe, a new member of our committee, who is carrying out a survey of members views on the way the club operates and how we can attract new members.

As there will not be a fete in June this year because the village hall will be out of action this summer for rebuilding works, the Gardening Club will be organising a plant stall at the **Queen's 90th Birthday celebration picnic on the afternoon of Sunday 12 June, (3pm – 5pm) in the Community Orchard**. Come along and fill up your gardens with fresh produce, vegetable seedlings, shrubs and herbaceous plants

Our garden visit programme for May to July 2016 has been finalised, including a coach trip to Fullers Mill garden in Suffolk. We welcome non-members on these trips as well so please come along and join us – you don't need to have any gardening knowledge to enjoy these beautiful gardens.

Parsonage House, Friday 20th May, 2pm for 2.30pm Wiggens Green, Helions Bumpstead, Haverhill, Essex CB9 7AD

C15 house (not open) surrounded by 3 acres of formal gardens with mixed borders, topiary, pond, potager and greenhouse. Further 3-acre wild flower meadow with orchids and rare trees and further 3 acre orchard of old East Anglian apple varieties in two small fields across the lane.

Cost: £10.00 per head for the garden entrance and tea/coffee and cake.

Elwy Lodge, Wednesday 15th June, 7pm West Bowers Rd, Woodham Walter, Essex CM9 6RZ

Flowing lawns, herbaceous borders, unusual plants, trees, wildlife pond, sedum roof and a meadow area. Secluded chamomile-scented lower garden with raised vegetable beds and fruit garden leading to a delightful summer house with amazing views over the countryside towards the Blackwater Estuary.

Cost: £6.00 per visitor, including tea/coffee and cake

Women's Institute - by Janet Campen

In April twenty six members and friends enjoyed our Annual Lunch at the U. R. Church with an excellent meal by J.M.S. Catering.

In May we will be holding our A.G.M. on the 12th - the 5th being an Election - and our Speaker will be Danielle from the Crystal Centre

Bowl's Club

The winter season is now virtually finished and a very successful one for the Club. We have won the League in only our second year of entering and have reached the final of the West Area Shield. We now have to play Roxwell home and away to see if we can win the Shield and do the double. Our domestic competitions with Yvonne Towns as Ladies Champion and Gordon Hillyear taking the men's title. The Pairs are still to be resolved.

We continue playing through the summer on a Monday evening, moving from RHP Bowls Club to High Easter Village Hall. Hopefully by the autumn we will be back in our new Village Hall.

On the social side we have walks organised around Pleshey and Heybridge plus an evening's Pitch & Putt, this on top of a number of Friendlies against the local villages.

New members still welcome, contact Gordon on 231406

Wine Discovery

At our February meeting Robert Bishop from Catchpole Cellars gave us a presentation of French wines. We sampled three white wines and three red wines as follows:

2014 Sauvignon Blanc, Desire Francois
2014 Viognier, Chevalier Georges, Languedoc
2014 MCON-Prisse Blanc, Domaine de la Feuillarde, Maconnaise, Burgandy
2014 Grenache Merlot, Desire Francois, Languedoc
2011 L'Ocre Rouge, Chevalier Georges, Languedoc and
2012 Bourgogne Aligote, Domaine Philippe Milan, Burgandy

The wines ranged from approximately £10-£19 and it was generally felt that these wines were underwhelming for the price.

In March the group received an excellent presentation by one of our members - Roland Stanley. Roland works for Aldi and we were fortunate to be able to sample six wines from Aldi's LOT collection of wines. These premium wines are a result of an exclusive collaboration between Aldi's in house wine buying team and some of the best winemakers in the world today. The LOT Series is a range of fine boutique wines that are available exclusively to Aldi in strictly limited quantities and are presented in individually numbered bottles. Each wine tells its own special story and Roland was able to give the group a wealth of information about each wine.

The wines sampled were:

Sauvignon Blanc 2014 from Chile
Chenin Blanc 2015 from South Africa
Toscana 2014 from Italy
Gres de Montpellier Languedoc 2014 from France
Cabernet Sauvignon 2014 from Australia
Colchagua Carmenere 2012 from Chile

All the wines were very favourably received and represented excellent value for money at £9.99 a bottle.

April saw our first meeting at our temporary venue in St. Andrew's Hall. Elaine kindly arranged two taxibuses to transport us to and from the hall. Norman our Chairman stood in at short notice when we were let down by our speaker. Our knowledge of wine was well and truly tested with a blind tasting in which we had to determine the country, the grape and the price of the wines tasted. The wines sampled were:

Pinot Gris from France at £8.25
Riesling from Australia at £5.99
Chardonnay from France at £11.99
Pinot Noir from New Zealand at £21.00
Malbec from Argentina at £14.99
Tempranillo from Spain at £32.00

There were some very mixed results and lots of guessing – some good and some not so good! However, the prize went to John Moorhouse. A fun night was had by all.

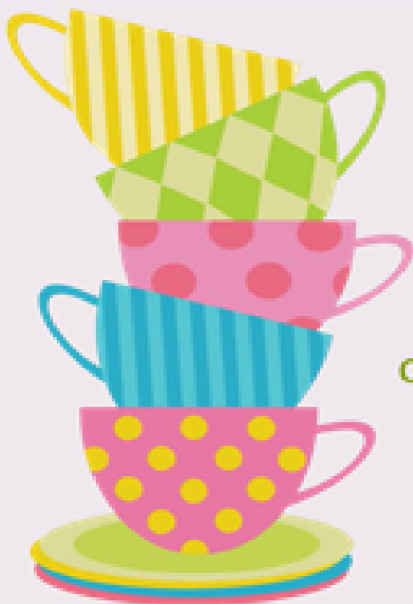
Joan Smith



Community *Tea Time*

North Melbourne Library

1st and 3rd Saturdays of month, 2pm



For more information
contact North Melbourne Library
on 01245 442292



Essex County Council

Parish Plan Update

Firstly many thanks to all those who attended the Exhibition at Melbourne Library on the 8th & 9th April and the Workshop on Saturday the 16th April. We now have the evidence led information required to complete the plan. That said there is still plenty of work to be undertaken to covert the substantial amount of information and data we now hold into a concise and hopefully interesting document. We are currently on schedule to have printed copies available in mid to late summer which will be distributed to all households in the Parish.

If you are aware of any issues which you believe may not have been voiced in the Parish Plan activity to date, or you have photographs which illustrate any of the issues raised in the Questionnaire, please contact a Parish Plan Committee member or a Parish Councillor.



Parish Plan Workshop at the URC



Parish Plan Exhibition - North Melbourne Library

Twenty three people showed an interest in either co-ordinating or helping to co-ordinate the Neighbourhood Watch Scheme in the Chignals. Unfortunately we do not have their contact details. Would it be possible to ask for anyone who showed an interest in helping with Neighbourhood Watch to send their contact details to me on email julia.emberton@sky.com or 01245443067?

New Village Hall for the Chignals & Mashbury

The village hall management committee is delighted to be able to announce that building work on the long awaited new Chignals and Mashbury village hall is now underway. A successful application for funding was made to Tarmac Landfill Communities Fund resulting in an award of £360,500.

After going out to tender the contract was awarded to Blackwater Building Services Ltd, who have extensive experience of working on village halls and community buildings. On Monday 25th April they moved in and so it's goodbye to the Second World War hut, which has faithfully served the community as our village hall since 1952.

Over the years it has been much improved and updated but it was still at its heart basically an army hut. The fact that it has been kept in full use is a credit to all those who have strived over the years to keep it functioning with the hope that one day a new purpose built hall would become a reality. Special mention goes to the small group of committee members who realised the importance to the community of the village hall and kept it functioning so that to-day we are able to obtain the funding for the new hall.

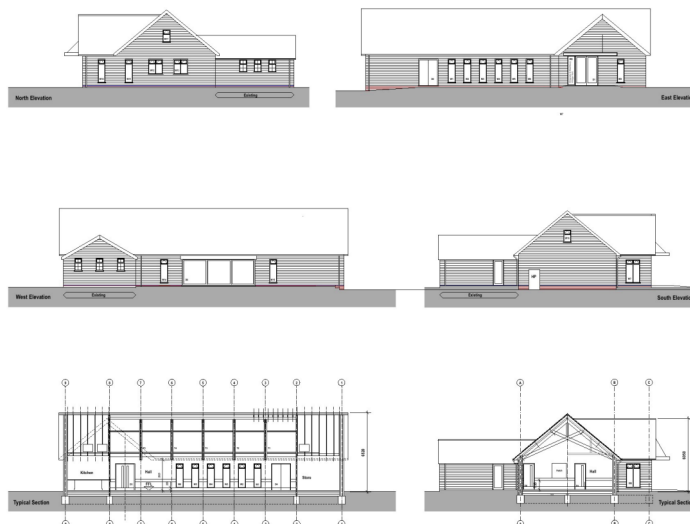
What is the new hall going to look like ?

Outside at first sight it may appear little changed - it's still the same black boarding but as it isn't timber it will not require painting. It's higher with a slate roof and taller windows.

Inside one will immediately notice it is wider (approximately 2 metres) and much higher with an open ceiling exposing timber scissor trusses and purlins which are designed to create an imposing feature of the new hall. On the west wall is a 6 metre long glassed wall, two thirds of which will open to give access on to a new, larger paved area and at the same time allowing users to fully appreciate the beautiful rural views across the Can valley. The kitchen is larger, as is the meeting room which will provide a useful area for small groups. In line with current energy conservation requirements, the hall will incorporate modern, energy efficient heating, lighting and insulation. Remaining is the recently built toilet block which was the first phase of "A Hall for All" project and designed to ultimately form part of the new hall.

Simon Tracey from Tarmac said "We are delighted to be able to support this project close to our Roxwell site. The new building will help ensure that Chignals and Mashbury Village Hall remains a hub of the community for years to come."

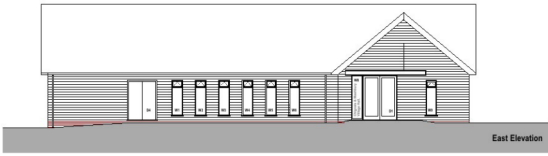
The work is due to be completed by October.



Schematics of the village hall - all elevations

New Village Hall Elevation Schematics

Section B Elevation - below



East Elevation - above



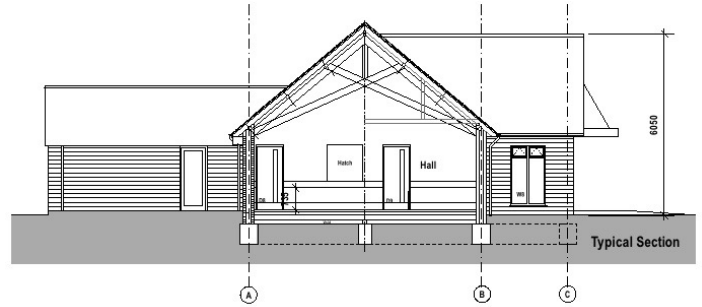
North Elevation - above



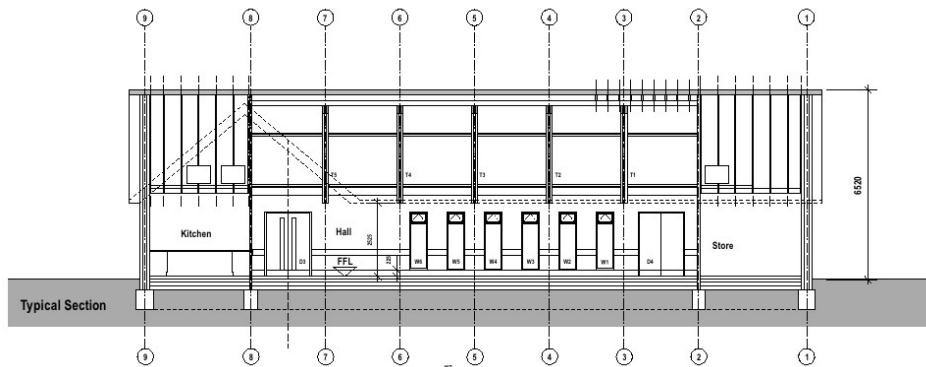
West Elevation - above



South Elevation - above



Section A Elevation - below



From the County Council



Thousands of Essex streetlights to be converted to LED

Essex County Council maintains around 127,000 streetlights and is the third largest lighting authority in the country. In 2015 the Council carried out a countywide pilot of 1,700 all-night streetlights, aimed at evaluating the energy savings, road safety and traffic management benefits of LED technology. Now the Council is investing £9.2m into converting some 19,000 of the existing all-night streetlights to LED, saving approximately £600,000 a year as a result of savings in energy and maintenance costs, as well as carbon taxes.

Beginning this year and scheduled to be completed in 2018, the LED conversion project will deliver a payback over ten years and a return on investment of 115 per cent by year 2020. Electricity consumption on the affected lighting stock is estimated to reduce by 63 per cent as a result of the LED conversion project.

LEDs are energy efficient and have lower maintenance costs, as the units have a much longer life expectancy than conventional sodium lamps that are commonly used at present. If this initial investment proves successful the Council will consider converting tranches of its part-night lighting stock in the future.

The Safer Essex Roads Partnership funds new life-saving and enforcement vehicles

You may like to be aware that the Safer Essex Roads Partnership (SERP) has funded the purchase of two new partnership vehicles, one for the Essex Air Ambulance and the other for Essex Police.

The Air Ambulance's Skoda Scout is a dedicated 4 x 4 Rapid Response Vehicle (RRV) which brings their fleet of RRVs to four, giving the life-saving Charity greater ability to reach more patients across Essex whatever the weather or time of day. It also enables the Air Ambulance to mobilise extra teams should a major incident occur.

Essex Police has received an additional unmarked high powered motorcycle equipped with the latest video recording technology. The bikes will help to combat unsafe riding and driving behaviours on Essex Roads by allowing Essex Police to detect and video record incidents of dangerous driving. The use of these bikes also enhances the ability of the Police to detect offences such as the use of a mobile phone whilst driving. The on board video evidence also provides comprehensive footage of any offence, thereby reducing potential court time. To find out more visit: www.saferessexroads.org.

Have you got our new bus pass contact number?

Those of us who hold bus passes may wish to note the telephone number to report lost concessionary bus passes changed on 18th April from an 0845 to an 0345 number, making it cheaper for customers to use.

The new number is 0345 200 0388. Use this number to report address changes or lost bus passes. Calls will be charged at a local rate. For more information visit www.essex.gov.uk/buspass

If you have any problems concerning **County Council** matters please let me know on **01245 421524** or email cllr.john.aldridge@essex.gov.uk

John Aldridge CC

May - Jun 2016

Chignal Parish Council Meeting 14th March 2016

Present:

Cllr Chris Anstey

Cllr Mr. Steve Middleditch

Cllr Miss Lynn Ballard (Chair)

Cllr Ms Linda Nelson (Vice-Chair)

Cllr Mr. Martyn Towns

In Attendance:

Mrs. Janet Mills (Parish Clerk) and 5 Parishioners

1. Apologies For Absence

Cllr Nicolette Chambers, Chelmsford City Council

Cllr John Aldridge Essex County Council

Cllr Malcolm Feltwell

2. Register Of Declarations Of Interests

None

3. The Minutes Of The Meeting 11th January 2016

The minutes were approved and signed by the Chairman as a correct record.

4. Matters Arising From The Minutes

(a) Notice Boards.

Work would begin on restoring the board on the Green as negotiations regarding the board at the "Pig and Whistle"; public house were still ongoing.

(b) The Triangle, entrance to Chignal Hall Lane

There had still been no response from the Highways Department regarding the poor condition of the triangle. It was recognised that The Highways Department would not consider this a priority. The PC would ensure that the outstanding work remained on the list of things to do in Chignal.

(c) Gardening Express

The PC had written to the Planning Department regarding permissions relating to the erection of a number of large poly tunnels. Cllr Aldridge would follow up regarding the poor state of the roads at Pieces Corner. Highways inspectors had been asked to review the site.

(d) Essex Rural Strategy

The draft strategy was expected in July. The Government had called for evidence regarding rural planning issues such as permitted development, change of use, retrospective

planning permission etc. Cllr Ballard agreed to draft a paper to be submitted by 21st April 2016.

(e) Broadband

Cllr Middleditch reported that there now was conflicting information regarding the roll-out timetable. The Chignals had been given a date between June and July 2017. It now transpired that the date had been moved to anytime between 2016 to 2019. There had been no response to three emails requesting advice from the communications officer. There was a signal 'black hole' which started at the Blue House on the boundary of the parish. This needed further investigation as it was assumed that the 60 new houses on Hollow Lane would be already connected as part of the development. Cllr Middleditch would raise the matter with Cllr Aldridge and raise the matter of roll-out timetable with Cllr Kevin Bentley the lead ECC Member. A note of thanks was given to Cllr Middleditch and Cllr Anstey for their hard work in this matter.

(f) Damaged Manhole Cover

Despite many communications with the Highways Department and ECC Members work was still to be carried out. Highways had advised in January that they were awaiting engineer reports.

(g) Chignal Smealey Passing Places

The work on the passing places had now been completed and drainage works had also been undertaken: this would help enormously during seasonal flooding. Everyone agreed that the passing places looked very good.

(h) Essex Bus Strategy

Cllrs Towns and Middleditch attended an ECC transport meeting held on 22 February. It was ascertained that there would be no changes to route 17 and route 18. It was important that residents use the bus as the service would be reviewed and may be developed in future to include a bus to Sainsburys. There was a recent initiative to provide a bus from the Chelmer Valley Park and Ride to the Broomfield Hospital. This was a trial if not used it would be withdrawn. It was agreed that the PC should promote the use of this and the Chignal services

Chignal Parish Council continued

5. Public Question Time

- a) Concerns were raised regarding the number of ready mix concrete lorries which were using the Chignal road to access the Little Hollows housing development site. The PC would write to Cllr Aldridge and Cllr Chambers regarding the matter.

6. Chairman's Report

- a) The Chairman reminded everyone regarding the forthcoming litter pick to be held on the 19 March. The details had been published in the Newsletter. Those attending should gather at the 3 Elms public house, the Village Hall or at Woodhall at 9am.
- b) The PC was to receive funds from the Community Infrastructure Levy (CIL) related to the new houses at "Little Hollows" built by Countryside Homes off Hollow Lane. The PC should receive £13,300 by April 30th 2016 for 1 year based upon the number of 133 houses which pay Council Tax. The levy would increase over the next 5 years as the development at Little Hollows became inhabited. The CIL funds could be used for a wide range of community projects. Priorities for the use of the funds would come out of the Parish Plan.
- c) Cllr Aldridge was following up on the concerns raised regarding Gardening Express.
- d) Cllr Chambers would be holding a surgery during the Coffee Morning between 11.0 am and 12.00 am at the United Reform Church on Wednesday 6th April.

7. County And City Councillors' Reports – None at this time

8. To Consider and Approve an Application to the Transparency Fund for a Parish Council Lap Top and Printer

The Clerk gave details regarding the available funding. Cllr Nelson proposed and Cllr Anstey seconded a **motion** that an application for a Laptop and Printer, to be owned by the PC, should be submitted.

9. Chelmsford Local Plan: Issues & Options Consultation Document

Due to the effective joint working with affected neighbouring parishes a strong and coherent response to the proposals to build large housing developments in the local area had been submitted. Cllr Towns and Cllr Ballard had attended the CCC Development Committee meeting on 3 March which considered a report on the Local Plan consultation and a summary of the main points raised in the representations. These echoed the submission made by the PC opposing large scale development to the west of Chelmsford, in particular, concerns related to sustainable development, pressures on infrastructure, loss of prime agricultural land and open countryside and the impact of a potential western relief road. The considerable opposition that had been voiced against development options west of Chelmsford was also noted in the report. CCC planners would be looking at the preferred development strategy during the summer months. Another meeting of the west of Chelmsford parishes was scheduled for 5 April. Cllr Ballard proposed and Cllr Middleditch seconded a **motion** to allocate £972.00 (including VAT) from Parish Council funds as a contribution towards the final costs of commissioning the Transport Study jointly with Broomfield and Little Waltham Parish Councils to assist the parishes with their formal consultation response. With no objections the motion was carried.

10. Parish Plan

The minutes to the meeting held 22nd February 2016 were received and noted. Cllr Anstey reported that the results gathered from the Parish Plan questionnaire would be presented at the North Melbourne Library on Friday 8th April from 1pm – 5pm and on Saturday 9th April between 9am and 5pm.

Chignal Parish Council continued

On Saturday 16th April between 10.30am and 12.30pm residents are invited to attend a workshop at the United Reformed Church to shape the final plan and work on the action points. The Parish Plan Committee recommended that £250 be used from the Parish Plans funds toward the cost of the Transport Study as this had aided the development of the Parish Plan.

11. Jubilee Orchard Committee

The minutes from the Sub-Committee meeting held on 21st January 2016 were received and noted. The Committee were organising a Tea Party event and Scarecrow competition with a royal theme to be held on Sunday 12th June from 3pm – 5pm to commemorate the Queen's 90th Birthday. Details of the proposed Orchard working parties would be published shortly.

12. Planning Applications: Decisions to Note

15/02060/ADV Land South of Blue Cottage, Chignal Road, Chignal Smealey. 1 no. V board sign and 2 no. flag poles. **Permitted**

15/01748/FUL: Land between Marshalls and 4 Ash Rise, Chignal Road, Chignal Smealey. Construction of a two storey detached dwelling with detached Garage. **Pending consideration**

15/02093/FUL Land at Chignal Grange, Chignal Road, Chignal Smealey. Conversion of outbuilding to form new single story retirement dwelling attached to original house with single storey side and rear extensions. **Permitted**

New Applications Considered

In order to keep the planning timetable the Parish Council considered these applications and made the following comments:

16/00064/FUL Address: Springwood, Mashbury Road, Chignal St James - Single storey rear extension and alterations to porch. **No**

Objections. The application appears to be in conformity with the Chignal Villages Design Statement, 2009 (p. 20,21) in that extensions should be sympathetic to the property and in harmony with the surroundings, not unduly affect adjoining residents and not completely fill the available space in order to retain views of the countryside beyond.

14/00976/MAT/1 to MAT/9 Western Parcel Land, North of Copperfield Road, Chelmsford - Material amendment to permission reference 14/00976/FUL (Residential development of 60 dwellings together with associated and ancillary development including access, roadworks to Hollow Lane, servicing, amenity space and landscaping.) **No Comments**

13. Representatives' Reports – the Meeting noted the following reports:

A) Playing Field - No report at this time. The meeting was advised that the playing field could be used as a car park for the Queen's 90th Birthday Tea Celebration in the Orchard on the 12th June.

B) Village Hall Liaison – No report at this time

C) Newsletter Including Website
Cllr Nelson was completing an application for the RCCE Community Magazine Competition. Cllr Middleditch would print the final submission in colour.

D) Gravel Liaison
Issues regarding the flooded bridleway had been raised with Dave Benfield who was overseeing the final site restoration works

E) Village Watch
Cllr Middleditch would be attending a Police Conference on 15 March. Cllr Middleditch had joined a Face Book page which gave information regarding a recent spate of garage robberies in the area. Cllr Middleditch would be attending a CCC emergency planning event shortly.

Chignal Parish Council continued

F) Highways

As yet there had been no reply from the Highways department to questions raised by Cllr Feltwell. Very deep ruts had appeared in the road verges outside Pieces Cottage, most probably caused by the big lorries which un-loaded there. This would be reported to Highways.

G) Footpaths/Bridleways - No report at this time.

H) Telephone Box, Chignal St. James - No report at this time.

I) Tree Warden - Cllr Ballard to attend a CCC funded tree course, 1 April.

14. Finance – The following was noted and approved

a) Balances in the accounts, as at 31 December were as follows
Current Account £7,740.11, Savings Account £3,239.33

b) Cheques issued since last meeting –

Cllr S. Middleditch: £77.09 for Parish Printing and Orchard Expenses.

Cllr L Ballard £23.95 for Queen's Commemorative Tree

Transport Study £972.00.

Clerks Wage 6 Months Net £750.48

HMRC Tax £187.60

Chelmsford DBF Newsletter £92.50

15. Correspondence for Information - None at this time.

16. Late Urgent Business – To Note - None

**17. Date of Next Parish Council Meeting, Monday 9th May 2016 at 7.30 pm,
at the United Reformed Church, Mashbury Road, Chignal Smealey CM1 4TE.**

Please that an Orchard Committee Meeting will be held at 7 pm at the same venue prior to the Parish Council Meeting.

A big thank you to everyone who took part in the village clean up for the Queen

A Right Royal Knees Up Scarecrow Competition 2016

Celebrations for the Queen's 90th birthday will be taking place at the Chignal and Mashbury Jubilee Orchard on Sunday 12th June and as part of the fun there will be a 'Right Royal Knees Up' Scarecrow Competition. To help raise awareness of the orchard celebrations we'd like all the scarecrows to be in place from Sunday 5th until Wednesday 15th June please.

We hope you will all join in and put together some suitably regal entries. You can vote for the winners at the orchard on June 12th at the photo gallery although most residents will probably have seen all the entries in the flesh (or should that be straw/) before that anyway. We'll announce the winners and award prizes on the same day. If you're having a creative block there are lots of scarecrow images online to inspire you. Some examples of last year's entries are shown below:

There's a £3 fee per entry and a minimum of 10p per vote. The cash raised from the scarecrow competition is in aid of the village hall.



St Nicholas Church - Decision Making Time

Thank you for your wonderful support!

We are now taking our next steps towards getting a toilet and servery at St Nicholas church.

We as a small church community knew that without the support of the local community we would not be able to move ahead with this project, and the community has offered help in all sorts of ways. It is disappointing that offers of building work cannot be taken up because it is a Grade II* listed building which means that we can only have approved builders to work on it.

Thank you to all of you who came to the special meeting on Monday 18th April. It was a good turnout of many key leaders in the community and we had a good debate about the pros and cons of going ahead with the facilities. The debate was lively with Linda Nelson putting the case for the proposal and Nigel Bevitt-Smith putting the case against.

Revd Rose fed back the results of the survey, which were overwhelmingly in favour of going ahead and many people offered to help fundraise. We had an excellent response of 85 questionnaires, 75 of which were in support of the project.

In the meeting there was again overwhelming support, with a suggestion that what we need to do is put together a business case for the toilets

A number of plans were discussed and options were considered. Because we had the lead taken from our vestry roof we need to get this roof replaced and have insurance money which will cover most of this cost. The plan put on the table was to have a toilet accessed from the church where the organ currently is (which would need to be moved) and a servery in the tower at the back. We also wondered if we could have a toilet with an outside door rather than knocking through a very old wall of the church, and are aware this may have VAT implications (we can get VAT refunded on some building jobs). We are wondering if we can take a phased approach to the work.

These ideas were all discussed at the Parish Church Council on Tuesday 3rd May and it was agreed that Nigel would speak to our new architects about possibilities.

There is a lot of interest and people willing to take part, but what we are missing is people willing to lead the fundraising, the grant applications, the building work and the permission we need to get from the diocese, who have to approve the work. With 5 other churches I am not in a position to lead this work personally. The good thing about this work is that it will be a project and the people involved will see specific results. There is evidence that rural churches with toilets have a much better chance of surviving and thriving. We are a small parish, and because of that people take more ownership of local assets and buildings. I would LOVE to hear from you if you are interested in taking an active part in this project especially if you are interested in leading part of it.

Someone did challenge me and ask if this was really the best use of our resources, if it was worth it for a once a month church, and I slept on it and woke convinced that this church is a gem in the community and is so important, valued by the community now and for the future. This church offers a legacy to the future and it is up to us together to make sure that it thrives and having appropriate modern facilities, while it won't ensure that on its own, it will mean that we have a fighting chance and I do believe that the process of doing this together will help us build community in a place where I know community is highly valued.

I look forward to working with you on this project. And will do my best, in partnership with you, to make this happen.

Revd Caroline Brown

St. Nicholas' Church

SERVICES IN MAY AND JUNE

Most Sundays there are services at Ford End at 9.30am and Great Waltham at 11am. There is a family service on the second Sunday at Great Waltham (May8th, June12th) and the fourth Sunday at Ford End (May 22nd, June 26th)

Wednesday 11th May 9 am Morning Prayer at St Nicholas. 30 mins

Sunday 15th May 11am Revd Rose last Communion service in the Chignals. 60 mins. We will miss her and it would be good to come and say goodbye

Sunday 29th May 10.30 am Ford End Church 70 mins – this is a joint service across all 6 churches and will be Rose's last in the parishes. Followed by lunch at 12. Please let Sheila Bearman know if you are coming to the lunch. It is a bring and share lunch so please let her know what you are bringing. You can bring a plate of food that you can share with other people. If you are not sure, Sheila will advise you. 01245 237335
sheilabearman@hotmail.co.uk

Wednesday 8th June 9am Morning Prayer at St Nicholas. 30 mins

Sunday 18th June 11am Revd Caroline will lead our Communion Service

Most Sundays there are services at Ford End at 9.30am and Great Waltham at 11am. There is a family service on the second Sunday at Great Waltham (May8th, June12th) and the fourth Sunday at Ford End (May 22nd, June 26th)

For any more details contact Revd. Caroline Brown on vicar@littleandgreat.org.uk or phone 01245 6364081

Editor:Linda Nelson
Ivy Cottage
Chignal Smealey
CM1 4TA

Tel: 01245 442625
Fax: 01245 442952

Email: chignalswe@btinternet.com Web:www.essexinfo.net/thechignals

Articles to the editor by 20th June 2016 for next publication 4th July 2016

Scarecrow Competition - Rules & Entry Form

SCARECROW COMPETITION 2016

'A Right Royal Knees Up' is the theme for this year's scarecrow competition in aid of the village hall. The 'royal' scarecrows will be in place around the Chignals and Mashbury during the run up to the Queen's 90th birthday celebrations at the Chignals & Mashbury Jubilee Orchard on Sunday 12th June. As well as being a source of much amusement to visitors, they will help to raise awareness of the Orchard event.

HOW TO ENTER

By Sunday 5th June: Your scarecrow display should be in place, on private property and clearly visible from the outside of your property and remain until Wednesday 15th.

There are two categories, one for children only and one for either families or adults. Children's entry forms should state their ages and be signed by their parents/guardians.

A completed form and £3 fee for each separate entry should be delivered to Warwicks, Chignal St James (just before the Three Elms PH). Additional entry forms can be downloaded from the village website here:

<http://www.essexinfo.net/thechignals/clubs-and-groups/village-hall/>

By Wednesday 8th June: Please email a photo of your entry to 2016scarecrowcompetition@gmail.com and include your name & contact details.

On 12th June: Vote for your favourite scarecrows during the Queen's 90th birthday celebration event at the Chignals & Mashbury Jubilee Orchard. Judging will be by public vote by means of a photo gallery and the winners will be announced the same afternoon.

RULES

1. Scarecrows can be models, dolls, teddies, soft toys etc, as well as traditional scarecrows.
2. You don't have to adhere to the royal theme but entries must be in 'good taste' and suitable for a family event.
3. Your display must be able to withstand all weather conditions and be securely anchored down.
4. Your entry must be on your private property and maintained in good order and condition throughout the display period. You must have adequate liability insurance in place for the property in case of accidents or damage to third parties. If in doubt, contact your insurers.
5. You must take all reasonable care and responsibility to ensure the safety of the exhibit and people approaching to view it.
6. General road safety must be considered when determining the placement of your display.
7. You may use props and accessories and your entry may be made up of multiple scarecrows.
8. Each vote will cost 10p minimum but feel free to donate much more! The winner in each category will be the entry that receives the most votes.

SCARECROW COMPETITION ENTRY FORM 2016

Please complete a separate form for each entry. Photocopies can be used.

Title of Entry.....

Your Name, Address & Contact Details

.....

Telephone.....

Category (please circle) (1) Family or adult/s (2) Child/ren Age/s of child/ren.....

Declaration: I confirm that I have read and understand the rules, and I confirm that I have adequate liability insurance in place for the property where my entry will be displayed in case of accidents or damage to third parties. Parent Declaration: I confirm that my child/ren have my permission to enter and I take full responsibility for their entry (as stated in the Rules).

Name:..... Signature:.....

*Please enclose £3 per entry with your form/s and deliver to Warwicks, Chignal St James (near The Three Elms PH) by Sunday 5th June.

*Don't forget to email a photo of your entry to 2016scarecrowcompetition@gmail.com by Wednesday 8th June so that we can print it ready for everyone to vote for their favourites on Sunday 12th June.