

No. 180  
March  
2016

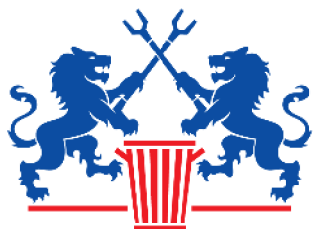
## Litter Pick Saturday 19<sup>th</sup> March at 9 am

---

Our annual Litter Pick will start from 3 venues this year, The Village Hall, Woodhall Farm, and The Three Elms Public House. Gloves, litter picks, bags, and high visibility vests will be available at each venue. If you need a bit of fresh air and exercise after the winter then please join us to help make our village a little tidier. We usually finish by about 11.00 a.m.

We look forward to seeing you. If you are not around but are prepared to go out on the previous couple of days contact me and I can drop off any equipment.

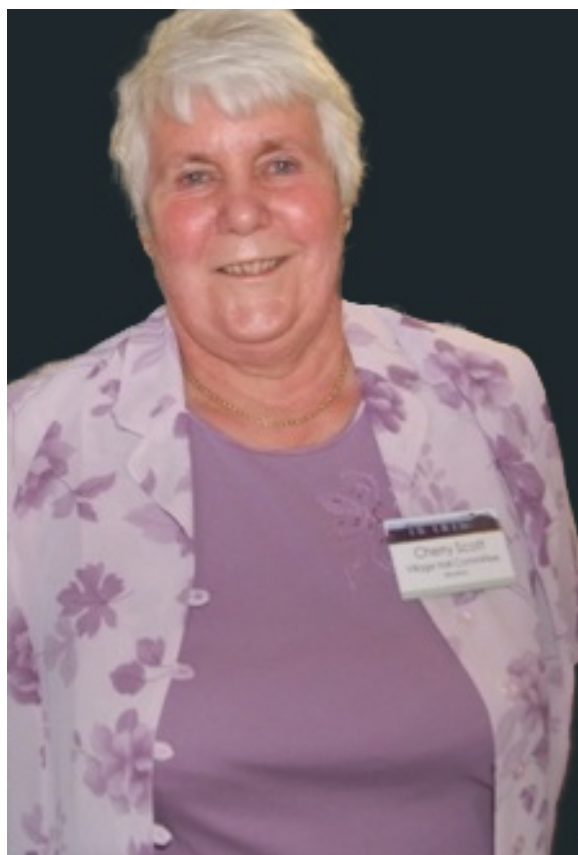
Malcolm Feltwell, Parish Councillor - 01245 441070



# CLEAN FOR THE QUEEN

## 50 Years of Service to the Village Hall

---



In April Mrs Cherry Scott will have served on the village hall committee for 50 years.

As the longest serving committee member, she has not only been the secretary since 1966, but also took on the task of caretaker in 1970.

The village hall committee would like to take this opportunity to express their thanks and appreciation for her hard work, dedication and commitment, and to recognise the valuable contribution she has made to the work of the committee and also to all those residents who use the hall. The high level of bookings creates an enormous amount of work and requires a great deal of organisation, not to mention the need for her to come out in all weathers and all hours of the day or night to prepare, clean and secure the building every time it is used. All of this is undertaken without fuss or expectation of recognition.

The help and support that Cherry has provided freely and willingly has been exceptional and the committee is greatly indebted to her.

We could not let this occasion pass without acknowledging Cherry's enormous contribution to the village hall, its committee and the community over the past fifty years.

Cherry - Our thanks for your outstanding contribution and congratulations on your 50 years of service.

# Gardening Club

---

Since the last edition of 'Chignal News', we've been entertained by two excellent speakers. Maike Windhorst, explained how she and her husband had restored a Victorian orchard at Mount Holly, Downham offering us some useful tips on growing heritage apple trees, storing the fruit and making cider. In January, Harry Brickwood from Orchard Cottage, Hockley ventured out on a very chilly evening to give us a 'tour de force' on the subject of lilies with some beautiful photos and some choice plants for our own gardens.

Continuing with the bulb theme, our February talk was by Paul Harrison on the subject of "365 days in the life of a bulb: make the most of flower bulbs in every corner of your home & garden throughout the year". Paul had problems finding the Chapel, so was late, but this gave us a chance for a good catch-up. The talk was very interesting and some people were lucky and won some plants, donated by Paul, in the raffle.

On **Wednesday 16 March 2016** we shall hear about "Propagating herbs", from Zsuzsa Serer from Herbal Haven, [www.herbalhaven.com](http://www.herbalhaven.com)

Our Annual General Meeting, Quiz and Plant Swap will be held on **Wednesday 20 April 2016**.

Everyone's welcome to come along for a sociable and entertaining evening! The meetings start at 7.30 pm on the 3rd Wednesday of the month. Would you please note that due to the closure of the village hall for improvement works, our talks will be held in **The United Reformed Church, Mashbury Road, Chignal Smealey CM1 4TE from February to April**.

In the summer months (May to July) we get outdoors and visit gardens in Essex, either in the afternoon or early evening: more details in the next issue of 'Chignal News'. We are also planning another coach trip in July to two gardens in Suffolk.

***For more information about the talks and garden visits, please contact Graham Andrews (Chairman) on 01245 442625 or Lynn Ballard (Secretary) on 01245 440880.***

## Women's Institute - by Janet Campen

---

In January we were made very welcome at our temporary venue at the United Reform Church, Mashbury, by Irene Hindmarsh who joined us for our Meeting when we played Games such as Cards, Scrabble, and enjoyed some very old games such as 'Shove Halfpenny', and Marble Bowling, brought along by Mary Wastenev.

In February we had an extremely interesting talk by Margaret Clay on 'My Life With Bees', and learned of the wonderful way the Workers and Drones look after the Queen Bee. We were able to see and sample some honey and honeycomb, and learn of the different sorts of Bees, and many Hover Flies that do such necessary work in the garden pollinating our flowers and fruit trees.

Our last meeting on 3rd March included a talk by Kayla, who is a Prison Mentor.

# Bowl's Club

---

Since the last report the League and Shield matches have been going well. In the League we managed to play the majority of our home matches before leaving the Village Hall, consequently at the end of January we are top of the League. The challenge now is to win the away games. In the West Area Shield we have progressed to the semi-final where we have to play RHP, so it will be a bit like a home match.

In the Essex Singles both John Manning and Kevin Francis are through to the Final rounds. Away from the County ten members spent a weekend at Potters resort in the open Pairs competition. Sandra & Kevin Francis reach the last eight losing to the final winners by the proverbial cigarette paper.

Christmas was celebrated in our normal enjoyable way. We commenced with the fun competition for the Christmas Shield Pairs which was won by Emma Morton and Gordon Hillyear. This was then followed by our Fish & Chips supper complete with wine and numerous deserts provided by the ladies, then finishing the evening with a round of carol singing.

We are maintaining our Club night playing at RHP Bowls Club every Monday at 7.30pm. New members still welcome, contact Gordon on 231406

## Christmas Flower Arranging Workshop

---

Our fourth annual Christmas Flower Arranging Workshop took place in the Village Hall on Friday 18 December. As in previous years Diana Barnes presented the workshop. The day commenced at 10am with Diana demonstrating three different Christmas table arrangements. Although Diana used the same materials, the three styles were different as illustrated in the photo. We then ate a sandwich lunch before making our own table arrangements. The same flowers and materials were provided for everyone and we all went home around 4pm with our beautiful arrangements to enjoy over the Christmas period. Thank you to Sandra and Lesley who worked hard in the kitchen supplying endless cups of tea. Our next workshop has been booked for Friday 2 December 2016 when we are making a Christmas wreath.



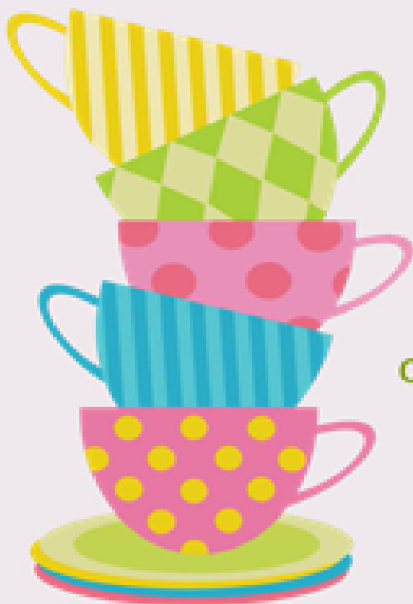




## Community *Tea Time*

North Melbourne Library

1st and 3rd Saturdays of month, 2pm



For more information  
contact North Melbourne Library  
on 01245 442292



Essex County Council



# Wassailing at the Orchard - Saturday 9th January 2016

---





# Chignal Chapel

---

It was lovely to see such a good turnout for the Village Carol Service at Chignal Chapel.

The offering designated for Children in Distress (St Lawrence Children's Hospice, Romania) amounted to £189:75. This amount was made up to £300 before being sent to them. We have had a 'Thank you' letter from them. Thank you to everyone who came and donated to this worthy cause.

Malcolm and Irene Hindmarsh

## Wine Discovery

---

The wine group enjoyed their Christmas meal in the village hall on 19<sup>th</sup> December, the hall was looking fabulous decked out in Christmas decorations – a great start to the Christmas festivities. In January Norman treated the group to an evening tasting fortified wine. Thank you to Norman and Joan for organising the Christmas meal and the January meeting.



# Why on earth count the Orchard Wildlife?

---

You may have spotted, in a report of a Chignal Parish Council meeting last year, a note from the Community Orchard that a rare moth had been seen.

The moth was a male Gypsy Moth - a handsome medium size moth with rich chestnut brown wings and lovely feathered antennae. Male is important here as the Gypsy Moth can be a serious pest in its native mainland Europe, stripping whole forests of leaves if left unchecked. Fortunately, the females don't budge more than a few metres throughout their adult lives. The males fly greater distances and occasionally (and rarely) get blown across to the UK where they can be admired but do no harm.

The moth was seen at our annual moth survey at the Orchard when a light-trap is used to attract and count night-flying moths. By doing this at different times of the summer we are steadily building up an excellent list of species for the site. We are very aware that the Orchard has the potential to provide evidence of rich biodiversity for the area and the whole of Chelmsford as well as being a terrific community place for fruit and fun. Records are sent on to the relevant Recorders.

We currently also record wild flowers, butterflies and day-flying moths, damsel flies and have started to identify Bumblebees. We note chance sightings of other creatures including reptiles and birds so were delighted when we learned that Common Lizards are often to be seen on hot days, sunning themselves on the concrete under the gate.

But we would love to have your help. If you spot anything nice when you are in the Orchard; animal, insect or plant, do make a note or take a photo if you can't identify it, and send or show it to one of the Orchard organisers.

But also, are there people reading this who are secret experts on Beetles or solitary Bees or any other form of wildlife that we have in the Orchard? If that is you and you could occasionally survey, using whatever method is suitable, please get in touch. You could help increase our current species list of 182 and rising.

Moira Tarrant & the Orchard Committee  
Email: [chignal.mashburyjubileeorchard@hotmail.co.uk](mailto:chignal.mashburyjubileeorchard@hotmail.co.uk)



## Parish Plan Update

---

Many thanks to the 195 adults and 36 children who completed the Parish Plan questionnaires in December. These numbers represent 75% and 72% of our population respectively. To give a few statistics from the results:-

The average length of time adults have lived in the Chignals is over 22 years.

Views and the Landscape together with the fact that the Chignals are rural but not remote are the most important aspects of living in our Parish.

There is a widespread dissatisfaction in the Broadband service currently on offer. Interestingly most of the Chignals are now scheduled to receive a fibre service between July 2016 and June 2017.

Nearly all of you read and value the newsletter but you would like to see more articles written by local people. Linda Nelson, the newsletter editor, will be very happy to receive suitable articles.

Most of you are concerned about heavy traffic, the lack of road maintenance and speed of traffic on our lanes.

Almost everyone considered it important to keep the open farmland between the built-up area of Chelmsford and the Chignals. There was almost unanimous opposition to large scale housing development.

We currently expect to publish the plan by mid summer but before finalising the publication we will be giving everyone a last opportunity to comment and influence the plan. To this end we will be holding a workshop on Saturday 16<sup>th</sup> April between 10.30am and 12.30pm in the United Reformed Chapel (Mashbury Road, Chignal Smealey, CM1 4TE ). It is expected that the Village Hall will not be available by then. Prior to this on Friday and Saturday (8<sup>th</sup> and 9<sup>th</sup> April) we will be displaying the results of the questionnaire at the Melbourne Library (Opposite Morrisons). A member of the Parish Plan committee will be available to answer any questions. Open times are 12.00 to 5.00pm Friday and 9.00 to 5.00pm Saturday.

**Questionnaire Results display    Melbourne Library**

**Friday 8<sup>th</sup> April 12.00 to 5.00**

**Questionnaire Results display    Melbourne Library**

**Saturday 9<sup>th</sup> April 9.00 to 5.00**

**Parish Plan Workshop        United Reformed Church**

**Saturday 16<sup>th</sup> April 10.30 to 12.30**

## From the County Council

### Supporting Syrian Refugees



Essex County Council will continue to play its part, together with our district councils, in supporting Syrian refugees coming to the UK as part of a national programme to resettle up to 20,000 of the most vulnerable families. National funding from the overseas aid budget will be used to assist local authorities to contribute to the costs of supporting refugees up to their fifth year.

In December four families arrived in Colchester, as part of the Government's commitment of welcoming 1,000 refugees into the UK in 2015. It is expected that 20 displaced families that have been identified and security checked by UNHCR, the UN's refugee agency, will be arriving in the County over the coming year. See more at: <http://www.local.gov.uk/refugees>

### Trading Standards Campaign

As part of the "Be Sure at the Door Campaign", police crime prevention officers, Age UK, Essex Community Agents and some district council community support staff will be distributing "No Cold Caller" stickers to vulnerable householders across Essex as part of a rogue trader campaign conducted. The stickers are also available from libraries across Essex.

Don't be embarrassed if you have been caught out by a rogue trader. If a trader misleads you or behaves in an aggressive way, or the trader's actions played a significant part in your decision to buy from them, new consumer rights introduced on 1<sup>st</sup> October 2014 may enable you to undo the contract and get some or all of your money back and/or get compensation for your loss or distress. Remember, it's **your** door, **your** house so **your** choice. For further information of the Campaign see <http://www.essex.gov.uk/News/Pages/Be-Sure-at-the-Door-campaign-to-crack-down-on-rogue-traders.aspx>.

Trading Standards approved tradespeople can be found at [www.buywithconfidence.gov.uk](http://www.buywithconfidence.gov.uk) or telephone 03454 040506. You can report suspicious callers or activity to Trading Standards via the helpline on 08454 040506 or to Essex Police on 101.

### Broomfield Hospital Shuttle Bus

A joint initiative between Mid Essex Hospitals and the County Council has launched in November a new half hour shuttle bus service linking Chelmer Valley Park and Ride car park and Broomfield Hospital in Chelmsford. This pilot service costs just £3 per adult passenger and includes unlimited travel for the day on all other Chelmsford Park and Ride services (Sandon and Chelmer Valley).

Free travel is open to concessionary pass holders after 9am. From Chelmer Valley, the first bus will leave at 06.37, running every 30 minutes at 07 and 37 past the hour until 17.07 with the last two buses departing at 17.47 and 18.25. The return journey from Broomfield Hospital will start at 06.50, running every 30 minutes at 20 and 50 past each hour up till 17.20. The last buses will depart at 18.00 and 18.40. The journey time is 10 minutes each way.

If **you** want to keep this unique service, I would urge all those that can to take advantage of it.

If you have any problems concerning **County Council** matters please let me know on **01245 421524** or email [cldr.john.aldridge@essex.gov.uk](mailto:cldr.john.aldridge@essex.gov.uk)

**John Aldridge CC Jan - Feb 2016**

# Chignal Parish Council Meeting 11<sup>th</sup> January 2016

---

## Present:

Cllr Chris Anstey, Cllr Mr. Steve Middleditch  
Cllr Miss Lynn Ballard (Chair)  
Cllr Ms Linda Nelson (Vice-Chair)  
Cllr Malcolm Feltwell, Cllr Mr. Martyn Towns

## In Attendance:

Cllr John Aldridge, Essex County Council  
Mrs. Janet Mills (Parish Clerk) and 13  
Parishioners

### 1. Apologies For Absence

Cllr Nicolette Chambers, Chelmsford City  
Council

### 2. Register Of Declarations Of Interests

None

### 3. Variation in the Order of Agenda Items

The Chairman proposed and Cllr.  
Middleditch seconded a motion that the  
planning application, which was to be  
considered under item 14 Late and  
Urgent business of this agenda be moved  
to Item 12 Planning Applications. With no  
objections **the motion was carried.**

### 4. The Minutes Of The Meeting 9<sup>th</sup> November 2015

With a minor amendment to item 13e  
*moving car deliberately opened the door of  
the vehicle in an effort to prevent the  
motorbike from overtaking* the minutes  
were approved and signed by the  
Chairman as a correct record.

### 5. Matters Arising From The Minutes

#### (a) Notice Boards.

Work would begin on restoring the board  
at the "Pig and Whistle"; Cllr Nelson would  
liaise with the owner of the public house.  
The board on the Green would be the next  
to restore.

#### (b) The Triangle, entrance to Chignal Hall Lane

There had been no response from the High-  
ways Department regarding the poor condition  
of the triangle. Local people considered the  
road junction to be dangerous but CPC  
had still had no answer from the Highways

Local Partnership. Cllr Aldridge agreed to  
chase County Highways to provide a response  
to CPC's request for this to be investigated.

### (c) Gardening Express

Approval had been granted to build a large  
barn type structure under permitted  
development. Work had been delayed as the  
proposed structure was not the required 25  
metres from the highway. New plans would  
need to be submitted.

### (d) Essex Rural Strategy

Councillors had responded to the consultation  
as individual residents and Cllr Ballard had  
responded on behalf of the Parish Council.

### (e) Broadband

Cllr Steve Middleditch recently attended an  
ECC meeting. The second stage of the BT  
roll- out spanning 2016 to 2019 was soon to  
begin. The roll-out timetable proposed June and  
July 2017 for connecting The Chignals.  
Whether there was a need to seek "alternative  
technology" with its associated costs was now  
questionable.

### (f) Damaged Manhole Cover

As yet there had been no work carried out.  
Councillor Feltwell would take up the matter  
with the Highways Department.

### (g) Chignal Smealey Passing Places

The reposted start date had passed and the  
work was yet to begin. Cllr Aldridge would look  
into the matter.

### (h) Essex Bus Strategy

According to the results of the recent  
consultation, most people were happy with the  
proposed changes to route 17 and route 18 and  
tenders had now gone out to operators. It was  
agreed that Cllrs Towns and Middleditch should  
attend the next transport meeting to be held on  
22 February.

### 6. Public Question Time

(a) A resident reported that due to the force of  
the water, the damaged manhole cover at  
Stevens Farm had now lifted. This was now  
considered very dangerous and concerns were  
raised regarding the impending freezing  
conditions. The matter had again been  
reported to the Highways department. An  
incident number had been given but as yet  
there had been no response.



# Chignal Parish Council continued

---

ECC Cllr Aldridge would look into the matter.

## 7. Chairman's Report

The Chairman advised the meeting as follows: There had been another episode of 'fly tipping' on the Mashbury Road. The Chairman gave a note of thanks and praise to the CCC 'Fly Tipping team for their exemplary work and quick response.

## 8. County And City Councillors' Reports Cllr John Aldridge gave the following report:

### (a) CCC Local Plan:

The ECC had no powers with regard to the proposals as set out in the CCC Local Plan. The ECC was a consultee only. Those people responding to the consultation should highlight the significant impact that large housing developments have on the existing community. This issue was often overlooked by planners. With regard to the proposed Western relief road, it was highly likely that this would be delayed as the recent government funding settlement indicated that ECC needed to find an additional £53M savings in this financial year.

### (b) Rights of Way

A great deal of work had been undertaken to draw up the contracts between ECC and CCC. The contracts were yet to be signed officially.

## 9. Chelmsford Local Plan: Issues & Options Consultation Document

The Chairman thanked Chignal residents for attending the Chelmsford Local Plan exhibition earlier in the village hall and urged them to respond individually to the consultation. The Parish Council's main concerns about this Document were outlined and it was agreed that final comments would be circulated to councillors for approval prior to submission to the City Council to meet the deadline on 21 January. It was reported that effective joint working had been carried out with affected neighbouring parishes to the west of Chelmsford, to formulate a response to the

proposals to build large housing developments in the local area. **Cllr Ballard proposed and Cllr Nelson seconded a motion to allocate £750.00 from Parish Council funds as a contribution towards the costs of commissioning a Transport Consultant jointly with Broomfield and Little Waltham Parish Councils to assist the parishes with their formal consultation response. With no objections the motion was carried.**

## 10. Parish Plan

The minutes to the meeting held 11 November 2015 were received and noted. Cllr Anstey reported that 195 completed questionnaires had been returned. This represented a 75% response rate. Results gathered included views on traffic, pot holes, road conditions and the CCC proposed housing developments. The Committee will use this evidence to produce a first draft of the Parish Plan for discussion at a public meeting in March. Further comments generated at this meeting will be incorporated in a final version to be completed in the summer. The Committee had recommended that approval be given to allocating up £250 of the Parish Plan grant to pay towards the Transport Study referred to in item 9 as the findings would provide additional evidence to inform the Parish Plan.

## 11. Jubilee Orchard Committee

The minutes from the Sub-Committee meeting held on 8th December 2015 were received and noted. The meeting was advised that despite the threat of heavy rain, the Wassailing event had been very successful this year. Maintenance of the orchard continued. An old Essex cultivar 'Queen' cooking apple tree, (developed in Billericay) had been ordered and would be planted in commemoration of the Queen's forthcoming 90<sup>th</sup> Birthday.

# Chignal Parish Council continued

---

## 12. Planning Applications

### Decisions

**14/00976/NMAT/1**-Western Parcel Land North of Copperfield Road - Proposal Non-material amendment to permission reference 14/00976/FUL (Residential development of 60 dwellings) to amend the drawing referred to in Condition 14 from no N00250-PL-001 rev C to No N00250-PL-001 rev D to substitute pumping station with sub-station. **Permitted**

**15/01531/FUL**- Agricultural Reservoir Chignal Hall Farm Chignal Hall Lane, Chignal St James, Chelmsford Essex. Proposal- Installation of floating solar PV panels on existing irrigation reservoir. **Permitted**

**14/00976/NMAT/3**-Western Parcel Land North of Copperfield Road: (Residential development of 60 dwellings) to amend the drawing referred to in Condition 14 from no N00250-PL-001 rev C to No N00250-PL-001 rev D to substitute pumping station with sub-station. **Permitted**  
**New Applications Previously Considered**

In order to keep the planning timetable the Parish Council considered the applications shown below and made the following comments:

**15/02060/ADV** Land South of Blue Cottage, Chignal Road, Chignal Smealey: 1 no. V board sign and 2 no. flag poles. **No comments**

**15/01748/FUL**: Land between Marshalls and 4 Ash Rise, Chignal Road, Chignal Smealey. Construction of a two storey detached dwelling with detached Garage. **Comments:** The footprint of the proposed dwelling appears to fill the site which is contrary to The Chignal Villages Design Statement (VDS), page 18, which refers to the area of the Parish, around Woodhall, Chignal Road in the following terms: "the extensive views of the fields to the west create an impression of spaciousness. The trees and hedges in and around the good-sized housing plots help to maintain the rural feel and the gaps between the properties emphasise the

rural location by showing that there are no buildings behind".

### **New Applications Considered at this Meeting**

The following application was received after the agenda to this meeting was posted. In order to keep the planning time table the matter was to be discussed under item 16 of the agenda Late and Urgent Business. **15/02093/FUL** Land at Chignal Grange, Chignal Road, Chignal Smealey: Conversion of outbuilding to form new single story retirement dwelling attached to original house with single storey side and rear extensions. **Comments: No Objections**

**13. Representatives' Reports** – the Meeting noted the following reports:

**A) Playing Field** - No report at this time.

**B) Village Hall Liaison**

The tender process had been extended. It was hoped that building work would begin mid February. As the new Village Hall was to be under construction in June 2016 for practical reasons, the Village Hall Committee would be arranging the Village Fete for later in the year.

**C) Newsletter Including Website**

In order to present the results of the village questionnaire, the next edition was planned for mid February. Feedback from the parish plan survey revealed that local residents valued the Newsletter and would like it to be published more often. The survey also revealed that the content on the Web site needed to be updated.

**D) Gravel Liaison**

Councillor Feltwell had undertaken a brief tour of the landfill site with the site manager, Dave Benfield. The restoration of the site had now been finished. A pump would be used for approximately 6 months to balance the water on the site. The Southern half of the site was now green. The Northern half of the site had now germinated. The Bridleway would be established after planting was completely finished. Formal invitations to visit the site were to be expected in early spring.

# Chignal Parish Council continued

---

## **E) Village Watch**

A measured approach was advised when using the neighbouring Parish Watch email alert service as several had proved to be false alarms. The Parish Plan survey had revealed that a number of residents in The Chignals would be prepared to assist with a Neighbourhood Watch Scheme.

## **F) Highways**

Concerns had again been raised regarding the Manhole cover at Stevens Farm. As yet there had been no reply from the Highways department. Ditches and gullies were again flooding this year at Rose Cottage and on the bends on the Mashbury Road. Cllr Feltwell would progress the matter with Highways.

**G) Footpaths/Bridleways** - No report at this time.

**H) Telephone Box, Chignal St. James** - No report at this time.

**I) Tree Warden** - No report at this time.

## **14. Date for the Annual Litter Pick**

The date of Saturday 19 March was noted. Cllr Feltwell would be co-ordinating the event.

**15. Finance** – The following was noted and approved

**a) Balances in the accounts**, as at 31

December were as follows

Current Account £7,740.11, Savings

Account £3,239.33

**b) Cheques issued since last meeting** -

Cllr S. Middleditch: £264.29 for Parish Plan printing costs.

**16. Correspondence for Information** - None at this time.

## **17. Late Urgent Business**

**Planning Item - 15/02093/FUL:** Land at Chignal Grange, Chignal Road, Chignal Smealey. Conversion of outbuilding to form new single storey retirement dwelling attached to

original house with single storey side and rear extensions. This item was considered at item 12 of the agenda.

Councillor Middleditch updated the meeting regarding an Emergency Planning event which he had attended.

**18. Date of Next Parish Council Meeting, Monday 14<sup>th</sup> March 2016 at 7.00pm, (please note earlier start time) at the Village Hall.**

**Followed by the ANNUAL PARISH MEETING to begin at 8.00pm**



# Local Development Plan Workshop

---



# Community Photos - St Nicholas

---



Thanks to the Three Elms  
for holding a quiz in Aid of  
St. Nicholas Church  
(Photo Left)



Christmas Eve - Crib Service at St Nicholas

great audience participation



## A Right Royal Knees Up Scarecrow Competition 2016

---

Celebrations for the Queen's 90th birthday will be taking place at the Chignal and Mashbury Jubilee Orchard on Sunday 12th June and as part of the fun there will be a 'Right Royal Knees Up' Scarecrow Competition. To help raise awareness of the orchard celebrations we'd like all the scarecrows to be in place from Sunday 5th until Wednesday 15th June please.

Last year's scarecrow competition was a big success and hugely entertaining for visitors to the villages so we hope you will all join in and put together some suitably regal entries. You can vote for the winners at the orchard on June 12th at the photo gallery although most residents will probably have seen all the entries in the flesh (or should that be straw/) before that anyway. We'll announce the winners and award prizes on the same day. If you're having a creative block there are lots of scarecrow images online to inspire you.

The boring bit is that there are a few rules, but these are all on the entry form which will be in the next (May) issue of the Chignal News, or which can be downloaded from <http://www.essexinfo.net/thechignals/assets/documents/scarecrow-competition>

There's a £3 fee per entry and a minimum of 10p per vote. The cash raised from the scarecrow competition is in aid of the village hall.



# St Nicholas Church - Decision Making Time

---

Dear Chignallers & Mashburies

The response to our survey has not only been an incredibly high number, but the vast majority of you think that facilities in the church is a good idea. Our challenge now is to decide together if we are going to make this happen or not. It is a lot of money that would take quite a bit of raising, but this could be a community activity we do together and in itself helps build us up as a community. We need people to take the lead on making the building itself happen, if that's what we decide.

After our AGM on Monday 18<sup>th</sup> April at 7pm held at URC chapel, Mashbury Road, Chignal Smealey.

We will be:

- Giving you the feedback from the survey
- Talking through the plans and some alternative plans we have come up with
- Nigel Bevitt-Smith will then say why he thinks its not a good idea
- Linda Nelson will be saying why she thinks it is a good idea.
- We will then have an open discussion
- And decide how we will move forward

The PCC, who is the decision making body of the local church, have decided they will listen to what the community wants and we know we can't do this without you. This is a key meeting and we hope as many of you as possible attend. Come and have you say and help decide the legacy we will leave for the future. There will be refreshments.

Thank you

Revd Caroline



# St. Nicholas' Church

---

## Services in Lent and Easter at St Nicholas and other churches in the group

6 March Mothering Sunday 11am St Nicholas with Revd Caroline

20 March Palm Sunday 9.30am Ford End  
11am Great Waltham

(no service at St Nicholas even though third Sunday as Easter service here next week)

Maundy Thursday Stripping of altar 7.30pm Great Waltham  
– a traditional communion in preparation for Easter

Footwashing 7.30pm Little Leighs with Revd Rose & Revd Chris Sly

Good Fri 25  
The Happening 9.45-12 Great Waltham Church

Easter activity for kids – crafts, story, song and lots of fun.

Meditation at the foot of the cross 2pm Great Leighs with Revd. Sandra

Sun 27

Easter Sunday service 11am Chignals with Revd. Rose  
Celtic service 5pm Great Waltham with Revd. Caroline

– a space to be with yourself and God followed by Simnel cake!

April 17 Communion 11am Chignals with Revd. Neil Richardson

For any more details contact Revd. Caroline Brown on [vicar@littleandgreat.org.uk](mailto:vicar@littleandgreat.org.uk) or phone 012456364081

Editor:Linda Nelson  
Ivy Cottage  
Chignal Smealey  
CM1 4TA

Tel: 01245 442625  
Fax: 01245 442952

Email: [chignalswe@btinternet.com](mailto:chignalswe@btinternet.com) Web:[www.essexinfo.net/thechignals](http://www.essexinfo.net/thechignals)

Articles to the editor by 11<sup>th</sup> April 2016 for next publication 4<sup>th</sup> May 2016

# UK Power Networks - Power Cut Support

## Would you need extra support if you had a **Powercut**?

Generally speaking, power cuts don't happen very often but if the electricity network faults or is damaged it's our job to get your lights back on quickly.

Do you or someone you know need extra support during a power cut, maybe a relative, friend or neighbour?

— If you live in this part of the UK that we cover then get signed up to our [register for free](#).

If you're a carer please apply on behalf of someone that will benefit from this.

This doesn't necessarily mean we can get your power back on more quickly but you will receive:

- ✓ A priority number that you can call 24 hours a day if you have a power cut
- ✓ Regular text message or phone updates during a power cut
- ✓ A welcome booklet
- ✓ Extra support from the British Red Cross to visit your home during an emergency (we'll check with you first)

We will not charge you for registering for the Priority Services Register or for receiving text messages that we send you.

### How to apply for extra support during a **Powercut**

- Apply online at [www.ukpowernetworks.co.uk/priority](http://www.ukpowernetworks.co.uk/priority) • Email [psr@ukpowernetworks.co.uk](mailto:psr@ukpowernetworks.co.uk)
- Complete this form, detach and post (free of charge, no envelope or stamp needed)

**Who can apply?**  
You can apply for these reasons, please specify which is most relevant

- |   |   |                                     |
|---|---|-------------------------------------|
| <input type="checkbox"/> Dependent on medical equipment | <input type="checkbox"/> Chronically ill            | <input type="checkbox"/> Disability |
| <input type="checkbox"/> Visually impaired or blind     | <input type="checkbox"/> Hearing impairment or deaf | <input type="checkbox"/> Elderly    |
| <input type="checkbox"/> Nursing or residential home    | <input type="checkbox"/> Young baby in household    |                                     |
| <input type="checkbox"/> Other _____                    |   |                                     |

Please tick this box to confirm if you would like us to share your personal data with the British Red Cross, emergency responders, your electricity supplier and others whom UK Power Networks engages to provide the service to you. UK Power Networks will hold your personal data in accordance with the requirements of the Data Protection Act.

Please tick if you need our literature in: braille  audio  or larger font  (Please tick one)

Title \_\_\_\_\_ First name \_\_\_\_\_ Last name \_\_\_\_\_

Telephone number \_\_\_\_\_ Mobile \_\_\_\_\_

Address \_\_\_\_\_

Postcode \_\_\_\_\_ Email \_\_\_\_\_

How do you want us to contact you during a power cut?  Call me  Text me  Contact someone else (details below):

Completing this on behalf of someone else? Your name \_\_\_\_\_ Your telephone number \_\_\_\_\_

Complete this form, save it and email it to: [psr@ukpowernetworks.co.uk](mailto:psr@ukpowernetworks.co.uk)