

No. 182
July
2016

The Queen's Birthday Celebration



Lynn (on Andy's shoulders) learning why its easier to attach the marquee roof before putting it up for the Orchard Queens birthday picnic (Photo on the Right)



An Orchard scarecrow (photo right)

Barbara and Janet awarding the prizes (below right)

Enjoying the celebrations (below left)



Other entries into the competitions: - Crown Prince Cake (Photo above left) and Her Majesty's Royal Scare Force - above right)

Gardening Club

We are well into summer now and our plants are flourishing after the copious amounts of rain that fell June. We have had two well attended garden visits so far and luckily the sun shone on us. We held a club supper at Elaine and Alan's home in Chignal St James on Friday 1st July, we all had a good time and it didn't rain! Thanks to everyone that helped out and especially Elaine and Alan for hosting the event.

Our next events are two visits in July: to Rayne, near Braintree and a coach trip to Fullers Mill garden in Suffolk. We welcome non-members on these trips as well so please come along and join us – you don't need to have any gardening knowledge to enjoy these beautiful gardens.

Rayne Hatch Farm, Thursday 21st July, 2.30pm

Rayne Hatch, Stisted, Braintree, Essex CM77 8BY

2½ acre garden surrounding grade II listed Elizabethan farmhouse created in past 14 years with 4 ponds. Waterside paths, ornamental bridge, well stocked herbaceous borders, woodland walk, orchard and walled garden. Mixture of formal and informal planting areas and a dry slope with rockery perennials and ornamental grasses. Also cactus conservatory and tropical plant room.

Cost: £6.00 per visitor, including tea/coffee and cake

Fullers Mill Garden, West Stow, Bury St Edmunds, Suffolk IP28 6HD and Hedgehog Nursery, Risby Barns on Wednesday 27th July.

A 7 acre garden on the banks of the River Lark created over the last 50 years by Bernard Tickner which has rare and unusual shrubs, perennials and marginal plants, with beautiful woodland and lake.

Cost: £14.00, includes coach travel and garden entrance.

This is a full day coach trip with Fourways Coaches, (pick up and parking at Good Easter).

For more information about any of the garden visits, please contact Graham Andrews (Chairman) on 01245 442625 or Lynn Ballard (Secretary) on 01245 440880, email: gardening.chignalsmashbury@gmail.com

Women's Institute - by Janet Campen

In June we were meant to have our 'Garden Meeting', unfortunately the weather wasn't kind to us but, wearing our 'Posh Frocks' we had a very enjoyable 'indoor picnic' at Anita and Michael's beautiful home, suitably decorated to celebrate the Queen's Birthday, with a well stocked Memory Table of Royal Memorabilia.

On Thursday July 7th our Speaker Carol James will be telling us of the Confessions of a Jewellery Junkie! In August we will hear from Brian Carline about The Amazing Life in School. The competition is a School Report, Real or Fictitious, which should create some interesting reading!

We will be meeting in the United Reform Church, Mashbury, 2pm for 2.30pm. Visitors Always Welcome, so do come along and join us.

Bowl's Club

We continue to meet each week for club nights at High Easter Village Hall on Thursdays from 7.30pm to 10.00pm (not Mondays as previously reported).

We played the final matches of the West Area Shield against Roxwell and on this occasion Roxwell came out on top and became the proud winners of the Shield. However, having won the League we were invited to take part in a competition against the winners of the other five Essex Leagues at Braintree. It was a very full day of bowls but very enjoyable and we finished in fourth position. Well done, everyone!

A friendly match against Black Notley has been played and despite low numbers due to holidays and illness the club won the match.

Forthcoming events include Pitch and Putt, Quiz and Strawberry Supper and friendly matches against Ford End and Tipps Cross, all of which we are looking forward to.

New members are always welcome. Please contact Gordon on 01245 231406

Wine Discovery

In May we had a presentation by Colin Legg. Colin is a wine tutor with a great wealth of knowledge of wines. He is also an excellent presenter and his talks are always interesting and informative and this occasion was no different.

We tasted six wines - three whites the first of which was a Grenache Blanc from Provence, the second a Chablis and the third a Chardonnay from Chile. The different styles of the last two were interesting as both were made from the same grape, We then had two reds a Pinot Noir from Oregon and a Carinena, Merlot and Cabernet Sauvignon blend from Spain.

We finished the evening with a rare and delicious Pedro Ximenez sherry.

In June there was a return visit from Sam Brown of Vino Vero a wine shop in Leigh-on-Sea. Sam's theme was wines for summer drinking. We began with two white wines, a Picpoul De Pinet from the Languedoc and a Viognier from Portugal and these were followed by a Rose from The Languedoc. We then tasted three reds, a Beaujolais, a Garnacha from Spain and a Malbec from Argentina.

Everyone thoroughly enjoyed the evening not least because Sam is an excellent speaker with a wide knowledge of his subject.

Norman Smith

Community Photos

Croquet Any-



Crazy June Weather causes flooding - this is Mashbury Road not a river!



The Gardening Club - Out and about

June Visit- Elwy Lodge - Cold but at least its not raining!



May Visit - Parsonage House



Reporting Road Issues

Essex County Council are responsible for the Parish roads and verges, Chelmsford City Council are responsible for sweeping the roads. Essex Police are responsible for traffic law enforcement.

Although the Parish Council report incidents that they are aware of you can help keep our parish roads safe and clean by reporting any incidents you identify to the Essex and City Councils online or by phone or Essex Police if appropriate.

Please provide as much detail as possible to identify the location. Please include

1. village, town or parish
2. name of junctions or adjacent roads
3. landmarks, such as outside no 23, house name, telegraph pole or streetlight number.
4. landmarks such as bridges, pubs, bends in the road.
5. time of incident
6. registration of vehicle if known

Fly Tipping

What can you do?

Please help combat fly-tipping by reporting it to Chelmsford City Council.

Simply contact the Customer Services Team on 01245 606606 or use the online form.

If you see someone fly-tipping make a note of:

1. The date, time and place.
2. How many people are involved and what they look like.
3. What has been tipped - how much and what it looks like.
4. The details of any vehicles involved including make, colour and registration number if possible.

Please give your contact details, in case our Officers have trouble locating the fly tip.

Remember:

- NEVER touch the waste - it may contain syringes, broken glass, asbestos, toxic chemicals or other hazardous substances
- NEVER disturb the site - there may be evidence that could help identify the fly-tippers and lead to their prosecution.

Reporting an abandoned vehicle

If you would like to report an abandoned vehicle, please fill out the online form on the Chelmsford City Website at "Report an abandoned vehicle" [https://chelmsfordgov.firmstep.com/popup.aspx/RendererForm/?F.Name=QSomh5eZGSE&HideToolbar="](https://chelmsfordgov.firmstep.com/popup.aspx/RendererForm/?F.Name=QSomh5eZGSE&HideToolbar=)

If you would prefer to write to the City Council, then please address your letter to:

The Abandoned Vehicle Officer, Public Places, Civic Centre, Duke Street, Chelmsford, CM1 1JE
The abandoned vehicle hotline number is 01245 606606 and the fax number is 01245 606681.

You do not have to give your personal details. However, a contact name and phone number is often helpful if the council have trouble finding the abandoned vehicle.

Mud, gravel, waste on road problem, street cleaning report to Chelmsford City Council

<https://chelmsfordgov.firmstep.com/popup.aspx/RendererForm/?F.Name=h4QhdzSTBKD&HideToolbar=1>

To report A Highway Problem: Essex Highways

Damaged verges, drainage problem, road lining defect, road surface issues, footpaths and bridleways are dealt with by Essex Highways.

You can report an incident on the Essex Highways

website: <https://secureweb1.essexcc.gov.uk/Highways/Report-a-highway-problem.aspx>

Potholes

You can report a pothole, a street lighting problem or ask highways about progress on a previously reported problem using your report reference number.

<http://report-it.essexhighways.org/tell-us-pothole.aspx>

If you are reporting an emergency, telephone 0345 603 7631

Essex Police

Promoting road safety and challenging irresponsible driving.

Accidents, traffic enforcement issues.

You can dial 999 in an emergency or call the Essex Police non-emergency number 101 or alternatively telephone 01245 491491.

There are also other offences that may be committed (unnecessary obstruction, criminal damage etc) speak to your local Neighbourhood Policing Team to discuss any issues.

Chelmsford Police Team members for the Chignals are:

Inspector: Andy Sawyer, Sergeants: Philip Morley and Perry Land

email

Chelmsfordcommunitypolicingteam@essex.pnn.police.uk

Address: Chelmsford police station, New Street, Chelmsford, CM1 1NF

Dates for Your Diary

Children in Need Charity Fund Raising Event

Saturday 16th July 12-3pm

To be held at

No 1 Boundary Bungalows

Mashbury Road

Chignal-St-James

Table Top Sale, Sale of Crafts & Plants, Tombola and Raffle

Tea - Coffee, Soft Drinks, Cakes and biscuits available with a donation

Community Information



SEEN HERE IN ITS NATURAL ENVIRONMENT THE LESSER SPOTTED PUMPING STATION

If you have a private pumping station at the bottom of your garden or in your street we need to know about it. You are currently responsible if anything goes wrong but the good news is that from October 2016 we will take responsibility for many private pumping stations in our region. This will include the cost to maintain and run them, but we have to find them first. If you're not sure what you're looking for our handy spotter's guide can help.

So if you have one get in touch today:

03457 145 145

Or email us at:

privatepumpingstations@anglianwater.co.uk

spotapumpingstation.co.uk



love every drop.
anglianwater

Work on the building of the New Village Hall



From the County Council

Registration services now live across the county



Residents can now register a birth, death or notice of marriage at eighteen community hubs across Essex after the final venues went live. The County Council is offering a range of services under one roof in libraries and town halls and is exploring sharing space with police, district council services and voluntary services at a number of locations to make the best use of our public buildings to save money for the taxpayer. In the sensitive area of registration services, all appointments to register a birth or death will continue to take place in a private and comfortable space. The Chelmsford library will be the new registration point for us in our area. Appointments can be booked quickly and easily online on: <http://www.essexrecordoffice.co.uk/services/registration-certificates> or by calling 0345 603 7632.

Shire Hall future secured

You may have just read that the future of one of Chelmsford's most iconic buildings looks bright after owner, Essex County Council, agreed a deal to reopen the Shire Hall which has been empty for over two years following the relocation of the Magistrates Court and a major exterior refurbishment. Following a bid process Aquila Developments, the owners of the new John Lewis store in Chelmsford, have been selected as the preferred developer of Shire Hall to secure its long term use. Detailed plans will, of course, have to go through the planning process with the City Council but the regeneration of the Shire Hall will continue to include areas for public use.

Have your say on Council services

The County Council's annual satisfaction survey has been sent out to 19,000 homes across the County. The survey is being undertaken by Qa Research, an independent research company, which has selected homes at random in order to provide a cross section that is representative of the Essex population; it also allows for the results to be collected quickly and easily. The survey covers areas such as service provision, transport and community safety and takes around ten minutes to complete, so if you receive one please try and complete it and return it as soon as possible in the freepost envelope provided.

-oOOo-

Incidentally, in my new role as Chairman of the County Council I am publishing a blog which can be viewed on <http://dnn.essex.gov.uk/chairmanblog/Home.aspx>

If you have any problems concerning **County Council** matters please let me know on **01245 421524** or email

cllr.john.aldridge@essex.gov.uk

John Aldridge CC – July 2016

Chignal Parish Council Meeting 9th May 2016

Present:

Cllr Chris Anstey, Cllr Mr. Steve Middleditch
Cllr Miss Lynn Ballard (Chair), Cllr Ms Linda Nelson (Vice-Chair), Cllr Malcolm Feltwell,
Cllr Mr. Martyn Towns

In Attendance:

Mrs. Janet Mills (Parish Clerk), 4 Parishioners,
Essex County Councillor John Aldridge

1. Election of Chairman and Vice Chairman

The Clerk asked Council Members for nominations for the role of Chairman, Cllr Towns proposed Cllr Lynn Ballard this was seconded by Cllr. Feltwell. With no objections Cllr Lynn Ballard was duly elected as Chairman. The Chairman took the Chair and asked for nominations for the role of Vice Chairman. Cllr Ballard proposed Cllr Linda Nelson this was seconded by Cllr. Anstey with no objections Cllr. Nelson was duly elected as Vice Chairman.

2. Apologies For Absence

Cllr. Nicolette Chambers, Sandra Bailey, Tony and Helen Towns

3. Register Of Declarations Of Interests

None recorded

4. Variation in the Order of the Agenda County and City Councillors Reports

A warm welcome was extended to Cllr Aldridge. In recognition that Cllr Aldridge was on a very tight time schedule Cllr Ballard proposed and Cllr Towns seconded a motion that item 7 *County and City Councillors Reports* be taken at item 4 of this agenda. With no objection the motion was carried.

ECC Cllr John Aldridge gave the following report:

a) Policing- Mr Roger Hirst had recently been elected as Police Crime Commissioner. Cllr Aldridge had written to Alan Cooke the District Commander raising a number of questions regarding the organisational restructuring, significant reduction in the number of police personnel and raising concerns that local people still did not know who their local police contact was. Details of a second meeting for collective parishes to engage with the senior Police officers, (such as the meeting held recently in Writtle) was to be arranged. Members agreed to attend.

b) Rise In Bus Fares -Consultation was soon to begin regarding the proposal that bus fares be increased by 5%.

c) The Army and Navy roundabout – the section of road was now under camera surveillance. Timings at the roundabout would be changed throughout the day in order to meet the traffic flow.

d) Drainage It was noted that some work had been undertaken to improve drainage on Mashbury Road. A note of thanks was given to Cllr Aldridge for his continued support and his attendance at PC meetings and especially for taking time to join us at this particular meeting on the eve of being appointed as Chairman of the Essex County Council.

In her absence CCC Cllr Nicolette Chambers had sent the following report:

a) CCC Annual Meeting - the annual meeting of the Council would take place in May. The role of CCC members may change. Cllr Chambers would be attending the next Coffee Morning on Wednesday 1 June at the Chignal Chapel.

b) Little Hollows – as CCC planning officers had advised that the latest proposed amendments were not sufficiently different to warrant refusal, the PC would leave it to Cllr Chambers to decide whether they should go to Committee.

5. The Minutes Of The Meeting 14th March 2016

The minutes were approved and signed by the Chairman as a correct record.

6. Matters Arising From The Minutes

(a) Notice Boards

Work had begun on repairing the notice board next to the telephone box at The Green, Chignal St James.

(b) Rural Strategy

The final draft of the Essex Rural Strategy was expected in the summer 2016. The PC had responded to the Government's Call for Evidence relating to rural planning policies, in particular how current permitted developments impacted upon rural communities.

Chignal Parish Council continued

(c) Broadband

A note of thanks was given to Cllr Aldridge who had followed up this matter. However there had still been no response from Superfast Broadband to enquiries made by the PC. The Broadband Superfast Essex web site confirmed the roll out in the Chignals but no firm dates had been given. Locally there had been investigations regarding alternative supply in particular the installation of a relay station but this was not fully supported by residents due to the complexities of gaining permissions and the personal cost involved.

(d) Community Infrastructure Levy (CIL)

The Clerk had received confirmation that £13,300 would be paid into the parish account shortly.

(e) Transparency Fund

The Clerk confirmed that a bid had been put forward to the EALC for a new computer and printer. The outcome was yet unknown. The Clerk explained that her existing computer Windows XP software and internet browser was no longer being automatically updated. It was vital that the PC upgraded its IT systems as soon as possible. Cllr Nelson proposed and Cllr Ballard seconded a motion that up to £200 be used from the PC IT budget if major difficulties arose or the EALC bid for funds did not materialise. With no objections the motion was carried.

(f) Chelmsford Local Plan

The next meeting with neighbouring parishes to the west of Chelmsford will be held on 7 June at the Chignal Chapel to discuss CCC's Feedback Documents. These will provide a summary of the main issues arising from the comments received to the Issues and Options Local Plan and its associated Sustainability Appraisal. If appropriate, a joint response to the Feedback Document will be agreed at this meeting and members will speak to this at the CCC Development Policy Committee, to be held on 9th June 2016.

(g) Gardening Express

The CCC planning enforcement manager had confirmed that the site had been inspected in March and that the erection of poly tunnels had been noted. A new planning application was due to be submitted to re-site the packing

shed, that had been approved last year as permitted development on appeal, to ensure it would be at least 25m from the highway. ECC Highways had inspected the road around Pieces Cottage but had not considered repairs to the damaged road surface and verges to be a priority. In the meantime the road verges were still being eroded by heavy goods vehicles and parked cars and mud on the road remained a problem. The PC would continue to monitor the situation.

7. Public Question Time

No questions were raised.

8. Chairman's Report

The Chairman was delighted to again take up office and thanked Members for their support upon her re-election. The Chairman expressed excitement at the new coming year, when much could be achieved for residents with the development of the Parish Plan and the impending CIL funding.

9. Parish Councils Standing Orders and Financial Instructions.

The Clerk explained that the papers were yet to be received from the EALC and for this reason the matter would be rescheduled to the July meeting.

10. Parish Council's Community Grant Policy and Procedure

The documents had been reviewed by Members. It was recognised that with the additional funds from CIL that the amount of funding available to the community would change, and this would be considered at a future meeting. Cllr Nelson proposed and Cllr Anstey seconded a motion that, at this time the policy and procedure be approved. With no objections the motion was carried.

Chignal Parish Council continued

11. Terms of Reference and Membership of the Parish Council Committees.

a) **The Jubilee Orchard Committee**-With an amendment that the Committee would meet in public once a year, (instead of twice) Cllr Feltwell raised and Cllr Ballard seconded a motion that the terms of reference and membership be approved. There being no objection the motion was carried.

b) **The Parish Plan Committee.**

Cllr Anstey raised and Cllr Ballard seconded a motion that the terms of reference and membership be approved. There being no objection the motion was carried.

c) **The Employment Committee**

Cllr Nelson raised and Cllr Ballard seconded a motion that the terms of reference and membership be approved. There being no objection the motion was carried.

d) **The Budget Committee.**

Cllr Nelson raised and Cllr Anstey seconded a motion that Committee should meet before the next full Council Meeting to be held in July. There being no objections the motion was carried.

e) **The Planning Committee**

It was noted that the Terms of Reference for this committee are being reviewed.

12. To Approve Parish Representatives

Cllr Middleditch proposed and Cllr Ballard seconded a motion that the representatives remain the same as last year. With no objection the motion was carried.

13. Jubilee Orchard Committee

The Minutes from the Orchard Sub-Committee meeting held 23rd March 2016 were received and noted. Cllr Feltwell gave a brief outline of the year's activities. In particular he outlined the arrangements for the forthcoming Queen's 90th Birthday Celebration on 12th June and the need to arrange and supply a public chemical toilet facility which would cost £95.00 plus VAT. Cllr Anstey proposed and Cllr Ballard seconded a motion £50.00 be used from Parish Council funds to help towards the costs. The Orchard Committee would fund £45.00 from its delegated budget.

With no objection the motion was carried. It was noted that the top end of the playing fields could be used on the day for car parking.

14. Parish Plan Committee

The minutes from the Parish Plan Sub meeting held 11th April 2016 were received and noted. Cllr Anstey reported that further to the display showing the results of the questionnaire survey held on 8th and 9th April at North Melbourne Library, a workshop was held on 16 April for local residents to comment on the vision and draft actions, agree key tasks and volunteer to deliver them through local groups. The outputs of the workshop would be incorporated into the draft final text along with suitable images and graphics. It was envisaged that the published Parish Plan and separate Action Plan would be ready for distribution by the end of the summer 2016. In order to pay for the printing and distribution of the publication Cllr Nelson raised Cllr Feltwell seconded a motion that the remainder of the parish plan budget £942.60 be delegated to the Committee for the rest of this year. With no objections the motion was carried.

15. Representatives' Reports were noted as follows:

A) Playing Field- the field had been cut only once so far this year. Two Croquet Games had taken place. The top end of the field could still be used for car parking.

B) Village Hall Liaison- the old hall had now been demolished. Work on the foundations for the new hall had begun. It was envisaged the new hall would be complete in October 2016.

C) Newsletter Including Website- there had been a lot of late entries this time which slightly delayed the latest publication of Chignal News.

D) Gravel Liaison – nothing new to report.

E) Community Safety - Cllr Middleditch had attended a police conference on 15th March. He raised the Parish Council's concerns regarding the lack of community policing. It emerged that community policing was not deemed a police priority. **G)**

Chignal Parish Council continued

Concerns were also raised regarding Essex Police Community Website, which was set up to give alerts regarding crimes committed in the local vicinity. There had recently been 5 cars set on fire and a murder in a neighbouring area of Chelmsford which had not been reported and there appeared to be no other local relevant information.

F) Highways – nothing new to report.

G) Footpaths/Bridleways -

Work would begin on the bridleway near Beadles Hall once the land had dried out. Cllr Nelson would contact the Essex Bridleway Association to gain publicity.

H) Telephone Box - Chignal St. James - flowers would be planted in time for the Queen's 90th Birthday Celebrations.

I) Tree Warden - the area around the Jubilee Oak Tree on The Green had been weeded and mulched.

16. Planning Applications: the following decisions were noted:

15/01748/FUL: Land between Marshalls and 4 Ash Rise, Chignal Road, Chignal Smealey. Construction of a two storey detached dwelling with detached Garage. **Remains Pending consideration**

16/00064/FUL Address: Springwood, Mashbury Road, Chignal St James - Single storey rear extension and alterations to porch.

Approved

14/00976/MAT/1 to MAT/9 Western Parcel Land, North of Copperfield Road, Chelmsford - Material amendment to permission reference 14/00976/FUL (Residential development of 60 dwellings together with associated and ancillary development including access, roadworks to Hollow Lane, servicing, amenity space and landscaping.)

Pending Consideration

New Applications Considered

In order to keep the planning timetable the Parish Council considered these applications and made the following comments:

Re-Issued Planning Application Amendments: Western Parcel Land North Of Copperfield Road Chelmsford Essex,
14/00976/MAT/1, 14/00976/MAT/2
14/00976/MAT/3. **Comments:** Whilst Chignal Parish Council would not normally comment on

minor alterations, it is considered that some of the proposed alterations on the applications listed above are not minor and have the potential to impact negatively on neighbouring properties. The alterations to elevations on 14/00976/MAT/1 & 2 which raise the ridge heights on several properties and the enlarging of the Velux roof windows on 14/00976/MAT/3 are not in the view of Chignal Parish Council, minor alterations. The applicant describes the roof light size increase from 400 x 350mm to 600 x 500mm as modest when in fact it is more than doubling the glass area. Chignal Parish Council therefore considers that these proposed non minor amendments should be either rejected by the planning officer or considered by the full planning committee.

The Council also notes that in the past week at least 13 signs have been erected on the verges around the junction between Chignal and Copperfield Road advertising the new development. These both detract from the views of the countryside and in some instances reduce the sight lines for motorists of the Chignal and Copperfield Road Junction. We are not aware that any permission has been sought allowing the erecting of these signs and therefore consider that they should be removed.

Reference: 16/00591/FUL Address: Springwood Mashbury Road Chignal St James Chelmsford - Description of works: Proposed new residential two bedroom Chalet bungalow to the side of the existing property, new vehicle access to existing property and new detached garage. **Comments:**

The site of the proposed new chalet bungalow is immediately adjacent to the eighteenth century timber framed Three Elms public house. The Three Elms is still very much a traditional country pub and contributes greatly to the rural character of the village. Its importance has been recognised through inclusion in Chelmsford City Council's Register of buildings of local value in Chignal. It is considered that the design, bulk and hard surfacing associated with this new building will have an adverse impact on the rural setting of the Three Elms.

Chignal Parish Council Continued

In addition, the proposed new dwelling would occupy a site that is too small with the result that there would be three very closely sited properties which would be out of keeping with other houses in the area. The Chignal Villages Design Statement recommends that residential extensions should not completely fill the available space. This is because it is important in a rural community to retain views of the countryside behind to avoid urbanisation of the street scene. The new garage would be particularly prominent due to its position forward of Springwood and would also detract from key views of The Elms. Two other points to note on the application form are that to our knowledge no properties in Chignal St James are connected to the main drainage network and that although trees will be affected by the proposed development, no tree survey is included in order to assess the impact. **The Parish Council recommends refusal of this application.**

17 Finance

The Clerk explained that all the accounts had been approved by the internal auditor. A note of grateful thanks was given to Mr. Graham Randall for again undertaking the work this year.

a) Year End Balances - Cllr Feltwell raised and Cllr Ballard seconded a motion that the Year End Balances in the accounts of £5,932.59 community account and £3,239.73 savings account be approved. With no objection the motion was carried. The Clerk explained that there had been a slight overspend of £57.40 against the budget of the Parish Plan Committee. Cllr Nelson raised and Cllr Anstey seconded a motion that this be retrospectively approved. With no objection the motion was carried

b) Cheques issued- It was noted that no Cheques had been issued since the last meeting.

c) Official Notice of Accounts - It was noted that accounts for the year ended 31 March 2016, would be open to the public between 6 June and 15 July. An official notice would be displayed on the notice boards and appointments to view the accounts should be made with the Clerk

d) To Approve Audit Commission Financial Return for Year Ended 31/03/2016 - the Clerk confirmed that these documents had also been subject to the approval of the internal auditor.

d1) Section One of the Return - The Clerks Signed Submission. Cllr Nelson raised and Cllr Anstey seconded a motion that this be approved. With no objection the motion was carried.

d2) Section Two of the Return. Parish Council's approval and Signature by the Chairman. Cllr Anstey raised and Cllr Ballard seconded a motion that this be approved. With no objection the motion was carried and the document signed.

18 Correspondence For Information – none

19. Late Urgent Business – There being no late and urgent business the meeting closed at 9.25pm

Parish Plan Update

We are now close to finalising the Parish Plan. Printed copies will be distributed to all households on the Parish in late summer. We should emphasise that no direct costs have been incurred by the Parish Council in the production of this document. A substantial amount of voluntary work has been undertaken by the members of the Parish Plan Committee. The majority of the costs will be print related, the questionnaires and the final plan which will be a 28 page colour brochure. This expenditure has been met from a grant from the Rural Community Council of Essex.

The Parish Plan is your vision of how you would like the Chignals to develop over the coming years. It will be used to define our vision and views and to influence local planning decisions. It also identifies over 30 current issues and in a separate document, how these will be addressed. Please find a few minutes to read the plan but meanwhile there is still time for last minute photographs to be incorporated so if you have any which may be suitable to illustrate important issues, please send them to Chris Anstey or Steve Middleditch.

The Queen's 90th Birthday Celebration in the Orchard

Despite a very wet weather forecast, the rain held off and over 50 people joined in the fun and games and shared a delicious picnic tea in the Jubilee Community Orchard on 12th June to celebrate the Queen's 90th Birthday.

A Royal theme ran through the afternoon: traditional games were given an unusual twist with 'Bowl the Corgi' and 'Pin a Tail on a Corgi' and lots of ingenuity and energy went into creating scarecrows, cakes and crowns. The winner of the 'cake shaped like a crown' competition was Samuel Scott (Photo bottom right), with Kate Middleditch coming a close second. Congratulations to Sophie Cummings for her winning entries in the children's crown making competition (Photo bottom right). We are very grateful to Barbara Miller for judging both events.

To help raise awareness of the celebrations 'A Right Royal Knees Up' scarecrow competition was held which resulted in a variety of queens and corgis dotted around the villages as well as St George, a 'Crow Bar', sentries on parade, a royal birthday cake banner and an aircraft of 'Her Majesty's Royal Scare Force'.

Judging was by public vote at the Orchard event and the runaway winner of the family/adult class with 31 votes was Julia Emberton's entry 'It Is Our Birthday'. (Photos below middle) The children only class was won by William, Lucy and Zoe Nuttall with 'Long Living Lizzie and St George the Gorgeous' (Photo below left). Prizes of wine, chocolates, sweets, colouring pencils and rosettes were kindly donated by Countryside Property. The winners also received certificates.

The plant stall organised by the Chignals & Mashbury Gardening Club did a brisk trade, thanks to Janet Campen's legendary salesmanship and expert advice and many of us also went away with armfuls of rhubarb.

The latest addition to the Orchard, an aptly named "Queen" heritage apple tree that was first grown in Billericay, received a special blessing from our local vicar, Reverend Caroline Brown: with such a good start, we can expect a bumper crop of cooking apples in the next few years.

The wildflower meadow looked spectacular – a sea of white Ox-Eyed Daisies, pink Campion, Ragged Robin, Yellow Rattle and a huge variety of grasses - and there's a lot more fruit developing on the apple trees this year.

The Orchard is a lovely peaceful place to enjoy a leisurely stroll or a picnic: it's open all the time with benches and a picnic table so do come and enjoy it!



St Nicholas Church - Saying Goodbye to Rose



Rose pictured (left) at her last service in St Nicholas' church on Sunday 15th May. It was a lovely service and we wish her well in her new ministry role in Halstead.



Photos of the blessing of the Queen's tree in the Orchard on Sunday 12th June



SERVICES IN JULY AND AUGUST

Most Sundays there are services at Ford End at 9.30 am and Great Waltham at 11 am. There is a family service on the second Sunday at Great Waltham (July 10th) and the fourth Sunday at Ford End (June 24th, August 28th)

SERVICES AT ST NICHOLAS' IN JULY AND AUGUST

Wednesday 13th July - 9 am Morning Prayer
Wednesday 10th August - 9 am Morning Prayer

Sunday 17th July 11 am Communion service
Sunday 21st August 11 am Communion service

Sunday 16th October 11 am Harvest Festival Service
in conjunction with the Community Orchard - details TBC

For any more details contact Revd. Caroline Brown on vicar@littleandgreat.org.uk or phone 01245 6364081. The churches calendar can also be viewed at http://www.greatwalthamchurch.org.uk/?page_id=40.

Editor:Linda Nelson
Ivy Cottage
Chignal Smealey
CM1 4TA

Tel: 01245 442625
Fax: 01245 442952

Email: chignalswe@btinternet.com Web:www.essexinfo.net/thechignals

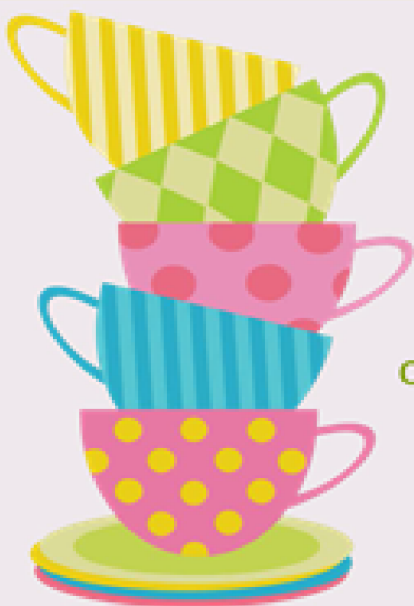
Articles to the editor by 22nd August 2016 for next publication 9th September 2016



Community *Tea Time*

North Melbourne Library

1st and 3rd Saturdays of month, 2pm



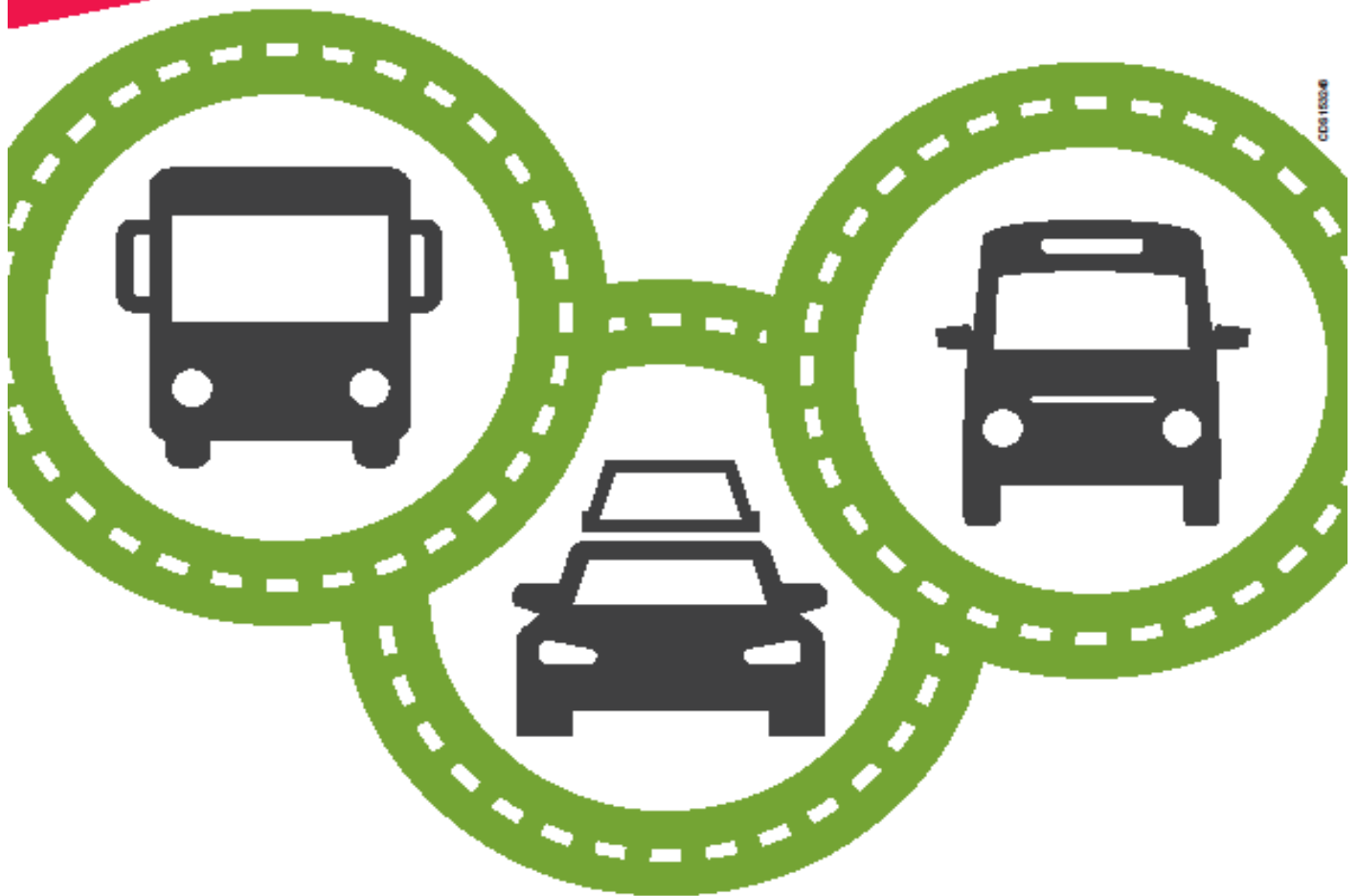
For more information
contact North Melbourne Library
on 01245 442292



Essex County Council

Passenger Transport Survey 2016

PASSENGER TRANSPORT Survey 2016



Please go online and complete this easy survey to tell us about your transport experience so that we can improve **YOUR** service.

www.essex.gov.uk/transportsurvey



Essex County Council