

# Maidenhead Junior Chess Club Tournament

Clares Court Junior Boys School, Cannon Lane, Maidenhead, Berkshire  
**Saturday 15<sup>th</sup> September 2018; 9.45a.m. - 12.30p.m. in the Sports Hall**

## **Top Section; games graded English Chess Federation Rapid Play**

15 Minutes for the game plus 5 seconds per move from the start; 5 Rounds

## **Intermediate Section; games graded English Chess Federation Rapid Play**

The top section will be divided into two sections, if there are 16 or more entries

## **Beginners Section; games graded English Chess Federation Rapid Play**

10 Minutes for the game plus 5 seconds per move from the start; 6 Rounds

No player who has won an earlier beginners section may play in this section again

Upper grading limit of about 30

## **The entry fee for ECF Junior Silver Members (with email to [nigelwdennis@btinternet.com](mailto:nigelwdennis@btinternet.com)) is: -**

£4 by cash or cheque by Wednesday 12<sup>th</sup> September

£4 by email by Thursday 13<sup>th</sup> September and BACS by Friday 14<sup>th</sup> September 12.00noon

£5 by email by Thursday 13<sup>th</sup> September and cash on the day

£8 on the day with no email by Thursday 13<sup>th</sup> September

All players should be ECF Junior Silver members. £2 Extra charge for those who are not ECF Junior Silver Members

Free ECF Junior Silver Membership until 31<sup>st</sup> August 2019 is available for junior players who have not previously been members. See: - <http://www.englishchess.org.uk/membership/joining/guide-to-joining-the-ecf/>

Please give the name of the child entering stating whether boy or girl, postal address, telephone number, age, date of birth, school and usual email address. If these details have previously been given, then only the name of the child entering need be given. Please also state the date of the event entering and whether entering the Top or Beginners section. If you have not already done so, please state that you are willing to receive emails sending results after events and sending details of future events, which will only be sent if your child has participated in a recent tournament.

For BACS payments, the Maidenhead Junior Club bank account details are: -

Barclays Bank, St Albans Branch    Sort Code 20-74-09    Account Number 43765997

Cheques payable to Maidenhead Junior Chess Club are to be posted to Nigel Dennis, Boundary House, 230 Greys Road, Henley-on-Thames, Oxon RG9 1QY.

There are trophies for first, second and third for three sections.

There are facilities available for making tea and coffee.

**Parents Responsibility;** The organisers accept no responsibility for any loss, theft or accident during an event. Adult supervision will only be provided in the tournament hall. Parents are responsible for their children during the event and agree to the terms and conditions in this entry form as a condition of entry, and that player's results and grading information may be published to the internet.

**Maidenhead Junior Chess Club Website**      <http://nigelwdennis.wixsite.com/mysite>

**Directions**      At the Maidenhead Thicket junction, where the A404(M) goes under the A4, turn towards Maidenhead along the A4 Bath Road, then right at the next roundabout into Cannon Lane. Go under the bridge, and then immediately right at the mini roundabout. Follow signs to "Clares Court Junior Boys School" into the private road to the school and park in the sports hall car park. For Sat-Nav directions, use the postcode SL6 4QQ, which directs to the entrance drive.

**White to Play and Mate in Two Moves**

Black (3 Men)



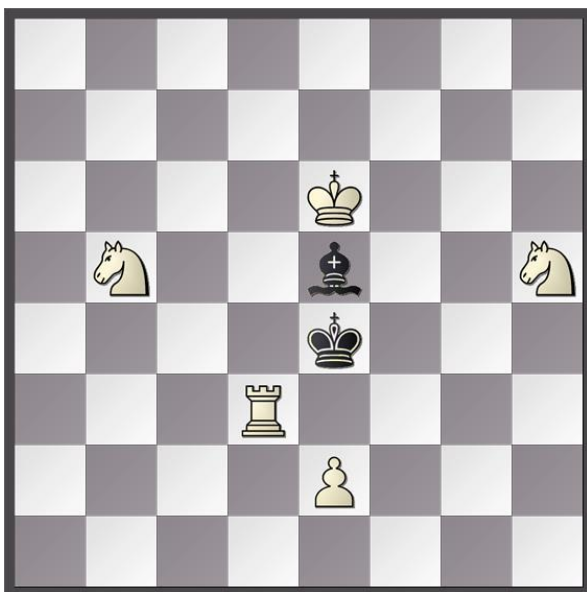
White (4 Men)

The solution will be given on the entry form for the next tournament.

**Solution to Problem on the Entry Form for the Tournament on 14<sup>th</sup> July 2018**

**White to Play and Mate in Two Moves**

Black (2 Men)



White (5 Men)

**Comins Mansfield, 1955, The Tablet**

- |                         |       |                  |
|-------------------------|-------|------------------|
| 1 Rf3                   | Block |                  |
| 1 Bc3, b2, a1, g7 or h8 |       | 2 Sg3#           |
| 1 Bd6, c7, b8, f4 or h2 |       | 2 Sf6#           |
| 1 Bd4                   |       | 2 Sd6# or Sg3#   |
| 1 Bf6                   |       | 2 Sg3 or S x f6# |
| 1 Bg3                   |       | 2 S x g3 or Sf6# |

Block is a move with no threat

S = Knight