

PREVIOUS WINNERS

Top Section

Dec Yunus Ahmed, Lower Earley
Oct Bohdan Terler, Ukraine
Sep Bohdan Terler, Ukraine
Ayan Pradhan, Lower Earley
Evan Pitts, Caversham
Aug Yunus Ahmed, Lower Earley
Jul Krish Keshari, Woodley
Samriddh Srivastava, Slough

Intermediate Section

Dec Megan Birch, Tadley
John Brown, Beckenham
Oct Hridik Nandi, Slough
Andrii Poliakov, Ukraine
Sep Rudra Shembekar, Emmer Green
Rohith Revi, Feltham
Aug Aayush Nathan, Canterbury
Alex Armitage, Holyport
Andrii Poliakov, Ukraine
Jul Otto Bryant, Oxford
Rudra Shembekar, Emmer Green
Rohith Revi, Feltham
Anna Gray, Abingdon

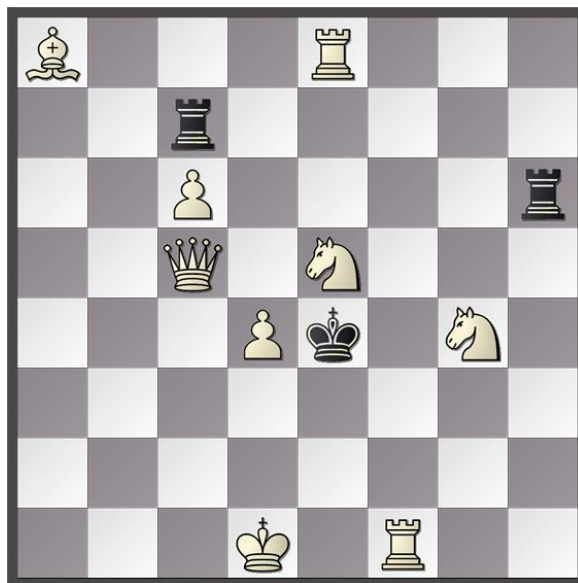
Beginners Section

Dec Siddhant Shetty, Burnham
Gabriel Dass, Maidenhead
Ojas Gupta, Maidenhead
Alexander Patimov Heredeia, Greenwich
Alexei Gresh, Wargrave
Oct Pavel Shakin, Didcot
Sep Anurag Venkataramanan, Feltham
Aug Om Nangia, Eltham
Jul Konstantin Gilbert, Marlow

TOURNAMENT PROBLEM

White to play and mate in two moves.

Black (3 Men)



White (9 Men)

English Chess Federation Membership

All participants should have ECF membership at "junior silver" or higher level

One year's free ECF junior silver membership is available for junior players who have not previously been members of the ECF. For details see: - [Membership rates & joining details – English Chess Federation](#)

Directions

The postcode SL6 4QQ directs to the long school entrance drive off Cannon Lane. At the school gate turn left and park in the sports hall car park.

MAIDENHEAD JUNIOR TOURNAMENT

Saturday 4th February 2023

Claires Court Junior Boys School Sports Hall
Cannon Lane, Maidenhead, Berkshire
Postcode for Sat Nav SL6 4QQ

**Top Section, Intermediate
Section and Beginners Section.**

All sections rated ECF Rapid Play

**Arrival Time 12.45 p.m.
Start Time: 1.00 p.m.
Finish Time: 5.00 p.m.**

**Trophies for winner, runner-up,
and third place awarded in
each section**

**Entry fee £8 by Wed 1st February
Late fees apply after this date**

**Open to all children under the age of
18 on 31st August 2022.**

Maidenhead Junior Club Website
<https://nigelwdennis.wixsite.com/mysite>

Top Section and Intermediate Section

Games rated ECF Rapid Play
All moves in 15 minutes + 5 seconds per move
Five rounds

Beginners Section

Games rated ECF Rapid Play
All moves in 10 minutes + 5 seconds per move
Seven rounds

Pairings

Pairings will be in accordance with the swiss system.
Everyone plays in all rounds.

Tie Splits will be by: -

- 1) Direct encounter
- 2) Sum of opponents scores
- 3) Play-off with 5 minutes + 5 seconds per move

Entry Fees

£8 by the Wednesday before the event
£10 on the Thursday before the event
£12 on the Friday before the event
£15 on the day

Entries on the Day should arrive half an hour before the start of play, and may miss the first round if they arrive less than 15 minutes before the start of play

Illegal Move Rule An illegal move is completed once the opponent's clock has been started. If either player has less than five minutes left on the clock and an illegal move is made, the arbiter may award the opponent two minutes for the first offence, and two minutes for the second offence. Three illegal moves by the same player when either player has less than five minutes will lead to the loss of the game.

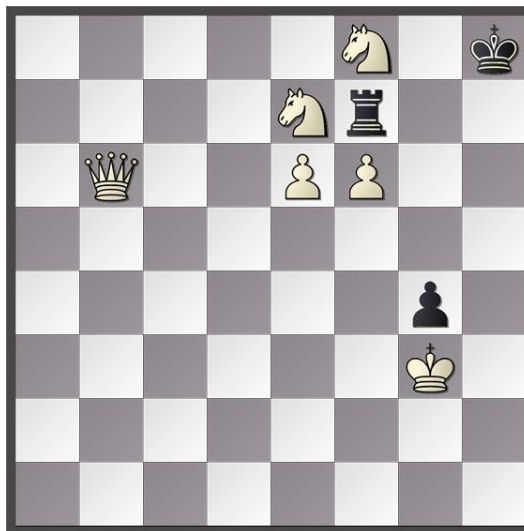
Refreshments The organisers would welcome an offer from a parent to organise refreshments

SOLUTION TO PROBLEM

For Tournament on 14th January 2023

Bohuslav Prikryl 1901

Black (3 Men)



White (6 Men)

White to play and mate in two moves

1 Qb2

1.....R x f8

1.....R x e7

1.....R x f6

1.....Rg7

1.....Rh7

2 Qh2 mate

2 f 7 mate

2 Q x f6 mate

2 f x g7 mate

2 Nfg6 mate

Parents Responsibility

The organisers accept no responsibility for any loss, theft, or accident during an event. Adult supervision will only be provided in the tournament hall. Parents are responsible for their children during the event and agree to the terms and conditions in this entry form as a condition of entry, and that player's results and rating information may be published to the internet, and that email addresses supplied may be used for circulating details of future tournaments

ENTRY DETAILS

Entry is: -

by email to Nigel Dennis
nigelwdennis@btinternet.com

with BACS payment to
Maidenhead Junior Chess Club
Barclays Bank sort code 20-74-09
account number 43765997

Other methods of payment are accepted.

Entrants to previous Maidenhead Junior Tournaments only need to give the name of the child entering with any changed details, date of event entering and preferred section

New entrants must give: -

Full names of child entering
Boy or Girl
Home Postal address
Name of school
Telephone number
Date of birth and age
ECF membership number
Email address
Date of event entering
Preferred section

Entry Fees

£8 by Wednesday 1st February

£10 on Thursday 2nd February

£12 on Friday 3rd February

£15 on the day

Additional £3 for ECF non-members

See also information about

Entries on the day
ECF Membership