

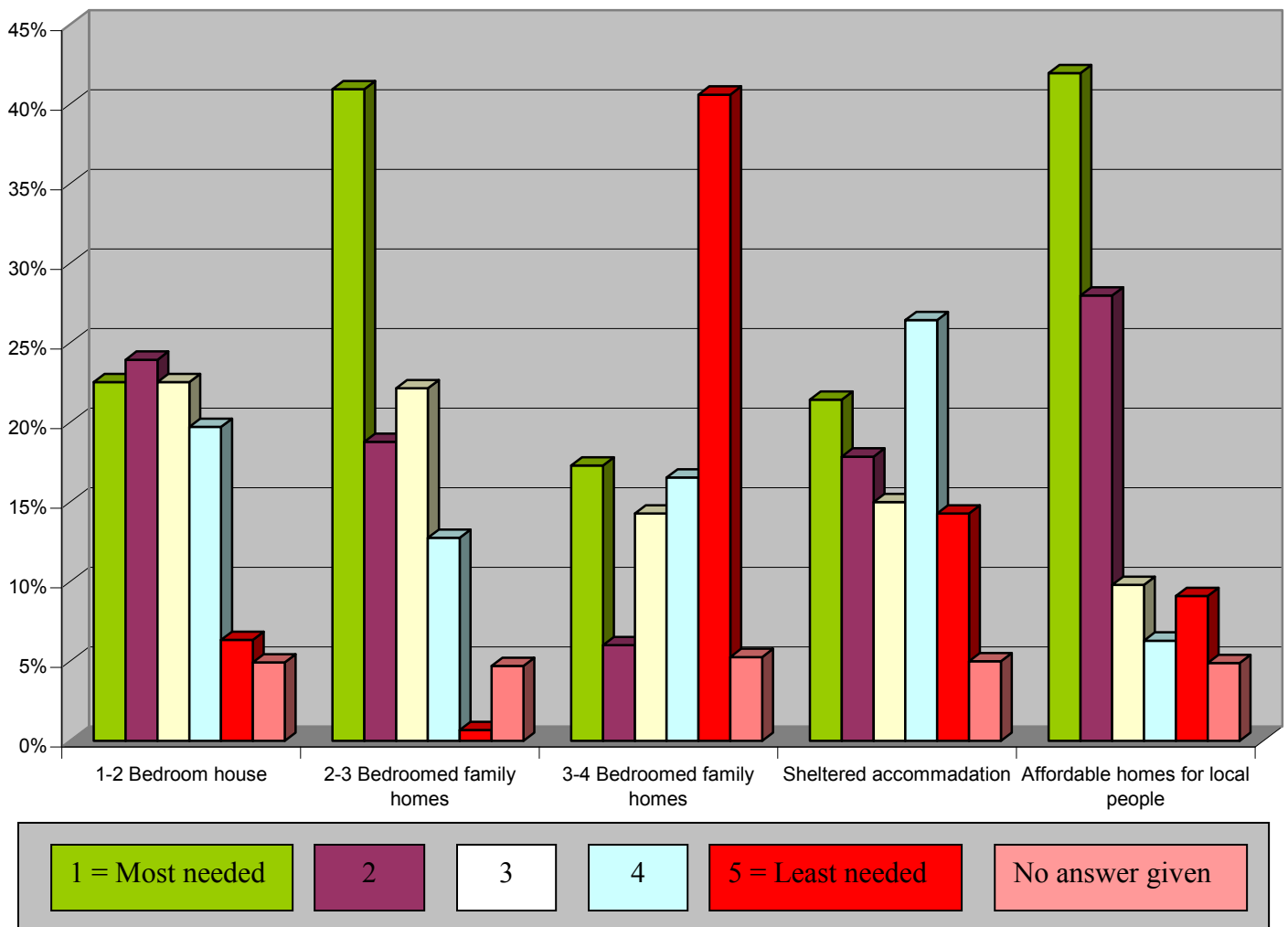


What's On?

The Newsletter of Bulmer - September 2009

(Including Bulmer St., Bulmer Tye, Finch Hill, Batt Hall, Upper & Lower Houses, Church Road and Hedingham Road).

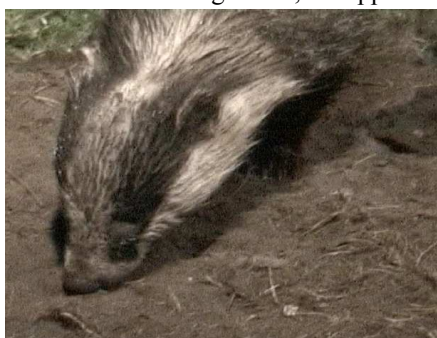
If you think new housing is required in Bulmer, what kind of housing do you think is needed?



This is the response from 66% of residents who selected new houses should be for local people, is just *one* of the many questions from the Village Design Statement (VDS) questionnaire completed earlier this year. The VDS group in conjunction with Braintree District Council (BDC) are now interpreting all the responses and creating 'guidance notes' to give advice to residents, developers & designers when altering the exterior of existing properties or building new ones. All of these will then be put on display in the Village Hall in the New Year for you to comment further, before deciding what is to be included in the final VDS, which will also be subject to approval by BDC & Bulmer Parish Council. When the date for the display has been arranged it will be advertised by distributing a leaflet to every household, and advertised on all notice boards and the Bulmer Parish Council website www.essexinfo.net/bulmer

NEIGHBOURHOOD WATCH ANNOUNCEMENT

Bulmer has been gripped by an outbreak of inter gang warfare and systematic vandalism. Perpetrated by the same lawless groups, this unwelcome development is causing concern throughout the village. Some of the residents of Vicars Orchard had a somewhat rude awakening in the early hours back in July. John Battersby was roused by some loud screaming coming from the front of his bungalow; he said he'd never heard such an awful row. Looking out, he saw two gang members embroiled in a fearsome fight. Meanwhile, at our end of The Street, two people have had parts of their gardens churned up, not to mention being used as a toilet. Going back to Vicars Orchard, the commotion went on for over 10 minutes, chasing around several of John's neighbour's gardens as well. He described the two ruffians as being thickset, with striking hairstyles of black and white stripes and was about two and a half feet long. I think this was a territorial battle between badgers from two rival setts, or a battle between two males, to determine which one was "top dog". Certainly there was no mistaking their handiwork in Maudie's and Jim's gardens, on opposite sides of Bulmer Street. Jim also found one of their "latrine pits" against his garden fence, this is the way that badgers mark their territory, and is always a giveaway.



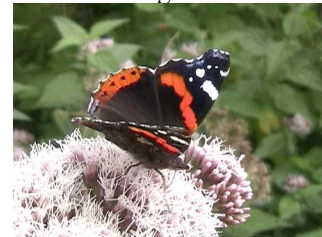
Aggressive behaviour is not confined to the mammal kingdom, on one of those occasional mornings when the garden is thronged with birds; we had amongst the usual array of tits and finches, a chiffchaff. For whatever reason, this tiny warbler took exception to a particular great tit. Other great tits were allowed to go to and fro from the feeder without harm or hindrance, but as soon as this one bird took to the air, it was harried incessantly by the chiffchaff. It followed it so closely that it often hit the bigger bird and once or twice knocked it off the feeder. Our own very aggressive robin, led me to noticing a much less common member of the thrush family in the garden, a redstart. The same shape and size as a robin, this bird was on migration, from further north, to spend it's winter in Africa. Clearly, our robin only saw it as another robin and wasted no time in giving it it's marching orders from his domain, chasing the poor thing all over the garden. There is also the still rarer black redstart. Strangely enough, until about a dozen or so years ago, we used to have almost annual sightings of these, passing through on their spring and autumn migrations.

The insect world provided this next example of aggressive behaviour. In the garden a brave, but foolhardy small tortoiseshell butterfly, had set its sights on a brown hawker dragonfly.



The dragonfly, one of our largest, was flying rather erratically around the pond. On several occasions, the small tortoiseshell took off in hot pursuit of it, crazy, and lucky not to end up as a

mid morning snack for the dragonfly, whose superior flying skills could easily have turned the table on it's floppy winged tormentor. But this has been a super year for most of our butterfly species, as I mentioned in June's "What's On", we had good numbers of the early spring butterflies and the invasion of the painted ladies at the end of May. Since then, as the summer has progressed, the meadow browns, large and Essex skippers, gatekeepers, speckled woods, red admirals and common blues, have all been around in good numbers.



Bunnies from heaven. Ivan Cansell related the following to me. He had parked up at Butlers Hall, to go into one of his farm buildings. Walking away from his car, he heard a "thump, thump" from behind him. Turning back to investigate he saw, cowering by the back wheel of the car, a half grown Rabbit, obviously badly injured. Examining the car, he found mud and some of the rabbit's fur on top of the car and on the boot lid. One big hop for a bunny? He might have thought so, but looking up from the car he saw a buzzard flying away. Clearly, this large bird of prey had bombed Ivan's car with its intended snack. One can only suppose that the rabbit had kicked hard enough to release itself from the bird's talons. Unless it was dropped intentionally, with the aim of stunning the rabbit to make it less difficult to handle? Ivan did the right thing and put the poor little creature out of its misery.



Cock Bullfinch – painted by Wendy Rowe

We have a large honeysuckle in the garden, a bit of a mixed blessing; it needs severe pruning from time to time to stop it from smothering everything else around it. But when in flower it looks fantastic, it's perfume, superior to any Paris creation, wafting out to all corners of the garden. After the flowers,

come masses of bright red berries, which are a great attraction to a host of different birds. We counted 10 different species of birds using the bush in half an hour one morning. Not all were taking the berries, but the Blackbirds and the Whitethroats were, both eating the berry whole. I was especially pleased to see a cock Bullfinch seeking them out. These brightly coloured finches didn't swallow the berry whole, they were only interested in the seed inside, totally discarding the pulpy red flesh. Needless to say within a couple of weeks the berries had all gone, by this time the blackbirds had turned their attention to our rowan, to rob us of these as well!



The common lizards introduced to Little Dean Spinney four years ago, appear to have had another successful year. George Millins surveyed the site for them on 14th August and thinks there were at least six hatches, judging by the distribution and number of juveniles that he found. They are not without their enemies, however.

About a month ago, we had parked near the Mere, in Little Cornard. A blackbird was hopping frantically about, jumping and twisting and turning, and constantly pecking at something on the ground. Whatever it was trying to eat was pretty active; binoculars disclosed it to be a lizard, which was trying to escape after each debilitating peck. I got out of the car. All that remained of the lizard was the end of its tail, which they have the ability to shed at will. This sometimes helps them to escape from tricky situations, but not this one. The tail twitched and squirmed around for about a minute after the bird had made off with its prey.

Peter Fulcher reported a dead polecat ferret, or possibly a genuine wild polecat, which he found in the entrance to the field next to Parsonage Wood on the Bulmer Brick Yard side. It is presumed that a vehicle hit it. polecats have been extinct in this area for maybe hundreds of years. In 1982 some were reintroduced into Hertfordshire from wild stock. Since then two have been found dead in Essex, the last one near Thaxted in 2002. The body has been taken away for positive identification, which, because the polecat and polecat ferret are so closely related, now involves a DNA test. If this



turns out to be a genuine wild polecat, it will be only the third record for Essex.

Peter Rowe

VILLAGE LOTTERY WINNERS

The Lottery still provides 3 lucky winners each month. Are you a member? The more members the more funds for the Village Hall and the bigger the prize! Please contact Dawn at the Post Office (376676) if you would like to join.

Month	First	Second	Third
July	Mr & Mrs D Armstrong	Mr T Davey	Mrs K Macaree
Aug.	Mrs M Dixey	Mr & Mrs R Mansfield	Mr M Crome

VILLAGE HALL NEWS

HAVING A PARTY?

Need a hall for a meeting or training sessions?
Getting married and need a venue for the reception?

Why not consider hiring the village hall for any of these events. Charges are very competitive (reduced rates for residents of Bulmer) and the hall is suitable for most functions.

If you have never been to the village hall then why not come and see what can be offered?
Interested?

Then ring 376676 or 374758
for more information.

QUIZ NIGHT

November (date to be arranged) watch out for details on parish notice boards

Rainbow Children's Centre Comes to Play in the Village !!



Toddle & Toast !!

Rainbow Children's Centre has moved into the Bulmer Village Hall every Friday morning between 9:30-11:30. The two hour session offers a wide selection of toys for children between the ages of 0 - 5 years.

There is a contribution of 50p per family for toast and tea/coffee juice. Come along and take the opportunity to have a chat and make new friends.

For further information please contact :
Louisa on 01787 223673 or
07500 864 641



SureStart

It's always lovely to come and spend some time in Bulmer. The peace and quiet, fresh air, friendly people and beautiful countryside are all a very welcome break from the Midlands inner-city lifestyle that we lead.

Now we visit with the addition of our one-year old and it appears that he similarly loves it here. However, there is even more fun for him as we discovered when we visited 'Toddle and Toast' at Bulmer Village Hall on Friday morning. What a fantastic facility. Where we live, the equivalent sessions are full of tired often broken toys, situated in busy housing areas. The ability to speak to the

people who run it is fairly non-existent and you are lucky to get a 5-minute chat. At 'Toddle and Toast' it couldn't have been more different. The toys are new, clean, varied, educational and great fun. They have really thought through the items on offer and our son had a wonderful time playing with so many new things in such peaceful surroundings.

As a bonus, the 2 members of staff knew exactly how to treat a one-year old that has just become wary of strangers. Once we got chatting, they were also able to provide helpful tips and support in our quest to get him to sleep a little longer. This type of help is so difficult to access in our home town and I wish we had this kind of facility nearby. For the price of 50 pence, our son had a great play, we all had tea and toast and I received practical and useful parenting tips. The only down side to it was we were the only ones there I would strongly encourage any parent, grandparent, relative or carer for a toddler to go to this great session so that it continues to run. If we lived here, we would certainly go every week.

Lindsay & Skipper

BULMER SKYLARKS

Many of our ladies entered into the spirit of the afternoon

when we held our "fun horse race" at our meeting in August.

Beautiful hats were worn and a prize was awarded to Kate

Thatcher

for the best hat. It proved to be a very noisy and highly competitive afternoon with a cup awarded to the winning owners in the "Bulmer Gold Cup". (Not quite Cheltenham and far less crowded!)

Following the racing we all sat down to a cream tea and a catch-up chat with old friends.

For those of you who haven't

been to our meetings, why not come along to the Village Hall on the fourth Tuesday of the month. We can arrange

transport should you need it and there are no age restrictions, it's just a relaxing afternoon for all to



enjoy a cup of tea, a chat and more.

Our next meeting will be on Tuesday 27th October when a Fire Officer will be talking about safety in the home.

If you are interested or want to know more the please ring 370845 or 374758.

PARISH COUNCIL NEWS

YOUR COUNCILLORS

Margaret Mills (Chairman)	- 01787 269377
Mike Crome (Vice Chairman)	- 01787 378155
Peter Rowe	- 01787 375935
Peter Fultcher	- 01787 269935
Stephen Morgan	- 07973 341048
Chris. Leigh	- 01787 378133
Bethan Cook	- 01787 370435

Barbara Rawlins (Parish Clerk) - 01787 370845

DATES OF FUTURE PARISH MEETINGS

All meetings are bi-monthly, normally held on the second Friday of the month in the Village Hall at 7:45pm

13th November 8th January 2010

All parishioners are welcome to attend

~~~~~

**SPECIAL ANNOUNCEMENT**

At the meeting held on the 11<sup>th</sup> Sept. Barbara Rawlins advised the Parish Council that she is to retire from her post as Parish Clerk at the next **Local elections in May 2011**.

Therefore there is a vacancy for a new clerk. Barbara has said she is happy to work alongside anyone until they have settled in and are managing the Parish affairs. This post is a part-time salaried position & any equipment required such as a computer or printer etc. will be provided.

The Council is keen that the position should be filled by someone from the Parish. If you wish to discuss the position in more detail before making an application in writing, then please contact Barbara on 01787 370845.

~~~~~

MINUTES OF THE MEETING OF THE BULMER PARISH COUNCIL HELD ON 10th JULY 2009

PRESENT: Councillors Margaret Mills (Chairman), Mike Crome, Bethan Cook, Peter Fulcher, Chris Leigh, Stephen Morgan, Peter Rowe and the Clerk.

The Chairman and Councillors gave a warm welcome to Bethan Cook as a new Member of the Parish Council. Bethan was co-opted to fill the remaining vacancy on the Council.

APOLOGIES FOR ABSENCE: Nigel Harley DC

DECLARATION OF INTERESTS: None

PUBLIC QUESTIONS: None

APPROVE THE MINUTES of the meeting held on 8th May 2009. Proposed by Cllr. Crome, seconded Cllr. Morgan.

MATTERS ARISING: None

COE'S MEADOW:

The Fun Day was sunny and warm and turned out to be a great success. The CMMC would like to thank all those who contributed to the event and of course, to those who took part. Councillors thanked the CMMC for their time and effort in putting together a very enjoyable day. There was a small loss of £22, but it was emphasised that it was not a profit-making event.

Work on clearing the pond will start Sept/Oct.

PLANNING:

Back House Croft, The Street - erection of detached dwelling and provision of new vehicular access to serve the new dwelling and existing commercial enterprise.

In spite of the fact that Mr. Rowe spoke to some members of the Parish Council prior to submitting his application, the majority of the Council found the proposed building was still too high and large for the site. Its close proximity to Back House Croft would dominate the chalet bungalow. 4

Cllrs. did not support the application. 1 Cllr. had no objections. 1 Cllr. abstained due to family interest.

Church Meadow House, Church Road - erection of rear conservatory extension. No objections from Bulmer Parish Council.

1 Finch Hill - erection of first floor side and two storey rear extensions. No objections from Bulmer Parish Council.

Parsonage Wood, Hedingham Road - A Tree Preservation Order dated 17.6.09 has been placed on this wood. The Clerk was asked to enquire if the same can be placed on Almshouse Wood, Bulmer and Butlers Wood.

Bulmer Planning Officer - Cllr. Crome - after attending a Planning Training Day held by BDC, advised the Parish Council that according to Braintree Planning Services, applications received by the Clerk should be discussed and commented on by a Planning Committee consisting of 3 or 4 members. The Parish Council did not agree with this and felt that the present system, whereby the Planning Officer investigates an application, then circulates it to all councillors for comments, was more democratic. The comments are returned to the Clerk to be collated before submitting to the Planning Services.

It was **agreed** that Standing Orders should be revised to establish the form in which the Bulmer Parish Council wishes to address planning applications.

CORRESPONDENCE & NOTICES:

1. The CMMC were not satisfied with the work done by Mortimer's in filling and seeding an area of the **recreation car park**. The Clerk was to advise Mortimer's and ask for a further inspection in Sept/Oct

2. The site of the **bus shelter at The Tye** is still being disputed with ECC mainly for the reason there is no path for pedestrians at the top of Church Road. It has previously been pointed out to County Highways that neither of the other two shelters in the village have public pathways. The Parish Council decided to seek advise from County Councillor David Finch.

3. Following our letter to the Chief Constable of Essex Police with concerns over 20 4x4 vehicles using **byway 15**, off Hedingham Road, the Parish Council felt the reply received was off-hand and discourteous. Copies of the letters were sent to David Finch for his comments.

4. In a letter to Highways Management, the Parish Council expressed concern over **byway 15**. Much of its length has high banks and is just wide enough to take a 4x4 vehicle. Horse riders and walkers are increasingly in danger of meeting such vehicles resulting in neither party being able to back up or turn. The reply received was long and detailed.

Extract.....*"It may be possible to introduce seasonal restrictions to prevent damage to flora and fauna should vehicles use the lane regularly. Even if seasonal restrictions were to be imposed; it would not exclude use by motorized vehicles outside restricted periods. However the lane does not require any action to be taken at present. In conjunction with the Highways Manager it may be possible to erect suitably worded signs at the entrance to unmade parts of the lane to advise users that the area is under scrutiny and inviting reports of any future incidents to the community police officer....."*

5. **Mr. Crumpton-Taylor** advised the Council that he was stepping down from Chairmanship of St. Andrews Primary School after 16 years in that position. He is now vice-chairman.

6. A meeting was held at Bures Hamlet village hall regarding the introduction of **wheelie bins** into this area. The outcome was that any discussions or referendums that

had taken place within villages were of no consequence as the decision had already been made by higher authorities. We are to have wheelie bins, starting October this year.

7. The Parish Council is endeavouring to have a sign erected at **Sandy Lane** advising HGV drivers that the lane is unsuitable for large vehicles. Any signs will have to be financed by Suffolk CC.

8. An Order by ECC has been issued that **Bardfield Bridge** is to have an environmental weight restriction of 7.5tonnes placed on it to prevent large goods vehicles using the route as an alternative to avoid the A131 and SudburyTown Centre.

9. Noise from a **generator** used by the tenant of the **paddock at Lower Houses** residents at Lower Houses were asked to monitor the noise of the generator, both inside and outside their homes. The result was that either it could not be heard or it was not intrusive. It was agreed that the tenant and residents would sign an agreement to the effect that they have no objection to the generator being used for approx. 20 minutes at 6.00am and 6.00pm on dark mornings.

RECEIPTS:

Braintree DC	- litter grant	£644.56
Mrs H. Chaplin	- deposit for standpipe key	£10.00
Bulmer PC	- refund of cash supplied for Fun Day	£120.00

PAYMENTS:

M. Crome	- to pay the winner of the 3rd. prize in the VDS draw	£20.00
Allianz insce	- premium	£1,552.79
ditto	- additional premium	£35.95
CMMC	- Morris dancers	£150.00
B. Rawlins	- refund costs of presentation to Ron Mansfield	£65.08
Anglian Water	- Park Lane allotments	£14.85
ditto	- Coe's Meadow (Est.)	£24.75
M. Crome	- travel expenses to meetings	£41.08
Rigby Taylor	- football net pegs	£26.00 inc VAT
RCCE	- subscription	£40.00
Chilton Office Supplies	- CMMC flyers	£173.08 inc VAT
Mortimer	- grass cutting	£1,123.55 inc VAT
EALC	- new councillor pack	£14.18
ditto	- training day	£54.00
Sudbury First Responders	- donation	£100.00
A.J. Dixey	- work on noticeboards	£97.50

WHEELIE BINS

By now all residents should have received their bin(s). The Parish Council would like to request that in order to preserve the rural aspect of the village, particularly in the conservation area, that these bins are not left on view from the roadside as much as possible, (essentially on collection days). It is appreciated that this is not always possible in some cases where there is not an access to the rear of the property other than through the house.



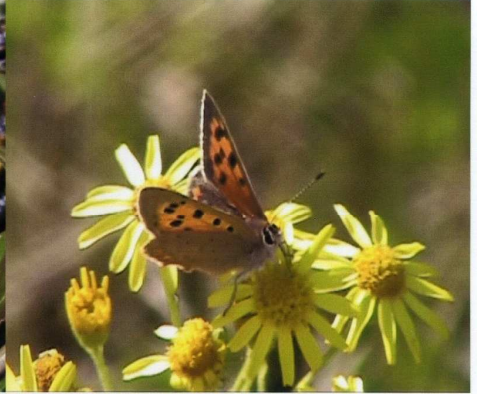
All the following have been seen in Bulmer, can you name them? Answers can be found on the back page.



1



2



3



4



5



6



7



8



9



10



11



12

This quiz was submitted by Peter Rowe

PARISH PATHS WALKS

I know that lots of residents walk our local footpaths - many of you pass my door! I would be very happy to receive reports of path problems of any kind you encounter. Thank you to all who collect litter on their walks and clear up after their dogs. I would remind those who fail to do so that allowing your dog to foul any area with public access is an offence in law and indeed very offensive to those volunteers who maintain our footpaths.



The next set of walks, given below, is suitable for most adults and accompanied children. All are about 5 miles long. Strong footwear is always advisable even though the summer months have been mud free. Dogs should be kept on a fixed lead.

Saturday 31st October at 2.30pm

BURES TO WORMINGFORD

A 5 mile walk to Wormingford and back.
Meet at Bures Comm. Centre, Nayland Road (beyond the Church).

Saturday 28th November at 10.30am

BOOT IT TO BALLINGDON

A local 5 mile walk. Meet at Bulmer Village Hall.

Saturday 26th December at 10.30am

BOXING DAY AROUND BULMER

About 5 miles but with possible shortcuts.
Meet at Bulmer Village Hall

Ring Margaret Mills 269377 for further details.

BULMER HISTORY GROUP

Village Walk, 3rd. July

The object of the walk was to look at some of the features of Bulmer's landscape and also any plants or wildlife encountered.

About 20 of us met on a lovely summers evening on Church Meadow, which we older Bulmerites knew as School Meadow. We pointed out the site of the old school and showed photographs showing the School and the meadow (then our marvellous green playground). The oldest part was built in 1840 and was extended in 1870. Only two of us present actually remembered the old school and being taught there by Miss Hawthorn & Miss Hunter. One part of the scene surviving today is the old oak, still lording it over this idyllic green space. But, what a change there was in the appearance of the ancient tree. In the photograph, taken around 1960, it had a crown of gnarled, dead branches "stag headed" and the foliage was decidedly sparse. Today, it positively breathes good health, thanks to some skilful tree surgery 20 or 30 years ago.

From the meadow we headed down the Footpath towards Upper Houses, "Green Lane" Half



way down we stopped to take in the fine views towards

Gestingthorpe and Belchamp Walter. This was also the site of the "soldiers grave". Almost certainly a grave, it disappeared when one hedge of the lane was ploughed out, fifty odd years ago.

Whether it contained human or animal remains, is still a mystery. From this point the lane goes down quite steeply, this is "Red Hill" and was, by popular legend, the site of a battle in the dim and distant past. War graves, hills running with blood, can this really be Bulmer?

We then moved on to little Dean Spinney the parish conservation area, where it was explained that this old allotment was part of the land exchanged after the enclosure of the old common land at Bulmer Tye, around 1840. This land swap provided

allotments for more outlying parts of the village, such as Upper and Lower Houses. Created in 2001, this little wildlife haven is establishing itself well, the trees and shrubs planted growing up fast. These are all native species, coming from seed or cuttings from within the village. There are many wild flowers growing



Wendy with a grass snake skin

there, but unfortunately the local rabbits regard them as a tasty hors d'oeuvres. Log piles along the fence are there to provide habitat for the Common Lizards, which appear to be thriving, having been released there in '05 & '06. George Millins, a local reptile expert, rescued them from Sudbury construction sites. A small hole, dug vertically into the hard soil, revealed where a Badger had scrapped out a Bumble Bee's nest, the bees were already reforming the nest, in the bottom of the hole. We saw good numbers of Ringlet butterflies and also a few Meadow Browns and Small Skippers.

Leaving the Spinney, we took the footpath past Brakey Hills to Jenkins Farm. Here Margaret showed us the old flint walled outbuilding where a garage business was started in the early 1900s when the Gardiners farmed Jenkins. The garage moved on to Long Melford, where it became well known.

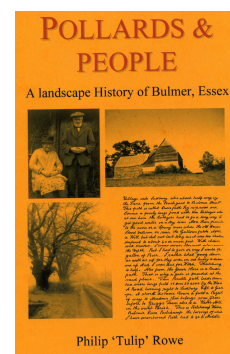
From Jenkins, we walked along Old Church Lane to the School. Returning to Church Meadow via Church Road, we kept an eye open for wild flowers on the wide verge. There were many flowers of Broomrape, albeit past their prime, these are parasitic plants, growing on the roots of clovers. The "star" of that strip of vegetation, sandwiched between the hard tarmac road and the encroaching hedge, was one pyramidal Orchid, bravely fighting for it's own space.

FORTHCOMING EVENT

Friday 16th. October, at 8 pm.

Bulmer Village Hall. Admission free, refreshments.

Robin Rowe will give an illustrated talk on his new book "Pollards and People". This book reveals yet more fascinating memories of long gone Bulmer, as written down by his grandfather, Philip "Tulip" Rowe (born 1871). Robin has skilfully edited Tulip's reminiscences, to construct a tour around the village,



using Tulip's own words. Tulip describes not only the landscape, but all aspects of village life, which he experienced well over a hundred years ago. It promises to be a most interesting evening. All welcome. **The book will be on sale on the night at the discounted price of £7.**

~~~~~

**PARISH PATH WALKS - SUMMER 2009**

As the hot weather continued into the summer so did the parish path walks. Our walk in June saw the few who hadn't worn shorts wishing they had as the afternoon grew



hotter and hotter on our walk around Middleton and Henny. We walked paths that gave us the views across the Stour Valley that never fail to impress. From Ryes Lane through the golf course we could see for miles and evidence of the hot weather was all around. The trees were still a lush green but the grasslands were looking brown and parched with the soil beneath our feet baked solid like concrete.

Conditions remained throughout when in July we left Bulmer to visit Borley, Brundon and Ballingdon. This was another glorious walk using mainly field paths and walking around Sudbury's water meadows. A favourite place of



mine to walk we also used paths we seldom use. A familiar route we did take however saw us revisiting the masses of swans at Brundon by the old water mill. Even with the great number of swans the water was still clear enough to watch the fish basking in the warm waters before we headed off to Ballingdon. Here we joined the paths of the old railway track to take the path back up to Finch Hill.

August Bank Holiday Monday saw us return to Henny but finding our way back via Twinstead on this occasion. Although late August the summer had shown no signs of leaving just yet, or could those dry leaves falling from the trees in the breeze be the first signs of Autumn. No matter how close Autumn is the sun beat down as we left Butlers Hall Farm for Watery Lane crossing field paths and the

main road before reaching Dove House Farm. No obstacles blocked our paths but the donkeys still insisted following us to the last stile. We then reached the lower pastures of Fenn Farm where we admired some dragonflies on the fencing, but no sheep or cow. Nearing Twinstead church we also admired a rather distinct



apple tree. Each branch boasting a different variety of apple. Winding our way on other paths I'd not tread before our trail round Twinstead was completed by crossing the fields of Twinstead's riding school taking us back to Butlers via Long Gardens and the edges of Wickham St Paul. Many thanks to Margaret for her time and efforts to get more of us out there to admire the scenery.

~~~~~

The picture below of 'Fuchsia & a Holly Blue' was drawn & painted by our very own resident artist - Wendy Rowe, this is just one of many examples of her excellent work.



QUIZ ANSWERS	
1 Spotted Flycatcher	2 Spindleberries
3 Small Copper Butterfly	4 Privet Hawkmoth
5 Field Poppies	6 Orange Tip Butterfly
7 Burying Beetle	8 Germander Speedwell
9 Fly Agaric Toadstool	10 Little Egret
11 Cinebar Moth Caterpillars	12 Goldfinch

The **next edition** of 'Whats On?' will be in **Black & White** & published around Christmas 2009, could I please have all pictures, articles, events etc. by the **15th December**. Either by email to mike@mcrome.fsnet.co.uk or snail mail to 6 Vicars Orchard.