



# What's On?

The Newsletter of Bulmer - March 2013

(Including Bulmer St., Bulmer Tye, Finch Hill, Batt Hall, Upper & Lower Houses, Church Rd & Hedingham Road).

View in colour at [www.bulmeressex.co.uk](http://www.bulmeressex.co.uk)

## At Last, an Official Speed Limit for the A131 at Bulmer Tye!

After many years of discussions, traffic surveys and letter writing to Essex Highways with the support of our County Councillor David Finch, Highways have finally agreed to proceed with a speed limit of 50 mph on all the shaded area on this map. Your council asked for 40mph. However this means a speed, which can be enforced, it is not an advisory limit and is lower than the current statutory 60mph.



In addition to this, Essex Highways have also agreed to implement a 40mph speed limit (our request was for 30mph) through Batt Hall to protect residents when many vehicles are parked along this stretch of Sudbury Road and will provide a buffer zone to the 30mph limit at Ballingdon.

Precise dates of implementation are not known at this stage, but it is expected to be within 2013.

**Mike Crome (Chairman Bulmer Parish Council)**

**COLLECTORS EXHIBITION**

On Sunday 2<sup>nd</sup> June in Bulmer Village Hall at 10:30am till 4pm. Refreshments and Raffle in aid of Hall funds. For further information and to book a stall, phone Alan Dixey 312915.



~~~~~

**VILLAGE LOTTERY WINNERS**

The Lottery still provides 3 lucky winners each month. It is a vital fundraiser for your village hall. Are you a member? The more members the more funds for the village Hall and the bigger the prizes!

| Month       | First               | Second            | Third             |
|-------------|---------------------|-------------------|-------------------|
| <b>Dec.</b> | Mrs E Carpenter     | Mr & Mrs C Barton | Mrs E Wenborne    |
| <b>Jan.</b> | Mr & Mrs A Burbidge | Mrs S Herring     | Mr & Mrs P Owen   |
| <b>Feb.</b> | Mrs Barrel          | Mr D Neil         | Mr & Mrs B Smiles |

Please support your village hall and contact Dawn at the Post Office (376676) if you would like to join the village lottery.

~~~~~

**BULMER STITCH & SEW CLUB**

Our club is now held in the Village Hall on the 1<sup>st</sup> Monday of each month from **2pm till 4pm.**



We are a happy crowd with plenty of chatting going on. We pay £1 per month, this goes towards the rent, tea and biscuits. For more information, ring Margaret on 312915 or Jean on 476828.

~~~~~

**VILLAGE HALL NEWS**

Our first committee meeting of the New Year was very lively and productive and we were able to set a programme of events for the year. We hope you will be able to support some of them as we have tried to organise something for everyone.

The first event, **on 26th April**, will see the return of an old friend, Edward Crighton from Lacey, Scott and Knight. He will be holding an **"Antiques Roadshow"** and, after a short insight into the world of antiques, will speak on items brought in and give a valuation on them.

Please bring one item for valuation to enable him to speak to everyone. Tickets £4.00 to include light refreshments are available from Maggie on 374758.

**A Bygones display** will take place in the Village Hall **on 2nd June**. This will coincide with **Open Gardens** being organised by St Andrew's Church and will be a good opportunity to have an interesting and enjoyable afternoon out. Refreshments will also be served in the Hall. For more information please ring Margaret on 312915.

Later in the year a **Barn Dance** is planned for **13th September** followed by a Quiz Night in October.

We are planning to hold a **Christmas Fayre on 30th November** and although this sounds a long way off, tables are already being booked. If you would like to book a table to sell your crafts, produce etc or would like more information please ring Ann on 373451.

Finally, **The A.G.M.** of the Village Hall will be held on **17th May**. Please, please come along to show your support, give us your ideas or just give us your moans and groans. Your opinions matter to us.

~~~~~

**BULMER SKYLARKS**

We ended our year with a most enjoyable Christmas lunch at Bulmer St Andrew's School. We were



served by very polite children and following our meal were entertained with music and singing by the charming pupils. We would like to thank the Headmistress, all the staff and children for making the afternoon so special they were wonderful.

We were not sure whether to hold our first meeting of the New Year as it coincided with the heavy snowfall we experienced in January. However we decided to go ahead and what a surprise we had when almost all of our members arrived despite the cold.

It was well worth the effort as our speaker, Peter Fulcher, gave an extremely interesting account of his experiences of being a Gamesmaker at the London Olympics. Over the next few months we will be welcoming a variety of speakers. On 26th March Phyllis Felton will be speaking about the history of St Leonards Hospital; we will be welcoming a representative from M.A.G.P.A.S Air Ambulance

on 23rd April and on 28th May the topic will be "Foundlings" with Ruth Millar. The 25th June will see us enjoying a summer party and on 23rd July we will be discovering about the versatility of Lavender.

If you are interested in joining or want to know more please contact either Barbara on 370845 or Maggie on 374758.

~~~~~

**PARISH PATHS WALKS**



Deciding where to walk months in advance has its problems! The walk in December involved a path closure due to an unsafe bridge over the River Stour. On January's jaunt over to Belchamp Walter we had to change the route, as we did not have a boat! (See the photograph). February required a route change to avoid overhead cable work causing path closures. I hope that the next few months bring fewer problems. Perhaps we will be blessed with less mud. Strong footwear, however, is always a good idea. Adult accompanied children are most welcome as are well-behaved dogs on short fixed leads. Here are the next three walks.

**Sunday 5th May at 2.30pm**

*"Across the Brook"*

About 5 miles  
Meet at Village Hall

**Bank Holiday Monday 27th May at 10.30am**

Woods & Meadows in *"Lamarsh & Alhamstone"*  
An opportunity to see lots of wild flowers. About 5 miles.

Meet at Lamarsh Church.

**Sunday 30th June at 2.30pm**

*"Six parishes: One Walk"*

About 5½ miles.  
Meet on Plough Green, Bulmer Tye.  
Further details for all walks call Margaret Mills on 269377.

~~~~~

**BULMER OPEN GARDENS WEEKEND  
1ST & 2ND JUNE**

**Saturday 1st June 2 - 6pm  
Sunday 2nd June 2 - 6pm**

An interesting mixture of gardens will be open - large & small, and of different styles. Plants will be available for sale at Bulmer Tye House and other gardens; teas will be served at some venues.

Admission to all the gardens will be by programme - these will be available at £3 from mid - May from various sources:

- Margaret Mills 269377
  - Liz Fulcher 269935
  - Sandy Maynard 269285
  - Other Church Council members
- At gardens throughout the weekend.

*All proceeds from this event will be in aid of St. Andrew's Church, Bulmer*

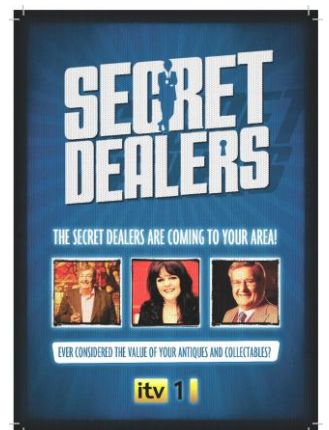
~~~~~

**ITV1's SECRET DEALERS**

We are looking to film in the Essex area.

**Secret Dealers** sees three rival antique dealers doing battle in private homes for items they can sell. The competing dealers tour the house inspecting everything of value. The owners are then faced with a bonanza of surprise valuations and cash offers on some of their most prized (or not so prized) possessions. They can either accept or reject the offers and the owners must then face the choice between sentimental attachment and the chance to make a fast buck.

In the past some of our contributors have given the proceeds from the show to charity and I thought perhaps your parishioners might be



interested in applying if they have antiques or collectables.

If you know of anyone with antiques or collectables that they would consider selling then we would love to hear from them!

Call Neil, my number is **0117 970 7674** if you have any questions or would like to chat more about the programme. The email address is [secretdealers@rdftelevision.com](mailto:secretdealers@rdftelevision.com).

~~~~~

### **BULMER NATURE DIARIES**

In early December we had a build up of lapwings feeding on the backfield. Starting with just a dozen, the numbers built up until the middle of the month, when a count revealed 295 birds. By then we had entered a period of very severe weather and they were finding it very difficult to feed, the frozen ground too hard for them to penetrate in their search for worms and other invertebrates, but they still stayed on. When a sudden thaw came, they still stayed around, but spread themselves thinly over surrounding fields.

The lapwings were often joined by black headed and common gulls during the day, in fact the gulls are not above



stealing a meal off the lapwings, ambushing them as soon as they extract a hard won worm from the soil. This usually resulted in an aerial chase, the lapwing twisting and turning, with the gull in hot pursuit. I think that the lapwing often managed to swallow the worm in flight, but if it landed with it, the gull usually gained its ill gotten prize.

The frost having departed, we seemed to have nothing but rain up till Christmas, with everywhere waterlogged. At the end of the month we walked across to Belchamp, the brook was right up to the underside of the little bridge, and the meadow on the other side half under water.

On New Years Day our plant group met for our traditional plant survey at Melford. This year we recorded 29 different species actually flowering, more than any other year so far. The showiest was the Winter heliotrope, one of the few we found that should actually be on flower at this time of year. This was growing on The Green, in front of Melford Hall.

Having had Lapwings thronging to the back field in December, January saw a large mixed flock of Fieldfares and starlings, about 400 and 200 respectively, with the odd redwing dotted amongst them. Another bird, which spent a lot of time foraging in the field, was a buzzard. I guessed that it was feeding on worms etc, small morsels for a large raptor. Graham Martin, who said that he often had a buzzard picking up worms behind him as he was ploughing the fields of Goldingham Hall, confirmed my guess. He said they did him a favour, as they scared off the gulls, which otherwise white-washed the tractor cab! Another raptor, although somewhat smaller than a buzzard, which has also been supplementing its diet with worms, is a female kestrel. It favours perching high on one of the little oaks just down the field. From there, it sails down on to the field to snatch up its prey. Kestrels have got incredibly keen eyesight and can spot anything moving, however small.

A fair amount of earthmoving has been carried out on the building plot next to us. As a result of this soil upheaval, the moles that had been living there for years have become evacuees. Unfortunately they have sought asylum



on our front lawn, which has more escape tunnels than Colditz! When you look at a mole it's a real digging machine, the front feet are just like shovels, shown in the picture. The snow in January alerted me to the presence of a rabbit in the back garden. I followed its tracks to a hitherto unnoticed hole in the fence, which I promptly blocked. The fields stretching across to the Belchamp Valley always betray the presence of any birds or animals, as they are thrown into stark relief against the blanket of snow. This is when one can usually pick out two or three hares with the telescope, but this time I only spotted one hare, despite looking for them three or four times. I hope this is not a sign that their numbers are dwindling.

Walking up North Street (Sudbury) on 31st. Jan, I was pulled up in my tracks by some wonderful music -- no, not the accordion playing busker -- but the sweet unmistakable fluting of a blackbird. My ears led me into the North Street Parade and there he was perched on a rooftop, singing with real gusto. Normally if you are lucky enough to hear one at all this early in the year, it will usually be the more subdued sub song, a

sort of practice session. It was a glorious reminder that Spring is around the corner, (somewhere).

On an awful afternoon in February the children's Wildlife Watch Group met outside the Mill Hotel. It was wet and miserably cold, but the one



youngster, plus grandma, who did turn up were treated to an unforgettable sight. On the edge of the mill pool, just yards from where people and dogs were passing, was a kingfisher. As we watched, it plunged in to return with a sizeable fish. This it proceeded to thrash against a post, before attempting to swallow it. The fish just wouldn't go down, so it repeated the tenderisation process but still without success. That little bird must have spent 3 or 4 minutes doing this before it finally managed to swallow it's catch. It then retired to an overhanging willow, where I managed to get this picture.

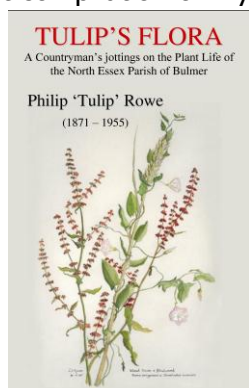
More good sightings in February were three siskins on our bird feeder on the 16th, 17th & 28th. One was a male in full breeding plumage, a mixture of bright green and almost jet-black.

I thought Spring had sprung, when Wendy & daughter Caroline reported a few celandines in flower by the side of the Upper Houses Lane on the 3rd. March. Now nearly three weeks later, I realise that I was somewhat in error about Spring, it has definitely un-sprung, to icy January! The picture is Wendy's watercolour.



To end, I must plug the latest compilation of my Grandfather Philip "Tulip" Rowe's writings.

"Tulip's Flora" contains his observations on the flowers, plants and trees that he found growing in the fields and woods of Bulmer in the late 19th and early 20th centuries. He describes the use of plants and their fruits in the



cottage kitchens, to supplement the often-meagre diets and the age-old herbal remedies. The multiple uses of various timbers in manufacturing items for both domestic and agricultural use, is another topic. Copies of "Tulip's Flora" at £7.50 can be purchased from 01787 375935.

**Peter Rowe**

(Ed. The book is also illustrated with 14 colour prints of Wendy's excellent Flora paintings).

~~~~~

**PARISH COUNCIL NEWS  
YOUR COUNCILLORS**

|                               |                |
|-------------------------------|----------------|
| Mike Crome (Chairman)         | - 01787 378155 |
| Peter Fulcher (Vice Chairman) | - 01787 269935 |
| Stephen Morgan                | - 07973 341048 |
| Chris. Leigh                  | - 01787 378133 |
| Bethan Cook                   | - 01787 370435 |
| Rose Raymond                  | - 07813 205743 |
| Ken Hill                      | - 01787 464651 |

Hannah Fraser (Parish Clerk) - 01787 374310

**DATES OF FUTURE PARISH MEETINGS**

All meetings are bi-monthly, normally held on the second Friday of the month in the Village Hall at 7:45pm

|                                  |                          |
|----------------------------------|--------------------------|
| 10 <sup>th</sup> May (Incl. AGM) | 12 <sup>th</sup> July    |
| 13 <sup>th</sup> September       | 8 <sup>th</sup> November |

All parishioners are welcome to attend and there is a 15 minute slot for questions from the floor.

**Minutes of the Parish Council Meeting  
Held on 8<sup>th</sup> March 2013 at the Village Hall,  
at 7.45pm**

*These draft minutes are unapproved until the next meeting on Friday 10<sup>th</sup> May 2013*

**Present**

Cllrs. Crome, Fulcher, Hill, Leigh, Morgan, Raymond; Mrs H. Fraser (Clerk); 2 members of the public.

**1. Apologies for Absence**

Apologies had been received from Cllr. Cook, CCllr. Finch and Mr P Darlington.

**2. Declarations of Interest**

Cllr. Morgan declared an interest in the matter regarding the potholes in Blacksmith's Lane.

**3. Public Question Time**

- A parishioner asked whether the post-flood debris outside No.10 Church Road could be cleared. The clerk was asked to contact Highways to action this.

**4. Approval of the minutes of the meeting held on Friday 11<sup>th</sup> January 2013**

Acceptance of the minutes was proposed by Cllr. Leigh and seconded by Cllr. Morgan; the vote was unanimously in favour. The minutes were duly signed by the Chairman.

## 5. Matters Arising

- i. Internal auditor: the clerk is to follow up a local recommendation.
- ii. New salt bin for Ryes Lane: The parish council would have to purchase, maintain and place on private land. Cllr Raymond is to canvas local residents.
- iii. New strimmer: the receipt for the new strimmer can be submitted for a P3 grant. Cllr. Raymond proposed and Cllr. Morgan seconded that a new strimmer was purchased within a budget of £450-690. All were in favour. Cllrs. Morgan and Crome will proceed with the purchase.
- iv. Dog fouling signs on permissive path: the clerk is awaiting written permission to put them up.
- v. Potholes in Blacksmith's Lane: the majority of these have recently been filled in. Thanks were given to Cllr. Finch for his support in this matter.
- vi. Facebook page: There was no report on this item, since Cllr. Cook was unable to attend. In the meantime, Cllr Crome would have a look at creating a parish page.

## 6. County/District Council Updates

An update from CCllr. Finch had been circulated prior to the meeting. An update from DCllr. Swift would be circulated after the meeting.

## 7. Coe's Meadow report

Cllr. Leigh gave a verbal report. The path edges had been cleared by Cllrs. Crome, Fulcher and Mr Derek Smith. The clerk was asked to write a letter of thanks to Mr Smith. Mortimers will spray weedkiller on the path edges when the weather allows. CMMC are still awaiting the decision on the county grant for the special needs swing. The Fun Day is planned for Sunday 9<sup>th</sup> June. There will be a work party on Saturday 16<sup>th</sup> March 10am-12noon. The Stour Valley Trust is to cut the wildflower meadows on 25<sup>th</sup> September, for which the parish council will make a donation after the next financial year has commenced.

- i. Grass cutting: Mortimers have been confirmed for this coming year; Wingspan is preparing a quote for next year. It was suggested that Peter Rowe was asked to inspect the Church Meadow wildflower areas to ascertain what the cutting programme should be.

## 8. Allotments report

Cllr. Morgan had circulated a written report (appendix B). A further allotment has been let, but not including the big fruit trees. Drainage is not too bad at the moment. Some rubbish has been left by Mr Smith on his vacant allotment: Cllr Morgan will ask other tenants if they can reuse any items. It was suggested that there could be a monthly rota for strimming.

- i. Water usage and billing: the cost of water used, split equally between keyholders would result in a charge of £2.50 each. In this time of austerity it was felt unfair that all villagers are currently paying for the water, and that such a charge would mean more careful use of water. The clerk was asked to draft a letter to allotment holders, and it was agreed that this charge would be included on the next invoices, in September 2013.
- ii. NALC template and payments: the template confirmed that it was impractical to charge in advance for allotments, as only ¼ of the year's cost could be charged in advance at any time. It also advised that rents for residents and non-residents should be the same; this will be adjusted narrowing the difference over future price reviews. The councillors felt that since there had been a recent update of the allotment tenancy agreement, there should be no changes now, and it was agreed to keep the template on file for future re-consideration.
- iii. The allotment holder who is 6 months late with rent has been sent a final demand, and Small Claims Court proceedings will start on 14<sup>th</sup> March if no rent is received by that date.

## 9. Clerk's report

The Clerk circulated a report (appendix C), including task progress and timesheet.

- i. The CiLCA course application has been submitted, and the Essex Clerks Training Bursary form was signed and dated. The course will involve 28 hours study in Great Dunmow in addition to the Clerk's current hours. Cllr. Fulcher proposed and Cllr. Leigh seconded that the clerk be paid for these hours. All were in favour.

## 10. Planning

Cllr. Leigh gave an update:

- The Bungalow, The Street - the corresponding S106 donation will contribute towards play equipment, but has not yet been processed.

## 11. Receipts and Payments

- i. A balance in hand sheet had been circulated (appendix D). The cheques were signed.
- ii. The capital investments were reviewed. The form for the signatories for the Scottish Widows account was completed.
- iii. BALC renewal: despite the need to be careful with spending, the chairman proposed that this subscription of £18 was renewed, as BALC is the main voice for responding to the changes for the Parish Support Grant. Cllr. Fulcher seconded this motion and all were unanimously in favour.

Response to Parish Support Grant proposal: the Chairman suggested that rural areas had been 'hard done by' as the original idea of the grant was to compensate rural areas for lacking services. He suggested a bigger adjustment should have been made in favour of rural parishes, and that the name should be retained, as otherwise the original concept of the grant would be lost. He proposed that the council's response was along these lines, this was seconded by Cllr. Morgan and the vote was unanimously in favour.

Cllr. Fulcher supplied a response for the clerk to send back to National Grid, which reiterated the council's support of undergrounding. There is currently also a consultation regarding the siting of a transformer sub-station between the woods near Butlers Hall. Whilst screening of the proposed siting was adequate, the Councillors' view was that it could be avoided altogether if the 132kv was undergrounded from another sub-station reasonably close by. Cllr. Crome seconded the suggested responses and the vote was unanimously in favour.

#### 14. Open Spaces Action Plan

It was agreed that there were no further areas to be added to the Open Spaces Action Plan.

#### 15. Training Implications (appendix E)

Following the training course from EALC the chairman had circulated a list of improvements, policies that needed to be written and documents that needed to be revised. Items 2a, 2b and 7 have already been actioned by the clerk. Item 6 will be prepared by the clerk and then items 1, 2c, 3 and 5 will be added to the appropriate agenda. The clerk will implement item 2d by circulating the correspondence list two weeks before meetings and councillors will annotate with a ringed 'A' items that they wish to appear on the agenda. The chairman will circulate his draft of item 4a, and he and the clerk will draft item 4e. These will be added to the next agenda for discussion. Items 4b, 4c, 4d and 4f will be produced in due course after seeking samples from other Councils & EALC. The clerk was asked to supply a copy of the emergency plan to Cllr. Hill. The Chairman requested to borrow the Governance & Accountability Guide (item 7).

#### 16. Correspondence not covered under previous items

C3: Hedingham Road deer sign – there has been no further response from Highways.  
 C10: Byway 15: the Chairman had recently circulated an email confirming that the County Council are considering prohibiting 4x4 vehicles.  
 C18: Speed limit at Bulmer Tye: the council had no objections and was pleased the scheme would soon be in force.

#### 17. Items for the next agenda

- Facebook page
- Draft Email policy
- Draft Back-up procedures policy
- Draft Yearplan

#### Notes

- The clerk was asked to re-report the hedge opposite St Andrew's Rise, as the pavement width is severely compromised, especially when buses etc are passing. The clerk will report on-line

|                     |                            |      |                                      |            |
|---------------------|----------------------------|------|--------------------------------------|------------|
| Balance in hand (£) |                            |      | £104,305.90<br>(Jan:<br>£105,351.94) |            |
| <b>Debtors</b>      |                            |      |                                      |            |
| VAT reimbursement   |                            |      | £1,328.65                            |            |
| <b>Receipts</b>     |                            |      |                                      |            |
| No receipts         |                            |      |                                      |            |
| <b>TOTAL (£)</b>    |                            |      |                                      |            |
| <b>Payments</b>     |                            | chq. |                                      | in budget? |
| Mrs H L Fraser      | Salary Jan & Feb, expenses | 120  | £564.32                              | On         |
| CPRE                | Subscription 2013-14       | 121  | £29.00                               | Near       |
| Anglian Water       | Nov-Feb                    | 122  | £35.40                               |            |
| <b>TOTAL (£)</b>    |                            |      | 628.72                               |            |

#### 12. Village Orchard Project

Cllr. Fulcher had circulated some information prior to the meeting. Dedham Vale AONB & Stour Valley Trust will be sending a letter soon about the possibility of establishing a small low-maintenance orchard of fruit and nut trees, for informal harvest. The Tree Warden has been consulted, and Church Meadow and the Allotments were suggested as potential sites.

#### 13. National Grid: environmental consultation

and in writing, and also inform CCLr. Finch.

- The clerk was asked to re-report the streetlights in Park Lane and St Andrew's Rise, which are still on as late as 11am.

The meeting closed at 9.36pm.

~~~~

For all the latest news from your Parish Council, log on to [www.essexinfo.net/bulmer](http://www.essexinfo.net/bulmer)

~~~~~

### SHED AND GARAGE SECURITY

Sheds and garages have always been easy-pickings for thieves and until recently break-ins have mainly occurred during winter and spring. For the past year however, there has been no let-up and we have seen offences occurring almost daily.

Whilst the police are doing everything they can to prevent, deter and detect these offences, home-owners also have a clear part to play if we are to reduce these thefts and keep your possessions where they should be – in **your** shed or garage, not in the thief's.

Please take a moment to read through these ten top tips and implement as many of the suggestions as you can...

1. Site the shed as close to your house as possible – This will make it harder for the thief to break-in without being noticed.
2. Add a perimeter of crunchy gravel around the shed or garage, and plant some nice thorny plants under the windows. Pyracantha, Berberis and Common Hawthorn are popular and effective.
3. Obscure shed and garage windows with net curtains or whitewash - A burglar seldom steals what he can't see.
4. If your garage has a rear door, fit it with a 5-lever mortise lock certified to BS 3621. Try to do the same for your shed, but if the door is not suitable, fit a "close-shackled" padlock instead and ensure that the fittings are bolted into the shed, not just screwed.
5. For garage rear doors, fit hinge-bolts in the back edge of the door. These prevent a thief from opening it by removing the hinges.
6. For sheds, if the door isn't suitable for hinge bolts, make the hinges harder to remove by bolting them to the door or by drilling out the screw heads.
7. If your garage has an up-and-over door, you can secure it from the inside by drilling a hole in each runner, just above the wheel, (with the door is in the closed position). Snap a padlock through each hole and you now have a simple

device to block the wheel's movement and stop the door opening.

8. Secure cycles, mowers, strimmers, hedge-trimmers etc., with a lockable steel cable and ground anchor. - Thieves like to work fast, so slow them down!
9. Visibly mark removable items. Thieves seldom steal property that can be traced back to its owner. Visible marking makes it obvious to a thief that the item is traceable. - For details of suitable products, contact your local Crime Prevention Officer
10. Fit an alarm. If you have a house alarm, you should extend it to cover your garage. Otherwise, you can always invest in a simple battery-operated alarm to protect your shed, garage, caravan or boat. Most have a volume of around 130db and few burglars will be able to stay in the protected area for more than a few seconds.

**Peter Caulfield** Ad Cert ED&CP  
*Crime Prevention Tactical Advisor & Architectural Liaison Officer*  
*(Uttlesford & Braintree Districts)*

~~~~~

### SPEED INDICATOR DEVICE (SID)

The device at its last location, outside Clement Cottage in Bulmer Street, produced the following statistics showing the number of vehicles and their speeds approaching from Lower Houses.



| Period                              | Speed bins (mph) |             |               |               |             |       |       |
|-------------------------------------|------------------|-------------|---------------|---------------|-------------|-------|-------|
|                                     | 0-10             | 11-20       | 21-30         | 31-40         | 41-50       | 51-60 | 61-70 |
| 6/8/12 to 4/12/12 (39,457 Vehicles) | 369<br>1%        | 3,158<br>8% | 13,179<br>33% | 19,893<br>50% | 2,757<br>7% | 97    | 4     |
| 1/2/12 to 4/3/13 (7,476 Vehicles)   | 71<br>1%         | 518<br>7%   | 2,616<br>35%  | 3,822<br>51%  | 427<br>6%   | 22    | 0     |

*Ed. Note how the percentages despite the lower number of vehicles are very similar.*

~~~~~

The next edition will be published around the end of June 2013. Can I please have all your pictures & articles, by the **15<sup>th</sup> June**. Call 378155 or email [mike@mcrome.fsnet.co.uk](mailto:mike@mcrome.fsnet.co.uk)