

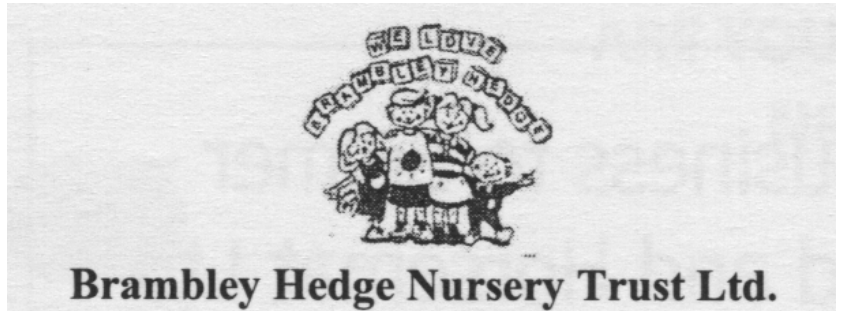


What's On?

The Newsletter of Bulmer - March 2011
(Including Bulmer St., Bulmer Tye, Finch Hill, Batt Hall, Upper & Lower Houses. Church Rd & Hedinaham Road). View in colour at www.bulmeressex.co.uk

END OF AN ERA' FOR BRAMBLEY HEDGE

At an emergency meeting on Wednesday 9th February, the Directors of Brambley Hedge Nursery Trust Ltd, with the endorsement of the Trustees, reluctantly took the decision to close the nursery permanently from Sunday 27th February 2011.



Due to the falling birth rate and falling child numbers, the recession and the political climate, the once thriving nursery has been struggling to survive for several months. Despite all best efforts in forward planning, marketing and grant applications, and even with closing for two days per week, funds are so low that the nursery is no longer viable.

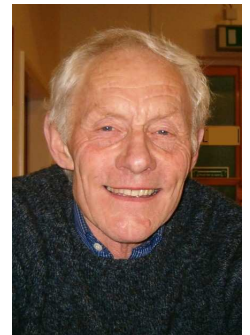
The Directors and Trustees would like to thank all members of the local community who have supported the nursery over its lifetime. Without community input and goodwill the nursery would not have existed, and many local children have benefited from this happy, caring start to their education. There has been so much about Brambley Hedge that was excellent, not least its dedicated staff team and a learning environment that was so welcoming. Sadly it is the 'end of an era' for this wonderful place.

Secretary Hannah Fraser



END OF AN ERA' FOR BULMER PARISH COUNCIL

At the Parish Council meeting of 11th March two very long serving stalwart Councillors announced they would not be standing for election in May this year. Margaret Mills has served the Parish since May 1986 including 7 years as Chairman. Peter Rowe has served 20 years including a period as Chairman. With Barbara Rawlins also stepping down as Parish Clerk in July, their dedication and particularly their knowledge will be surely missed.

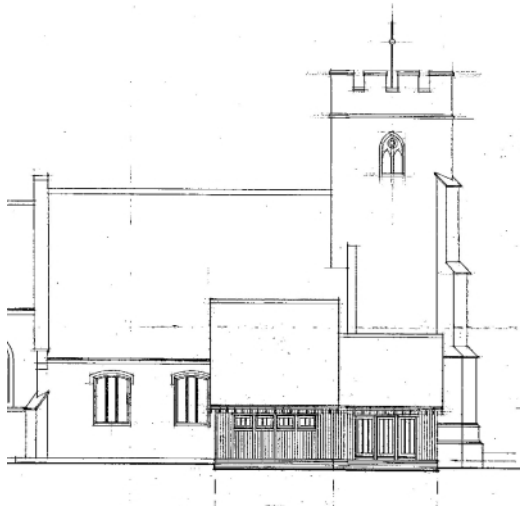


Your remaining councillors on behalf of the residents would like to thank them for all for their hard work and dedication.

Councillors at this meeting also expressed their desire for a formal election in May, and for this to take place, the Parish needs at least 8 nominations. Anyone wishing to stand as a Councillor should contact Barbara Rawlins on 01787 370845.

ST. ANDREWS CHURCH EXTENSION

In early March after arduous negotiations with English Heritage and the various church organisations a planning application was submitted to Braintree District Council.



The application is for a two-storey extension to the north side of Church to create toilets, meeting room, kitchenette, administration room, storage and improved disabled access.

A decision is due to be made by the end of April, and if the go ahead is given the battle to raise the funds will begin.

~~~~~

**VILLAGE HALL NEWS**

We hope you all like the "spring clean" the main Hall has had. The re-painting was carried out in January and we hope this didn't interfere with any of your activities.

The committee is striving to keep the building in good repair and would welcome any comments you may have on how we could improve it further. It is comforting to know that after so many clubs folded over the previous two years several new ones have begun and the stitch and sew club has now restarted and going from strength to strength.

We are planning several events this year. The first is on 17<sup>th</sup> June which is an entertaining evening on "Ruby and her Horses". For full details of this event see the leaflet accompanying this What's On.

We will also be joining the school to hold a Summer Fete on 16th July. Watch out for more details on Parish Notice Boards and the village website (bulmeressex.co.uk).

We hope you will support these events as they enable us to keep rents and hiring charges at their present rate and also maintain the building.

If any of you are still not members of the Village Lottery and would like to join then ring Dawn on 376676 for an application form. Remember, you have to be in it to win it!

**The A.G.M. will be held on Friday 3<sup>rd</sup> June at 8pm**

Please come along and show your support.

**VILLAGE LOTTERY WINNERS**

The Lottery still provides 3 lucky winners each month. It is a vital fundraiser for your village hall. Are you a member? The more members the more funds for the Village Hall and the bigger the prize! Please support

| Month | First                  | Second               | Third                 |
|-------|------------------------|----------------------|-----------------------|
| Jan.  | Mrs T Bowler           | Mr J Cutter          | Mr J O'Reilly-Cicconi |
| Feb.  | Mrs M O'Reilly-Cicconi | Mrs E Cook           | Mr & Mrs P Rowe       |
| Mar.  | Mrs V Mansfield        | Mr & Mrs R Tomlinson | Mr P Fulcher          |

your village hall and contact Dawn at the Post Office (376676) if you would like to join.

~~~~~

BULMER SKYLARKS

Despite the very cold weather our stalwart members have continued to attend the meetings held in the Village Hall. We hope that warmer weather is on the way and that we can enjoy some spring and summer activities.

Following a very well attended talk by Peter Darlington on the National Stud we are all looking forward to a trip to Newmarket in April for a guided tour around the establishment.

On 26th April we will be holding a "pre-wedding" party to celebrate the marriage of H.R.H. Prince William to Miss Catherine Middleton, which is taking place on 29th April.

Our other events this spring are: -

May 24th

My Life in Stitches
By Vera Batters

June 28th

Ladies Day at Bulmer Races
Followed by a Strawberry Tea

July 26th

A Vicar of Many Dibbles
Father Eoin Buchanan

We will also be holding a Fashion Show at the Edinburgh Woollen Mill shop on the evening of May 11th. Ticket price £2.50 which will include refreshments and a chance to purchase clothes at a discount rate. This is a "Must See" event as many of our members will be modelling the clothes and we have even managed to persuade some of our male members to model the men's fashion items.

HOW CAN YOU MISS THIS, IT WILL BE A FUN EVENING!

It will be a ticket only event and these can be purchased from Barbara or Maggie on 370845 or 374758

BULMER NATURE DIARIES

For the second year running we have had more than a taste of real winter, with December being officially recognised as the coldest in 100 years. On the 20th, the garden thermometer was showing -12 deg C at 9am, only rising to -5 by midday!

It was around this time that we were invaded by a small army of Blackbirds, at least two dozen, who busied themselves stripping the last Darcy Spice apples from our ancient tree. Most, if not all of these, will have been migrants from the continent. They were joined by about half a dozen Fieldfares, both up aloft in the tree and clearing them up on the ground, where they left an unholy mess for us to walk into! On 23rd. Dec we saw a flock of 40 Skylarks, on a field beside the Gestingthorpe road. Like the blackbirds, these will have been winter migrants. On 18th Jan. four Buzzards made a fine sight, soaring high over Little Dean Spinney, with the bright sun picking out their markings brilliantly.



An unusual sighting by some friends at Brettenham, a white Stoat or Ermine. In colder parts of Britain where snow lays all winter through, Stoats moult into a white coat in winter, which makes them far less visible against the snow. Our stoats usually remain brown. It's thought that the early snow and severe cold triggered off the change in this individual. It's very unusual around here, but not unheard of. Strange also, to think that the fur which has trimmed the robes of our sovereigns and peers of the realm for centuries, should come from our humble little rabbit hunter.



Another interesting sight was down on the Stour at Rodbridge. We were watching a Cormorant diving for fish, after three or four dives it surfaced with a large Pike clamped in its beak. We had fleeting views of it with the fish, which was clearly too large for the bird to swallow, as it splashed around in it's struggle. Eventually it gave up the attempt, but whether or not the pike survived its ordeal, we couldn't tell. With that prolonged spell of Arctic weather, fears were being voiced about the effect that it would have on our wildlife. Fortunately, since the end of December the winter has been far more temperate, giving the more vulnerable birds and animals a chance to recover.

With the increasing amount of light pollution that we get nowadays, stargazing is not as easy as it was when I was a kid. I particularly remember Christmas-time, when by tradition we always spent Boxing Day evening with an aunt and uncle, who lived just



opposite the old chapel in Bulmer Street. Stepping out of that cosy little thatched cottage into the icy blackness was something of a rude awakening. Then the long, seemingly endless walk back up to Upper Houses, when I can remember being mesmerised by those countless pin-pricks of light, twinkling through the black void of space, with the broad swathe of the Milky Way arching overhead. Dad would point out the Pole Star and the Plough, which, apart from Orion, is the only constellation that I can readily name. But at times a shooting star would streak across, usually appearing as a thin streak of light, disappearing as abruptly as it appeared. But last December, returning home after dark, a really bright streak of light hurtled vertically down. This shooting star, or meteorite appeared to leave a wider streak, as it plummeted into the earth, seemingly just behind the Street. I'm sure that it must have buried itself in the field behind us, whereas the vast majority of meteorites burn up in the atmosphere and never reach the earth's surface. This was on 15th Dec. It would have been from the Geminid Meteor shower, which always occurs in mid December and can produce as many as 120 meteors per hour at its peak.

New Years Day saw the Sudbury Flora Group's traditional winter meeting, when we search for any plants actually in flower. This year we met in Bulmer and concentrated on the Avenue, Churchyard and Meadow. After December's weather, I doubted if we would find any at all, but we actually clocked up 13 species. Most were plants, which will literally flower in any month of the year, such as Dead nettles, Groundsel and Chickweed. But two, Red Campion and Yarrow, were survivors from last Autumn, probably protected from December's extreme cold by a thick layer of snow. By contrast, we covered the same area on 1st Jan 2003 when we hurriedly amassed a total of 22 species flowering, as we dodged between some heavy, squally showers.

The Churchyard also provided the first genuine spring flowers, on Feb 9th. As expected, one was a Lesser Celandine, the second, a Bulbous Buttercup, standing up proudly behind the War Memorial, was well in advance, not normally daring to show it's bright petals before early April.



I mentioned in December about our fruitless journey to try and catch up on the flock of waxwings in Melford, but although we are still waiting to catch a glimpse of one, I'm pleased to report that they have now been seen in Bulmer. At the end of January Rachel Duncan, who lives at the lower end of Church Road, phoned to say that she had spotted one in her garden. Moreover the next day she encountered a small flock of them perched in an ash tree, beside the footpath from Jenkin's Farm to the Upper Houses Lane.

The end of January always brings the RSPB Big Garden Bird-watch. We clocked up a few more species than usual, much helped by two Bullfinches and a Sparrow hawk, which turned up within the

allotted hour. Despite a good number of different species, the numbers of commoner birds were down, with only 1 Robin, 1 Starling, 1 Collared Dove, 1 House Sparrow, 1 Goldfinch, 2 Great Tits and 2 Blackbirds. Chaffinches were the only birds to buck the trend, with 9 individuals.

Something to look out for in the coming year, a really spectacular spider which has only recently moved onto our area, the Wasp Spider. The body is about 3/4 of an inch long and has bands of startling vivid yellow and black bands. It's preferred habitat is rough grassland, where it constructs large webs. One of its main items of prey is grasshoppers. Last year there were scores on a meadow at Alphamstone, so I am sure that they must have made it to Bulmer by now.



Peter Rowe

~~~~~

### COE'S MEADOW



Volunteers wanted for a Working Party Sat. 2nd April 9:30am to help clear the scrub area at the top of Lime Avenue, everyone welcome. Please bring your own

tools. Whatever time you can spare will be most welcome.

**Diary date: FUNDAY Sunday 26<sup>th</sup> June**

Would you like to be involved in the running of Coe's Meadow? We are looking for a number of very enthusiastic people to join the committee. If you are 18+ and would like to be involved in organising the next family fun day and the general management of the Meadow please let us know.

***I'm sure you would!! For more information please contact Chris Leigh on 01787 378133.***

Or would you like to be a "Friend of Coe's Meadow" this would involve giving up some time once or twice a year to help with work parties on the Meadow. Maybe weeding or filling rabbit scrapes, pruning bushes or other maintenance work. ***It costs nothing.***

***If you are interested please ring Chris Leigh on 01787 378133***

Chris Leigh (Chair CMMC)

~~~~~

PARISH COUNCIL NEWS YOUR COUNCILLORS

Margaret Mills (Chairman)	- 01787 269377
Mike Crome (Vice Chairman)	- 01787 378155
Peter Rowe	- 01787 375935
Peter Fulcher	- 01787 269935
Stephen Morgan	- 07973 341048
Chris. Leigh	- 01787 378133
Bethan Cook	- 01787 370435

Barbara Rawlins (Parish Clerk) - 01787 370845

DATES OF FUTURE PARISH MEETINGS

All meetings are bi-monthly, normally held on the second Friday of the month in the Village Hall at 7:45pm

13 th May	8 th July
9 th September	11 th November

All parishioners are welcome to attend and there is a 15 minute slot for questions from the floor, however in order to receive a response, notification of any question should be given to the Clerk at least 7 days before the meeting.

COUNCIL ELECTIONS 2011

In May 2011 it will be time for District & Parish Elections and as you have already read Margaret Mills & Peter Rowe will not be standing for re-election. If you would like to represent your village on the Parish Council, then this is your opportunity to join the Council. If you would like to know more about being a Councillor, then just speak to Barbara Rawlins or any of the current Councillors above. Nominations need to be submitted by the 4th April. Or logon to www.nalc.gov.uk/Toolkits/Become_a_councillor/Become_a_councillor.aspx

MINUTES OF THE BULMER PARISH COUNCIL MEETING HELD ON 14th JANUARY 2011

PRESENT: Councillors: Margaret Mills (Chairman), Mike Crome, Bethan Cook, Peter Fulcher, Stephen Morgan, Peter Rowe and the Clerk. Peter Darlington (Village Agent). One member of public.

APOLOGIES FOR ABSENCE: Christine Leigh
DECL. OF INTERESTS: Cllr. Mills when discussing planning application - Jenkins, Plough Green.

PUBLIC QUESTIONS: None
APPROVE THE MINUTES of the meeting held on 12th November 2010 Proposed Cllr. Crome, seconded Cllr. Fulcher.

MATTERS ARISING – Cllr. Crome brought to the Council's attention of the special clothing required when he attends the NRSWA training day. It happens that several members of the Council already have some of the clothing, which can be lent to Cllr. Crome. The Shopper Bus is in operation at Finch Hill and it also takes in Batt Hall.

During the icy December weather, D Cllr. Nigel Harley was asked if Upper Houses could be gritted in severe winter weather.

Peter Darlington said he had delivered salt to various people. it was suggested that enquiries should be made as to where salt could be stored.

PETER DARLINGTON reported that the village agent scheme now has funding for another year. The scheme has been very successful - they have delivered meals, visited people when carers have been unable attend and generally assisted in all manner of ways especially over the very cold spell, e.g. getting patients to appointments.

They are also in discussion with GP's and the NHS with regard to the 'crossing county borders' problems.

COE'S MEADOW REPORT: the CMMC is concerned that dogs are being allowed to run free over the recreation ground. This is strictly against the health and safety rules for the ground and notices clearly

state that all dogs must be on leads. A letter has been sent to a resident who is ignoring the ruling, advising that the District Dog Warden has been informed. The Committee thanks all those who helped to clear the wild grass areas.

PLANNING:

Brickfields, Hedingham Road - erection of single and two-storey extension to rear and single storey porch to side. No objections from Bulmer Parish Council.

Warlin, The Street - reduce crown and shape one small Mulberry tree. No objections from Bulmer Parish Council.

Jenkins, Plough Green - Installation of 16 Photovoltaic Solar Panels to the south-facing roof of the barn. No objections from Bulmer Parish Council.

1 Finch Hill - Alteration of external materials from painted render to off-white hardiplank boarding and new first floor window. The Parish Council had no objections to the window, but objected to the cladding on the grounds that it would not be in keeping with the other rendered properties.

CORRESPONDENCE & NOTICES

1. Ransom strip adjacent to Coe's Meadow - the Trustees are unwilling to allow access to the land.

2. Manhole covers on Turnpike Piece allotment. The Parish Council did not meet with the building inspector as he had already inspected the site at the request of another person. However, the Parish Council received the following report from Gary Kirby - Braintree Building Control surveyor..... "Our records show that the drainage run in question was opened up and offered for inspection on 21st February 2003 and found that all was satisfactory. This alleviates any doubt as to whether or not a final inspection was carried out.

The manhole nearest the notice board is approx 300mm below ground level. This could be the result of ground level being made up over the years? There is no evidence of subsidence or movement of the manhole as there is no visible damage to the drain run. I would recommend either graduating the ground level back from the inspection chamber or raise the inspection chamber using raising pieces. I do not see any issues concerning the furthest manhole, as looking through technical guidance it is accepted that ductile iron covers and frames can be surrounded by 'suitable as dug or granular material', they do not necessarily need to be bedded on lean mix. There would appear to be clips available that can secure ductile iron covers and frames to the chamber. This might be worth pursuing.

I would stress that the above are only recommendations and due to the time elapsed this department has no power to take enforcement action".

3. In view of the information received from the Borough Surveyor, the Parish Council asked **Mr. Benns** (owner of the sewer) what action he intended to take on Mr. Kirby's recommendations.

4. The Parish Council has nominated the **Bulmer Brickyards Ltd.** for the Mineral Working and Active Landfill Sites Environmental Award.

5. An enquiry had been put to County Highways as to why a resident's **private driveway** had been **tarmaced** by the County contractors at no cost to the resident. County Highways are to investigate the matter.

6. The Parish Council **accepted the 2011 estimate** from Mortimers for grass cutting the village areas.

7. John Doe asked the Council if they required the **spread of soil**, taken from recent ditching at Turnpike Piece, to be **grass seeded**. The Council preferred it to be left until other allotments had been taken up.

8. Following a site meeting, Simon Harris tendered for the proposal to **coppice the hedge opposite Parsonage Wood**, Hedingham Road. The scheme was being organised by Michael Crawford - Agent to Lazell Farms. The Parish Council asked the Clerk to write to Mr. Crawford to ensure that the Parish would not be involved in any costs now or in the future.

9. It was proposed by Cllr. Mills, seconded Cllr. Crome that when the new Clerk takes up her position in July she should join the **Society of Local Council Clerks** for her first year. The Council would pay the fee.

10. The Clerk was asked to advise Mr. Davey, who is **overdue** with his **allotment rent** for 2010, that his Tenancy Agreement is to be terminated and his plot passed on to the next in line.

11. It was proposed by Cllr. Crome, seconded by Cllr. Fulcher that an **oak tree** should be planted in **memory of Ron Mansfield**. The site to be on Coe's Meadow by the ransom strip. Cllr. Rowe said that a sapling could be transferred from Little Dean Spinney (if one was found suitable), but money would need to be spent on tree guards. The proposal was carried unanimously.

FINANCIAL REGULATIONS & NEW REVISED STANDING ORDERS

It was proposed by Cllr. Fulcher, seconded by Cllr. Rowe and carried by the Council that the **Financial Regulations** be adopted.

It was proposed by Cllr Mills, seconded by Cllr. Rowe and carried to adopt the new revised **Standing Orders**. Councillors will receive a copy of each booklet.

PRECEPT/PSG (Parish Support Grant)

*It was proposed by Cllr Fulcher, seconded by Cllr. Crome and carried unanimously by the Council to adopt a **precept of £4,500 for 2011/12.***

*Again **unchanged for the 7th year.** Any overspend or unforeseen expenditure to be met by capital in hand.*

There was no increase to the PSG from Braintree DC

The following grants and allowances were agreed –
grant to BPCC - £650
grant to Bulmer Village Hall - £1,000
grant to Coe's Meadow - £1,000 held on reserve for any expenses that occur
grant to Bulmer Skylarks - £70
Clerk's salary increase of £40pa (£1,860)

RECEIPTS

Allotment rents	£115.48
-----------------	---------

PAYMENTS

BTCV	- help with bulb planting	£105.75 inc VAT
John Doe	- drainage/ditching - hedging	£951.75 inc VAT £330.47 inc VAT
Anglia Water	- Coe's Meadow - Allotments (Turnpike Piece)	£25.75 £48.08
Chilton Office Supplies	- newsletter	£76.14 inc VAT

Capital Investments to remain with the three banks - HSBC, Barclays, Arbutnot Latham - for the present. It was proposed by Cllr. Crome, seconded by Cllr. Mills to close the **Lawrence Coe Recreational Trust Account** held at Barclays Bank (which was just a holding account not a cheque book account), and transfer the small balance to the Community Account. **Grant funding** of £200 has been obtained towards costs for New Clerk's Training Days.

OTHER BUSINESS

Cllr. Fulcher reported that following a request from Safer Roads Bureau to pay a fee of £200 to continue the **Community Speed Watch** scheme, the Bulmer Team agreed they were not prepared to support this payment. They have disbanded and returned the equipment to Traffic Police. They commented that the scheme had not made any statistical difference to speeding in the village.

Cllr. Crome asked if the Clerk would let County Highways know that **SID** had not moved for almost a year.

The **hand rail post** at the steps to the churchyard has rotted and broken. The Clerk was asked to see if Mr. Dixey would repair or replace the post.

As no progress is being made on the issue of **parked vehicles** on the corner of Church Road, on the advice of CCllr. David Finch, Cllr. Crome is to send all correspondence relating to the matter to our MP. Brooks Newmark.

The Clerk was asked to see if there were any contractors who would **collect litter** along the A131. There being no other business, the meeting closed at 10.05pm.

Latest Parish news go to www.essexinfo.net/bulmer

~~~~~

**PARISH PATH WALKS**

The parish path walkers began the New Year by starting off on another trio of walks. The snow of December had gone and damp and drizzly conditions accompanied us on our walk to Henny. The weather hadn't dampened any spirits however and a good number made it out on the day. Some probably vowing to walk more in 2011 and declaring that a little drop of drizzle never hurt anybody. We started from Plough Green and made our way to the rear of the

Fox car park. A little grass path then lead us on to some rather sticky fields where it took rather a bit of effort to reach Ryes Lane at the other end. A little drizzle still hadn't hurt anybody but it did add a few pounds of earth to our boots after falling on to barren soil for a few days. From Ryes Lane we continued on to visit some of our favourite haunts. Some being Henny church and rectory, Fenn Farm and Dove House Farm where the footpaths now skirt the perimeter of the property. It still makes for a nice walk though and a chance to see their various



animals, notably the highland cattle. The last half a mile or so took us up to The Old Rectory and onto Ryes Lane once more where Margaret headed back off across the sticky fields to the rear of the Fox. Some of us decided that although it was probably further, it would be quicker and easier on the legs to walk back via Ryes Lane and so returned to Plough Green and the generous banquet Margaret had laid out for us before our fellow walkers.

February's walk was to Ballingdon and back. Unfortunately I was unable to make the walk myself but Margaret assures me that the small group that did had a pleasant and enjoyable walk and made it home before the heavens opened.

We were not quite so fortunate in March as the heavens did open for the start of our walk from St Paul's to the Stour. Despite the initial downpour on leaving St Paul's it was a lovely walk with quite a bit of wildlife to be seen. From low flying green



woodpeckers to swimming swans and running deer we also enjoyed the delights of some spring flowers, freshly budding hedgerows and the odd pink Wellington. Admittedly I don't think any of us had

much of an idea where we were most of the time even though the landscape was extremely open with many landmarks clearly visible. Looking at the map made it a little clearer especially after noticing the sewage works had been mapped and remembering the slight aroma floating on the wind in our direction. This was also an indicator that we had reached the Stour and would now be heading back on our return paths to St Paul's. Along the road a helpful sign pointed out we were only a few yards from entering Hickford Hill where those ever delightful field paths of heavy clay took us up through Claredown Farm and on to Lovelands Farm where we found some much more agreeable grassy paths returning us to St Paul's. A little drier than when we departed too.

Our thanks as ever go to Margaret for her time in organising and leading these lovely walks and sharing her seemingly never ending supply of wine gums.

*Lisa Sandford*

~~~~~

PARISH PATHS WALKS - SPRING



On our last walk we saw many signs of spring that brightened a grey day. There were lots of catkins and primroses and even a few early peggles (cowslips). Why not join the hardy regulars, as the temperatures rise and hopefully the paths dry out,

and see some of our beautiful local flora and fauna. Strong footwear is still advised as some spots never seem to dry up. Adult accompanied children will be most welcome, as are well behaved dogs on fixed leads. All the walks use lanes, tracks and field paths.

Easter Monday 25th April at 2.30pm

Going West - 5½ miles
Meet at Bulmer Brickworks (by kind permission of Peter Minter)

Bank Holiday Monday 30th May at 10.30am

The Five Parishes - 5½ miles
Meet on Plough Green

Sunday 26th June at 2.30pm

Lanes & meadows of Lamarsh & Alhamstone – 5 miles
Meet at Lamarsh Church

Details from Margaret Mills 269377

~~~~~

**SUDBURY & DISTRICT BRANCH THE ROYAL BRITISH LEGION**

This year sees the 90<sup>th</sup> anniversary of the formation of The British Legion. Here in Sudbury and District our branch also sees its 90<sup>th</sup> Anniversary being formed in July 1921.



Back in 1921 there were over 600,000 able-bodied men recently returned from the Great War with no jobs or homes and November 1921 saw the first Poppy Day raising funds to help these ex Service men. Today the Royal British Legion is still helping Service personnel and ex-Service personnel and their

dependants. Our local Case Workers are on hand to give advice on Welfare matters. During this 90<sup>th</sup> Celebration Year special events will be held to raise funds specifically for the Rehabilitation of Troops and new Recovery Centres the first of which is being built on Garrison land at Colchester and is due to open later this year.

**Sunday 5<sup>th</sup> June:** We shall be working with Colchester Branch TRBL for a family Day at Weston Homes Stadium Colchester with fund raising Tables. TRBL Bikers Branch, Vintage display of Cars and Military vehicles, a Military Band, Bouncy Castle, Ice Cream and Burger Vans, TRBL Freeroll Team have been approached. A WWII Re-enactment Group will re-enact the Football Game from the Film 'Escape to Victory' and past local Players are being contacted to attend and possibly play for a short time. A Grand Raffle of Memorabilia is also planned. The Day will start at 11.30 a.m. and the Game will start at 2.30 p.m. There is ample free car parking and the Stadium is easily approached from a slip road off the A12. Snacks and drinks together with Bar facilities also available. Tickets £5 under 14's £3. Fancy Dress either French or German optional. Enquiries to Stuart Hume 01787 374277 or Colin Smith 01787 379704.

**Saturday 11<sup>th</sup> June:** The weekend of June 11<sup>th</sup> and 12<sup>th</sup> has been designated as The Great Poppy Tea Party weekend. All over the Country there will be Tea Parties during this weekend and The Royal British Legion are asking us all to take part in a fund raising Party of some sort.

Bob at the Five Bells Gt Cornard has agreed that our own Tea Party can be held in the Garden and under cover at the Five Bells and will start at 2.30 p.m. Bob will prepare a buffet with Tea/Coffee. Tickets obtainable from the Five Bells or Rod Kilby 01787 373948 cost £5 to be purchased by 3/4<sup>th</sup> June to assist with catering.

**Saturday 9<sup>th</sup> July:** A Concert by the Band of The Royal Air Force Honington to be held at Delphi Social Centre Sudbury starting at 7.30 p.m. Tickets £6 from Alan Brockbank 01787 376050.

**Sudbury branch meet at The Northcroft Club Sudbury** on the second Tuesday monthly at 7.30 p.m. We have four 'Open meetings' through the year with a Speaker and light refreshments. Non-members are welcome. I am happy to let anyone have our 2011 programme together with Membership details. Cynthia Hume - Honorary Secretary 01787 374277 e-mail [hume Stuart@hotmail.com](mailto:hume Stuart@hotmail.com)

*Ted Wood*

~~~~~

NEIGHBOURHOOD ACTION PANEL (NAP) COMMUNITY MEETING

A NAP community meeting for Great Yeldham & Stour Valley North is to be held on **Monday 23rd May 2011, at 7.30pm at Bulmer Village Hall.** The NAPs purpose is to assess policing issues raised by the local community



agree community priorities and decide upon realistic and achievable courses of action to address them. (A NAP consists of people who live or work in the neighbourhood or those who provide service to the local community).

To find out more about a NAP go to www.essexpolice.uk and follow the link contacting your neighbourhood policing team. The first hour of the meeting will be given over to consulting with the community to discuss any issues or concerns that might be raised. Afterwards the NAP will meet to consider the priorities. The priorities will then be published on the Essex police website.

Please join us if you can so we can work together, to identify and tackle issues of concern within Great Yeldham and the Stour Valley North.

You can also raise issues for discussion, if you are not able to attend the meeting, by telephoning 01787 237235 and speaking with Maria Trappitt (Chair of NAP).

Ms Maria Trappitt (Chair of NAP)

~~~~~

### BULMER HISTORY SOCIETY



Three superb presentations constituted our March meeting. *The Norwich School of Art*, which was founded in 1803, and was later continued by artists such as John Sell Cotman, was revealed to us by Mike Crome, a great, great grandson of the school's famous founder, John Crome (1768- 1821). Some of the

latter's notable paintings were featured as his life and techniques were revealed.

Peter Rowe's extraordinary patience in filming our local wildlife never fails to amaze. His most recent recordings, which he showed us, contained some unforgettable images. A Pied Wagtail chick being fed by its parents, a

Humming Bird Hawk Moth feeding on Viper's Bugloss, the acrobatics of a weasel and the antics of a family of Wood Mice are



just a few of the new, breathtaking glimpses of wildlife he has captured in Bulmer.

Ninety one year old Fred Pawsey D.F.C. completed the evening with a highly entertaining and informative rendition of the Suffolk accent, drawn from his rural boyhood at Alpheton. This was oral history at its best. As always, it was a joy and a privilege to have Fred with us.

Suggestions for meetings and research are always welcome. Please phone 462027

**Ashley Cooper**

"If you get a chance to see these two entertainers grab the opportunity with both hands!" - The East Anglian Daily Times.

This is a true-life narrative told by Neil Lanham from

In Aid of Village Hall Funds  
The **Bumpstead Boys** present



## RUBY & HER HORSES

A true life Suffolk narrative in Story Song & Screen set against the hardships of the agricultural depression

'If you get a chance to see these two entertainers grab the opportunity with both hands!' - *The East Anglian Daily Times*  
'Quite brilliant, excellent entertainment from sadness to side splitting laughter, magnificent photos on big screen presentation - should not be missed' 'A special evening, delightful' *West Suffolk Newspapers*

The Village Hall

## BULMER

Friday 17th June 2011

7.00 for 7.30pm- Tickets £5 (inc tea/coffee) from Margaret Tel 01787 312915 or Maggie Tel 01787 374758

stories that were told to him by his Mother Ruby. In the show the audience will be drawn back to the period just before the First World War and then through the agricultural depression of the 1930s. It was, Ruby said, a time when 'if you hadn't got anything you were lucky because you hadn't got the worry of it. For sure as eggs are eggs you'd loose it-' The production is supported by a Powerpoint presentation of Ruby's own photographs, digitally enhanced for the big screen, and each story is followed by an unaccompanied song from Andrew Stannard in his nutbrown East Suffolk voice. Everything you hear on the night will come straight out of the oral tradition, nothing having been taken from books.

~~~~~

A THANK YOU

The Parish Council would like to thank Niall Fraser (Bulmer St.) of **C A Blackwell (Contracts) Ltd.** Who supplied all the special clothing for the **NRSA** training course attended by Cllr Crome.

~~~~~

**The next edition will be published in early July. Could I please have your pictures, articles by the 15<sup>th</sup> June. Either in paper or on CD to 6 Vicars Orchard or by e-mail to [mike@mcrome.fsnet.co.uk](mailto:mike@mcrome.fsnet.co.uk).**