



What's On?

The Newsletter of Bulmer - June 2015

(Including Bulmer St., Bulmer Tye, Finch Hill, Batt Hall, Upper & Lower Houses, Church Rd & Hedingham Road). View in colour at www.essexinfo.net/bulmer

BULMER GETS ITS FIRST BLUE PLAQUE

Through the efforts of Chris. and Kevin Leigh researching the past inhabitants of their house (Langley Cottage, Bulmer Street), they have uncovered the history of John Pryke who fought in the battle of Waterloo 200 years ago in 1815.

John Pryke was born in Great Cornard in 1796 and died in 1885. He is buried in St. Andrew's churchyard, but the grave is unfortunately unmarked. At his funeral recorded by the Bury and Norwich Post newspaper; "On Monday 31st March 1885 there was a large concourse of people including representatives from the Army assembled in the retired churchyard at Bulmer for the funeral of an old Waterloo veteran John Pryke aged 90/91 years. The coffin was draped with the Union Jack, among the mourners were four pensioners decorated with medals that had passed through the Indian Mutiny and had married the granddaughters of the deceased. One of the grandson's, a bugler was present. Deceased was the *sexton at Bulmer for 24 years, he lost his wife 15 years ago, he leaves six daughters and many grand children and great grandchildren. It is stated that there are only two other survivors of Waterloo".



Should you wish to more on this fascinating story, please contact Chris. or Kevin, they will be delighted to tell you more.

* A **sexton** is an officer of a church or congregation charged with the maintenance of its buildings and/or the surrounding graveyard

BULMER HISTORY GROUP VISIT

Our next meeting is a visit to 'Gestingthorpe Roman Villa and Local History Museum', at Hill Farm Gestingthorpe, on **Friday September 4th** at 2.30 p.m.

Some walking may be involved, so please bring walking shoes. Everyone is welcome, but there is a limit of twenty two visitors, so booking is essential. To reserve a place please email ashley@gestingthorperomanvilla.co.uk or telephone 460641

ARCHAEOLOGY IN BULMER

Excavations on the late Saxon/Early Medieval site at Goldingham Hall are revealing cooking ovens, outbuildings and an early manor house. Some seventy members of the Stour Valley Community Archaeology Group came to Bulmer in late May, to continue the digging, trowelling, finds washing and recording. (Pictures of the dig can be seen by Googling the SVCA blog). Little by a little a picture is emerging of life in Bulmer between the times of King Alfred the Great, Robin Hood and the Black Death.

Excavations will continue in early September—probably on **September 10th, 11th and 12th with an Open Afternoon on Sunday 13th**—to which all local residents are invited. Anyone interested in taking part in the dig would be very welcome. Please contact Ashley Cooper on 460641 for more details.

HISTORY GROUP MEETING IN THE VILLAGE HALL

On **Friday October 16, at 8.00 p.m.**, farmer John Browning will recount 'The Adventure of the Icklingham Hoard'. Everyone is welcome. Entry is free.

~~~~~

## BULMER SKYLARKS

Skylarks will be celebrating the anniversary of V.E. day at their June meeting. It is hoped some of our members will attend in costume of that time although there is no pressure to do so. The lunch to be served will be reminiscent of that time and the entertainment is planned to reflect the period also.

Our programme for the summer will find us welcoming Katie Martin from the Warner Textiles archive on July 28<sup>th</sup>. The next meeting on 25<sup>th</sup> August, Phyllis Felton will be speaking on Sue Ryder and we will be holding our A.G.M. on 2<sup>nd</sup> September. Further plans for the year will be a visit from "A Turkish Shirley Valentine" and the Friendship Dancers.

If you would like to join us or wish to know more please ring Barbara on 370845 or Maggie on 374758

## VILLAGE HALL NEWS

Thank you to everyone who supported our last two events. The Antiques evening was a most entertaining event and enjoyed by all. Ed Crichton gave a very amusing presentation before giving his opinion and valuation on the numerous items brought in by members of the public.

The Bygones day was well supported and the exhibits were both interesting and informative and the vintage cars drew many admirers. The Village Hall has just passed all safety inspections including the electrics, emergency equipment and the fire safety equipment. It is pleasing to know that the building is as safe as it can be.

The committee is planning several events for the autumn. These will include the much requested Barn Dance and the ever popular Quiz Night. More details will be given in the next edition of the "What's On".

~~~~~

VILLAGE LOTTERY WINNERS

The Lottery still provides 3 lucky winners each month. It is a vital fundraiser for your village hall. Are you a member? The more members the more funds

Month	First	Second	Third
Apr.	Mrs M Williamson	Ms E Ingram	Mrs J Coombes
May	Mrs D Allen	Mrs E mack	Mrs K Macaree
June	Mrs E Carpenter	Mr I Hepburn	Mr S Ward

for the village Hall and bigger prizes! Please support your village hall and contact Dawn at the Post Office (376676) if you would like to join the village lottery.

BYGONES EXHIBITION.

This was held in Bulmer Village Hall on 24th May. Alan Dixey would like to thank all those who helped on the day. Kitchen ladies plus Rodney, Raffle and of course the 16 exhibitors.

We had several people who saw the signs on the main road and thought they would come and have a look. Grand total given to the Village Hall funds was £187.

Alan Dixey

~~~~~

## BULMER STITCH and SEW CLUB

This club has been running now for 30years. It was started by the W.I., we used to meet in members houses. When it got too big for that we, as now we meet in the Village Hall. It was run by Alison Brett and Janet Clark. After Janet moved to France, Jean Houghton and I started it up again, meeting in the hall on the first Monday of every month. We have a good afternoon from 2 – 4pm.



So if you do any sort of sewing or crocket you will be made most welcome. There is a charge of £1 per month to help to pay for the hall, refreshments and heating. For more information, ring Margaret on 312915.

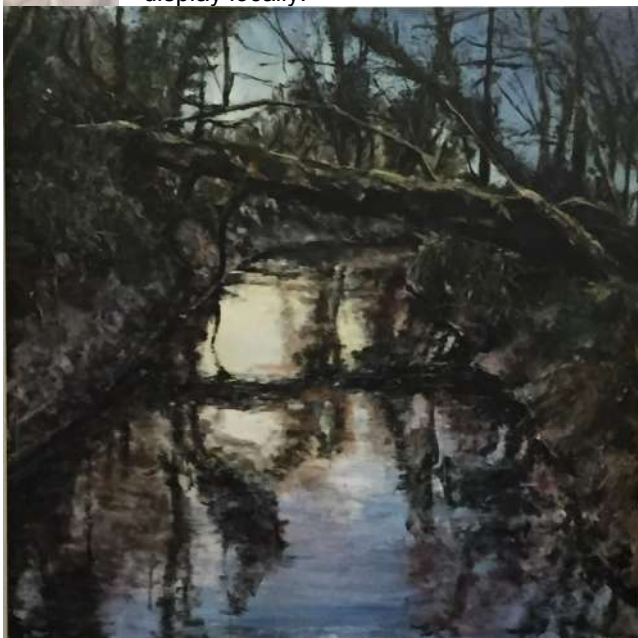
**Margaret Dixey**

~~~~~

NEW LOCAL ARTIST



This picture of a fallen tree over Belchamp Brook, was submitted by Oli Rowe for his final A level art exam. It was recently on display locally.



Jayne Rowe

~~~~~

### BULMER NATURE DIARIES

#### BULMER HIT AND RUN INCIDENT

Two residents of Bulmer were the unfortunate victims of a double hit and run accident recently. The vehicles involved have yet to be traced.

I stopped to see what I could do for the casualties, who were lying on either side of the road. A cock pheasant on one side and what looked like its brown coloured mate on the other. However closer inspection showed this second bird to be a buzzard. The pheasant had undoubtedly met its end first. Later, the Buzzard gratefully accepting some easy pickings, tucked into this tasty serving of game, only to fall victim to a four wheeled predator!

I've had several people contact me about bird sightings recently.

A red kite was spotted by several people and excited their interest enough for one two to of them get in touch, and then came the first sightings of swallow and swifts etc. All of course very local, but this following account, came from a little further afield. An email from Maureen & Tony Dixey, only recently moved to New Zealand, made fascinating reading :- "Hello Peter and Wendy, I'm sure you know by now where we are etc. but I thought I'd give you some information on the wildlife where we live. There is nothing in the garden yet, only some grass that has gone brown in the heat.

The first bird we saw was a thrush, followed by blackbirds and sparrows. Just over our fence is a huge sand dune with brambles on, there were loads of swallows but they seem to have gone, I have no idea where they go to from here. We sometimes see a falcon cruising over, I presume looking for food. At the back of the dune it's farmland with cows on, on that land there are loads of Pukeko they are a bird almost as big as a pheasant, they are bright blue with red on their heads and red legs and feet and a white rear end.



The most interesting thing we had was the Monarch butterfly, they are quite big and they lay their eggs on a swan plant, the caterpillars are stripy and no birds seem to touch them, the best bit was the chrysalis, it was lime green and sealed up with gold dots. They are very common and everybody makes sure they have swan plants in the garden, but it's brilliant for children to see the caterpillar curl up into the chrysalis and then to see it come out as the butterfly."

The British birds that they mention, prompted me to look up some facts about their introduction into New Zealand. Although some birds, such as thrushes, were taken there simply because the new emigrants were missing our British songbirds, far more were introduced to deal with the insect pests which had multiplied rapidly following the rapid expansion of agriculture and horticulture. This backfired spectacularly, most of these introductions were in the 1860s & 70s. However by 1900, chaffinches, house sparrows, yellowhammers, greenfinches and several others were all regarded as serious pests to cereal farmers. Surprisingly, even rooks were released and these still present a problem today.

The introduction of birds or animals into countries such as New Zealand where they have no natural predators is almost invariably a recipe for disaster, if the conditions suit them well enough they will speedily multiply. Add to this the likelihood that some of them will be carrying diseases and possibly parasites, that may prove devastating to the endemic fauna and flora of their newly adopted home and it soon becomes clear how risky such introductions can be.

In my March Diary notes I commented on how few celandine flowers had appeared this spring. It turned out that they were just abnormally late and by early April they were brightening up the verges in their

usual profusion. The general consensus is that the majority of our wild flowers have appeared later than usual. Oddly though, primroses were about two weeks early and many oak trees had sprung into leaf in the third week of April, extraordinarily early. A truly strange start to Spring.



We were very privileged only a couple of days ago, to be taken to a wood in South Suffolk, where two rare orchids can be found. The first we came across was the fly orchid, a small flower similar to the bee orchid, but resembling a flattened fly, rather than a bee. The second we were shown, was the very showy greater butterfly orchid, pictured above. The other pleasure in that wood was the constant song of a couple of Willow warblers.

Many bird watchers have been commenting on the later arrival of some of our migrants this year, like the plants it's been a strange start to the year, possibly because of the very indifferent May weather we have had.

Although we saw and heard a cuckoo a couple of times along the Belchamp valley during the 2nd week of May, since then they have been silent or more likely just not there. Blackcaps and chiffchaffs seem to be singing in something like their usual numbers, but whitethroats seem very thin on the ground. Although the number of swifts we get over Bulmer Street look about the same as usual, house martins and swallows are depressingly scarce. Ten minutes on 25th May seemed to buck this trend, almost like old times again, with swallows skimming down to drink at the pond, the swifts overhead, but now accompanied by house martins. Fifteen or twenty years ago it would have been a regular sight from the garden every day, but alas no longer. I was however heartened, when Janet Nevard told me that they had several martins nests under the eaves of their house and swallows nesting in their stable again this year.



The northern half of Parsons Wood has been taken in hand by the new owner, who has been carrying out some much needed coppicing over the last couple of years. It is certainly well over 60 years since the understory was cut. Already the extra light he has let into these areas is encouraging the woodland flowers. We found

about 35 flowering spikes of early purple orchid, nice to know they are still there, I remember them when I roamed the wood as a youngster. There was also a carpet of town hall clock, a diminutive plant of wet habitats which has four tiny flowers at the top of its stem, arranged like the clock faces around a clock tower. Primrose and wood sorrel also plentiful, but the unexpected find was one plant of sanicle, a member of the carrot family, which has multiple little pom-pom flower heads, which is very uncommon in this area.

We had a near mid air collision over the garden, I had scared a couple of mallard, which winged off low over the gate. At the same instant, a female sparrow hawk sped up the hedge at right angles to the ducks and had to swerve sharply to miss them. Had the hawk wanted to, it could have easily grabbed the nearest duck. I think though it would have been too big for it to manage, not exactly a "sitting" duck, but an easy target!

Let's hope the weather bucks up a little from now on, so that we can all enjoy some sun, and entice out some of the summer butterflies, they have been very thin on the ground so far.

*Peter Rowe*

~~~~~

PARISH COUNCIL NEWS YOUR COUNCILLORS



Your councillors remain as before the elections held in May, as they re-elected uncontested.

The council is later this year looking at the question of "Affordable Housing" within the Parish; **NO** sites have yet been selected or discussed. The first issue is – do we need Affordable Housing? It is likely a formal survey will be carried out later in the year, but Councillors would like to hear from any residents who have a view on this subject. Please contact the Clerk or any of the Councillors below, or logon to our "Facebook" site.

Mike Crome (Chairman)	01787 378155
Peter Fulcher (Vice Chairman)	01787 269935
Stephen Morgan	07973 341048
Chris. Leigh	01787 378133
Rose Raymond	07813 205743
Cathey Ponty	01787 313344
Stella Buchanan	01787 312512

Hannah Fraser (Parish Clerk) - 01787 374310 or email hannah.fraser@sky.com

DATES OF FUTURE PARISH MEETINGS All meetings are bi-monthly, normally held

27 th July (Note change of date)	21 st September
16 th November	

on the third Monday of the month in the Village Hall at 7:45pm

All parishioners are welcome to attend and there is a 15 minute slot for questions from the floor.

Bulmer Parish Council

***Draft* Minutes of the PARISH COUNCIL MEETINGS**

held on Monday 18th May 2015 at the Village Hall, at
7.30pm

*These minutes are unapproved until the next AGM in
2016*

Present: Cllrs. Crome, Leigh, Buchanan, Fulcher,
Morgan; DClr. Scattergood; Mrs H L Fraser (Clerk); 5
members of the public.

1. Apologies for absence

Apologies had been received and accepted from Cllrs.
Raymond and Ponty. The Chairman welcomed all
present.

2. Approval of the minutes of the AGM held on 14th May 2014

Approval of the minutes was proposed by Cllr. Leigh
and seconded by Cllr. Buchanan. All were in favour.

3. Election of Chairman 2015-6 – acceptance of office; Vice Chairman; Officers

Cllr. Crome was proposed as Chairman by Cllr. Leigh
and seconded by Cllr. Buchanan. Cllr. Crome
accepted the office for a 5th year, noting that he
hoped councillors would continue to use email as
much as possible. The following officers were also
unanimously appointed: Planning & CMMC, Cllr.
Leigh; Allotments & BVHMC, Cllr. Buchanan; Tree
Warden, Peter Rowe; Litter Team, Barbara Rawlins
(but would like to stand down soon – any suggestions
happily received); Footpaths, Cllr. Raymond; Vice
Chairman & Emergency Plan, Cllr. Fulcher.

The AGM duly concluded at 19.39pm.

THE PARISH COUNCIL MEETING FOLLOWED at 7.45pm:

*These draft minutes are unapproved until the next
Parish Council Meeting in July*

The Chairman welcomed DClr. Wendy Scattergood.

1. Declarations of interest (existence and nature, with regard to items on this agenda)

Cllr. Fulcher declared a non-pecuniary interest in the
planning application at Bulmer Tye, item 8.

2. Approval of the minutes of the meeting held on 16th March 2015

Approval of the minutes was proposed by Cllr.
Morgan and seconded by Cllr. Leigh, all were in
favour.

3. Matters arising from the minutes

i) SID – update: The anti-race app has been installed,
statistics have been downloaded twice and are now
on the parish website. They are more informative
than previous figures, a real benefit. There was a
discussion as to whether the SID should be moved
again. The Chairman is to investigate whether
Highways would move it again.

ii) Noticeboard – update: The panels have been
ordered and paid for, although there is a 4-week lead
time. They may need to be fitted by a carpenter.

4. District Councillor Wendy Scattergood

DClr. Scattergood introduced herself. She noted that
she represents 10 villages and will do her best to
attend meetings, as all seem to be on Mondays, and
is happy to be contacted by email. She is also
Chairman of Planning at BDC. There was a question
about the Old Police House, she confirmed this was
under consideration at moment. She stated that she
was generally not in favour of ribbon developments,
but aware some villages need new houses to support
their schools. DClr. Scattergood then left the
meeting.

5. Coe's Meadow report

The Fun Day is on 7 June. The Table tennis table is
due shortly, the total cost will be £3000 including VAT
and installation, plus mat around, and then the
replacement logs will be put in at the entrance to the
meadow. The willow arch will be overhauled soon.
Help is needed for the Fun Day setting up on
Saturday evening. A working party will be arranged
before the inspection in November. The Stour Valley
Volunteers will be here to cut the wildflower areas on
2nd September. A general maintenance handyman is
needed for Coe's Meadow – this will be advertised in
What's On. The seesaw may need work, Cllr. Leigh is
to send photos to the manufacturer.

6. Allotments report

3 plots are currently vacant, there has been some
interest but the plots are too big for some people.
Cllr. Buchanan will let the council know if plots need
spraying or strimming.

i) Overgrown allotment – update: The Clerk was
instructed to write a letter immediately to give one
month's notice, including references to the tenancy
agreement and the relevant legislation.

ii) Village Hall report: A report had previously been
circulated. The hall is in excellent condition, but
needs more use. The date of the Parish meeting is to
be planned at same time as the years' meetings
(December).

7. Clerk's report

i) Date of July meeting: The Clerk is now unable to
make 20th July, it was agreed to reschedule to the
27th July.

ii) Disclosable interest forms: Councillors were asked
to return these to the Clerk, they will also go on the
website.

8. Planning

Vicars Orchard (trees), The Bungalow (4th bedroom
amendment), Cherwell (trees), Hayes Cottage
(trees), Warlin (amendment) – all permitted. The
Limes (trees), Tye Workshop (bungalows), Holland
Hill (extension) – all pending.

9. Finance

i) Audit: Internal Auditors report; Balance of
Accounts; Annual Return; Insurance Schedule; Risk
Assessment; Allotment rents: Acceptance of all
accounts and audit was proposed by Cllr. Leigh and
seconded by Cllr. Morgan, all were in favour. The

Clerk explained new layout of insurance schedule (due to a new underwriter). All were in favour of accepting a new 3-year agreement.

ii) Balance in hand: This had previously been circulated. Cheques were signed.

Receipts since last meeting

First precept installment, localism fund and one-off payment 4,074.00

TOTAL (£)	4,074.00
------------------	-----------------

Payments since last meeting

BALC	Subscription 2015	18.00	
Anglian Water	Coe's Meadow Nov-Feb	16.95	
Anglian Water	Allotments Nov-Feb	37.65	
G Nicholl	Lime Avenue Tree Surgery	1875.00	
H L Fraser	Clerks salary Jan & Feb & exp.	589.52	inc VAT
CPRE	Subscription 2015	36.00	
Traffic Technology	SID anti-race app	120.00	inc VAT 2015/6
X2Connect	Paint kit for telephone box	154.80	inc VAT 2015/6
Onthecase	Noticeboard panels	1120.80	inc VAT 2015/6
TOTAL (£)		£3,968.72	

Payments to be signed at this meeting:

Clerks & Councils magazine	Subs 2015-6	12.00	
EALC	Affiliation fees 2015-6	168.59	
EALC	Health & Safety courses	160.00	
BVHMC	Annual grant	1000.00	
Skylarks	Annual grant	100.00	
PCC	Annual grant	1000.00	
Running Total	Payroll & Audit	60.50	
Chilton Office Supplies	Newsletter	85.25	inc VAT
J Doe	Hedgecutting	372.60	inc VAT
Cllr M Crome	Antivirus update	23.33	
Mrs H L Fraser	Clerk salary Mar & Apr & expenses	591.88	inc VAT
Bulmer Village Hall	Village Hall hire	65.00	
AON UK Ltd	Insurance	1945.03	
TOTAL		£5,584.18	

spending has exceeded budget	
spending near or on budget limit	
spending is under budget	
spending is within CMMC savings	

iii) Review capital: The Clerk was asked to approach the Castle Hedingham clerk re: advice on an investment account.

10. Traffic Issues

i) Batt Hall white gates – update: There has been no installation as yet. The Clerk will email Cllr. Finch and enquire. As to a date.

ii) Yellow lines application – update: The Clerk is to continue preparing the 3rd draft.

iii) A131 – update: Recent Highways minutes note safety improvements at the Church Road junction – the Chairman is to investigate.

iv) School signage – update: This is also in recent Highways minutes - the sign has been approved but no action occurred – but one has been put up at The Street crossroads. The Chairman will query with Cllr. Finch.

11. Transparency Code

The Parish Council mostly already complies, a few documents are to be added to the website on an annual basis. The Clerk will check and add a list of Parish Council land and the Audit reports.

12. Telephone Box update

i) The Street: Mr Cullen has volunteered to restore this box, and has received the paint kit.

ii) Park Lane: Mr Cullen has offered to take this box on as well. All agreed to accept his offer to maintain the boxes. The Clerk was asked to write to Mr Cullen to confirm this and to thank him for this contribution to the village. The Clerk was asked to reply to the letter requesting to purchase the box, with a refusal.

13. Annual Parish Meeting 2015 debrief

The Clerk will circulate the minutes shortly. It was not as well attended as last year – but included the Chairman's Annual Report for parishioners' benefit. There was an open discussion on the school's future, broadband issues and affordable housing.

14. S106 Project – Coe's Meadow overflow carpark etc.

Cllrs. Leigh and Fulcher had been in discussion with Stephen Wenlock at BDC and have received three estimates for the overflow carpark matting and safety fence. The Clerk is to send Cllr. Fulcher the guidance application notes. It was unanimously agreed that Cllr. Fulcher should proceed with the carpark matting (using Horsemat Ltd, which is the cheapest estimate and also a company located in this parish), with the safety fence to be discussed at the next meeting.

15. Items for the next agenda

- Affordable Housing
- Photographic policy
- Buying the salt bin

16. Date of next meeting: Monday 27th July.

Meeting closed at 9.17pm

~~~~~

**CAR THEFTS**

We all do it, walk away from the car and with our back turned to the car press the button on the key to lock it, never thinking that it may not lock. Yet a simple thing like **looking at the car as you press that button** to get the confirmation of it locking with lights flashing, or just pulling the handle to check it is locked can prevent a lot of thefts of or from motor vehicles. Why does it not always lock, it could be fault, battery running low, user error or some individual with device to block your signal nearby. In



any case **Lock it, Check it** and we can prevent some crimes.

If you have cars of different values, where possible park the higher value car in your garage. When parking a car on your driveway ensure it is well lit and park the lower value car in front of the higher value car, as the thieves are more likely to target high value cars and will be deterred if they can't easily drive such a car away from the scene. Locked gates and collapsible posts on the driveway will also deter the thief. With high value cars consider the fitting of a tracking system.

As cars become more and more advanced and rely more and more on computers to manage their systems our thieves become more technical too. To cater for both the technical and less technical thief use the locking system on your vehicle and look to the good old fashioned "Krook Lock", steering wheel, or pedal lock to supplement it, it has a great visual deterrent.

Lastly before you turn in for the night check that all doors, ground floor windows and easily accessible windows are closed and locked. PVCu doors – don't forget that the door is not fully locked until you have lifted the inside handle and turned the key. If you have an intruder alarm and can do so activate the downstairs zone. To stop the burglar getting to the vulnerable windows and doors to the rear ensure that side gates are closed and locked.

Please also ensure that you put your car keys somewhere safe and out of sight, when you return home. Put your car keys in a drawer (preferably one that is noisy to open) or some other secure place, but don't take them up to the bedroom with you.

**Stephen Armson-Smith 74324**  
**Crime Prevention Tactical Advisor**  
**Telephone 101 extension 407110**  
**Mobile 07525 409720**  
**The Police Station,**  
**Blyths Meadow,**  
**Braintree,**  
**Essex CM7 3D]**

~~~~~

BULMER WEBSITES UPDATE

There is now a new "Village" website for events, Lottery, Clubs & Societies, St. Andrew's Church at: www.essexinfo.net/bulmervillage

Information with regards to your Parish Council can be found on a separate site at: www.essexinfo.net/bulmer

There is also a Facebook site for the Parish Council which is an 'open' site for you to communicate with your councillors at: <http://bit.ly/1HhJbsM>

For the history and stories of Bulmer of yester year can be found at: www.bulmerhistory.co.uk

Just type these addresses into your browser either Chrome, Explorer or Firefox

If you have any comments or would like to add an item/event to any of these sites then please send an email to mike@mcrome.fsnet.co.uk

~~~~~

**BULMER OPEN GARDENS 2016**  
**St. Andrew's Church Bulmer**



**BULMER**  
**OPEN GARDENS**

**On Saturday 4<sup>th</sup> June 2016**  
**And Sunday 5<sup>th</sup> June 2016**

We are asking for people to offer to open their garden over this weekend from 2pm until 6pm in 2016. (We are asking early so you can plan as required)

We held Open Gardens in June 2013 and it was a great success so please give some thought about this for 2016.

We are hoping to hold an Art Exhibition in the Church together with Refreshments and a Cake Stall. There will also be a Tombola and Plant Sale in the gardens.

If you would like to donate plants for the Plant Sale that would be appreciated.

**Contact either June Coombes on 01787 377357**  
**or Liz Fulcher on 01787 269935 as soon as possible.**

~~~~~

HERITAGE WATCH IS LAUNCHED

Influential figures in Essex's heritage industry came together on 23rd of April at Stow Maries First World War Aerodrome to launch a new police initiative aimed at protecting the past. Heritage Watch is an Essex Police led partnership between agencies that are committed to protecting

our heritage, as well as members of the public who want to help preserve our heritage.

The watch scheme looks to maintain and preserve important places of interest, encouraging vigilance and reporting of suspicious activity around sites. This is to prevent any theft or crime that may damage assets beyond recovery, which may lead to the loss of a piece of history for this and future generations.



Heritage Watch locations would include ancient earth works and archeological sites, listed buildings, museums, galleries, religious buildings, historic visitor attractions and others.

Dominic Petre of the [Historic Houses Association](#) said he was 'very pleased' about the initiative, adding: "When heritage is lost, it is lost forever.

"Crimes against heritage are not just crimes against the owner. They are crimes against future generations and culture in general".

Chief Superintendent Carl O'Malley said: "In Essex we have some really significant sites, from the Roman remains in Colchester to Audley End House in Saffron Walden.

"The key element for any watch scheme is to involve a broad range of different partners and bring them together. Through expert advice and assistance, we can all help one another. It is about communication, sharing, understanding and reporting".

For further information contact your local Essex Watch Liaison Officer using the Police 101 non – emergency telephone number.

~~~~~

**PARISH PATHS WALKS**

We have had some very enjoyable walks during the past 3 months with reasonable weather. The bluebells in Alphamstone woods were wonderful to behold. On the last outing we encountered the same steam engine three times and concluded that it was travelling at about the same speed we were walking! More walkers would be most welcome so get the strong footwear out and join us. Walks are usually about 5 miles long including the next 3 shown below.

**Sunday 26<sup>th</sup> July at 2.30pm**

'THE SUDBURY WATER MEADOWS'  
Meet at Finch Hill end of Smeetham Hall Lane

**Bank Holiday Monday 31<sup>st</sup> August at 10.30am**

'A WANDER AROUND TWINSTEAD PARISH'  
Meet at Twinstead Church.

**Sunday 27<sup>th</sup> September at 2.30pm**

'LONG MELFORD TO BRIDGE STREET'  
Meet at Public Car Park next to the old school.

Enquiries to Margaret Mills 01787 269377

~~~~~

COE'S MEADOW FUNDAY

"The sun shone yet again."

A great day was had by all. Some people have said "the best one yet".

The donkey rides were enjoyed by all the young ones. The Zorbs were a big hit with all the teenagers. Thank you "The Fox" the beer and wine flowed all afternoon. It was a sell out for both the barbeque and the cream teas. Much giggling came from the Maypole as the sequences were something of a trial.

Sarah & Charlie did a remarkable job of organising all the games. This year we were lucky to have the artist Vernon Lever help the children to paint the large canvas that he had drawn.



Also thanks to Stour Valley for the woodcraft that the children really enjoyed.

Thanks to everyone who helped and a very big thank you to our loyal ladies who, once again, baked for us.

Chris. Leigh (CMMC)

~~~~~

**WOMENS CYCLE TOUR**



The second stage with 92 riders of this national event started on June 18<sup>th</sup> in Braintree, came through Finch Hill, where it included the "Queen of the Mountains" climb, (*didn't know we had a mountain in Bulmer!*) before finishing in Clacton.

~~~~~

The next edition will be published around the end of Sept. 2015. Can I please have all your pictures & articles, by the **15th Set.** Call 378155 or email mike@mcrome.fsnet.co.uk