



# What's On?

**The Newsletter of Bulmer – September 2010**

(Including Bulmer St., Bulmer Tye, Finch Hill, Batt Hall, Upper & Lower Houses, Church Road and Hedingham Road).

## The Tour of Britain Cycle Race Comes to Bulmer!



On a sunny but cold morning in September the cyclists on the seventh, out of eight stages, continued their race around Britain. Having set off from Bury St. Edmunds for a finish at Colchester 152.3km away. On

reaching Long Melford

they then headed out to Lavenham, before passing through Sudbury and entering Essex at the top of Ballingdon Hill on to their next destination Halstead. This meant an ideal place to watch them pass through Bulmer, would be near The Bulmer Fox. Most people stood patiently and waited for them to appear. However, others got out the garden chairs, put up their Union Jacks and sat in comfort for 45 minutes until the big moment arrived.



First to appear were two out in front by almost 2 minutes (we were told) ahead of the pack.

Followed by probably as many police motorbikes as the approaching pack and all the support



vehicles with a helicopter-filming overhead, then came the remaining pack of 97. Within minutes they had appeared & gone. The stage was finally completed by Borut Bozic (from Belgium) - Vacansoleil Pro Cycling, in 3hrs 24m 15s, an average speed of around 25mph (if my math's is correct)!

**Now lets go back almost 25 years** and take look at 'What's On?' from the past. What it looked like and it's content, with thanks to Bill Neil who came across these two old editions from 1986. For those unaware of what WEA stands for, it is the Workers Education Association, which was formed in 1903 and is still very much alive today with branches in Maplestead, Castle Hedingham & Halstead. They provide a wide & varied range of subjects to study. Further details can be found at [www.wea-essex.org.uk](http://www.wea-essex.org.uk).

*NOTE - No '3' IN FRONT OF TELEPHONE.* *SPRING 1986.*

**WHAT'S ON IN BULMER**

W.E.A. Thursday 6th. March at Bulmer School at 7.15pm. Learn about Incas & Aztecs during a six week course on "NATIVE CIVILISATIONS OF THE NEW WORLD" by Professor J.G. Brotherston. Details from Tom Davey (tel. [redacted])

**FOOTPATH WALKS** (2nd. Sunday of the month)  
 Sunday March 9th. meet at Cavendish Church. Leader Colin Watson. Details: Don Macaree tel. [redacted]

April 13th. Bulmer Village Hall 10am.  
 May 11th. Pebarsh Mill Lane 10am.  
 June 8th. Alphamstone Church 10am.

**DANCE TO THE "BARNACLES"** at Bulmer 22nd. March 8 - 12. Ticket reservations to Wendy Rowe. Ticket including refreshments £2.75 each. Bring your own drinks.

**DANCE TO "INERTIA REEL"** at Bulmer Friday 9th. May in aid of Bulmer Church. Ticket reservations to Wendy Rowe Sudbury [redacted] by end of April at latest. Price including refreshments £2.75. Bring your own drinks please.

**GIFT AUCTION** Friday 9th. May at Belchamp Walter Village Hall in aid of three churches. Anything sold goes 50/50 to your own parish church and vendor. Vicar or Mrs. Lambert will collect.

**GARDEN FAIR** at Bulmer Tye House May 10th. 10 - 4. It is hoped to prepare beforehand a booklet called "Down to Earth in Bulmer" of favourite gardening hints, stories, and lore. Please give your contributions to Noel Owen or Hilary Slaughter by March 10th.

**FOLK DANCE EVENINGS**

These have been regularly taking place in Bulmer Village Hall for about 6 years. They meet 7.45pm - 9.45pm. (with interval) every 2nd. and 4th. Mondays. No subs. pay 50p. at door. Couples of any age welcomed whether beginners or not. They are a mixed ability group and welcome new faces. Tel. Wendy Rowe [redacted]

**DANCING CLASSES**

Running at the moment are: A class for 3 to 5 year olds on Wednesday afternoons; Children's Ballet Classes on Monday, Wednesday & Thursday during term time after school (for exams of R.Acad. of Dancing); Open Modern Dance Classes (8-12yrs.) on Thursday at 5pm. and Adult Tap Dancing class on Tuesday evenings 8 - 8.30pm. If you are interested in any type of dance class or private lessons contact Juliet Crompton-Couvrela on Twinstead 502. She wonders if there would be interest in (i) adult ballet (ii) adult modern dance (iii) adult exercise class (for the reasonably fit) (iv) ballroom dancing classes for adults and 15+ teenagers.

'What's On' contributions should be sent to Basil Slaughter 6 Park Lane tel. [redacted] for typing at the school, duplicating by the Vicar and distribution by volunteers mainly school children.

*What's on in Bulmer?* *8/7/86.*

**FOOTPATH WALKS**

July 13 10 a.m. from Bardfield Bridge  
 Aug. 10 from Gestingthorpe Church  
 Sept. 14 from Long Melford Green  
 Details from Don Macaree [redacted]

**ALLOTMENTS** Would be allotment holders should apply to the Parish Clerk, Richard Tomlinson 'Luthan' Church Rd

**VILLAGE FESTIVAL**  
 John Dixey will chair a meeting of all interested groups and individuals to explore the possibilities of another festival in 1988. Village Hall Friday 19th Sept 7.30 p.m.

**WEA. CLASS**  
 The next course starting in the school in September is likely to be on 20th Century Literature. Full details later.

**BULMER W.I.** meet on the first Monday of every month. This happy crowd would like to see more members, especially new residents so that they can get to know each other and those who have been members for several years. Bring & buy stall each month and mock auction once a year. Enquiries to Margaret Dixey tel. [redacted]

**FOLK DANCE CLASSES** start again on Sept. 15th 7.45 p.m. New couples welcome. Caller is Kate Badrick from Finchingfield. 50p. per p-per w. Ring Wendy Rowe [redacted]

**FOLK DANCE** Village Hall Fri. 12th Sept. Tickets £2 each inc. refreshments can be obtained from Wendy Rowe.

**BALLROOM DANCE** Village Hall Nov. 15th 8p.m. to midnight. Dance to ever-popular Doug Pitt Band. Ticket only admission at £2.50 available from Sept. onwards from Ron Carpenter [redacted] or Margaret Dixey. Don't be disappointed by leaving it too late to get tickets.

Next 'Whats on' in October. Contributions to 6 Park Lane or tel. [redacted]



**VILLAGE HALL NEWS – 2010**

We hope you like the re-decoration that has been done to the Village Hall. The entrance hall, toilets and back Committee room have all been given a "make over" which has brightened up these areas. It is through your support that we are able to maintain the building without having to raise hiring charges. We hope that the re-decoration did not affect any of you too much and we thank you for your tolerance. The building was inspected by Essex Fire and Rescue service and we are pleased to report that we have a satisfactory standard of fire safety. This is mainly due to our Fire Officer who carries out a comprehensive fire risk assessment for us and ensures that we are implementing a sound fire safety standard. However it is still up to the individual hirer to ensure that all aspects of the conditions of hire regarding fire safety are observed.

Future events that are planned for this year are:

**Ferret Racing  
Saturday 16th October**

Fun for all the family  
Doors open at 7pm, 1st Race 7:30  
Bar and Tote

Ticket price - £3.00 in advance – £4.00 at the door.  
Children 16 and under - half price.  
For tickets or further information, please ring John 466030 or Maggie 374758

**Quiz Night  
Friday 19th November**

Tables of 6  
Fish and Chip Supper

To book a table please ring Maggie on 374758

**VILLAGE LOTTERY WINNERS**

The Lottery still provides 3 lucky winners each month. It is a vital fundraiser for your village hall. Are you a member? The more members the more funds for the Village Hall and the bigger the prize! Please support

Month	First	Second	Third
June	Mrs J Steed	Mr & Mrs C Bennett	Mrs T Bowler
July	Ms N Harding	Ms N Harding	Mr & Mrs B Parry
Aug.	Mr & Mrs Howard	Mr E Nevard	Mrs H Eastgate

your village hall and contact Dawn at the Post Office (376676) if you would like to join.

**BULMER SKYLARKS**

We held our A.G.M. at our August meeting and our Chairman, Barbara, thanked everyone for their support and attendance over the past year. The club was started in April 2009 and membership has grown steadily since then. Unfortunately two of our members have been in hospital for a considerable period but we are glad to report that both are recovering and hope to be back with us very soon. We send them our very best wishes.

Ladies Day at Bulmer Races was held at our June meeting where members and invited guests enjoyed an afternoon of "racing" followed by a strawberry tea. Our ladies all arrived dressed for the occasion with a

wonderful array of beautiful hats.

Our gentleman did not let us down either with their smart suits and bow ties. The price for the best hat was awarded to Kate who received her award from



Father Eion who had been very enthusiastic throughout the afternoon especially when it was his turn to become the "jockey" of his team's horse! The Bulmer Gold Cup was awarded to a group of ladies who were very competitive despite their demure appearance! We now look forward to our autumn activities which will include Vera Batters talking about "My Life in Stitches" and a visit from **Age Concern**. Plans are also being made for our Christmas dinner.

If you would like to come along to our meetings then please do join us on the fourth Tuesday of each month 2pm until 4pm, you will be most welcome. If you would like more information then ring Barbara on 370845 or Maggie on 374758.

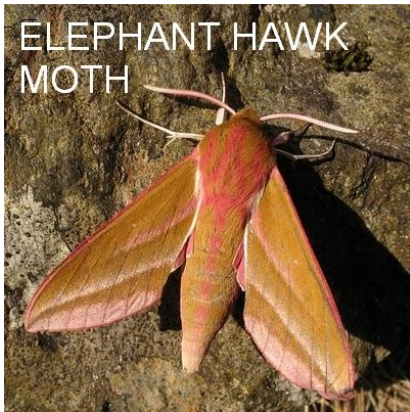
**BULMER STITCH & SEW CLUB**

Would you be interested if we could get the Club started up again? It was with great regret that we had to close after 20 years. As many clubs are closing it would be nice to start up again. For details either ring Margaret 01787 312915 or Jean 01787 476828, as soon as possible as if enough people are interested we would like to start hopefully in October. It would possibly be on Tuesday evenings once a month.

**BULMER NATURE DIARIES**

Despite the gloriously warm July & early August we have enjoyed, it hasn't been an outstanding year for the summer butterflies. After a good showing of Orange Tips and Brimstones in the early spring, the summer failed to come up to expectations. Only Small Tortoiseshells and Small Whites appeared to buck the trend, Red Admiral, Peacock, Meadow Brown, Speckled Wood, Gatekeeper and Common Blue were all somewhat scarcer than usual. Last year we had a real invasion of Painted Ladies, which migrated here from southern Europe in there thousands, this year I have seen just three individuals.

It's been a poor summer for butterflies; moths seemed to have fared better, if the night of 10th July was anything to go by. A friend kindly loaned us a moth trap and having warned our neighbour that we would be turning night into day, we switched on the very bright light and left it to shine on through the small hours. The catch was simply amazing when we came to release them in the morning, we must have had three or four hundred in all. Most of these were small "brown Jobs" but we also had some truly magnificent hawk Moths and other larger moths. An incredible six Elephant Hawks, which are a beautiful mixture of cinnamon and pink, two Privet Hawks, and a Poplar Hawk Moth. Other colourful moths included: - Angleshades, Brimstone, Small Emerald, Swallow tail and the Buff Tip, which when at rest is superbly camouflaged. They look so much like a piece of broken twig that we had to touch one to be convinced that it was a moth.



I've been scratching my head over the feeding habits of our little mafia of about 25 House Sparrows. Each year I have to cover up the beetroot, as these little scoundrels invariably shred the leaves. This year they actually attacked the fleece to get at the leaves, and stripped any leaves that dared to peep out. But,

just 5 yards away and grown from the same seed, is a second row, which I neglected to cover. These they totally ignored, despite the fact that they were still busily attempting to breach the defences of the protected row. Is it that they never once sampled the second row and just didn't recognise them?

In Bulmer you never know what drama or dark tragedy may visit your very doorstep. Back in the summer, Carolyn Munroe had a close encounter with nature in the raw. Hearing high-pitched screams coming from outside the cottage, she looked out to see an agitated group of Sparrows flee from the front of the house. Opening the door, right there at her feet a Stoat was giving the coup de grace to a rabbit, by sinking its chisel-like teeth deep into its victim's neck. The stoat shot off into the hedge. Watching from indoors, Carolyn said that after a while the stoat returned to drag its prize away down the front path and right across the road to the Coe's Meadow side, abandoning it in the road a couple of times, as traffic sped through. Apparently it struggled

to get the rabbit up onto the high grass verge. Not being able to carry the rabbit up this miniature cliff, it finally succeeded by mounting the bank, reaching over from the top and hauling it up that way, before disappearing with it into the thick hedge. Stoats are becoming ever more common with the increase in the rabbit population, but this one certainly chose an unusually public place to attack its quarry.

I have never regarded myself in any respects as a "twitcher", but if a rare bird turns up close to home, I'm as eager as the next to get a glimpse of it. In mid June all the serious bird Watchers mobiles were directing them to the old Bush Boak Allen factory site at Long Melford, where a Marsh Warbler had turned up. We joined half a dozen others to get a look at this brownish warbler, almost identical to a reed warbler, but with a much more varied song.

Talking of rarities, Coe's Meadow pond had its very own rarity, around the same time. Flowering at the shallow end were many plants of Great Yellow Cress. It is only listed at two other sites in N.E. Essex, one near Mistley and the other around Abberton Reservoir, so this makes a third site for the area. The seed probably lay dormant in the soil, until being disturbed by the creation of the pond. Four other plants scarce to our area have come to light over the past year or so in the village, all on Smeetham Hall lands. The first, Hounds Tongue is usually a plant of dry, stony ground. The other three favour a chalky soil and were found on a very steep meadow (so steep that it has never been ploughed) My grandfather Philip "Tulip" Rowe writing in the 1930s mentions "on a pasture as steep as the roof of a house -- a kind of thistle that bloom like a boar thistle, but has no stalk, for the flower heads are in the grass with long narrow leaves and some very sharp spikes" This is undoubtedly a description of the Dwarf Thistle, which I was delighted to find still flowering there, together with two other chalk loving species, Common Rock Rose and Salad Burnet both rare for our area. However, Salad Burnet was sown in the wild flower mix on Coe's Meadow, but of course cannot be classed as native to that area, as it has been introduced there.

Another summer has sped past, and we have to bid farewell to our summer migrant birds. We seemed to have had a migrant's leaving party in the garden the other day, a male Blackcap was perched on our wild rose, two Whitethroats were in the larch tree, a Chiffchaff



was chasing around with a couple of our Blue Tits and overhead Swallows and House Martins were hawking for insects, quite a collection. It won't be long now before the Fieldfare and Redwings arrive, to herald the onset of winter. They should be well provided for this



year, judging by the heavy crop of Sloes and Hawthorn berries weighing down the hedges.  
*Peter Rowe*

~~~~~

**BULMER HISTORY GROUP**

On July 16<sup>th</sup>, exactly seventy years to the day, after German plans for the invasion of Britain began to be prepared, almost a hundred people gathered at the Village Hall to hear Fred Pawsey D.F.C recount memories from his life. What an enormous privilege it was! With anecdotes that ranged from the poignant and moving to the amusing and inspirational, Fred described his rural upbringing at Alpheton, his days at Sudbury Grammer School and later at the R.A.F Technical School at Halton. Then came his recollections of the Battle of Britain. Serving as an aircraft 'fitter' at Tangmere and Middle Wallop, Fred maintained and repaired the damaged Spitfires and Hurricanes during the height of the conflict. But his potential as a pilot had also been recognized. In 1941 he was sent to America to be secretly trained. Eventually he returned to fly missions over North Africa, the Mediterranean, Italy and Yugoslavia, for a while advising partisans 'behind enemy lines'. It was a unique –unforgettable—experience to listen to Fred's memories. One that will linger in our minds as the anniversary of the Battle of Britain is commemorated this September and in future years. Our perspective of the R.A.F, the Second World War—and also village life in the 1920's— has been enriched and extended. (The evening was even more special as about a dozen former pupils from Fred's later career, as a School teacher at Sible Hedingham were also in the audience.) As always our thanks to all those who helped to make this memorable event possible; producing and delivering the flyers, making and serving the teas; arranging the chairs and organising the raffle. The group's next meeting on **October 22<sup>nd</sup>**, sees the welcome return of **Pip Wright**, who will give a talk entitled, '**Finding out about History, using Old Local Newspapers**'.

*Ashley Cooper*

----//----

**BULMER HISTORY GROUP SUMMER OUTDOOR MEETING**

At the beginning of September we were treated to a very informative afternoon, thanks to Peter & Wendy Rowe who arranged a guided walk around Groton



Wood near Boxford. The site consists of 20 hectares of ancient woodland much of which has existed for thousands of years. An indicator of this is the large area of small-leaved lime in the northern section alongside the ancient coppice stools. Lime was the

most common tree species in lowland Britain during the Bronze Age and this part of the wood probably dates from then.

Our guide was Robin Ford whose knowledge of all the different species of trees, insects, and butterflies is absolutely astounding. To a few of us a small leaved lime looked very much like a large leaved-lime, but we learnt from Robin - amongst many other things - that you could easily identify a small-leaved lime by turning the leaf over. By looking at where the leaf is attached to the stalk you will see a patch of small brown hairs.

Robin was very well supported by Wendy with her knowledge of different mushrooms & toadstools, she introduced us to a whole new world of woodland plants. "Here's one Wendy, what is it?" was the cry on many occasions throughout the afternoon, and straight away came the reply, "Oh that's a Funnel Cap", "is it edible?" we all asked. None were taken home!



With Peter's help we were treated to the sight of 'herb paris', a very rare plant hidden in the undergrowth with a beautiful petal pattern and one central blue seedpod in the centre.



Once again many thanks to Robin, Peter & Wendy for such an educational summers sunny afternoon stroll and plenty of wild food on offer including an abundance of blackberries, waiting to be picked.

*Mike Crome*

~~~~~

**PARISH COUNCIL NEWS  
YOUR COUNCILLORS**

Margaret Mills (Chairman)	- 01787 269377
Mike Crome (Vice Chairman)	- 01787 378155
Peter Rowe	- 01787 375935
Peter Fulcher	- 01787 269935
Stephen Morgan	- 07973 341048
Chris. Leigh	- 01787 378133
Bethan Cook	- 01787 370435

Barbara Rawlins (Parish Clerk) - 01787 370845

**DATES OF FUTURE PARISH MEETINGS**

**All meetings are bi-monthly, normally held on the second Friday of the month in the Village Hall at 7:45pm**

12 <sup>th</sup> Nov.	14 <sup>th</sup> Jan. 2011
-----------------------	----------------------------

All parishioners are welcome to attend and there is a 15 minute slot for questions from the floor, however in order to receive a response notification of any question should be given the Clerk at least 7 days before the meeting.

## A REMINDER FOR NOVEMBER 5<sup>th</sup>

Please remember there a number of thatched roofed properties in the Parish & therefore care should be taken when letting off fireworks.

## MINUTES OF THE MEETING OF THE BULMER PARISH COUNCIL HELD ON 9th JULY 2010

**PRESENT:** Councillors; Margaret Mills (Chairman), Mike Crome, Bethan Cook, Peter Fulcher, Christine Leigh, Stephen Morgan, Peter Rowe and the Clerk. Peter Arlington - village agent.  
2 members of the public.

**APOLOGIES FOR ABSENCE:** David Finch CC, Nigel Harley DC.

**DECL. OF INTERESTS:** None

**APPROVE THE MINUTES** of the meeting held on 14<sup>th</sup> May 2010. Proposed by Cllr. Crome, seconded Cllr. Leigh.

**MATTERS ARISING: School bus layby** - currently the operator is using a minibus in the afternoon, which goes into the school site. Occasionally, due to numbers, they might use a larger bus: but we are told this is not a regular occurrence. In the morning, however, a larger vehicle is used and drivers have been instructed not to park on the curb and hang out into the road. Where possible a smaller vehicle will be used in the morning.

### COE's MEADOW:

#### Maintenance -

- rabbit holes in the paths have been repaired.
- garden furniture cleaned and treated.
- noticeboard cleaned and ready to be treated.
- overhanging ash tree branch removed and growth at the base of the trees, pruned.
- new play and exercise equipment in place and the Committee are trying to obtain some photo illustrations, to be put up in the field, of how the equipment should be used.

Fun Day and World Cup -

Once again a beautiful sunny, warm and dry day and at one point a head count of 200 was taken.

As the Fun Day occurred on the same day as the final of the Football World Cup a 40" TV was hired.

St. Andrews school was represented by the choir and dance club.

Older members of the village enjoyed their picnics and the beer tent.

The CMMC would like to thank all the scone makers and those who helped generally.

### PLANNING:

**4 Bulmer Tye** - retrospective consent for new vehicular access of the Fox car park leading to the rear of 4 Bulmer Tye. Application was supported by Bulmer PC, but commented that it was annoying when applicants were not totally straightforward with their original application. Providing all the screening takes place, this is a better option than using access to the A131 on a bend.

**3 Park Lane, Bulmer Tye** - Bulmer PC and Braintree DC received a complaint that cement was being delivered to the new build at 3 Park Lane from an entrance on the A131 without any road supervision, causing disruption to traffic. Also work was being carried out at weekends.

Braintree advised there were no working conditions with regards to working hours on the planning permission quoted. There are, however, some pre-commencement conditions that need to be complied with, which have been passed on to Malcolm Rollerston - compliance officer. Mr. Rollerston will also be asked to speak to the applicant regarding the use of the A131 entrance, which is restricted in

condition 5.

### ALLOTMENT REPORT & RENTS:

To form a tenant Asscn - a meeting took place in the village hall on 6th July, chaired by Cllr. Morgan. 9 tenants attended which was not enough to form an Asscn.

Points raised and discussed -

- suggested an on-line forum be set up for tenants to air their views and discuss points.
- more action to be taken on unattended plots.
- allow the remaining fruit trees to stay for the time being.
- controversy over bird feeders on trees on the allotments.
- no more plots to be let until work on ditching/drainage has been completed.

**Rents:** To include allotment/garden tenancies only - It is necessary to increase the rents as the allotments are currently running at a loss. There has not been an increase for 3 years and these new rents will bring Bulmer into line with Braintree.

The following rent increases were proposed by Cllr. Fulcher, seconded Cllr. Mills and carried unanimously.

**Residents (full paying):** From September 2011, the rent will be increased to 15p per sq.m.

**Residents (concessions):** From September 2011, the rent will be increased to 11p per sq.m.

From September 2012, the rent will be increased to 15p per sq.m.

**Non-residents:** From September 2011, the rent will be increased to 15p per sq.m.

From September 2012, the rent will be increased to 20p per sq.m.

This extra increase to non-residents was thought fit as they make no contribution to the parish precept in the Council Tax.

From 2012 rents will be reviewed annually.

**Water on Turnpike Piece** - at the present time, apart from paying for a standpipe key - which is refundable on return of the key - the use of water is not charged.

However, it has been noticed that the use of the water has been abused by leaving a sprinkler on over night.

In future **NO SPRINKLERS** will be allowed, only **HAND HELD HOSES**. The water invoices will be monitored with the view to a charge being made per sq. m. of allotment to those tenants holding a key if the use of water is excessive.

### CORRESPONDENCE & NOTICES:

**1.** St. John Essex - free training. Several Councillors were keen to take up this offer.

**2.** The Parish Council was advised that **Community Warden** scheme would finish end of August.

**3.** The Clerk was asked to seek more information on **NRSWA Signing, Lighting and Guarding' courses**.

**4.** The proposed **bus shelter** in Church Road, opp. Park Lane is a non-starter due to tree roots obstructing the installation of a hard standing base. ECC will replace the hedge in the autumn. On inquiring of ECC as to who is responsible for the bus shelter on A131, which was deemed a write-off and disowned by the Parish Council, but has now been repaired by ECC, the following reply was received .... "If residents wish to wait for a bus at this stop it is not the responsibility of the Parish Council. If the bus shelter should have further damage, ECC will assess it at this time".

**5.** Braintree DC are introducing the **Green Heart of Essex Campaign** to run for 2 years. The aim is to do more to keep the district in tip top condition. The programme contains a number of initiatives and improvements to services, including -

- A Clean Team working 7 days a week from 7am - 8pm weekdays, 7am - 5pm Saturdays and 7am - 1pm Sundays to keep the district clean and tidy.
- "See it Report it" gives everyone the power to act if they see litter, fly tips or any other environmental nuisance that

needs to be cleared.

- issuing more fines for people who are seen dropping litter, not removing their dog's mess, fly-tipping and other environmental offences.

6. It has again been suggested by BDC to remove the **Parish Support Grant** from parishes as part of the District Council's process to reduce expenditure. The Bulmer Parish Council agreed to lobby our District Councillor and to support the campaign to oppose any move to remove the PSG.

7. The **ditch outside No. 10 Church Road** has become overgrown with weeds. The Clerk was asked to contact Greenfields Estate Manager. Greenfield's says the ditch is not their responsibility. Highways said they would look into the ownership.

8. John Doe has been asked to quote for digging out **ditches** and look at the **drains on Turnpike Piece**.

9. The responsibility for providing the **Bus Pass** changes from District and Borough Councils to County Councils from 1.4.2011. ECC are running a consultation until 30th September 2010. A questionnaire can be obtained by calling 08457 430430 or online at [www.essex.gov.uk/bus\\_pass/](http://www.essex.gov.uk/bus_pass/).

10. The new **bus operator** for Bulmer (service 11,12,13) is now, **Regal**.

**RECEIPTS:**

Clare Rice	- standpipe key deposit	£10.00
ECC	- Parish Paths grant	£139.90

**PAYMENTS:**

Vulcan Batteries	- battery for SID (paid 24.3.10)	£51.70 inc VAT
R & R. Lawnmowers	- strimmer service/repair (paid 30.3.10)	£83.67 inc VAT
Cllr. Mills	- fuel for strimmer	£11.22 inc VAT
Vulcan Batteries	- second battery for SID	£51.70 inc VAT
Chilton Office Supplies	- newsletter - Coe's Meadow	£76.14 inc VAT £176.85 inc VAT
LAH Signs	- Coe's Meadow	£176.25 inc VAT
Mortimers	- grass cutting	£1,214.97 inc VAT
RCCE	- subscription	£40.00
Anglian Water	- Coe's Meadow - Turnpike Piece allotments	£24.37 £46.49

**Capital investments** - no change at this time.

**Confirm Register of Interests** - Cllr. Mills and Cllr. Fulcher are now churchwardens, which will be noted on their Register of Interests. No other changes.

**PETER DARLINGTON (village agent)** - reported that the village agent organisation has now helped over 1000 people since its formulation in October last year.

**OTHER BUSINESS**

Section 1 of the New Model Standing Orders should be considered.

The Clerk was asked to enquire if the Community Wildlife Funding programme included allotments.

There being no other business, the meeting closed at 9.55pm

~~~~~

**PARISH PATHS WALKS – SUMMER 2010**

This seasons trio of walks began on a fine Friday evening at

the end of June. A good number of us gathered at the village hall before heading off down Brakey Hill for a walk to Belchamp and back. Taking the footpath situated at the end of Little Dean Spinney we then used some of the footpaths of Hill Farm heading for the Bulmer to Gestingthorpe road, which we crossed to walk down into Belchamp itself. Crossing the little bridge over Belchamp Brook our path through the fields took us to a higher spot. The evening was warm and still and from our vantage point in Belchamp we looked back across to Bulmer in it's full summer glory. All vegetation was now just about fully grown and we fought our way through one field of crops eagerly awaiting harvest. Reaching the other side before moving on some stopped and scratched to relieve the itching of bare legs whilst others emptied their boots of migrant stalks hitching a ride out of the wilderness on their socks. Leaving the field and taking a lower track Belchamp Walter church then stood before us as we turned right to cross meadowland and another crossing of Belchamp Brook, where once more our path headed upwards to the rear of the houses on Bulmer Street. We crossed The Street and headed back up through Coe's meadow, the churchyard and onto the village hall. Although these paths are not new to us, Margaret certainly has an ability in choosing the best times to walk them. Gaining the most from the views available to us.

**At the beginning of August** Margaret led us on a circuit of Castle Hedingham. We met not far from the castle gates and headed in the direction of Great Maplestead and the field paths of Little Lodge Farm and onto Maiden Ley Farm in Sible Hedingham. The paths here run close to the river and some parts were a little damp and boggy, especially where the great canopy of trees let little sunshine through to dry the earth. Emerging close to Nunnery bridge we crossed over to pick up our next path up to Kirby Hall Road being very cautious whilst crossing the line of the Colne Valley Railway. The approaching train did actually stop but whether it was for us or the driver just didn't intend going any further I'm not sure. The continuation of our walk proceeded around the fields and tracks of Kirby Hall before coming down the fields to the right hand side of the castle emerging at Pye Corner before walking back to the castle gates.

**Our third and final walk** of the summer was on August Bank Holiday Monday. Our starting point was from Hill Farm, Gestingthorpe. The walk commenced at 2.30pm but Ashley Cooper very kindly opened the museum and gave us an hour of his time before hand enthusing on the local history and the newest developments concerning the roman villa. From exhibits of the latest prints connected with the roman villa to demonstrations and crowd participation in the history of local farming you can't help but admire the dedication, time and enthusiasm that Ashley and his father give to such a worthwhile project. By 2.30pm though, Mike Crome had managed to bring the water from the well and Ray White had successfully ignited his explosives to blow a troublesome tree stump from an old hedgerow and a large group had gathered ready for the walk. Heading off down the driveway of Hill Farm we crossed at the road over into the fields of Belchamp, crossing the brook and on up to the fields by Largess Farm. We had a little trouble here locating our hole in the hedge as it had become slightly overgrown but did eventually make it to Princes Hall. We ventured on to Hopkins Farm where shortly after on our return paths we encountered a brief shower. Our spirits not dampened the blue skies and sunshine quickly returned as we pounded our way across a freshly ploughed field up to North End Road. Crossing the road onto further field paths and woodland tracks it wasn't long before we returned to Gestingthorpe via Over Hall, Gestingthorpe church and back to Hill Farm. Our return to Hill Farm wasn't quite the end of our afternoon as Margaret had one final duty. To cut the ribbon and officially permit the parish path walkers to be the first group to walk on the newly laid floor of the Hill Farm history museum class



room. This was then celebrated with a very welcomed cup of tea and chocolate biscuit. Something, I wondered, if Captain Oates had thought of before crawling from his meagre tent into the sub zero temperatures.

**Once again our thanks** go to Margaret for her time, leadership and wine gums as well as on this occasion, Ashley Cooper.

*Lisa Sandford*

## PARISH PATHS WALKS - AUTUMN

Going to the gym costs money, or you can exercise for free on all the public footpaths we have in the area. Find some new paths to walk and new friends to walk with on these monthly walks. Adult accompanied children and well-behaved dogs on short leads are welcome. Paths may be muddy - strong footwear is recommended.



### Sunday 7<sup>th</sup> November at 2.00pm

Twixt Sudbury and Melford - 5 miles.  
Meet at Rodbridge picnic site / car park.

### Sunday 5<sup>th</sup> December at 2.00pm

A short walk before sunset – 3 to 4 miles.  
Meet at the Village Hall.

### Christmas / New Year

A walk may be arranged nearer the time.

Details from Margaret Mills 269377

~~~~~

## OTHER NEWS

### CONSERVATION STRIPS

These strips are the grassed areas along field edges created by farmers to help all types of wildlife. People on horseback and others with dogs have been observed using these areas in our parish. They are **not** public rights of way and should not be used as such. Our footpaths and bridleways are way marked and generally easy to follow making trespassing unnecessary.

### ST ANDREW'S CHURCH

The church is planning to hold a flower festival next year during the weekend after Easter, namely, 30<sup>th</sup> April, 1<sup>st</sup> and 2<sup>nd</sup> May. We also plan to have refreshments and stalls in the village hall. The PCC would be very pleased to hear from anyone willing to help in any way. Flower arrangements of all sizes are envisaged; children as well as adults could make one. To declare your interests please contact Margaret Mills 269377.



### CRAFTS FOR CHRISTMAS

#### Bulmer Village Hall

**Saturday 13<sup>th</sup> November**

**9.30am till evening**

The cost for the day is only £12 including a goody bag with materials and ideas for some cards and a project, and use of our stamps etc. This also includes tea/coffee/squash and snacks AND a jacket potato lunch. It also includes a free raffle, and a game of "Lily" bingo! Places are limited to around 20, so please



call **Tina 01787 464075** & forward payment to secure a place.

## NEIGHBOURHOOD WATCH WARNING

There have been an increasing number of thefts in & around this area from sheds & garages. It is therefore recommended that sheds & garages are made secure & not left open when unattended.

Also another crime on the increase is the theft of catalytic converters from vehicles.

Should you observe any suspicious activity, then you are advised to call the police on **0300 333 4444**.

## NEIGHBOURHOOD ACTION PANEL (NAP)

### COMMUNITY

### MEETING

A NAP community meeting for Great Yeldham & Stour Valley

North is to be held on

**Monday 22<sup>nd</sup> Nov.**

**2010, at 7.30pm at**

**Bulmer Village Hall.**

The NAPs purpose is to

assess policing issues raised by the local community agree community priorities and decide upon realistic and achievable courses of action to address them. (A NAP consists of people who live or work in the neighbourhood or those who provide service to the local community).

To find out more about a NAP go to [www.essexpolice.uk](http://www.essexpolice.uk) and follow the link contacting your neighbourhood policing team. The first hour of the meeting will be given over to consulting with the community to discuss any issues or concerns that might be raised. Afterwards the NAP will meet to consider the priorities. The priorities will then be published on the Essex police website.

Please join us if you can so we can work together, to identify and tackle issues of concern within Great Yeldham and the Stour Valley North.

You can also raise issues for discussion, if you are not able to attend the meeting, by telephoning 01787 237235 and speaking with Maria Trappitt (Chair of NAP).

***Ms Maria Trappitt (Chair of NAP)***

