

Aerial Views of Linen Mills



(Picture kindly contributed by **Colin Narramore**)

This view looking roughly NorthEast shows in the foreground the Pattison-Yeoman mill which is the present Linen Way housing estate. This is separated by a long high brick wall from the Wilford mill which is at the other side of the beck. The winding line of trees shows the upstream view of the beck and the Wilford mill can be identified

by the tall chimney which was demolished in Nov 2003.

At the top right corner is the old Windmill which has been recently restored.

Running from R to L just beyond Wilford's mill is Station Road and at the very bottom right can be seen the tower of St Thomas church and the north side of Church View running across the bottom right hand corner.



(Picture kindly contributed by **Colin Narramore**)

Looking west. This view has the Wilford mill in the foreground and the Pattison-Yeoman mill beyond the wall. The railway can be clearly seen and the area between the Wilford mill and the railway had sidings originally, for loading and unloading coal, flax and finished linen. The coal yard is still working but the coal is now delivered by road. The "field" beyond the mills this side of the railway is now housing.

The Close in 1930



(Picture kindly contributed by **Colin Narramore**)
This view is from the Rose Garden taken in 1930.



(Picture kindly contributed by **Colin Narramore**)
This view from the pavilion shows the family relaxing with their pets.

The Close in 1921



*(Picture kindly contributed by **Colin Narramore**)*



*(Picture kindly contributed by **Colin Narramore**)*

The Close in 1921



*(Picture kindly contributed by **Colin Narramore**)*

This is a view of the Terrace with one of the family? relaxing.

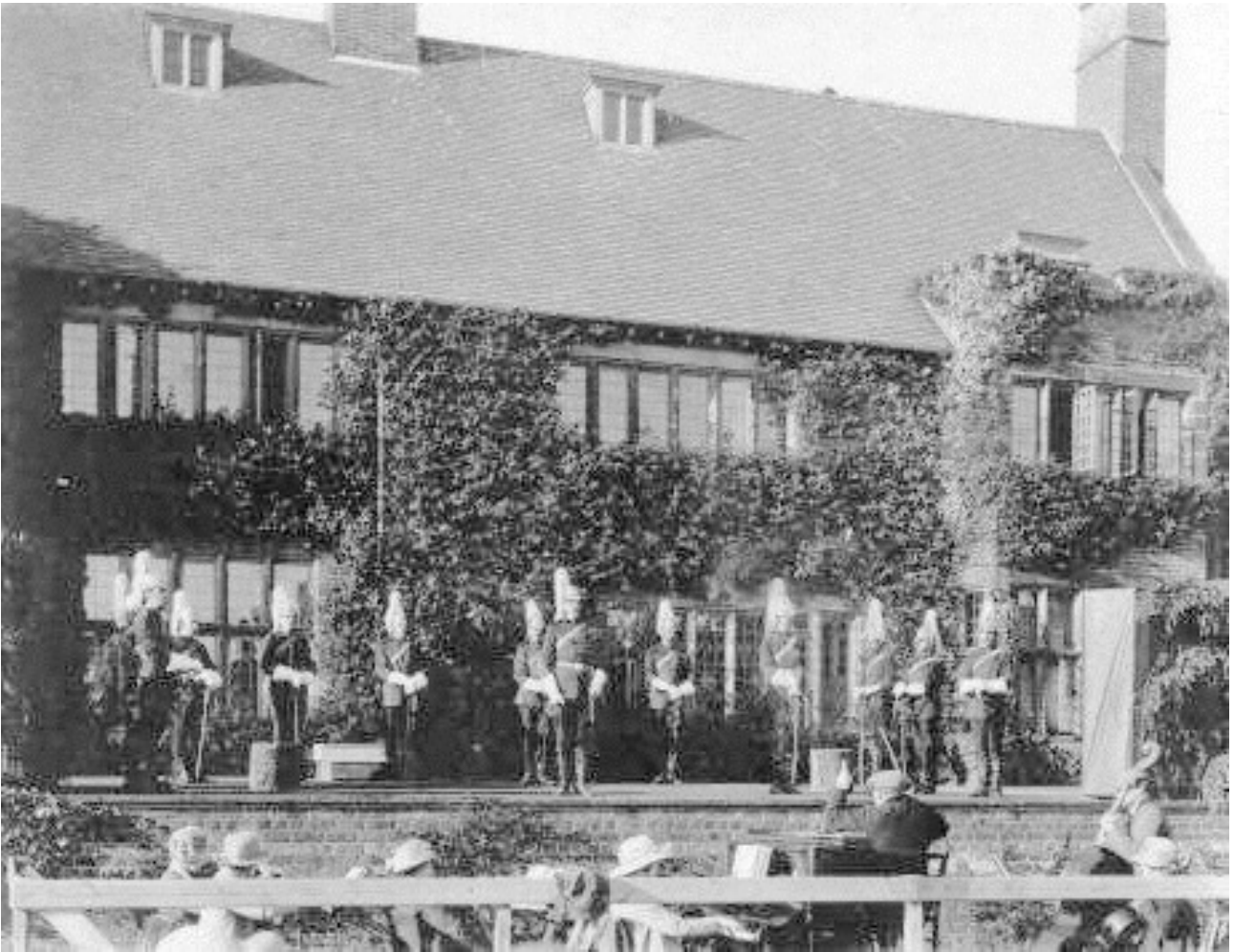
The family at the Close in the Early 1940's



*(Picture kindly contributed by **Colin Narramore**)*

This picture is of Ruth & Dr Joyce Yeoman at the Close in the early 1940's. Joyce was a doctor in Northallerton with Drs Milne & Balfour at Mayford House surgery. Mayford House surgery at that time was on the High Street about where Marks & Spencer's is located now.

Opera at The Close in 1926



*(Picture kindly contributed by **Colin Narramore**)*

This picture taken on the terrace shows the cast of Northallerton Operatic Society giving a production of "The Yeoman of the Guard" in 1926

Northallerton Silver Lining Week 1947



(Picture kindly contributed by Colin Narramore)

This display by W & J Pattison Ltd at Northallerton Silver Lining Week Exhibition was held in the Town Hall November 22nd – 29th 1947. Many other local manufactures also displayed their wares.

As the name Silver Lining implies, the idea of the savings week was to encourage people to save in order to provide the banks with

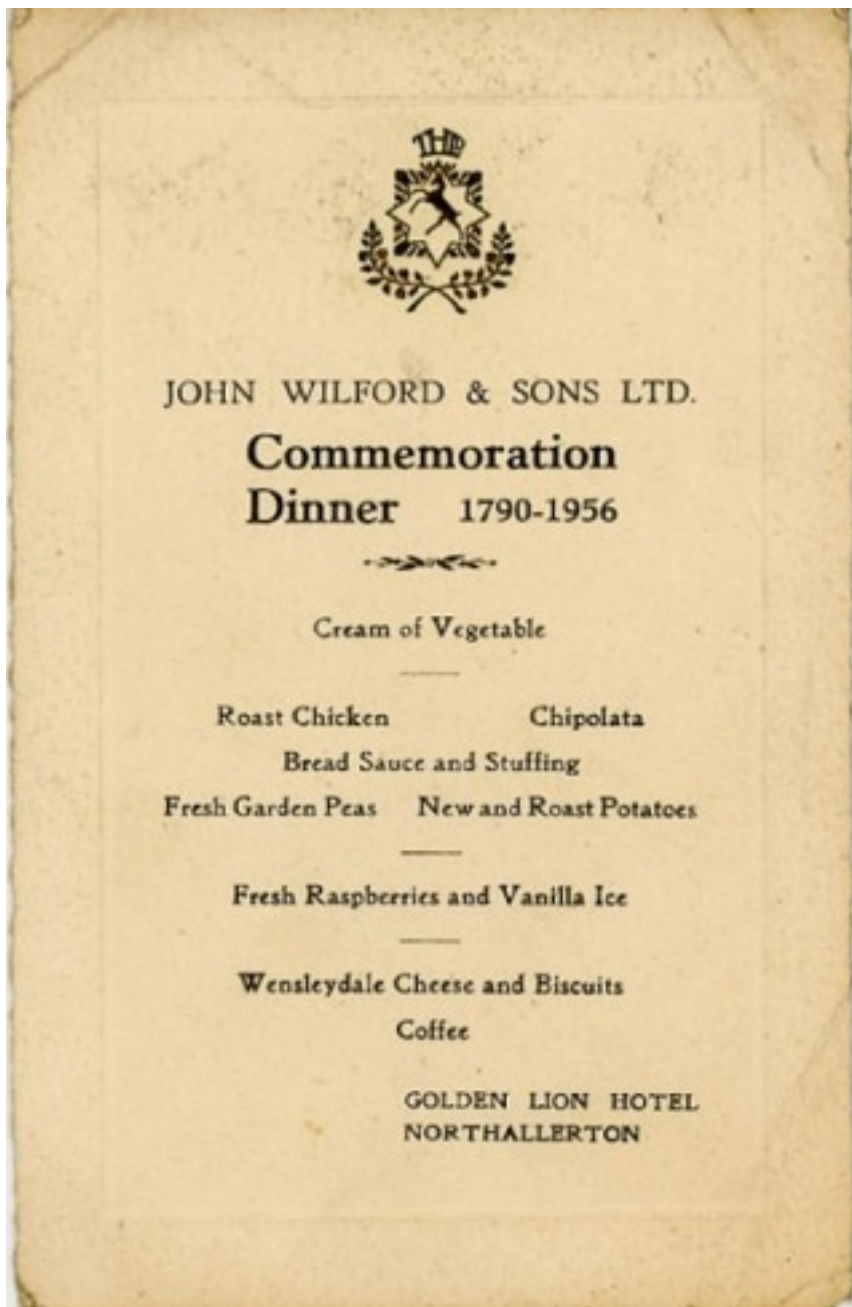
money which could then be loaned to businesses. Available cash was in great demand for rebuilding the economy during this difficult period of austerity after the end of World War 2 in 1945. The campaign over this period raised around £35,500.

Yeoman Pattison millworkers



(Picture kindly contributed by Colin Narramore)

Mill workers from the Yeoman Pattison mill are assembled for a team photograph. Does anyone know what year this is and do you know anyone on the photo?

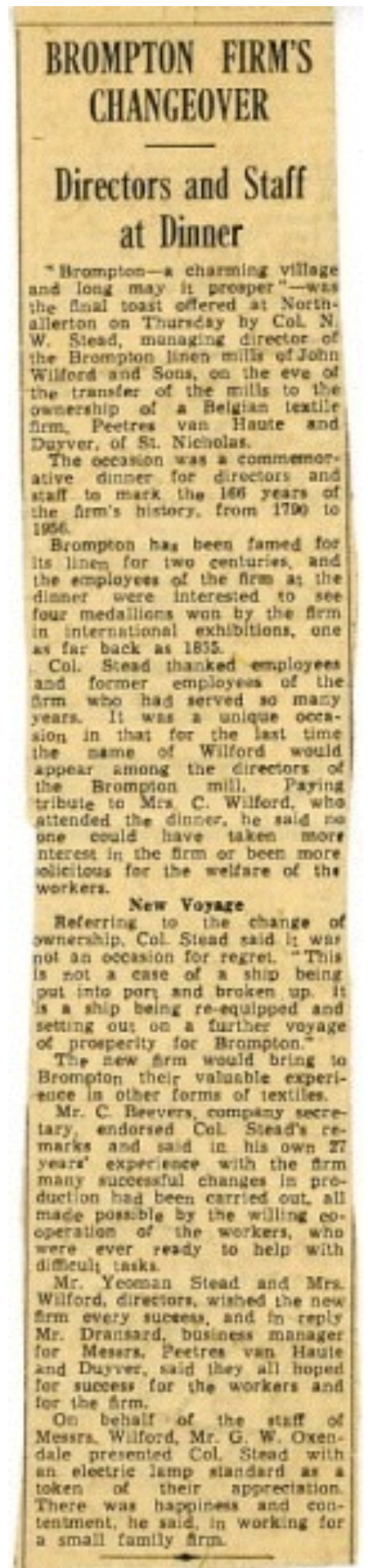


Commemoration Dinner Wilford Linen 1790-1956

(Pictures kindly contributed by Colin Narramore)

Above: 1956 Menu for Commemoration Dinner of John Wilford & Sons Ltd held at Golden Lion Hotel in Northallerton. They were handing over the Wilford business to the St Nicholas, Belgium firm of Peetres Van Haute & Duyver.

Newspaper cutting showing proceedings at the 1956 Commemoration Dinner of John Wilford & Sons Ltd held at Golden Lion Hotel in Northallerton. They were handing over the Wilford business to the St Nicholas, Belgium firm of Peetres Van Haute & Duyver.



The WILFORD family

Here is a picture kindly contributed by Mary Nowe-Wilford from Belgium. It shows a scene in Broadstairs in December 1914 when the family in Belgium were evacuated to safety in England when the Germans invaded Belgium. The little boy in the middle is an uncle of Mary - Louis De Smedt son of Jenny Wilford and Arthur De Smedt. A number of the family came to Brompton during World War 1 staying at Mill Hill House.



Unidentified people, probably Wilfords?

These unidentified pictures taken at English studios, were kindly contributed by Barrie Wilford of NSW Australia. If you have any idea who you think they might be, please let us know.





The unidentified pictures below taken at an Belgian studio, were kindly contributed by Barrie Wilford of NSW Australia.

