

SEPTEMBER 2025 VILLAGE VIEW

<b>PAROCHIAL INFORMATION:</b>		<b>BRADWELL-ON-SEA</b>
<b>Rector</b>	<b>Rev Steven Poss</b>	<b>07830150713</b>
<b>Churchwardens:</b>	Jayne Hill	07598329381
	David Thorpe	07468867831
<b>Head teacher St Cedd's School:</b>	Ruth Wright	01621776219
<div> <div> <b>Parish Magazine Manager</b>  Roger Scurrall 776341 </div> <div> <b>Church Flowers</b>  David Thorpe 07468867831 </div> <div> <b>Flowers at St Peter's Chapel</b>  David Thorpe 07468867831 </div> <div> <b>Bell Ringing - Tower Captain:</b>  Laurie Main 776438  John Pryke 776260  St Thomas Bradwell Fridays 7.45  Sunday ringing 9.30 am </div> <div> <b>Thursday Club</b>  Mel Emerson 07961 503951  David Thorpe 07468867831  St Thomas' Chapman Room - 1st  Thursday of month 2.00 - 4.00 </div> <div> <b>Rainbows</b> 5 - 7 yrs  <b>Brownies -</b> 7 - 10 yrs  <b>Guides - :</b> 10 - 14 yrs  for information phone 07757636446 or email  <a href="mailto:enquiries@girlguidingsexsexe.org.uk">enquiries@girlguidingsexsexe.org.uk</a> </div> <div> <b>Parish Safeguarding Representative</b>  Graeme Eyre  Tel: 01621776961/07985520634 </div> <div> <b>Pastoral Assistant</b>  David Thorpe 07468867831 </div> <div> <b>Bradwell Women's Institute</b>  Secretary:  Mrs T Reed 776247  Village Hall 2nd Wed 19.30 </div> </div> <div> <div> <b>Age Concern</b> 01245) 264499  <b>Two Rivers Association for Age Concern</b> </div> <div> <b>St. Cedd's School Parent-Teacher Association</b>  Secretary: Contact School 776219 </div> <div> <b>Clerk to the Parish Council</b>  Kelly Andrews. Email:  <a href="mailto:clerk@bradwellonseapc.gov.uk">clerk@bradwellonseapc.gov.uk</a>  Parish Council meetings Village Hall,  3rd Monday 7.30pm </div> <div> <b>Parish Council Chairman</b>  Hillary Baker 776575 </div> <div> <b>P.C.C. Secretary</b>  Roger Scurrall 07710 868491 </div> <div> <b>Othona Community</b>  Warden David Jenkins 776564 </div> <div> <b>St Peters Chapel Chaplain</b>  Rev S Poss 07830150713 </div> <div> <b>District Councillor</b>  Matthew Neall 776956 </div> <div> <b>Bradwell Quay Yacht Club</b>  Secretary:  Mr R. Price (01621)890173 </div> <div> <b>Village Hall Trustee's</b>  Booking Secretary:  Mr R Scurrall 776341  Chairman:  Mr R Scurrall 776341 </div> </div> <div> <div> <b>Bradwell Flower Show</b>  Committee Secretary:  Teresa Fowler 776588 </div> <div> <b>Mobile Library</b>  Every three weeks Thursdays  East End Rd outside church 10.55—  11.25 </div> <div> <b>Local Policing Team phone</b>  Non Emergency 101  Emergency 999 </div> <div> <b>Crime Stoppers</b>  Anonymous Crime Reporting  0800555111 </div> <div> <b>Bradwell Bay Football Club</b>  Youth football team contact Krysta  Collins. Practice Village Hall Field  Saturday 9am </div> <div> <b>The Medical Centre</b>  Tillingham 778383 </div> <div> <b>The Trinity Medical Centre</b>  Mayland 745400 </div> </div>		
<p><b>If any of the above information is incorrect or you wish to publicise your organisation then please contact Roger Scurrall on 01621 776341 or email <a href="mailto:stthomaspc@btinternet.com">stthomaspc@btinternet.com</a></b></p>		

## From the Vicarage

Dear Friends,

As we move into September, we are delighted to have had Phoebe baptised at the Church where we got Married in Sussex on Saturday 23<sup>rd</sup> August. It was a wonderful occasion with all of our family.

On Sunday 3<sup>rd</sup> August, we had a wonderful Confirmation Service at St Peter's Chapel in Bradwell on Sea, as part of the Chapel Summer Evening Services. We had candidates from across the Benefice in Bradwell on Sea, Tillingham and St Lawrence. It was a wonderful occasion with the Bishop of Bradwell, Bishop Adam. The whole Summer Series was a great summer of services from different denominations across the Church. I was deeply moved by the Orthodox Service, where the continued singing of the liturgy, readings and prayers moved me in worship.

All of these services, including the Pilgrimages, Weddings and Baptisms we have had over the summer with the community, have deeply increased my faith and encounter with God, as we turn towards God, he turns towards us in Grace and Love.

God bless,

*Reverend Steven*



## **.Bradwell-on-Sea WI meeting**

**Wednesday the 13<sup>th</sup> August at Cressing**

**Temple Barns**

**A day at Cressing Temple Barns and its  
Tudor walled garden**



This month, instead of gathering in the village hall, we ventured out for our summer outing to Cressing Temple Barns, a site steeped in history and charm.



We began with a guided tour of the magnificent Tudor walled garden, a faithful reconstruction of the late medieval and Tudor gardens that once stood here. Enclosed by the original 16th-century brick walls, the garden reflects a time when such spaces were not only for beauty, but for providing food, healing plants, and herbs for household use. At its heart is a striking brick fountain with four spouts, symbolising the four rivers

of paradise, while a raised platform offers a perfect vantage point to admire the intricate patterns of the knot garden.

The planting is based on meticulous historical research, featuring box-edged knot gardens, a nosegay garden, medicinal plants, and a vegetable plot — all species that would have been familiar to gardeners of the Tudor period.

After our tour, we headed to the Tiptree Tea Room for a delicious lunch (which we would recommend!)

It was a really enjoyable outing, combining history, beautiful surroundings, and good company! one we will be sure to remember and, no doubt, repeat in the future.

Our next meeting will be in the village hall, where we will be joined by Steve Lester for his talk 'Insights of a provincial auctioneer' on the 10<sup>th</sup> September.

New members are always welcome; there is just a small fee of £5 for non-members, so please feel free to come along! If you have any questions about what we get up to, you can contact Sue Pirret on 07824696807 or

[sue@dailygrindimports.com](mailto:sue@dailygrindimports.com)

*Alice Nightingale*

## News from RAF Bradwell Bay

Changes in leadership both Country and of RAF Bradwell Bay came in 1945. On 25th June 1945 Wing Commander Geoffrey Dalton Stephenson took over as the base at Bradwell. Stephenson had spent some time as a POW including time spent in Colditz.

The wartime coalition government lead by Prime Minister Winston Churchill was defeated by the Labour Party in the General Election on Thursday 5th July 1945, and Clement Attlee become the Prime Minister. Perhaps the country, while revering Churchill as a Wartime leader, voted for change and to move forward. Churchill needed a rest after the stress of wartime leadership. He was after all in his late 60's.

While VE Day was celebrated extensively at RAF Bradwell Bay with a large parade and parties, the war had not ended. Fighting in the Far East continued for another 3 months. The war ended when the USA dropped 2 atomic bombs on Japan. One at Hiroshima on 6<sup>th</sup> August and the second on Nagasaki on 9<sup>th</sup> August. So, the world entered the Nuclear Age. Clem Attlee was aware that the bomb was going to be used although he didn't know details.



Bradwell on Sea was to host the peacetime use of nuclear power in the form of the Bradwell Power station.

The Japanese Emperor gave an unconditional surrender on the 15<sup>th</sup> of August, a day we celebrate now as VJ Day. This was marked at RAF Bradwell in a more subdued manor. The Station Commander declared 2 days of rest, as the Operational record book shows:



15.8.45.	V.J. DAY. This was treated as a Rest Day by the Station Commander's orders.
16.8.45.	B. VJ + 1 day. Also, a day of Rest.

RAF Bradwell Bay was to continue as an airbase for 3 months.

We are building a contact list of relatives, which is ever growing. There is no distinction between rank or roles, everyone who had a relative at RAF Bradwell Bay should contact us.

The RAF Bradwell Bay Preservation Group has a Facebook page RAF Bradwell Bay Preservation Group and our website [www.rafbadwellbay.com](http://www.rafbadwellbay.com).

We are recruiting trustees to work alongside our management committee. If you have skills such as business-related skills, we could use them or if you would like to get involved in this local project.

The RAF Bradwell Bay Preservation Group seeks to preserve the history of the RAF in Bradwell on Sea. We are planning for a museum near the memorial.

You can contact us via [rafbadwellbay@gmail.com](mailto:rafbadwellbay@gmail.com)



RAF BRADWELL BAY  
PRESERVATION GROUP

## **Bradwell-on-Sea Village Hall Trustees 100 Club**



**Charity Number 803054**

The Bradwell Village Hall 100 Club draw results for August 2025 are as follows.

**1<sup>st</sup> Prize, Ticket 41, Ann Hart, £20.00**

**2<sup>nd</sup> Prize, Ticket 70. Paul Roughly, £10.00**

**3<sup>rd</sup> Prize, Ticket 15, Joe Lee, £5.00**

The next draw takes place on the 1st September. If you would like to join the 100 Club, please fill in form available in the Community Shop of the Village Hall or phone or Text 07710868491.

## The Othona Community

Music week 9<sup>th</sup> to 16<sup>th</sup> August, was a special one, led by our Sarah and Simon Thompson, celebrating 40 years of Live Aid. Sharing the community spirit, the 60+ choir of people who had never sung together before, put on two spectacular shows, one on Thursday afternoon at Downhall, the other filling St Thomas Church with music and dance. The week following was Arts and Crafts Week, another favorite, much enjoyed by adults and children alike, led by Cathrin Jones. – and more family fun from 23<sup>rd</sup> to 30<sup>th</sup> August as former Wardens Gail and Matthew Dell shared All the Fun of the Fair. The first mid-week session of September is A Time to Simply Be: still time to book for a day, come along to enjoy the peace and tranquility of Othona. We have a Harvest Weekend, 12-14 September, and an Autumn Retreat 10-12 October. Details of all these events and more may be found on our website, or pick up a leaflet.



On 16<sup>th</sup> August Othona held its annual Open Bradwell Centre Committee Meeting, where everyone who is interested may join in, hear what is proposed, and be involved in the administration and decision-making at the Centre. It was decided to reconvene a Programme Planning Group to plan the programme of events and activities for next year: if any Village View reader has any suggestions, do share them – or offer yourself as a speaker, all our weeks are led by volunteers who have a huge range of skills and interests to share. Volunteers are also needed to fill vacancies: a Trustee for Safeguarding, and a Bradwell Centre Committee member. Filling resident team vacancies looks promising, with hopes that a new cook and a deputy warden will soon be settled in. This raises the question of staff accommodation now under discussion, as the spaces we have are pretty restricted.

Water conservation was considered an important topic for all, both as a response to climate change and to our rather limited mains supply – although only those with VERY long memories remember when we carried back water from the tap by the chapel to the original Community huts and tents in the Old Field. No Charity business meeting would be complete without considering the question of finances and, although Othona is doing well compared to many organisations, it will still be necessary to put up the cost of staying next year. Othona always tries to keep fees down, and offer bursaries if needed, but with a basic 24 hour cost of just £50 per adult all-inclusive, we do encourage people to pay more, or donate, if they can afford to support those who are struggling financially. Finally – buses! As with all those living locally, the decline of our local bus services is felt by Othona,

and contact is being made to aim for reinstatement of a service to Othona.

An update from our new Warden/Manager David Jenkins, completed business of the day – followed by a delicious cream tea prepared, as ever, by our team of volunteer cooks.

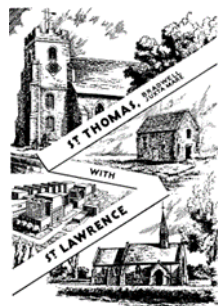
Othona is accessed through East Hall Farm, East End Rd, Bradwell on Sea, through the wind powered gate: exit token from the office. Our Manager/Warden is David Jenkins. Website [www.othonaessex.org.uk](http://www.othonaessex.org.uk). Email [bradwell@othona.org](mailto:bradwell@othona.org). Telephone 01621 776564.

## October Village View

All copy for the October Village View should be sent to Roger Scurrall by phone (776341), posted through the letterbox of 6 St Thomas' Row, Bradwell, or by email to the address below, all by September 15th.

Copy may also be submitted as a text or Microsoft Word or Publisher file, either on CD or, better still, by email to [stthomaspcc@btinternet.com](mailto:stthomaspcc@btinternet.com). We ask you to limit your article to 300 -350 words and please include a picture.

We apologise but no articles will be accepted after September 15th. If you belong to an organisation that does not yet submit articles for the Village View we would like to hear from you even in longhand if you do not have access to a computer. Any news you have is always very welcome.



## Prayer for September 2025

Heavenly Father, September is the month of new starts for so many. New starts can be exciting, but they can also be daunting. We don't always know what to expect and sometimes we feel as if we are on our own in a strange new place, or situation.

Help us to know that, as your people, we are never alone. You promised, through Jesus, to be with us always and You gave us Your Holy Spirit to empower us.

In some ways every day is a new start – a new gift from You. As we unwrap the gift of each new day, this September, encourage us to receive it confidently and expectantly. Help us to know that we can do all things, through Christ Jesus, who strengthens us. We can! In Jesus' name, Amen.

*By Daphne Kitching*





St. Nicholas Church, Tillingham  
invites you to a



Friday October 17th  
at St. Nicholas Church, Tillingham  
Starting at 7.30pm.

***Tickets £7.50***

*(Bring you own drinks and nibbles)*

Reserve your tickets by calling  
**Mick Grimes on 0795 2222911**

Bring a team, (8 max) or join a team for an evening  
of Fun, Frivolity and Finking

## SEPTEMBER SERVICES

Time	Service	Church	Readings
5th	Friday		
12:00	Communion with Lunch	St Lawrence Church	
7th	Trinity 12		
10:00	Communion	St Thomas Bradwell	Jeremiah 18;1-11 Philemon 1-21 Luke 14;25-33 Psalm 139; 1-5,12-18
10:00	Morning Worship	St Nicholas Tillingham	
10:00	Communion	St Lawrence Centre	
15:00	Evening Service	St James Dengie	
14th	Holy Cross Trinity 13		
10:00	Communion	St Nicholas Tillingham	Jeremiah 4;11-12,22-28 1 Timothy 1;12-17 Luke 15;1-10 Psalm 14
10:00	Morning Café Church	St Thomas Bradwell	
10:00	Morning Worship	St Lawrence Centre	
18:00	Evening Service	St Lawrence Church	
21st	Matthew Trinity 14		
08:00	Holy Communion	St James Dengie	Jeremiah 8;18 - 9.1 1 Timothy 2;1-7 Luke 16;1-13 Psalm 79;1-9
10:00	Harvest Communion *	St Lawrence Church	
10:00	Morning Worship	St Lawrence Centre	
10:00	Morning Worship	St Nicholas Tillingham	
18:00	Evening Service	St Thomas Bradwell	
25th	Thursday		
09:00	Communion	St Peters Chapel Bradwell	
28th	Trinity 15		
10:00	Communion	St James Dengie	Jeremiah 32;1-3a,6-15 1 Timothy 6;6-19 Luke 16;19-31 Psalm 91;1-6,14-16*
10:00	Café Church	St Thomas Bradwell	
10:00	Morning Worship	St Lawrence Centre	
10:00	Morning Worship	St Lawrence Church	
18:00	Evening Service	St Nicholas Tillingham	
Oct 3rd	Friday		
12:00	Communion with Lunch	St Lawrence Church	

Time	Service	Church	Readings
5th	Trinity 16		
10:00	Harvest & Pet Communion *	St Thomas Bradwell	Lamentations 1;1-6 2 Timothy 1;1-14 Luke 17;5-10 Psalm 137
10:00	Morning Worship	St Nicholas Tillingham	
10:00	Morning Worship	St Lawrence Centre	
15:00	Harvest Service	St James Dengie	

## Diary of 2025 Events

Below are a list of dates that are happening throughout 2025. If you or your organisation have dates that you would like advertised, please email details to [stthomaspcc@btinternet.com](mailto:stthomaspcc@btinternet.com) for inclusion. It is hoped to publish events every month for the coming three months and every Quarter for the year ahead.

### September

4th Thursday Club St Thomas Church 2pm, 10<sup>th</sup> Women's Institute Village Hall 7.30pm, 15<sup>th</sup> Parish Council Village Hall Committee Room 7.30pm, 16<sup>th</sup> Village Hall Trustees Village Hall 7.30pm, 18<sup>th</sup> PCC Meeting at 7.00pm, 24th Nature in our Neighbourhood,

### October

2nd Thursday Club St Thomas Church 2pm, 5<sup>th</sup> Harvest Festival Service 19.00am, 8<sup>th</sup> Women's Institute 7.30pm Village Hall, 20th Parish Council Village Hall Committee Room 7.30pm, 29th Nature in our Neighbourhood, 30<sup>th</sup> PCC Meeting at 7.00pm

### November

6th Thursday Club St Thomas Church 2pm, 12th Women's Institute 7.30pm Village Hall, 17th Parish Council 7.30pm Village Hall Committee Room, 26th Nature in our Neighbourhood 7.30pm Village Hall Committee Room

# Swan Saxophone QUARTET

Sunday 21<sup>st</sup> Sept

3pm

St. Andrew's Church  
Hall, Althorne

Ticket includes Tea & Cake  
There will be a Raffle!

In aid of Church Repair Funds



# The tale of the RICH FOOL



JESUS OFTEN TOLD  
STORIES WITH  
HIDDEN MEANINGS

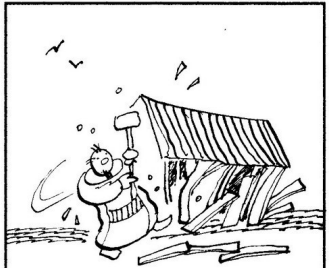


ONE STORY WAS ABOUT A MAN  
WHO HAD LOTS OF LAND WHICH  
GREW WONDERFUL WHEAT.

I HAVEN'T ANYWHERE TO  
KEEP ALL THIS FOOD



I KKNOW! I'LL PULL DOWN  
MY BARN'S AND BUILD  
BIGGER ONES



THE MAN DEMOLISHED HIS  
OLD BARN'S....

...AND BEGAN TO BUILD  
NEW ONES.



SOON I'LL BE THE RICHEST  
MAN IN THE TOWN!



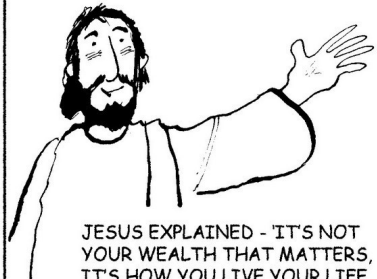
I'M SO LUCKY - I CAN  
EAT, DRINK AND BE  
MERRY!



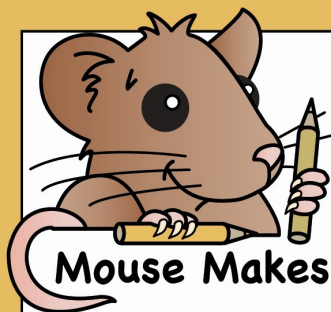
BUT THAT VERY NIGHT,  
THE MAN DIED!



WHAT GOOD WERE HIS  
RICHES NOW?



JESUS EXPLAINED - IT'S NOT  
YOUR WEALTH THAT MATTERS,  
IT'S HOW YOU LIVE YOUR LIFE  
THAT'S IMPORTANT



## Mouse Makes

"Let us fear and respect the Lord our God.  
He gives **autumn** and **spring** rains  
at the right time. He makes sure that we  
have the harvest at just the right **time**."

- from Jeremiah 5:24

"God... gives you **rain** from  
heaven and good harvests  
at the right times. He gives  
you plenty of **food** and  
fills your hearts with **joy**."

- from Acts 14:16-17

"May the people **praise** you **God**...  
The **land yields** its harvest, God,  
our God **blesses** us."

- from Psalm 67:5-6

"**Honour** the  
**Lord** with your  
wealth and the  
first part of  
your **harvest**."

- Proverbs 3:9

"So the one who **plants** is not  
important, and the one who **waters**  
is not important. Only **GOD** is  
important because He is the one  
who makes things **grow**."

- 1 Corinthians 3:7

D E B R E A D C R O P S  
A P L A N T S G T I M E  
S L O I J B P R A I S E  
C O R N O L R A H G O D  
A U D H Y E I I A S L S  
T G R O W S N N R O W E  
T H A N K S G I V I N G  
E F U O W E Y I E L D S  
R O T U T S I L S O W O  
M O U R U R W A T E R S  
D M A B A R N P I C K  
S U N F I E L D R E A P

Find the words in **bold** type in the bible quotes in the  
wordsearch then look for the words below too!

PLOUGH • FIELD • SOIL • SCATTER • SOW • SEEDS • SUN  
REAP • PICK • CROPS • GRAIN • CORN • BARN • BREAD • THANKSGIVING





## **Waterside Cleaning Services**

**DOMESTIC CLEANS**

**DEEP CLEANS**

**END OF TENANCY CLEANS**

**BUSINESS CLEANS**

**CONTACT US NOW**

**07939988922**

**01621 333099**

**WATERSIDECLEANS@GMAIL.COM**

## **Advertisement in Village View**

Do you want to Advertise your Business in Village View? We have a circulation of 500 households in Bradwell and St Lawrence and are looking for advertisers to advertise their Club or Bussiness in Village View.

Email; stthomaspcc@btinternet.com

Phone; 01621776341.

## **Portal Solutions**

**Professional  
carpet,  
upholstery & rug  
cleaning  
Call Helen on  
07949142784**



**01621 778215**

**bradrogersgroup.com**

☒ **PLUMBING**  
☒ **HEATING**  
☒ **ELECTRICS**  
☒ **AIR-CON**

☒ **BATHROOMS**  
☒ **KITCHENS**  
☒ **HOT WATER**  
☒ **BUILDING**



**EastEnd  
Quality  
Chippy**

**OPEN Tuesdays to Sundays  
12—8.30pm.**

**Eastlands Meadows Country Park,  
East End Rd. Bradwell-on-Sea,  
CM0 7PP Tel 01621503008**



# Brush Away Pest Control

**Domestic and Commercial  
Pest Control Services**

- RSPH Qualified Technician
- Public Liability Insured
- Friendly and Professional Service

**Contact Jonathan Brush**

☎ **01621 779589**

📱 **07787 820473**

✉ [brushawaypc@hotmail.com](mailto:brushawaypc@hotmail.com)

[www.brushawaypestcontrol.co.uk](http://www.brushawaypestcontrol.co.uk)



# A.G. Smith

Established 1912



- Private chapel of rest
- Mercedes Benz hearse & limousines
- 24 hour service
- Hand crafted memorials
- Home visits by appointment
- Prepayment funeral plans



**Southminster – 01621 774 557**  
Hallmark House, 44 Station Road,  
Southminster, CM0 7EW

**Maldon – 01621 854 293**  
7 Spital Road, Maldon, CM9 6DY

[agsmithfunerals.co.uk](http://agsmithfunerals.co.uk)

Serving our local community since 1912



# GATEHOUSE

**Carpentry and Joinery  
& Building Services**



- \*Doors, Floors laminate or solid wood \*Decking, \*Kitchens, \*Windows
- \*Doors Wood or UPVC (All Colours) \*Alterations, \*Loft, Garage conversions
- \*UPVC facias, soffits, gutters \*Brickwork, Driveways, Conservatories
- \*Roofs cut and pitched, \*Design and build service, \*Plastering
- \*Purpose made Joinery, \*Stairs and Spindles

**Tel: ,07546765233, 01621776743, [gatehouse-carpentry@live.com](mailto:gatehouse-carpentry@live.com),**

## EGGS FOR SALE

**£1.20 PER BOX OF 6**

**WEEKEND ONLY**

(subject to availability)

**OUTSIDE GREEN GATES**

**@ LITTLECROFT, MALDON ROAD  
BRADWELL-ON-SEA CM0 7HT**

## MGJ LANDSCAPES & BRICKWORK

**All work undertaken phone me  
for a Quote.**

**07539 786486/01621776403**

Horse-drawn carriages  
Home Visits

Private Chapels of Rest  
Pre-payment plans



*Paul J King*  
FUNERAL DIRECTORS



**01621 784884 (24 HOURS)**

[www.pauljking.com](http://www.pauljking.com)



*Down Hall*  
Residential Home

Where quality is *never* compromised



- A specially designed wing to care for those suffering from Dementia
- A large part of the home designated to care for the Elderly
- Day and respite care
- Beautiful historical building with stunning scenery and grounds
- Friendly, caring and well trained staff

Manager: Mrs. Karen Johnson Directors: Peter, Rita & Simon Patten  
Down Hall Residential Home, Down Hall Road, Bradwell-on-Sea, Southminster, Essex CM0 7QP  
Tel: 01621 776509 [www.downhallcare.co.uk](http://www.downhallcare.co.uk)

## Bradwell Community Shop & Post Office



Run by volunteers, **YOUR** community shop  
at the heart of village life.

We stock all the basics for your daily needs  
as well as drinks & hot food  
and all at competitive prices.

Come in and be surprised.

**Tel: 01621 776274**

[www.bradwellcommunityshop.co.uk](http://www.bradwellcommunityshop.co.uk)

### Opening Hours

Mon-Fri 7am-6pm  
Sat 7am-4pm (summer)  
7am-1:30pm (winter)  
Sundays & Bank Holidays  
9am-midday  
Post Office: Mon-Sat  
9am-midday

**Michael Debono and Lorraine Pace  
welcome you to**

## The Green Man Inn

**Bradwell Waterside, Bradwell-on-Sea CM0 7QX**

Phone:— 01621776226

Mobile 077991555201

Email:- [mykibono@outlook.com](mailto:mykibono@outlook.com)

web site:-[http:// greenmanbradwellonsea.co.uk](http://greenmanbradwellonsea.co.uk)

# 'R' GLASS LTD

## INSTALLATIONS



*The Sign of Quality*

## UPVC WINDOWS - DOORS - CONSERVATORIES



No deposits taken for any installation work

FREE design & quotation for all installation work

Replacement UPVC fascia, soffit & guttering

◆ Insurance backed guarantees on all FENSA registered installations

◆ Bowaters extruded bevelled & sculptured frames

◆ Tongue & groove shiplap cladding



### Existing Double Glazing Repairs

Replace misting & broken insulating glass units

Upgrade & change existing glass units to i.e. Leaded, Georgian or Clear

Replace patio door wheel carriages

◆ Conservatory roof - Repairs, upgrades or replacements

◆ Replace window, door handle & hinges

◆ Re-align dropped doors & windows

**Which?**  
Trusted trader

### Tel: 01621 772630

Email: [sales@rglass.co.uk](mailto:sales@rglass.co.uk) Web: [www.rglass.co.uk](http://www.rglass.co.uk)  
Units 2 & 3, Hall Road Ind Est, Southminster CM0 7DA

**FENSA**  
Registered  
Company



**PAROCHIAL INFORMATION:****St Lawrence****Rector****Rev Steven Poss****779620****Churchwardens:****Jane Pudney****772345****Gerry Lewsey****07516347520****Village View**

Eunice

778904

**P.C.C. Secretary**

Victoria Eley V.eley@icloud.com

**Rainbows**

5 – 7 yrs

**Brownies -**

7 - 10 yrs

**Guides - :**

10 - 14 yrs

for information phone 07757636446 or email

[enquiries@girlguidingsexne.org.uk](mailto:enquiries@girlguidingsexne.org.uk)**District Councillor**

Linda Hayward

Clr.linda.hayward@maldon.gov.uk

Wendy Laybourne

Clr.wendy.laybourne@maldon.gov.uk

**Parish Council Chairman**

Marian Gibson

Clrgibson@stlawrence-pc.gov.uk

Kevin Money

**Clerk to the Parish Council**

Kevin Money

Clerk@stlawrence-pc.gov.uk

Council meet 4th Wednesday of each month in Village Hall

**Stone Sailing Club**

(weekdays)

779344

**Church Flowers**

Rev S Poss

779620

**Children Society**

Eunice Siggins

778904

**St Lawrence Singers**Friday at 5.45-7.00pm, Church Centre  
Shirley Masterson 07956799989**Bridge Club**

Mondays at 1.30pm, Church Centre

**St Lawrence Social Club**

1st Wednesday of Month at Village Hall.

Secretary Gwen Adams 778386

**Coffee Morning**

Tuesdays at 10.30am in the Church Centre

**Wednesday Board Games**

2.00—4.00pm, St Lawrence Church Centre

**Fridays Hobbies and Leisure**

10am, Church Centre

**St Lawrence Art Group**

Thursdays 10.00—12.00 noon Sailing Club

Bob Dorks 778392

**Church Centre Bookings**

All Church Centre Bookings.

Eunice Siggins 778804

**St Lawrence Village Hall**

Bookings Marion Gibson 778102

**The Friends of St Lawrence Newlands Church**

Carole Taylor 778523

John Barnes 779267

**Table Tennis**

Tuesdays 3-5pm at Village Hall

**Diddydots Pre School**Monday—Friday 8am – 2pm Term Time  
Village Hall**Wendy Butterwick's Keep Fit**Monday, Tuesday and Thursday  
7.30pm—8pm, Village Hall**Age Concern**01245) 264499 Two Rivers Association  
for Age Concern**Mobile Library**

Every three weeks Thursdays

East End Rd outside church 11.40—  
12.10**Local Policing Team phone**

Non Emergency 101

Emergency 999

**Crime Stoppers**Anonymous Crime Reporting  
0800555111**The Dengie Medical Centre**

Tillingham 778383


**The Trinity Medical Centre**

Mayland 745400

**William Fisher Medical Centre**

Southminster 772360

**If any of the above information is incorrect or you wish to publicise your organisation then please contact Eunice Siggins on 01621 77778904**



**CALL PAUL**

Your Local Handyman  
for  
Garden Maintenance  
and DIY Jobs.

Phone: 07919071113 Discounted Rates for OAPs

## BULL'S EGGS

In name only.

No more hens, ducks or geese, but  
**plenty of seasonal jams and jellies,  
chutneys, pickles and marmalades,  
and home grown fruit and vegetables.**

**\*Daily from gate or house.\***

**Ruth and Dave Bull, 5 Coastguard  
Cottages, Mill End, Bradwell-on-Sea,  
CM0 7HN.**

**Tel 01621 776565**

**Email [ruth@bullseggs.org](mailto:ruth@bullseggs.org).**

## ANCHOR ACADEMY OF DRIVING SKILLS.

ARE YOU LOOKING TO BECOME A CONFI-  
DENT, SAFE DRIVER?

SPEAK TO YOUR LOCAL APPROVED DRIV-  
ING INSTRUCTOR "CARRIE"

TO DISCUSS YOUR REQUIREMENTS  
DISCOUNTS FOR NEW DRIVERS  
AND BLOCK BOOKINGS

CALL - 01621 842282 / 07966 505 755

## BURNHAM SWEEPS

Professional Chimney Sweeping Service

Dean Lawrence

T: 01621 785007

M: 07533 792139

E: [dean@burnham-sweeps.co.uk](mailto:dean@burnham-sweeps.co.uk)

[www.burnham-sweeps.co.uk](http://www.burnham-sweeps.co.uk)



## J. P. MEEHAN

**Plumber,**

Munkins Cottage

Bradwell-on-Sea

Tel 01621 776370

## ELSPETH COWELL

Podiatrist / Chiropodist

SRCh. D PodM. MSCh, HPC Reg.

Cold Laser for muscle injuries

Insole Therapy

01621 779915 Home Visits

[elspethcowell.uk](http://elspethcowell.uk)

## SARAH GREEN'S ORGANICS

**Are you interested in a delivery of  
local organic vegetables?**

We grow a wide range of Seasonal Organic  
Vegetables on our farm in Tillingham, Essex.

For more information & to place an order please visit

[www.sarahgreensorganics.co.uk](http://www.sarahgreensorganics.co.uk) or phone 01621 778844.

*Always Seasonal, Always Fresh!*

**Follow Sarah Green's Organics**



ALL TYPES OF REPAIRS CARRIED OUT ON  
WASHING MACHINES,  
TUMBLE DRIERS, REFRIGERATORS  
FREEZERS, DISH WASHERS & etc.  
Supplies of New Machines & Spares

## Alan Taylor

Family Business Established 25years in the area  
Spares available and new appliances supplied

Telephone: 01621 773709

Mobile 07885 483595