

Rectors Letter

Dear Friends,

As we move into Ordinary Time and the Trinity season in the Church Calendar, we look back on the Lent, Easter, Ascension and Pentecost celebrations to take us into the year and the summer months.

In Bradwell, we look forward to the evening summer services at the Chapel starting on 1 July.

At St Lawrence and in Bradwell, we travelled around the Parish for Rogation Day in May to pray for the surrounding land, sea, and those who work on them.

As we approach the summer months, we remember well known Christian figures. I like to read their stories. In June we have Barnabas; Justin the Martyr; Alban and Evelyn Underhill. It is an inspiration to read about them, and the summer is an ideal time to take time out and go on retreat.

There are many places to go. I'm off to St Beuno's in Wales, but not until later in the year.

Have a good summer & God Bless,

Rev Steven

July Magazine

All copy for the July magazine should be sent to Roger Scurrall by phone (776341), posted through the letterbox of 6 St Thomas' Row, Bradwell, or by email to the address below, all by **Saturday June 9th**.

Those living in St Lawrence may give copy to Shirley Lea at 51 Main Road (779403) by this date. Copy may also be submitted as a jpeg, text or Microsoft Word or Publisher file, either on CD or, better still, by email to stthomaspc@btinternet.com.

If you belong to an organisation that does not yet submit articles for the magazine we would like to hear from you. Any news you have is always very welcome.

S.O.S - CAN YOU HELP ???

1ST Bradwell Cubs are looking for an adult (male or female) to replace a current leader who wishes to retire.

We meet at the village hall on Thursdays 6pm - 7 30pm - term time only.

If you think you would enjoy working with children age 7 1/2 to 11 and may be able to help, or just want to find out more, please contact Marie on 776554 or just come along & see us.



Remembering those from Bradwell-on-Sea who were killed in action 100 years ago in World War I

At our Sunday service in St Thomas Church Bradwell-on-Sea on June the 24th, we will be remembering William Kiddle, Petty Officer Stoker K/6439, who was killed in action aged 30 in the First World War 100 years ago on 24 June 1918.

Petty Officer Stoker K/6439, H.M. Submarine "D6", Royal Navy, died 24th June 1918, aged 30. He was the husband of Minnie S. Kiddle, of Bradwell-on-Sea, Southminster, Essex.

William was born in 1887 in the Bethnal Green registration district. In 1913 he married Minnie Sarah Susannah Potter, the daughter of Samuel and Elizabeth Potter. Samuel was a Horseman and the family lived on the Maldon Road. In 1911 Minnie worked for John Chillingworth at Bradwell Hall as a cook and dairy maid. She was then 21. In 1924 Minnie remarried, this time to John L Bacon.

William has no known grave. He is commemorated on CHATHAM NAVAL MEMORIAL, Kent. Panel 29.

The submarine "D6" was launched on 23rd October 1911 and was sunk on 26th June 1918 by the German submarine UB73 off the North coast of Ireland. There were two survivors who were taken prisoner. Their post-war report apparently prompted the British to conclude that the torpedo that sank her had employed a magnetic pistol.

Eternal Father, Strong to save
Whose arm hath bound the restless wave
Who bids the mighty ocean deep
Its own appointed limits keep
Oh, hear us when we cry to thee
For those in peril on the sea.

*They shall grow not old, as we that are left grow old:
Age shall not weary them, nor the years condemn.
At the going down of the sun and in the morning,
We will remember them.
We will remember them.*

***Marry when June roses blow
Joy and sorrow both you'll know.***



A fairly safe prediction, but how reliable is our June weather?

This year may follow the average of 20° C maximum day temperature, 7 hours of sunshine per day, 11 days with some rainfall, 11° C minimum night temperature and 52 mm of monthly rainfall, with a high UV index of 6. At times we can have the comfortable conditions we may expect completely overturned by freak occurrences.

In 1897 a severe hailstorm hit Essex on 24th June, ruining crops, smashing glass and injuring people who were out in the open. The day was hot, with 88°F (31°C) being recorded at Chelmsford. Around 2.00pm the sky was a copper colour and thunder was rolling ominously. Within the hour the storm struck. Trees were flattened, lumps of ice the size of a hen's egg fell, beating the crops into the ground and birds and animals were killed. Some twenty minutes later the storm ceased leaving a covering of and devastation in its wake.

Six years later there was a remarkable fall of rain between 12th and 20th June. Essex bore the brunt of this deluge, recording 60 hours of continuous rain totalling over 100mm. Rivers rose rapidly and severe flooding occurred in towns across the county. Chelmsford, Romford, Laindon, Dunmow and others were inundated. At Beeleigh the tidal River Blackwater rose three feet higher than usual.

In our changeable climate it is unusual for a weather system to last for a long period, but 1921 proved an exception as the driest year on record, when a high pressure system persisted week after week. Bradwell, in June, was almost rainless. However, in Chelmsford there was an unusual result as the death rate fell, believed to be because more people were going out in the fresh air.

In more recent years, after a mild winter, conditions changed in April 1975 with six inches of snow in Dunmow, and on 2nd June the county cricket match between Essex and Kent at Castle Park, Colchester, was halted by snow. These events were not repeated in the following year as at Maldon a temperature of 90 F (32 C) was reached on 23rd June, although that was exceeded the next day in Basildon, and then London reaching 95 F (35 C) on the 26th.

With the many new developments in meteorology, weather forecasting has become more reliable than some of our old sayings, but we are still subject to the vagaries of our climate and are powerless to prevent unusual events. We must just hope that this year will produce no unwelcome records.

Musicality


A great deal of the music that we come across is, or has been, specially written for an occasion. This ranges from versions of 'Happy Birthday', which must be sung hundreds of times a day before the blowing out of candles, to Handel's wonderful 'Zadok the Priest' which was written for the coronation of George II and has been sung at every coronation ever since.

We hear 'For he's a jolly good fellow' at retirement parties and 'Congratulations' when someone is celebrating success, and 'Auld Lang Syne' has been heard at farewells for many, many years.

Mendelssohn's 'Wedding March' is still very popular at church weddings but times are changing, and Pachelbel's 'Canon in D' is a very popular alternative. Many couples now choose to leave the church to 'I will always love you', or some other similar modern song.

Similarly, while music chosen for funerals is generally classical and fairly quiet and sombre, many coffins are carried from the church to 'I did it my way', 'Time to say goodbye' or some other song suited to the deceased. Perhaps 'Postman Pat' for the local postman or 'I'd like to teach the world to sing' for the music teacher. I am sure you can think of many 'appropriate' combinations.

I heard a commentator on television the other day, who seemed to suggest that William Monk had written his famous hymn 'Abide with me' for supporters to sing on the football terraces! I am sure nothing was further from his mind but it has certainly become a football anthem.

Music for occasions certainly adds to our enjoyment and sometimes our understanding of the events. 

Music Lover from St Lawrence



From the Wensleyhouse - Chloe & Cherry-Blossom!

As you may remember Frederica, my black Wensleydale ewe, met Mill House Marvin, a black Wensleydale ram, in November, and we were expecting lambs around the 16/17 April. Well, Frederica hung onto them until the 23rd!! We got an inkling that things were getting closer on the Sunday. Frederica kept sitting down, stretching to count the clouds, but then getting up again and wandering off to munch more grass whilst we watched with disappointment!

In the night checking her every three hours, she was standing up every time I looked. Unusual, and it should have made me more aware, but in the middle of the night it's difficult to be alert!

Just before I was due to check them again at about 4.45am Ethel gave a loud intense baaaaarrrrr! And again and again! That got me out of bed very quickly, only to find I'd missed the event once more!

There was Frederica calling to her second lamb as she licked it. Even though it was the 23rd April at 5am it was fairly cold in the field so I got both lambs and Frederica, who protested - rather worried, I think, that she'd left one of them behind - into the Maternity Ward and put the hurdle across so the others could see in but the young family could be undisturbed.

Frederica proved to be such a good mum this time round! She licked both lambs, calling to them and licking them and making sure there were still two.



She even got them both suckling despite some very unhelpful, but well meant intervention on my part, as most well meant intervention turns out to be!

On closer inspection both lambs were found to be girls again, and after much deliberation we decided to call them Chloe and Cherry-Blossom. Cherry-Blossom after the most magnificent cherry tree that had gone from bare winter branches into full blossom during the week we had been waiting for their arrival.



They stayed in the maternity ward for the day to get to know each other, but by early Tuesday morning Frederica had had enough of being in the shed! She was desperate to show off her little girls to the wider family, and marched out of the shed too quickly for the little day old lambs! But such a good mum, she came back for them, made them follow her, and lead them, baa-ing loud and low all the time, past their big sisters, Aunty Ethel and cousin Bella! In true family fashion the big sisters, especially Bess, were not very impressed. She went up to Cherry-Blossom, sniffed but jumped and ran away when Cherry-Blossom moved! Baarbara didn't even come

close. But cousin Bella was very impressed! She sniffed noses very gently and only turned tail when warned from Frederica that they were her lambs!

Poor Aunty Ethel, was overcome for a time and hid behind a tree, or tried to hide as the tree was smaller than she was, watching wistfully. But not for long! In a downpour of the spring rain a few days later I found Chloe and Cherry-Blossom in the far corner of the shed with Ethel standing between them, the other sheep, and the door, with Frederica sitting outside in the rain! Ethel is the true matron of the flock and knows that Aunties babysit so that Mums can get a of peace!



the
in
bit

Q | **St Lawrence in Old Photographs**

People gathered at St Lawrence Church on 24 March to be treated to a fascinating

talk by Kevin Bruce illustrated by Old photographs of St Lawrence which traced the history of St

Lawrence on the Hill and “The Stone” waterside.

Long ago people seemed keener to record the moment in photos and usually wore all their finest clothes for the occasion (or bathing suits!)

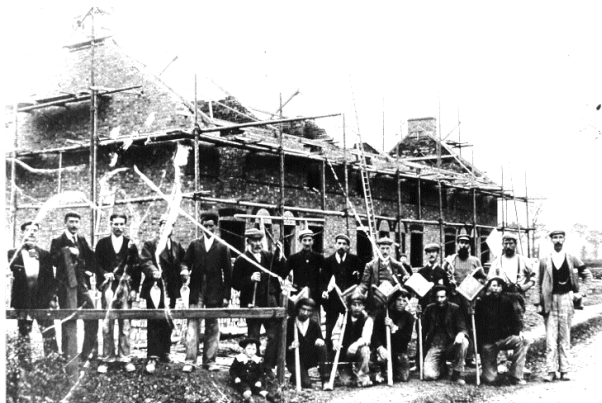
Kevin continues his work in trying to keep his record of our history up to date so if you have any old photos or

photos (digital or otherwise) of more recent events he would be pleased to hear from you via this magazine.



Manyweathers/Council Cottages, Bradwell-on-Sea

Walter and most of the Page family lived at the 'Council Cottages', (Manyweathers Cottages) a most unusual address before 1919. He would have known this house from about the age of eight.



*Dowsett's men building
Manyweathers Cottages in
1905.*

The state of many cottages in the villages was a cause for concern, as shown by the evidence given to the Royal Commission on Housing of the Working Classes, 1884.

This report mentions Bradwell, Tillingham, Steeple and Althorne where there were cottages with one living room and one bedroom occupied by families as large as ten or twelve. There would have been no water laid on and no indoor conveniences. If a member of the family fell ill there was no possibility of separate accommodation so the illness inevitably spread rapidly. The general condition of these houses was 'Very sad indeed', and the worst village the witness, G M Ball, had visited was 'Steeple Bromstead in the Dentgie Hundred (*sic*).'

A programme of council house building started in earnest after the First World War following on from the [David Lloyd George's](#) government's [Housing Act of 1919](#). but clearly Bradwell was well ahead of the general national movement. The Maldon Rural District Council was the third rural authority to take up the challenge and Bradwell reaped the benefit. One of the prime movers in this forward-looking policy was Dr John Thresh, the County Medical Officer of Health for Essex.

Dr Thresh was one of the early pioneers who established the importance of environmental hygiene. Water supply and housing conditions were two of the areas of his greatest concern, and in 1906 he gave evidence to the Select Committee on Housing Bill. In the course of this enquiry Dr Thresh stated that the parish council of Bradwell was "the only instance in which I have been able to get an authority to put the Housing of the Working Classes Act (1855) in force". Lord Salisbury had earlier reported that "Thousands of families have only a single room to dwell in, where they sleep and eat, multiply, and die... It is difficult to exaggerate the misery which such conditions of life must cause, or the impulse they must give to vice."

In Bradwell Dr Thresh had found many houses in very poor condition. Mostly lath and plaster with a thatched roof, and a few wooden ones were 'actually tumbling

down' and 'a good many of them in a disgraceful condition.' He also reported that there were a number of families with a large number of children who they had to live in cottages, some of them with one bedroom.'

The problem of the workers' cottages had its root in the fact that they were built on copyhold land, and low wages prevented the payment of realistic rents leaving landlords with little opportunity for improving the existing properties, and 'Nobody can afford to build a decent cottage to let at 1/6d a week.' A few farmers had built cottages for their workers for which the latter were only charged 1 shilling a week - in other words, the farmer was giving the worker an extra 3 shillings a week on his wages.

Further in his evidence, Dr Thresh related that at Bradwell six cottages had already been built but there were originally going to be twelve. However, one of the landowners had built six houses in East End Road himself.



The cottages in East End Road built by Clem Parker, barge fleet owner and farmer, were for six of his workers.

Then six coastguard Cottages were

constructed at the Waterside, so that Maldon authorities decided that they would only finance six. It was into one of the first six that the Pages would have moved after their completion in 1905.



The photograph shows the new Coastguard Cottages on their original site at the Waterside. During the Second World War they were demolished because they were in direct line of aircraft taking off and landing at the wartime Bradwell Bay airfield. The cottages, less the officer's house, were re-erected near Manyweathers Cottages.

(Ed: We are most grateful to Kevin Bruce and Frank Jeffery of Linton for sharing their research on this subject with us.)

Everyone Enjoyed their Messy Easter!

On Good Friday over 30 children came to St Lawrence Church for an Easter-themed “Messy Church”.

“What is Messy Church?” I hear you say.

Well, firstly Reverend Steven described the Easter story. The children joined in and sang. They then had fun at different craft activities such as flower arranging, painting, decorating cakes, making Easter bunny cars and of course an Easter Egg hunt.



This was followed by a sandwich lunch and the children left laden with their works of art and chocolate eggs.



DEDICATION SERVICE FOR TELESCOPE AND PIANO

On Saturday 5th May, a service was held at St Lawrence Church for the dedication



of the Telescope and Piano. The service was conducted by the Very Revd Nicholas Henshall, Dean of Chelmsford Cathedral, and Revd Steven Poss. It was a wonderful, sunny day and we were joined by the Chairman of Essex County Council Cllr John Aldridge and his wife Chris, John Whittingdale our MP, Maldon District Councillors Penny Channer and Michael Helm, Cllr Carole Taylor chairman of St

Lawrence Parish Council and the St Lawrence Singers. Following the service refreshments were served in the Anne Harper room.

A grant of £5,500 had been received from the Essex County Council Community Initiative Fund for the telescope, and information boards. The grant was made as part of an initiative to encourage Tourism in the local area and to enhance the relationship between the Church and the local Community. Please come and use these new facilities as there is no charge and they can be used by all ages.



Bradwell Flower Show

Bradwell Flower Show is on Saturday the 4th August. Pick up a Schedule from local shops or the Doctors surgery.

It is now time to plan and think what you could enter into the show. Maybe your prize vegetable; flowers for cutting, or maybe some pot plants.



Gardening in June

Flowers

- Still time to plant out bedding plants into the garden.
- Apply fertilizer to growing bedding plants.
- If you have any spare bedding plants, plant them in containers or window boxes for extra displays. Mixed colour lobelia is lovely planted in pots or containers.
- Black-Eyed Susans and Morning Glory are also lovely planted in containers. You will need long canes or sticks to form a pyramid for them to climb up.
- Plant out young Chrysanthemum plants.
- Dead foliage from spring bulbs can finally be removed.

Fruit and Veg

- Plant Runner bean plants in the garden, and seeds for a later crop.
- Plant marrow, pumpkin and courgette plants in the garden.
- Protect carrots from carrot fly with fleece or fine mesh.
- Start digging new potatoes, taking care not to damage them.
- Sow more Radish and salad vegetables.
- Support raspberry canes, adding netting as fruit ripens.
- Put straw around Strawberry plants, cover with nets, and pick fruit as it ripens.

Greenhouse

- Plant Tomato, Pepper, Chilies and Cucumbers in the greenhouse.
- Keep the greenhouse well ventilated during the day and close windows at night to maintain an even temperature for the tomato plants.
- Tap tomato plants when flowering to assist pollination.
- Keep some potted Geraniums and other plants in the greenhouse to provide colour for the summer.
- Shade greenhouse as the sun gets hotter.
- Apply a high potash liquid tomato feed to tomatoes, peppers, chillies and cucumbers as fruit appear.

Garden Maintenance

- Water and feed hanging baskets and tubs regularly.
- If the weather gets very dry raise your mower cut to reduce stress on grass.
- Now start hedge cutting.
- Keep water butts clean.
- Keep an eye out for Lily beetle and larvae and remove if you find any on or under the leaves.
- Inspect roses for pests and black spot and treat accordingly.
- Keep bird baths topped up with water.

Children's Gardening

- Radish, carrots, potatoes, a selection of 5 vegetable and a large vegetable are all classes that children can enter in the Flower Show.
- Encourage children to pick and eat crops they have grown.

Bradwell-on-Sea W. I.

Bradwell-on-Sea W.I welcomed Hazel Ridgwell, a County trustee and long standing friend of the Institute, to the annual meeting in May.

After reviewing activities over the past year, two new members were welcomed to the committee, and Chris Orrin was re-elected president for the coming year. Mrs. Ridgwell then judged the entries in the Bradwell bake-off. Debs Cordery won with her tea bread, Julie Smith with her biscuits and Kay Davies with her mini jam tarts. After refreshments, when members were able to sample entries in the bake-off, there was discussion on the resolution about mental health matters, which was passed unanimously. Janet Galloway and Linda Sibley won the competition for a decorative cushion and Linda also won the raffle.

THE BEST KEPT SECRET

During a recent visit to Eastlands Caravan Site in East End Road, I was asked if I had ever visited their museum. I hadn't so I was given the opportunity for a quick look. It had to be quick because a visiting History Group was there and I was not about to interrupt it.

The Museum came as a surprise to me as I had never known of its existence. I mentioned it to another Bradwell resident who had never heard of it either so I thought many of you are probably as unaware as I was, and it seemed so interesting I decided to share it with you.

James Harvard is the creator of the museum and he has been collecting memorabilia from the RAF, Army, and Royal Navy for over 20 years. In his Military, Science and Natural History Museum he has the largest collection of Military uniforms in the whole of Essex. It was impressive gazing at one side of the room where apparently standing at attention, were rows of uniformed 'figures' dating from the 1800's. There is also a magnificent gun collection from many countries, including munitions, and much more.

There are two brand new exhibits about which James and his partner Janice are very

excited.. One is their Lynx Helicopter Mark 8, and the other, their special Jaguar Jet Fighter which looks fantastic.

The Museum is open on weekends only from 10am to 4pm. Weekday visits, for parties for example, are available by appointment only. Admission is free but donations are welcome in the various boxes which are available.

. More information can be found on their

website, bradwellbaymilitarymuseum.co.uk



The children would love it, and it is possible to get refreshments there too.

JUNE CHURCH SERVICES

Time	Service	Place	Readings
3rd	Trinity 1		
8.00	BCP Holy Communion	St James Dengie	1 Samuel 3; 1-10 2 Corinthians 4; 5-12 Mark 2; 23-3;6
9.00	Parish Communion	St Lawrence Church	
10.00	All Age Worship	St Lawrence Centre	
10.00	Family Service	St Nicholas Tillingham	
10.30	Parish Communion	St Thomas Bradwell	
1.30	Baptism	St Lawrence Centre	TBA
3.30	Care Home Service	Down Hall	TBA
10th	Trinity 2		
10.00	Family Communion	St Lawrence Centre	1 Samuel 8;4-11 & 16-20 2 Cor 4.13-5.1 Mk 3.20-35
10.00	Holy Communion	St Nicholas Tillingham	
10.30	All Age Worship	St Thomas Bradwell	
3.00	Evening Service	St James Dengie	TBA
6 .00	Evening Service	St Lawrence Church	
17th	Trinity 3		
8.00	BCP Holy Communion	St James Dengie	1 Samuel 15; 34-16;13 2 Corinthians 5; 6-10 & 14-17 Mark 4; 26-34
9.00	Parish Communion	St Lawrence Church	
10.00	All Age Worship	St Lawrence Centre	
10.00	Family Service	St Nicholas Tillingham	
10.30	Parish Communion	St Thomas Bradwell	
24th	Trinity 4 John the Baptist		
8.00	Holy Communion	St Thomas Bradwell	Isa.40.1-11 Galatians 3:23-29 Luke 1:57-66, 80
9.00	Parish Communion	St Lawrence Church	
10.00	All Age Worship	St Lawrence Centre	
10.00	Family Communion	St Nicholas Tillingham	
10.30	Family Service	St Thomas Bradwell	
3.003	Evening Service	St James Dengie	TBA
1st July	Trinity 5		
8.00	BCP Holy Communion	St James Dengie	2 Samuel 1; 1, 17-27 2 Corinthians 8; 7-end Mark 5: 21-end
9.00	Parish Communion	St Lawrence Church	

10.00	All Age Worship	St Lawrence Centre	
10.00	Family Service	St Nicholas Tillingham	
10.30 3.30	Parish Communion Down Hall	St Thomas Bradwell Bradwell Care Home Service	
6.30	Joint Benefice Barbeque and Evening Service	St Peters Chapel	TBA

ST THOMAS CHURCH JUNE ROTA

Date	Time	1st Reading	2 nd Reading	Sidesmen	Intercessor	Coffee Rota
June 3rd	10.30	J Ruston	C Orrin	J Bateman	T Reed	Wyn & Sheila
		Gospel: Rev S Poss				
10th	10.30	C Orrin	J Hill	Z Lawrence	D Thorpe	Z Lawrence
17th	10.30	T Reed	Z Lawrence	C Orrin	C Orrin	J Rushton
		J Bateman				
24th	8.00	R Scurrall	Rev S Poss	J Ruston		
	10.30	M French	Rev B Main	M Neall	L Main	C Orrin
July 1st	10.30	T Teed	J Ruston	D Thorpe	T Reed	M French
		Gospel: Rev S Poss				
	18.30	St Lawrence	Tillingham	R Scurrall	Bradwell	Team Event
		Dengie				

ST LAWRENCE CHURCH JUNE ROTA

Date	1 st Lesson	2 nd Lesson	Intercessor	Sidesperson
3 June	Alan Gardner	Shirley Lea	Michael Pudney	Lois Gardner
10 June	Evensong TBA			
17 June	Michael Pudney	Eunice Siggins	Shirley Lea	Eunice Siggins
24 June	Anne Hendry	Bronwen Cook	Michael Pudney	Jane Pudney
1 July	Bronwen Cook	Alan Gardner	Revd S Poss	Lois Gardner