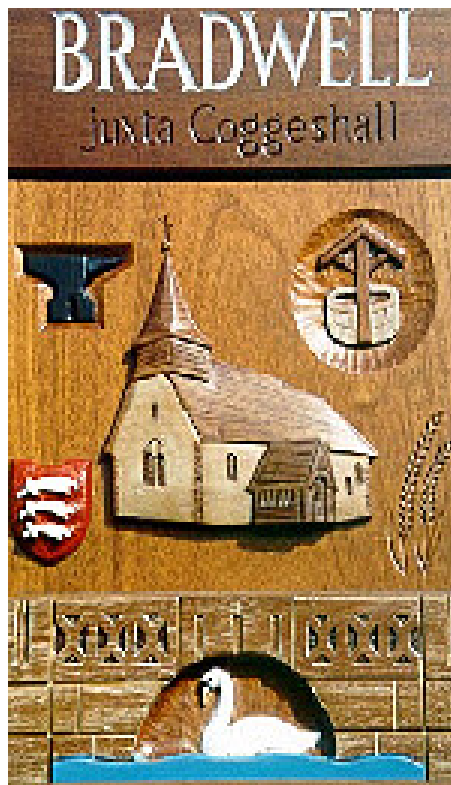


Bradwell with Pattiswick Parish Council

Parish Plan

2016



*Bradwell with Pattiswick Parish Council
Mill Cottage
Church Road
Bradwell
CM77 8EP*

<http://www.essexinfo.net/bradwell/>

Prepared by Tony Dunn on behalf of the Parish Council

May 2016

Adopted at the Parish Council Meeting of 13th June 2013, Minute number 16/145a

Contents

| | Page |
|---|------|
| 1 Introduction | 4 |
| 2 Background to the Parish | 5 |
| 3 Parish Plan Questionnaire | 7 |
| 4 Results | |
| a. Vision | 8 |
| Housing | |
| Roads | |
| Integrated Waste Management Facility | |
| Bradwell Pit | |
| Other | |
| b. Housing | 10 |
| c. Healthcare | 11 |
| GPs | |
| Braintree | |
| Coggeshall | |
| Kelvedon | |
| Silver End | |
| Hospitals | |
| Braintree | |
| Colchester | |
| Chelmsford | |
| d. Education | 13 |
| e. Transport | 14 |
| School transport | |
| Bus | |
| Rail | |
| f. Community | 15 |
| g. Recreation and Leisure | 15 |
| h. Village Hall | 15 |
| i. Pavements and Lighting | 16 |
| A120 | |
| Bradwell Village | |
| j. Law and Order | 17 |
| k. Communications | 17 |
| l. Employment | 18 |
| m. Young peoples' opinion | 19 |
| 5 Parish Action Plan | 20 |
| a. Parish Council | |
| Housing / Employment / Neighbourhood Plan | |
| Roads | |
| Community | |
| Recreation and Leisure | |
| Playing Field | |

| | | |
|----|--|----|
| | Village Hall | |
| | Pavements and Lighting (Bradwell Village) | |
| | Footpaths | |
| | Young people | |
| | Environment | |
| | Litter (Pattiswick) | |
| | Dog mess (Bradwell) | |
| | Orchard | |
| b. | District Council | 22 |
| | Neighbourhood Plan | |
| c. | County Council | 22 |
| | Roads | |
| | Integrated Waste Management Facility | |
| | Bradwell Pit | |
| | Education | |
| | School Transport | |
| d. | Highways England | 22 |
| | A120 | |
| | A120 Pavements and Lighting | |
| e. | Other statutory bodies | 22 |
| | Healthcare | |
| | Bus services | |
| | Rail services | |
| | Communications | |
| | Law and Order | |
| | Annex 1 – Demographics | 24 |
| | Annex 2 – Parish Plan responsibilities and Neighbourhood Plan Topic Groups | |

1 Introduction

Parish and Neighbourhood Plans empower local people to take ownership of their own futures by becoming involved in the planning of the future of their Parish / Neighbourhood / Community.

The Parish Plan is a document that tackles important issues that will influence our neighbourhood in the future. This could be anything from ensuring building projects fit in with local character, to supporting alternatives to private car use, to improving the state of the playing fields.

The plan identifies key facilities and services, sets out the problems that need to be tackled and shows how distinctive character and features can be conserved. It also includes an action plan for the area.

Parish Plans can be used to make sure local concerns and characteristics are taken into account before any planning decisions are made.

This Parish Plan comprises a number of sections; each section deals with a group of related issues, which affect the Parish and tend to relate to one external body. The Parish Council aims to discuss each section with the relevant authority over the coming months.

This Parish Plan also identifies areas / topics where more work is required in order to produce a Neighbourhood Plan 2016-2033 – these areas will be taken forward and will involve a wide group of people through Topic Groups.

It is anticipated that the people working on the Neighbourhood Plan 2016-2033 will include Parish Councillors, a District or County Councillor, volunteer residents and members of the business community.

2 Background

Bradwell Juxta Coggeshall is a village and civil parish in Essex, England. It is located on the River Blackwater, approximately 5 km (3 miles) east of Braintree and is 19 km (12 miles) north-northeast from the county town of Chelmsford. The name derives from Old English meaning broad well. To this day there is a spring a few metres north of the modern manor house of Bradwell Hall near to Holy Trinity Church. In the Middle Ages, this spring fed an overshot mill. Remains of the last mill on the site can still be seen in the overgrown surroundings of the millpool.

Bradwell Juxta Coggeshall, to give the full parish name, is a dispersed village. There is no good evidence that the village was ever nucleated around the church. The modern village, on the A120 between Braintree and Coggeshall, is the former hamlet of Blackwater (also once known as Blackwater Green) by which name it was known into the twentieth century.

The parish includes the adjacent hamlet of Pattiswick to the North-East and a small collection of houses to the South-East at Perry Green.

The A120 is a busy trunk road, which runs along the route of the Roman Road - Stane Street – from Colchester to Ermine Street at Braughing, Hertfordshire. The A120 divides Bradwell and separates Bradwell Village from Pattiswick.

According to the 2001 Census, Bradwell had a population of 512. There are just over 200 dwellings. There are 425 people on the electoral roll (2015/16). Bradwell has a mixed population both in age and demographics.

The key services in the parish¹ are the Village Hall, a garage with a shop and cash point and two restaurants – the *Spicy Swan* in Bradwell Village and the *Compasses* in Pattiswick. There is a public house – the *Dolphin* - on the A120 on the edge of the Parish boundary with Stisted.

The parish does have a playing field with a play area (which needs upgrading) and a football pitch, allotments, orchard of local heritage fruit trees, small business units and a Parish magazine (jointly with neighbouring village, Stisted).

There is no school, no Post Office, no Doctors Surgery, no Dentist and no Police Station or mobile equivalent. There is no pre-school or nursery, after-school club or youth club. There is no overnight accommodation such as hotels, self-catering accommodation or B&B.

The nearest Accident and Emergency Hospital is in Chelmsford (13 miles; 23 minutes) or Colchester (15 miles; 30 minutes).

¹ Braintree District Council Rural Services Survey (2008 and 2011 update)

The Congregational Church is closed and has been converted to residential accommodation, as has St Mary's Church in Pattiswick. The Parish Church still holds weekly Sunday services.

Although the Parish Church is of historic interest (dating back to Norman times and beyond) and the Essex Way passes through the parish, there are no other tourist or visitor attractions.

There is an hourly bus service on the A120, which goes to Braintree (4 miles; 10 minutes) or Coggeshall (4 miles; 10 minutes) and Colchester (13 miles 30 minutes).

The Village Hall is located on the edge of the modern village and is within walking distance for all residents of the Village. Parking for up to six cars is available to the front of the Hall. There is no alternative accommodation for meetings in the Village and there is no alternative emergency accommodation.

The monthly Bradwell Coffee and Cake mornings in the Village Hall for all ages is well supported, as are the monthly events organised by the Village Hall Management Committee.

More detailed demographic information about the Parish is included in Annex 1.

3 Parish Plan Questionnaire

Two questionnaires were prepared one for adults (8 pages) and one for young people under the age of 18 years (3 pages).

Parish Councillors delivered by hand questionnaires to every household in the parish – 204 households. 89 (44%) of households returned questionnaires.

Each household was provided with sufficient adult and young persons questionnaires for all of the occupants and a stamped addressed envelope in which to return the completed questionnaires.

140 adult and 24 young persons questionnaires were completed and returned, which represents 33% of the adult questionnaires and 41% of the young peoples' questionnaires that were given out. In addition, 9 questionnaires were returned incomplete; the responses on these questionnaires have been included in the results wherever possible.

The overall response is broadly in line with the demographics of the parish. There is slight under-representation of the under 40s and over-representation of the 51-70 age group.

| | under 21 | 21-30 | 31-40 | 41-50 | 51-60 | 61-70 | 71-80 | over 80 | TOTAL |
|--------------|----------|-------|-------|-------|-------|-------|-------|---------|-------|
| Bradwell F | 9 | 5 | 6 | 8 | 19 | 15 | 3 | 1 | 57 |
| Bradwell M | 12 | 3 | 4 | 8 | 12 | 20 | 9 | 3 | 59 |
| Bradwell ? | | | | | | 1 | | | 1 |
| Pattiswick F | | | | 2 | 2 | 3 | 1 | | 8 |
| Pattiswick M | 1 | | | 1 | | 2 | 1 | | 4 |
| Rural F | 2 | | 1 | 1 | | 2 | 1 | 1 | 6 |
| Rural M | | | | | 1 | 2 | 1 | 1 | 5 |
| TOTAL | 24 | 8 | 11 | 20 | 34 | 45 | 16 | 6 | 140 |
| TOTAL M | 13 | 3 | 4 | 9 | 13 | 24 | 11 | 4 | 68 |
| TOTAL F | 11 | 5 | 7 | 11 | 21 | 20 | 5 | 2 | 71 |
| Response | 15% | 5% | 7% | 12% | 21% | 27% | 10% | 4% | |
| Population | 19.9 | 9.2 | 10.6 | 14.2 | 17.8 | 15.9 | 8.4 | 4 | 100 |

There is no base data for male:female ratio for the parish. The male:female ratio of responses was 100:101.

Overall, the response is demographically representative of the parish.

Results

a Vision

The Questionnaire asked people to state up to the three things they would like to change and up to the three things they would not want to change. Given there are many aspects of the Parish which people could want to change or keep the same, one does not expect high percentages for any one item unless feelings are very strong. The key issues were Housing and Roads followed by the Integrated Waste Management Facility and Bradwell Pit.

Housing

The overwhelming majority (66%) said they did not want any housing development as this would spoil the character of this quiet, small village (33%), to which they had come to live. There is no infrastructure to support any development (23%) and there is too much traffic congestion already both on the A120 and at the junction of the A120 with The Street (24%). The responses clearly indicated that the sleepy nature of the village, the countryside, farmland and the public footpaths are valued and appreciated.

There was recognition that some limited, small-scale housing is appropriate (see b Housing)

Any proposal for new businesses, which would attract trucks and lorries should be resisted. Indeed, any activity, which increases traffic on the existing A120 should be resisted until a new route has been completed.

Roads

Improvements to roads were mentioned 128 times in a total of 140 responses from adults. Speeding vehicles were mentioned as a safety hazard by 13 out of 24 young people.

25% volunteered the A120 by-pass as their top priority change for the Parish. Residents stated that the dualling of the (existing route of the) A120 was not an acceptable solution, a by-pass was required and care should be taken when selecting the route such that it did not divide existing communities.

While the A120 by-pass is being debated and hopefully constructed, there are a number of improvements, which the residents would like to see now (in priority order):

30mph speed limit and speed cameras on the A120 through Bradwell
Improved access / traffic lights at the junction of the Street and the A120
Resurfacing of the existing A120 along its length through the Parish
Improved pavement alongside the A120
Switch off (or dim) the street lights outside housing after midnight
Restoration of the “Bradwell Village” signs on the A120
An off-road cycle lane along the A120

There is clearly an issue with parking in The Street and Forge Crescent with residents asking for improved off-road parking facilities in this area. Concern was also expressed about the state of the pavements, the safety of pedestrians and motorists travelling at unsafe speeds through the Village.

Restrictions on HGV movements in The Street, alongside speed bumps, a 20mph speed limit and speed checks were all suggested as ways to improve road safety.

Frustration was expressed (by 18%) at the **Integrated Waste Management Facility** for which planning permission was granted five years ago. Residents were no longer clear about what was now proposed compared to the plans, which had been approved. There was concern that the public were being kept in the dark by Essex County Council who had approved changes to the original permission at an emergency meeting. Applications for extraction from and discharge of water to the River Blackwater had been made which were contrary to the original planning permission. There were fears about air pollution, river pollution, increased traffic and the associated noise as well as the adverse impact on house prices.

Expansion of **Bradwell Pit** beyond that already authorised should be resisted (9%). Concern was expressed that the restoration plans would not be completed as agreed, especially the return of the Haul Road to agricultural land when the pit closes.

Over 12% of residents would welcome a **Village Shop**. There were also requests for **Neighbourhood Watch**, a Village Pub, a GP surgery and improved Internet Access (but see Communications).

There is enthusiasm for more activities, more facilities for the young people, fitness classes in the Village Hall and improvements to the playing field including additional apparatus (see Recreation and Leisure).

There were requests for improvements to Holy Trinity Church – toilets and the churchyard and some criticism of the church authorities for “interfering” with the Village Hall.

There were requests from Pattiswick and rural residents for improved street cleaning (15%) and lower speed limits (25%) on the rural roads.

b Housing

The responses from Pattiswick and the rural parts of the Parish are not significantly different from the responses of those living in the Village. The results below represent the consolidated view.

There was general agreement (74%) that there is a broad mix of housing (only 11% of respondents disagreed).

60% of respondents stated that no new housing development was required. Of the 30% who said some development was required, there was a very high correlation (>95%) with those saying that there was insufficient property for young people to rent or buy.

There was overwhelming (90%) support for new housing to be owner occupied. If any homes are to be provided, starter homes and family homes were seen as the homes, which should be provided. Semi-detached houses were marginally favoured over detached houses. There should be no flats or apartments and terraced housing was not popular.

There was also recognition that some provision may be required for those wishing to downsize with retirement homes for over 55s (29%) being preferred over warden attended accommodation (19%) or a Care home (8%).

Only 7% of respondents thought that overhead cables did not spoil the village with 62% saying that they definitely did spoil the village / landscape.

24% of respondents thought that the Parish was protected from unsuitable development; 46% disagreed.

Allotments

No comments were received about allotments, so our working assumption will be that adequate provision was made when the allotments were extended six years ago.

c Healthcare

GPs

GP services are provided by at least three surgeries in Braintree (51% of respondents) and surgeries in Coggeshall (39%), Kelvedon (4%) and Silver End (5%). Opinions differed widely according to the specific doctors' practice, even so there was a general consensus that more doctors and more surgeries are required.

Braintree

48% of respondents said that getting to the surgery was easy; 32% of respondents said that getting to the surgery was difficult and a number of respondents noted that it was only easy for them as they had a car. Even so there was a plea for better parking at the Mount Chambers surgery.

The responses on getting an appointment and the adequacy of GP services were split, probably based on experiences at specific surgeries. 23% found getting an appointment easy and thought GP services are adequate, while 69% found getting an appointment difficult and 45% found it very difficult. 61% thought that GP services were inadequate.

Making appointments was a key issue (mentioned by 25%) with requests for more appointments, particularly pre-booked appointments, to be available and easier ways of making appointments.

Other suggestions included: more modern / larger premises, polite receptionists, Saturday surgeries and some more local provision for the elderly eg home visits, use of the Village Hall for surgery.

Coggeshall

78% found getting to the surgery easy, 65% found getting an appointment easy and 72% considered GP services to be adequate.

Overall satisfaction was expressed with what appears to be an excellent surgery, however, concern was expressed that expansion of Coggeshall or the transfer of patients from other (Braintree) surgeries could have an adverse impact.

There is always room for improvement and suggestions included a better appointment system, more doctors and more doctors in the surgery.

Kelvedon

This was a small sample (6 respondents), nevertheless, they all said it was easy to get to the surgery, 66% found getting an appointment easy but opinion was split on the

adequacy of GP services with only 33% finding them adequate and 66% finding them inadequate.

Again the ability to pre-book appointments (a few days in advance) and the provision of home visits were raised as opportunities for improvement.

Silver End

This was a small sample (7 respondents), it was easy to get to the surgery for most of the respondents, getting an appointment was not easy for anyone and GP services were considered to be inadequate (86%).

All of the respondents stated that more doctors were required and ideally one should be able to get to see one's own doctor.

Hospitals

Hospital services are used in Braintree (31%), Colchester (9%) and Chelmsford (23%). 37% do not use the hospital services.

58% of respondents agreed that emergency assistance is available when required. Only 13% considered that it was not available when required. There was a high correlation between those who were neutral on the subject and those who did not use hospital services, which suggests that those who have needed emergency medical assistance did receive it promptly.

Braintree (47 respondents)

55% found getting to Braintree Hospital easy; 23% found it difficult. 23% had difficulty getting an appointment, 44% found it easy. 60% agreed that outpatient services were adequate; 15% considered outpatient services inadequate.

Colchester (13 respondents)

6 (46%) of respondents found getting to the hospital easy; 2 (15%) respondents had difficulty getting to the hospital. Only one respondent (8%) had difficulty getting an appointment or thought outpatient services were inadequate. 46% found getting an appointment easy and 54% thought the outpatient services were adequate.

Chelmsford (35 respondents)

49% of respondents found it easy to get to the hospital while 17% had difficulty. Opinion was split over the ease of getting an appointment with 29% finding it easy and 43% finding it difficult. 40% found the outpatient service to be adequate and 29% inadequate.

There were many suggestions for improved healthcare but no one suggestion was mentioned by more than 5% of the respondents. There were some general themes: expand the hospital services in both Braintree and Colchester, provide A&E capability at Braintree, keep the Community Hospital in Braintree, provide out of hours capability at Braintree Hospital and more staff generally.

d Education

Only those with experience of the education system were asked to respond to this part of the questionnaire and some only responded to those questions for which they had experience. Percentages are based on the number of people who responded to that question.

Only 18% of respondents did not think there was sufficient access to quality education for young people; 56% did think there was.

47% of respondents think the education provided by Honywood School is of high quality; 14% disagree. Concern was expressed that Bradwell was no longer in the catchment area for Honywood School or Stisted School. The decision to withdraw free school transport from Bradwell to Honywood for existing students was deplored by some and it was suggested this decision should be reversed or at least the cost of public transport for students should be reduced.

15% of respondents thought the education provided by Alec Hunter Humanities College is of high quality; 21% disagreed.

23% of respondents thought there was adequate provision for nursery children; 19% disagreed. It was pointed out that transport was required to get to the available nursery provision, as there is no nursery provision in the parish. More available nursery places and a local nursery provision would be welcomed.

20% of respondents thought there was adequate provision for adult education but 21% disagreed. There was a call for more local adult education opportunities / evening classes.

e Transport

48% of respondents were satisfied with public transport services; 22% were dissatisfied.

School transport

15% said that transport to schools is satisfactory and 15% said that transport to schools is not satisfactory.

10% stated that school transport should be free to schools where Bradwell is in the catchment area ie Honeywood. [Note: Only 20% of adults would have children at school.]

Public bus service

62% of respondents never use public bus transport from Bradwell. There is no public bus transport from / through Pattiswick.

There were requests for public transport from the bus station to the Community Hospital, for a more reliable bus service, for a more frequent bus service and for a service which includes Pattiswick.

Rail

5% used rail transport daily; 64% used rail transport occasionally (less than weekly) and 31% never used rail transport. For those over 80 years old, 70% never use the trains.

Half of those using rail transport go via Witham station, a third use Kelvedon, with Braintree as the next most popular station.

Respondents suggested rail transport can be improved by reducing rail fares and by providing a more reliable service.

f Community

64% of respondents agreed that Bradwell with Pattiswick has a good sense of community only 8% disagreed and of these 70% lived in Pattiswick.

80% agreed that Bradwell with Pattiswick has adequate recycling facilities, only 9% disagreed.

55% stated that there should be a Community Magazine, 9% disagreed. 17 people offered to help with the preparation and production of a Community Magazine.

56% said they would be prepared to help in an emergency.

g Recreation and Leisure

53% of respondents do not consider Bradwell with Pattiswick to be well supplied with leisure facilities; only 11% consider leisure facilities to be adequate.

Bradwell does have sufficient open spaces according to 76% of respondents; only 11% disagreed.

67% considered there were adequate well-signed public footpaths; 16% disagreed. 71% of young people report taking regular walks with the family and 46% of young people report walking along public footpaths. There were requests for footpaths to be clearer and better maintained.

23% said their recreational needs were adequately met, while 19% said they were not.

40% of adults considered young people's recreational needs were not adequately met. Only 14% considered that they were.

The main additional recreational / leisure facilities which were requested was more facilities in the park (ie skate ramp, gym/play facilities) for all ages.

Adults would like to see a Youth Club and organised regular events for teenagers

h Village Hall

The Village Hall proved to be popular with 20% attending at least monthly and a further 50% attending occasionally. 30% said they had never been to the Village Hall.

The Village Hall Management Committee organises regular social events the most popular were Quiz (18), Easter Egg Hunt (14), New Year Celebration (14), Race Night (13), Dances (Discos) (11), Social Nights (11), Casino Night (7). Numbers in brackets are number of times the event was mentioned by respondents.

Respondents made some suggestions for additional activities which would encourage them to attend: Keep Fit (8), Yoga (2), Pilates (1); adult dance classes (7).

6 respondents were content with more of the same.

7 respondents asked for better and earlier advertising of events.

i Pavements and Lighting

A120

32% of respondents considered the pavements on the A120 to be adequate, but 47% disagreed and 33% of these (47%) disagreed strongly. Uneven pavement surfaces and narrow pavements along the A120 were highlighted as safety issues requiring attention.

62% of respondents considered the street lighting on the A120 to be adequate, 16% disagreed. Of those who disagreed, the comments were that the lighting was very harsh and spread well beyond the A120 itself. There were a number of requests for the lighting outside houses along the A120 to be dimmed or switched off after midnight.

Bradwell Village

39% of respondents considered the pavements in Bradwell Village were adequate, but 38% disagreed.

49% of respondents considered the street lighting in Bradwell Village to be adequate, only 27% disagreed.

The main areas of concern were Tippets Wade, between Church Road and The Street and Church Road from Tippets Wade to the Village Hall – for both areas improved lighting and pavements were requested.

The other area of concern was the junction of Forge Crescent and The Street where the poor quality of the pavement and the overhanging hedge were highlighted.

j Law and Order

46% of respondents did not consider police presence to be sufficient. Only 11% considered the police presence to be sufficient.

22% said the police did not respond in a timely way; 18% said that they did.

82% said that Bradwell with Pattiswick is a safe place to raise a family, only 2% disagreed.

79% said there should be a Neighbourhood Watch in the Village; no one disagreed.

k Communications

85% of respondents use the Internet.

44% of respondents use Facebook

6% use Twitter

Less than 1% use Streetwise

85% of respondents have an e-mail address; 15% do not.

There is no significant age bias amongst those who do not have an e-mail address.

Of those who declared their Internet speed, 41% had a download speed below 2Mb/s, while 31% had speeds in excess of 32Mb/s.

32% of respondents consider Internet speeds are adequate; 58% of respondents consider Internet speeds to be inadequate and over half of them think the speeds are grossly inadequate.

Those respondents who have speeds below 2Mb/s are using land-lines. To achieve higher Internet speeds, respondents either use County Broadband (up to 28Mb/s) or mobile broadband or satellite services

51% never access the Parish Council web-site

34% rarely access the Parish Council web-site

I Employment

The base data for employment is:

| | |
|----------------------|------|
| Full-time employed | 36.6 |
| Part-time employed | 18.8 |
| Self employed | 17.5 |
| Retired | 14.4 |
| Looking after family | 5.0 |
| Disabled | 3.4 |
| Unemployed | 1.8 |

The response analysis for employment is:

| | |
|---------------|-----|
| Employed | 38% |
| Self-employed | 22% |
| Retired | 34% |
| Other | 6% |

The high percentage of retired people may be a reflection of the over-representation of 51-70 year olds in the overall sample.

52% of respondents considered there were plenty of employment opportunities; 15% disagreed.

23% thought more employment opportunities were required; 27% disagreed.

If employment opportunities are to be created they should be "seed bed" type start-up units and/or rural related employment to reflect Village Life and they should provide apprenticeships giving scope for youngsters to obtain experience.

16% of respondents work in London, the remainder work in Essex with 39% working within 5 miles of Bradwell.

m Young peoples' opinion

Eleven girls and thirteen boys responded to the questionnaire, ranging in age from 3 to 17 with the median age of 11. All were attending school / pre-school.

Out of school they tend to stay at home or spend time at friends' houses.

Having friends round (70%), walking with the family (70%), listening to music (70%), visiting friends (63%), watching TV (58%), going to the cinema (58%) are the most popular activities out of school. Dancing (91%) and reading (63%) are very popular with the girls. Playing computer games (77%), bike riding (54%) and sports activities (46%) are very popular with the boys.

79% of young people visit the Playing Fields at least once a month; of these over 84% play on the swings and the slide; the basketball/netball post is also popular (68%). 73% of the girls walk the dog, but none of the boys do this.

71% of the young people have to get a lift to visit friends, 38% walk, a quarter (25%) cycle and only the four oldest catch a bus.

54% of the boys belong to a club in Braintree, while 73% of the girls belong to a club in Coggeshall. 25% belong to a Scouting organisation. Other places where clubs are attended are Bradwell, Chelmsford, Kelvedon and Colchester.

58% of the young people are happy with the facilities available in Bradwell and 42% are not happy, nevertheless, almost all of the young people made suggestions for improvements..

Safety is an issue for over 70% of the young people with 54% of the young people expressing concern about speeding cars. Litter (29%) and dogs / dog mess (29%) were also cited as issues, interestingly 38% of the boys cited dogs/dog mess, yet none of the boys walk a dog, while only 9% of the girls saw this as an issue and 73% of the girls do walk a dog. 38% of the boys were also concerned about poor street lighting.

There were many suggestions for improvement, especially related to the playing field – more things to do on the playing field (11) including a zip-wire (4), better goals for football with nets (4), gym equipment (2), a bigger slide, new seats for the swings, an obstacle course, a basketball /netball court, rugby posts, a skateboard park. More bridle paths for horse riding, more trees and more clubs were also suggested. Similar suggestions were made in the adult responses.

Finally, there were pleas for more things to do / better equipment on the playing fields (>50%), to keep our village as it is, peaceful, with no more houses (17%), for a Village Shop (21%) and a request for a few more young people.

6 Parish Action Plan

The Parish Plan is developed by the Parish Council to ensure its activities are consistent with the wishes of the majority of the residents. The Neighbourhood Plan focuses on Planning Policy and is developed by a wider group of people supported by the Parish Council. The involvement of a wider group of people will be through the creation of Topic Groups. Topic Groups provide the required level of detail for areas of concern or where the questionnaire has not provided clear answers. Some actions will be delegated to a Neighbourhood Plan Topic Group and these are indicated below. Ownership of Parish Plan and Neighbourhood Plan Actions are summarised in Annex 2.

a. Parish Council

Housing / Employment

The residents' opinions about housing are clear; they will be used as input to Braintree District Council's evolving Local Plan; they will also be used in the Parish Neighbourhood Plan. A Topic Group – and/or a consultant - will be required to formally convert the residents' opinions into Planning Policy.

The opinions relating to employment are mixed. More base data is required and the opinions of those who work in the Parish but do not live in the Parish should be sought by the Planning Policy Topic Group.

Roads

The Parish Council will meet with Highways England (A120) and Essex County Council (Highways) to discuss the results of the questionnaire and ensure residents' opinions are taken into account as far as practically possible.

The Parish Council is represented on the A120 Community Forum (Braintree), which has been created by Essex County Council to ensure the views of local residents are taken into account when planning the route of the new A120 - Braintree to the A12.

Community

Over 12% of residents would welcome a Village Shop. There is already a Village Shop at the BP garage on the Coggeshall Road and this is accessible by foot via public footpaths, which are well maintained from most parts of Bradwell Village and Pattiswick. A more detailed analysis of the questionnaire responses will be undertaken to see whether the requirement for a Village Shop comes from a particular locality or age group. The Community Topic Group will determine how the Shop at the BP garage could better become the "Village Shop".

Feedback from Pattiswick residents was that they did not feel there was a good sense of community, in contrast to Bradwell Village residents. The Parish Council will try to proactively involve the residents of Pattiswick in community events eg footpath clearing and maintenance; litter pick.

While there was 55% support for a Community Magazine and offers of help to prepare the same, further analysis of the questionnaire results is required before a decision can be made on how this need can best be met.

Recreation and Leisure

Playing Field

There is enthusiasm for more activities, more facilities for people both young and not so young on the Playing Field. The Parish Council will lead on the provision of gym equipment and will use the feedback from the young people to provide additional / improved facilities for them. Additional / improved facilities on the Playing Field will largely be grant funded and the timescale for their provision will reflect the time taken to acquire grant funding (typically, 12-18 months).

Village Hall

The results of this part of the questionnaire have been passed to the Village Hall Management Committee.

Pavements and Lighting (Bradwell Village)

There was concern from the young people regarding speeding vehicles presenting a safety hazard. Improvements to the pavements and road safety at the junction of The Street and Forge Crescent, along The Street, between The Street and the Church Road and Church Road as far as the Village Hall will be the subject of a Road Safety Topic Group for the Neighbourhood Plan.

Footpaths

While there was general satisfaction with the provision of well-signed public footpaths and these footpaths are frequently used, it is important for the Parish Council to ensure these footpaths are kept clear and open.

Young people

There was general agreement that recreational facilities for young people should be improved. There will be a Topic Group for Young People, involving young people which will not only cover Neighbourhood Plan issues, but will include improvements to the Playing Field. The Parish Council acknowledges the call for clubs for young people and would look favourably on an application for a grant to set up a Club using the Village Hall under its power² to make grants to voluntary bodies without premises.

Environment

Litter (Pattiswick)

There were requests from Pattiswick and rural residents for improved street cleaning. The Parish Council will include Pattiswick and rural roads in proposed litter pick activity.

² Local Government Act 1972, s 137(1)

Dog mess (Bradwell)

Parish Councillors will keep a look out for dog owners who allow their dogs to foul footpaths and the playing field and will politely remind offenders of the consequences.

Orchard

The Parish Council will continue the restoration of the Village Orchard, which was commenced in 2008.

b. District Council

Neighbourhood Plan

The Neighbourhood Plan should be developed with the co-operation of and in line with the evolving Local Plan. The Neighbourhood Plan Steering Group should lead on this.

c. County Council

Roads

The Parish Council will meet with Essex County Council Highways to discuss the results of the questionnaire. The need for warning signage on the approach to Pattiswick had previously been identified and is being addressed.

Integrated Waste Management Facility

The Parish Council is represented on the IWMF liaison committee. The IWMF has planning permission, it will be important to ensure the Environment Permit (if approved) is robust and addresses the fears of residents.

Bradwell Pit

The Parish Council is represented on the Bradwell Pit liaison committee and will continue to represent the residents on matter relating to the Pit.

Education

The Parish Council will share the results of the questionnaire on matters relating to Education and School Transport with Essex County Council.

The Parish Council acknowledges the call for more local nursery places and would look favourably on an application for a grant to set up a play group or day nursery using the Village Hall under its power³ to make grants to voluntary bodies without premises.

d. Highways England

See "Roads" above

e. Other statutory bodies

Healthcare – NHS

The results of the questionnaire response will be fed back to the NHS.

The need for more doctors and better access to GP surgeries for some will be fed into the Neighbourhood Plan.

³ Local Government Act 1972, s 137(1)

Bus services

The Parish Council is consulted on changes to bus services in the District and will use the feed back from the questionnaire when next consulted.

Rail services

No action.

Communications

According to SuperFast Essex's web-site the entire parish can receive >2Mb/s, the feedback from residents shows this is clearly not the case. Further investigation is required.

Law and Order

Bradwell with Pattiswick is a safe place to raise a family, however, police presence should be improved. This will be fed back to the Police.

Neighbourhood Watch

The Parish Council will lead on setting up Neighbourhood Watch in the parish.

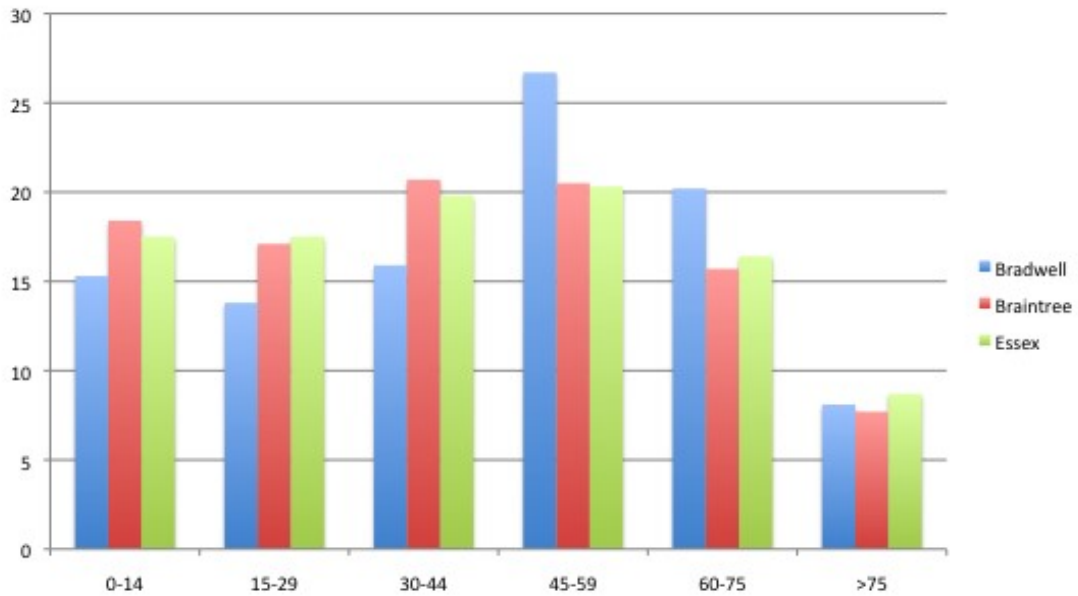
Speeding through the Village

The question of speed limits and road safety will form a Topic Group for the Neighbourhood Plan.

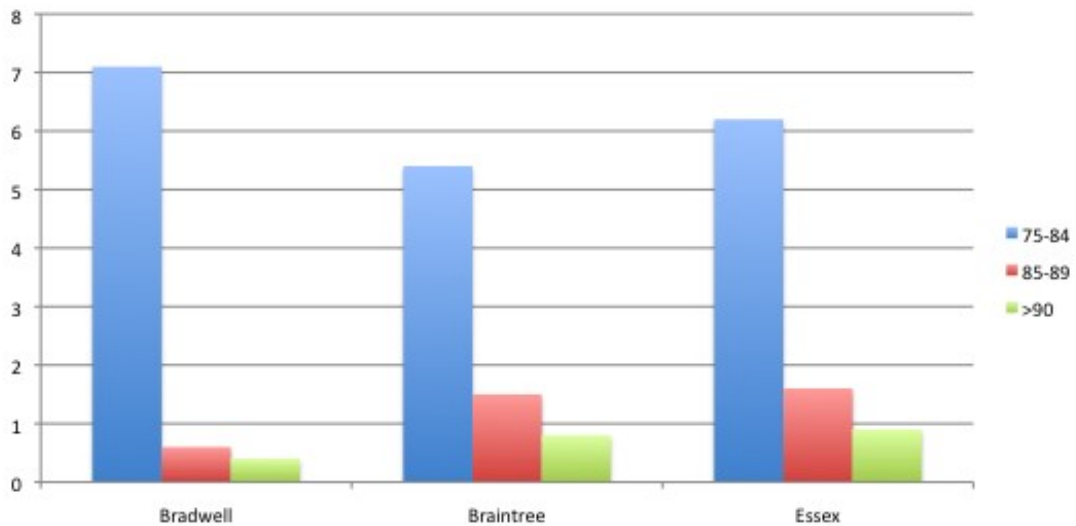
Annex 1 – Demographics

Population

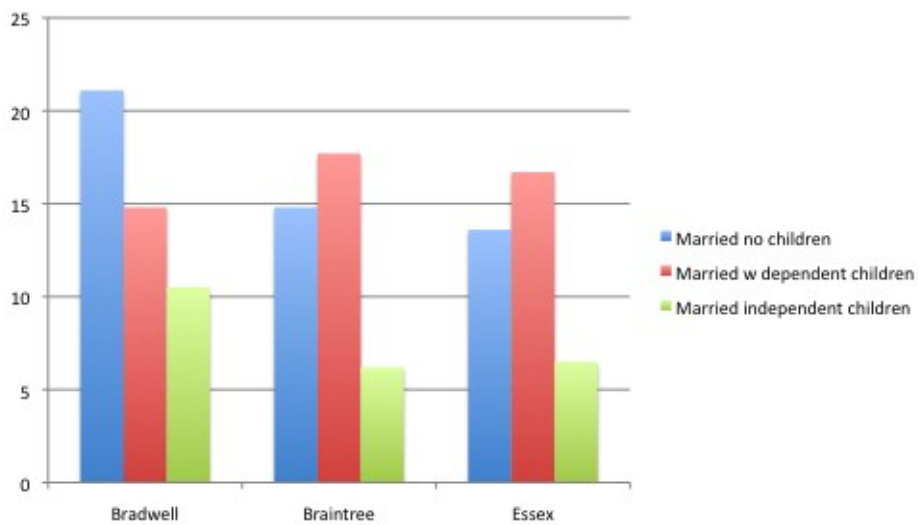
Bradwell with Pattiswick has fewer under 45s and more over 45s than either Braintree District or Essex County



Once the age of 85 is reached people appear to leave the parish



The overall higher age range in Bradwell with Pattiswick is reflected in the higher proportion of families with independent children (ie wage-earning children living at home) or no children (or children have left home).



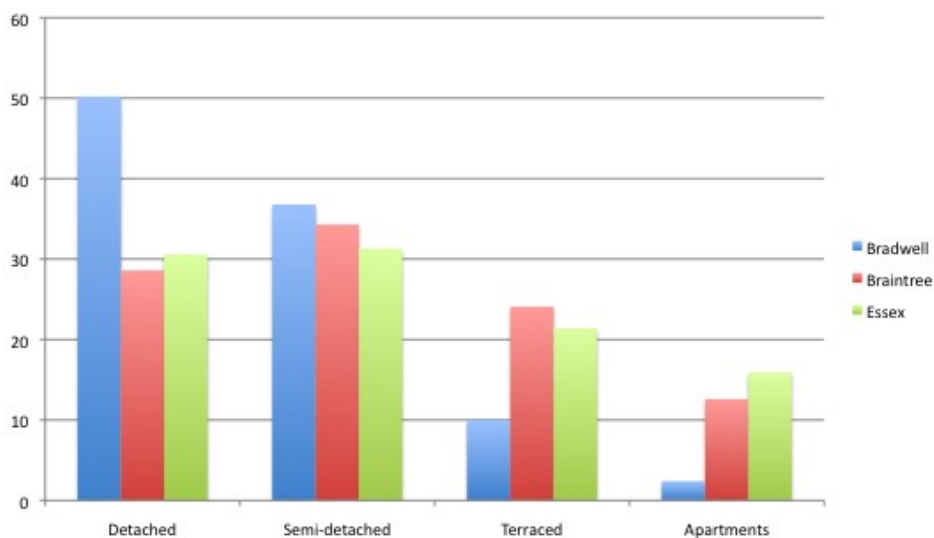
Co-habitation and Lone parents

Overall the number of cohabiting couples is higher (12%) than in Braintree District (10.8%) or Essex (9.8%). Again the absence of children is higher.

There are fewer lone parent families (5.7%) than in Braintree District (9.8%) or Essex (9.7%) and of these the lone parent families with dependent children is also lower (2.9%) compared to 6.6% in Braintree District or 6.3% Essex

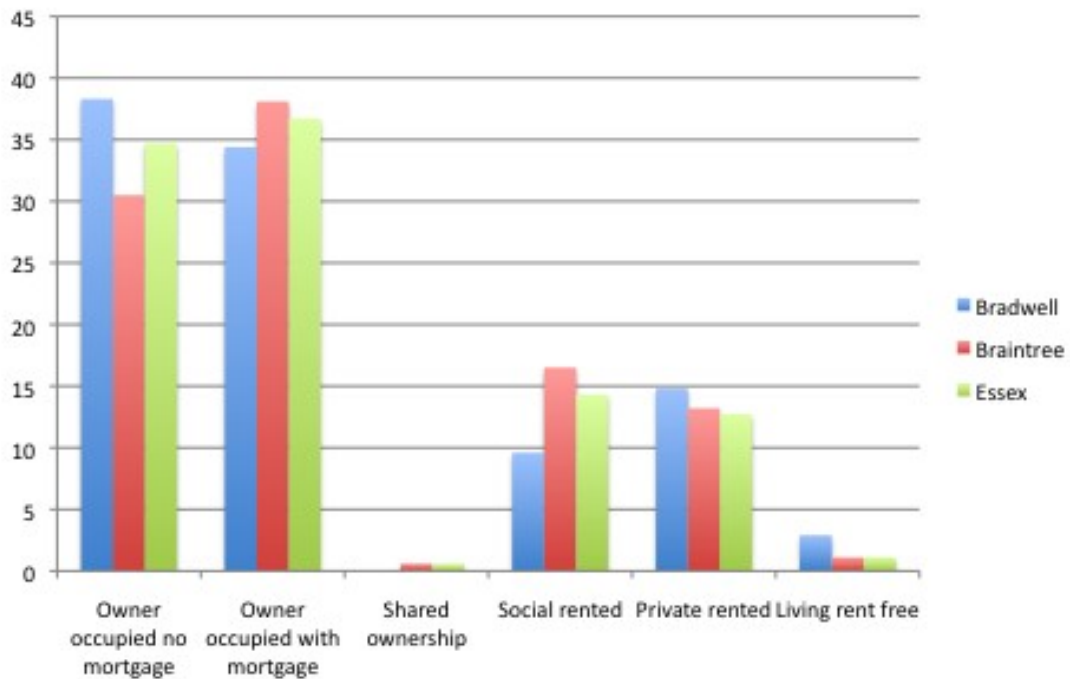
Accommodation

Bradwell with Pattiswick has more detached housing and fewer terraced houses and apartments / flats



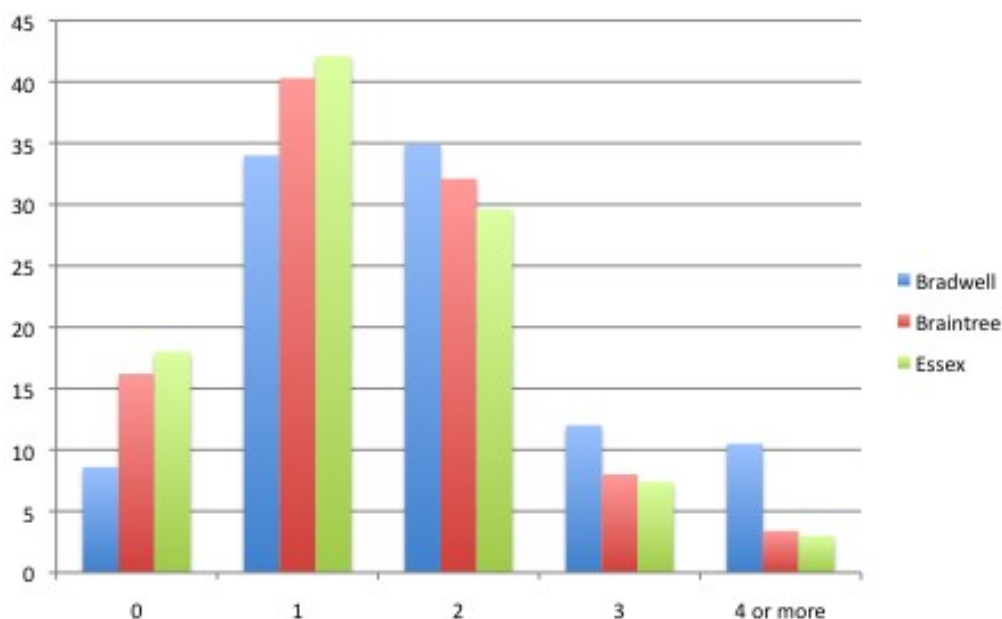
House ownership

Consistent with the rural population of England as a whole, over 70% of houses are owner occupied, with Bradwell having a higher proportion of outright ownership. There is significantly less social rented housing.



Car ownership

Consistent with the higher proportion of families with independent children, car ownership per household is also higher, with 10% of households having 4 or more cars.

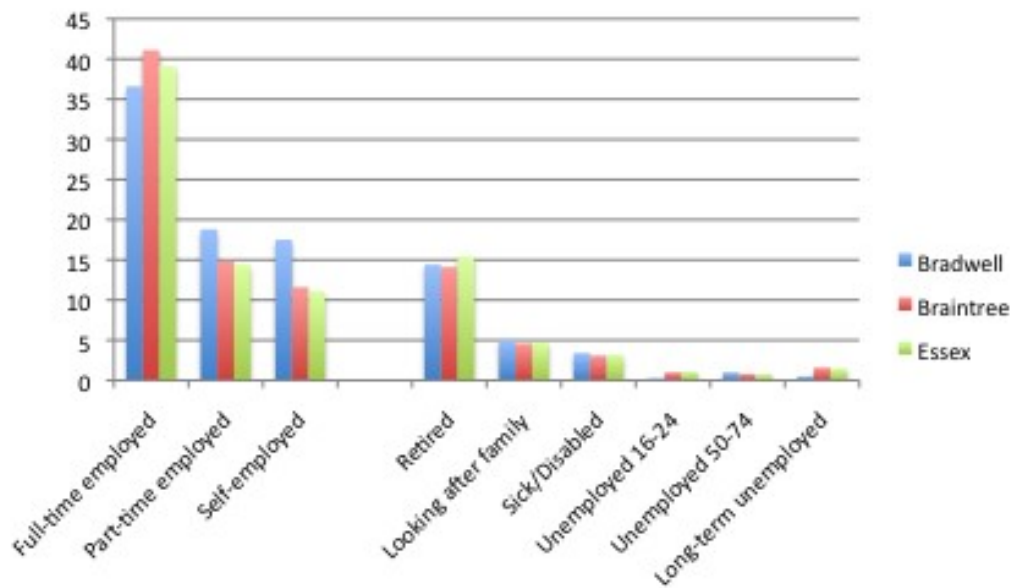


Economic activity

More people are economically active in Bradwell with Pattiswick than in Braintree or Essex. More people are self employed or are in part-time employment, with fewer people working full-time.

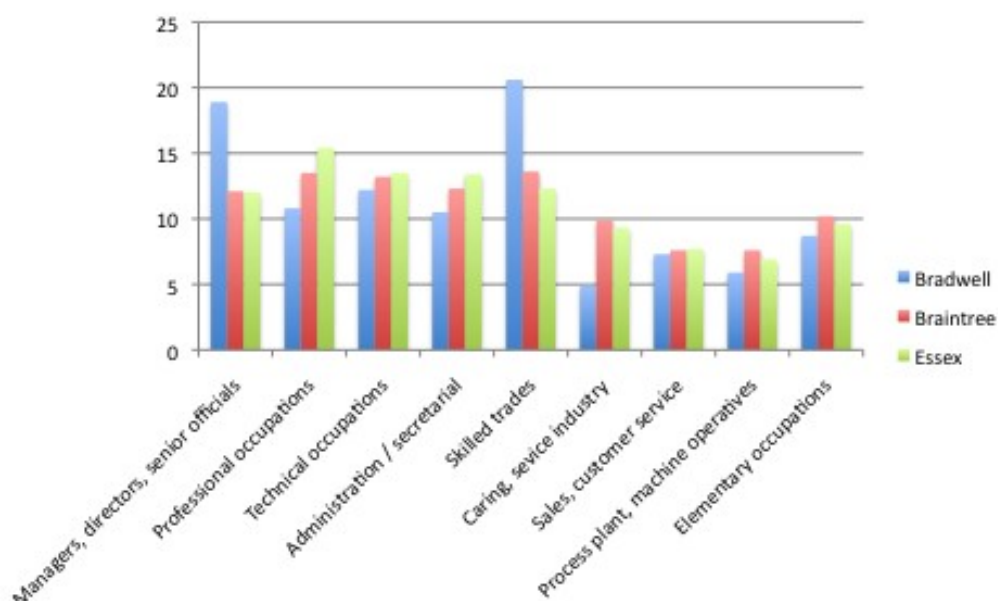
There are fewer long-term unemployed people in Bradwell with Pattiswick than in Braintree or Essex

There are fewer unemployed 16-24 year olds in Bradwell with Pattiswick than in Braintree or Essex



Occupations

Bradwell with Pattiswick has more managers, directors and senior officials and skilled trades, although fewer professionals and people in the service industries.



Annex 2 – Parish Plan and Neighbourhood Plan Topic Groups

The Neighbourhood Plan Steering Group will create and manage the Topic Groups – membership of the Steering Group is yet to be determined, Leaders of Topic Groups are detailed below. Leaders will recruit members of their Topic Groups once their terms of reference are agreed.

The Steering Group will be responsible for ensuring the Plan meets statutory requirements and is developed in co-operation with Braintree District Council.

The Steering Group will also be responsible for the budget and grant applications for the development of the Neighbourhood Plan.

The topics, leadership and initial membership are detailed below. Each Neighbourhood Plan Topic Group will ideally have half a dozen members when operational.

| Topic | Lead | Members |
|---|--|--|
| Neighbourhood Plan – Vision | TBA | TBA |
| Planning Policy | Cllr Tony Dunn | Cllr Glenn Lockey Cllr Craig Evans |
| Community: Village Shop Newsletter | Cllr Marie Webb Parish Clerk – Christine Marshall | Cllr Lesley Kinder |
| Playing Field | Cllr Craig Evans | Cllr Tony Dunn (fund-raising) |
| Community Orchard | Cllr Tony Dunn | |
| Road Safety, to including speeding through villages | Cllr Gareth Pritchard | Cllr John Bedford |
| Young people | Parish Clerk – Christine Marshall | Cllr Lesley Kinder Cllr Craig Evans |
| Education | Parish Council will support establishing a nursery group | |
| Health | Cllr Tony Dunn | TBA |
| Public Transport | Cllr Lesley Kinder | |
| Police and Neighbourhood Watch | Parish Clerk – Christine Marshall | TBA |
| Flooding | Cllr Glenn Lockey | |

Neighbourhood Plan Topic Groups are highlighted in blue