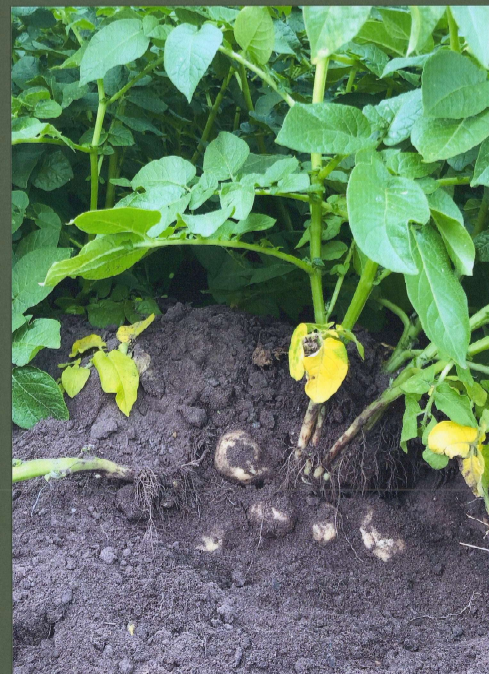
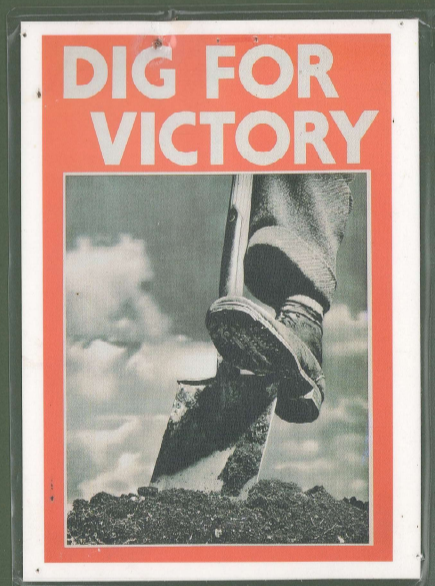


### The Second World War

At the start of the war, the Ministry of Agriculture and Fisheries set up a committee to encourage food production and to give advice and information on growing vegetables.

This became the Dig for Victory Campaign. Smaller allotments now became available. However, many men were fighting abroad and others were engaged in self defence duties, worked long hours, which led to an increasing number of uncultivated plots.



1938 An aerial photograph of Bluebell Allotments. The trading hut is 'ringed'. Photo supplied by Rosemary Ludlow.



**1938** An aerial view of north and south side allotments, showing that Earlham Road and parts of Bluebell Road have had houses built along them. On the north side, there is a faint indication of two paths from Earlham Road boundary, leading directly onto the allotment site.

One path now leads onto the housing from Bluebell Road. The other was closed off and is at the end of the tarmac path near plot 1, it was believed that it was being used as a short cut to the pub on Colman Road.



**1992** An aerial view of the south side and a section of the north side with the Trading Hut clearly visible.

### Rent

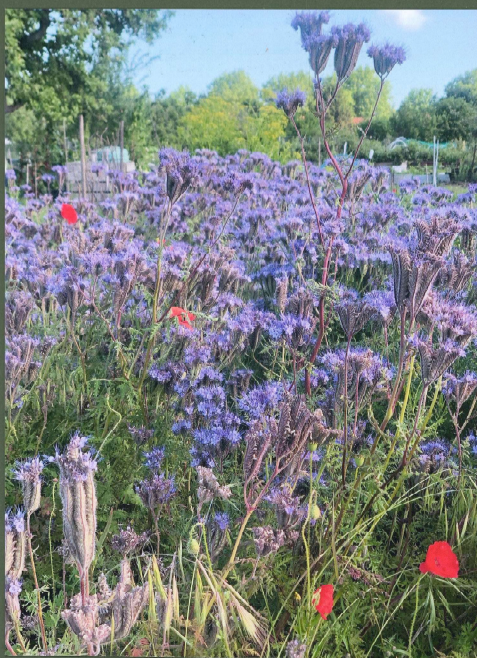
Norwich Corporation Allotment Committee Minutes 13th May 1924  
 "The rent of the Bluebell Allotments be provisionally fixed at 1/- (1 shilling) per rod." ( ten pence in today's money) which for a 20 rod allotment would be £1.  
 Close records were kept by the Allotment Committee of all those who defaulted on the payment of their rent.



## Rules

Norwich Corporation Committee minutes October 1923

*"No pigs shall be kept on the above allotments within 150 yards of a house or a site of a house and then such pigs shall only be kept in a sty, the specifications of which shall be approved by the corporation and no more than two pigs"*





Other apples trees exist on other allotments but these were either inaccessible or their fruit had already fallen or been picked.

## APPLES Bluebell Allotments NORTH

1A	Lady Sudeley / Tydeman's Early Worcester?		
8	Bramley's Seedling		
9	Newton Wonder	172	Miller's Seedling
10	Sir John Thorneycroft	179	Ellison's Orange / Laxton's Epicure?
11	Bramley's Seedling	179A	Lord Derby
14A	Bramley's Seedling	181A	Lord Suffield
15A	Bramley's Seedling	184	Miller's Seedling
17	Warner's King	188	Bramley's Seedling, Emmeth Early,
19A	Emmeth Early	189	Worcester Pearmain, Allington Pippin
57	Warner's King		Ashmead's Kernel, Newton Wonder
58	Bramley's Seedling	189	James Grieve
58B	Dr. Harvey	191A	Miller's Seedling
59B	Newton Wonder, Bramley's Seedling	192A	Herring's Pippin
	(as one tree) also Warner's King	194	Ellison's Orange
70	Worcester Pearmain	198	Bramley's Seedling
72	Bramley's Seedling	199A	Allington Pippin, Cox's Pomona
73	Laxton's Superb	202	Braddick's Nonpareil?
73A	Cox's Orange Pippin	203	Cox's Orange Pippin
75	Tydeman's Early Worcester	247	Ellison's Orange
77	Bramley's Seedling	240A	Bramley's Seedling
80	Reverend Wilkes	250A	Newton Wonder
81	Allington Pippin	254	Warner's King
83A	Worcester Pearmain, Laxton's Superb	254A	Worcester Pearmain
84A	Bramley's Seedling	257	Bramley's Seedling
86	Charles Ross?	259A	Newton Wonder
88	Laxton's Fortune	260A	Newton Wonder
89	Gasgoyne's Scarlet	265A	Charles Ross
90	Newton Wonder	269A	Newton Wonder
91A	Miller's Seedling	269B	Bramley's Seedling
92	St. Cecilia?	273	Miller's Seedling
93A	Tydeman's Early Worcester / Lady Sudeley	274	Bramley's Seedling
95	Lane's Prince Albert	276	Bramley's Seedling
95A	Barnack Beauty	279	Lady Sudeley?
102A	Bramley's Seedling	280	Newton Wonder
103A	Bramley's Seedling	285	Bramley's Seedling
105	Sir John Thorneycroft	288A	Newton Wonder
108	Bramley's Seedling	290	Bramley's Seedling
110	Miller's Seedling		
111	Braddick's Nonpareil		
112	Bramley's Seedling, Warner's King		
157	Bramley's Seedling		
157A	Barnack Beauty		
159	Worcester Pearmain		
159A	Bramley's Seedling		
167	Newton Wonder		
158	Cox's Orange Pippin		

These are the results of a survey by Norfolk Apples & Orchards project volunteers of the apple varieties present on September 7<sup>th</sup> 2001.

Other apples trees exist on other allotments but these were either inaccessible or their fruit had already fallen or been picked.

## APPLES Bluebell Allotments SOUTH

34	Grenadier
35	Herring's Pippin
35A	Norfolk Royal
36	Warner's King
37	Laxton's Superb
38	Newton Wonder
42	Newton Wonder
43	Grenadier
49A	Allington Pippin
50	Red Victoria
54	Bramley's Seedling
55	Grenadier
57	Bramley's Seedling
60	Bramley's
126	Grenadier, Red Victoria
127	Lord Derby, Red Victoria
130A	Bramley's Seedling
131A	Warner's King
135A	Bramley's Seedling
136	Bramley's Seedling
141A	Bramley's Seedling
141	Bramley's Seedling
142	Emmeth Early
143A	Bramley's Seedling
144A	Lord Derby
144B	Worcester Pearmain
147	Grenadier
214A	Bramley's Seedling
214	Warner's King
216A	Bramley's Seedling, Lord Suffield
219	Lord Derby
219A	Lord Derby
220	Bramley's Seedling
222	Emmeth Early
230	Lord Derby
231	Emmeth Early
231A	Gasgoyne's Scarlet
232A	Bramley's Seedling
233	Allington Pippin
234A	Newton Wonder
234	Herring's Pippin
235B	Grenadier
239	Red Victoria

### Trees

The corporation provided fruit trees for the tenants. Some were purchased for £424, in June 1924 from Daniel Brothers who ran the nursery at the junction of Mile End Road and Newmarket Road (now Notcutts).

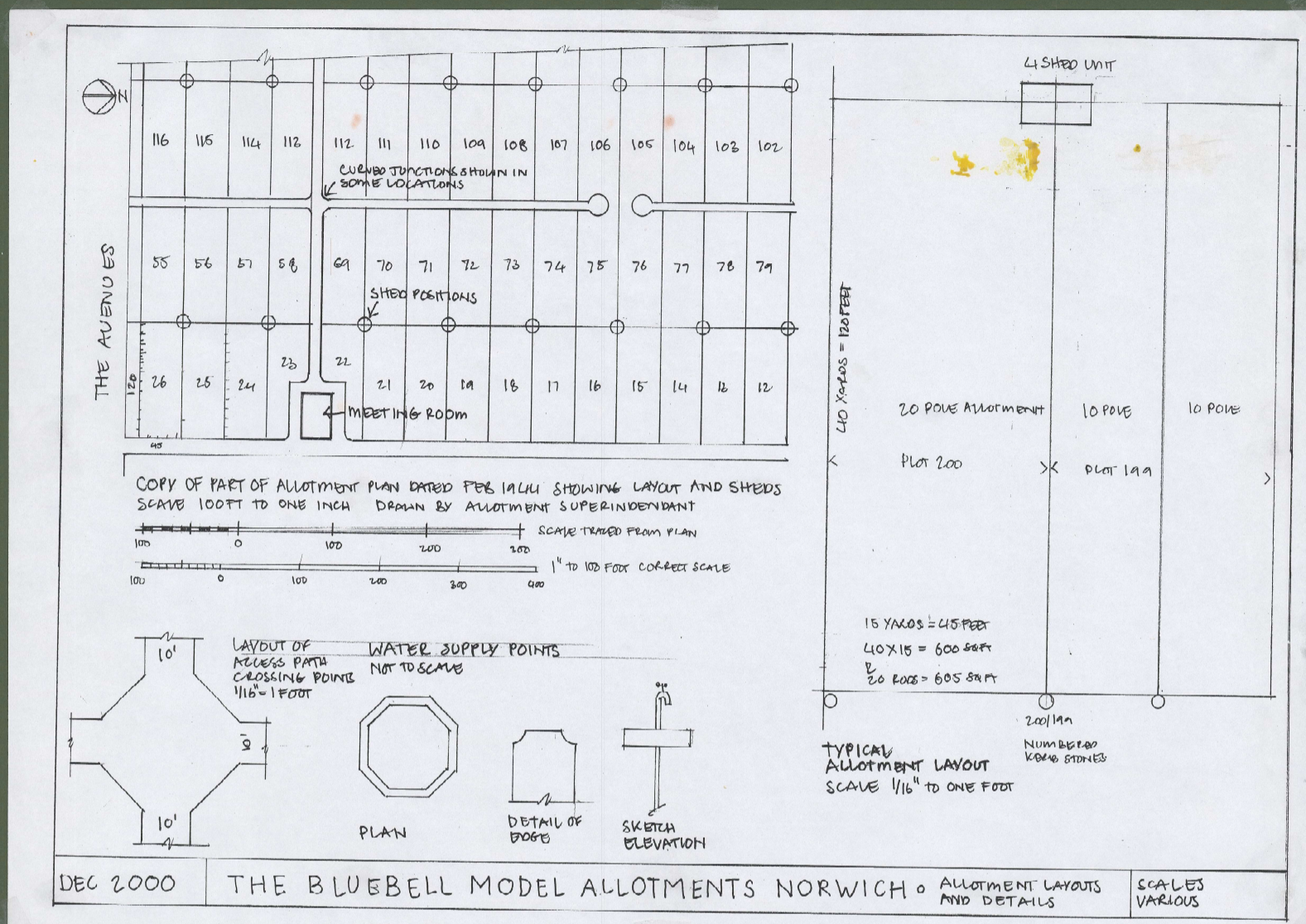
The roads were planted with apple trees, stone fruit were planted within the rows of plots and pear and quinces were grown near the sheds for protection.

In 2014 The East of England Apples and Orchards Project completed a survey of the trees on our site. We hold a copy of the list in the trading hut.

**Have a look for your allotment number on the fruit tree list and see if a tree is recorded on your plot.**

The East of England Project holds annual Apple Days around the region. They are often in the autumn at Gressenhall Rural Life Museum, near Dereham. They display a wonderful array of fruit for identification purposes.

**Look out for Apple Days in our region.**



### Water

Laying on of water was included in the unemployment grant. As described by Bluebell plottolders this was in the form of octagonal water basins surrounding an automatic cistern in each of the fourteen roadway intersections.

Unfortunately, no documentary evidence has been found for laying on of water. Close examination of the road intersections today will show the kerbstones forming a loose octagonal shape, with each plot having a chamfered corner.

In 1956 the water basins were replaced by roadside tanks to allow wider access for manure lorries.